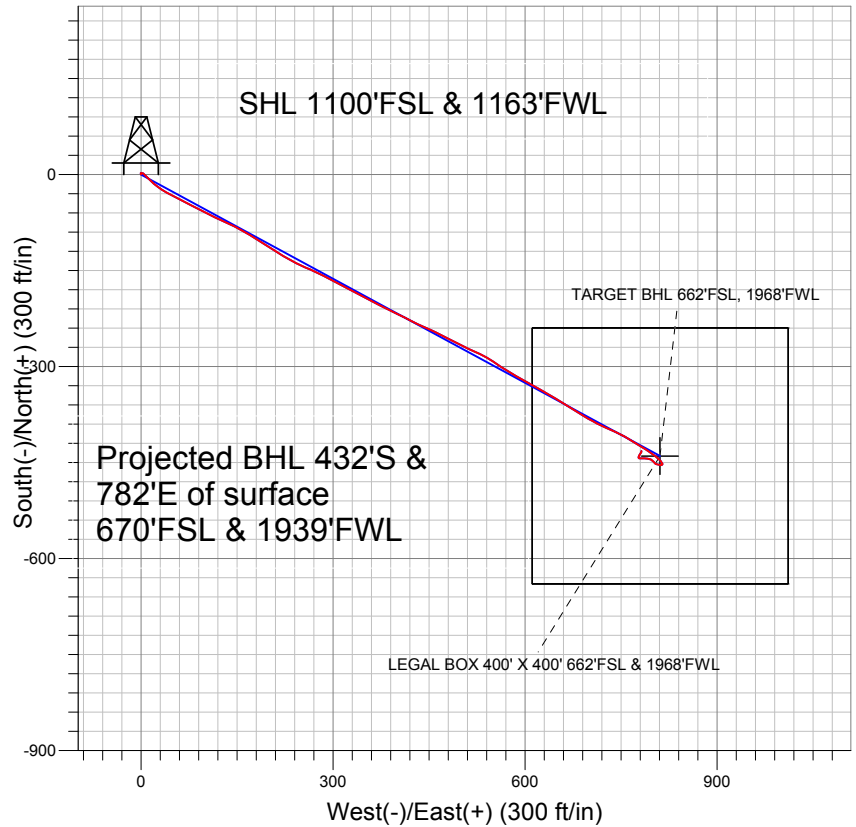


## Synergy Resources



## LEGEND

- △ Pratt 24-29D, Wellbore #1, Plan #4 (3-21-11) V0
- Wellbore #1
- Survey #1

## Final Survey Plot

Projected Final Survey -  
8717'MD & 8609'TVD @ 893'VS  
0.9 deg Inc 358.9 deg AZ

Project: SEC.29-T1N-R68W  
Site: Pratt 24-29D Pad Sec.29-T1N-R68W  
Well: Pratt 24-29D  
Plan: Wellbore #1



## **Directional**

### **Synergy Resources**

**SEC.29-T1N-R68W**

**Pratt 24-29D Pad Sec.29-T1N-R68W**

**Pratt 24-29D**

**Wellbore #1**

**Survey: Survey #1**

### **Standard Survey Report**

**06 April, 2011**

Survey	Survey Data									
	Measured Depth (ft)	Inclination (°)	Azimuth (°)	Vertical Depth (ft)	+N/-S (ft)	+E/-W (ft)	Vertical Section (ft)	Dogleg Rate (°/100ft)	Build Rate (°/100ft)	Turn Rate (°/100ft)
	0.0	0.00	0.00	0.0	0.0	0.0	0.0	0.00	0.00	0.00
	248.0	0.90	354.70	248.0	1.9	-0.2	-1.1	0.36	0.36	0.00
	340.0	2.10	95.70	340.0	2.5	1.4	0.1	2.65	1.30	109.78
	436.0	4.40	134.50	435.8	-0.3	5.8	5.2	3.19	2.40	40.42
	530.0	6.70	135.40	529.4	-6.7	12.2	13.9	2.45	2.45	0.96
	624.0	8.30	131.00	622.6	-15.1	21.2	25.8	1.81	1.70	-4.68
	718.0	9.60	122.40	715.4	-23.7	32.9	40.3	1.98	1.38	-9.15
	812.0	10.30	117.00	808.0	-31.7	47.0	56.5	1.24	0.74	-5.74
	906.0	11.40	117.20	900.3	-39.8	62.8	74.2	1.17	1.17	0.21
	1,024.0	10.90	116.60	1,016.1	-50.1	83.1	97.0	0.43	-0.42	-0.51
	1,117.0	10.80	118.50	1,107.4	-58.2	98.7	114.5	0.40	-0.11	2.04
	1,210.0	12.90	115.50	1,198.5	-66.8	115.7	133.6	2.35	2.26	-3.23
	1,304.0	14.20	114.30	1,289.8	-76.1	135.7	155.5	1.41	1.38	-1.28

<b>Company:</b>	Synergy Resources	<b>Local Co-ordinate Reference:</b>	Well Pratt 24-29D
<b>Project:</b>	SEC.29-T1N-R68W	<b>TVD Reference:</b>	WELL @ 5155.0ft (Original Well Elev)
<b>Site:</b>	Pratt 24-29D Pad Sec.29-T1N-R68W	<b>MD Reference:</b>	WELL @ 5155.0ft (Original Well Elev)
<b>Well:</b>	Pratt 24-29D	<b>North Reference:</b>	True
<b>Wellbore:</b>	Wellbore #1	<b>Survey Calculation Method:</b>	Minimum Curvature
<b>Design:</b>	Wellbore #1	<b>Database:</b>	Landmark

#### Survey

Measured Depth (ft)	Inclination (°)	Azimuth (°)	Vertical Depth (ft)	+N/-S (ft)	+E/-W (ft)	Vertical Section (ft)	Dogleg Rate (°/100ft)	Build Rate (°/100ft)	Turn Rate (°/100ft)
1,397.0	14.90	119.10	1,379.9	-86.6	156.5	178.9	1.50	0.75	5.16
1,491.0	15.00	121.70	1,470.7	-98.9	177.4	203.1	0.72	0.11	2.77
1,585.0	14.20	123.20	1,561.6	-111.6	197.4	226.7	0.94	-0.85	1.60
1,678.0	13.40	121.10	1,652.0	-123.4	216.2	248.9	1.01	-0.86	-2.26
1,772.0	12.90	120.00	1,743.5	-134.3	234.6	270.2	0.59	-0.53	-1.17
1,867.0	13.30	112.70	1,836.0	-143.8	253.9	291.7	1.79	0.42	-7.68
1,961.0	14.50	115.40	1,927.3	-153.0	274.5	314.2	1.45	1.28	2.87
2,054.0	15.30	118.40	2,017.1	-163.8	295.8	338.1	1.19	0.86	3.23
2,148.0	14.70	116.40	2,107.9	-175.0	317.4	362.4	0.84	-0.64	-2.13
2,242.0	15.10	117.90	2,198.8	-186.1	338.9	386.6	0.59	0.43	1.60
2,336.0	13.70	118.60	2,289.8	-197.1	359.5	410.0	1.50	-1.49	0.74
2,429.0	15.30	116.80	2,379.9	-207.9	380.1	433.3	1.79	1.72	-1.94
2,523.0	14.50	114.70	2,470.7	-218.4	401.9	457.4	1.03	-0.85	-2.23
2,616.0	13.90	118.70	2,560.9	-228.7	422.2	480.2	1.24	-0.65	4.30
2,710.0	13.40	112.50	2,652.2	-238.3	442.2	502.3	1.64	-0.53	-6.60
2,804.0	11.80	116.40	2,743.9	-246.7	460.9	522.8	1.93	-1.70	4.15
2,897.0	12.00	116.00	2,834.9	-255.2	478.1	541.9	0.23	0.22	-0.43
2,991.0	14.30	118.10	2,926.5	-264.9	497.1	563.3	2.50	2.45	2.23
3,085.0	15.10	113.40	3,017.4	-275.3	518.6	587.1	1.53	0.85	-5.00
3,179.0	14.50	119.60	3,108.3	-285.9	540.1	611.1	1.80	-0.64	6.60
3,272.0	14.40	124.40	3,198.3	-298.2	559.7	634.2	1.29	-0.11	5.16
3,366.0	15.40	120.40	3,289.2	-311.1	580.1	658.3	1.53	1.06	-4.26
3,460.0	16.80	120.00	3,379.5	-324.2	602.7	684.4	1.49	1.49	-0.43
3,554.0	16.30	118.30	3,469.6	-337.3	626.1	711.1	0.74	-0.53	-1.81
3,647.0	15.50	121.30	3,559.0	-349.9	648.2	736.6	1.23	-0.86	3.23
3,741.0	16.20	122.40	3,649.5	-363.5	670.0	762.2	0.81	0.74	1.17
3,835.0	15.40	121.20	3,739.9	-377.0	691.7	787.8	0.92	-0.85	-1.28
3,929.0	13.60	117.60	3,830.9	-388.6	712.2	811.3	2.14	-1.91	-3.83
4,022.0	11.40	112.20	3,921.7	-397.1	730.4	831.4	2.68	-2.37	-5.81
4,116.0	11.00	117.80	4,013.9	-404.8	746.9	849.6	1.23	-0.43	5.96
4,210.0	10.70	120.60	4,106.2	-413.4	762.4	867.3	0.65	-0.32	2.98
4,303.0	10.00	121.20	4,197.7	-422.0	776.7	883.9	0.76	-0.75	0.65
4,397.0	7.30	121.80	4,290.7	-429.4	788.8	898.1	2.87	-2.87	0.64
4,490.0	5.80	126.90	4,383.0	-435.3	797.6	908.6	1.73	-1.61	5.48
4,585.0	4.60	129.50	4,477.7	-440.6	804.3	917.1	1.29	-1.26	2.74
4,679.0	1.90	131.80	4,571.5	-444.1	808.4	922.3	2.88	-2.87	2.45
4,867.0	1.00	136.90	4,759.4	-447.3	811.8	926.9	0.48	-0.48	2.71
5,054.0	0.60	167.90	4,946.4	-449.5	813.2	929.1	0.31	-0.21	16.58
5,107.5	0.52	158.87	4,999.9	-450.0	813.3	929.5	0.23	-0.16	-16.88
<b>TARGET BHL 662'FSL, 1968'FWL</b>									
5,241.0	0.40	122.90	5,133.4	-450.8	813.9	930.4	0.23	-0.09	-26.95
5,429.0	0.40	150.30	5,321.4	-451.7	814.8	931.6	0.10	0.00	14.57
5,617.0	0.50	217.00	5,509.4	-452.9	814.6	932.0	0.27	0.05	35.48
5,805.0	0.40	248.70	5,697.4	-453.8	813.5	931.5	0.14	-0.05	16.86
5,992.0	0.60	280.70	5,884.4	-453.9	811.9	930.1	0.18	0.11	17.11
6,180.0	0.90	281.90	6,072.4	-453.4	809.5	927.8	0.16	0.16	0.64
6,307.6	1.04	280.74	6,200.0	-453.0	807.4	925.7	0.11	0.11	-0.91
<b>LEGAL BOX 400' X 400' 662'FSL &amp; 1968'FWL</b>									
6,367.0	1.10	280.30	6,259.3	-452.8	806.3	924.7	0.11	0.11	-0.74
6,554.0	0.40	314.90	6,446.3	-452.0	804.1	922.3	0.43	-0.37	18.50
6,742.0	0.70	314.80	6,634.3	-450.7	802.8	920.6	0.16	0.16	-0.05
6,930.0	1.50	319.40	6,822.3	-448.0	800.4	917.2	0.43	0.43	2.45
7,117.0	1.50	291.70	7,009.2	-445.3	796.5	912.5	0.38	0.00	-14.81
7,305.0	1.50	278.60	7,197.2	-444.0	791.8	907.7	0.18	0.00	-6.97

<b>Company:</b>	Synergy Resources	<b>Local Co-ordinate Reference:</b>	Well Pratt 24-29D
<b>Project:</b>	SEC.29-T1N-R68W	<b>TVD Reference:</b>	WELL @ 5155.0ft (Original Well Elev)
<b>Site:</b>	Pratt 24-29D Pad Sec.29-T1N-R68W	<b>MD Reference:</b>	WELL @ 5155.0ft (Original Well Elev)
<b>Well:</b>	Pratt 24-29D	<b>North Reference:</b>	True
<b>Wellbore:</b>	Wellbore #1	<b>Survey Calculation Method:</b>	Minimum Curvature
<b>Design:</b>	Wellbore #1	<b>Database:</b>	Landmark

Survey										
Measured Depth (ft)	Inclination (°)	Azimuth (°)	Vertical Depth (ft)	+N/-S (ft)	+E/-W (ft)	Vertical Section (ft)	Dogleg Rate (°/100ft)	Build Rate (°/100ft)	Turn Rate (°/100ft)	
7,491.0	1.60	276.60	7,383.1	-443.3	786.8	903.0	0.06	0.05	-1.08	
7,678.0	1.70	266.10	7,570.0	-443.2	781.5	898.3	0.17	0.05	-5.61	
7,866.0	0.50	298.00	7,758.0	-443.0	778.0	895.1	0.69	-0.64	16.97	
8,053.0	0.50	8.90	7,945.0	-441.8	777.4	894.0	0.31	0.00	37.91	
8,240.0	1.00	25.30	8,132.0	-439.6	778.2	893.6	0.29	0.27	8.77	
8,428.0	1.00	36.10	8,319.9	-436.8	779.9	893.8	0.10	0.00	5.74	
8,616.0	1.20	26.70	8,507.9	-433.7	781.7	893.9	0.14	0.11	-5.00	
8,673.0	0.90	358.90	8,564.9	-432.7	782.0	893.7	1.02	-0.53	-48.77	
8,717.0	0.90	358.90	8,608.9	-432.0	782.0	893.3	0.00	0.00	0.00	

Checked By: _____	Approved By: _____	Date: _____
-------------------	--------------------	-------------