

Stell Surveying Services, LLC

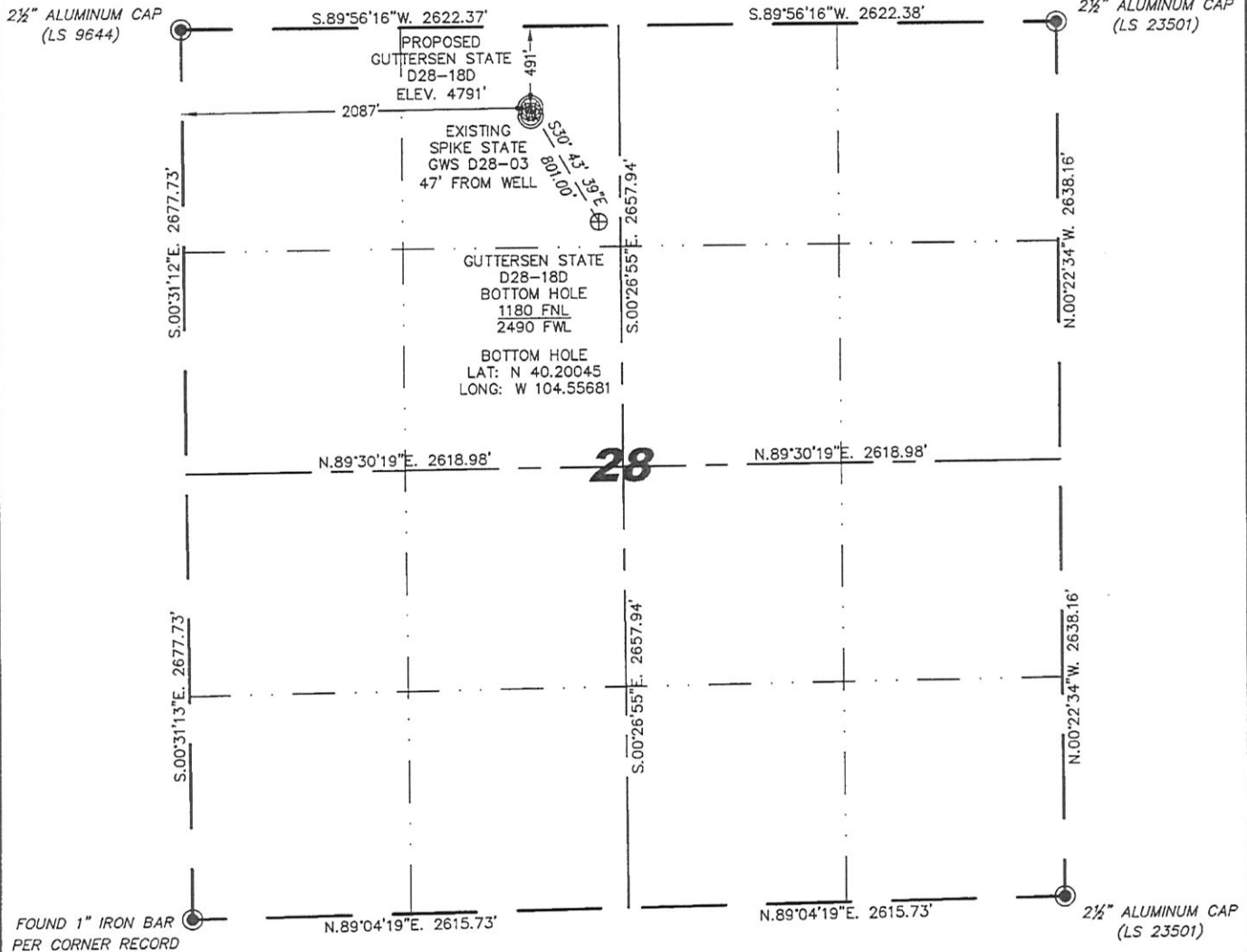
1102 West 19th Street P.O. BOX 2073

Cheyenne, Wyoming 82001

# WELL LOCATION CERTIFICATE

THIS MAP DOES NOT REPRESENT A BOUNDARY SURVEY

SECTION 28  
TOWNSHIP 3 NORTH  
RANGE 64 WEST



0 1000

Scale: 1" = 1000'

IN ACCORDANCE WITH A REQUEST FROM BRIAN DEROSE - NOBLE ENERGY INC, STELL SURVEYING SERVICES, LLC HAS DETERMINED THE LOCATION OF THE GUTTERSEN STATE D28-18D WELL TO BE 491' FNL, 2087' FWL, AS MEASURED AT NINETY (90) DEGREES FROM THE SECTION LINES, SECTION 28, TOWNSHIP 3 NORTH, RANGE 64 WEST, 6TH PRINCIPLE MERIDIAN, WELD COUNTY, COLORADO.

I HEREBY CERTIFY THAT THIS WELL LOCATION CERTIFICATE WAS PREPARED BY ME, OR UNDER MY DIRECT SUPERVISION, THAT THE FIELD WORK WAS COMPLETED ON 08/23/2011, FOR AND ON BEHALF OF NOBLE ENERGY INC, THAT IT IS NOT A LAND SURVEY PLAT OR AN IMPROVEMENT SURVEY PLAT, AND THAT IT IS NOT TO BE RELIED UPON FOR ESTABLISHMENT OF FENCE, BUILDING, OR OTHER FUTURE IMPROVEMENT LINES.

## NOTES:

- 1) BASIS OF BEARINGS FOR THIS MAP ARE BASED UPON GPS OBSERVATIONS MADE ON 04/15/2011 BETWEEN MONUMENTS LOCATED AT THE SOUTHEAST SECTION CORNER AND THE NORTHEAST SECTION CORNER OF SAID SECTION AND WITH ALL BEARINGS SHOWN HEREON RELATIVE THERETO.
- 2) COORDINATES SHOWN ARE COLORADO STATE PLANE (NORTH ZONE) NAD 83.
- 3) ELEVATIONS ARE BASED UPON NGS OPUS SOLUTION NAVD 88 DATUM.
- 4) THE NEAREST EXISTING WELL IS: SPIKE STATE GWS D28-03, 47' SOUTH.
- 5) SEE LOCATION DRAWING FOR ALL IMPROVEMENTS WITHIN VISIBLE IMPROVEMENT LIMIT.
- 6) THE LOCATION FALLS IN PASTURE LAND.

LATITUDE & LONGITUDE (NAD 83 SURFACE HOLE):

LATITUDE: N 40.20235°  
LONGITUDE: W 104.55825°  
PDOP: 1.9  
QUARTER-QUARTER: NE/4NW/4  
NEAREST PROPERTY LINE: 491' NORTH

## LEGEND

- FOUND SURVEY MONUMENT PER MONUMENT RECORD - EXCEPTIONS NOTED.
- (C) CALCULATED DIMENSION



Completed 08/30/2011

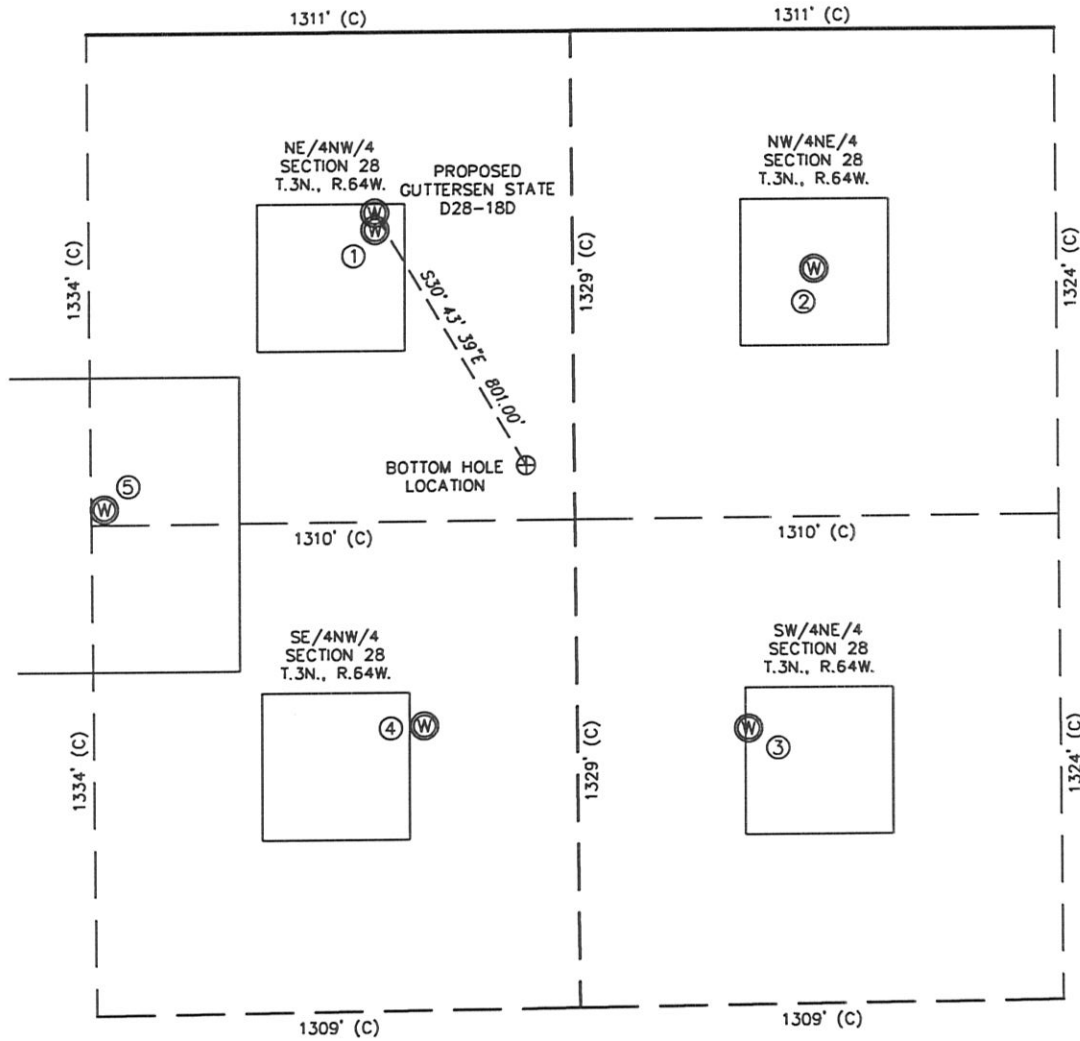
David C. Holmes  
Professional Land Surveyor Registration No. 32828  
State of Colorado

JOB #: 11086

NOTICE: According to Colorado law you MUST commence any legal action based upon any defect in this W.L.C. within three years after you first discover such defect. In no event may any action based upon any defect in this W.L.C. be commenced more than ten years from this said date of the certification shown hereon.

# SKETCH - GUTTERSEN STATE D28-18D

SECTION 28  
TOWNSHIP 3 NORTH  
RANGE 64 WEST



①	②	③	④	⑤
SPIKE STATE GWS D28-03 NE/NW SEC. 28 537' FNL 2087' FWL EL 4791' N 40.20222 W 104.55825 PDOP 3.3	O'SH D28-2 NW/NE SEC. 28 652' FNL 1967' FEL EL 4814' N 40.20188 W 104.55400 PDOP 1.9	HSR-GUTTERSEN STATE 7-28 SW/NE SEC. 28 1902' FNL 2155' FEL EL 4806' N 40.19845 W 104.55469 PDOP 2.0	SPIKE STATE GWS D28-6 SE/NW SEC. 28 1887' FNL 2206' FWL EL 4796' N 40.19852 W 104.55784 PDOP 2.2	SPIKE STATE D28-19 NE/NW SEC. 28 1291' FNL 1346' FWL EL 4795' N 40.20017 W 104.56091 PDOP 1.9

## NOTES:

- THIS SKETCH DOES NOT REPRESENT A BOUNDARY SURVEY.
- THE DATUM FOR THE LATITUDES AND LONGITUDES ON THIS SKETCH IS NAD83.

