

T6S, R95W, 6th P.M.

WILLIAMS PRODUCTION RMT COMPANY

1921 Brass Cap
1.4' High, Steel Post
Lat: 39.517661°
Long: 108.031766°

S89°57'16"W -
5278.27' (Meas.)

WC
1921 Brass Cap
1.0' High, Pile
of Stones
Lat: 39.517658°
Long: 108.013317°

Well location, EXXONMOBIL AP 334-17-695
(SURFACE LOCATION), located as shown in 19837
LA PAZ No.10 Placer of Section 20, T6S, R95W,
6th P.M., Garfield County, Colorado.

BASIS OF ELEVATION

SPOT ELEVATION AT THE NORTHWEST CORNER OF SECTION
30, T5S, R95W, 6th P.M. TAKEN FROM THE FORKED GULCH
QUADRANGLE, COLORADO, GARFIELD COUNTY, 7.5 MINUTE
SERIES (TOPOGRAPHICAL MAP) PUBLISHED BY THE UNITED
STATES DEPARTMENT OF THE INTERIOR, GEOLOGICAL SURVEY.
SAID ELEVATION IS MARKED AS BEING 5966 FEET.

BASIS OF BEARINGS

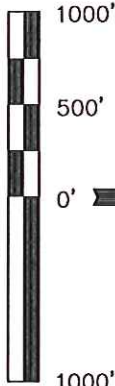
BASIS OF BEARINGS IS A G.P.S. OBSERVATION.

NOTE:
SEE CURRENT FOOTAGE PLAT #6 FOR
EXISTING IMPROVEMENT WITHIN 400' OF
THE PROPOSED WELL DISTURBANCE.

PLAT #1

NOTE:
THE PROPOSED BOTTOM HOLE FOR THIS WELL
IS LOCATED IN 19837 LA PAZ No. 10 PLACER
OF SECTION 17, T6S, R95W, 6th P.M. AT A
DISTANCE OF 477' FSL 2290' FEL. IT BEARS
N41°33'38"E 726.75' FROM THE PROPOSED
WELL HEAD.

WC 1921 Brass
Cap 2.0' High
Lat: 39.510536°
Long: 108.013108°



CERTIFICATE

THIS IS TO CERTIFY THAT THE ABOVE PLAT WAS PREPARED AND
LOCATION AS SHOWN WAS STAKED ON THE 2806th FROM FIELD
NOTES OF ACTUAL SURVEYS MADE BY ME OR UNDER MY
SUPERVISION AND THAT THE SAME ARE TRUE AND CORRECT TO
THE BEST OF MY KNOWLEDGE AND BELIEF.

Revised: 09-26-11 D.R.B.

WC 1921 Brass
Cap 1.2' High
Lat: 39.502167°
Long: 108.013114°

REGISTERED LAND SURVEYOR
REGISTRATION NO. 17492
STATE OF COLORADO
10-02-2011

UTAH ENGINEERING & LAND SURVEYING
85 SOUTH 200 EAST - VERNAL, UTAH 84078
(435) 789-1017

SCALE 1" = 1000'
DATE SURVEYED: 04-28-10
DATE DRAWN: 03-17-11

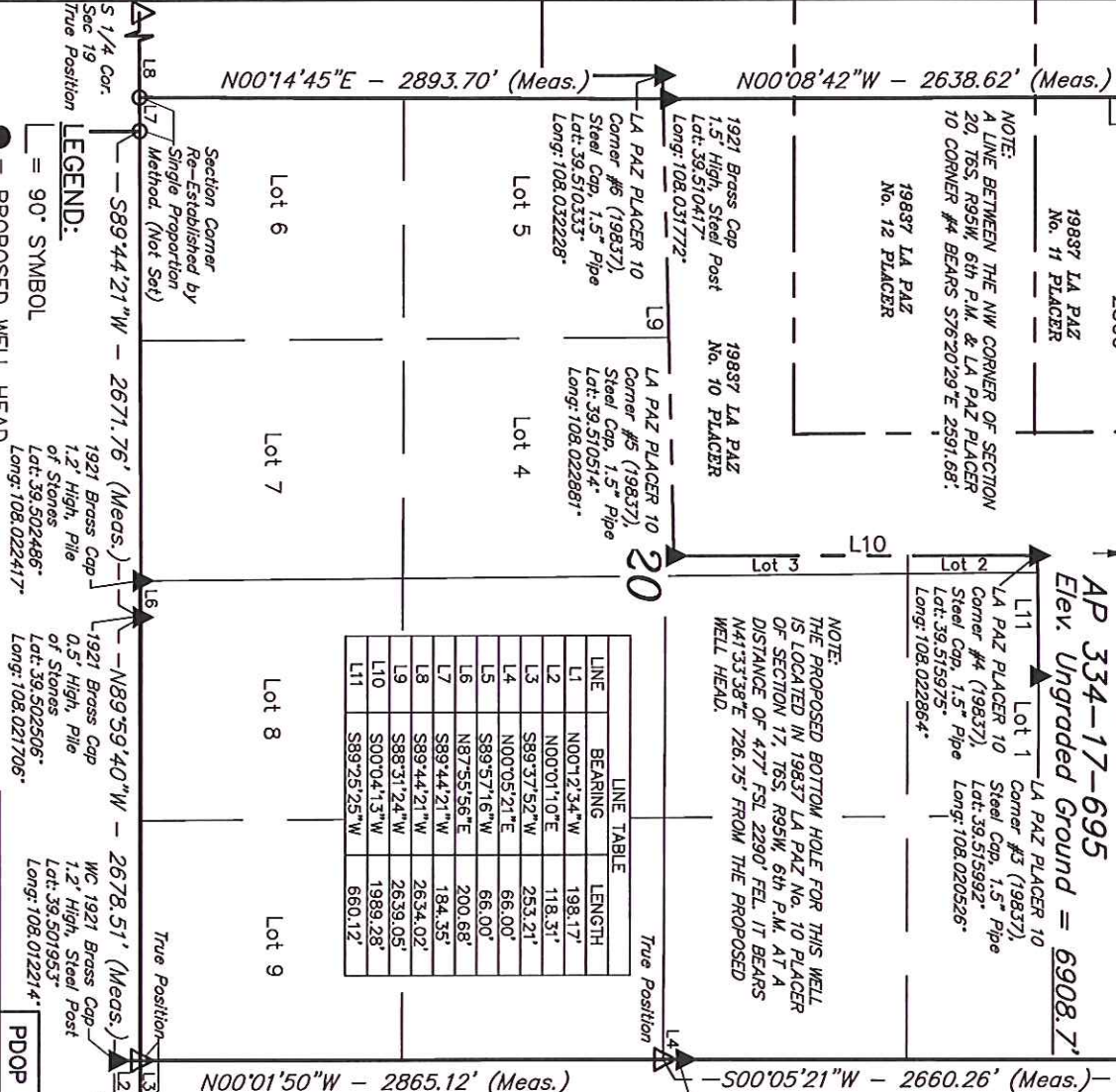
PARTY B.B. B.J. D.R.B. REFERENCES G.L.O. PLAT

WEATHER COOL FILE WILLIAMS PRODUCTION RMT COMPANY

LEGEND:

- = 90° SYMBOL
- ▲ = PROPOSED WELL HEAD.
- ▲ = SECTION CORNERS LOCATED.
- △ = SECTION CORNERS RE-ESTAB.
(Not Set on Ground)

LINE	BEARING	LENGTH
L1	N00°12'34"W	198.17'
L2	N00°01'10"E	118.31'
L3	S89°37'52"W	253.21'
L4	N00°05'21"E	66.00'
L5	S89°57'16"W	66.00'
L6	N87°55'56"E	200.68'
L7	S89°44'21"W	184.35'
L8	S89°44'21"W	2634.02'
L9	S88°31'24"W	2639.05'
L10	S00°04'13"W	1989.28'
L11	S89°25'25"W	660.12'



Section Corner
Re-Established by
Single Proportion
Method. (Not Set)

S 1/4 Cor.
Sec 19
True Position

S89°44'21"W - 2671.76' (Meas.)

1921 Brass Cap
1.2' High, Pile
of Stones
Lat: 39.502486°
Long: 108.022417°

N89°59'40"W - 2678.51' (Meas.)

WC 1921 Brass Cap
1.2' High, Steel Post
Lat: 39.501955°
Long: 108.012214°

PDOP = 2.5

NAD 83 (SURFACE LOCATION)
LATITUDE = 39°31'02.97" (39.517475)
LONGITUDE = 108°01'22.46" (108.022906)

STATE PLANE-(COLO. CENTRAL-NAD 83)
N = 1623251.640
E = 2288343.403

T6S, R95W, 6th P.M.

WILLIAMS PRODUCTION RMT COMPANY

Well location, EXXONMOBIL AP 334-17-695 (TARGET BOTTOM HOLE), located as shown in 19837 LA PAZ No.10 Placer of Section 17, T6S, R95W, 6th P.M., Garfield County, Colorado.

BASIS OF ELEVATION

SPOT ELEVATION AT THE NORTHWEST CORNER OF SECTION 30, T5S, R95W, 6th P.M. TAKEN FROM THE FORKED GULCH QUADRANGLE, COLORADO, GARFIELD COUNTY, 7.5 MINUTE SERIES (TOPOGRAPHICAL MAP) PUBLISHED BY THE UNITED STATES DEPARTMENT OF THE INTERIOR, GEOLOGICAL SURVEY. SAID ELEVATION IS MARKED AS BEING 5966 FEET.

BASIS OF BEARINGS

BASIS OF BEARINGS IS A G.P.S. OBSERVATION.

19837 LA PAZ
No. 8 PLACER

PLAT #1



CERTIFICATE

THIS IS TO CERTIFY THAT THE ABOVE PLAT WAS PREPARED AND LOCATION AS SHOWN WAS STAKED ON THE GROUND FROM FIELD NOTES OF ACTUAL SURVEYS MADE BY ME OR UNDER MY SUPERVISION AND THAT THE SAME ARE TRUE AND CORRECT TO THE BEST OF MY KNOWLEDGE AND BELIEF.

REGISTERED LAND SURVEYOR
STATE OF COLORADO
10-00-2011

Revised: 09-26-11 D.R.B.

UNTAH ENGINEERING & LAND SURVEYING
85 SOUTH 200 EAST - VERNAL, UTAH 84078
(435) 789-1017

SCALE 1" = 1000'	DATE SURVEYED: 04-28-10	DATE DRAWN: 03-17-11
PARTY B.B. B.J. D.R.B.	REFERENCES G.L.O. PLAT	
WEATHER COOL	FILE	WILLIAMS PRODUCTION RMT COMPANY

19942 SHERIDAN
PLACER No. 8

19942 SHERIDAN
PLACER No. 7

19942 SHERIDAN
PLACER No. 5

19942 SHERIDAN
PLACER No. 4

N89°53'W - 5286.60' (G.L.O.)

1921 Brass Cap
1.2' High
Lat: 39.532097°
Long: 108.013072°

LINE	BEARING	LENGTH
L5	S89°57'16"W	66.00'
L11	S89°25'25"W	660.12'

NOTE:
THE PROPOSED BOTTOM HOLE FOR THIS WELL
BEARS N41°33'38"E 726.75' FROM THE
PROPOSED WELL HEAD WHICH IS LOCATED IN
19837 LA PAZ No. 10 PLACER OF SECTION
20, T6S, R95W, 6th P.M. AT A DISTANCE OF
67' FNL 2506' FWL.

19837 LA PAZ
No. 1 PLACER

1921 Brass Cap
1.2' High
Lat: 39.524914°
Long: 108.031792°

19837 LA PAZ
No. 9 PLACER

17

NOTE:
A LINE BETWEEN THE NW CORNER OF SECTION
20, T6S, R95W, 6th P.M. & LA PAZ PLACER
10 CORNER #4 BEARS S76°20'29"E 2591.68'.

19837 LA PAZ
No. 11 PLACER

19837 LA PAZ
No. 10 PLACER

EXXONMOBIL
AP 334-17-695
TARGET BOTTOM HOLE

EXXONMOBIL
AP 334-17-695
SURFACE LOCATION

WC 1921 Brass
Cap 1.0' High,
Pile of Stones
Lat: 39.517658°
Long: 108.013317°

S89°57'16"W - 5278.27' (Meas.)

LA PAZ PLACER 10
Corner #3 (19837),
Steel Cap, 1.5" Pipe
Lat: 39.515992°
Long: 108.020526°

L11

LA PAZ PLACER 10
Corner #4 (19837),
Steel Cap, 1.5" Pipe
Lat: 39.515975°
Long: 108.022864°

NAD 83 (TARGET BOTTOM HOLE)
LATITUDE = 39°31'08.28" (39.518967)
LONGITUDE = 108°01'16.31" (108.021197)
STATE PLANE-COLO. CENTRAL-NAD 83
N = 1623781.200
E = 2288840.800

LEGEND:

- 90° SYMBOL
- PROPOSED WELL HEAD.
- SECTION CORNERS LOCATED.
- SECTION CORNERS RE-ESTAB.
(Not Set on Ground)