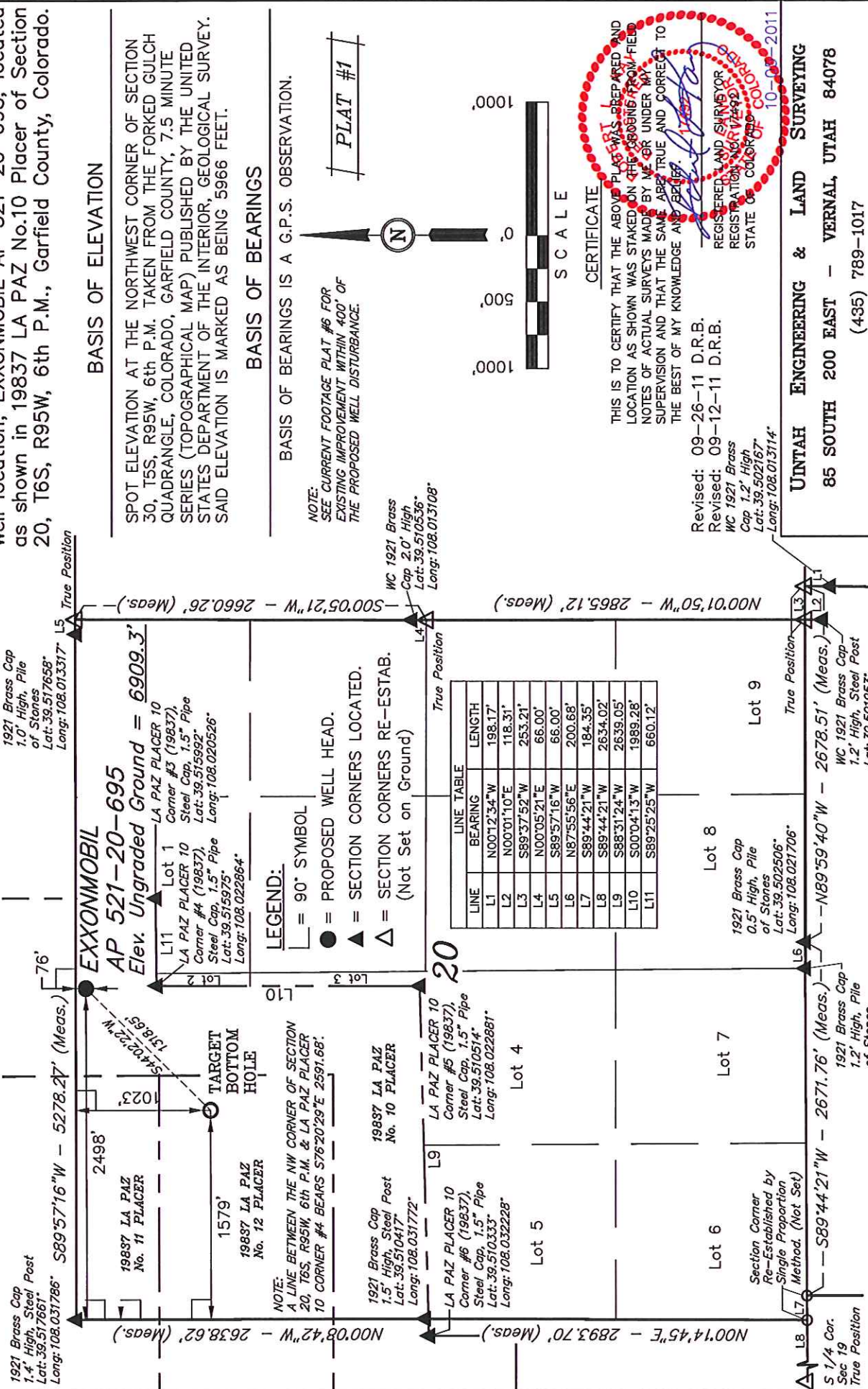


T6S, R95W, 6th P.M.

WILLIAMS PRODUCTION RMT COMPANY

Well location, EXXONMOBIL AP 521-20-695, located as shown in 19837 LA PAZ No.10 Placer of Section 20, T6S, R95W, 6th P.M., Garfield County, Colorado.

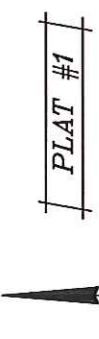


BASIS OF ELEVATION

SPOT ELEVATION AT THE NORTHWEST CORNER OF SECTION 30, T5S, R95W, 6th P.M. TAKEN FROM THE FORKED GULCH QUADRANGLE, COLORADO, GARFIELD COUNTY, 7.5 MINUTE SERIES (TOPOGRAPHICAL MAP) PUBLISHED BY THE UNITED STATES DEPARTMENT OF THE INTERIOR, GEOLOGICAL SURVEY. SAID ELEVATION IS MARKED AS BEING 5966 FEET.

BASIS OF BEARINGS

BASIS OF BEARINGS IS A G.P.S. OBSERVATION.



NOTE: SEE CURRENT FOOTAGE PLAT #6 FOR EXISTING IMPROVEMENT WITHIN 400' OF THE PROPOSED WELL DISTURBANCE.

WC 1921 Brass Cap 2.0' High Lat: 39.510536° Long: 108.013108°

CERTIFICATE

THIS IS TO CERTIFY THAT THE ABOVE PLAT WAS PREPARED AND LOCATION AS SHOWN WAS STAKED ON THE GROUND FROM FIELD NOTES OF ACTUAL SURVEYS MADE BY ME OR UNDER MY SUPERVISION AND THAT THE SAME ARE TRUE AND CORRECT TO THE BEST OF MY KNOWLEDGE AND BELIEF.

Revised: 09-26-11 D.R.B.  
Revised: 09-12-11 D.R.B.  
WC 1921 Brass Cap 1.2' High Lat: 39.502167° Long: 108.013114°

UTAH ENGINEERING & LAND SURVEYING

85 SOUTH 200 EAST - VERNAL, UTAH 84078

(435) 789-1017

SCALE 1" = 1000'	DATE SURVEYED: 04-28-10	DATE DRAWN: 03-17-11
PARTY B.B. B.J. D.R.B.	REFERENCES G.L.O. PLAT	
WEATHER COOL	FILE	
WILLIAMS PRODUCTION RMT COMPANY		

PDOP = 2.6	NAD 83 (SURFACE LOCATION)
	LATITUDE = 39°31'02.82" (39.517450)
	LONGITUDE = 108°01'22.57" (108.022936)
	STATE PLANE-(COLO. CENTRAL-NAD 83)
	N = 1623242.422
	E = 2288335.016

	NAD 83 (TARGET BOTTOM HOLE)
	LATITUDE = 39°30'53.46" (39.514850)
	LONGITUDE = 108°01'34.27" (108.026186)
	STATE PLANE-(COLO. CENTRAL-NAD 83)
	N = 1622321.500
	E = 2287391.800