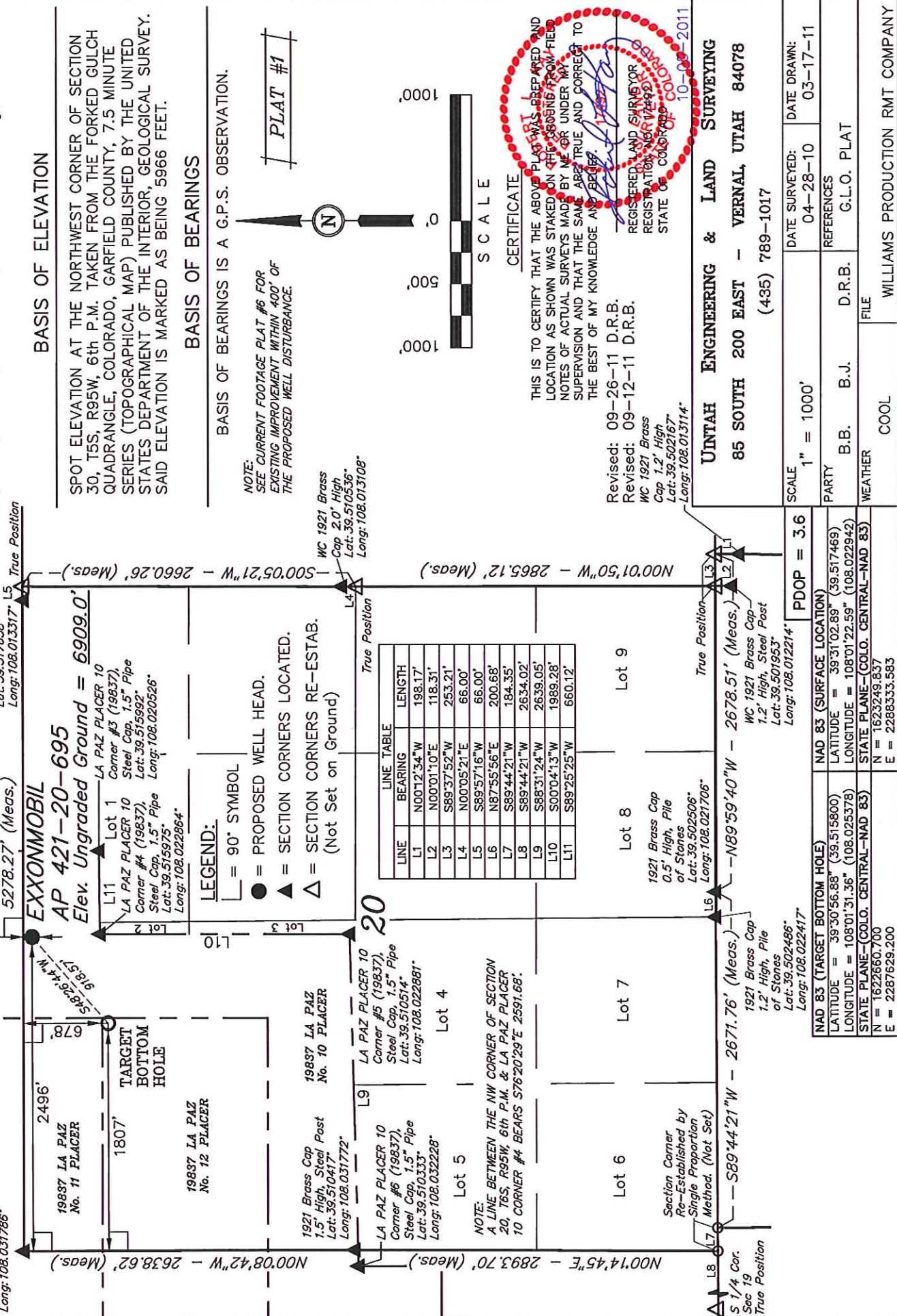


WILLIAMS PRODUCTION RMT COMPANY

1921 Brass Cap
1.4" High, Steel Post
Lat: 39.517661°
Long: 108.031786°



CERTIFICATE

THIS IS TO CERTIFY THAT THE ABOVE PLAT WAS PREPARED AND
LOCATION AS SHOWN WAS STAKED ON THE GROUND FROM FIELD
NOTES OF ACTUAL SURVEYS MADE BY ME OR UNDER MY
SUPERVISION AND THAT THE SAME ARE TRUE AND CORRECT TO
THE BEST OF MY KNOWLEDGE AND BELIEF.

Revised: 09-26-11 D.R.B.
Revised: 09-12-11 D.R.B.
WC 1921 Brass
Cap 1.2" High
Lot: 39.502167
Loc: 108 01 1114

UTAH ENGINEERING & LAND SURVEYING
85 SOUTH 200 EAST - VERNAL, UTAH 84078
(435) 789-1017

SCALE	1" = 1000'	DATE SURVEYED:	DATE DRAWN:
PARTY	B.B. B.J.	REFERENCES	
WEATHER	COOL	D.R.B.	G.L.O. PLAT
		FILE	WILLIAMS PRODUCTION RMT COMPANY

NAD 83 (TARGET BOTTOM HOLE)		NAD 83 (SURFACE LOCATION)		PDOP = 3.6
LATITUDE = 39°30'56.88" (39.515800)	LATITUDE = 39°31'02.89" (39.517469)			
LONGITUDE = 108°01'31.36" (108.025378)	LONGITUDE = 108°01'22.59" (108.022942)			
STATE PLANE = COLO. CENTRAL-NAD 83	STATE PLANE = COLO. CENTRAL-NAD 83			
N = 1622860.700	N = 1623249.837			
E = 2287629.200	E = 2288333.583			