

T6S, R95W, 6th P.M.

WILLIAMS PRODUCTION RMT COMPANY

Well location, EXXONMOBIL AP 423-17-695 (SURFACE LOCATION), located as shown in 19837 LA PAZ No.10 Placer of Section 20, T6S, R95W, 6th P.M., Garfield County, Colorado.

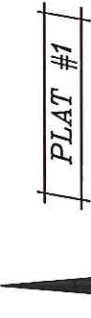
BASIS OF ELEVATION

SPOT ELEVATION AT THE NORTHWEST CORNER OF SECTION 30, T5S, R95W, 6th P.M. TAKEN FROM THE FORKED GULCH QUADRANGLE, COLORADO, GARFIELD COUNTY, 7.5 MINUTE SERIES (TOPOGRAPHICAL MAP) PUBLISHED BY THE UNITED STATES DEPARTMENT OF THE INTERIOR, GEOLOGICAL SURVEY. SAID ELEVATION IS MARKED AS BEING 5966 FEET.

BASIS OF BEARINGS

BASIS OF BEARINGS IS A G.P.S. OBSERVATION.

NOTE:
SEE CURRENT FOOTAGE PLAT #6 FOR EXISTING IMPROVEMENT WITHIN 400' OF THE PROPOSED WELL DISTURBANCE.



WC 1921 Brass Cap 2.0' High
Lat: 39.510536°
Long: 108.013108°

LINE	BEARING	LENGTH
L1	N00°12'34"W	198.17'
L2	N00°01'10"E	118.31'
L3	S89°37'52"W	253.21'
L4	N00°05'21"E	66.00'
L5	S89°57'16"W	66.00'
L6	N87°55'56"E	200.68'
L7	S89°44'21"W	184.35'
L8	S89°44'21"W	2634.02'
L9	S88°31'24"W	2639.05'
L10	S00°04'13"W	1989.28'
L11	S89°25'25"W	660.12'

NOTE:
THE PROPOSED BOTTOM HOLE FOR THIS WELL IS LOCATED IN 19837 LA PAZ No. 1 PLACER OF SECTION 17, T6S, R95W, 6th P.M. AT A DISTANCE OF 1975' FSL 1519' F.W.L. IT BEARS N25°54'15"W 2222.59' FROM THE PROPOSED WELL HEAD.

CERTIFICATE

THIS IS TO CERTIFY THAT THE ABOVE PLAT WAS PREPARED AND LOCATION AS SHOWN WAS STAKED ON THE GROUND FROM FIELD NOTES OF ACTUAL SURVEYS MADE BY ME OR UNDER MY SUPERVISION AND THAT THE SAME ARE TRUE AND CORRECT TO THE BEST OF MY KNOWLEDGE AND BELIEF.

Revised: 09-26-11 D.R.B.

WC 1921 Brass Cap 1.2' High
Lat: 39.502167°
Long: 108.013714°

REGISTERED LAND SURVEYOR
STATE OF COLORADO
10-000-2011

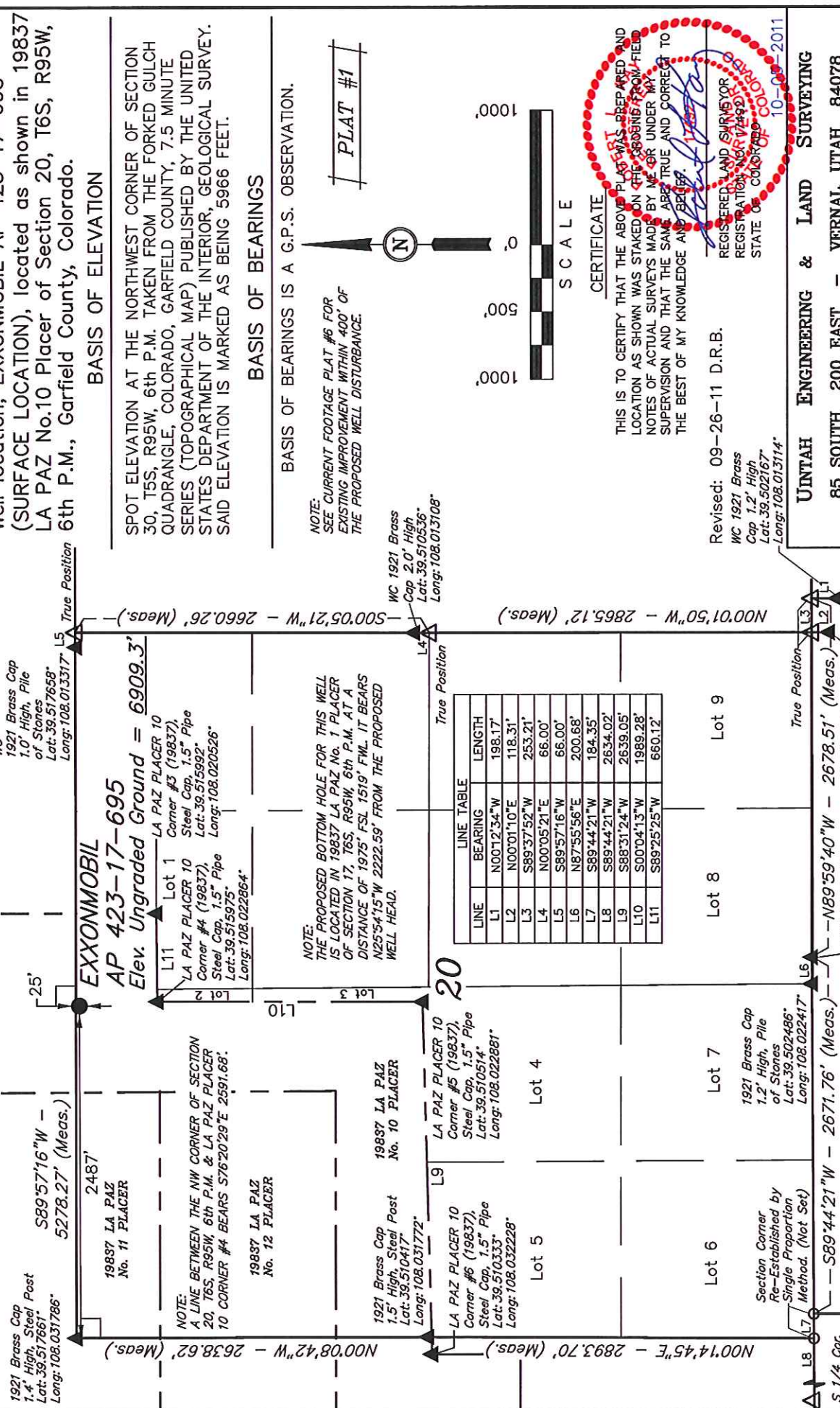
UNTAH ENGINEERING & LAND SURVEYING
85 SOUTH 200 EAST - VERNAL, UTAH 84078
(435) 789-1017

SCALE 1" = 1000'	DATE SURVEYED: 04-28-10	DATE DRAWN: 03-17-11
PARTY B.B. B.J.	REFERENCES G.L.O. PLAT	
WEATHER COOL	FILE	
WILLIAMS PRODUCTION RMT COMPANY		

NAD 83 (SURFACE LOCATION)	
LATITUDE = 39°31'03.33" (39.517592)	
LONGITUDE = 108°01'22.71" (108.022975)	
STATE PLANE-COLO. CENTRAL-NAD 83	
N = 1623293.999	
E = 2288325.369	

LEGEND:

- 90° SYMBOL
- PROPOSED WELL HEAD.
- SECTION CORNERS LOCATED.
- SECTION CORNERS RE-ESTAB. (Not Set on Ground)



WILLIAMS PRODUCTION RMT COMPANY

19942 SHERIDAN
PLACER No. 8

LATITUDE = 39°31'23.09" (39.523081)
 LONGITUDE = 108°01'35.07" (108.026408)
 STATE PLANE--(COLO. CENTRAL--NAD 83)
 N = 1625319.700
 E = 2287412.500

SECTION CORNERS RE-
(Not Set on Ground)

Revised: 09-23-11 D.R.B.

85 SOUTH 200 EAST - VERNAL, UTAH 84078

(435) 789-1017

SCALE	DATE SURVEYED:	DATE DRAWN:
1" = 1000'	04-28-10	03-17-11

PARTY	REFERENCES
B.B.	D.B.B.
B.B.	G10 PLAT

WEATHER	FILE
---------	------

COOL
WILLIAMS PRODUCTION RMT COMPANY

BASIS OF ELEVATION

SPOT ELEVATION AT THE NORTHWEST CORNER OF SECTION 30, T5S, R95W, 6th P.M. TAKEN FROM THE FORKED GULCH QUADRANGLE, COLORADO, GARFIELD COUNTY, 7.5 MINUTE SERIES (TOPOGRAPHICAL MAP) PUBLISHED BY THE UNITED STATES DEPARTMENT OF THE INTERIOR, GEOLOGICAL SURVEY. SAID ELEVATION IS MARKED AS BEING 5966 FEET.

BASIS OF BEARINGS

BASIS OF BEARINGS IS A G.P.S. OBSERVATION.

19837 LA PAZ
No. 8 PLACER

19837 LA PAZ
No. 9 PLACER

19837 LA PAZ
No. 9 PLACER

EXXONMOBIL

TARGET BOTTOM HOLE

Lot

NOTE:
A LINE BETWEEN THE SW CORNER OF
SECTION 17, T6S, R95W, 6th P.M. &
LA PAZ PLACER 10 CORNER #4 BEARS
S76°20'29"E 2591.68'

Lot 3

S89°57'16"W - 5278.27' (Meas.)

LA PAZ PLACER 10
Corner #3 (19837).
Steel Cap, 1.5" Pipe
Lat: 39.515992.
Long: 108.020526.

LA PAZ PLACER 10
Corner #4 (19837).

Steel Cap, 1.5" Pipe
Lat: 39.515975
Long: 108.022864

Long: 108.022864°

LATITUDE = 39°31'23.09" (39.523081)
LONGITUDE = 108°01'35.07" (108.026408)

STATE PLANE--(COLO. CENTRAL--NAD 83)

N = 1625319.700

E = 2287412.500

CERTIFICATE

THIS IS TO CERTIFY THAT THE ABOVE PLAT WAS PREPARED AND
LOCATION AS SHOWN WAS STAKED ON THE 3800SBS FROM FIELD
NOTES OF ACTUAL SURVEYS MADE BY ME OR UNDER MY
SUPERVISION AND THAT THE SAME ARE TRUE AND CORRECT TO
THE BEST OF MY KNOWLEDGE AND BELIEF.

REGISTERED LAND SURVEYOR
REGISTRATION NO. 17492
STATE OF COLORADO

10-03-2011

UNTAH ENGINEERING & LAND SURVEYING

85 SOUTH 200 EAST - VERNAL, UTAH 84078

(435) 789-1017

SCALE	DATE SURVEYED:	DATE DRAWN:
1" = 1000'	04-28-10	03-17-11

PARTY	REFERENCES
B.B.	D.B.B.
B.B.	G10 PLAT

WEATHER	FILE
---------	------

COOL
WILLIAMS PRODUCTION RMT COMPANY