

WILLIAMS PRODUCTION RMT COMPANY

Well location, EXXONMOBIL AP 324-17-695 (SURFACE LOCATION), located as shown in 19837 LA PAZ No.10 Placer of Section 20, T6S, R95W, 6th P.M., Garfield County, Colorado.

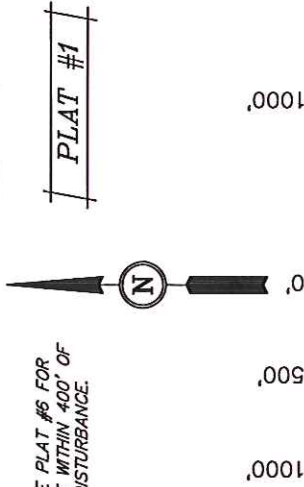
EXXONMOBIL

SPOT ELEVATION AT THE NORTHWEST CORNER OF SECTION 30, T5S, R95W, 6th P.M. TAKEN FROM THE FORKED GULCH QUADRANGLE, COLORADO, GARFIELD COUNTY, 7.5 MINUTE SERIES (TOPOGRAPHICAL MAP) PUBLISHED BY THE UNITED STATES DEPARTMENT OF THE INTERIOR, GEOLOGICAL SURVEY. SAID ELEVATION IS MARKED AS BEING 5966 FEET.

ing: 100.0000+

BASIS OF BEARINGS IS A G.P.S. OBSERVATION.

NOTE:
SEE CURRENT FOOTAGE PLAT #6 FOR
EXISTING IMPROVEMENT WITHIN 400' OF
THE PROPOSED WELL DISTURBANCE.



CERTIFICATE

THIS IS TO CERTIFY THAT THE ABOVE PLAT WAS PREPARED AND
LOCATION AS SHOWN WAS STAKED ON THE 3000S ACRON FIELD
NOTES OF ACTUAL SURVEYS MADE BY ME OR UNDER MY
SUPERVISION AND THAT THE SAME ARE TRUE AND CORRECT TO
THE BEST OF MY KNOWLEDGE AND BELIEF.

Revised: 09-26-11 D.R.B.

WC 1921 Brass
Cap 1.2' High
Lat: 39.502167°
Long: 108.013114°

UTAH ENGINEERING & LAND SURVEYING

85 SOUTH 200 EAST - VERNAL, UTAH 84078

(435) 789-1017

DATE SURVEYED: 04-28-10	DATE DRAWN: 03-17-11
----------------------------	-------------------------

REFERENCES

G.L.O. PLAT

1000

WILLIAMS PRODUCTION RMT COMPANY

1921 Brass Cap
1.4' High, Steel Post
Lat: 39.517661°
Long: 108.031786°

S89°57'16"W -
5278.27' (Meas.)

19837 LA PAZ
No. 11 PLACER

NOTE:
A LINE BETWEEN THE NW CORNER OF SECTION
20, T6S, R95W, 6th P.M. & LA PAZ PLACER
10 CORNER #4 BEARS S76°20'29"E 2591.68'.

19837 LA PAZ
No. 12 PLACER

1921 Brass Cap
1.5' High, Steel Post
Lat: 39.510417°
Long: 108.031772°

LA PAZ PLACER 10
Corner #6 (19837),
Steel Cap, 1.5" Pipe
Lat: 39.510333;
Long: 108.022881

Lot 4

LA PAZ PLACER 10
Corner #5 (19837).
Steel Cap, 1.5" Pipe
Lat: 39.510514°
Long: 108.022881°

19837 LA PAZ
No. 10 PLACER

LINE TABLE		True
LINE	BEARING	LENGTH
L1	N0012°34'W	198.17'
L2	N0001°10'E	118.31'
L3	S89°37'52"W	253.21'
L4	N0005°21'E	66.00'
L5	S89°57°16'W	66.00'
L6	N87°55'56"E	200.68'
L7	S89°44'21"W	184.35'
L8	S89°44'21"W	263.04'
L9	S88°31'24"W	283.09'05"
L10	S00°04'13"W	1989.28'
L11	S89°25'25"E	560.12'

Lot 7

Lot 8

10

Section Corner
Re-Established by
Single Proportion
Method. (Not Set)

76' (Meas.) - 1921 Brass Cap
1.2' High, Pile
of Stones
Lat: 39.502486°
Long: 108.022417°

-N89°59'40"
-1921 Brass Cap
0.5' High, Pile
of Stones
Lat: 39.502506"
Long: 108.021708"

2678.51' (Meas.)
WC 1921 Brass Cap—
1.2' High, Steel Post
Lat: 39.501953°
Long: 108.012214°

LEGEND:

90° SYMBOL

PROPOSED WELL HEAD. *Long*

SECTION CORNERS LOCATED.

SECTION CORNERS RE-ESTAB.
(Not Set on Ground)

$$\text{PDOP} = 2.4$$

NAD 83 (SURFACE LOCATION)

LATITUDE = 39°31'03.18" (39.517550)

LONGITUDE = 108 01 22.67 (108.0229667)
STATE PLANE--(COLO. CENTRAL--NAD 83)
N = 1623279.298
E = 2288328.066

WILLIAMS PRODUCTION RMT COMPANY

Well location, EXXONMOBIL AP 324-17-695 (TARGET BOTTOM HOLE), located as shown in 19837 LA PAZ No.11 Placer of Section 17, T6S, R95W, 6th P.M., Garfield County, Colorado.

BASIS OF ELEVATION

SPOT ELEVATION AT THE NORTHWEST CORNER OF SECTION 30, T5S, R95W, 6th P.M. TAKEN FROM THE FORKED GULCH QUADRANGLE, COLORADO, GARFIELD COUNTY, 7.5 MINUTE SERIES (TOPOGRAPHICAL MAP) PUBLISHED BY THE UNITED STATES DEPARTMENT OF THE INTERIOR, GEOLOGICAL SURVEY. SAID ELEVATION IS MARKED AS BEING 5966 FEET.

BASIS OF BEARINGS

BASIS OF BEARINGS IS A G.P.S. OBSERVATION.

