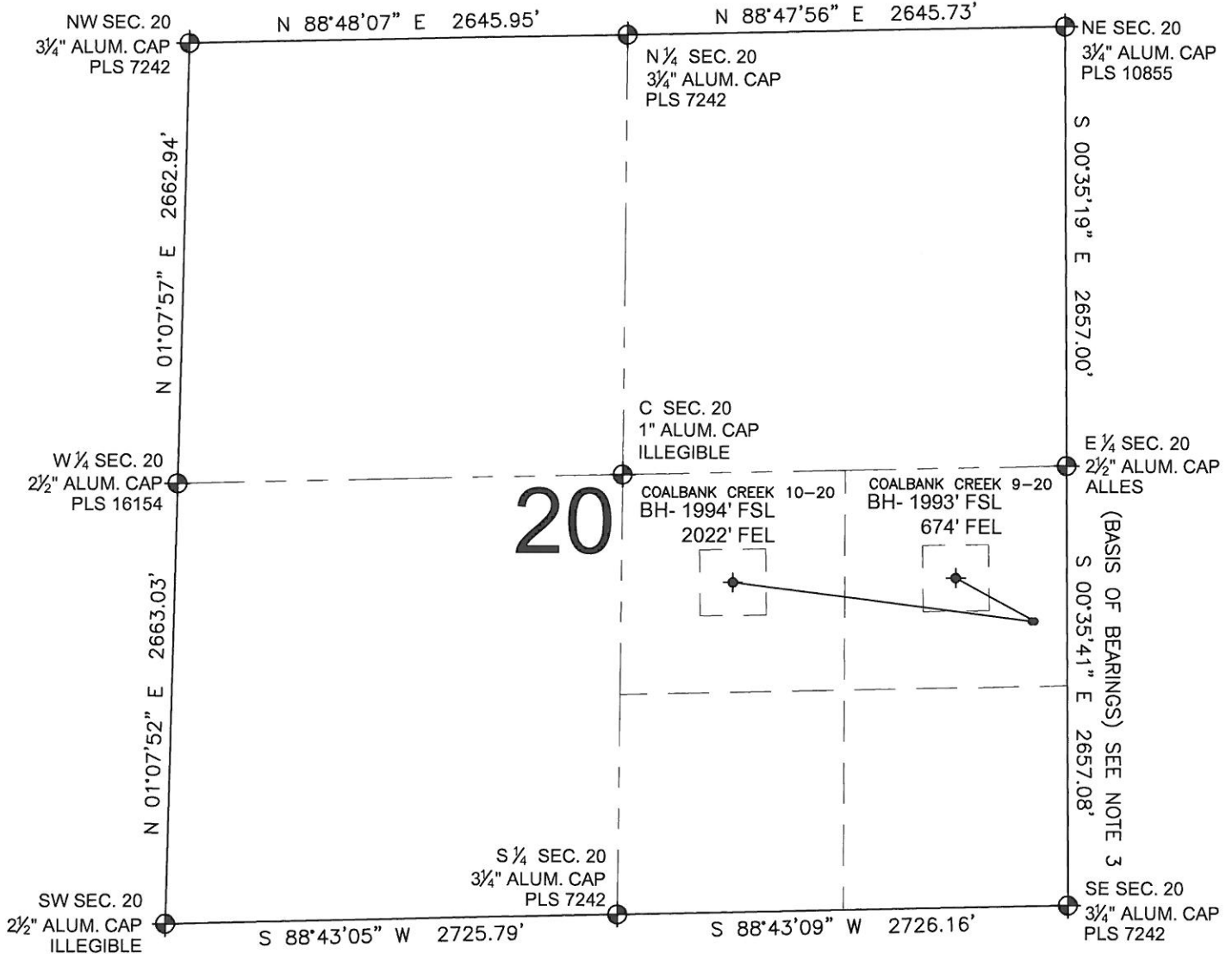


PAD DRAWING: COALBANK CREEK 2 PAD

SECTION 20, TOWNSHIP 7 NORTH, RANGE 66 WEST, 6TH P.M.



NOTES:

1. THIS FIELD SURVEY CONFORMS TO THE MINIMUM STANDARDS SET BY THE C.O.G.C.C., RULE NO. 215
2. HORIZONTAL POSITIONS AND ORTHOMETRIC ELEVATIONS SHOWN AT THE WELL HEAD, ARE BASED ON GPS-RTK POSITIONS DERIVED FROM MINIMUM 2-HOUR STATIC OBSERVATIONS CORRECTED BY THE NATIONAL GEODETIC SURVEY ONLINE POSITIONING USER SERVICE, O.P.U.S. DATUM: HORIZONTAL = NAD83/2007, VERTICAL = NAVD88
3. THE BASIS OF BEARINGS ARE STATE PLANE COORDINATE SYSTEM GRID BEARINGS SHOWN HEREON BETWEEN THE DESCRIBED THE MONUMENTS SHOWN HEREON.
4. GRID DISTANCES ARE SHOWN, AS MEASURED IN THE FIELD, WITH TIES TO WELLS MEASURED PERPENDICULAR TO SECTION LINES.

LEGEND

- = EXISTING MONUMENT
 = BOTTOM HOLE
 BH= BOTTOM HOLE
 = PROPOSED WELL
 = EXISTING WELL

NOTES:

COALBANK CREEK 10-20 TO BE AT 1722' FSL, 216' FEL.
 BOTTOM HOLE AT 1994' FSL & 2022' FEL.
 COALBANK CREEK 9-20 TO BE AT 1722' FSL, 196' FEL.
 BOTTOM HOLE AT 1993' FSL & 674' FEL.

PREPARED BY:

PFS

Petroleum Field Services, LLC
1801 W. 13th Ave.
Denver, CO 80204



BAYSWATER EXPLORATION & PRODUCTION, LLC

FIELD DATE:
07-07-11

DRAWING DATE:
12-27-11

BY:
TRW

PAD NAME:
COALBANK CREEK 2 PAD

SURFACE LOCATION:

WELD COUNTY, COLORADO
NE 1/4 SE 1/4, SEC. 20, T7N, R66W

