

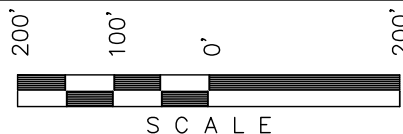
Encana OIL & GAS (USA) INC.

LOCATION DRAWING FOR

WELL PAD G15 7101

SECTION 15, T7S, R101W, 6th P.M.

SW 1/4 NE 1/4



Sheet 7a of 11

B.L.M.
(U.S.A.)

1/16 Section Line

COCO 012999

Lot 5

SCALE: 1" = 200'
DATE: 01-24-12
DRAWN BY: D.R.B.
Revised: 01-26-12 D.R.B.

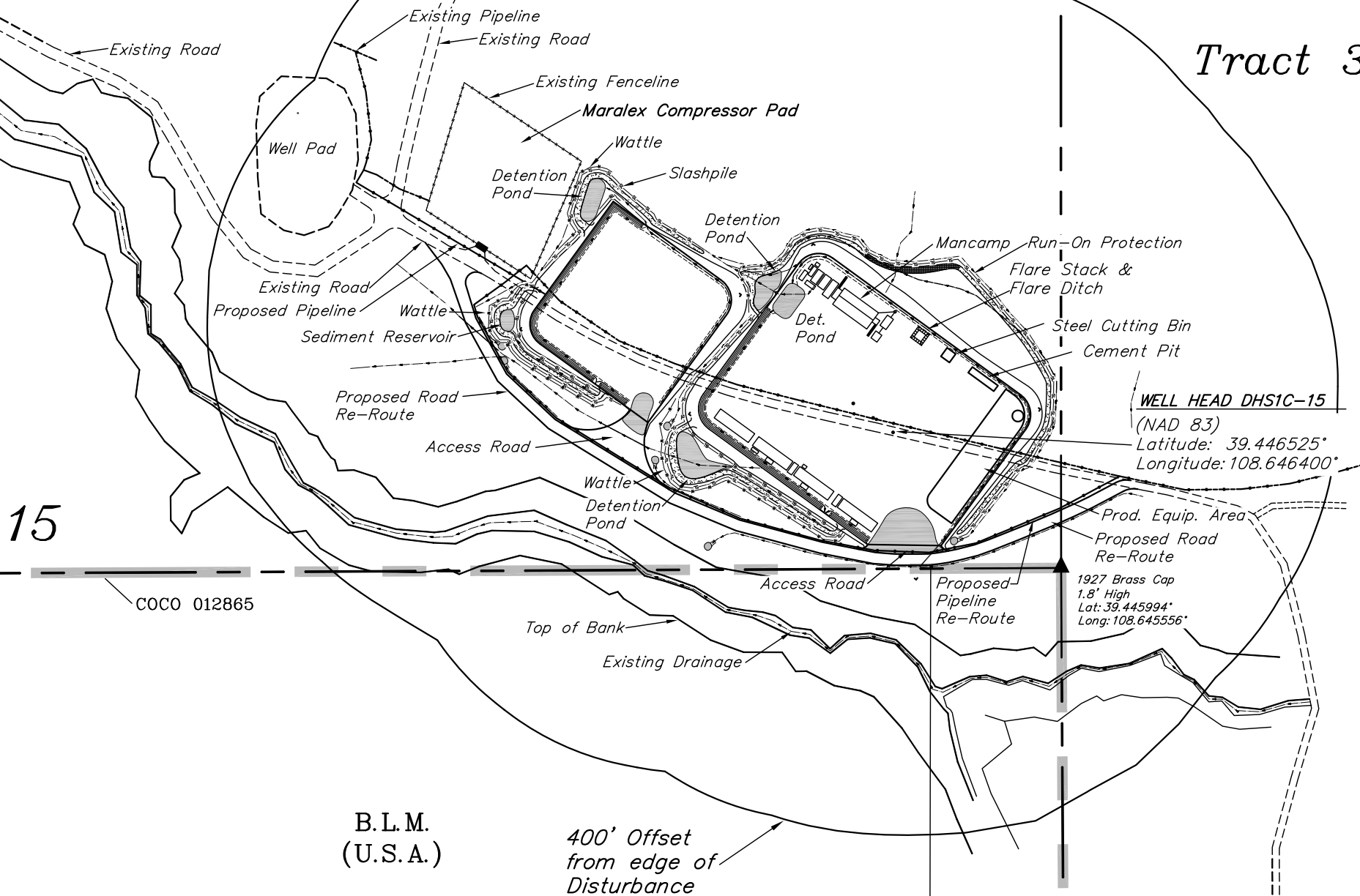
Sec. Cor. Re-Estab.
Using Grant Boundary
Method (Not Set on
Ground)
Lat: 39.449553°
Long: 108.650150°

Tract 40

ALBERTSON
CATTLE CO, LLLP



Tract 39



WELL HEAD DHS1C-15
(NAD 83)
Latitude: 39.446525°
Longitude: 108.646400°

1927 Brass Cap
1.8' High
Lat: 39.445994°
Long: 108.645556°

B.L.M.
(U.S.A.)

400' Offset
from edge of
Disturbance

ALBERTSON
CATTLE CO, LLLP

DISTURBANCE ACREAGE:

2.678 ± DRILLING OPERATIONS
1.642 ± INTERIM RECLAIM

CURRENT LAND USE

CROP LAND: ☐ IRRIGATED ☐ DRY LAND ☐ IMPROVED PASTURE ☐ HAY MEADOW ☐ CRP
NON-CROP LAND: ☒ RANGELAND ☐ TIMBER ☐ RECREATIONAL ☐ OTHER (Describe)
SUBDIVIDED: ☐ INDUSTRIAL ☐ COMMERCIAL ☐ RESIDENTIAL

FUTURE LAND USE

CROP LAND: ☐ IRRIGATED ☐ DRY LAND ☐ IMPROVED PASTURE ☐ HAY MEADOW ☐ CRP
NON-CROP LAND: ☒ RANGELAND ☐ TIMBER ☐ RECREATIONAL ☐ OTHER (Describe)
SUBDIVIDED: ☐ INDUSTRIAL ☐ COMMERCIAL ☐ RESIDENTIAL

PLANT COMMUNITY

☐ DISTURBED GRASSLAND
☐ NATIVE GRASSLAND
☐ SHRUB LAND
☐ PLAINS RIPARIAN
☐ MOUNTAIN RIPARIAN
☒ FOREST LAND
☐ WETLANDS AQUATIC
☐ ALPINE
☐ OTHER (Describe):

Existing Features

(Distance from DHS1C-15)

Building	N51°W 1,565'
Public Road	N68°W 700'
Property Line	SOUTH 236'
Utility	OVER 1 MILE
Surface Water	S21°W 330'
Railroad	S30°W 19.22 Miles

1/16 Section Line

COCO 012865

Lot 11

UINTAH ENGINEERING & LAND SURVEYING
85 So. 200 East * Vernal, Utah 84078 * (435) 789-1017