

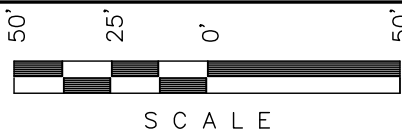
Encana OIL & GAS (USA) INC.

ADDENDUM TO LEGAL PLAT FOR

WELL PAD G15 7101

SECTION 15, T7S, R101W, 6th P.M.

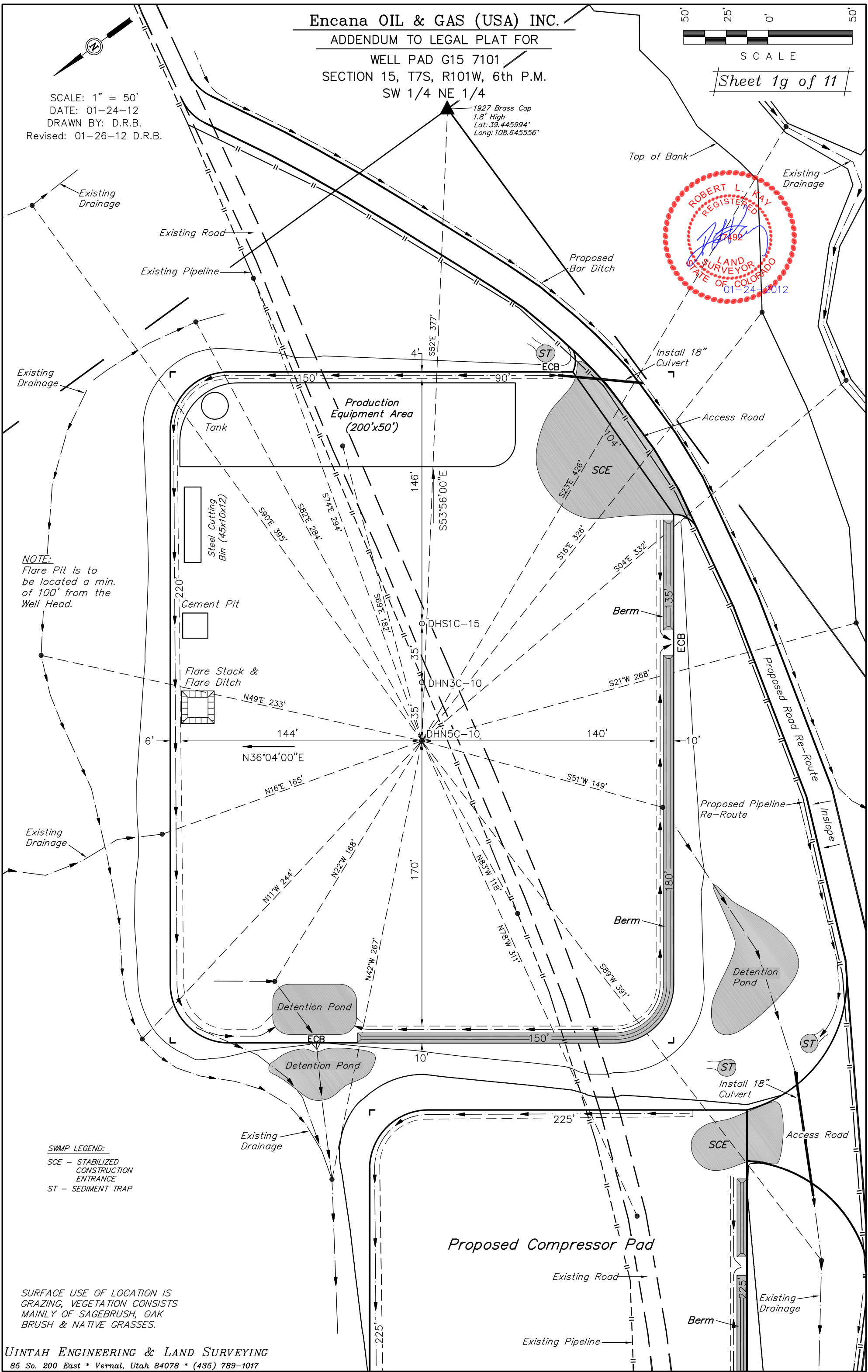
SW 1/4 NE 1/4



SCALE

Sheet 1g of 11

SCALE: 1" = 50'  
DATE: 01-24-12  
DRAWN BY: D.R.B.  
Revised: 01-26-12 D.R.B.



NOTE:  
Flare Pit is to  
be located a min.  
of 100' from the  
Well Head.

SWMP LEGEND:  
SCE - STABILIZED  
CONSTRUCTION  
ENTRANCE  
ST - SEDIMENT TRAP

SURFACE USE OF LOCATION IS  
GRAZING, VEGETATION CONSISTS  
MAINLY OF SAGEBRUSH, OAK  
BRUSH & NATIVE GRASSES.

Encana OIL & GAS (USA) INC.

WELL PAD INTERFERENCE PLAT

WELL PAD G15 7101

SECTION 15, T7S, R101W, 6th P.M.

SW 1/4 NE 1/4

50' 25' 0' 50'



S C A L E

Sheet 2 of 11

SCALE: 1" = 50'

DATE: 01-24-12

DRAWN BY: D.R.B.

Revised: 01-26-12 D.R.B.



START OF  
PRODUCING  
INTERVAL

S00°00'37"W 2797.23'  
(TO BOTTOM HOLE)

N88°36'00"E  
712.64'

S53°56'00"E

DHS1C-15

DHN3C-10

DHN5C-10

N36°04'00"E

N39°24'34"W  
911.43'

N70°35'03"W  
1973.84'

START OF  
PRODUCING  
INTERVAL

START OF  
PRODUCING  
INTERVAL

N00°11'35"W 5598.86'  
(TO BOTTOM HOLE)

N00°16'33"W 5620.35'  
(TO BOTTOM HOLE)



# Encana OIL & GAS (USA) INC.

SCALE: 1" = 50'

DATE: 12-20-11

DRAWN BY: D.R.B.

Revised: 01-06-12 D.R.B.

Revised: 01-12-12 D.R.B.

Revised: 01-24-12 D.R.B.

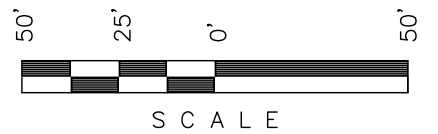
Revised: 01-26-12 D.R.B.

## CONSTRUCTION LAYOUT FOR

WELL PAD G15 7101

SECTION 15, T7S, R101W, 6th P.M.

SW 1/4 NE 1/4



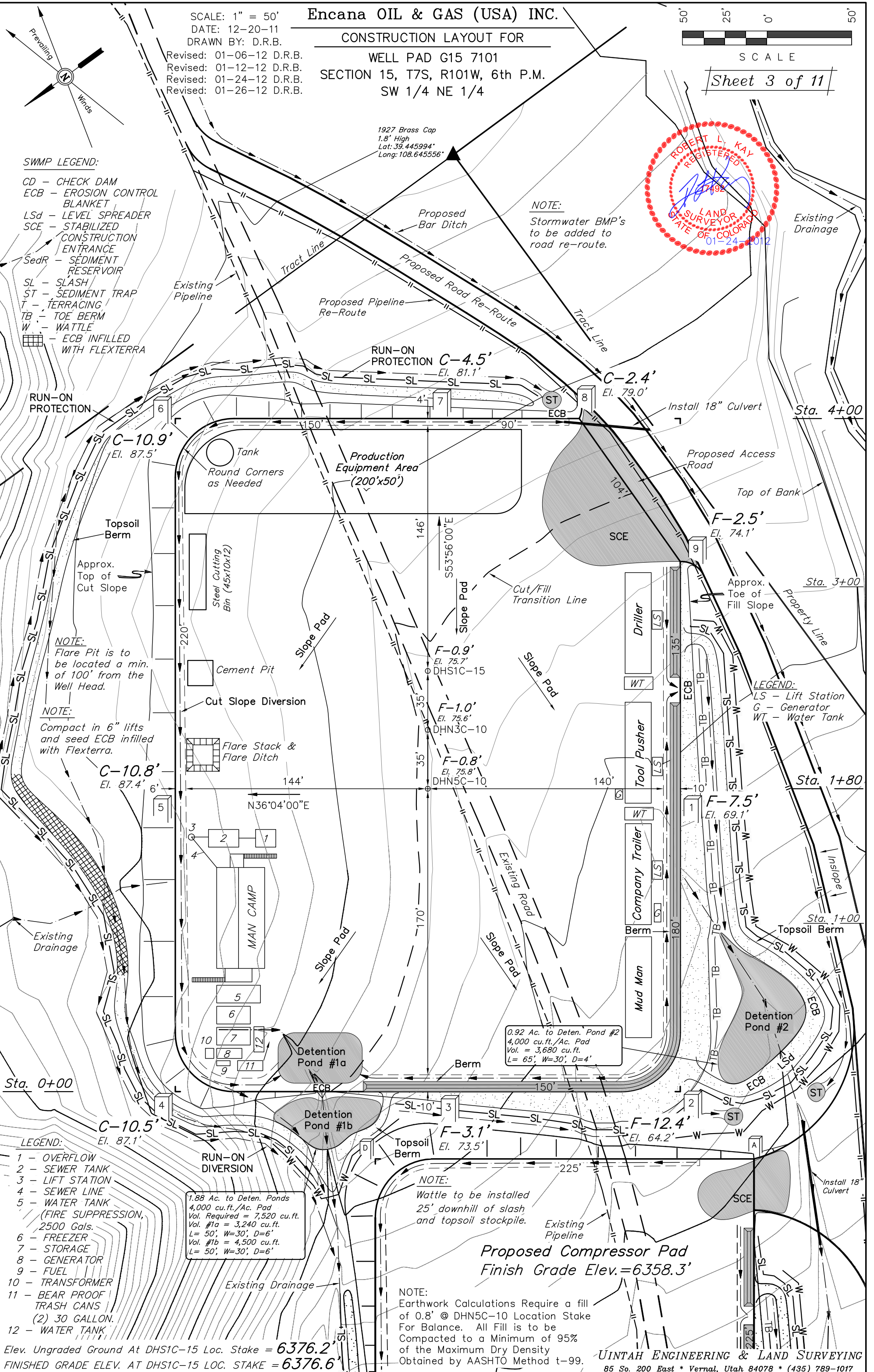
Sheet 3 of 11

### SWMP LEGEND:

- CD - CHECK DAM
- ECB - EROSION CONTROL BLANKET
- LSd - LEVEL SPREADER
- SCE - STABILIZED CONSTRUCTION ENTRANCE
- SedR - SEDIMENT RESERVOIR
- SL - SLASH
- ST - SEDIMENT TRAP
- T - TERRACING
- TB - TOE BERM
- W - WATTLE
- ECB INFILLED WITH FLEXTERRA

### NOTE:

Stormwater BMP's to be added to road re-route.



Encana OIL & GAS (USA) INC.

PRE-CONSTRUCTION LAYOUT FOR

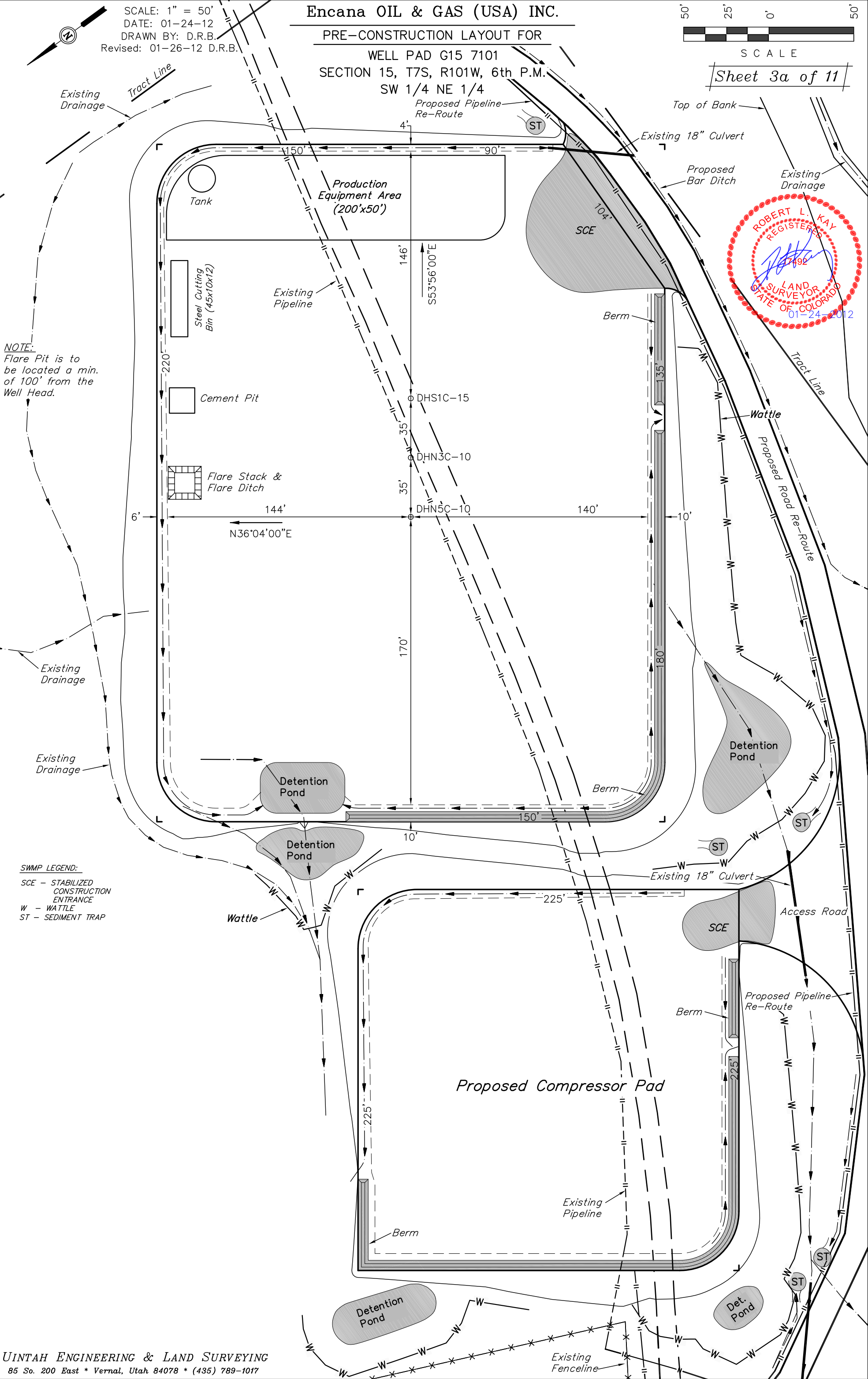
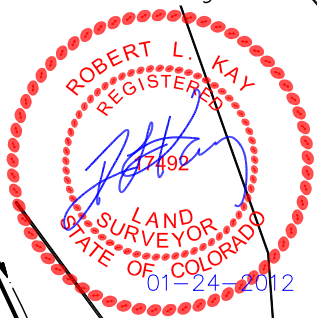
WELL PAD G15 7101  
SECTION 15, T7S, R101W, 6th P.M.  
SW 1/4 NE 1/4

SCALE: 1" = 50'  
DATE: 01-24-12  
DRAWN BY: D.R.B.  
Revised: 01-26-12 D.R.B.

50' 25' 0' 50'  
SCALE

Sheet 3a of 11

NOTE:  
Flare Pit is to  
be located a min.  
of 100' from the  
Well Head.





Encana OIL & GAS (USA) INC.

CONSTRUCTION LAYOUT FOR  
G15 7101 COMPRESSOR PAD  
SECTION 15, T7S, R101W, 6th P.M.  
SW 1/4 NE 1/4



SCALE

Sheet 3b of 11

SCALE: 1" = 50'

DATE: 12-20-11

DRAWN BY: D.R.B.

Revised: 01-12-12 D.R.B.

Revised: 01-19-12 D.R.B.

Revised: 01-26-12 D.R.B.

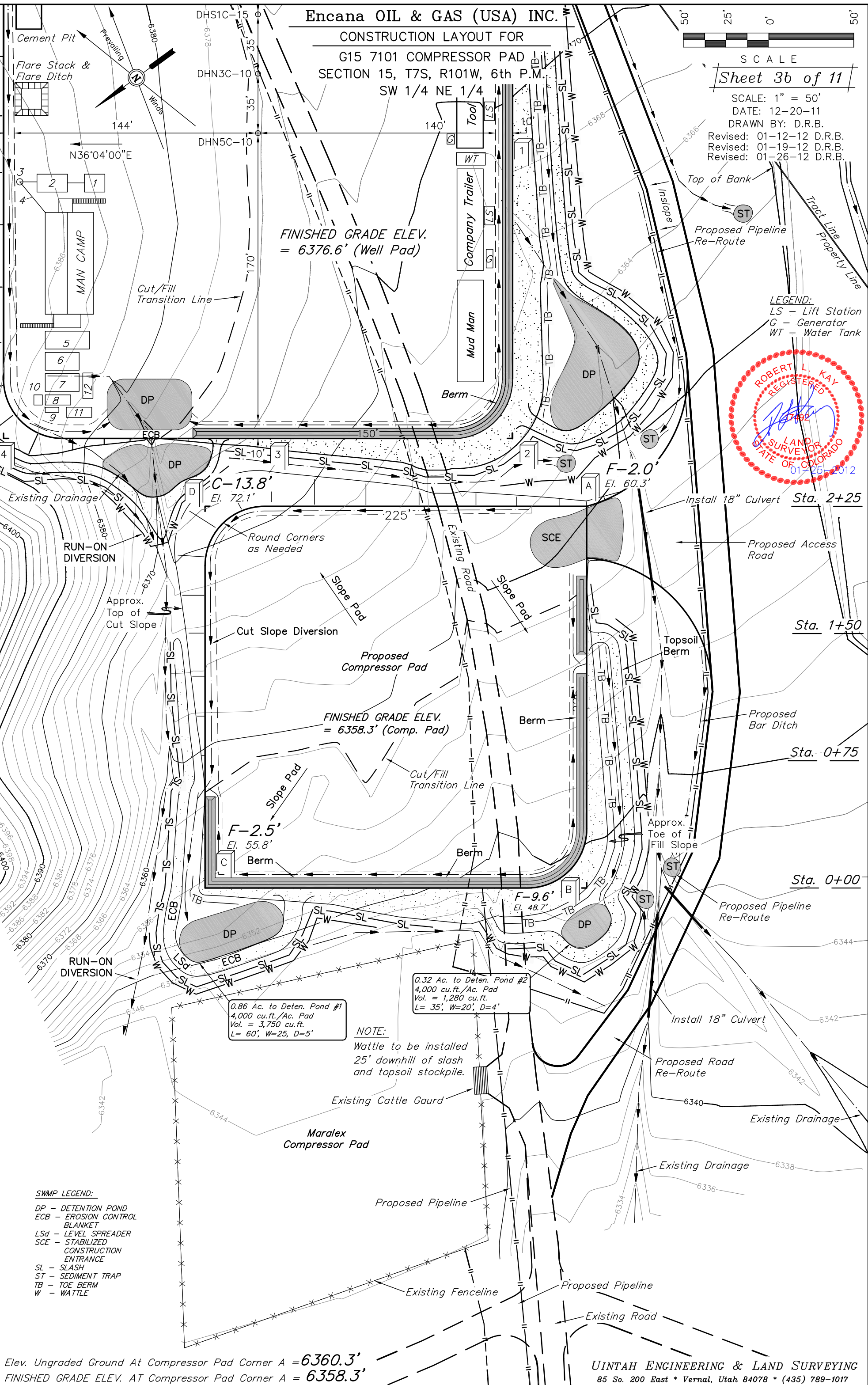
FINISHED GRADE ELEV.  
= 6376.6' (Well Pad)

LEGEND:

LS - Lift Station

G - Generator

WT - Water Tank



NOTE:  
Wattle to be installed  
25' downhill of slash  
and topsoil stockpile.

SWMP LEGEND:

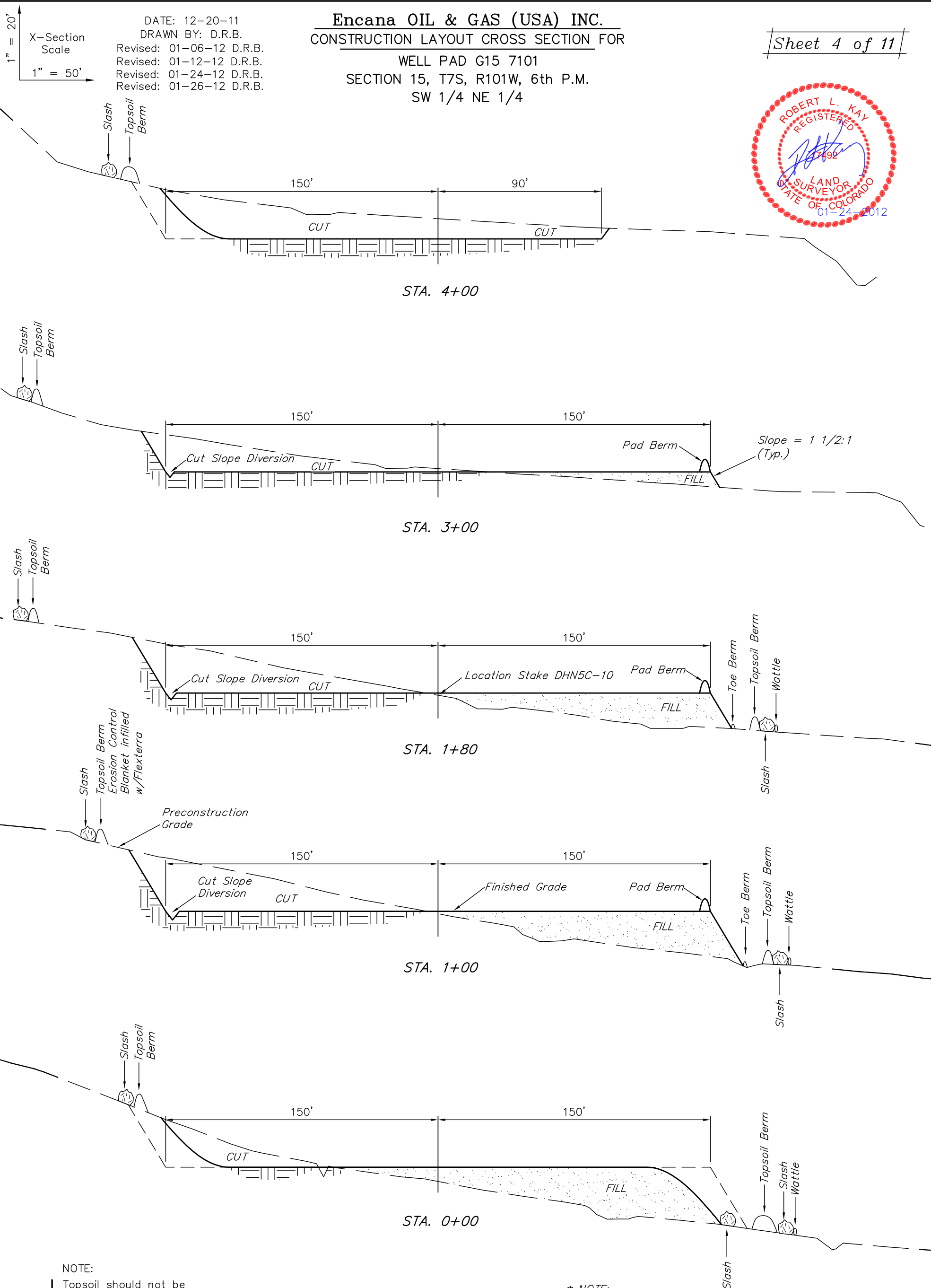
- DP - DETENTION POND
- ECB - EROSION CONTROL BLANKET
- LSd - LEVEL SPREADER
- SCE - STABILIZED CONSTRUCTION ENTRANCE
- SL - SLASH
- ST - SEDIMENT TRAP
- TB - TOE BERM
- W - WATTLE

Elev. Ungraded Ground At Compressor Pad Corner A = 6360.3'  
FINISHED GRADE ELEV. AT Compressor Pad Corner A = 6358.3'

UINTAH ENGINEERING & LAND SURVEYING  
85 So. 200 East \* Vernal, Utah 84078 \* (435) 789-1017

Encana OIL & GAS (USA) INC.  
CONSTRUCTION LAYOUT CROSS SECTION FOR  
WELL PAD G15 7101  
SECTION 15, T7S, R101W, 6th P.M.  
SW 1/4 NE 1/4

Sheet 4 of 11



NOTE:

Topsoil should not be Stripped Below Finished Grade on Substructure Area.

\* NOTE:  
FILL QUANTITY INCLUDES 5% FOR COMPACTION

APPROXIMATE YARDAGES

(6") Topsoil Stripping = 2,510 Cu. Yds.  
Remaining Location = 11,190 Cu. Yds.  
TOTAL CUT = 13,700 CU.YDS.  
FILL = 11,190 CU.YDS.

EXCESS MATERIAL = 2,510 Cu. Yds.  
Topsoil = 2,510 Cu. Yds.  
EXCESS UNBALANCE = 0 Cu. Yds.  
(After Interim Rehabilitation)

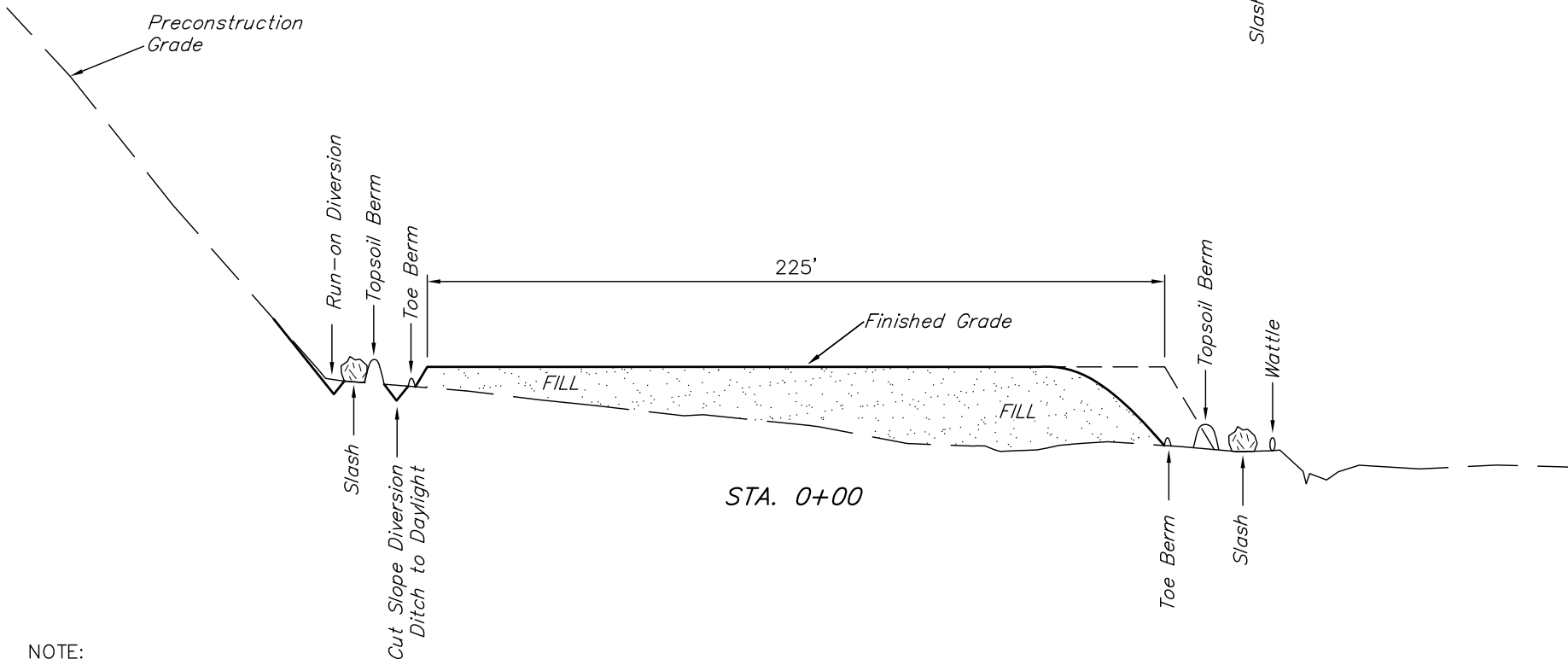
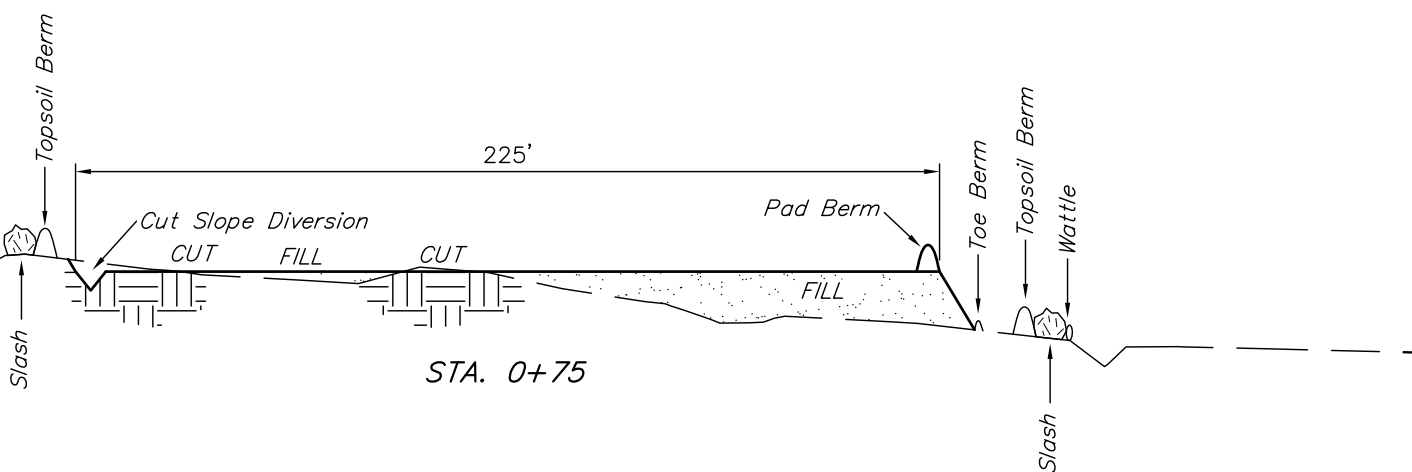
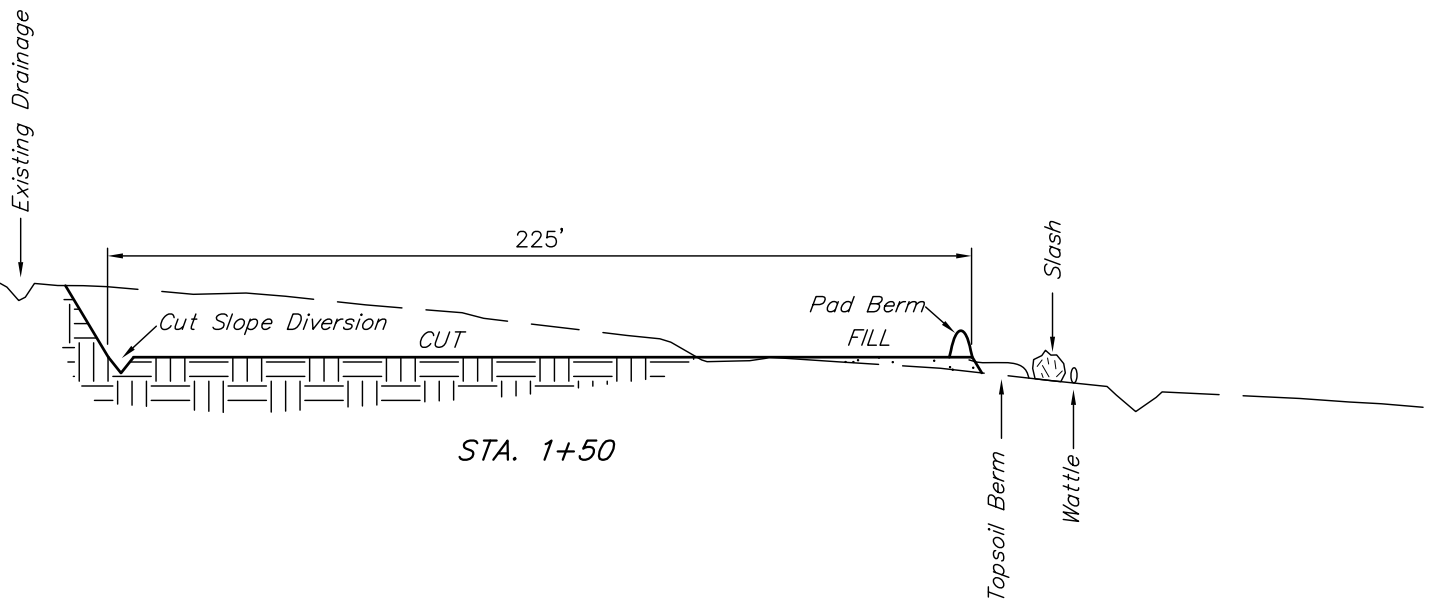
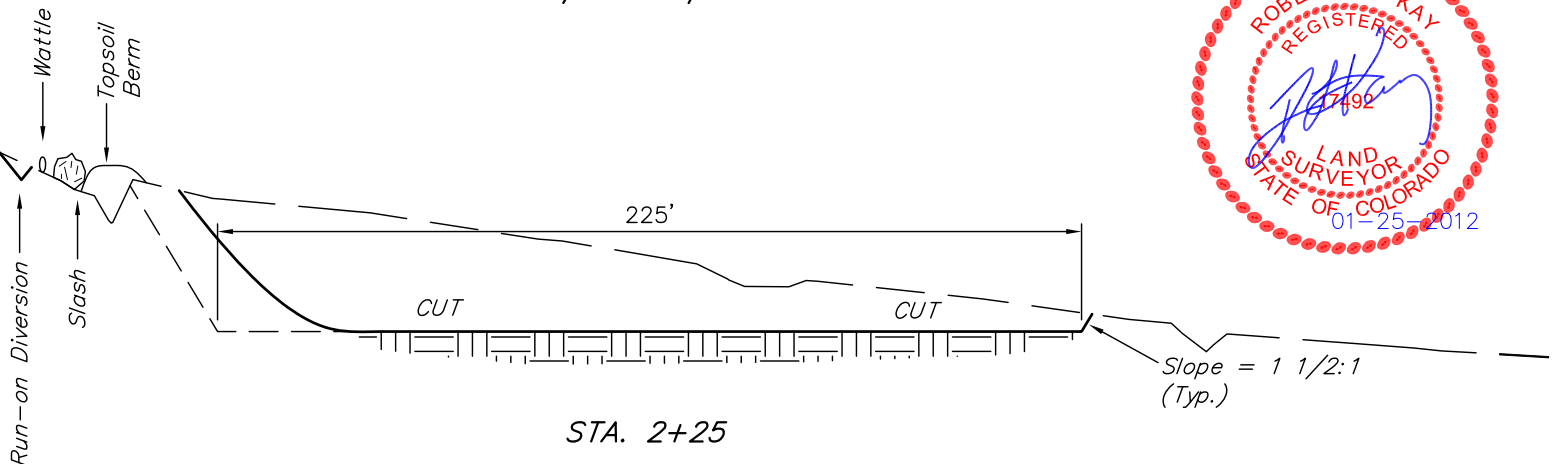
Encana OIL & GAS (USA) INC.  
CONSTRUCTION LAYOUT CROSS SECTION FOR  
G15 7101 COMPRESSOR PAD  
SECTION 15, T7S, R101W, 6th P.M.  
SW 1/4 NE 1/4

Sheet 4b of 11



1" = 20'  
X-Section  
Scale  
1" = 50'

DATE: 01-06-12  
DRAWN BY: D.R.B.  
Revised: 01-19-12 D.R.B.



NOTE:  
Topsoil should not be Stripped Below Finished Grade on Substructure Area.

\* NOTE:  
FILL QUANTITY INCLUDES 5% FOR COMPACTION

APPROXIMATE YARDAGES

(6") Topsoil Stripping = 1,130 Cu. Yds.  
Remaining Location = 4,600 Cu. Yds.  
TOTAL CUT = 5,730 CU.YDS.  
FILL = 4,600 CU.YDS.

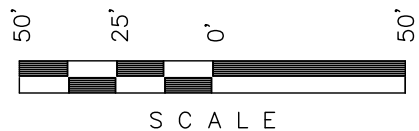
EXCESS MATERIAL = 1,130 Cu. Yds.  
Topsoil = 1,130 Cu. Yds.  
EXCESS UNBALANCE = 0 Cu. Yds.  
(After Interim Rehabilitation)



Encana OIL & GAS (USA) INC.

TYPICAL RIG LAYOUT FOR

WELL PAD G15 7101  
SECTION 15, T7S, R101W, 6th P.M.  
SW 1/4 NE 1/4



SCALE

Sheet 5 of 11

SCALE: 1" = 50'  
DATE: 01-24-12  
DRAWN BY: D.R.B.  
Revised: 01-26-12, D.R.B.



NOTE:  
Flare Pit is to  
be located a min.  
of 100' from the  
Well Head.

LEGEND:  
LS - Lift Station  
G - Generator  
WT - Water Tank

SWMP LEGEND:  
SCE - STABILIZED  
CONSTRUCTION  
ENTRANCE  
W - WATTLE  
ST - SEDIMENT TRAP

LEGEND:  
1 - OVERFLOW  
2 - SEWER TANK  
3 - LIFT STATION  
4 - SEWER LINE  
5 - WATER TANK  
(FIRE SUPPRESSION,  
2500 Gals.  
6 - FREEZER  
7 - STORAGE  
8 - GENERATOR  
9 - FUEL  
10 - TRANSFORMER  
11 - BEAR PROOF  
TRASH CANS  
(2) 30 GALLON.  
12 - WATER TANK



Encana OIL & GAS (USA) INC.

PRODUCTION SCHEMATIC FOR

WELL PAD G15 7101

SECTION 15, T7S, R101W, 6th P.M.

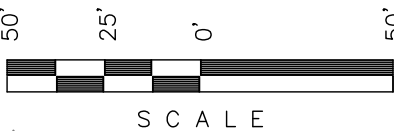
SW 1/4 NE 1/4

SCALE: 1" = 50'

DATE: 01-24-12

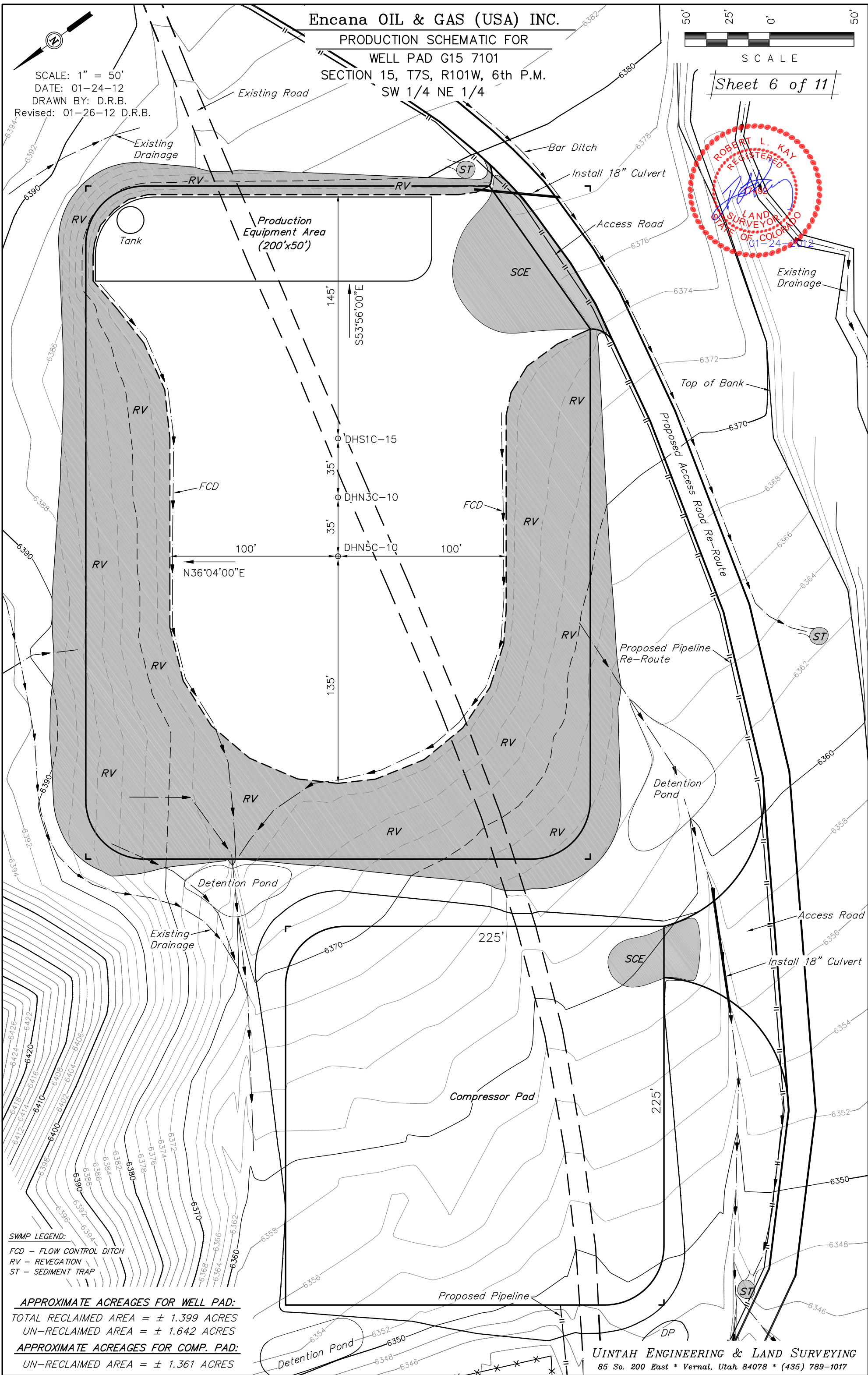
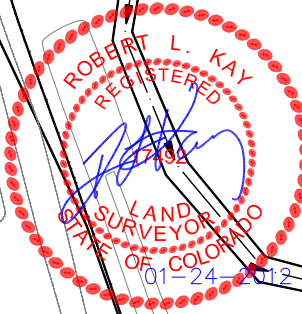
DRAWN BY: D.R.B.

Revised: 01-26-12 D.R.B.



SCALE

Sheet 6 of 11



SWMP LEGEND:

FCD - FLOW CONTROL DITCH

RV - REVEGETATION

ST - SEDIMENT TRAP

APPROXIMATE ACREAGES FOR WELL PAD:

TOTAL RECLAIMED AREA = ± 1.399 ACRES

UN-RECLAIMED AREA = ± 1.642 ACRES

APPROXIMATE ACREAGES FOR COMP. PAD:

UN-RECLAIMED AREA = ± 1.361 ACRES

UINTAH ENGINEERING & LAND SURVEYING  
85 So. 200 East \* Vernal, Utah 84078 \* (435) 789-1017



Encana OIL & GAS (USA) INC.

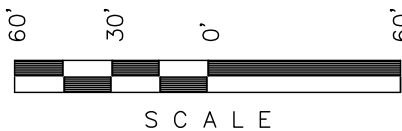
SURFACE DISTURBANCE AREA FOR

WELL PAD G15 7101

SECTION 15, T7S, R101W, 6th P.M.

SW 1/4 NE 1/4

SCALE: 1" = 60'  
DATE: 12-24-12  
DRAWN BY: D.R.B.  
Revised: 01-26-12 D.R.B.



SCALE

Sheet 7 of 11

SWMP LEGEND:

CD - CHECK DAM  
ECB - EROSION CONTROL  
BLANKET  
LSd - LEVEL SPREADER  
SCE - STABILIZED  
CONSTRUCTION  
ENTRANCE  
SedR - SEDIMENT  
RESERVOIR  
SL - SLASH  
ST - SEDIMENT TRAP  
T - TERRACING  
TB - TOE BERM  
W - WATTLE  
ECB INFILLED  
WITH FLEXTERRA

LEGEND:

LS - Lift Station  
G - Generator  
WT - Water Tank

LEGEND:

1 - OVERFLOW  
2 - SEWER TANK  
3 - LIFT STATION  
4 - SEWER LINE  
5 - WATER TANK  
(FIRE SUPPRESSION,  
2500 Gals.  
6 - FREEZER  
7 - STORAGE  
8 - GENERATOR  
9 - FUEL  
10 - TRANSFORMER  
11 - BEAR PROOF  
TRASH CANS  
(2) 30 GALLON.  
12 - WATER TANK

NOTE:  
Flare Pit is to  
be located a min.  
of 100' from the  
Well Head.

| LINE TABLE |             |        |
|------------|-------------|--------|
| LINE       | BEARING     | LENGTH |
| L1         | S84°12'37"E | 14.66' |
| L2         | N08°17'19"E | 41.98' |
| L3         | N65°22'39"E | 30.08' |
| L4         | S60°01'34"E | 22.21' |
| L5         | S75°02'06"E | 43.71' |
| L6         | N82°39'42"E | 36.75' |
| L7         | N36°48'02"E | 42.82' |
| L8         | N64°36'42"E | 39.28' |
| L9         | S40°18'43"E | 23.30' |
| L10        | S64°22'10"E | 30.31' |
| L11        | S87°28'49"E | 35.76' |
| L12        | S63°45'39"W | 15.00' |
| L13        | S64°11'26"W | 53.98' |
| L14        | N76°04'44"W | 33.11' |
| L15        | N65°25'44"W | 22.95' |
| L16        | N54°25'37"W | 20.92' |
| L17        | N33°40'30"W | 23.78' |
| L18        | N11°33'08"W | 39.36' |
| L19        | N55°53'33"W | 48.21' |
| L20        | N31°56'04"E | 15.23' |
| L21        | N60°50'05"W | 22.84' |
| L22        | S67°31'14"W | 24.88' |
| L23        | N53°32'07"W | 52.67' |
| L24        | N41°07'09"W | 27.26' |
| L25        | N00°21'04"E | 49.81' |

APPROXIMATE ACREAGES

APPROX. WELL DISTURBANCE = ± 6.169 ACRES  
ACCESS ROAD DISTURBANCE = ± 0.030 ACRES  
FOR WELL PAD  
ACCESS ROAD DISTURBANCE = ± 0.105 ACRES  
FOR COMPRESSOR PAD  
PIPELINE DISTURBANCE = ± 0.230 ACRES  
TOTAL = ± 6.534 ACRES

UINTAH ENGINEERING & LAND SURVEYING  
85 So. 200 East \* Vernal, Utah 84078 \* (435) 789-1017

Maralex Compressor Pad