
OXY GRAND JUNCTION EBUSINESS

**CC 697-05-63B
GRAND VALLEY
Garfield County , Colorado**

**Cement Surface Casing
31-Dec-2011**

Post Job Report

The Road to Excellence Starts with Safety

Sold To #: 344034	Ship To #: 9107149	Quote #:	Sales Order #: 9107149
Customer: OXY GRAND JUNCTION EBUSINESS	Customer Rep: Coombs, Henry		
Well Name: CC	Well #: 697-05-63B	API/UWI #: 05-045-20717	
Field: GRAND VALLEY	City (SAP): PARACHUTE	County/Parish: Garfield	State: Colorado
Lat: N 39.549 deg. OR N 39 deg. 32 min. 55.608 secs.	Long: W 108.23 deg. OR W -109 deg. 46 min. 11.244 secs.		
Contractor: H&P Drilling	Rig/Platform Name/Num: H&P 330		
Job Purpose: Cement Surface Casing			
Well Type: Development Well	Job Type: Cement Surface Casing		
Sales Person: HIMES, JEFFREY	Srvc Supervisor: KUKUS, CRAIG	MBU ID Emp #: 369124	

Job Personnel

HES Emp Name	Exp Hrs	Emp #	HES Emp Name	Exp Hrs	Emp #	HES Emp Name	Exp Hrs	Emp #
BURKE, BRENDAN Patrick	38	487782	KUKUS, CRAIG A	38	369124	SMITH, DUSTIN Michael	38	418015
SPARKS, CLIFFORD Paul	38	502476	WYCKOFF, RYAN Scott	28	476117			

Equipment

HES Unit #	Distance-1 way	HES Unit #	Distance-1 way	HES Unit #	Distance-1 way	HES Unit #	Distance-1 way
10205677	60 mile	10784053	60 mile	10872429	60 mile	11259883	60 mile
11360883	60 mile	4904	60 mile	6374L	60 mile		

Job Hours

Date	On Location Hours	Operating Hours	Date	On Location Hours	Operating Hours	Date	On Location Hours	Operating Hours
12/29/11	7	0	12/30/11	24	8	12/31/11	12	5

TOTAL Total is the sum of each column separately

Job

Formation Name	Top	Bottom	Called Out	Date	Time	Time Zone
Formation Depth (MD)			On Location	29 - Dec - 2011	12:00	MST
Form Type	BHST		Job Started	29 - Dec - 2011	22:00	MST
Job depth MD	2610. ft	Job Depth TVD	Job Completed	30 - Dec - 2011	08:47	MST
Water Depth		Wk Ht Above Floor	Departed Loc	31 - Dec - 2011	11:27	MST
Perforation Depth (MD)	From	To		31 - Dec - 2011	12:30	MST

Well Data

Description	New / Used	Max pressure psig	Size in	ID in	Weight lbm/ft	Thread	Grade	Top MD ft	Bottom MD ft	Top TVD ft	Bottom TVD ft
-------------	------------	-------------------	---------	-------	---------------	--------	-------	-----------	--------------	------------	---------------

Tools and Accessories

Type	Size	Qty	Make	Depth	Type	Size	Qty	Make	Depth	Type	Size	Qty	Make
Guide Shoe					Packer					Top Plug	9 5/8	1	HES
Float Shoe					Bridge Plug					Bottom Plug			
Float Collar					Retainer					SSR plug set			
Insert Float										Plug Container	9 5/8	1	HES
Stage Tool										Centralizers			

Miscellaneous Materials

Gelling Agt	Conc	Surfactant	Conc	Acid Type	Qty	Conc	%
Treatment Fld	Conc	Inhibitor	Conc	Sand Type	Size	Qty	

Fluid Data

Stage/Plug #: 1	Fluid #	Stage Type	Fluid Name	Qty	Qty uom	Mixing Density lbm/gal	Yield ft3/sk	Mix Fluid Gal/sk	Rate bbl/min	Total Mix Fluid Gal/sk
-----------------	---------	------------	------------	-----	---------	------------------------	--------------	------------------	--------------	------------------------

Stage/Plug #: 1	Fluid #	Stage Type	Fluid Name	Qty	Qty uom	Mixing Density lbm/gal	Yield ft3/sk	Mix Fluid Gal/sk	Rate bbl/min	Total Mix Fluid Gal/sk
-----------------	---------	------------	------------	-----	---------	------------------------	--------------	------------------	--------------	------------------------

Stage/Plug #: 1									
1	Water Spacer		20.00	bbl	8.33	.0	.0	4	
2	Gel Spacer		20.00	bbl	.	.0	.0	4	
3	Water Spacer		20.00	bbl	.	.0	.0	4	
4	VersaCem Lead Cement	VERSACEM (TM) SYSTEM (452010)	1070.0	sacks	12.3	2.33	12.62	6	12.62
	12.62 Gal	FRESH WATER							
5	VersaCem Tail Cement	VERSACEM (TM) SYSTEM (452010)	170.0	sacks	12.8	2.07	10.67	6	10.67
	10.67 Gal	FRESH WATER							
6	Displacement		193.00	bbl	.	.0	.0	6	
7	Topout Cement	HALCEM (TM) SYSTEM (452986)	500.0	sacks	12.5	1.97	10.96	2.8	10.96
	10.96 Gal	FRESH WATER							
Calculated Values		Pressures		Volumes					
Displacement	193	Shut In: Instant		Lost Returns	0	Cement Slurry	506	Pad	
Top Of Cement	NONE	5 Min		Cement Returns	0	Actual Displacement	193	Treatment	
Frac Gradient		15 Min		Spacers	60	Load and Breakdown		Total Job	760
Rates									
Circulating	RIG	Mixing	6	Displacement	6	Avg. Job	6		
Cement Left In Pipe	Amount	48 ft	Reason	Shoe Joint					
Frac Ring # 1 @	ID	Frac ring # 2 @	ID	Frac Ring # 3 @	ID	Frac Ring # 4 @	ID		
The Information Stated Herein Is Correct				Customer Representative Signature					

The Road to Excellence Starts with Safety

Sold To #: 344034		Ship To #: 9107149		Quote #:		Sales Order #: 9107149	
Customer: OXY GRAND JUNCTION EBUSINESS				Customer Rep: Coombs, Henry			
Well Name: CC			Well #: 697-05-63B			API/UWI #: 05-045-20717	
Field: GRAND VALLEY		City (SAP): PARACHUTE		County/Parish: Garfield		State: Colorado	
Legal Description:							
Lat: N 39.549 deg. OR N 39 deg. 32 min. 55.608 secs.				Long: W 108.23 deg. OR W -109 deg. 46 min. 11.244 secs.			
Contractor: H&P Drilling			Rig/Platform Name/Num: H&P 330				
Job Purpose: Cement Surface Casing						Ticket Amount:	
Well Type: Development Well			Job Type: Cement Surface Casing				
Sales Person: HIMES, JEFFREY			Srvc Supervisor: KUKUS, CRAIG			MBU ID Emp #: 369124	

Activity Description	Date/Time	Cht #	Rate bbl/min	Volume bbl		Pressure psig		Comments
				Stage	Total	Tubing	Casing	
Call Out	12/29/2011 12:00							
Depart Yard Safety Meeting	12/29/2011 14:00							SAFETY MEETING INVOLVING THE ENTIRE CMT CREW
Arrive At Loc	12/29/2011 18:00							WHEN CREW ARRIVED RIG WAS STILL DRILLING/ STARTED RUNNING CASING @ 22:30 / CREW ON LOCATION EARLY
Assessment Of Location Safety Meeting	12/29/2011 18:10							ASSESSMENT OF LOCATION INVOLVING THE ENTIRE CMT CREW
Pre-Rig Up Safety Meeting	12/29/2011 20:15							SAFETY MEETING INVOLVING THE ENTIRE CMT CREW
Rig-Up Equipment	12/29/2011 20:20							RIGGED UP TO OFFLINE CELLAR AREA / USED BOTH UPRIGHT WATER TANKS
Circulate Well	12/30/2011 04:30							RIG CIRCULATE
Pre-Job Safety Meeting	12/30/2011 08:30							SAFETY MEETING INVOLVING EVERYONE ON LOCATION
Start Job	12/30/2011 08:47							TD 2610 FT TP 2555 FT SHOE 48 FT PIPE 9 5/8 INCH J-55 36# OH 14 3/4 INCH WELL FLUID WEIGHT 9.0 LB/GAL
Other	12/30/2011 08:48		2	2			39.0	FILL LINES

Activity Description	Date/Time	Cht #	Rate bbl/min	Volume bbl		Pressure psig		Comments
				Stage	Total	Tubing	Casing	
Pressure Test	12/30/2011 08:51		0.5			3500.0		PRESSURE TEST GOOD
Pump Spacer 1	12/30/2011 08:56		4	20			79.0	FRESH WATER SPACER
Pump Gel - Start	12/30/2011 09:01		4	20			58.0	PUMP GEL SPACER
Other	12/30/2011 09:06		4	20			58.0	PUMP FRESH WATER SPACER #2
Pump Lead Cement	12/30/2011 09:18		6	444			154.0	PUMP 1070 SKS OF LEAD CEMENT @ 12.3 LB/GAL 2.33 YIELD 12.62 GAL/SKS
Pump Tail Cement	12/30/2011 10:56		6	63			169.0	PUMP 170SKS OF TAIL CEMENT @ 12.8 LB/GAL 2.07 YIELD 10.67 GAL/SKS
Shutdown	12/30/2011 11:08							SHUT DOWN / DROP PLUG
Drop Top Plug	12/30/2011 11:09							PLUG LEFT THE PLUG CONTAINER
Pump Displacement	12/30/2011 11:09		6	193.8			285.0	PUMP FRESH WATER DISPLACEMENT
Slow Rate	12/30/2011 11:39		2	183			110.0	SLOW RATE LAST 10BBL TO 2 BBL/MIN
Bump Plug	12/30/2011 11:44		2	193.8			648.0	PLUG LANDED AT 160 PSI
Check Floats	12/30/2011 11:50							FLOATS HELD / GOT 1 BBL BACK TO TANKS / HAD NOT RETURNS THRU OUT THE JOB / NO CEMENT TO SURFACE
Pressure Up	12/30/2011 11:53		1			1500.0		PRESSURE UP CSG / HOLD FOR 30 MIN
Check Floats	12/30/2011 12:20							CHECK FLOATS / GOOD
Other	12/30/2011 12:27		1	10			114.0	PUMP SUGAR WATER THRU PARISITE/ CLEAN
Shutdown	12/30/2011 12:36							SHUT DOWN / SET UP FOR PUMP CLEAN UP
End Job	12/30/2011 12:38							END JOB FOR SURFACE / SET UP FOR PUMPING TOP OUT CEMENT
Activity Description	Date/Time	Cht #	Rate bbl/min	Volume bbl		Pressure psig		Comments
				Stage	Total	Tubing	Casing	

Safety Meeting - Pre Rig-Down	12/30/2011 12:40							ALL HES PRESENT / RIG DOWN SAFETY MEET AND SAFETY MEET FOR TOP OUT RIG UP
Other	12/30/2011 13:00							CREW REMAINED ON LOCATION
Start Job	12/30/2011 14:21							READY FOR TOP OUT #1
Other	12/30/2011 14:26		1	1			-5.0	PRIME LINES WITH FRESH WATER
Pump Cement	12/30/2011 14:28		3	50			97.0	PUMP 142.5 SKS TOP OUT CEMENT AT 12.5 PPG 1.97 Y 10.96 GAL/SKS
Shutdown	12/30/2011 14:48							SHUT DOWN / HESITATE
Pump Cement	12/30/2011 14:56		3	10			97.0	PUMP TOP OUT CEMENT
Shutdown	12/30/2011 14:59							SHUT DOWN/ WOC
Start Job	12/30/2011 16:14							START TOP OUT #2
Other	12/30/2011 16:15		1	1			1.0	PRIME LINES WITH FRESH WATER
Pump Cement	12/30/2011 16:16		2.8	55			97.0	PUMP TOP OUT CEMENT 142 SKS AT 12.5 PPG 1.97 Y 10.96 GAL/SKS
Other	12/30/2011 16:39		2.8	1			93.0	PUMP H2O BEHIND
Shutdown	12/30/2011 16:40							SHUT DOWN/WOC
End Job	12/30/2011 16:41							NO CEMENT TO SURFACE
Start Job	12/30/2011 18:31							START TOP OUT #3
Other	12/30/2011 18:42		2.8	1			5.0	PRIME LINES
Pump Cement	12/30/2011 18:43		2.8	50			96.0	PUMP 142 SKS TOP OUT CEMENT AT 12.5 PPG 1.97 10.96 GAL/SKS
Other	12/30/2011 19:02		2.8	1			93.0	PUMP H2O BEHIND
Shutdown	12/30/2011 19:02							SHUT DOWN / WOC
End Job	12/30/2011 19:04							NO CEMENT TO SURFACE
Start Job	12/30/2011 20:46							START TOP OUT #4

Activity Description	Date/Time	Cht #	Rate bbl/min	Volume bbl		Pressure psig		Comments
				Stage	Total	Tubing	Casing	
Other	12/30/2011 20:46		2.8	1			38.0	PRIME LINES
Pump Cement	12/30/2011 20:47		2.8	50			99.0	PUMP TOP OUT CEMENT AT 12.5 PPG 1.97 Y 10.96 GAL/SKS
Other	12/30/2011 21:06		2.8	1			99.0	PUMP H2O BEHIND
Shutdown	12/30/2011 21:06							SHUT DOWN/WOC
End Job	12/30/2011 21:07							NO CEMENT TO SURFACE
Start Job	12/30/2011 22:32							START TOP OUT #5
Other	12/30/2011 22:32		2.8	1			34.0	PRIME LINES WITH FRESH WATER
Pump Cement	12/30/2011 22:33		2.8	30			96.0	PUMP 85 SKS TOPOUT CEMENT AT 12.5 PPG 1.97 Y 10.96 GAL/SKS
Shutdown	12/30/2011 22:44							SHUT DOWN / WOC
Other	12/30/2011 22:44		2.8	1			93.0	PUMP H2O BEHIND
End Job	12/30/2011 22:44							NO CEMENT TO SURFACE
Start Job	12/31/2011 00:26							START TOP OUT JOB #6
Other	12/31/2011 00:27		2.8	1			65.0	PRIME LINES WITH FRESH WATER
Pump Cement	12/31/2011 00:27		2.8	52			106.0	PUMP 148 SKS TOP OUT CEMENT AT 12.5PPG AND BROUGHT UP WT TO 13.0 PPG
Other	12/31/2011 00:46		2.8	1			105.0	PUMP H2O BEHIND
Shutdown	12/31/2011 00:46							SHUT DOWN / WASH UP PUMP AND LINES / WOC
End Job	12/31/2011 00:47							NO CEMENT TO SURFACE
Start Job	12/31/2011 03:30							START TOP OUT #7
Other	12/31/2011 03:30		2.8	1			65.0	PRIME LINES WITH FRESH WATER
Activity Description	Date/Time	Cht #	Rate bbl/min	Volume bbl		Pressure psig		Comments
				Stage	Total	Tubing	Casing	

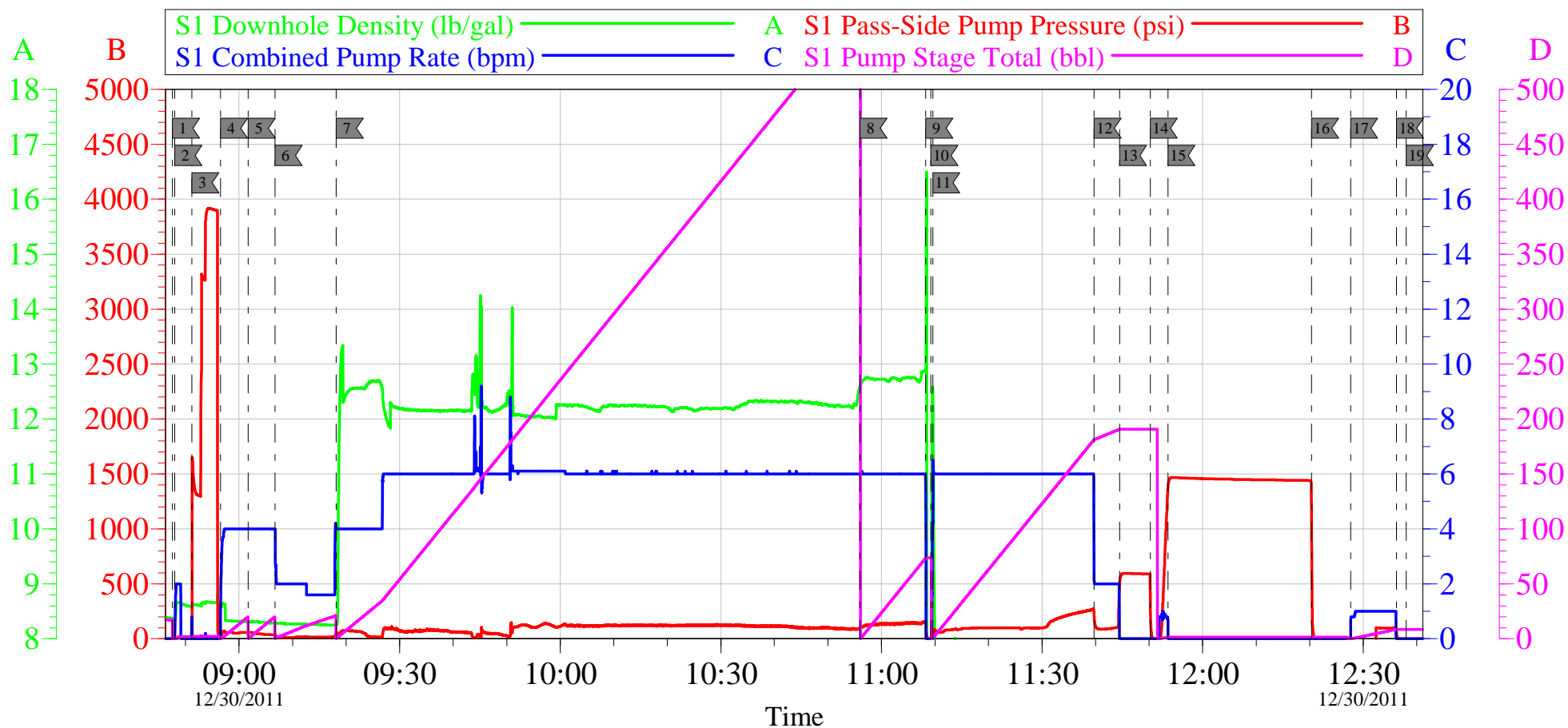
Pump Cement	12/31/2011 03:31		2.8	31.5			110.0	PUMP 90 SKS TOP OUT CEMENT AT 12.5 PPG 1.97 Y 10.96 GAL/SKS / BRING WT UPTO 13.0 PPG
Other	12/31/2011 03:42		2.8	1			103.0	PUMP FRESH WATER BEHIND
Shutdown	12/31/2011 03:43							SHUT DOWN / WASH UP /WOC
End Job	12/31/2011 03:43							NO CEMENT TO SURFACE
Start Job	12/31/2011 05:52							START TOP OUT #8
Other	12/31/2011 05:52		2.8	1			65.0	PRIME LINES WITH FRESH WATER
Pump Cement	12/31/2011 05:53		2.8	30			99.0	PUMP 85.5 SKS TOP OUT CEMENT AT 13.3 PPG 1.97 Y 10.96 GAL/SKS
Other	12/31/2011 06:04		2.8	1			93.0	PUMP WATER BEHIND
Shutdown	12/31/2011 06:04							SHUT DOWN / WASH UP PUMP /WOC
End Job	12/31/2011 06:05							NO CEMENT TO SURFACE
Start Job	12/31/2011 07:56							START TOP OUT #9
Other	12/31/2011 07:57		2.8	1			67.0	PRIME LINES WITH FRESH WATER
Pump Cement	12/31/2011 07:58		2.8	21.1			93.0	PUMP 60.1 SKS TOP OUT CEMENT AT 13.3 PPG 1.97 Y 10.96 GAL/SKS / GOT CEMENT TO SURFACE / HESITAE PUMPING LAST 7 BBLs
Shutdown	12/31/2011 08:14							SHUT DOWN / WASH UP PUMP AND BLOW DOWN / WOC
End Job	12/31/2011 08:15							CEMENT TO SURFACE / WOC TO SEE IF IT FALLS BACK.
Start Job	12/31/2011 11:22							START TOP OUT JOB #10
Other	12/31/2011 11:23		2.8	1			67.0	PRIME LINES WITH FRESH WATER
Pump Cement	12/31/2011 11:23		2.8	10			97.0	PUMP 28.5 SKS TOP CEMENT AT 12.5 PPG 1.97 Y 10.96 GAL/SKS / GOT CEMENT TO SURFACE AT 3 BBLs GONE

Cementing Job Log

Activity Description	Date/Time	Cht #	Rate bbl/ min	Volume bbl		Pressure psig		Comments
				Stage	Total	Tubing	Casing	
Shutdown	12/31/2011 11:27							SHUT DOWN AND HESITATED 3 TIMES / CEMENT TO SURFACE
End Job	12/31/2011 11:28							BLOW DOWN EQUIPMENT AND WASH UP
Pre-Rig Down Safety Meeting	12/31/2011 11:30							ALL HES PRESENT
Rig-Down Equipment	12/31/2011 11:35							
Safety Meeting - Departing Location	12/31/2011 12:25							ALL HES PRESENT
Comment	12/31/2011 12:30							THANK YOU USING HALLIBURTON AND THE CREW OF CRAIG KUKUS

OXY CC 697-05-63B

HP 330 SURFACE 9 5/8



Local Event Log

1 START JOB	08:47:34	2 PRIME LINES	08:48:00	3 PRESSURE TEST	08:51:10
4 PUMP H2O SPACER	08:56:32	5 PUMP GEL SPACER	09:01:42	6 PUMP H2O SPACER	09:06:44
7 PUMP LEAD CEMENT	09:18:08	8 PUMP TAIL CEMENT	10:56:00	9 SHUT DOWN	11:08:17
10 DROP PLUG	11:09:13	11 PUMP DISPLACEMENT	11:09:34	12 SLOW RATE	11:39:43
13 BUMP PLUG	11:44:29	14 CHECK FLOATS	11:50:13	15 PRESSURE UP CSG/HOLD 30 MIN	11:53:31
16 CHECK FLOATS	12:20:20	17 PUMP SUGAR WATER/PARISITE	12:27:38	18 SHUT DOWN	12:36:12
19 END JOB	12:38:02				

Customer: **OXY**
 Well Description: **CC 697-05-63B**
 Company Rep: **JEF FGILL**

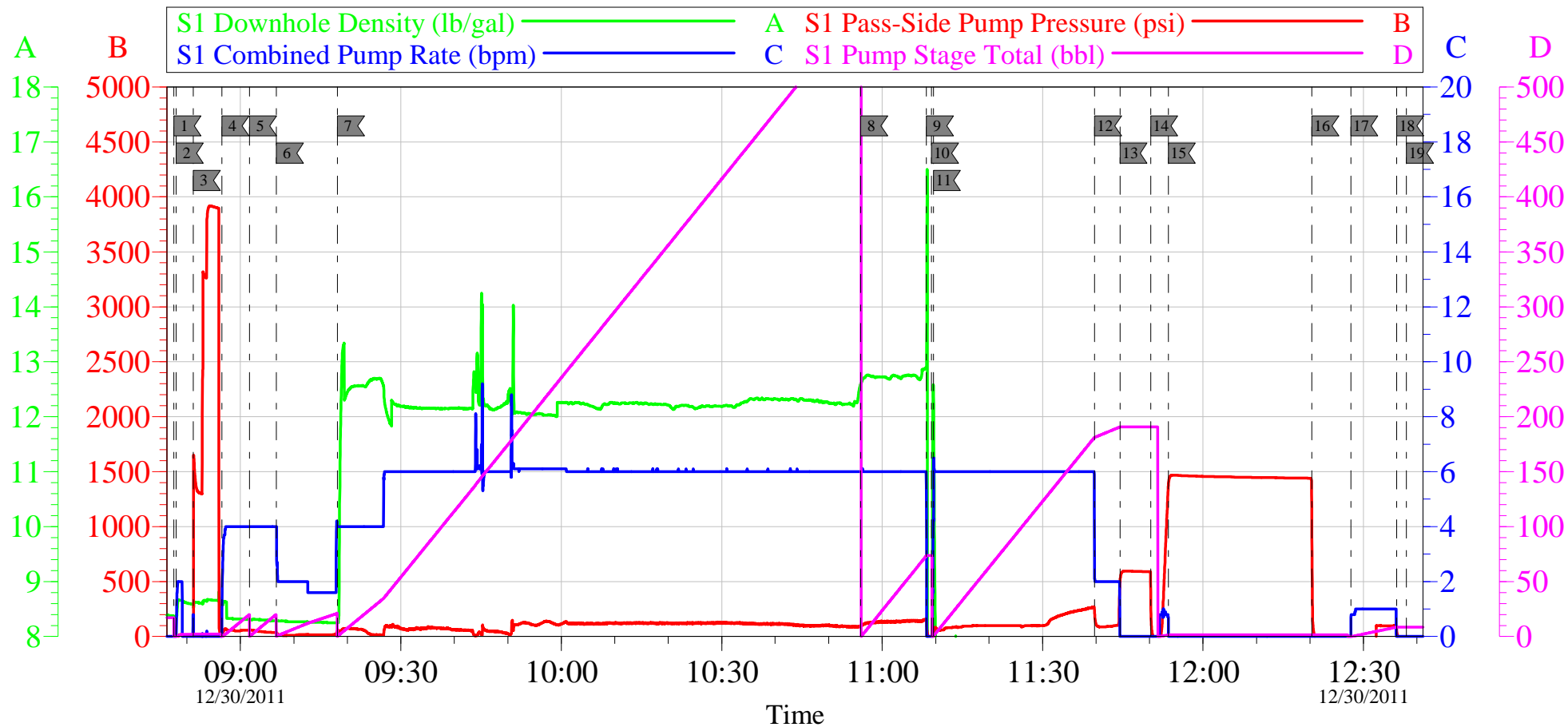
Job Date: **30-Dec-2011**
 Job Type: **SURFACE**
 Cement Supervisor: **CRAIG KUKUS**

Sales Order #: **9170149**
 ADC Used: **YES**
 Elite #/Operator: **E 7 BRENDAN BURKE**

OptiCem v6.4.8
 30-Dec-11 12:56

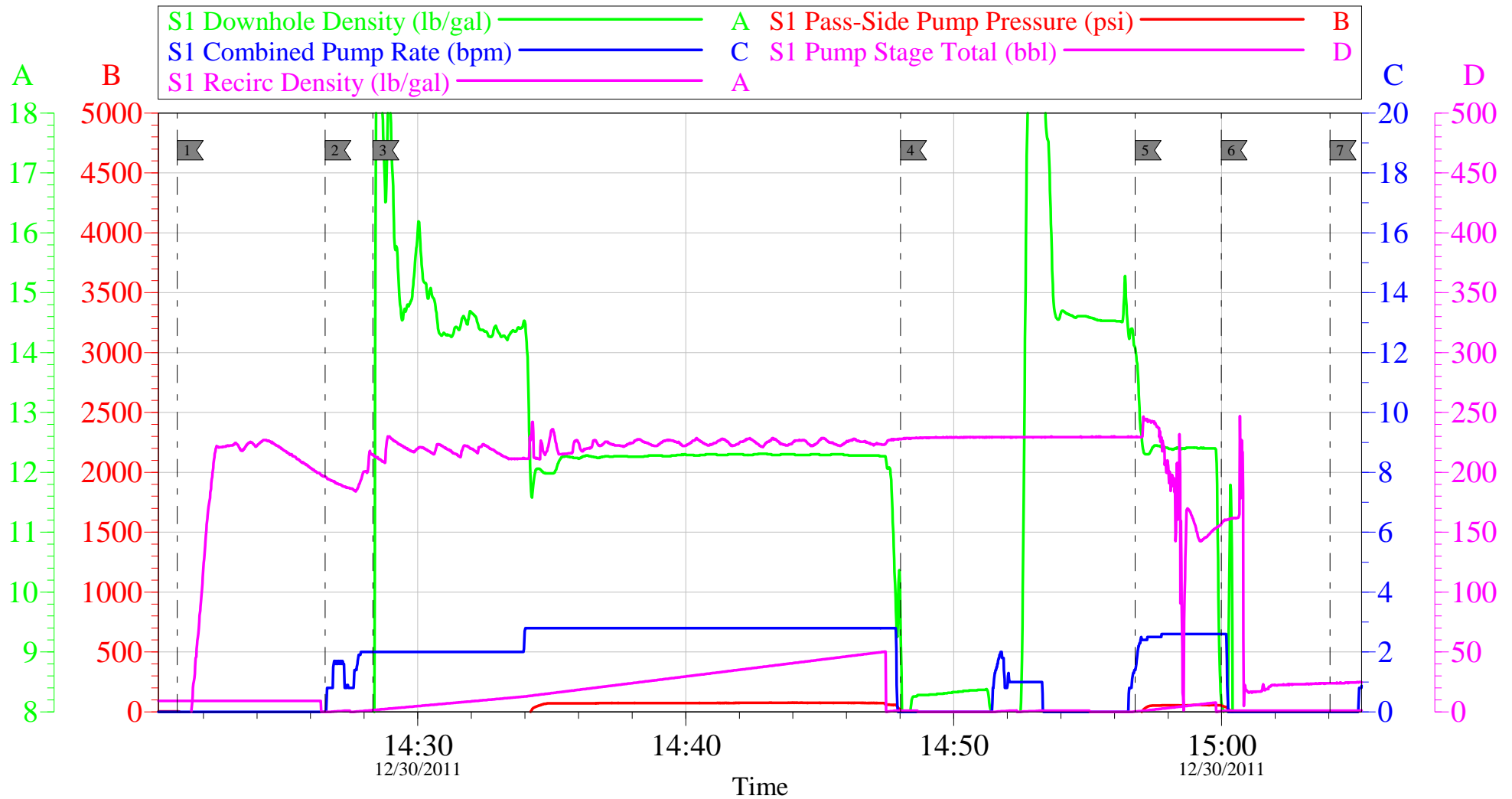
OXY CC 697-05-63B

HP 330 SURFACE 9 5/8



OXY CC 697-05-63B

TOP OUT #1 HP 330

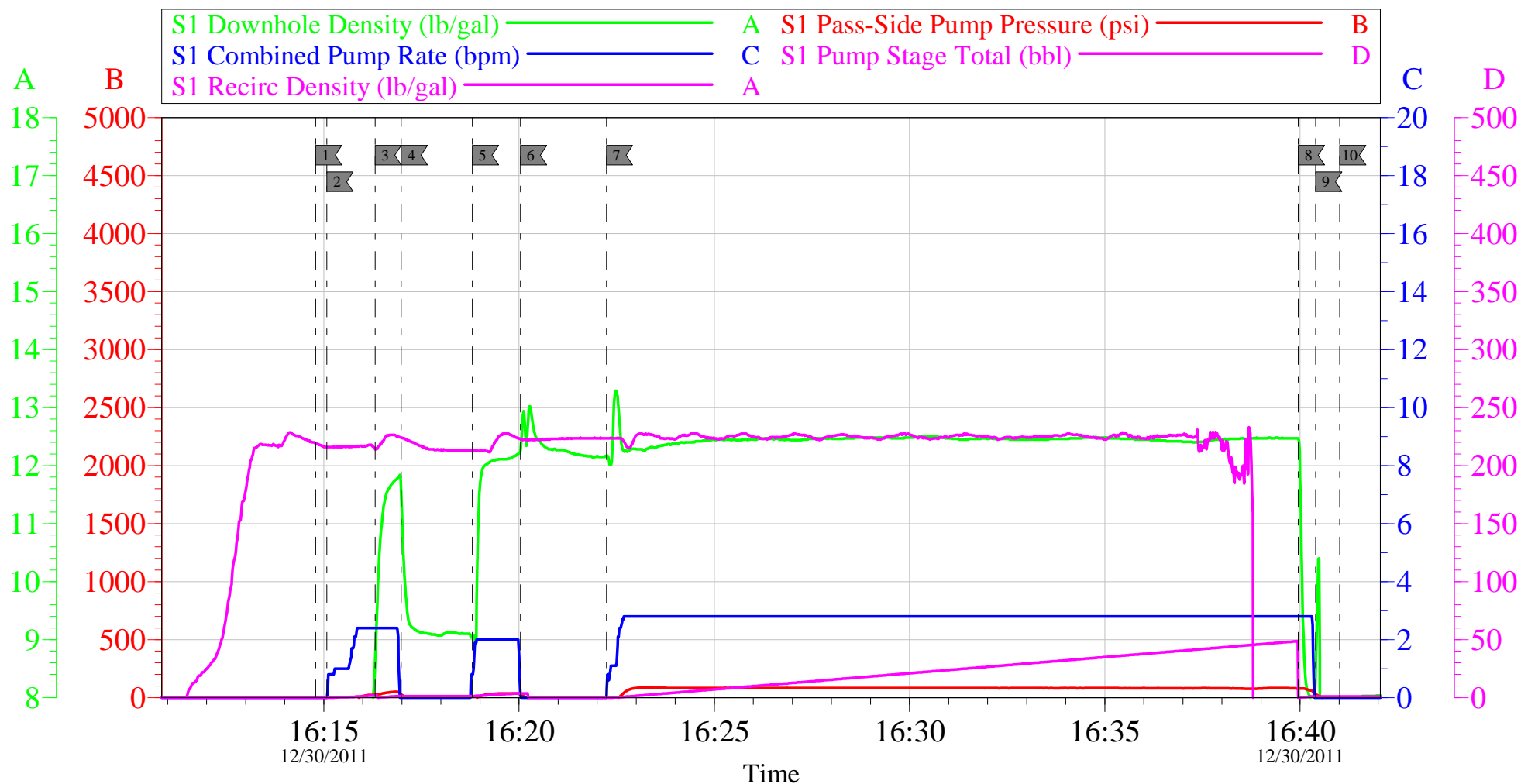


Local Event Log					
1	START JOB	14:21:02	2	PRIME LINES	14:26:32
			3	PUMP TOP OUT CEMENT	14:28:20
4	SHUT DOWN	14:48:01	5	PUMP TOP OUT CEMENT	14:56:46
			6	SHUT DOWN	14:59:59
7	END JOB	15:04:03			

Customer: OXY	Job Date: 30-Dec-2011	Sales Order #: 9107149
Well Description: CC 697-05-63B	Job Type: TOP OUT #1	ADC Used: YES
Company Rep: JEFF GILL	Cement Supervisor: CRAIG KUKUS	Elite #/Operator: E 7 BRENDAN BURKE

OXY CC 697-05-63B

HP 330 TOP OUT #2



Local Event Log

1 START JOB	16:14:47	2 PRIME LINES	16:15:05	3 PUMP TOP OUT CEMENT	16:16:19
4 SHUT DOWN	16:16:59	5 PUMP TOP OUT CEMENT	16:18:48	6 SHUT DOWN	16:20:02
7 PUMP TOP OUT CEMENT	16:22:14	8 PUMP H2O BEHIND	16:39:58	9 SHUT DOWN/WOC	16:40:24
10 END JOB #2	16:41:01				

Customer: OXY
Well Description: CC 697-05-63B
Company Rep: JEFF GILL

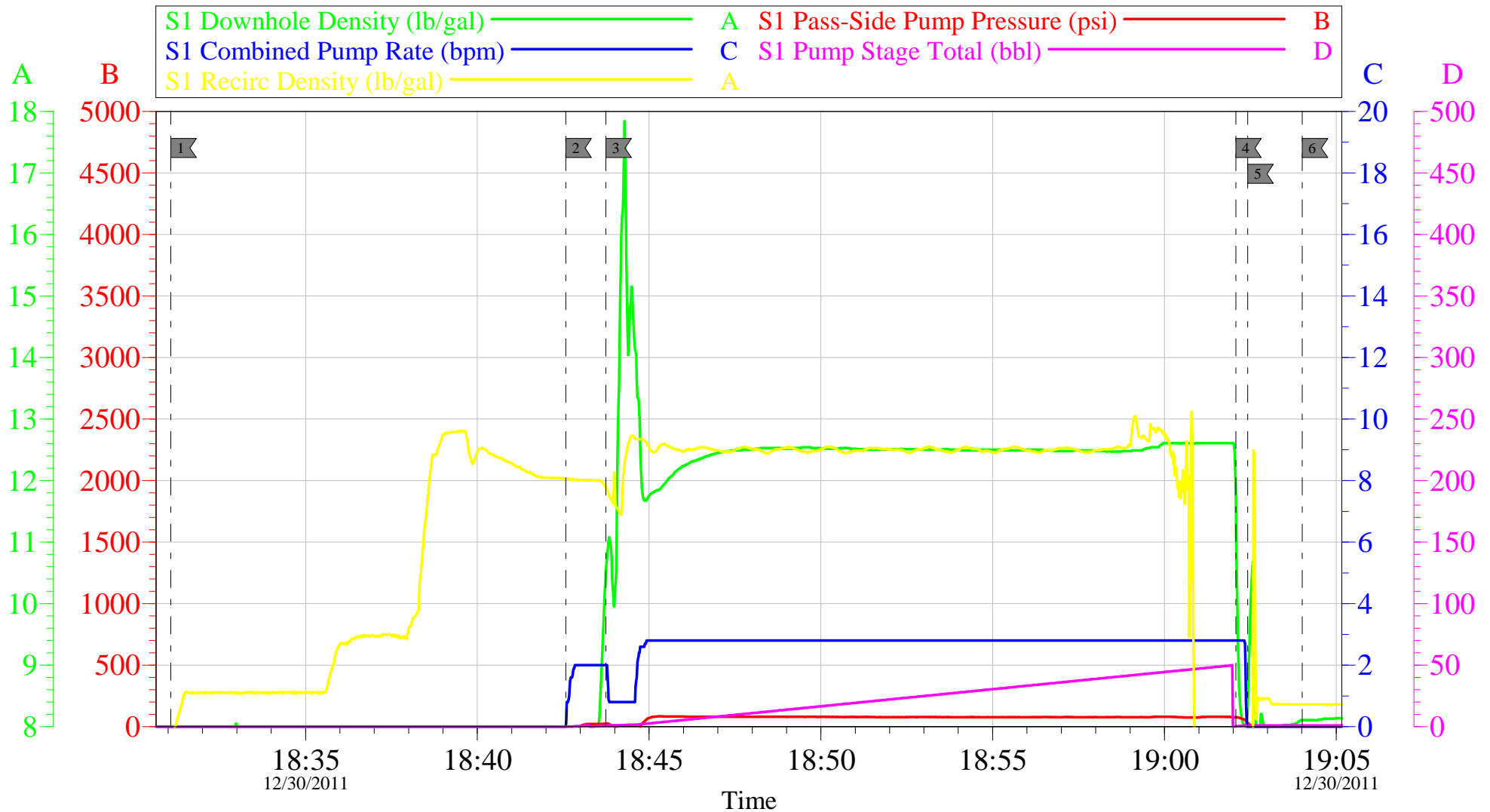
Job Date: 30-Dec-2011
Job Type: TOP OUT #2
Cement Supervisor: CRAIG KUKUS

Sales Order #: 9107149
ADC Used: YES
Elite #/Operator: E 7 BRENDAN BURKE

OptiCem v6.4.8
30-Dec-11 16:48

OXY CC 697-05-63B

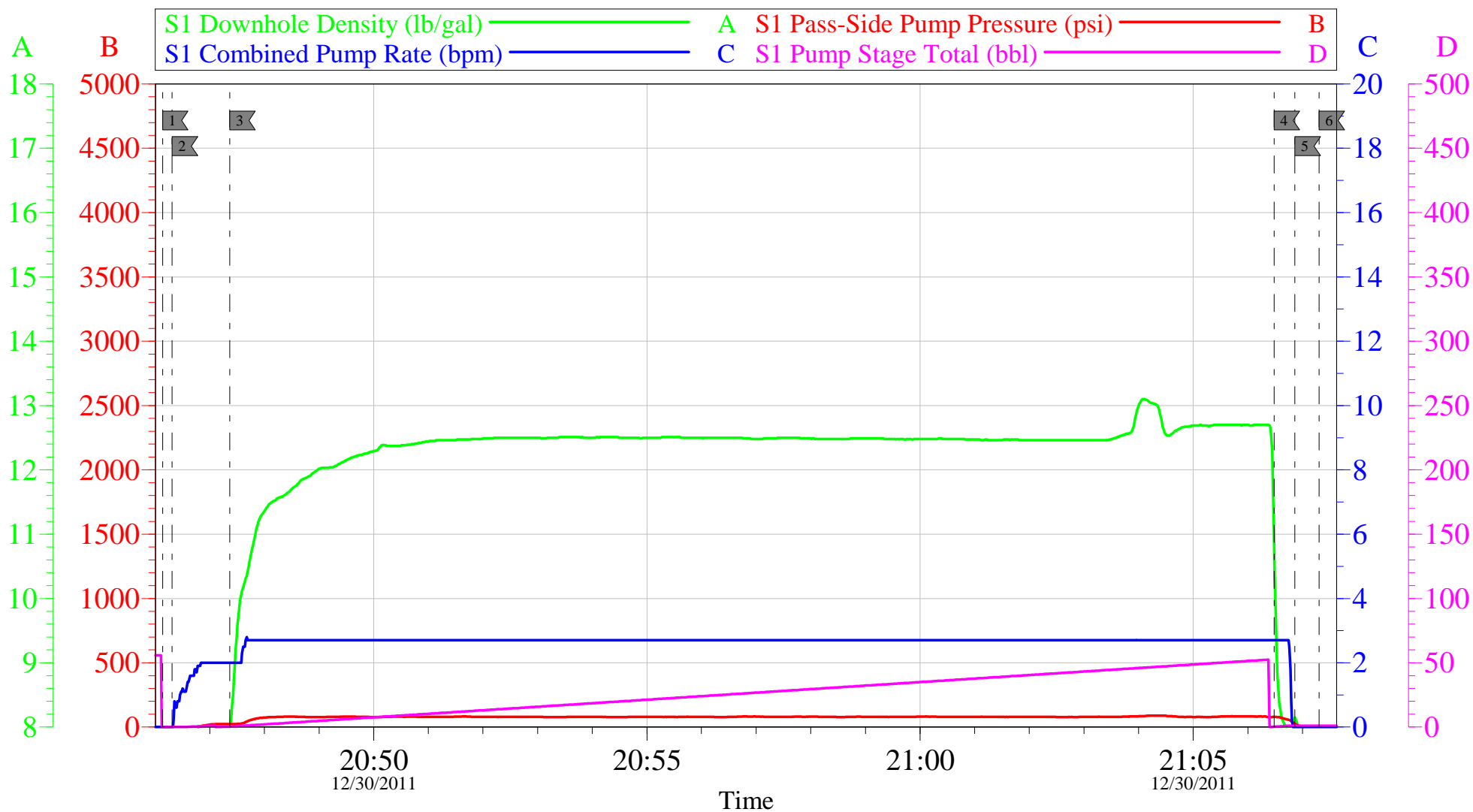
HP TOP OUT #3



Customer: OXY	Job Date: 30-Dec-2011	Sales Order #: 9107149
Well Description: CC 697-05-63B	Job Type: TOP OUT #3	ADC Used: YES
Company Rep: JEFF GILL	Cement Supervisor: CRAIG KUKUS	Elite #/Operator: E 7 BRENDAN BURKE

OXY CC 697-05-63B

HP 330 TOP OUT #4



Local Event Log

1 START JOB	20:46:08	2 PRIME LINES	20:46:19	3 PUMP TOP OUT CEMENT	20:47:22
4 PUMP H2O BEHIND	21:06:29	5 SHUT DOWN/WOC	21:06:52	6 END JOB	21:07:18

Customer: **OXY**
 Well Description: **CC 697-05-63B**
 Company Rep: **JEFF GILL**

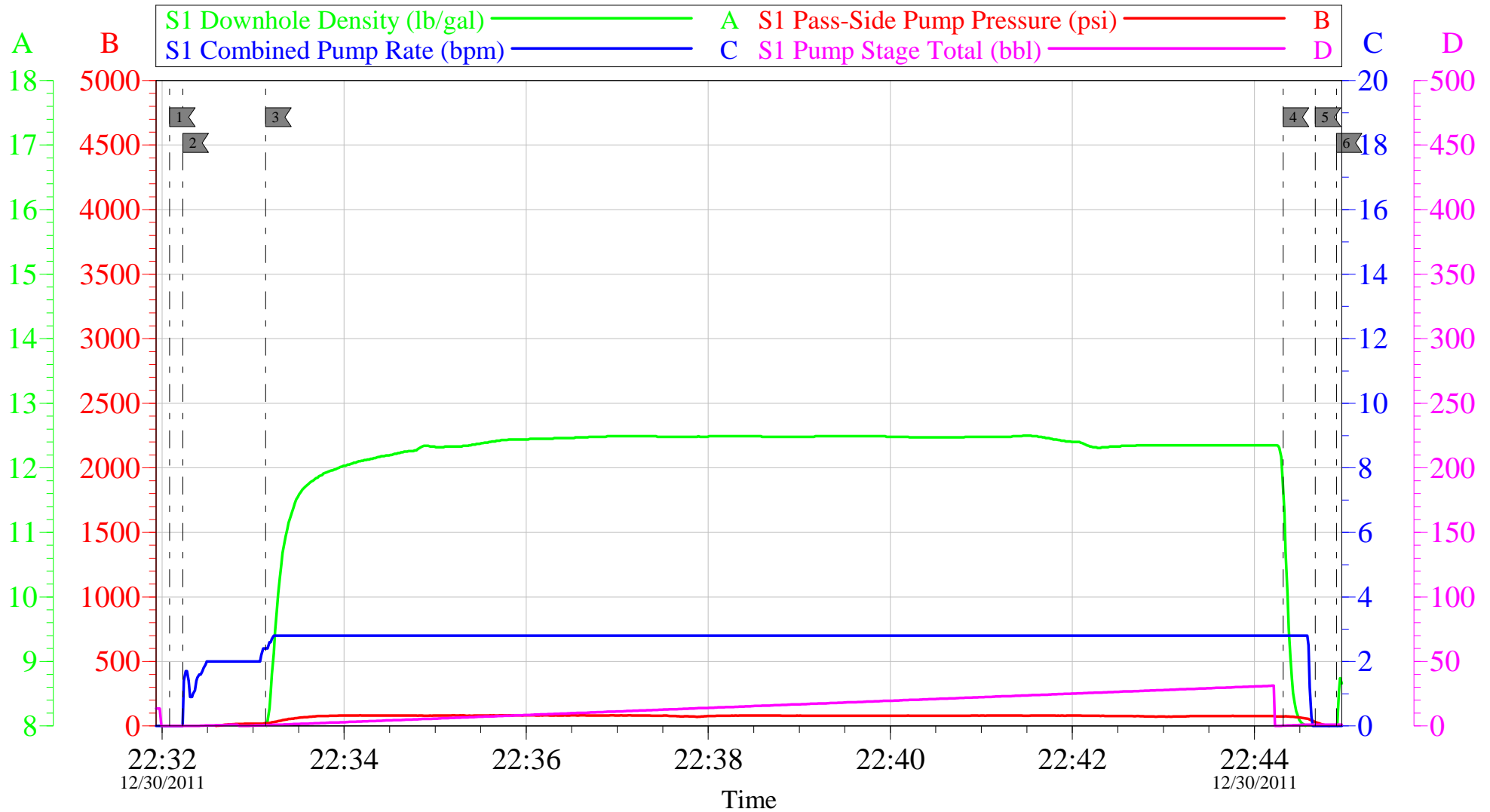
Job Date: **30-Dec-2011**
 Job Type: **TOP OUT #4**
 Cement Supervisor: **CRAIG KUKUS**

Sales Order #: **9107149**
 ADC Used: **YES**
 Elite #/Operator: **E 7 BRENDAN BURKE**

OptiCem v6.4.8
 30-Dec-11 21:12

OXY CC 697-05-63B

HP 330 TOP OUT #5



Local Event Log

1 START JOB	22:32:05	2 PRIME LINES	22:32:14	3 PUMP TOP OUT CEMENT	22:33:08
4 PUMP H2O BEHIND	22:44:19	5 SHUT DOWN/WOC	22:44:40	6 END JOB	22:44:54

Customer: **OXY**
 Well Description: **CC 697-05-63B**
 Company Rep: **JEFF GILL**

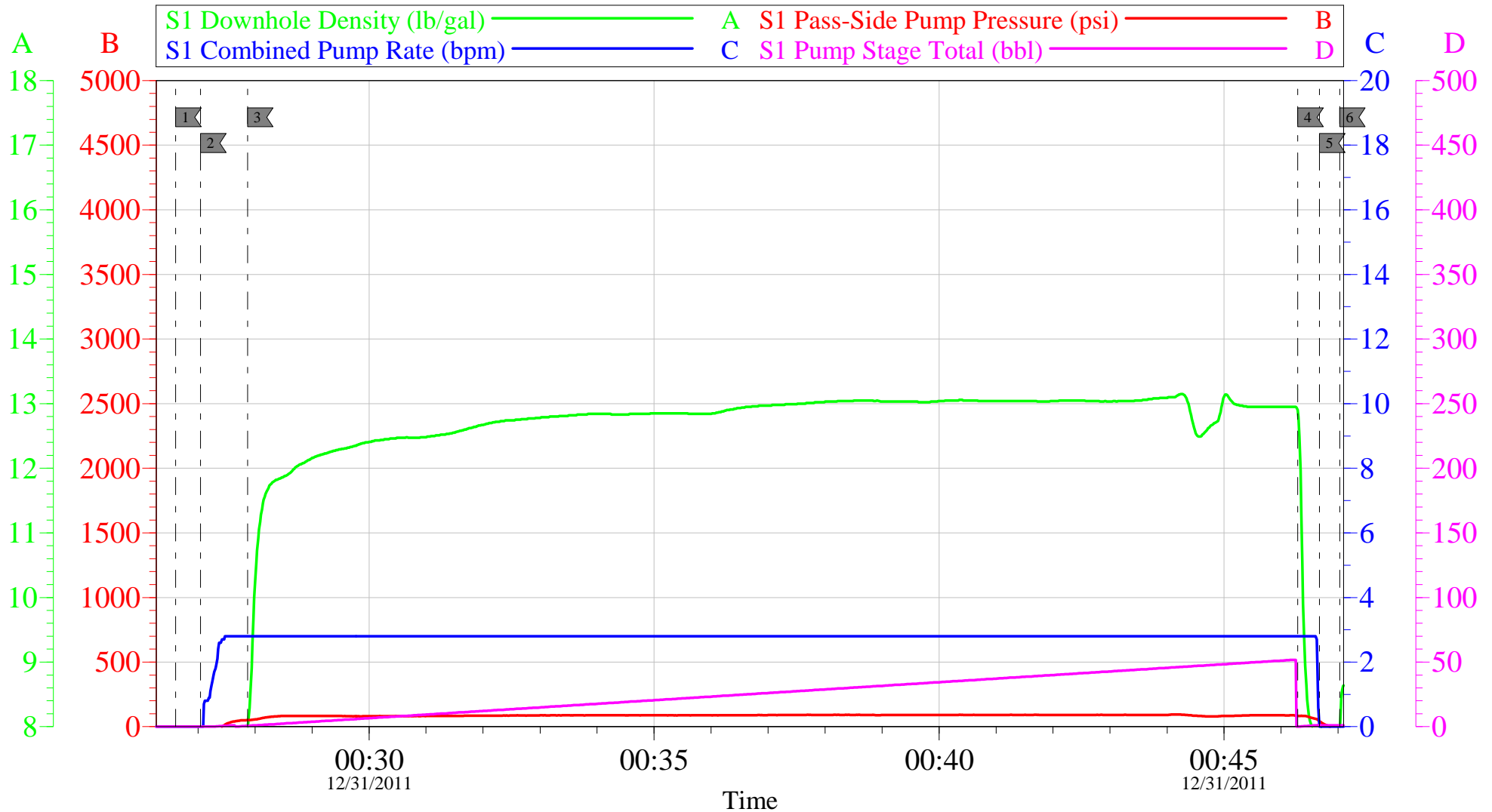
Job Date: **30-Dec-2011**
 Job Type: **TOP OUT #5**
 Cement Supervisor: **CRAIG KUKUS**

Sales Order #: **9107149**
 ADC Used: **YES**
 Elite #/Operator: **E 7 BRENDAN BURKE**

OptiCem v6.4.8
 30-Dec-11 22:59

OXY CC 697-05-63B

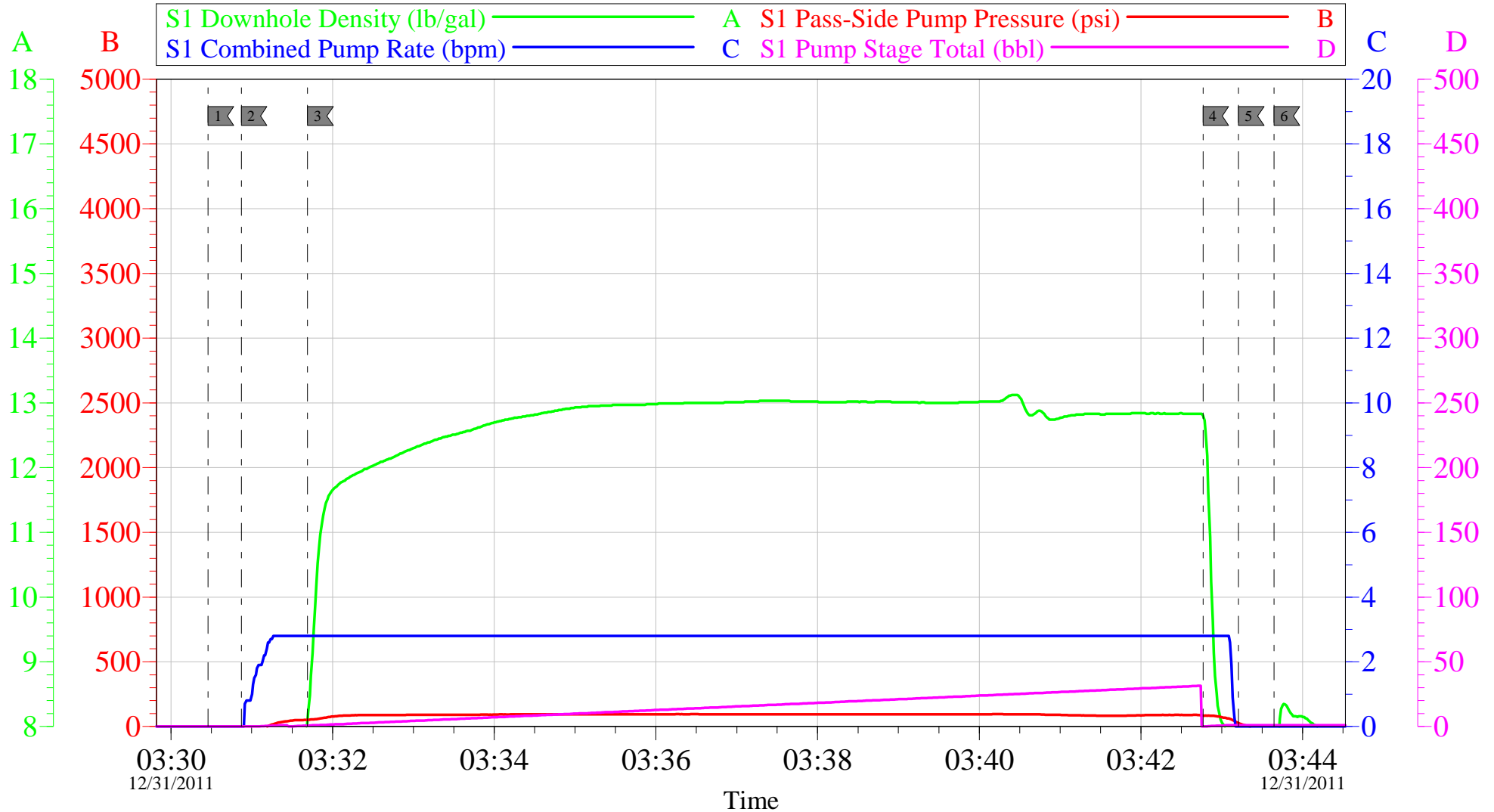
HP 330 TOP OUT #6



Customer: OXY	Job Date: 31-Dec-2011	Sales Order #: 9107149
Well Description: CC 697-05-63B	Job Type: TOP OUT #6	ADC Used: YES
Company Rep: JEFF GILL	Cement Supervisor: CRAIG KUKUS	Elite #/Operator: E7 BRENDAN BURKE

OXY CC 697-05-63B

HP 330 TOP OUT #7



Local Event Log

1 START JOB	03:30:28	2 PRIME LINES	03:30:52	3 PUMP TOP OUT CEMENT	03:31:41
4 PUMP H2O BEHIND	03:42:46	5 SHUT DOWN / WOC	03:43:12	6 END JOB	03:43:39

Customer: **OXY**
 Well Description: **CC 697-05-63B**
 Company Rep: **JEFF GILLS**

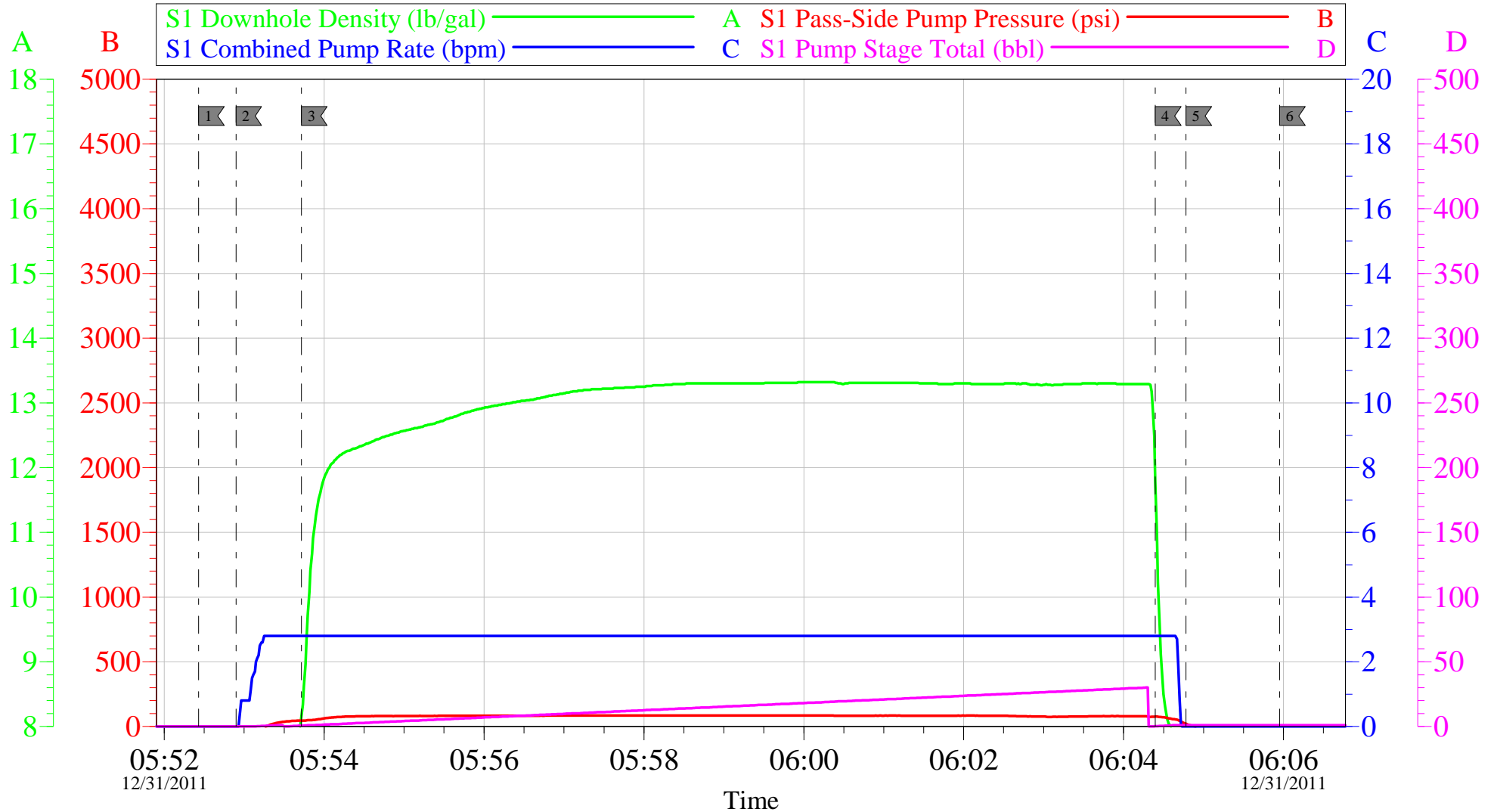
Job Date: **31-Dec-2011**
 Job Type: **TOP OUT #7**
 Cement Supervisor: **CRAIG KUKUS**

Sales Order #: **9107149**
 ADC Used: **YES**
 Elite #/Operator: **E 7 BRENDAN BURKE**

OptiCem v6.4.8
 31-Dec-11 04:07

OXY CC 697-05-63B

HP 333 TOP OUT #8



Local Event Log

1 START JOB	05:52:26	2 PRIME LINES	05:52:54	3 PUMP TOP OUT CEMENT	05:53:43
4 PUMP H2O BEHIND	06:04:24	5 SHUT DOWN / WOC	06:04:47	6 END JOB	06:05:57

Customer: **OXY**
 Well Description: **CC 697-05-63B**
 Company Rep: **JEFF GILL**

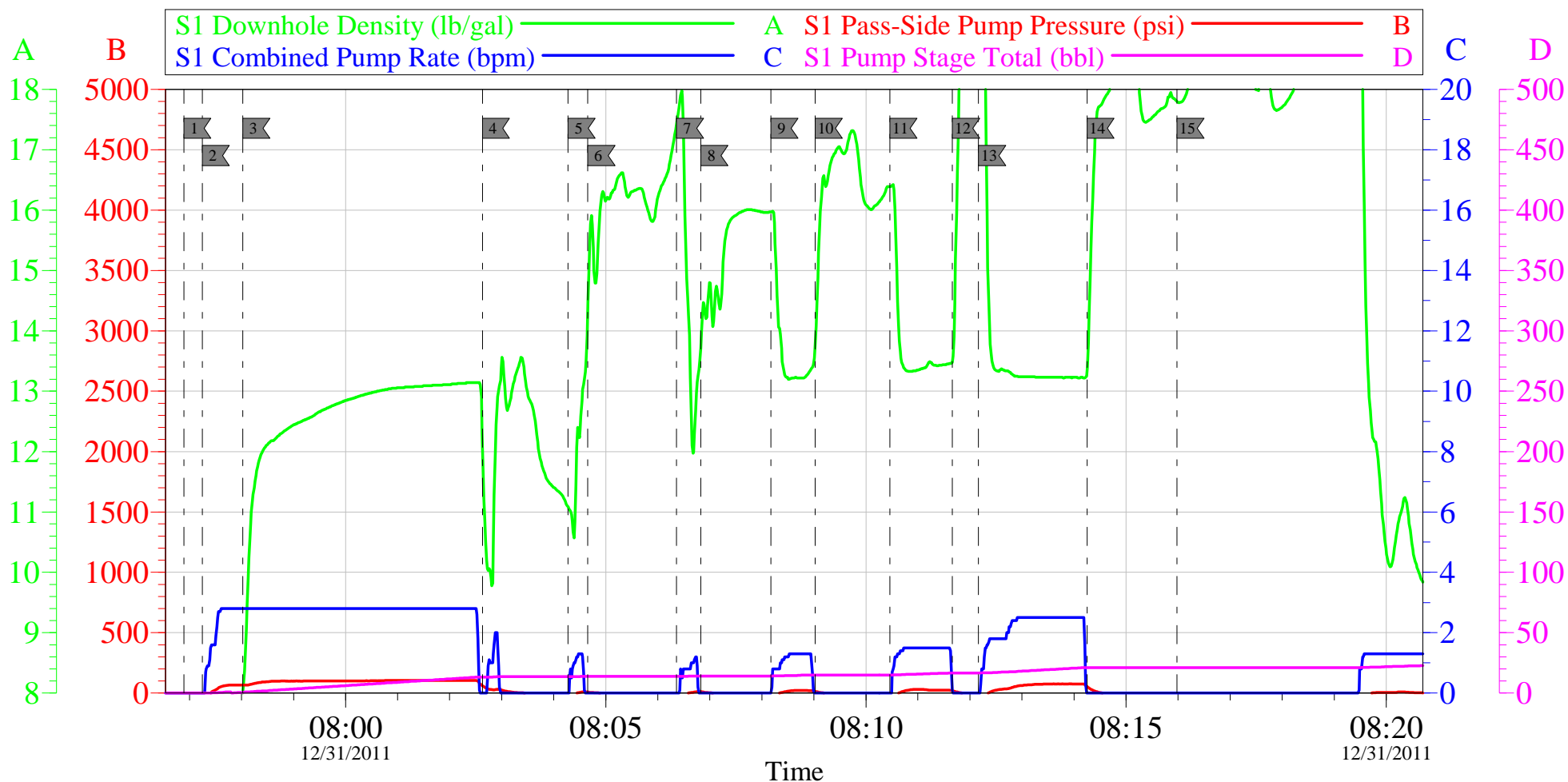
Job Date: **31-Dec-2011**
 Job Type: **TOP OUT #8**
 Cement Supervisor: **CRAIG KUKUS**

Sales Order #: **9107149**
 ADC Used: **YES**
 Elite #/Operator: **E 7 BRENDAN BURKE**

OptiCem v6.4.8
 31-Dec-11 06:23

OXY CC 697-05-63B

HP 330 TOP OUT #9



Local Event Log

1 START JOB	07:56:54	2 PRIME LINES	07:57:15	3 PUMP TOP OUT CEMENT	07:58:01
4 SHUT DOWN /HESITAE	08:02:38	5 PUMP TOP OUT CEMENT	08:04:16	6 SHUT DOWN / HESITAE	08:04:39
7 PUMP TOP OUT CEMENT	08:06:22	8 SHUT DOWN/HESITAE	08:06:50	9 PUMP TOP OUT CEMENT	08:08:10
10 SHUT DOWN/HESITAE	08:09:01	11 PUMP TOP OUT CEMENT	08:10:28	12 SHUT DOWN/HESITAE	08:11:40
13 PUMP TOP OUT CEMENT	08:12:10	14 SHUT DOWN/HESITAE	08:14:15	15 CLEAN UP PUMP/WOC	08:15:59

Customer: OXY
Well Description: CC 697-05-63B
Company Rep: JEFF GILL

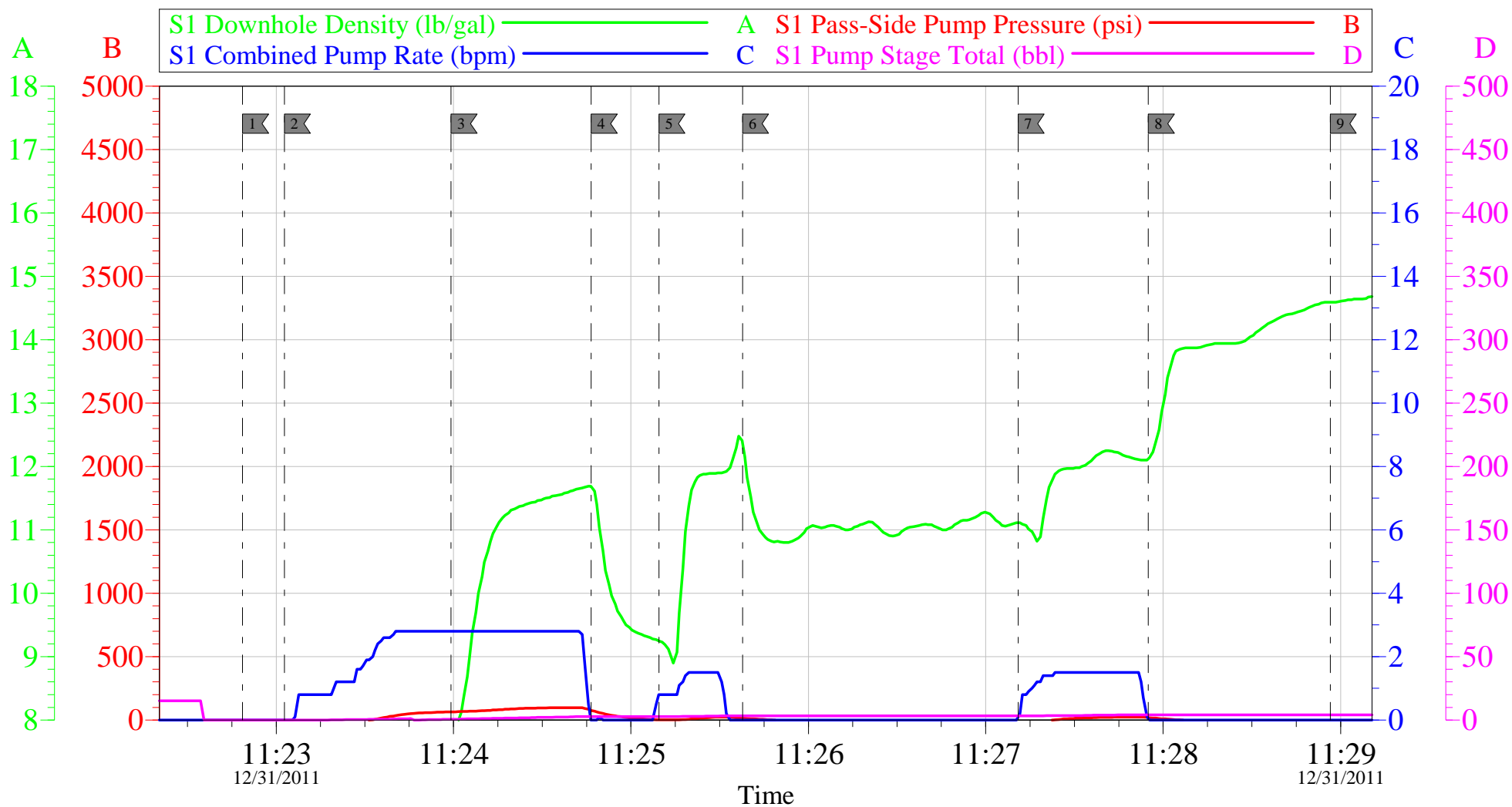
Job Date: 31-Dec-2011
Job Type: TOP OUT #9
Cement Supervisor: CRAIG KUKUS

Sales Order #: 9107149
ADC Used: YES
Elite #/Operator: E 7 BRENDAN BURKE

OptiCem v6.4.8
31-Dec-11 08:43

OXY CC 697-05-63B

HP 330 TOP OUT #10



Local Event Log

1 START JOB	11:22:49	2 PRIME LINES	11:23:03	3 PUMP TOP OUT CEMENT	11:23:59
4 SHUT DOWN/HESITATE	11:24:47	5 PUMP TOP OUT CE,MENT	11:25:09	6 SHUT DOWN / HESITATE	11:25:38
7 PUMP TOP OUT CEMENT	11:27:11	8 SHUT DOWN	11:27:55	9 END JOB	11:28:57

Customer: **OXY**
 Well Description: **CC 697-05-63B**
 Company Rep: **JEFF GILL**

Job Date: **31-Dec-2011**
 Job Type: **TOP OUT #10**
 Cement Supervisor: **CRAIG KUKUS**

Sales Order #: **9107149**
 ADC Used: **YES**
 Elite #/Operator: **E 7 BRENDAN BURKE**

OptiCem v6.4.8
 31-Dec-11 11:56

HALLIBURTON

Water Analysis Report

Company: OXY
Submitted by: CRAIGKUKUS
Attention: _____
Lease: CC
Well #: 697-05-63B

Date: 12/29/2011
Date Rec.: 12/29/2011
S.O.#: 9107149
Job Type: SURFACE

Specific Gravity	<i>MAX</i>	
pH	<i>8</i>	<i>7.5</i>
Potassium (K)	<i>5000</i>	<i>0</i> Mg / L
Calcium (Ca)	<i>500</i>	<i>0</i> Mg / L
Iron (FE2)	<i>300</i>	<i>0</i> Mg / L
Chlorides (Cl)	<i>3000</i>	<i>0</i> Mg / L
Sulfates (SO ₄)	<i>1500</i>	<i>below 200</i> Mg / L
Chlorine (Cl ₂)		<i>425</i> Mg / L
Temp	<i>40-80</i>	<i>62</i> Deg
Total Dissolved Solids		<i>630</i> Mg / L

Respectfully: CRAIGKUKUS

Title: CEMENTING SUPERVISOR

Location: GRANDJUNCTION CO

NOTICE:

This report is limited to the described sample tested. Any person using or relying on this report agrees that Halliburton shall not be liable for any loss or damage whether due to act or omission resulting from such report or its use.

Sales Order #: 9107149	Line Item: 10	Survey Conducted Date: 12/31/2011
Customer: OXY GRAND JUNCTION EBUSINESS		Job Type (BOM): CMT SURFACE CASING BOM
Customer Representative: JEFF GILL		API / UWI: (leave blank if unknown) 05-045-20717
Well Name: CC		Well Number: 697-05-63B
Well Type: Development Well	Well Country: United States of America	
H2S Present:	Well State: Colorado	Well County: Garfield

Dear Customer,

We hope that you were satisfied with the service quality of this job performed by Halliburton. It is the aim of our management and service personnel to deliver equipment and service of a standard unmatched in the service sector of the energy industry.

Please take the time to let us know if our performance met with your satisfaction. Please be as critical as possible to ensure we constantly improve our service. Your comments are of great value to us and are intended for the exclusive use of Halliburton.

CUSTOMER SATISFACTION SURVEY

CATEGORY	CUSTOMER SATISFACTION RESPONSE	
Survey Conducted Date	The date the survey was conducted	12/31/2011
Survey Interviewer	The survey interviewer is the person who initiated the survey.	CRAIG KUKUS (HX19742)
Customer Participation	Did the customer participate in this survey? (Y/N)	Yes
Customer Representative	Enter the Customer representative name	JEFF GILL
HSE	Was our HSE performance satisfactory? Circle Y or N	Yes
Equipment	Were you satisfied with our Equipment? Circle Y or N	Yes
Personnel	Were you satisfied with our people? Circle Y or N	Yes
Customer Comment	Customer's Comment	NONE

CUSTOMER SIGNATURE

Sales Order #: 9107149	Line Item: 10	Survey Conducted Date: 12/31/2011
Customer: OXY GRAND JUNCTION EBUSINESS		Job Type (BOM): CMT SURFACE CASING BOM
Customer Representative: JEFF GILL		API / UWI: (leave blank if unknown) 05-045-20717
Well Name: CC		Well Number: 697-05-63B
Well Type: Development Well	Well Country: United States of America	
H2S Present:	Well State: Colorado	Well County: Garfield

KEY PERFORMANCE INDICATORS

General	
Survey Conducted Date The date the survey was conducted	12/31/2011

Cementing KPI Survey	
Type of Job Select the type of job. (Cementing or Non-Cementing)	0
Select the Maximum Deviation range for this Job What is the highest deviation for the job you just completed? This may not be the maximum well deviation.	Vertical
Total Operating Time (hours) Total Operating Hours Including Rig-up, Pumping, Rig-down. Enter in decimal format.	13
HSE Incident, Accident, Injury HSE Incident, Accident, Injury. This should be recordable incidents only.	No
Was the job purpose achieved? Was the job delivered correctly as per customer agreed design?	Yes
Operating Hours (Pumping Hours) Total number of hours pumping fluid on this job. Enter in decimal format.	11
Customer Non-Productive Rig Time (hrs) Lost time due to Halliburton in the start, execution, or completion of an ordered service or product, or delays in a follow-on service. Enter in decimal format. 0 if none.	0
Type of Rig Classification Job Was Performed Type Of Rig (classification) Job Was Performed On	Drilling Rig (Portable)
Number Of JSAs Performed Number Of Jsas Performed	6
Number of Unplanned Shutdowns Unplanned shutdown is when injection stops for any period of time.	0
Was this a Primary Cement Job (Yes / No)	Yes

Sales Order #: 9107149	Line Item: 10	Survey Conducted Date: 12/31/2011
Customer: OXY GRAND JUNCTION EBUSINESS		Job Type (BOM): CMT SURFACE CASING BOM
Customer Representative: JEFF GILL		API / UWI: (leave blank if unknown) 05-045-20717
Well Name: CC		Well Number: 697-05-63B
Well Type: Development Well	Well Country: United States of America	
H2S Present:	Well State: Colorado	Well County: Garfield

Primary Cement Job= Casing job, Liner job, or Tie-back job.	
Did We Run Wiper Plugs? Did We Run Top And Bottom Casing Wiper Plugs?	Top
Mixing Density of Job Stayed in Designed Density Range (0-100%) Density Range defined as +/- .20 ppg. Calculation: Total BBLs cement mixed at designed density divided by total BBLs of cement multiplied by 100	98
Was Automated Density Control Used? Was Automated Density Control (ADC) Used ?	Yes
Pump Rate (percent) of Job Stayed At Designed Pump Rate Pump Rate range defined as +/- 1bbl/min. Calculation: Total BBLs of fluid pumped at the designed rate divided by Total BBLs of fluid pumped, multiplied by 100	98
Nbr of Remedial Sqz Jobs Rqd - Competition Number Of Remedial Squeeze Jobs Required After Primary Job Performed By Competition	0
Nbr of Remedial Plug Jobs Rqd - HES Number Of Remedial Plug Jobs Needed After Primary Plug Pumped By HES	0
Nbr of Remedial Sqz Jobs Rqd - HES Number Of Remedial Squeeze Jobs Required After Primary Job Performed By HES	0