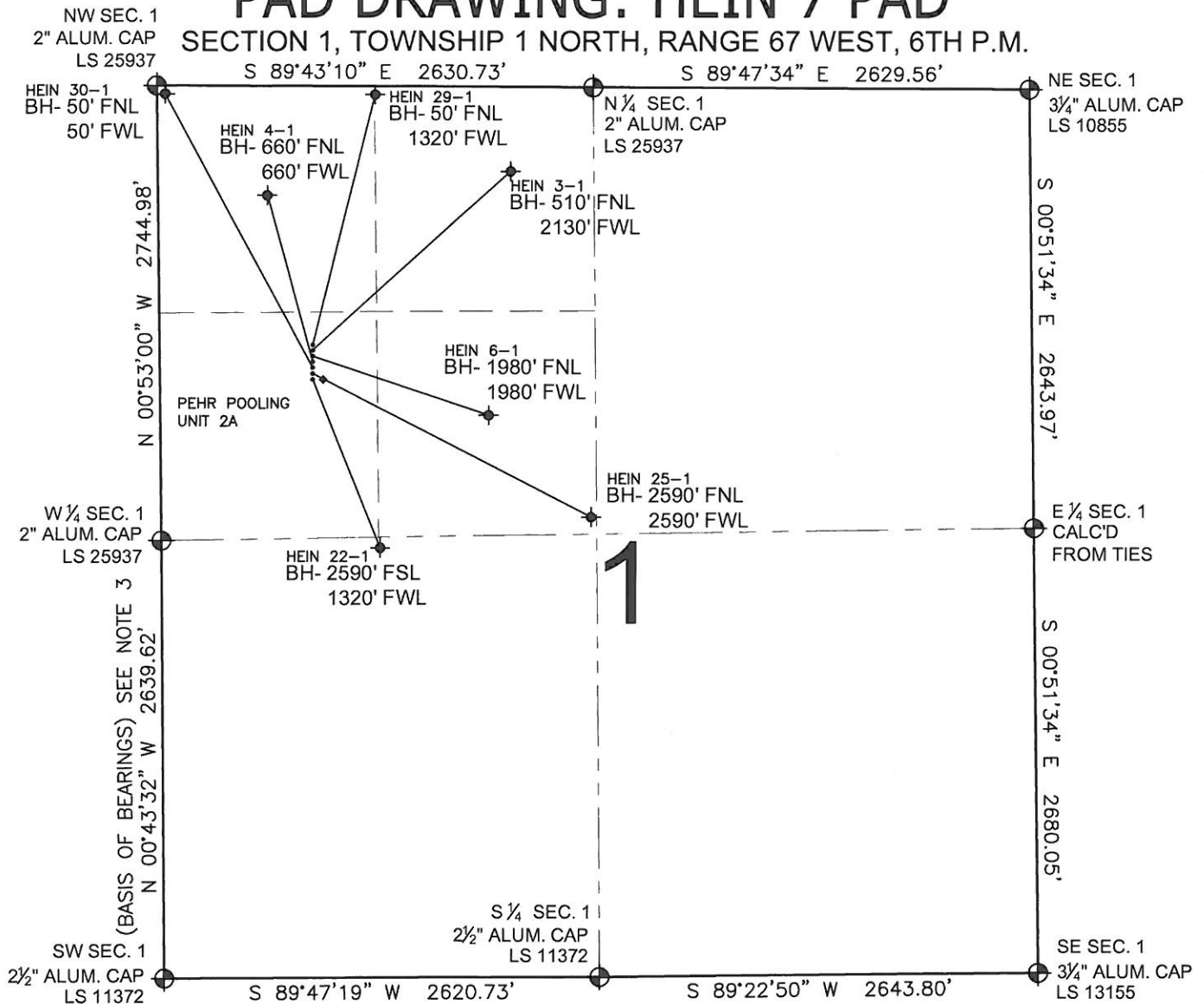


PAD DRAWING: HEIN 7 PAD

SECTION 1, TOWNSHIP 1 NORTH, RANGE 67 WEST, 6TH P.M.



LEGEND

- ⊕ = EXISTING MONUMENT
- ⊙ = PROPOSED WELL
- ⬤ = BOTTOM HOLE
- ⬤ = EXISTING WELL
- BH= BOTTOM HOLE

NOTES:

- THIS FIELD SURVEY CONFORMS TO THE MINIMUM STANDARDS SET BY THE C.O.G.C.C., RULE NO. 215
- HORIZONTAL POSITIONS AND ORTHOMETRIC ELEVATIONS SHOWN AT THE WELL HEAD, ARE BASED ON GPS-RTK POSITIONS DERIVED FROM MINIMUM 2-HOUR STATIC OBSERVATIONS CORRECTED BY THE NATIONAL GEODETIC SURVEY ONLINE POSITIONING USER SERVICE, O.P.U.S. DATUM: HORIZONTAL = NAD83/2007, VERTICAL = NAVD88
- THE BASIS OF BEARINGS ARE STATE PLANE COORDINATE SYSTEM GRID BEARINGS SHOWN HEREON BETWEEN THE DESCRIBED THE MONUMENTS SHOWN HEREON.
- GRID DISTANCES ARE SHOWN, AS MEASURED IN THE FIELD, WITH TIES TO WELLS MEASURED PERPENDICULAR TO SECTION LINES.

NOTES:

HEIN 29-1 TO BE AT 1709' FNL, 938' FWL.
 BOTTOM HOLE AT 50' FNL & 1320' FWL.
 HEIN 3-1 TO BE AT 1719' FNL, 938' FWL.
 BOTTOM HOLE AT 510' FNL & 2130' FWL.
 HEIN 6-1 TO BE AT 1729' FNL, 938' FWL.
 BOTTOM HOLE AT 1980' FNL & 1980' FWL.
 HEIN 4-1 TO BE AT 1739' FNL, 938' FWL.
 BOTTOM HOLE AT 660' FNL & 660' FWL.
 HEIN 30-1 TO BE AT 1749' FNL, 938' FWL.
 BOTTOM HOLE AT 50' FNL & 50' FWL.
 HEIN 25-1 TO BE AT 1759' FNL, 938' FWL.
 BOTTOM HOLE AT 2590' FNL & 2590' FWL.
 HEIN 22-1 TO BE AT 1769' FNL, 938' FWL.
 BOTTOM HOLE AT 2590' FNL & 1320' FWL.
 PEHR POOLING UNIT 2A IS AT 1769' FNL & 985' FWL.

PREPARED BY:

PFS

Petroleum Field Services, LLC
 1801 W. 13th Ave.
 Denver, CO 80204



KERR-MCGEE OIL & GAS ONSHORE LP

FIELD DATE: 01-04-12	PAD NAME: HEIN 7 PAD
DRAWING DATE: 01-12-12	SURFACE LOCATION: WELD COUNTY, COLORADO
BY: SMF	SW 1/4 NW 1/4, SEC. 1, T1N, R67W, 6TH P.M.

