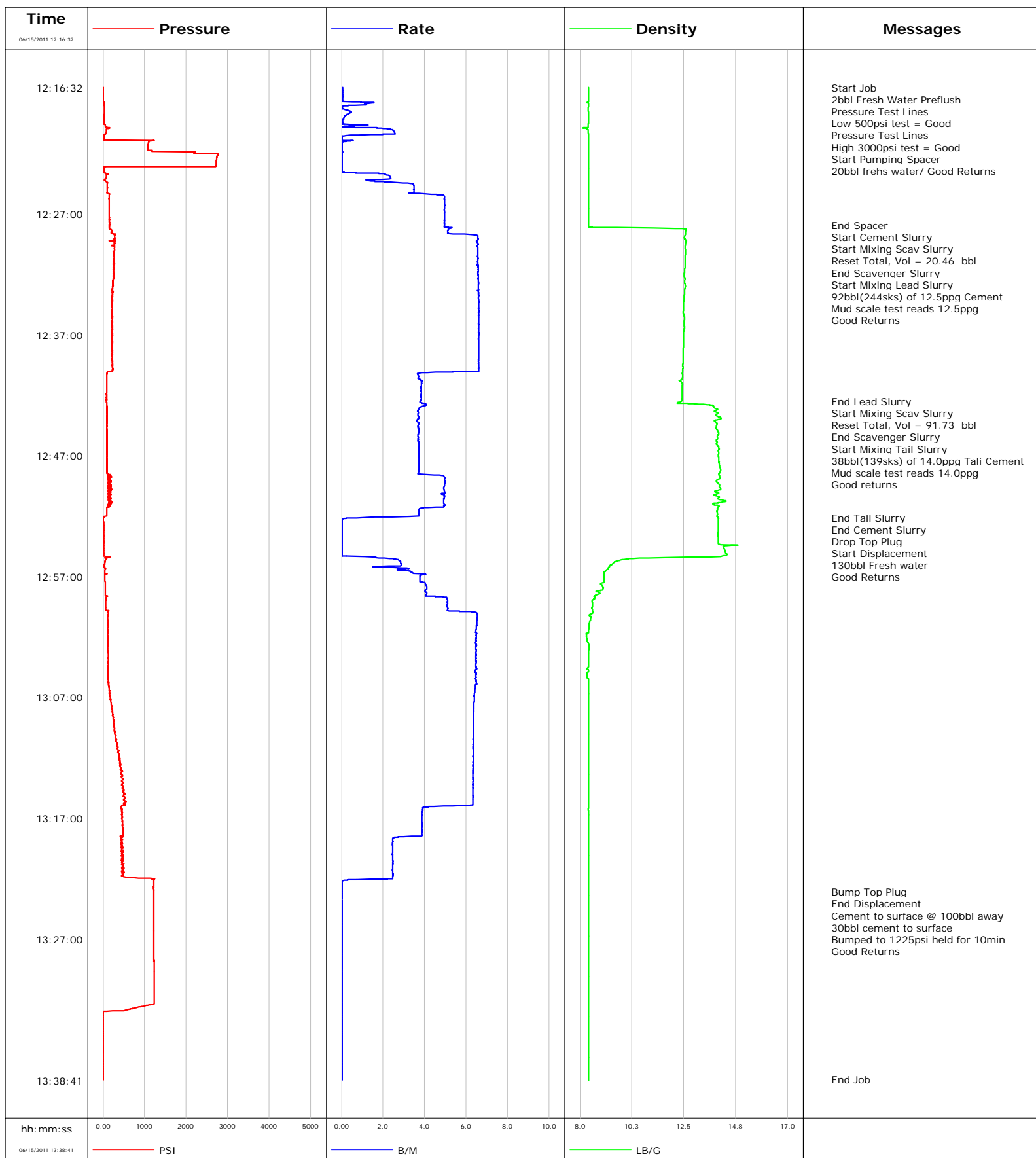


Well WF04A-35 H26 596
Field N. PARACHUTE
Engineer Dustin Cyrus Krueger
Country United States

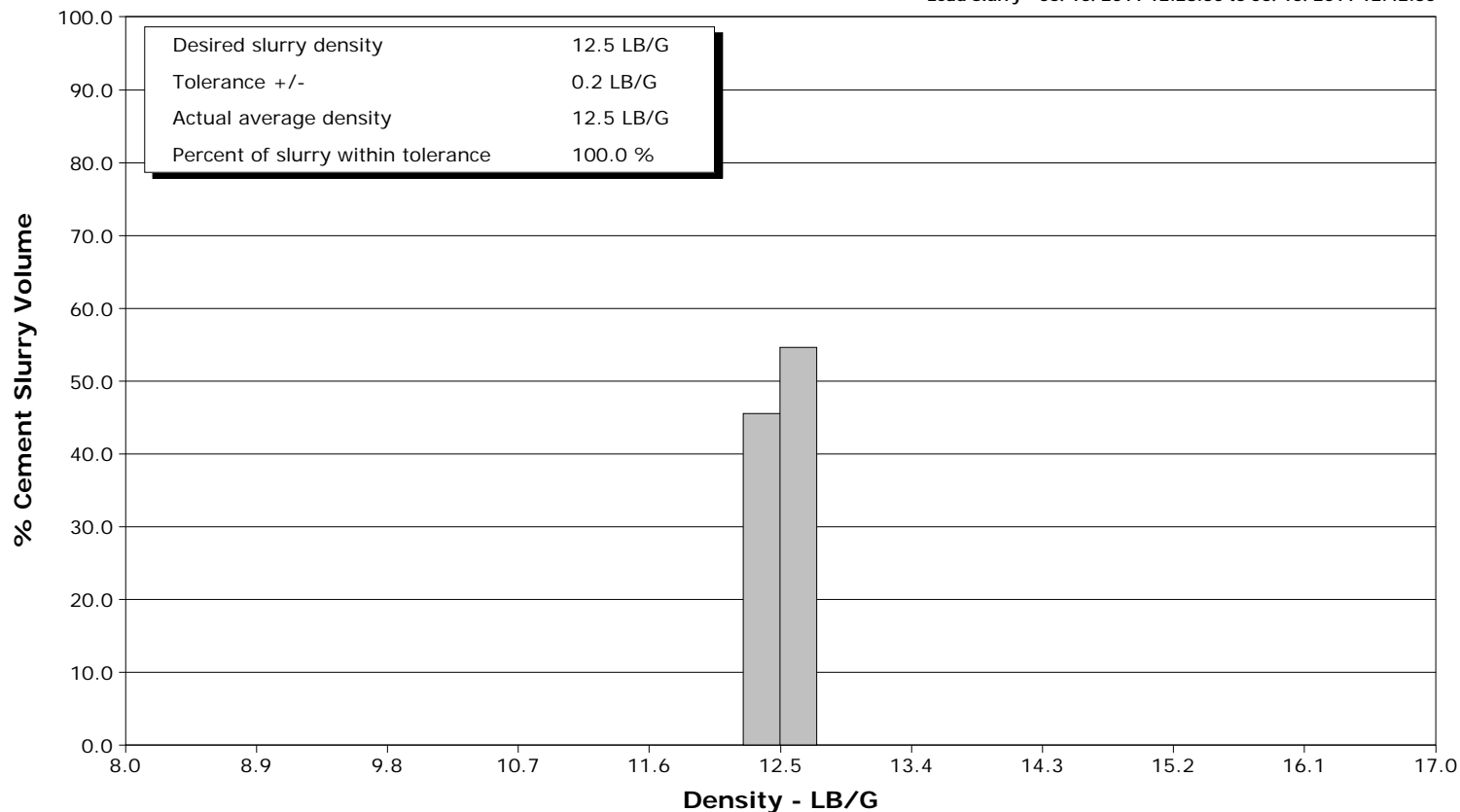
Client Encana
SIR No. 000573541
Job Type Surface
Job Date 06-15-2011



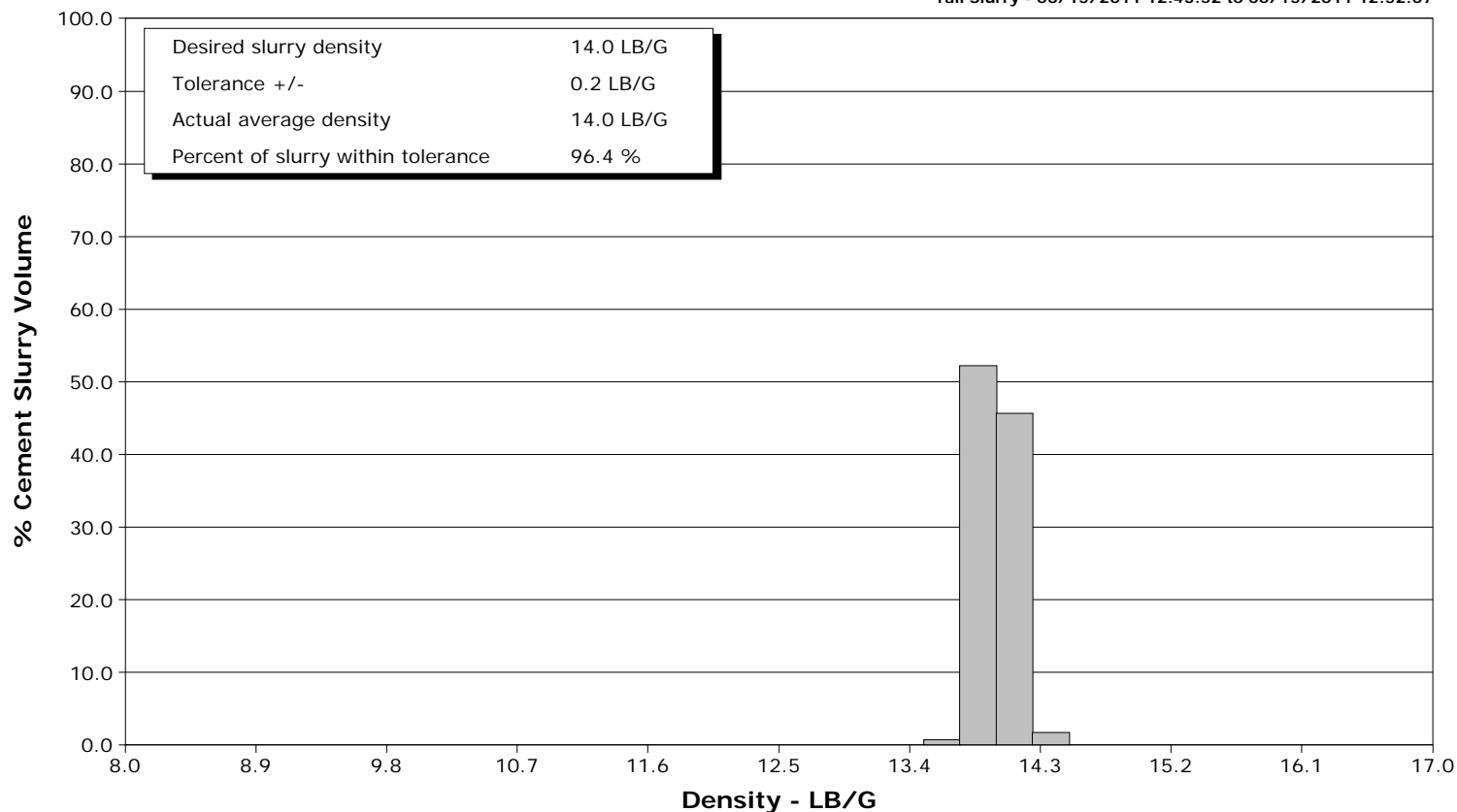
Well WF04A-35 H26 596
Field N. PARACHUTE
Engineer Dustin Cyrus Krueger
Country United States

Client Encana
SIR No. 000573541
Job Type Surface
Job Date 06-15-2011

Lead Slurry - 06/15/2011 12:28:30 to 06/15/2011 12:42:30



Tail Slurry - 06/15/2011 12:43:52 to 06/15/2011 12:52:07



Cementing Service Report

				Customer Encana				Job Number 000573541							
Well WF04A-35 H26 596 WF04A-35 H26 596				Location (legal) H26 596				Schlumberger Location Grand Junction				Job Start Jun/15/2011			
Field N. PARACHUTE			Formation Name/Type Shale			Deviation deg		Bit Size 12.3 in		Well MD 1741.0 ft		Well TVD 1741.0 ft			
County Garfield			State/Province Colorado			BHP psi		BHST 100 degF		BHCT 87 degF		Pore Press. Gradient lb/gal			
Well Master			API/UWI												
Rig Name Patterson 303		Drilled For Gas		Service Via Land		Casing/Liner									
						Depth, ft		Size, in		Weight, lb/ft		Grade			
						120.0		16.0		65.0					
Offshore Zone		Well Class New		Well Type Development		1741.0		9.6		36.0		K-55			
Drilling Fluid Type Bentonite			Max. Density 9.40 lb/gal		Plastic Viscosity 11.000 cP		Tubing/Drill Pipe								
							T/D		Depth, ft		Size, in		Weight, lb/ft		
Service Line Cementing			Job Type Surface												
Max. Allowed Tub. Press 3000 psi			Max. Allowed Ann. Press 500 psi		WH Connection 9 5/8		Perforations/Open Hole								
							Top, ft		Bottom, ft		shot/ft		No. of Shots		
							ft		ft						
							ft		ft				Diameter in		
							ft		ft						
							Treat Down Casing		Displacement 130.8 bbl		Packer Type		Packer Depth ft		
							Tubing Vol. bbl		Casing Vol. 133.6 bbl		Annular Vol. 107.0 bbl		Openhole Vol. 251.0 bbl		
Casing/Tubing Secured <input checked="" type="checkbox"/>			1 Hole Vol. Circulated prior to Cement <input checked="" type="checkbox"/>			Casing Tools				Squeeze Job					
Lift Pressure 402 psi						Shoe Type Guide				Squeeze Type					
Pipe Rotated <input type="checkbox"/>			Pipe Reciprocated <input type="checkbox"/>			Shoe Depth 1741.0 ft				Tool Type					
No. Centralizers			Top Plugs 1		Bottom Plugs		Stage Tool Type				Tool Depth ft				
Cement Head Type Single						Stage Tool Depth ft				Tail Pipe Size in					
Job Scheduled For Jun/15/2011 11:00			Arrived on Location Jun/15/2011 11:00			Leave Location Jun/15/2011 00:14		Collar Type Float				Tail Pipe Depth ft			
								Collar Depth 1692.0 ft				Sqz. Total Vol. bbl			
Date	Time 24-hr clock	Treating Pressure PSI	Flow Rate B/M	Density LB/G	Volume BBL	Message									
06/15/2011	12:16:32	-3	0.1	8.38	0.0	Started Acquisition									
06/15/2011	12:16:34	-3	0.1	8.38	0.0	Start Job									
06/15/2011	12:16:36	-3	0.1	8.38	0.0	2bbl Fresh Water Preflush									
06/15/2011	12:16:39	-3	0.1	8.38	0.0	Pressure Test Lines									
06/15/2011	12:16:41	-3	0.1	8.38	0.0	Low 500psi test = Good									
06/15/2011	12:16:45	-3	0.1	8.38	0.0	Pressure Test Lines									
06/15/2011	12:16:47	-3	0.0	8.38	0.0	High 3000psi test = Good									
06/15/2011	12:16:50	-3	0.1	8.38	0.0	Start Pumping Spacer									
06/15/2011	12:16:52	-3	0.1	8.38	0.0	20bbl frehs water/ Good Returns									
06/15/2011	12:19:02	23	0.1	8.38	0.6										
06/15/2011	12:21:32	1077	0.0	8.38	2.3										
06/15/2011	12:24:02	73	2.4	8.37	3.2										
06/15/2011	12:26:32	149	5.0	8.37	12.9										
06/15/2011	12:27:57	156	5.0	8.37	20.0	End Spacer									
06/15/2011	12:27:59	154	5.0	8.37	20.1	Start Cement Slurry									
06/15/2011	12:28:00	152	5.0	8.37	20.2	Start Mixing Scav Slurry									
06/15/2011	12:28:03	154	5.0	8.37	20.5	Reset Total, Vol = 20.46 bbl									
06/15/2011	12:28:25	214	5.1	12.58	22.3	End Scavenger Slurry									
06/15/2011	12:28:30	213	5.1	12.57	22.8	Start Mixing Lead Slurry									
06/15/2011	12:28:32	201	5.1	12.57	22.9	92bbl(244sks) of 12.5ppg Cement									
06/15/2011	12:28:33	206	5.1	12.57	23.0	Mud scale test reads 12.5ppg									

Well WF04A-35 H26 596 WF04A-35 H26 596			Field N. PARACHUTE		Job Start Jun/15/2011	Customer Encana	Job Number 000573541
Date	Time 24-hr clock	Treating Pressure PSI	Flow Rate B/M	Density LB/G	Volume BBL	Message	
06/15/2011	12:31:32	259	6.6	12.54	42.4		
06/15/2011	12:34:02	219	6.6	12.50	58.8		
06/15/2011	12:36:32	230	6.6	12.51	75.4		
06/15/2011	12:39:02	217	6.6	12.47	91.9		
06/15/2011	12:41:32	84	3.8	12.43	104.3		
06/15/2011	12:42:30	83	3.8	12.40	108.0	End Lead Slurry	
06/15/2011	12:42:31	83	3.8	12.39	108.1	Start Mixing Scav Slurry	
06/15/2011	12:43:36	94	3.7	13.89	112.2	Reset Total, Vol = 91.73 bbl	
06/15/2011	12:43:51	93	3.7	14.08	113.1	End Scavenger Slurry	
06/15/2011	12:43:52	93	3.7	14.10	113.2	Start Mixing Tail Slurry	
06/15/2011	12:44:02	93	3.6	13.98	113.8		
06/15/2011	12:45:30	94	3.7	13.95	119.2	38bbl(139sks) of 14.0ppg Tali Cement	
06/15/2011	12:45:31	94	3.7	13.96	119.3	Good returns	
06/15/2011	12:46:32	93	3.7	14.02	123.0		
06/15/2011	12:49:02	136	5.0	13.92	132.9		
06/15/2011	12:51:32	90	3.7	13.94	144.9		
06/15/2011	12:52:07	7	1.2	13.99	147.0	End Tail Slurry	
06/15/2011	12:52:12	-1	0.2	14.00	147.1	End Cement Slurry	
06/15/2011	12:52:14	-1	0.1	14.00	147.1	Drop Top Plug	
06/15/2011	12:52:15	-1	0.1	14.00	147.1	Start Displacement	
06/15/2011	12:52:18	-0	0.0	14.00	147.1	130bbl Fresh water	
06/15/2011	12:54:02	6	0.0	13.98	147.1		
06/15/2011	12:56:32	41	3.2	9.11	150.1		
06/15/2011	12:59:02	64	5.1	8.53	160.3		
06/15/2011	13:01:32	116	6.5	8.38	175.4		
06/15/2011	13:04:02	122	6.5	8.37	191.6		
06/15/2011	13:06:32	155	6.4	8.37	207.7		
06/15/2011	13:09:02	259	6.3	8.37	223.7		
06/15/2011	13:11:32	360	6.3	8.37	239.5		
06/15/2011	13:14:02	486	6.3	8.37	255.4		
06/15/2011	13:16:32	468	3.9	8.37	269.8		
06/15/2011	13:19:02	425	2.5	8.37	278.8		
06/15/2011	13:21:32	465	2.5	8.37	285.0		
06/15/2011	13:23:05	1215	0.0	8.37	286.3	Bump Top Plug	
06/15/2011	13:23:06	1215	0.0	8.38	286.3	End Displacement	
06/15/2011	13:23:11	1215	0.0	8.37	286.3	Cement to surface @ 100bbl away	
06/15/2011	13:23:13	1215	0.0	8.37	286.3	30bbl cement to surface	
06/15/2011	13:24:02	1217	0.0	8.37	286.3		
06/15/2011	13:26:32	1221	0.0	8.38	286.3		
06/15/2011	13:26:36	1221	0.0	8.38	286.3	Bumped to 1225psi held for 10min	
06/15/2011	13:26:37	1221	0.0	8.38	286.3	Good Returns	
06/15/2011	13:29:02	1227	0.0	8.38	286.3		
06/15/2011	13:31:32	1232	0.0	8.38	286.3		
06/15/2011	13:34:02	-1	0.0	8.38	286.3		
06/15/2011	13:36:32	-1	0.0	8.38	286.3		

Well WF04A-35 H26 596 WF04A-35 H26 596	Field N. PARACHUTE	Job Start Jun/15/2011	Customer Encana	Job Number 000573541
--	------------------------------	---------------------------------	---------------------------	--------------------------------

Post Job Summary

Average Pump Rates, bbl/min					Volume of Fluid Injected, bbl						
Slurry 4.7	N2	Mud 0.0	Maximum Rate 6.6		Total Slurry 130.0	Mud 0.0	Spacer 19.9	N2			
Treating Pressure Summary, psi					Breakdown Fluid						
Maximum 2782	Final -2	Average 394	Bump Plug to 1378	Breakdown	Type FreshWater	Volume 329.0 bbl		Density 8.34 lb/gal			
Avg. N2 Percent %		Designed Slurry Volume 130.0 bbl		Displacement 130.8 bbl		Mix Water Temp 85 degF		Cement Circulated to Surface?	<input checked="" type="checkbox"/>	Volume 30.0 bbl	
								Washed Thru Perfs	<input type="checkbox"/>	To ft	
Customer or Authorized Representative Cody Huseby				Schlumberger Supervisor Dustin Cyrus Krueger				Circulation Lost	<input type="checkbox"/>	Job Completed	<input checked="" type="checkbox"/>
								-		-	