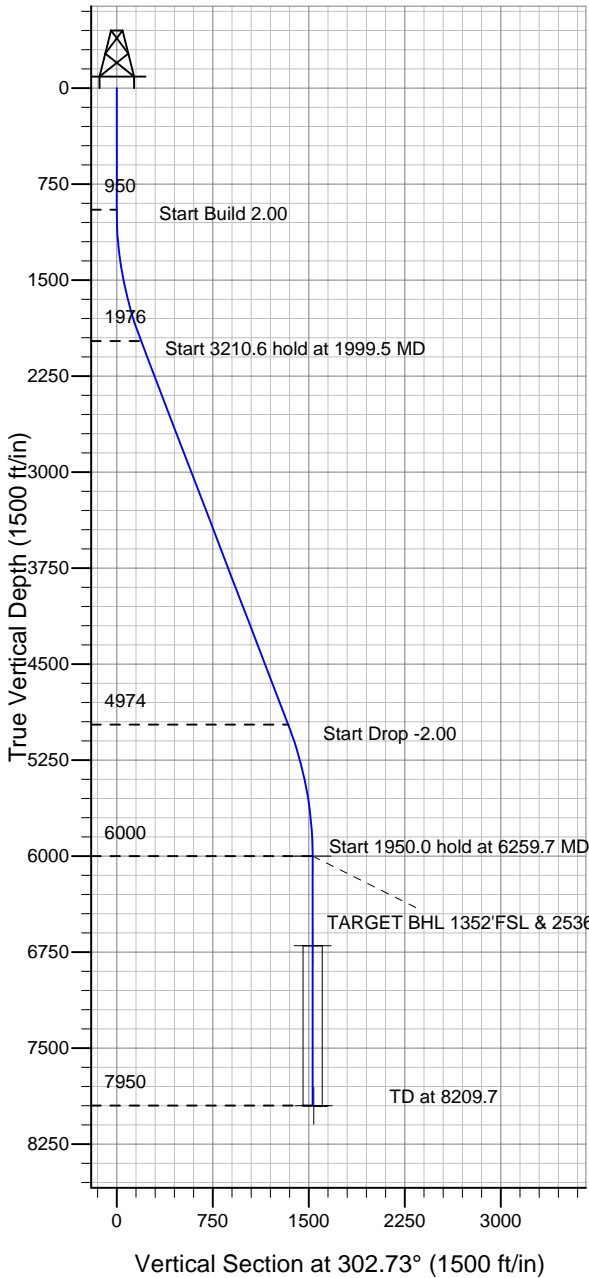


# ENSIGN

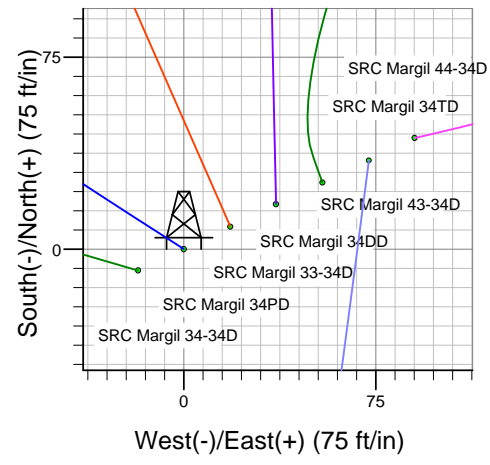
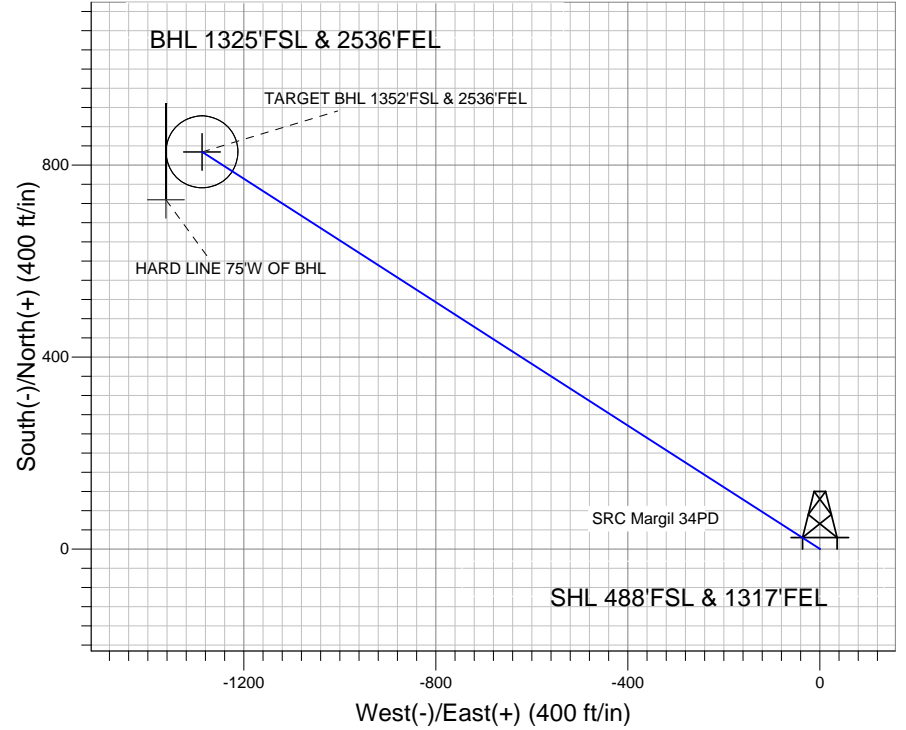
## Directional

### Well Name: SRC Margil 34PD

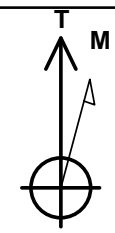
Surface Location: SRC Margil 34-34D Pad Sec.34-T4N-R68W  
 North American Datum 1983 US State Plane 1983 Colorado Northern Zone  
 Ground Elevation: 5091.0  
 +N/-S +E/-W Northing Easting Latitude Longitude Slot  
 0.0 0.0 1339420.86 3143834.82 40.263962 -104.984588  
 Original Well Elev WELL @ 5104.0ft (Original Well Elev)



### Synergy Resources



SRC Margil 34-34D Pad Sec.34-T4N-R68W  
 SRC Margil 34PD  
 Plan #1 (12-28-11)  
 9:41, December 29 2011



Azimuths to True North  
 Magnetic North: 8.90°  
 Magnetic Field  
 Strength: 52977.3nT  
 Dip Angle: 66.89°  
 Date: 12/28/2011  
 Model: IGRF2010

### WELLBORE TARGET DETAILS (LAT/LONG)

Name	TVD	+N/-S	+E/-W	Latitude	Longitude	Shape
TARGET BHL 1352'FSL & 2536'FEL	6000.0	827.4	-1287.4	40.266233	-104.989201	Point
TARGET CIRCLE 1352'FSL & 2536'FEL	6700.0	827.4	-1287.4	40.266233	-104.989201	Circle (Radius: 75.0)
HARD LINE 75'W OF BHL	7950.0	727.4	-1362.4	40.265959	-104.989470	Polygon

### SECTION DETAILS

Sec	MD	Inc	Azi	TVD	+N/-S	+E/-W	DLeg	TFace	VSec	Target
1	0.0	0.00	0.00	0.0	0.0	0.0	0.00	0.00	0.0	
2	950.0	0.00	0.00	950.0	0.0	0.0	0.00	0.00	0.0	
3	1999.5	20.99	302.73	1976.2	102.8	-159.9	2.00	302.73	190.1	
4	5210.2	20.99	302.73	4973.8	724.6	-1127.4	0.00	0.00	1340.2	
5	6259.7	0.00	0.00	6000.0	827.4	-1287.4	2.00	180.00	1530.3	TARGET BHL 1352'FSL & 2536'FEL
6	8209.7	0.00	0.00	7950.0	827.4	-1287.4	0.00	0.00	1530.3	



## **Directional**

### **Synergy Resources**

**SEC.34-T4N-R68W**

**SRC Margil 34-34D Pad Sec.34-T4N-R68W**

**SRC Margil 34PD**

**Wellbore #1**

**Plan: Plan #1 (12-28-11)**

### **Standard Planning Report**

**29 December, 2011**

Plan Sections										
Measured Depth (ft)	Inclination (°)	Azimuth (°)	Vertical Depth (ft)	+N/-S (ft)	+E/-W (ft)	Dogleg Rate (°/100ft)	Build Rate (°/100ft)	Turn Rate (°/100ft)	TFO (°)	Target
0.0	0.00	0.00	0.0	0.0	0.0	0.00	0.00	0.00	0.00	
950.0	0.00	0.00	950.0	0.0	0.0	0.00	0.00	0.00	0.00	
1,999.5	20.99	302.73	1,976.2	102.8	-159.9	2.00	2.00	0.00	302.73	
5,210.2	20.99	302.73	4,973.8	724.6	-1,127.4	0.00	0.00	0.00	0.00	
6,259.7	0.00	0.00	6,000.0	827.4	-1,287.4	2.00	-2.00	0.00	180.00	TARGET BHL 1352
8,209.7	0.00	0.00	7,950.0	827.4	-1,287.4	0.00	0.00	0.00	0.00	

<b>Database:</b>	Landmark	<b>Local Co-ordinate Reference:</b>	Well SRC Margil 34PD
<b>Company:</b>	Synergy Resources	<b>TVD Reference:</b>	WELL @ 5104.0ft (Original Well Elev)
<b>Project:</b>	SEC.34-T4N-R68W	<b>MD Reference:</b>	WELL @ 5104.0ft (Original Well Elev)
<b>Site:</b>	SRC Margil 34-34D Pad Sec.34-T4N-R68W	<b>North Reference:</b>	True
<b>Well:</b>	SRC Margil 34PD	<b>Survey Calculation Method:</b>	Minimum Curvature
<b>Wellbore:</b>	Wellbore #1		
<b>Design:</b>	Plan #1 (12-28-11)		

Planned Survey									
Measured Depth (ft)	Inclination (°)	Azimuth (°)	Vertical Depth (ft)	+N/-S (ft)	+E/-W (ft)	Vertical Section (ft)	Dogleg Rate (°/100ft)	Build Rate (°/100ft)	Turn Rate (°/100ft)
0.0	0.00	0.00	0.0	0.0	0.0	0.0	0.00	0.00	0.00
40.0	0.00	0.00	40.0	0.0	0.0	0.0	0.00	0.00	0.00
80.0	0.00	0.00	80.0	0.0	0.0	0.0	0.00	0.00	0.00
120.0	0.00	0.00	120.0	0.0	0.0	0.0	0.00	0.00	0.00
160.0	0.00	0.00	160.0	0.0	0.0	0.0	0.00	0.00	0.00
200.0	0.00	0.00	200.0	0.0	0.0	0.0	0.00	0.00	0.00
240.0	0.00	0.00	240.0	0.0	0.0	0.0	0.00	0.00	0.00
280.0	0.00	0.00	280.0	0.0	0.0	0.0	0.00	0.00	0.00
320.0	0.00	0.00	320.0	0.0	0.0	0.0	0.00	0.00	0.00
360.0	0.00	0.00	360.0	0.0	0.0	0.0	0.00	0.00	0.00
400.0	0.00	0.00	400.0	0.0	0.0	0.0	0.00	0.00	0.00
440.0	0.00	0.00	440.0	0.0	0.0	0.0	0.00	0.00	0.00
480.0	0.00	0.00	480.0	0.0	0.0	0.0	0.00	0.00	0.00
520.0	0.00	0.00	520.0	0.0	0.0	0.0	0.00	0.00	0.00
560.0	0.00	0.00	560.0	0.0	0.0	0.0	0.00	0.00	0.00
600.0	0.00	0.00	600.0	0.0	0.0	0.0	0.00	0.00	0.00
640.0	0.00	0.00	640.0	0.0	0.0	0.0	0.00	0.00	0.00
650.0	0.00	0.00	650.0	0.0	0.0	0.0	0.00	0.00	0.00
8 5/8"									
680.0	0.00	0.00	680.0	0.0	0.0	0.0	0.00	0.00	0.00
720.0	0.00	0.00	720.0	0.0	0.0	0.0	0.00	0.00	0.00
760.0	0.00	0.00	760.0	0.0	0.0	0.0	0.00	0.00	0.00
800.0	0.00	0.00	800.0	0.0	0.0	0.0	0.00	0.00	0.00
840.0	0.00	0.00	840.0	0.0	0.0	0.0	0.00	0.00	0.00
880.0	0.00	0.00	880.0	0.0	0.0	0.0	0.00	0.00	0.00
920.0	0.00	0.00	920.0	0.0	0.0	0.0	0.00	0.00	0.00
950.0	0.00	0.00	950.0	0.0	0.0	0.0	0.00	0.00	0.00
960.0	0.20	302.73	960.0	0.0	0.0	0.0	2.00	2.00	0.00
1,000.0	1.00	302.73	1,000.0	0.2	-0.4	0.4	2.00	2.00	0.00
1,040.0	1.80	302.73	1,040.0	0.8	-1.2	1.4	2.00	2.00	0.00
1,080.0	2.60	302.73	1,080.0	1.6	-2.5	2.9	2.00	2.00	0.00
1,120.0	3.40	302.73	1,119.9	2.7	-4.2	5.0	2.00	2.00	0.00
1,160.0	4.20	302.73	1,159.8	4.2	-6.5	7.7	2.00	2.00	0.00
1,200.0	5.00	302.73	1,199.7	5.9	-9.2	10.9	2.00	2.00	0.00
1,240.0	5.80	302.73	1,239.5	7.9	-12.3	14.7	2.00	2.00	0.00
1,280.0	6.60	302.73	1,279.3	10.3	-16.0	19.0	2.00	2.00	0.00
1,320.0	7.40	302.73	1,319.0	12.9	-20.1	23.9	2.00	2.00	0.00
1,360.0	8.20	302.73	1,358.6	15.8	-24.6	29.3	2.00	2.00	0.00
1,400.0	9.00	302.73	1,398.2	19.1	-29.7	35.3	2.00	2.00	0.00
1,440.0	9.80	302.73	1,437.6	22.6	-35.2	41.8	2.00	2.00	0.00
1,480.0	10.60	302.73	1,477.0	26.4	-41.1	48.9	2.00	2.00	0.00
1,520.0	11.40	302.73	1,516.2	30.6	-47.5	56.5	2.00	2.00	0.00
1,560.0	12.20	302.73	1,555.4	35.0	-54.4	64.7	2.00	2.00	0.00
1,600.0	13.00	302.73	1,594.4	39.7	-61.8	73.4	2.00	2.00	0.00
1,640.0	13.80	302.73	1,633.3	44.7	-69.6	82.7	2.00	2.00	0.00
1,680.0	14.60	302.73	1,672.1	50.0	-77.8	92.5	2.00	2.00	0.00
1,720.0	15.40	302.73	1,710.8	55.6	-86.5	102.9	2.00	2.00	0.00
1,760.0	16.20	302.73	1,749.3	61.5	-95.7	113.7	2.00	2.00	0.00
1,800.0	17.00	302.73	1,787.6	67.7	-105.3	125.2	2.00	2.00	0.00
1,840.0	17.80	302.73	1,825.8	74.1	-115.4	137.1	2.00	2.00	0.00
1,880.0	18.60	302.73	1,863.8	80.9	-125.9	149.6	2.00	2.00	0.00
1,920.0	19.40	302.73	1,901.6	87.9	-136.8	162.7	2.00	2.00	0.00
1,960.0	20.20	302.73	1,939.2	95.3	-148.2	176.2	2.00	2.00	0.00
1,999.5	20.99	302.73	1,976.2	102.8	-159.9	190.1	2.00	2.00	0.00

<b>Database:</b>	Landmark	<b>Local Co-ordinate Reference:</b>	Well SRC Margil 34PD
<b>Company:</b>	Synergy Resources	<b>TVD Reference:</b>	WELL @ 5104.0ft (Original Well Elev)
<b>Project:</b>	SEC.34-T4N-R68W	<b>MD Reference:</b>	WELL @ 5104.0ft (Original Well Elev)
<b>Site:</b>	SRC Margil 34-34D Pad Sec.34-T4N-R68W	<b>North Reference:</b>	True
<b>Well:</b>	SRC Margil 34PD	<b>Survey Calculation Method:</b>	Minimum Curvature
<b>Wellbore:</b>	Wellbore #1		
<b>Design:</b>	Plan #1 (12-28-11)		

Planned Survey									
Measured Depth (ft)	Inclination (°)	Azimuth (°)	Vertical Depth (ft)	+N/-S (ft)	+E/-W (ft)	Vertical Section (ft)	Dogleg Rate (°/100ft)	Build Rate (°/100ft)	Turn Rate (°/100ft)
2,000.0	20.99	302.73	1,976.6	102.9	-160.1	190.3	0.00	0.00	0.00
2,040.0	20.99	302.73	2,014.0	110.6	-172.1	204.6	0.00	0.00	0.00
2,080.0	20.99	302.73	2,051.3	118.4	-184.2	218.9	0.00	0.00	0.00
2,120.0	20.99	302.73	2,088.7	126.1	-196.2	233.3	0.00	0.00	0.00
2,160.0	20.99	302.73	2,126.0	133.9	-208.3	247.6	0.00	0.00	0.00
2,200.0	20.99	302.73	2,163.4	141.6	-220.3	261.9	0.00	0.00	0.00
2,240.0	20.99	302.73	2,200.7	149.4	-232.4	276.2	0.00	0.00	0.00
2,280.0	20.99	302.73	2,238.1	157.1	-244.4	290.6	0.00	0.00	0.00
2,320.0	20.99	302.73	2,275.4	164.9	-256.5	304.9	0.00	0.00	0.00
2,360.0	20.99	302.73	2,312.8	172.6	-268.6	319.2	0.00	0.00	0.00
2,400.0	20.99	302.73	2,350.1	180.3	-280.6	333.6	0.00	0.00	0.00
2,440.0	20.99	302.73	2,387.5	188.1	-292.7	347.9	0.00	0.00	0.00
2,480.0	20.99	302.73	2,424.8	195.8	-304.7	362.2	0.00	0.00	0.00
2,520.0	20.99	302.73	2,462.1	203.6	-316.8	376.5	0.00	0.00	0.00
2,560.0	20.99	302.73	2,499.5	211.3	-328.8	390.9	0.00	0.00	0.00
2,600.0	20.99	302.73	2,536.8	219.1	-340.9	405.2	0.00	0.00	0.00
2,640.0	20.99	302.73	2,574.2	226.8	-352.9	419.5	0.00	0.00	0.00
2,680.0	20.99	302.73	2,611.5	234.6	-365.0	433.9	0.00	0.00	0.00
2,720.0	20.99	302.73	2,648.9	242.3	-377.0	448.2	0.00	0.00	0.00
2,760.0	20.99	302.73	2,686.2	250.1	-389.1	462.5	0.00	0.00	0.00
2,800.0	20.99	302.73	2,723.6	257.8	-401.1	476.8	0.00	0.00	0.00
2,840.0	20.99	302.73	2,760.9	265.6	-413.2	491.2	0.00	0.00	0.00
2,880.0	20.99	302.73	2,798.3	273.3	-425.3	505.5	0.00	0.00	0.00
2,920.0	20.99	302.73	2,835.6	281.1	-437.3	519.8	0.00	0.00	0.00
2,960.0	20.99	302.73	2,872.9	288.8	-449.4	534.2	0.00	0.00	0.00
3,000.0	20.99	302.73	2,910.3	296.5	-461.4	548.5	0.00	0.00	0.00
3,040.0	20.99	302.73	2,947.6	304.3	-473.5	562.8	0.00	0.00	0.00
3,080.0	20.99	302.73	2,985.0	312.0	-485.5	577.1	0.00	0.00	0.00
3,120.0	20.99	302.73	3,022.3	319.8	-497.6	591.5	0.00	0.00	0.00
3,160.0	20.99	302.73	3,059.7	327.5	-509.6	605.8	0.00	0.00	0.00
3,200.0	20.99	302.73	3,097.0	335.3	-521.7	620.1	0.00	0.00	0.00
3,240.0	20.99	302.73	3,134.4	343.0	-533.7	634.5	0.00	0.00	0.00
3,280.0	20.99	302.73	3,171.7	350.8	-545.8	648.8	0.00	0.00	0.00
3,320.0	20.99	302.73	3,209.1	358.5	-557.8	663.1	0.00	0.00	0.00
3,360.0	20.99	302.73	3,246.4	366.3	-569.9	677.4	0.00	0.00	0.00
3,400.0	20.99	302.73	3,283.7	374.0	-582.0	691.8	0.00	0.00	0.00
3,440.0	20.99	302.73	3,321.1	381.8	-594.0	706.1	0.00	0.00	0.00
3,480.0	20.99	302.73	3,358.4	389.5	-606.1	720.4	0.00	0.00	0.00
3,520.0	20.99	302.73	3,395.8	397.3	-618.1	734.8	0.00	0.00	0.00
3,560.0	20.99	302.73	3,433.1	405.0	-630.2	749.1	0.00	0.00	0.00
3,600.0	20.99	302.73	3,470.5	412.8	-642.2	763.4	0.00	0.00	0.00
3,640.0	20.99	302.73	3,507.8	420.5	-654.3	777.7	0.00	0.00	0.00
3,680.0	20.99	302.73	3,545.2	428.2	-666.3	792.1	0.00	0.00	0.00
3,720.0	20.99	302.73	3,582.5	436.0	-678.4	806.4	0.00	0.00	0.00
3,760.0	20.99	302.73	3,619.9	443.7	-690.4	820.7	0.00	0.00	0.00
3,800.0	20.99	302.73	3,657.2	451.5	-702.5	835.1	0.00	0.00	0.00
3,840.0	20.99	302.73	3,694.5	459.2	-714.5	849.4	0.00	0.00	0.00
3,880.0	20.99	302.73	3,731.9	467.0	-726.6	863.7	0.00	0.00	0.00
3,920.0	20.99	302.73	3,769.2	474.7	-738.6	878.0	0.00	0.00	0.00
3,960.0	20.99	302.73	3,806.6	482.5	-750.7	892.4	0.00	0.00	0.00
4,000.0	20.99	302.73	3,843.9	490.2	-762.8	906.7	0.00	0.00	0.00
4,040.0	20.99	302.73	3,881.3	498.0	-774.8	921.0	0.00	0.00	0.00
4,080.0	20.99	302.73	3,918.6	505.7	-786.9	935.4	0.00	0.00	0.00
4,120.0	20.99	302.73	3,956.0	513.5	-798.9	949.7	0.00	0.00	0.00

<b>Database:</b>	Landmark	<b>Local Co-ordinate Reference:</b>	Well SRC Margil 34PD
<b>Company:</b>	Synergy Resources	<b>TVD Reference:</b>	WELL @ 5104.0ft (Original Well Elev)
<b>Project:</b>	SEC.34-T4N-R68W	<b>MD Reference:</b>	WELL @ 5104.0ft (Original Well Elev)
<b>Site:</b>	SRC Margil 34-34D Pad Sec.34-T4N-R68W	<b>North Reference:</b>	True
<b>Well:</b>	SRC Margil 34PD	<b>Survey Calculation Method:</b>	Minimum Curvature
<b>Wellbore:</b>	Wellbore #1		
<b>Design:</b>	Plan #1 (12-28-11)		

Planned Survey									
Measured Depth (ft)	Inclination (°)	Azimuth (°)	Vertical Depth (ft)	+N/-S (ft)	+E/-W (ft)	Vertical Section (ft)	Dogleg Rate (°/100ft)	Build Rate (°/100ft)	Turn Rate (°/100ft)
4,160.0	20.99	302.73	3,993.3	521.2	-811.0	964.0	0.00	0.00	0.00
4,200.0	20.99	302.73	4,030.7	529.0	-823.0	978.3	0.00	0.00	0.00
4,240.0	20.99	302.73	4,068.0	536.7	-835.1	992.7	0.00	0.00	0.00
4,280.0	20.99	302.73	4,105.3	544.4	-847.1	1,007.0	0.00	0.00	0.00
4,320.0	20.99	302.73	4,142.7	552.2	-859.2	1,021.3	0.00	0.00	0.00
4,360.0	20.99	302.73	4,180.0	559.9	-871.2	1,035.7	0.00	0.00	0.00
4,400.0	20.99	302.73	4,217.4	567.7	-883.3	1,050.0	0.00	0.00	0.00
4,440.0	20.99	302.73	4,254.7	575.4	-895.3	1,064.3	0.00	0.00	0.00
4,480.0	20.99	302.73	4,292.1	583.2	-907.4	1,078.6	0.00	0.00	0.00
4,520.0	20.99	302.73	4,329.4	590.9	-919.5	1,093.0	0.00	0.00	0.00
4,560.0	20.99	302.73	4,366.8	598.7	-931.5	1,107.3	0.00	0.00	0.00
4,600.0	20.99	302.73	4,404.1	606.4	-943.6	1,121.6	0.00	0.00	0.00
4,640.0	20.99	302.73	4,441.5	614.2	-955.6	1,136.0	0.00	0.00	0.00
4,680.0	20.99	302.73	4,478.8	621.9	-967.7	1,150.3	0.00	0.00	0.00
4,720.0	20.99	302.73	4,516.1	629.7	-979.7	1,164.6	0.00	0.00	0.00
4,760.0	20.99	302.73	4,553.5	637.4	-991.8	1,178.9	0.00	0.00	0.00
4,800.0	20.99	302.73	4,590.8	645.2	-1,003.8	1,193.3	0.00	0.00	0.00
4,840.0	20.99	302.73	4,628.2	652.9	-1,015.9	1,207.6	0.00	0.00	0.00
4,880.0	20.99	302.73	4,665.5	660.7	-1,027.9	1,221.9	0.00	0.00	0.00
4,920.0	20.99	302.73	4,702.9	668.4	-1,040.0	1,236.3	0.00	0.00	0.00
4,960.0	20.99	302.73	4,740.2	676.1	-1,052.0	1,250.6	0.00	0.00	0.00
5,000.0	20.99	302.73	4,777.6	683.9	-1,064.1	1,264.9	0.00	0.00	0.00
5,040.0	20.99	302.73	4,814.9	691.6	-1,076.2	1,279.2	0.00	0.00	0.00
5,080.0	20.99	302.73	4,852.3	699.4	-1,088.2	1,293.6	0.00	0.00	0.00
5,120.0	20.99	302.73	4,889.6	707.1	-1,100.3	1,307.9	0.00	0.00	0.00
5,160.0	20.99	302.73	4,927.0	714.9	-1,112.3	1,322.2	0.00	0.00	0.00
5,200.0	20.99	302.73	4,964.3	722.6	-1,124.4	1,336.6	0.00	0.00	0.00
5,210.2	20.99	302.73	4,973.8	724.6	-1,127.4	1,340.2	0.00	0.00	0.00
5,240.0	20.39	302.73	5,001.7	730.3	-1,136.3	1,350.7	2.00	-2.00	0.00
5,280.0	19.59	302.73	5,039.3	737.7	-1,147.8	1,364.4	2.00	-2.00	0.00
5,320.0	18.79	302.73	5,077.1	744.8	-1,158.9	1,377.6	2.00	-2.00	0.00
5,360.0	17.99	302.73	5,115.0	751.6	-1,169.5	1,390.2	2.00	-2.00	0.00
5,400.0	17.19	302.73	5,153.1	758.2	-1,179.7	1,402.3	2.00	-2.00	0.00
5,440.0	16.39	302.73	5,191.4	764.4	-1,189.4	1,413.8	2.00	-2.00	0.00
5,480.0	15.59	302.73	5,229.9	770.4	-1,198.7	1,424.9	2.00	-2.00	0.00
5,520.0	14.79	302.73	5,268.5	776.0	-1,207.5	1,435.3	2.00	-2.00	0.00
5,560.0	13.99	302.73	5,307.2	781.4	-1,215.8	1,445.3	2.00	-2.00	0.00
5,600.0	13.19	302.73	5,346.1	786.5	-1,223.7	1,454.7	2.00	-2.00	0.00
5,640.0	12.39	302.73	5,385.1	791.3	-1,231.2	1,463.5	2.00	-2.00	0.00
5,680.0	11.59	302.73	5,424.2	795.8	-1,238.2	1,471.9	2.00	-2.00	0.00
5,720.0	10.79	302.73	5,463.5	800.0	-1,244.7	1,479.6	2.00	-2.00	0.00
5,760.0	9.99	302.73	5,502.8	803.9	-1,250.8	1,486.8	2.00	-2.00	0.00
5,800.0	9.19	302.73	5,542.3	807.5	-1,256.4	1,493.5	2.00	-2.00	0.00
5,840.0	8.39	302.73	5,581.8	810.8	-1,261.5	1,499.6	2.00	-2.00	0.00
5,880.0	7.59	302.73	5,621.4	813.8	-1,266.2	1,505.2	2.00	-2.00	0.00
5,920.0	6.79	302.73	5,661.1	816.5	-1,270.4	1,510.2	2.00	-2.00	0.00
5,960.0	5.99	302.73	5,700.8	818.9	-1,274.2	1,514.7	2.00	-2.00	0.00
6,000.0	5.19	302.73	5,740.7	821.0	-1,277.5	1,518.5	2.00	-2.00	0.00
6,040.0	4.39	302.73	5,780.5	822.8	-1,280.3	1,521.9	2.00	-2.00	0.00
6,080.0	3.59	302.73	5,820.4	824.3	-1,282.6	1,524.7	2.00	-2.00	0.00
6,120.0	2.79	302.73	5,860.4	825.5	-1,284.5	1,526.9	2.00	-2.00	0.00
6,160.0	1.99	302.73	5,900.3	826.4	-1,285.9	1,528.6	2.00	-2.00	0.00
6,200.0	1.19	302.73	5,940.3	827.0	-1,286.8	1,529.7	2.00	-2.00	0.00
6,240.0	0.39	302.73	5,980.3	827.3	-1,287.3	1,530.2	2.00	-2.00	0.00

<b>Database:</b>	Landmark	<b>Local Co-ordinate Reference:</b>	Well SRC Margil 34PD
<b>Company:</b>	Synergy Resources	<b>TVD Reference:</b>	WELL @ 5104.0ft (Original Well Elev)
<b>Project:</b>	SEC.34-T4N-R68W	<b>MD Reference:</b>	WELL @ 5104.0ft (Original Well Elev)
<b>Site:</b>	SRC Margil 34-34D Pad Sec.34-T4N-R68W	<b>North Reference:</b>	True
<b>Well:</b>	SRC Margil 34PD	<b>Survey Calculation Method:</b>	Minimum Curvature
<b>Wellbore:</b>	Wellbore #1		
<b>Design:</b>	Plan #1 (12-28-11)		

Planned Survey									
Measured Depth (ft)	Inclination (°)	Azimuth (°)	Vertical Depth (ft)	+N/-S (ft)	+E/-W (ft)	Vertical Section (ft)	Dogleg Rate (°/100ft)	Build Rate (°/100ft)	Turn Rate (°/100ft)
6,259.7	0.00	0.00	6,000.0	827.4	-1,287.4	1,530.3	2.00	-2.00	0.00
<b>TARGET BHL 1352'FSL &amp; 2536'FEL</b>									
6,280.0	0.00	0.00	6,020.3	827.4	-1,287.4	1,530.3	0.00	0.00	0.00
6,320.0	0.00	0.00	6,060.3	827.4	-1,287.4	1,530.3	0.00	0.00	0.00
6,360.0	0.00	0.00	6,100.3	827.4	-1,287.4	1,530.3	0.00	0.00	0.00
6,400.0	0.00	0.00	6,140.3	827.4	-1,287.4	1,530.3	0.00	0.00	0.00
6,440.0	0.00	0.00	6,180.3	827.4	-1,287.4	1,530.3	0.00	0.00	0.00
6,480.0	0.00	0.00	6,220.3	827.4	-1,287.4	1,530.3	0.00	0.00	0.00
6,520.0	0.00	0.00	6,260.3	827.4	-1,287.4	1,530.3	0.00	0.00	0.00
6,560.0	0.00	0.00	6,300.3	827.4	-1,287.4	1,530.3	0.00	0.00	0.00
6,600.0	0.00	0.00	6,340.3	827.4	-1,287.4	1,530.3	0.00	0.00	0.00
6,640.0	0.00	0.00	6,380.3	827.4	-1,287.4	1,530.3	0.00	0.00	0.00
6,680.0	0.00	0.00	6,420.3	827.4	-1,287.4	1,530.3	0.00	0.00	0.00
6,720.0	0.00	0.00	6,460.3	827.4	-1,287.4	1,530.3	0.00	0.00	0.00
6,760.0	0.00	0.00	6,500.3	827.4	-1,287.4	1,530.3	0.00	0.00	0.00
6,800.0	0.00	0.00	6,540.3	827.4	-1,287.4	1,530.3	0.00	0.00	0.00
6,840.0	0.00	0.00	6,580.3	827.4	-1,287.4	1,530.3	0.00	0.00	0.00
6,880.0	0.00	0.00	6,620.3	827.4	-1,287.4	1,530.3	0.00	0.00	0.00
6,920.0	0.00	0.00	6,660.3	827.4	-1,287.4	1,530.3	0.00	0.00	0.00
6,959.7	0.00	0.00	6,700.0	827.4	-1,287.4	1,530.3	0.00	0.00	0.00
<b>TARGET CIRCLE 1352'FSL &amp; 2536'FEL</b>									
6,960.0	0.00	0.00	6,700.3	827.4	-1,287.4	1,530.3	0.00	0.00	0.00
7,000.0	0.00	0.00	6,740.3	827.4	-1,287.4	1,530.3	0.00	0.00	0.00
7,040.0	0.00	0.00	6,780.3	827.4	-1,287.4	1,530.3	0.00	0.00	0.00
7,080.0	0.00	0.00	6,820.3	827.4	-1,287.4	1,530.3	0.00	0.00	0.00
7,120.0	0.00	0.00	6,860.3	827.4	-1,287.4	1,530.3	0.00	0.00	0.00
7,160.0	0.00	0.00	6,900.3	827.4	-1,287.4	1,530.3	0.00	0.00	0.00
7,200.0	0.00	0.00	6,940.3	827.4	-1,287.4	1,530.3	0.00	0.00	0.00
7,240.0	0.00	0.00	6,980.3	827.4	-1,287.4	1,530.3	0.00	0.00	0.00
7,280.0	0.00	0.00	7,020.3	827.4	-1,287.4	1,530.3	0.00	0.00	0.00
7,320.0	0.00	0.00	7,060.3	827.4	-1,287.4	1,530.3	0.00	0.00	0.00
7,360.0	0.00	0.00	7,100.3	827.4	-1,287.4	1,530.3	0.00	0.00	0.00
7,400.0	0.00	0.00	7,140.3	827.4	-1,287.4	1,530.3	0.00	0.00	0.00
7,440.0	0.00	0.00	7,180.3	827.4	-1,287.4	1,530.3	0.00	0.00	0.00
7,480.0	0.00	0.00	7,220.3	827.4	-1,287.4	1,530.3	0.00	0.00	0.00
7,520.0	0.00	0.00	7,260.3	827.4	-1,287.4	1,530.3	0.00	0.00	0.00
7,560.0	0.00	0.00	7,300.3	827.4	-1,287.4	1,530.3	0.00	0.00	0.00
7,600.0	0.00	0.00	7,340.3	827.4	-1,287.4	1,530.3	0.00	0.00	0.00
7,640.0	0.00	0.00	7,380.3	827.4	-1,287.4	1,530.3	0.00	0.00	0.00
7,680.0	0.00	0.00	7,420.3	827.4	-1,287.4	1,530.3	0.00	0.00	0.00
7,720.0	0.00	0.00	7,460.3	827.4	-1,287.4	1,530.3	0.00	0.00	0.00
7,760.0	0.00	0.00	7,500.3	827.4	-1,287.4	1,530.3	0.00	0.00	0.00
7,800.0	0.00	0.00	7,540.3	827.4	-1,287.4	1,530.3	0.00	0.00	0.00
7,840.0	0.00	0.00	7,580.3	827.4	-1,287.4	1,530.3	0.00	0.00	0.00
7,880.0	0.00	0.00	7,620.3	827.4	-1,287.4	1,530.3	0.00	0.00	0.00
7,920.0	0.00	0.00	7,660.3	827.4	-1,287.4	1,530.3	0.00	0.00	0.00
7,960.0	0.00	0.00	7,700.3	827.4	-1,287.4	1,530.3	0.00	0.00	0.00
8,000.0	0.00	0.00	7,740.3	827.4	-1,287.4	1,530.3	0.00	0.00	0.00
8,040.0	0.00	0.00	7,780.3	827.4	-1,287.4	1,530.3	0.00	0.00	0.00
8,080.0	0.00	0.00	7,820.3	827.4	-1,287.4	1,530.3	0.00	0.00	0.00
8,120.0	0.00	0.00	7,860.3	827.4	-1,287.4	1,530.3	0.00	0.00	0.00
8,160.0	0.00	0.00	7,900.3	827.4	-1,287.4	1,530.3	0.00	0.00	0.00
8,200.0	0.00	0.00	7,940.3	827.4	-1,287.4	1,530.3	0.00	0.00	0.00
8,209.7	0.00	0.00	7,950.0	827.4	-1,287.4	1,530.3	0.00	0.00	0.00

<b>Database:</b>	Landmark	<b>Local Co-ordinate Reference:</b>	Well SRC Margil 34PD
<b>Company:</b>	Synergy Resources	<b>TVD Reference:</b>	WELL @ 5104.0ft (Original Well Elev)
<b>Project:</b>	SEC.34-T4N-R68W	<b>MD Reference:</b>	WELL @ 5104.0ft (Original Well Elev)
<b>Site:</b>	SRC Margil 34-34D Pad Sec.34-T4N-R68W	<b>North Reference:</b>	True
<b>Well:</b>	SRC Margil 34PD	<b>Survey Calculation Method:</b>	Minimum Curvature
<b>Wellbore:</b>	Wellbore #1		
<b>Design:</b>	Plan #1 (12-28-11)		

Planned Survey									
Measured Depth (ft)	Inclination (°)	Azimuth (°)	Vertical Depth (ft)	+N/-S (ft)	+E/-W (ft)	Vertical Section (ft)	Dogleg Rate (°/100ft)	Build Rate (°/100ft)	Turn Rate (°/100ft)
HARD LINE 75°W OF BHL									

Casing Points					
Measured Depth (ft)	Vertical Depth (ft)	Name		Casing Diameter (")	Hole Diameter (")
650.0	650.0	8 5/8"		8-5/8	12-1/4





# **Directional**

## **Synergy Resources**

**SEC.34-T4N-R68W**

**SRC Margil 34-34D Pad Sec.34-T4N-R68W**

**SRC Margil 34PD**

**Wellbore #1**

**Plan #1 (12-28-11)**

## **Anticollision Report**

**29 December, 2011**



SRC Margil 34-34D Pad Sec.34-T4N-R68W - SRC Margil 33-34D - Wellbore #1 - Plan #1 (12-28-11)													Offset Site Error:	0.0 ft
Survey Program: 0-MWD													Offset Well Error:	0.0 ft
Reference		Offset		Semi Major Axis			Distance							Warning
Measured Depth (ft)	Vertical Depth (ft)	Measured Depth (ft)	Vertical Depth (ft)	Reference (ft)	Offset (ft)	Highside Toolface (°)	Offset Wellbore Centre +N/-S (ft)	+E/-W (ft)	Between Centres (ft)	Between Ellipses (ft)	Minimum Separation (ft)	Separation Factor		
1,999.5	1,976.2	1,946.3	1,883.9	5.7	9.0	55.39	393.5	-150.4	305.2	293.9	11.27	27.077		
2,100.0	2,070.0	2,044.7	1,976.8	6.3	9.6	58.45	423.4	-163.5	316.4	303.9	12.48	25.348		
2,200.0	2,163.4	2,142.7	2,069.2	7.0	10.3	61.28	453.2	-176.5	328.4	314.7	13.75	23.878		
2,300.0	2,256.7	2,240.7	2,161.7	7.7	10.9	63.91	482.9	-189.6	341.2	326.1	15.08	22.630		
2,400.0	2,350.1	2,338.7	2,254.1	8.4	11.6	66.35	512.7	-202.6	354.6	338.2	16.44	21.574		
2,500.0	2,443.5	2,436.6	2,346.5	9.1	12.2	68.61	542.5	-215.6	368.7	350.8	17.83	20.680		
2,600.0	2,536.8	2,534.6	2,439.0	9.8	12.9	70.71	572.2	-228.7	383.2	364.0	19.24	19.921		
2,700.0	2,630.2	2,632.6	2,531.4	10.5	13.6	72.65	602.0	-241.7	398.3	377.6	20.66	19.275		
2,800.0	2,723.6	2,730.5	2,623.8	11.2	14.2	74.46	631.7	-254.8	413.8	391.7	22.10	18.723		
2,900.0	2,816.9	2,828.5	2,716.3	12.0	14.9	76.13	661.5	-267.8	429.6	406.1	23.54	18.250		
3,000.0	2,910.3	2,926.5	2,808.7	12.7	15.5	77.69	691.2	-280.8	445.8	420.8	24.99	17.842		
3,100.0	3,003.7	3,024.5	2,901.1	13.4	16.2	79.13	721.0	-293.9	462.3	435.8	26.43	17.489		
3,200.0	3,097.0	3,122.4	2,993.5	14.2	16.8	80.48	750.8	-306.9	479.0	451.2	27.88	17.183		
3,300.0	3,190.4	3,220.4	3,086.0	14.9	17.5	81.74	780.5	-319.9	496.0	466.7	29.32	16.915		
3,400.0	3,283.7	3,318.4	3,178.4	15.6	18.1	82.91	810.3	-333.0	513.2	482.5	30.77	16.682		
3,500.0	3,377.1	3,416.4	3,270.8	16.4	18.8	84.01	840.0	-346.0	530.7	498.5	32.21	16.476		
3,600.0	3,470.5	3,514.3	3,363.3	17.1	19.4	85.04	869.8	-359.0	548.3	514.6	33.65	16.295		
3,700.0	3,563.8	3,612.3	3,455.7	17.9	20.1	86.00	899.6	-372.1	566.0	530.9	35.08	16.134		
3,800.0	3,657.2	3,710.3	3,548.1	18.6	20.8	86.91	929.3	-385.1	583.9	547.4	36.51	15.992		
3,900.0	3,750.6	3,808.3	3,640.5	19.4	21.4	87.76	959.1	-398.1	601.9	564.0	37.94	15.865		
4,000.0	3,843.9	3,906.2	3,733.0	20.1	22.1	88.56	988.8	-411.2	620.1	580.7	39.37	15.752		
4,100.0	3,937.3	4,004.2	3,825.4	20.8	22.7	89.32	1,018.6	-424.2	638.4	597.6	40.79	15.651		
4,200.0	4,030.7	4,102.2	3,917.8	21.6	23.4	90.04	1,048.3	-437.3	656.8	614.5	42.21	15.560		
4,300.0	4,124.0	4,200.1	4,010.3	22.3	24.0	90.71	1,078.1	-450.3	675.2	631.6	43.62	15.478		
4,400.0	4,217.4	4,298.1	4,102.7	23.1	24.7	91.35	1,107.9	-463.3	693.8	648.7	45.04	15.404		
4,500.0	4,310.7	4,396.1	4,195.1	23.8	25.4	91.96	1,137.6	-476.4	712.4	666.0	46.45	15.338		
4,600.0	4,404.1	4,494.1	4,287.6	24.6	26.0	92.54	1,167.4	-489.4	731.1	683.3	47.86	15.278		
4,700.0	4,497.5	4,592.0	4,380.0	25.3	26.7	93.09	1,197.1	-502.4	749.9	700.6	49.26	15.223		
4,800.0	4,590.8	4,690.0	4,472.4	26.1	27.3	93.61	1,226.9	-515.5	768.7	718.1	50.66	15.174		
4,900.0	4,684.2	4,788.0	4,564.8	26.8	28.0	94.10	1,256.7	-528.5	787.6	735.6	52.06	15.129		
5,000.0	4,777.6	4,886.0	4,657.3	27.6	28.6	94.58	1,286.4	-541.5	806.6	753.1	53.46	15.088		
5,100.0	4,870.9	4,983.9	4,749.7	28.4	29.3	95.03	1,316.2	-554.6	825.6	770.7	54.86	15.050		
5,200.0	4,964.3	5,081.9	4,842.1	29.1	30.0	95.46	1,345.9	-567.6	844.6	788.4	56.25	15.016		
5,210.2	4,973.8	5,092.1	4,851.8	29.2	30.0	95.50	1,349.0	-569.0	846.6	790.2	56.39	15.013		
5,300.0	5,058.2	5,193.3	4,947.9	29.8	30.5	96.26	1,378.2	-581.7	862.9	805.4	57.54	14.997		
5,400.0	5,153.1	5,306.5	5,056.5	30.3	31.0	97.05	1,407.0	-594.4	879.2	820.5	58.64	14.993		
5,500.0	5,249.2	5,420.1	5,166.8	30.8	31.5	97.79	1,432.0	-605.3	893.4	833.8	59.63	14.984		
5,600.0	5,346.1	5,534.0	5,278.3	31.2	31.9	98.47	1,453.1	-614.5	905.6	845.1	60.50	14.967		
5,700.0	5,443.9	5,648.1	5,390.9	31.5	32.2	99.12	1,470.0	-622.0	915.6	854.4	61.27	14.945		
5,800.0	5,542.3	5,762.3	5,504.2	31.9	32.5	99.72	1,482.9	-627.6	923.6	861.7	61.92	14.916		
5,900.0	5,641.2	5,876.5	5,618.1	32.1	32.7	100.29	1,491.6	-631.4	929.4	867.0	62.46	14.881		
6,000.0	5,740.7	5,990.7	5,732.1	32.4	32.9	100.83	1,496.2	-633.4	933.1	870.3	62.88	14.840		
6,100.0	5,840.4	6,099.0	5,840.4	32.5	33.0	101.30	1,496.9	-633.8	934.8	871.6	63.19	14.793		
6,200.0	5,940.3	6,198.9	5,940.3	32.6	33.0	101.54	1,496.9	-633.8	935.6	872.1	63.43	14.750		
6,259.7	6,000.0	6,258.6	6,000.0	32.7	33.1	44.31	1,496.9	-633.8	935.7	872.2	63.54	14.726		
6,300.0	6,040.3	6,298.9	6,040.3	32.7	33.1	44.31	1,496.9	-633.8	935.7	872.1	63.61	14.710		
6,400.0	6,140.3	6,398.9	6,140.3	32.8	33.2	44.31	1,496.9	-633.8	935.7	871.9	63.79	14.669		
6,500.0	6,240.3	6,498.9	6,240.3	32.9	33.3	44.31	1,496.9	-633.8	935.7	871.7	63.97	14.627		
6,600.0	6,340.3	6,598.9	6,340.3	33.0	33.4	44.31	1,496.9	-633.8	935.7	871.5	64.16	14.585		
6,700.0	6,440.3	6,698.9	6,440.3	33.1	33.5	44.31	1,496.9	-633.8	935.7	871.4	64.34	14.542		
6,800.0	6,540.3	6,798.9	6,540.3	33.2	33.6	44.31	1,496.9	-633.8	935.7	871.2	64.53	14.499		
6,900.0	6,640.3	6,898.9	6,640.3	33.3	33.7	44.31	1,496.9	-633.8	935.7	871.0	64.73	14.456		

<b>Company:</b>	Synergy Resources	<b>Local Co-ordinate Reference:</b>	Well SRC Margil 34PD
<b>Project:</b>	SEC.34-T4N-R68W	<b>TVD Reference:</b>	WELL @ 5104.0ft (Original Well Elev)
<b>Reference Site:</b>	SRC Margil 34-34D Pad Sec.34-T4N-R68W	<b>MD Reference:</b>	WELL @ 5104.0ft (Original Well Elev)
<b>Site Error:</b>	0.0ft	<b>North Reference:</b>	True
<b>Reference Well:</b>	SRC Margil 34PD	<b>Survey Calculation Method:</b>	Minimum Curvature
<b>Well Error:</b>	0.0ft	<b>Output errors are at</b>	2.00 sigma
<b>Reference Wellbore</b>	Wellbore #1	<b>Database:</b>	Landmark
<b>Reference Design:</b>	Plan #1 (12-28-11)	<b>Offset TVD Reference:</b>	Offset Datum

<b>Offset Design</b> SRC Margil 34-34D Pad Sec.34-T4N-R68W - SRC Margil 33-34D - Wellbore #1 - Plan #1 (12-28-11)												<b>Offset Site Error:</b>	0.0 ft
Survey Program: 0-MWD												<b>Offset Well Error:</b>	0.0 ft
Reference	Offset	Semi Major Axis		Distance									
Measured Depth (ft)	Vertical Depth (ft)	Measured Depth (ft)	Vertical Depth (ft)	Reference (ft)	Offset (ft)	Highside Toolface (°)	Offset Wellbore Centre +N/-S (ft)	+E/-W (ft)	Between Centres (ft)	Between Ellipses (ft)	Minimum Separation (ft)	Separation Factor	Warning
7,000.0	6,740.3	6,998.9	6,740.3	33.4	33.7	44.31	1,496.9	-633.8	935.7	870.8	64.92	14.413	
7,100.0	6,840.3	7,098.9	6,840.3	33.5	33.8	44.31	1,496.9	-633.8	935.7	870.6	65.12	14.369	
7,200.0	6,940.3	7,198.9	6,940.3	33.6	33.9	44.31	1,496.9	-633.8	935.7	870.4	65.32	14.325	
7,300.0	7,040.3	7,298.9	7,040.3	33.7	34.0	44.31	1,496.9	-633.8	935.7	870.2	65.52	14.280	
7,400.0	7,140.3	7,398.9	7,140.3	33.8	34.1	44.31	1,496.9	-633.8	935.7	870.0	65.73	14.236	
7,500.0	7,240.3	7,498.9	7,240.3	33.9	34.2	44.31	1,496.9	-633.8	935.7	869.8	65.94	14.191	
7,600.0	7,340.3	7,598.9	7,340.3	34.0	34.3	44.31	1,496.9	-633.8	935.7	869.5	66.15	14.146	
7,700.0	7,440.3	7,698.9	7,440.3	34.1	34.4	44.31	1,496.9	-633.8	935.7	869.3	66.36	14.101	
7,800.0	7,540.3	7,798.9	7,540.3	34.2	34.5	44.31	1,496.9	-633.8	935.7	869.1	66.57	14.055	
7,900.0	7,640.3	7,898.9	7,640.3	34.3	34.6	44.31	1,496.9	-633.8	935.7	868.9	66.79	14.010	
8,000.0	7,740.3	7,998.9	7,740.3	34.4	34.7	44.31	1,496.9	-633.8	935.7	868.7	67.01	13.964	
8,100.0	7,840.3	8,098.9	7,840.3	34.5	34.8	44.31	1,496.9	-633.8	935.7	868.5	67.23	13.918	
8,209.7	7,950.0	8,208.6	7,950.0	34.6	34.9	44.31	1,496.9	-633.8	935.7	868.2	67.48	13.867	

<b>Company:</b>	Synergy Resources	<b>Local Co-ordinate Reference:</b>	Well SRC Margil 34PD
<b>Project:</b>	SEC.34-T4N-R68W	<b>TVD Reference:</b>	WELL @ 5104.0ft (Original Well Elev)
<b>Reference Site:</b>	SRC Margil 34-34D Pad Sec.34-T4N-R68W	<b>MD Reference:</b>	WELL @ 5104.0ft (Original Well Elev)
<b>Site Error:</b>	0.0ft	<b>North Reference:</b>	True
<b>Reference Well:</b>	SRC Margil 34PD	<b>Survey Calculation Method:</b>	Minimum Curvature
<b>Well Error:</b>	0.0ft	<b>Output errors are at</b>	2.00 sigma
<b>Reference Wellbore</b>	Wellbore #1	<b>Database:</b>	Landmark
<b>Reference Design:</b>	Plan #1 (12-28-11)	<b>Offset TVD Reference:</b>	Offset Datum

Offset Design													Offset Site Error:	0.0ft
Survey Program: 0-MWD													Offset Well Error:	0.0ft
Reference		Offset		Semi Major Axis			Distance							Warning
Measured Depth (ft)	Vertical Depth (ft)	Measured Depth (ft)	Vertical Depth (ft)	Reference (ft)	Offset (ft)	Highside Toolface (°)	Offset Wellbore Centre +N/-S (ft)	+E/-W (ft)	Between Centres (ft)	Between Ellipses (ft)	Minimum Separation (ft)	Separation Factor		
0.0	0.0	0.0	0.0	0.0	0.0	-115.14	-8.4	-17.9	19.8	19.8	0.00	N/A		
100.0	100.0	99.0	99.0	0.1	0.1	-115.14	-8.4	-17.9	19.7	19.5	0.22	88.224		
200.0	200.0	199.0	199.0	0.3	0.3	-115.14	-8.4	-17.9	19.7	19.1	0.67	29.359		
300.0	300.0	299.0	299.0	0.6	0.6	-115.14	-8.4	-17.9	19.7	18.6	1.12	17.592		
400.0	400.0	399.0	399.0	0.8	0.8	-115.14	-8.4	-17.9	19.7	18.2	1.57	12.558		
500.0	500.0	499.0	499.0	1.0	1.0	-115.14	-8.4	-17.9	19.7	17.7	2.02	9.765		
600.0	600.0	599.0	599.0	1.2	1.2	-115.14	-8.4	-17.9	19.7	17.3	2.47	7.988		
700.0	700.0	699.0	699.0	1.5	1.5	-115.14	-8.4	-17.9	19.7	16.8	2.92	6.758		
735.0	735.0	734.0	734.0	1.5	1.5	-115.14	-8.4	-17.9	19.7	16.7	3.08	6.412 CC, ES		
800.0	800.0	798.7	798.7	1.7	1.7	-114.36	-8.3	-18.3	20.0	16.7	3.36	5.959 SF		
900.0	900.0	898.1	898.0	1.9	1.9	-108.77	-7.3	-21.5	22.8	19.0	3.80	5.996		
950.0	950.0	947.7	947.5	2.0	2.0	-104.88	-6.5	-24.4	25.3	21.3	4.02	6.296		
1,000.0	1,000.0	997.1	996.8	2.1	2.1	-44.21	-5.4	-28.1	28.4	24.1	4.23	6.708		
1,100.0	1,099.9	1,095.9	1,095.1	2.3	2.3	-40.29	-2.6	-37.9	35.1	30.5	4.66	7.541		
1,200.0	1,199.7	1,194.4	1,192.6	2.6	2.6	-38.82	1.2	-50.9	42.4	37.3	5.09	8.333		
1,300.0	1,299.1	1,293.1	1,289.8	2.8	2.9	-38.81	5.9	-67.0	50.1	44.5	5.54	9.039		
1,400.0	1,398.2	1,392.9	1,388.0	3.1	3.2	-40.70	10.8	-84.2	55.9	49.9	6.01	9.293		
1,500.0	1,496.6	1,492.7	1,486.3	3.4	3.6	-44.52	15.8	-101.4	59.2	52.7	6.54	9.060		
1,600.0	1,594.4	1,592.5	1,584.5	3.7	3.9	-50.38	20.8	-118.5	60.5	53.4	7.15	8.468		
1,700.0	1,691.5	1,692.1	1,682.5	4.1	4.3	-58.67	25.7	-135.7	60.5	52.6	7.90	7.660		
1,760.9	1,750.2	1,752.7	1,742.0	4.4	4.5	-65.09	28.8	-146.1	60.4	51.9	8.46	7.139		
1,800.0	1,787.6	1,791.4	1,780.2	4.6	4.7	-69.77	30.7	-152.7	60.5	51.6	8.85	6.834		
1,900.0	1,882.7	1,890.3	1,877.4	5.1	5.1	-83.50	35.6	-169.8	62.3	52.3	9.97	6.244		
1,999.5	1,976.2	1,988.2	1,973.7	5.7	5.4	-98.49	40.5	-186.6	67.8	56.7	11.06	6.130		
2,100.0	2,070.0	2,086.6	2,070.6	6.3	5.8	-111.91	45.4	-203.5	78.0	66.1	11.93	6.538		
2,200.0	2,163.4	2,184.6	2,167.0	7.0	6.2	-121.84	50.3	-220.4	91.4	78.8	12.62	7.248		
2,300.0	2,256.7	2,282.6	2,263.4	7.7	6.6	-129.12	55.2	-237.2	106.9	93.7	13.22	8.089		
2,400.0	2,350.1	2,380.6	2,359.8	8.4	7.0	-134.51	60.0	-254.1	123.7	109.9	13.79	8.965		
2,500.0	2,443.5	2,478.6	2,456.3	9.1	7.4	-138.61	64.9	-270.9	141.2	126.8	14.37	9.829		
2,600.0	2,536.8	2,576.6	2,552.7	9.8	7.8	-141.79	69.8	-287.8	159.3	144.4	14.95	10.658		
2,700.0	2,630.2	2,674.6	2,649.1	10.5	8.2	-144.32	74.7	-304.7	177.8	162.3	15.54	11.442		
2,800.0	2,723.6	2,772.6	2,745.5	11.2	8.5	-146.38	79.6	-321.5	196.6	180.4	16.14	12.178		
2,900.0	2,816.9	2,870.6	2,841.9	12.0	8.9	-148.07	84.5	-338.4	215.5	198.8	16.75	12.866		
3,000.0	2,910.3	2,968.7	2,938.3	12.7	9.3	-149.49	89.3	-355.2	234.6	217.3	17.37	13.508		
3,100.0	3,003.7	3,066.7	3,034.8	13.4	9.7	-150.70	94.2	-372.1	253.9	235.9	18.00	14.107		
3,200.0	3,097.0	3,164.7	3,131.2	14.2	10.1	-151.74	99.1	-388.9	273.2	254.6	18.63	14.666		
3,300.0	3,190.4	3,262.7	3,227.6	14.9	10.5	-152.64	104.0	-405.8	292.6	273.3	19.26	15.189		
3,400.0	3,283.7	3,360.7	3,324.0	15.6	10.9	-153.43	108.9	-422.6	312.1	292.2	19.91	15.677		
3,500.0	3,377.1	3,458.7	3,420.4	16.4	11.3	-154.12	113.7	-439.5	331.6	311.0	20.55	16.134		
3,600.0	3,470.5	3,556.7	3,516.9	17.1	11.7	-154.74	118.6	-456.4	351.1	329.9	21.20	16.563		
3,700.0	3,563.8	3,654.7	3,613.3	17.9	12.1	-155.29	123.5	-473.2	370.7	348.9	21.85	16.966		
3,800.0	3,657.2	3,752.7	3,709.7	18.6	12.5	-155.79	128.4	-490.1	390.3	367.8	22.51	17.344		
3,900.0	3,750.6	3,850.7	3,806.1	19.4	12.9	-156.24	133.3	-506.9	410.0	386.8	23.16	17.700		
4,000.0	3,843.9	3,948.7	3,902.5	20.1	13.3	-156.65	138.2	-523.8	429.7	405.8	23.82	18.037		
4,100.0	3,937.3	4,046.7	3,999.0	20.8	13.7	-157.02	143.0	-540.6	449.3	424.9	24.48	18.354		
4,200.0	4,030.7	4,144.7	4,095.4	21.6	14.1	-157.37	147.9	-557.5	469.1	443.9	25.14	18.654		
4,300.0	4,124.0	4,242.7	4,191.8	22.3	14.5	-157.68	152.8	-574.3	488.8	463.0	25.81	18.938		
4,400.0	4,217.4	4,339.5	4,287.0	23.1	14.9	-157.97	157.6	-591.0	508.5	482.0	26.47	19.210		
4,500.0	4,310.7	4,426.0	4,372.4	23.8	15.2	-158.29	161.6	-604.6	529.4	502.4	27.03	19.587		
4,600.0	4,404.1	4,510.5	4,456.1	24.6	15.4	-158.75	164.7	-615.6	552.7	525.2	27.51	20.092		
4,700.0	4,497.5	4,600.0	4,545.1	25.3	15.6	-159.37	167.4	-624.6	578.3	550.4	27.93	20.703		
4,800.0	4,590.8	4,675.8	4,620.7	26.1	15.7	-159.98	169.0	-630.1	606.2	577.8	28.31	21.410		

CC - Min centre to center distance or convergent point, SF - min separation factor, ES - min ellipse separation

<b>Company:</b>	Synergy Resources	<b>Local Co-ordinate Reference:</b>	Well SRC Margil 34PD
<b>Project:</b>	SEC.34-T4N-R68W	<b>TVD Reference:</b>	WELL @ 5104.0ft (Original Well Elev)
<b>Reference Site:</b>	SRC Margil 34-34D Pad Sec.34-T4N-R68W	<b>MD Reference:</b>	WELL @ 5104.0ft (Original Well Elev)
<b>Site Error:</b>	0.0ft	<b>North Reference:</b>	True
<b>Reference Well:</b>	SRC Margil 34PD	<b>Survey Calculation Method:</b>	Minimum Curvature
<b>Well Error:</b>	0.0ft	<b>Output errors are at</b>	2.00 sigma
<b>Reference Wellbore</b>	Wellbore #1	<b>Database:</b>	Landmark
<b>Reference Design:</b>	Plan #1 (12-28-11)	<b>Offset TVD Reference:</b>	Offset Datum

<b>Offset Design</b>												<b>Offset Site Error:</b>	0.0 ft
Survey Program: 0-MWD												<b>Offset Well Error:</b>	0.0 ft
Reference		Offset		Semi Major Axis			Distance						
Measured Depth (ft)	Vertical Depth (ft)	Measured Depth (ft)	Vertical Depth (ft)	Reference (ft)	Offset (ft)	Highside Toolface (°)	Offset Wellbore Centre +N/-S (ft)	+E/-W (ft)	Between Centres (ft)	Between Ellipses (ft)	Minimum Separation (ft)	Separation Factor	Warning
4,900.0	4,684.2	4,756.4	4,701.2	26.8	15.9	-160.71	170.0	-633.8	636.4	607.7	28.65	22.210	
5,000.0	4,777.6	4,835.6	4,780.4	27.6	16.0	-161.48	170.5	-635.4	668.9	639.9	28.96	23.093	
5,100.0	4,870.9	4,925.2	4,869.9	28.4	16.1	-162.36	170.5	-635.5	703.1	673.8	29.26	24.030	
5,200.0	4,964.3	5,018.5	4,963.3	29.1	16.2	-163.20	170.5	-635.5	737.5	707.9	29.57	24.936	
5,210.2	4,973.8	5,028.0	4,972.8	29.2	16.3	-163.28	170.5	-635.5	741.0	711.4	29.61	25.026	
5,300.0	5,058.2	5,112.4	5,057.2	29.8	16.4	-164.11	170.5	-635.5	770.7	740.8	29.92	25.757	
5,400.0	5,153.1	5,207.4	5,152.1	30.3	16.5	-164.88	170.5	-635.5	800.9	770.7	30.25	26.477	
5,500.0	5,249.2	5,303.4	5,248.2	30.8	16.7	-165.53	170.5	-635.5	827.9	797.4	30.57	27.079	
5,600.0	5,346.1	5,400.4	5,345.1	31.2	16.8	-166.06	170.5	-635.5	851.8	820.9	30.89	27.573	
5,700.0	5,443.9	5,498.1	5,442.9	31.5	17.0	-166.49	170.5	-635.5	872.3	841.1	31.19	27.965	
5,800.0	5,542.3	5,596.5	5,541.3	31.9	17.1	-166.84	170.5	-635.5	889.5	858.1	31.47	28.262	
5,900.0	5,641.2	5,695.5	5,640.2	32.1	17.3	-167.10	170.5	-635.5	903.4	871.7	31.73	28.469	
6,000.0	5,740.7	5,794.9	5,739.7	32.4	17.4	-167.30	170.5	-635.5	914.0	882.0	31.97	28.591	
6,100.0	5,840.4	5,894.6	5,839.4	32.5	17.6	-167.43	170.5	-635.5	921.1	888.9	32.17	28.630	
6,200.0	5,940.3	5,994.5	5,939.3	32.6	17.7	-167.50	170.5	-635.5	924.8	892.5	32.35	28.589	
6,259.7	6,000.0	6,054.2	5,999.0	32.7	17.8	135.22	170.5	-635.5	925.4	893.0	32.44	28.526	
6,300.0	6,040.3	6,094.5	6,039.3	32.7	17.9	135.22	170.5	-635.5	925.4	892.9	32.58	28.409	
6,400.0	6,140.3	6,194.5	6,139.3	32.8	18.1	135.22	170.5	-635.5	925.4	892.5	32.92	28.111	
6,500.0	6,240.3	6,294.5	6,239.3	32.9	18.2	135.22	170.5	-635.5	925.4	892.2	33.27	27.818	
6,600.0	6,340.3	6,394.5	6,339.3	33.0	18.4	135.22	170.5	-635.5	925.4	891.8	33.62	27.529	
6,700.0	6,440.3	6,494.5	6,439.3	33.1	18.6	135.22	170.5	-635.5	925.4	891.5	33.97	27.244	
6,800.0	6,540.3	6,594.5	6,539.3	33.2	18.7	135.22	170.5	-635.5	925.4	891.1	34.32	26.963	
6,900.0	6,640.3	6,694.5	6,639.3	33.3	18.9	135.22	170.5	-635.5	925.4	890.8	34.68	26.686	
7,000.0	6,740.3	6,794.5	6,739.3	33.4	19.1	135.22	170.5	-635.5	925.4	890.4	35.04	26.413	
7,100.0	6,840.3	6,894.5	6,839.3	33.5	19.2	135.22	170.5	-635.5	925.4	890.0	35.40	26.144	
7,200.0	6,940.3	6,994.5	6,939.3	33.6	19.4	135.22	170.5	-635.5	925.4	889.7	35.76	25.879	
7,300.0	7,040.3	7,094.5	7,039.3	33.7	19.6	135.22	170.5	-635.5	925.4	889.3	36.12	25.619	
7,400.0	7,140.3	7,194.5	7,139.3	33.8	19.7	135.22	170.5	-635.5	925.4	888.9	36.49	25.362	
7,500.0	7,240.3	7,294.5	7,239.3	33.9	19.9	135.22	170.5	-635.5	925.4	888.6	36.86	25.109	
7,600.0	7,340.3	7,394.5	7,339.3	34.0	20.1	135.22	170.5	-635.5	925.4	888.2	37.23	24.860	
7,700.0	7,440.3	7,494.5	7,439.3	34.1	20.3	135.22	170.5	-635.5	925.4	887.8	37.60	24.614	
7,800.0	7,540.3	7,594.5	7,539.3	34.2	20.5	135.22	170.5	-635.5	925.4	887.5	37.97	24.372	
7,900.0	7,640.3	7,694.5	7,639.3	34.3	20.6	135.22	170.5	-635.5	925.4	887.1	38.35	24.135	
8,000.0	7,740.3	7,794.5	7,739.3	34.4	20.8	135.22	170.5	-635.5	925.4	886.7	38.72	23.900	
8,100.0	7,840.3	7,894.5	7,839.3	34.5	21.0	135.22	170.5	-635.5	925.4	886.3	39.10	23.669	
8,209.7	7,950.0	8,004.2	7,949.0	34.6	21.2	135.22	170.5	-635.5	925.4	885.9	39.51	23.420	

<b>Company:</b>	Synergy Resources	<b>Local Co-ordinate Reference:</b>	Well SRC Margil 34PD
<b>Project:</b>	SEC.34-T4N-R68W	<b>TVD Reference:</b>	WELL @ 5104.0ft (Original Well Elev)
<b>Reference Site:</b>	SRC Margil 34-34D Pad Sec.34-T4N-R68W	<b>MD Reference:</b>	WELL @ 5104.0ft (Original Well Elev)
<b>Site Error:</b>	0.0ft	<b>North Reference:</b>	True
<b>Reference Well:</b>	SRC Margil 34PD	<b>Survey Calculation Method:</b>	Minimum Curvature
<b>Well Error:</b>	0.0ft	<b>Output errors are at</b>	2.00 sigma
<b>Reference Wellbore</b>	Wellbore #1	<b>Database:</b>	Landmark
<b>Reference Design:</b>	Plan #1 (12-28-11)	<b>Offset TVD Reference:</b>	Offset Datum

Reference Depths are relative to WELL @ 5104.0ft (Original Well Elev) Coordinates are relative to: SRC Margil 34PD  
 Offset Depths are relative to Offset Datum Coordinate System is US State Plane 1983, Colorado Northern Zone  
 Central Meridian is -105.500000 ° Grid Convergence at Surface is: 0.33°



<b>Company:</b>	Synergy Resources	<b>Local Co-ordinate Reference:</b>	Well SRC Margil 34PD
<b>Project:</b>	SEC.34-T4N-R68W	<b>TVD Reference:</b>	WELL @ 5104.0ft (Original Well Elev)
<b>Reference Site:</b>	SRC Margil 34-34D Pad Sec.34-T4N-R68W	<b>MD Reference:</b>	WELL @ 5104.0ft (Original Well Elev)
<b>Site Error:</b>	0.0ft	<b>North Reference:</b>	True
<b>Reference Well:</b>	SRC Margil 34PD	<b>Survey Calculation Method:</b>	Minimum Curvature
<b>Well Error:</b>	0.0ft	<b>Output errors are at</b>	2.00 sigma
<b>Reference Wellbore</b>	Wellbore #1	<b>Database:</b>	Landmark
<b>Reference Design:</b>	Plan #1 (12-28-11)	<b>Offset TVD Reference:</b>	Offset Datum

Reference Depths are relative to WELL @ 5104.0ft (Original Well Elev) Coordinates are relative to: SRC Margil 34PD  
Offset Depths are relative to Offset Datum Coordinate System is US State Plane 1983, Colorado Northern Zone  
Central Meridian is -105.500000 ° Grid Convergence at Surface is: 0.33°

