
BILL BARRETT CORPORATION E-BILL

**KAUFMAN 31A-25-692
MAMM CREEK
Garfield County , Colorado**

Cement Surface Casing
10-Dec-2011

Post Job Report

The Road to Excellence Starts with Safety

Sold To #: 343492	Ship To #: 2894955	Quote #:	Sales Order #: 9112138
Customer: BILL BARRETT CORPORATION E-BILL	Customer Rep: Lauer, Casey		
Well Name: KAUFMAN	Well #: 31A-25-692	API/UWI #: 05-045-21148	
Field: MAMM CREEK	City (SAP): UNKNOWN	County/Parish: Garfield	State: Colorado
Lat: N 39.502 deg. OR N 39 deg. 30 min. 8.586 secs.	Long: W 107.618 deg. OR W -108 deg. 22 min. 53.843 secs.		
Contractor: PROPETRO	Rig/Platform Name/Num: PROPETRO		
Job Purpose: Cement Surface Casing			
Well Type: Development Well	Job Type: Cement Surface Casing		
Sales Person: FLING, MATTHEW	Srvc Supervisor: PHILLIPS, MARK	MBU ID Emp #: 445272	

Job Personnel

HES Emp Name	Exp Hrs	Emp #	HES Emp Name	Exp Hrs	Emp #	HES Emp Name	Exp Hrs	Emp #
JENSEN, JESSE Robert	14	478774	KEANE, JOHN Donovan	14	486519	PHILLIPS, MARK Bejar	14	445272

Equipment

HES Unit #	Distance-1 way	HES Unit #	Distance-1 way	HES Unit #	Distance-1 way	HES Unit #	Distance-1 way
10784064	120 mile	10951249	120 mile	11006314	120 mile	11360871	120 mile
11542767	120 mile						

Job Hours

Date	On Location Hours	Operating Hours	Date	On Location Hours	Operating Hours	Date	On Location Hours	Operating Hours
12-10-2011	14	2						

TOTAL Total is the sum of each column separately

Job

Formation Name	Job	Job Times
Formation Depth (MD) Top	Bottom	Called Out
Form Type	BHST	On Location
Job depth MD	750. ft	Job Depth TVD
Water Depth	Wk Ht Above Floor	2. ft
Perforation Depth (MD) From	To	Job Started
		Job Completed
		Departed Loc

Well Data

Description	New / Used	Max pressure psig	Size in	ID in	Weight lbm/ft	Thread	Grade	Top MD ft	Bottom MD ft	Top TVD ft	Bottom TVD ft
OPEN HOLE				12.375				.	750.		
SURFACE CASNG	New		9.625	8.921	36.		J-55	.	731.5		

Sales/Rental/3rd Party (HES)

Description	Qty	Qty uom	Depth	Supplier
PLUG,CMTG,TOP,9 5/8,HWE,8.16 MIN/9.06 MA	1	EA		
R/A DENSOMETER W/CHART RECORDER,/JOB,ZI	1	JOB		
ADC (AUTO DENSITY CTRL) SYS, /JOB,ZI	1	JOB		
PORT. DATA ACQUIS. W/OPTICEM RT W/HES	1	EA		

Tools and Accessories

Type	Size	Qty	Make	Depth	Type	Size	Qty	Make	Depth	Type	Size	Qty	Make
Guide Shoe					Packer					Top Plug	9.625	1	HES
Float Shoe					Bridge Plug					Bottom Plug			
Float Collar				687.72	Retainer					SSR plug set			
Insert Float										Plug Container	9.625	1	HES
Stage Tool										Centralizers			

Miscellaneous Materials

Gelling Agt	Conc	Surfactant	Conc	Acid Type	Qty	Conc	%
Treatment Fld	Conc	Inhibitor	Conc	Sand Type	Size		Qty

Fluid Data									
Stage/Plug #: 1									
Fluid #	Stage Type	Fluid Name	Qty	Qty uom	Mixing Density lbm/gal	Yield ft ³ /sk	Mix Fluid Gal/sk	Rate bbl/min	Total Mix Fluid Gal/sk
1	WATER SPACER		20.00	bbl	8.34	.0	.0	4.0	
2	Lead Cement	VERSACEM (TM) SYSTEM (452010)	120.0	sacks	12.3	2.38	13.77	6.0	13.77
	0.25 lbm	POLY-E-FLAKE (101216940)							
	13.77 Gal	FRESH WATER							
3	Tail Cement	SWIFTCES (TM) SYSTEM (452990)	120.0	sacks	14.2	1.43	6.85	6.0	6.85
	0.25 lbm	POLY-E-FLAKE (101216940)							
	6.85 Gal	FRESH WATER							
4	DISPLACEMENT		53.20	bbl	8.4			6.0	
Calculated Values		Pressures		Volumes					
Displacement	53.2	Shut In: Instant		Lost Returns	0	Cement Slurry	81	Pad	
Top Of Cement	SURFACE	5 Min		Cement Returns	30	Actual Displacement	53.2	Treatment	
Frac Gradient		15 Min		Spacers	20	Load and Breakdown		Total Job	154
Rates									
Circulating	AIR	Mixing	6	Displacement	6	Avg. Job	6		
Cement Left In Pipe	Amount	43.8 ft	Reason	Shoe Joint					
Frac Ring # 1 @	ID	Frac ring # 2 @	ID	Frac Ring # 3 @	ID	Frac Ring # 4 @	ID		
The Information Stated Herein Is Correct				Customer Representative Signature					

The Road to Excellence Starts with Safety

Sold To #: 343492	Ship To #: 2894955	Quote #:	Sales Order #: 9112138
Customer: BILL BARRETT CORPORATION E-BILL		Customer Rep: Lauer, Casey	
Well Name: KAUFMAN	Well #: 31A-25-692	API/UWI #: 05-045-21148	
Field: MAMM CREEK	City (SAP): UNKNOWN	County/Parish: Garfield	State: Colorado
Legal Description:			
Lat: N 39.502 deg. OR N 39 deg. 30 min. 8.586 secs.		Long: W 107.618 deg. OR W -108 deg. 22 min. 53.843 secs.	
Contractor: PROPETRO		Rig/Platform Name/Num: PROPETRO	
Job Purpose: Cement Surface Casing			Ticket Amount:
Well Type: Development Well		Job Type: Cement Surface Casing	
Sales Person: FLING, MATTHEW		Srvc Supervisor: PHILLIPS, MARK	MBU ID Emp #: 445272

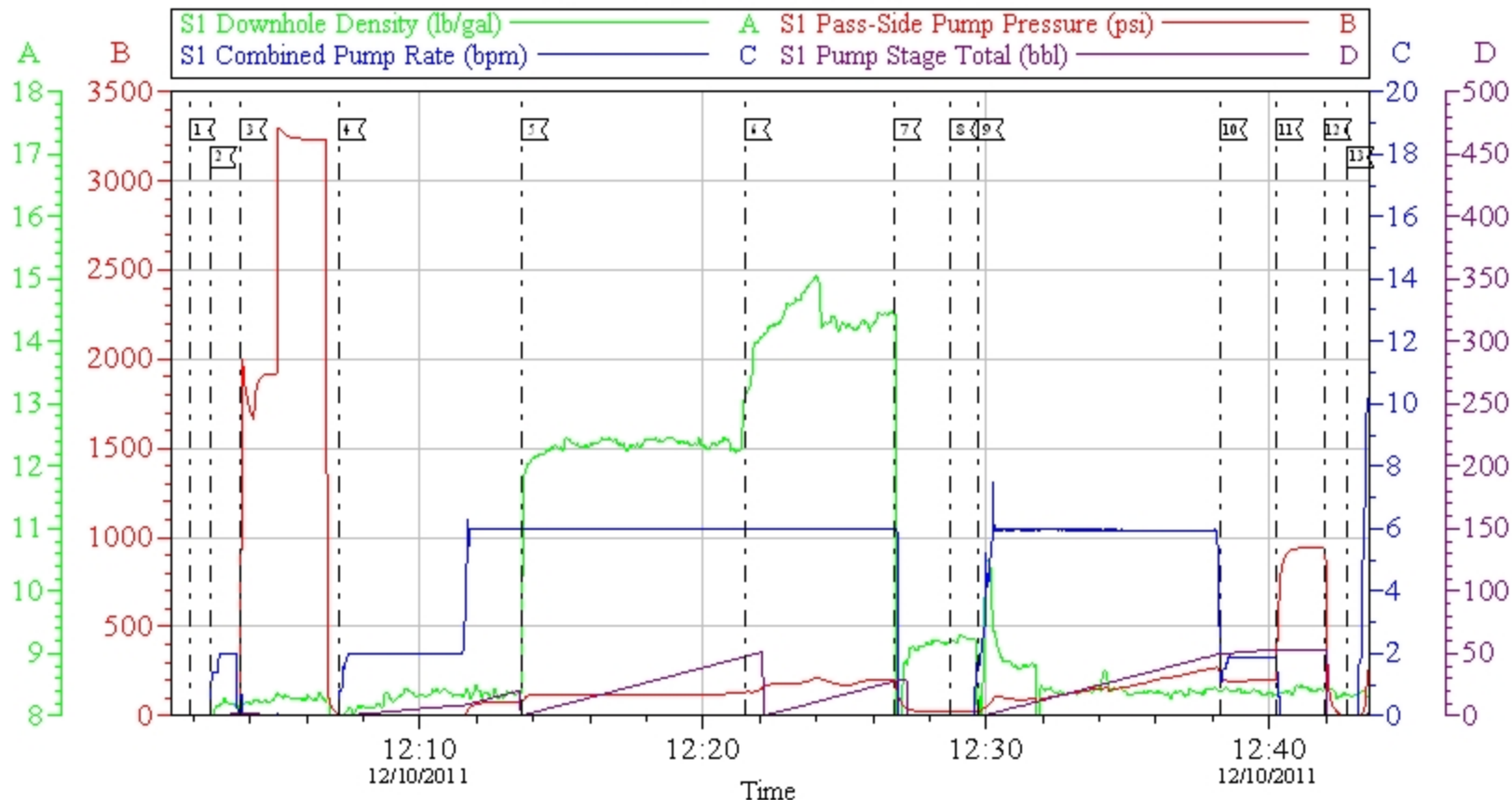
Activity Description	Date/Time	Cht #	Rate bbl/min	Volume bbl		Pressure psig		Comments
				Stage	Total	Tubing	Casing	
Call Out	12/10/2011 00:00							BULK TRUCK DRIVER WILL BE ROUND TRIPPING FOR CEMENT POST EACH JOB. SUPERVISOR AND CREW WENT HOME TO SHOWER.
Pre-Convoy Safety Meeting	12/10/2011 00:30							BULK DRIVER ONLY
Arrive At Loc	12/10/2011 02:30							RIG CREW DRILLING
Assessment Of Location Safety Meeting	12/10/2011 02:35							ALL HES EMPLOYEES, LOCATION ASSESED BEFORE START OF EACH JOB.
Rig-Up Equipment	12/10/2011 02:45							1 HT-400 CEMENT PUMP, 1 660FT3 BULK TRUCK, 1 9.625" SCREW ON PLUG CONTAINER
Pre-Job Safety Meeting	12/10/2011 11:30							ALL HES EMPLOYEES, RIG CREW, COMPANY REP, 3RD PARTY VENDORS
Start Job	12/10/2011 12:01							TD:750 FT TP:731.52 FT SJ:43.8 , OPEN HOLE: 12.375" CASING: 9.625", J55 8RD, 36 LB/FT
Pump Water	12/10/2011 12:02		1.5	2			20.0	FRESH WATER
Pressure Test	12/10/2011 12:03		0.5			3400.0		NO LEAKS
Pump Spacer 1	12/10/2011 12:07		4	20			20.0	FRESH WATER

Activity Description	Date/Time	Cht #	Rate bbl/min	Volume bbl		Pressure psig		Comments
				Stage	Total	Tubing	Casing	
Pump Lead Cement	12/10/2011 12:13		6	51			120.0	120SKS VERSACEM MIXED @ 12.3PPG, 2.38FT3/SK, 13.75GALS/SK, WEIGHED VIA PRESSURE BALANCED MUD SCALES, WET AND DRY SAMPLES SUBMITTED.
Pump Tail Cement	12/10/2011 12:21		6	31			210.0	120SKS SWIFTCM MIXED @ 14.2PPG, 1.43FT3/SK, 6.88GALS/SK, WEIGHED VIA PRESSURE BALANCED MUD SCALES, WET AND DRY SAMPLES SUBMITTED, RETURNS NOTED TO SURFACE WITH 20 BBLS AWAY ON TAIL CMT.
Shutdown	12/10/2011 12:26							
Drop Plug	12/10/2011 12:28							PLUG LAUNCHED
Pump Displacement	12/10/2011 12:29		6	53.2			225.0	FRESH WATER
Cement Returns to Surface	12/10/2011 12:34							30 BBLS CMT RETURNED TO SURFACE
Slow Rate	12/10/2011 12:38		2.5	43			200.0	SLOW RATE 10BBL PRIOR TO CALCULATED DISPLACEMENT
Bump Plug	12/10/2011 12:40		2.5	53.2			980.0	PLUG LANDED
Check Floats	12/10/2011 12:41							FLOATS HELD
End Job	12/10/2011 12:42							THANK YOU FOR USING HALLIBURTON ENERGY SERVICES FROM MARK PHILLIPS AND CREW
Post-Job Safety Meeting (Pre Rig-Down)	12/10/2011 12:45							ALL HES EMPLOYEES

Activity Description	Date/Time	Cht #	Rate bbl/ min	Volume bbl		Pressure psig		Comments
				Stage	Total	Tubing	Casing	
Rig-Down Equipment	12/10/2011 12:55							PUMP TRUCK BLOWN DOWN POST JOB.
Pre-Convoy Safety Meeting	12/10/2011 13:00							ALL HES EMPLOYEES, MARK P, JESSE J, JOHN K ON LOCATION DARREN WALPOLE WILL BE ROUND TRIPPING BULK TRUCK
Crew Leave Location	12/10/2011 14:00							TO GET LUNCH

BILL BARRETT CORP

KAUFMAN 31A-25-692 SURFACE



Local Event Log

1 START JOB	12:01:51	2 FILL LINES	12:02:34	3 PRESSURE TEST	12:03:40
4 EDC SPACER	12:07:09	5 LEAD CEMENT	12:13:37	6 TAIL CEMENT	12:21:28
7 SHUT DOWN	12:24:44	8 DROP PLUG	12:28:45	9 START DISPLACEMENT	12:29:41
10 SLOW RATE	12:38:17	11 BUMP PLUG	12:40:14	12 CHECK FLOATS	12:41:38
13 END JOB	12:42:47				

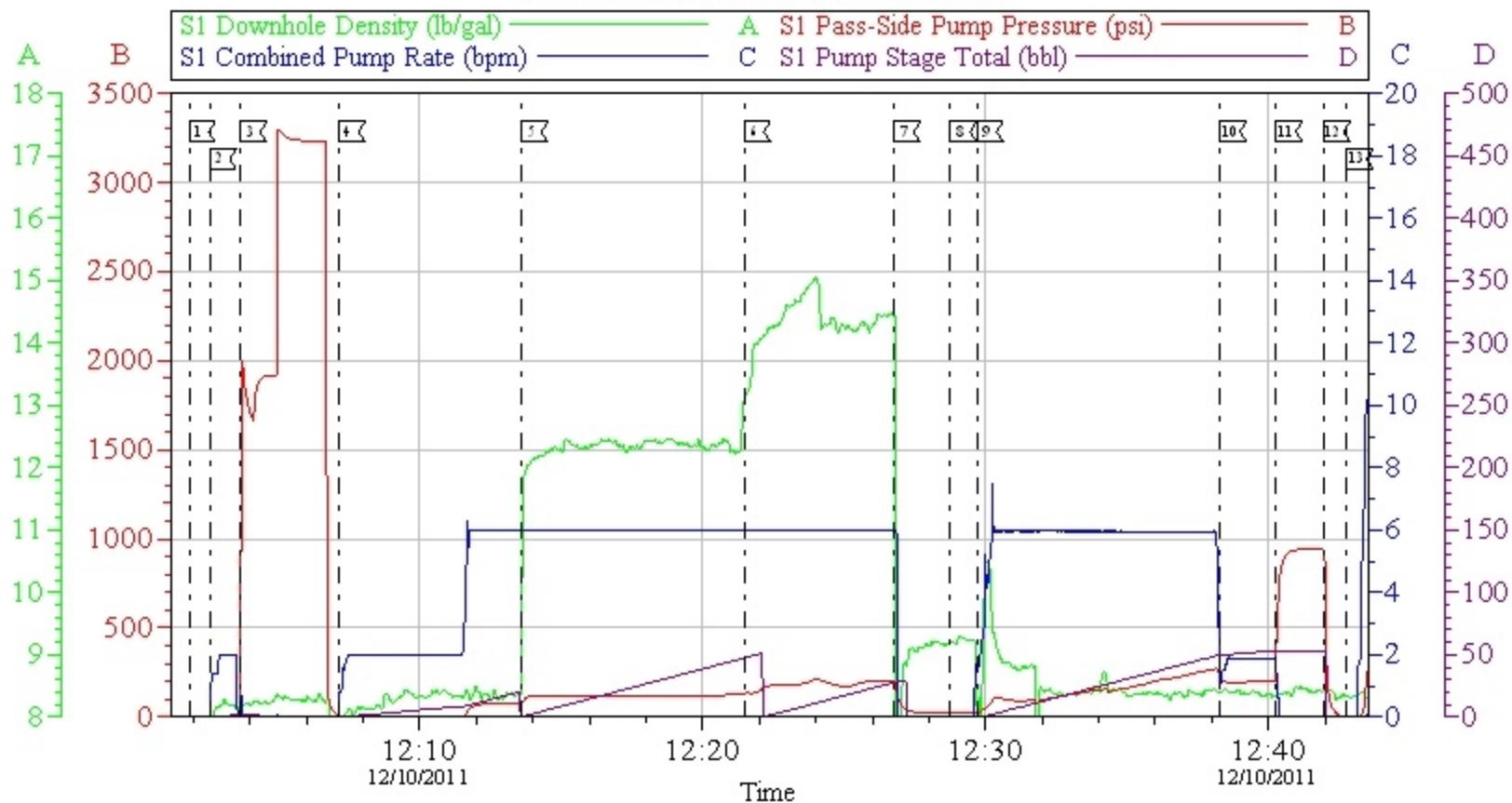
Customer: BILL BARRETT
Well Description: KAUFMAN 31A-25-692
Company Rep: CASEY LAUER

Job Date: 10-Dec-2011
Job Type: SURFACE
Cement Supervisor: MARK PHILLIPS

Sales Order #: 9112138
ADC Used: YES
Elite #:1 JOHN KEANE

OptiCem v6.4.10
10-Dec-11 13:40

BILL BARRETT CORP
KAUFMAN 31A-25-692 SURFACE



HALLIBURTON

Water Analysis Report

Company: BILL BARRETT

Submitted by: MARK PHILLIPS

Attention: LAB

Lease KAUFMAN

Well # 31A-25-692

Date: 12/10/2011

Date Rec.: 12/10/2011

S.O.# 9112138

Job Type: SURFACE

Specific Gravity	MAX	1
pH	8	7
Potassium (K)	5000	400 Mg / L
Calcium (Ca)	500	250 Mg / L
Iron (FE2)	300	0 Mg / L
Chlorides (Cl)	3000	200 Mg / L
Sulfates (SO ₄)	1500	150 Mg / L
Chlorine (Cl ₂)		0 Mg / L
Temp	40-80	42 Deg
Total Dissolved Solids		850 Mg / L

Respectfully: MARK PHILLIPS

Title: CEMENTING SUPERVISOR

Location: Grand Junction, CO

NOTICE:

This report is limited to the described sample tested. Any person using or relying on this report agrees that Halliburton shall not be liable for any loss or damage whether due to act or omission resulting from such report or its use.

Sales Order #: 9112138	Line Item: 10	Survey Conducted Date: 12/10/2011
Customer: BILL BARRETT CORPORATION E-BILL		Job Type (BOM): CMT SURFACE CASING BOM
Customer Representative: CASEY ,LAUER		API / UWI: (leave blank if unknown) 05-045-21148
Well Name: KAUFMAN		Well Number: 31A-25-692
Well Type: Development Well	Well Country: United States of America	
H2S Present: No	Well State: Colorado	Well County: Garfield

Dear Customer,

We hope that you were satisfied with the service quality of this job performed by Halliburton. It is the aim of our management and service personnel to deliver equipment and service of a standard unmatched in the service sector of the energy industry.

Please take the time to let us know if our performance met with your satisfaction. Please be as critical as possible to ensure we constantly improve our service. Your comments are of great value to us and are intended for the exclusive use of Halliburton.

CUSTOMER SATISFACTION SURVEY

CATEGORY	CUSTOMER SATISFACTION RESPONSE	
Survey Conducted Date	The date the survey was conducted	12/10/2011
Survey Interviewer	The survey interviewer is the person who initiated the survey.	MARK PHILLIPS (HB13261)
Customer Participation	Did the customer participate in this survey? (Y/N)	Yes
Customer Representative	Enter the Customer representative name	CASEY ,LAUER
HSE	Was our HSE performance satisfactory? Circle Y or N	Yes
Equipment	Were you satisfied with our Equipment? Circle Y or N	Yes
Personnel	Were you satisfied with our people? Circle Y or N	Yes
Customer Comment	Customer's Comment	

CUSTOMER SIGNATURE

Sales Order #: 9112138	Line Item: 10	Survey Conducted Date: 12/10/2011
Customer: BILL BARRETT CORPORATION E-BILL		Job Type (BOM): CMT SURFACE CASING BOM
Customer Representative: CASEY ,LAUER		API / UWI: (leave blank if unknown) 05-045-21148
Well Name: KAUFMAN		Well Number: 31A-25-692
Well Type: Development Well	Well Country: United States of America	
H2S Present: No	Well State: Colorado	Well County: Garfield

KEY PERFORMANCE INDICATORS

General	
Survey Conducted Date The date the survey was conducted	12/10/2011

Cementing KPI Survey	
Type of Job Select the type of job. (Cementing or Non-Cementing)	0
Select the Maximum Deviation range for this Job What is the highest deviation for the job you just completed? This may not be the maximum well deviation.	Vertical
Total Operating Time (hours) Total Operating Hours Including Rig-up, Pumping, Rig-down. Enter in decimal format.	2
HSE Incident, Accident, Injury HSE Incident, Accident, Injury. This should be recordable incidents only.	No
Was the job purpose achieved? Was the job delivered correctly as per customer agreed design?	Yes
Operating Hours (Pumping Hours) Total number of hours pumping fluid on this job. Enter in decimal format.	1
Customer Non-Productive Rig Time (hrs) Lost time due to Halliburton in the start, execution, or completion of an ordered service or product, or delays in a follow-on service. Enter in decimal format. 0 if none.	0
Type of Rig Classification Job Was Performed Type Of Rig (classification) Job Was Performed On	Drilling Rig (Portable)
Number Of JSAs Performed Number Of Jsas Performed	6
Number of Unplanned Shutdowns Unplanned shutdown is when injection stops for any period of time.	0
Was this a Primary Cement Job (Yes / No)	Yes

Sales Order #: 9112138	Line Item: 10	Survey Conducted Date: 12/10/2011
Customer: BILL BARRETT CORPORATION E-BILL		Job Type (BOM): CMT SURFACE CASING BOM
Customer Representative: CASEY ,LAUER		API / UWI: (leave blank if unknown) 05-045-21148
Well Name: KAUFMAN		Well Number: 31A-25-692
Well Type: Development Well	Well Country: United States of America	
H2S Present: No	Well State: Colorado	Well County: Garfield

Primary Cement Job= Casing job, Liner job, or Tie-back job.	
Did We Run Wiper Plugs? Did We Run Top And Bottom Casing Wiper Plugs?	Top
Mixing Density of Job Stayed in Designed Density Range (0-100%) Density Range defined as +/- .20 ppg. Calculation: Total BBLs cement mixed at designed density divided by total BBLs of cement multiplied by 100	98
Was Automated Density Control Used? Was Automated Density Control (ADC) Used ?	Yes
Pump Rate (percent) of Job Stayed At Designed Pump Rate Pump Rate range defined as +/- 1bbl/min. Calculation: Total BBLs of fluid pumped at the designed rate divided by Total BBLs of fluid pumped, multiplied by 100	95
Nbr of Remedial Sqz Jobs Rqd - Competition Number Of Remedial Squeeze Jobs Required After Primary Job Performed By Competition	0
Nbr of Remedial Plug Jobs Rqd - HES Number Of Remedial Plug Jobs Needed After Primary Plug Pumped By HES	0
Nbr of Remedial Sqz Jobs Rqd - HES Number Of Remedial Squeeze Jobs Required After Primary Job Performed By HES	0