

CDOW KP 32-26

KP 432-26, KP 32-26, KP 542-26, KP 342-26, KP 541-26,
KP 22-26, KP 421-26, KP 431-26, KP 31-26, KP 341-26

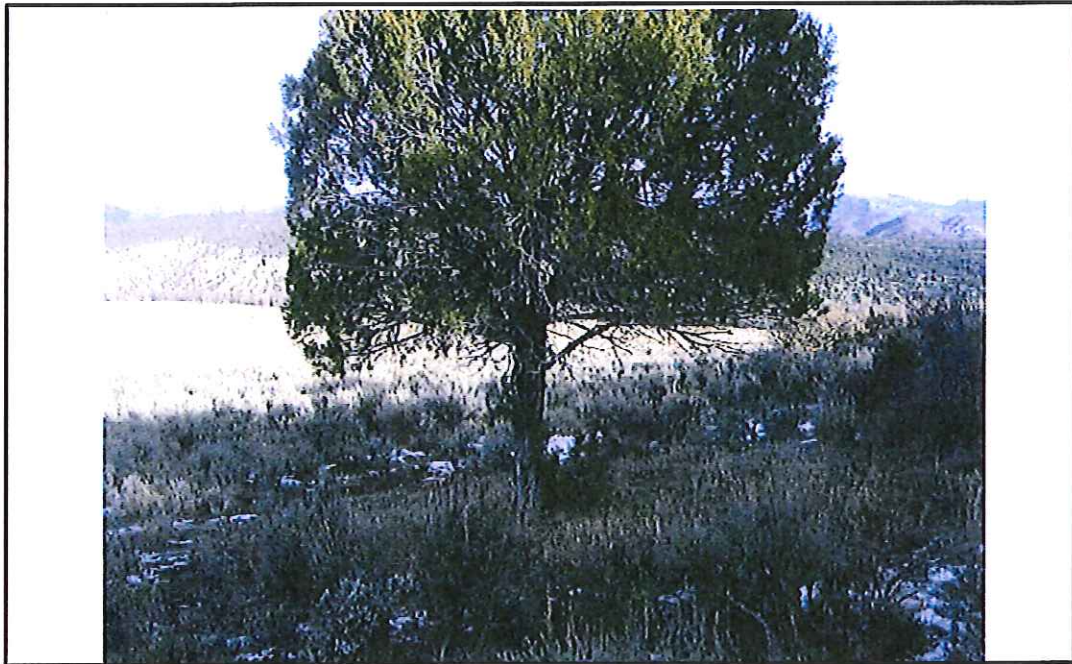


PHOTO: VIEW FROM PAD CENTER

CAMERA ANGLE: North



PHOTO: VIEW FROM PAD CENTER

CAMERA ANGLE: South

WELL LOCATION PLAT Prepared for:
WPXENERGY Rocky Mountain, LLC

SW1/4NE1/4, NW1/4SE1/4, SECTION 26
T. 6 S., R. 91 W. of the 6th. P.M.
GARFIELD COUNTY, COLORADO

136 East Third Street
Rifle, Colorado 81650
Ph. (970) 625-2720
Fax (970) 625-2773



PHOTO DATE: 12/12/11
TAKEN BY: cws
DRAWN BY: cws
SHEET: 1 of 3
PROJECT: Williams Kokopelli

CDOW KP 32-26

KP 432-26, KP 32-26, KP 542-26, KP 342-26, KP 541-26,
KP 22-26, KP 421-26, KP 431-26, KP 31-26, KP 341-26



PHOTO: VIEW FROM PAD CENTER

CAMERA ANGLE: East



PHOTO: VIEW FROM PAD CENTER

CAMERA ANGLE: West

WELL LOCATION PLAT Prepared for:
WPXENERGY Rocky Mountain, LLC

SW1/4NE1/4, NW1/4SE1/4, SECTION 26
T. 6 S., R. 91 W. of the 6th. P.M.
GARFIELD COUNTY, COLORADO

136 East Third Street
Rifle, Colorado 81650
Ph. (970) 625-2720
Fax (970) 625-2773



PHOTO DATE: 12/12/11
TAKEN BY: cws
DRAWN BY: cws
SHEET: 2 of 3
PROJECT: Williams Kokopelli

CDOW KP 32-26

KP 432-26, KP 32-26, KP 542-26, KP 342-26, KP 541-26,
KP 22-26, KP 421-26, KP 431-26, KP 31-26, KP 341-26



PHOTO: VIEW FROM PAD CENTER

General Access



PHOTO: VIEW FROM PAD CENTER

Over All Area

WELL LOCATION PLAT Prepared for:
WPXENERGY Rocky Mountain, LLC

SW1/4NE1/4, NW1/4SE1/4, SECTION 26
T. 6 S., R. 91 W. of the 6th. P.M.
GARFIELD COUNTY, COLORADO

136 East Third Street
Rifle, Colorado 81650
Ph. (970) 625-2720
Fax (970) 625-2773



PHOTO DATE: 12/12/11
TAKEN BY: cws
DRAWN BY: cws
SHEET: 3 of 3
PROJECT: Williams Kokopelli