

KPK
K.P. Kauffman Co., Inc.

Well: Glenn Horton #2
L. Desc: se se 24-2N-67W **County, State:** Weld, CO
Field: Spindle

API #: 05-123-08937

DATE: 6/30/2008
Elevation KB 4872
Elevation GL 4864
KB Meas: 8

Formation: Sussex

Top perf: 4510

Bot perf: 4552

Sfc Casing: 8-5/8" 24# 720
Prod Casing: 4.5" 10.5# 4700
CIBP: 4460
PBTD: 4651
TD: 4700

Diagram of Current Status 6/30/08:

Rig operations conducted by Kauffman Well Service Rig #2

6/25/08

Set 4.5" CIBP at 4460 KB. Dump-bailed 2 sks cement (J-W Wireline).
Ran tubing to 4200 and reverse-circulated casing clean.
POH tubing.

6/26/08

Cut casing collar at 1017 KB (J-W Wireline).
Pulled casing 6 ft. Circulate from 1011 to lined pit.

6/30/08

Moved in Cementer's Well Service.

J. Precup, COGCC, is on location to witness all plugging.

Mixed and pumped 50 sks Class G w/ 2% CaCl at 15.4 ppg down casing.
Balanced cement at 1011.

Pulled and laid down 6 jts casing, reset at 760 (approved by J. Precup).

Mixed and pumped 80 sks Class G w/ 2% CaCl at 15.4 ppg down casing.
Balanced cement at 760.

Pulled and laid down remaining 4.5" casing (23 jts total).

WOC 2.5 hrs.

Ran bull-plugged 2-3/8" tubing and tagged cement top at 659. POH tubing.

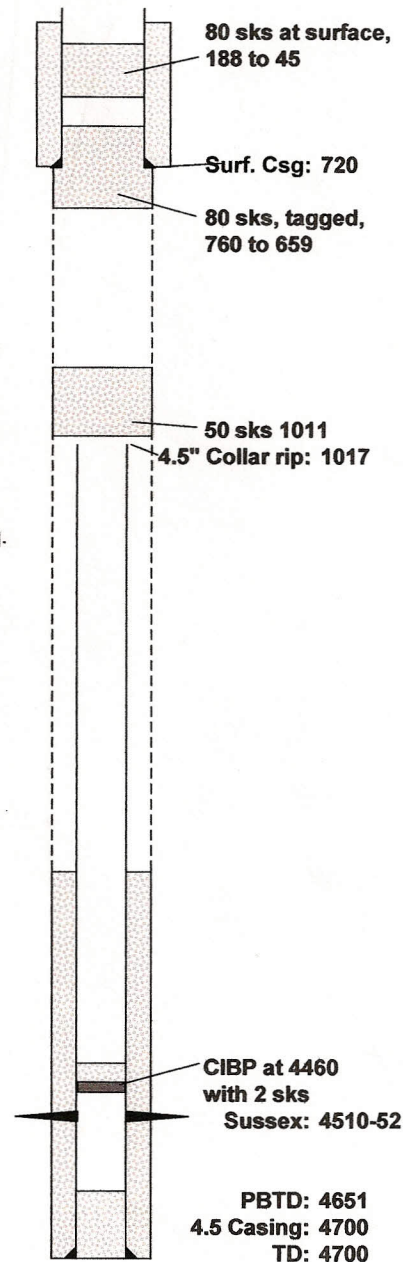
Reset tubing at 188.

Mixed and pumped 80 sks Class G w/ 2% CaCl at 15.4 ppg, to surface.

Set tubing at 45 ft from surface, and circulated casing clean.

Final grade will be appx. 45 ft below current GL. Surface casing will
be cut off and capped by KPK at a future date when land owner has
excavated the surrounding fill.

Precedure approved by J. Precup.



Rick Ohlemeier
Manager, Completion