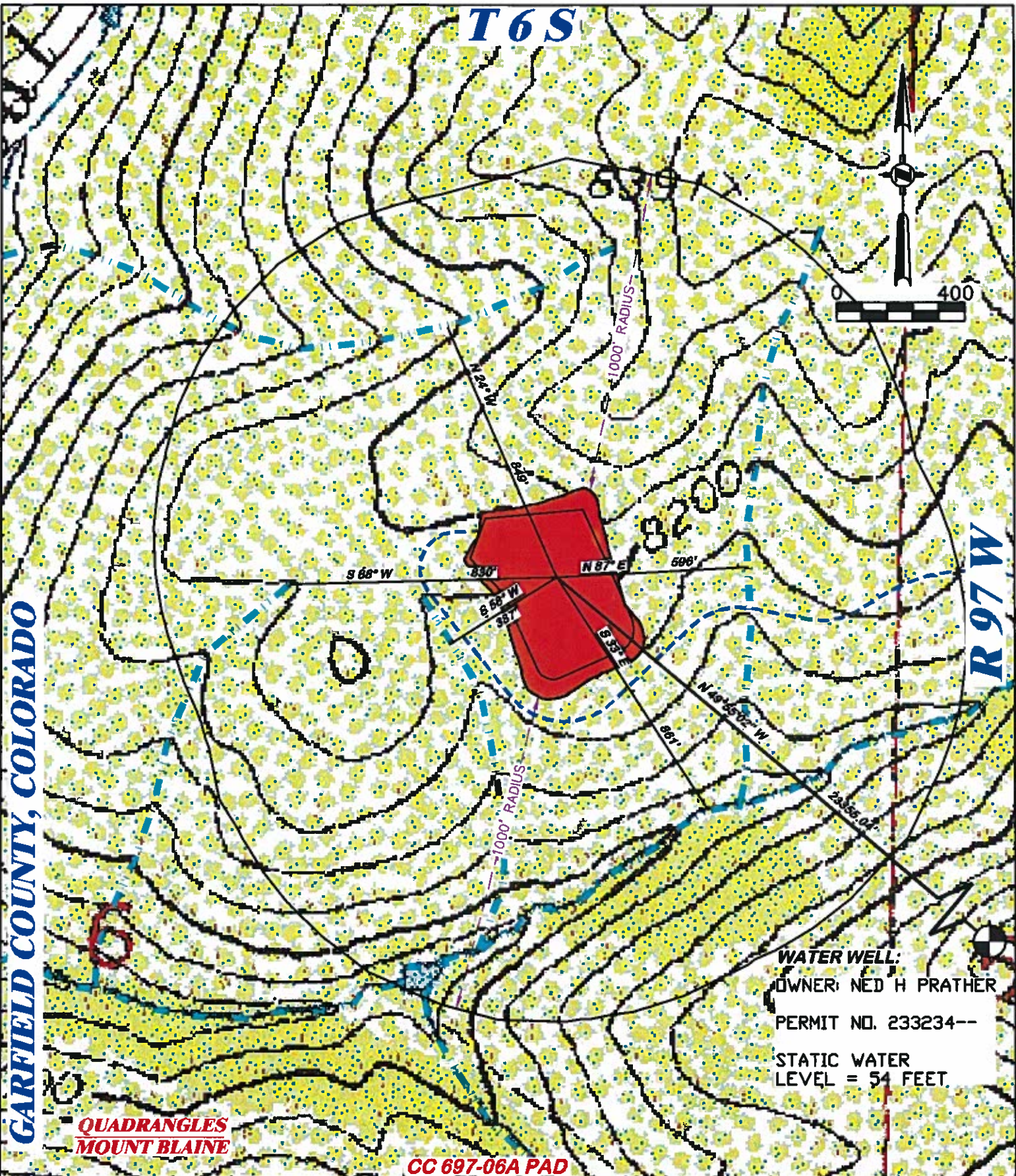


GARFIELD COUNTY, COLORADO

**RIFFIN & ASSOCIATES, INC.**

(807) 862-5028

1414 ELK ST., ROCK SPRINGS, WY 82901

DRAWN: 3/3/11 - DEH

SCALE: 1" = 400'

REVISED: 01/12/12 - TCM

DRG JOB No. 18236**REVISED PAD****EXHIBIT 4B**

HYDROLOGY MAP

OXY USA WTP LP

**CASCADE CREEK 697-05-18A, 18B, 26, 34A, 34B, 06-03A,
03B, 05A, 05B, 07, 08, 14A, 14B, 16A, 16B, 22A, 22B, 24A,
24B, 30A, 30B,**

**LOT 15, NE SECTION 6, T. 6 S., R. 97 W., 6th P.M.,
GARFIELD COUNTY, COLORADO**

NATURAL CREEK/DRAW ■ ■ ■ ■ ■ **PROPOSED ACCESS** - - - - -