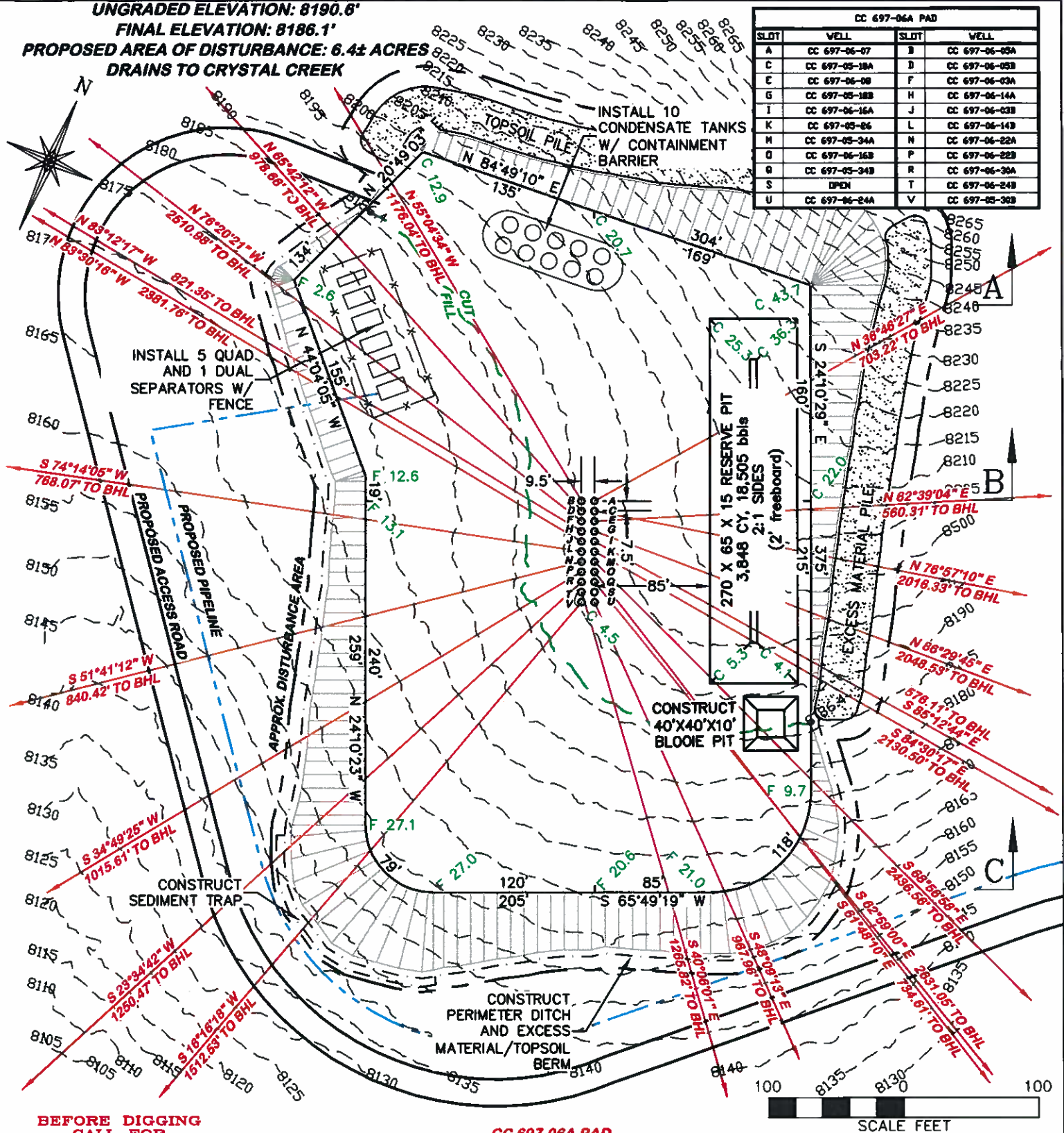


UNGRADED ELEVATION: 8190.6'
 FINAL ELEVATION: 8186.1'
 PROPOSED AREA OF DISTURBANCE: 6.4± ACRES
 DRAINS TO CRYSTAL CREEK



DRG RIFFIN & ASSOCIATES, INC.
 1414 ELK ST., ROCK SPRINGS, WY 82901

(307) 362-5028

DRAWN: 3/3/11 - DEH

SCALE: 1" = 100'

REVISED: 01/13/12 - TCM

DRG JOB No. 18236

REVISED PAD

EXHIBIT 2

UNGRADED ELEVATION: 8190.6'

FINAL ELEVATION: 8186.1'

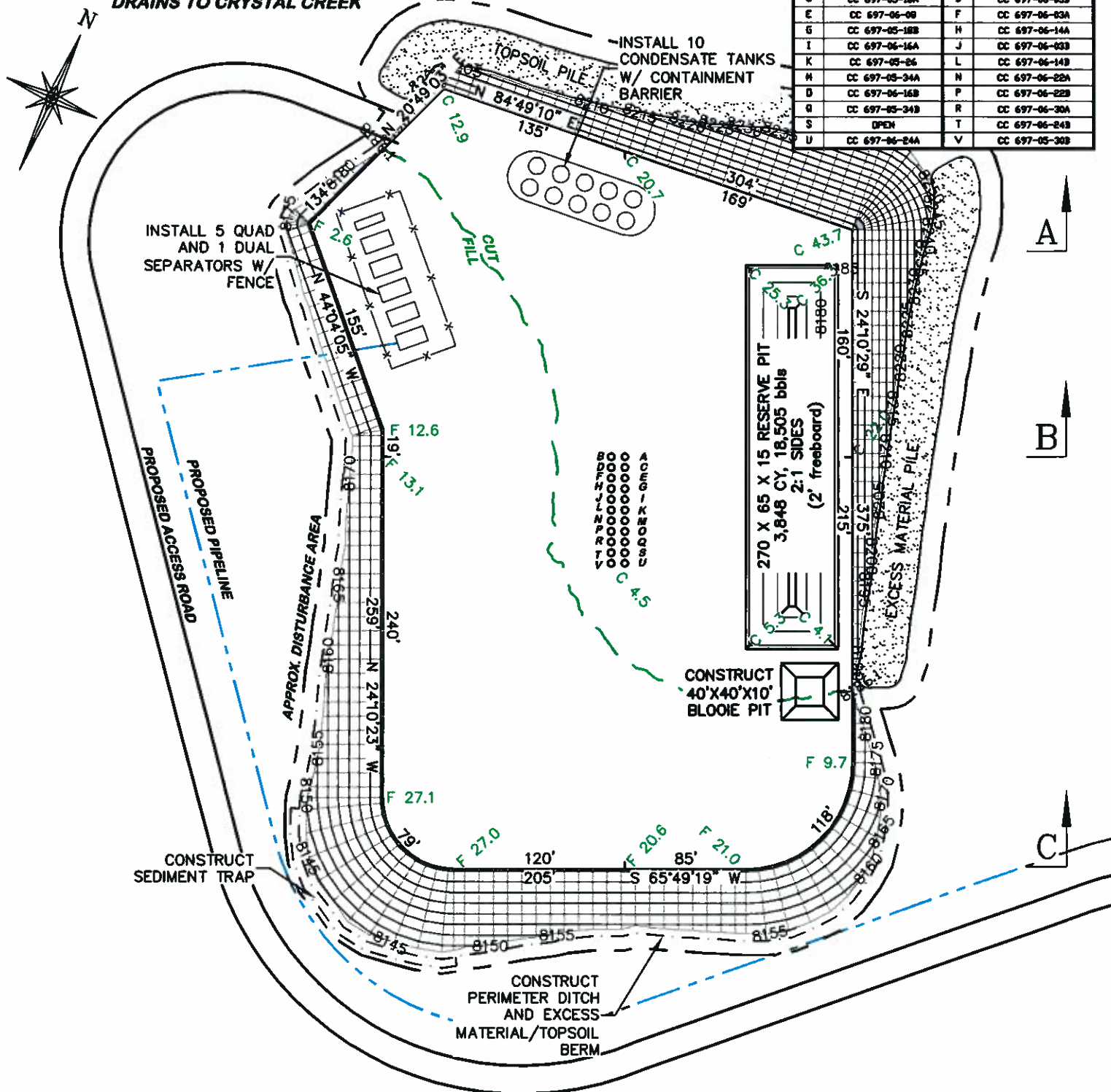
PROPOSED AREA OF DISTURBANCE: 6.4± ACRES

DRAINS TO CRYSTAL CREEK

DESIGN CONTOURS

CC 697-06A PAD

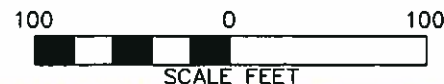
SLOT	WELL	SLOT	WELL
A	CC 697-06-07	B	CC 697-06-05A
C	CC 697-05-18A	D	CC 697-06-05B
E	CC 697-06-08	F	CC 697-06-03A
G	CC 697-05-18B	H	CC 697-06-14A
I	CC 697-06-16A	J	CC 697-06-03B
K	CC 697-05-26	L	CC 697-06-14B
M	CC 697-05-34A	N	CC 697-06-22A
O	CC 697-06-16B	P	CC 697-06-22B
Q	CC 697-05-34B	R	CC 697-06-30A
S	OPEN	T	CC 697-06-24B
U	CC 697-06-24A	V	CC 697-05-30B



**BEFORE DIGGING
CALL FOR
UTILITY LINE LOCATION**

NOTE: THE EARTH QUANTITIES ON THIS DRAWING ARE ESTIMATED AND THE USE OF SAID QUANTITIES IS AT THE RESPONSIBILITY OF THE USER.

CC 697-06A PAD



RIFFIN & ASSOCIATES, INC.

1414 ELK ST., ROCK SPRINGS, WY 82901

(307) 362-5028

DRAWN: 3/3/11 - DEH

SCALE: 1" = 100'

REVISED: 01/13/12 - TCM

DRG JOB No. 18236

REVISED PAD

EXHIBIT 2B

CONSTRUCTION LAYOUT DRAWING 3 OF 5

**DESIGN CONTOURS
OXY USA WTP LP**

CASCADE CREEK 697-05-18A, 18B, 26, 34A, 34B, 06-03A, 03B, 05A, 05B, 07, 08, 14A, 14B, 16A, 16B, 22A, 22B, 24A, 24B, 30A, 30B, LOT 15, NE SECTION 6, T. 6 S., R. 97 W., 6th P.M., GARFIELD COUNTY, COLORADO

UNGRADED ELEVATION: 8190.6'

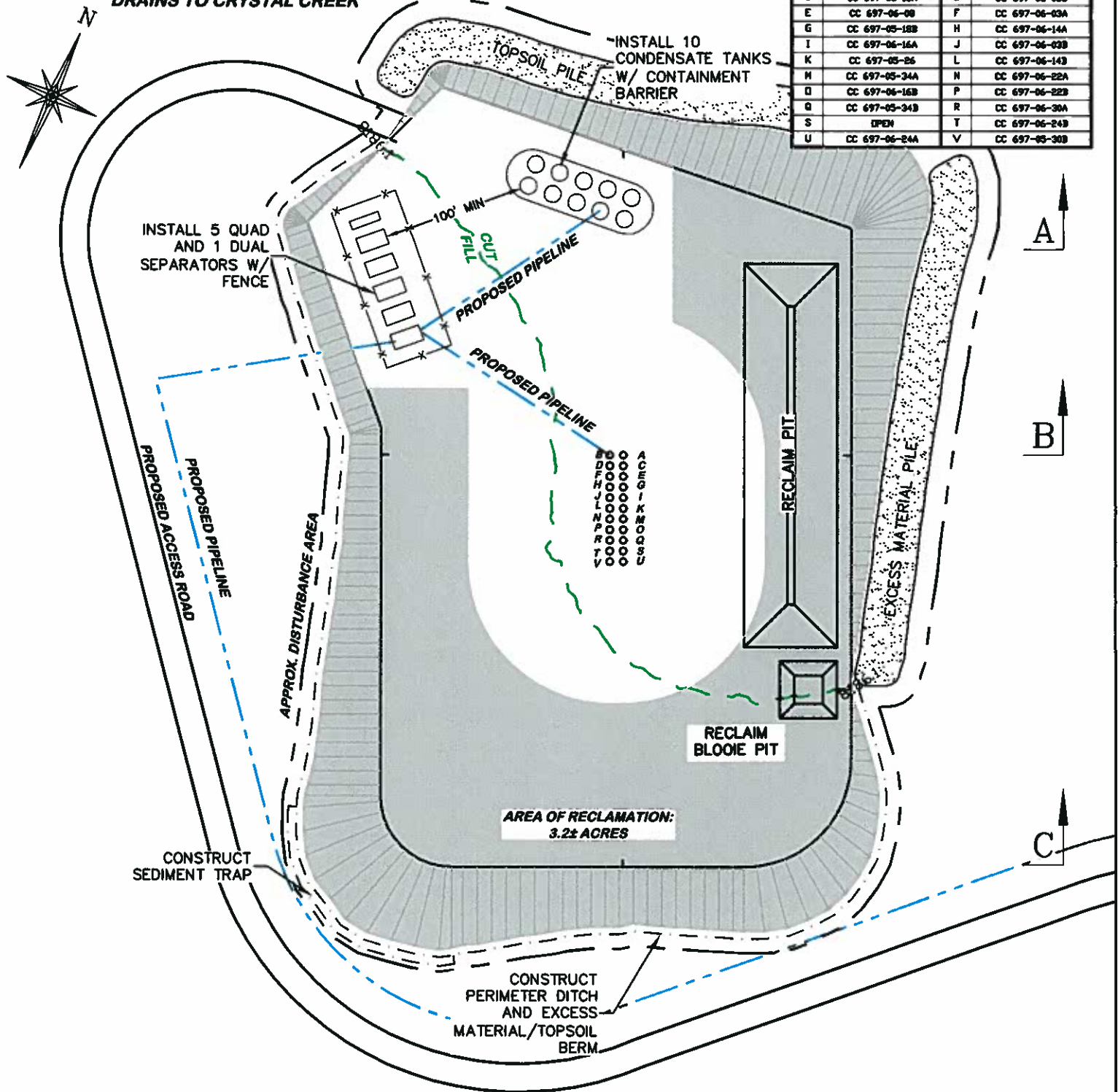
FINAL ELEVATION: 8186.1'

PROPOSED AREA OF DISTURBANCE: 6.4± ACRES

DRAINS TO CRYSTAL CREEK

PROPOSED RECLAMATION

CC 697-06A PAD			
SLOT	WELL	SLOT	WELL
A	CC 697-06-07	B	CC 697-06-05A
C	CC 697-05-18A	D	CC 697-06-05B
E	CC 697-06-08	F	CC 697-06-03A
G	CC 697-05-18B	H	CC 697-06-14A
I	CC 697-06-16A	J	CC 697-06-03B
K	CC 697-05-26	L	CC 697-06-14B
M	CC 697-05-34A	N	CC 697-06-22A
O	CC 697-06-16B	P	CC 697-06-22B
Q	CC 697-05-34B	R	CC 697-06-30A
S	OPEN	T	CC 697-06-24B
U	CC 697-06-24A	V	CC 697-06-30B



**BEFORE DIGGING
CALL FOR
UTILITY LINE LOCATION**

NOTE: THE EARTH QUANTITIES ON
THIS DRAWING ARE ESTIMATED AND
THE USE OF SAID QUANTITIES IS AT
THE RESPONSIBILITY OF THE USER.

CC 697-06A PAD

100 0 100
SCALE FEET



RIFFIN & ASSOCIATES, INC.

(307) 382-5028

1414 ELK ST., ROCK SPRINGS, WY 82901

DRAWN: 3/3/11 - DEH

SCALE: 1" = 100'

REVISED: 01/13/12 - TCM

DRG JOB No. 18236

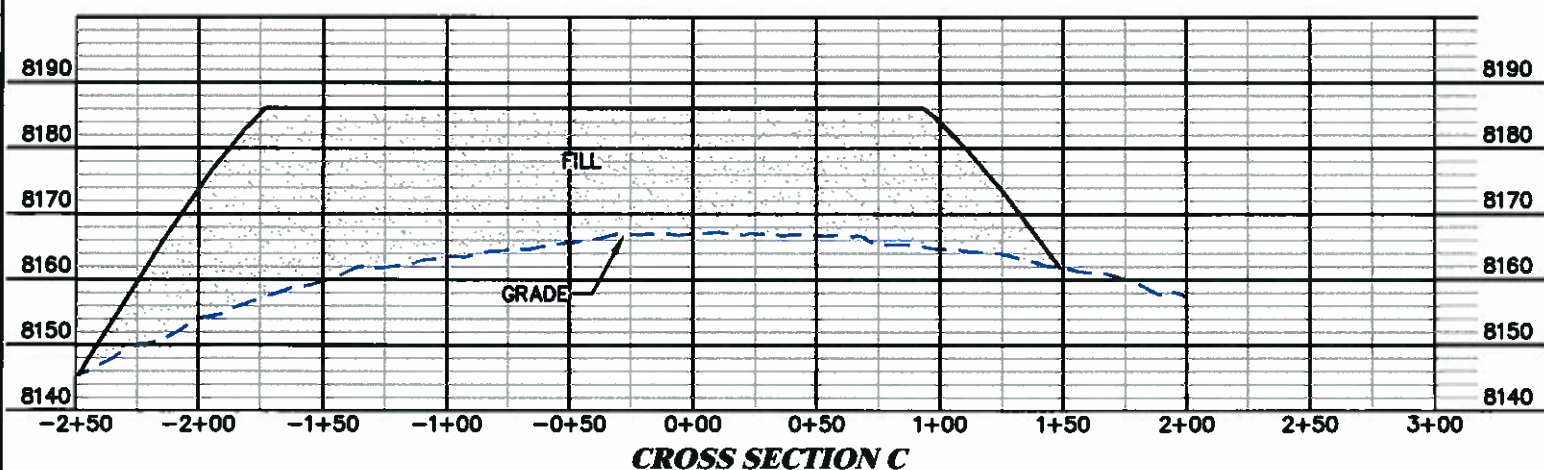
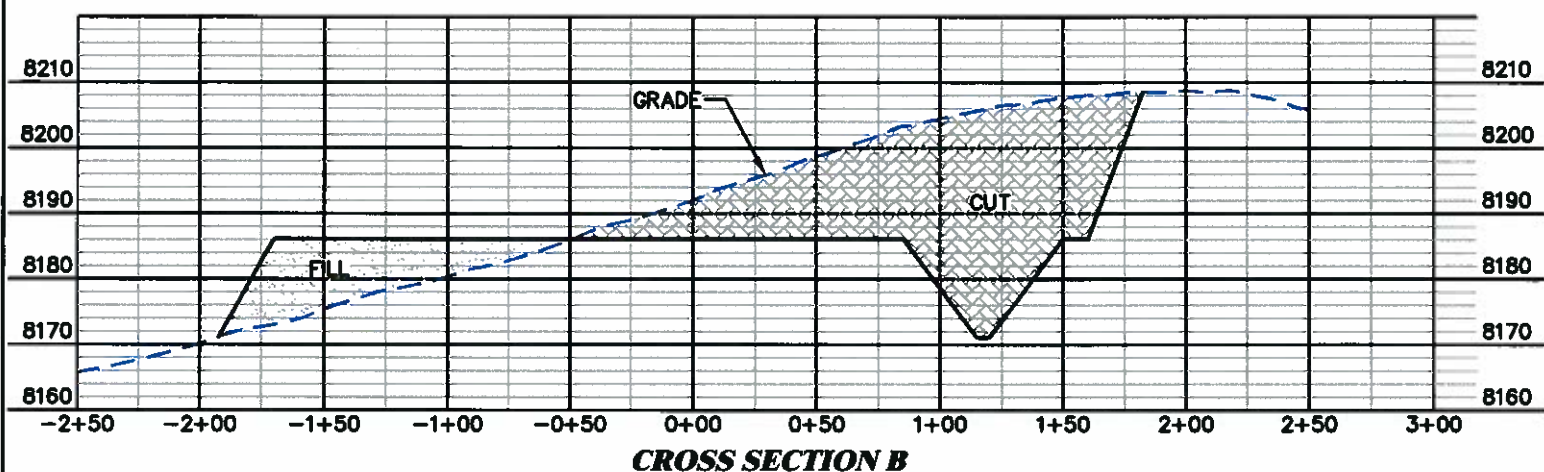
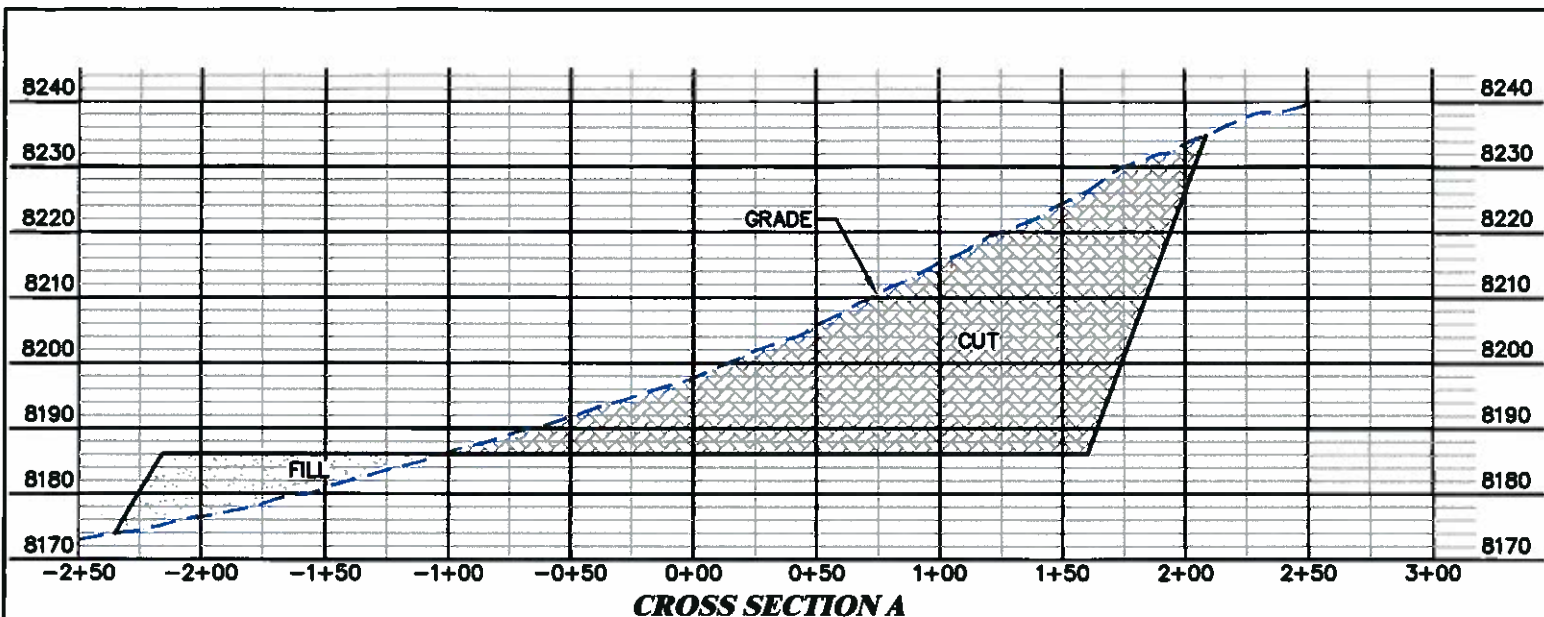
REVISED PAD

EXHIBIT 2C

CONSTRUCTION LAYOUT DRAWING 4 OF 5

PROPOSED RECLAMATION OXY USA WTP LP

CASCADE CREEK 697-05-18A, 18B, 26, 34A, 34B, 06-03A, 03B,
05A, 05B, 07, 08, 14A, 14B, 16A, 16B, 22A, 22B, 24A, 24B, 30A,
30B, LOT 15, NE SECTION 6, T. 6 S., R. 97 W., 6th P.M.,
GARFIELD COUNTY, COLORADO



FINISHED ELEVATION = 8186.1'

CC 697-06A PAD



(307) 362-5028

DRG RIFFIN & ASSOCIATES, INC.
1414 ELK ST., ROCK SPRINGS, WY 82901

DRAWN: 3/3/11 - DEH

HORZ. 1" = 80' VERT. 1" = 30'

REVISED: 01/13/12 - TCM

DRG JOB No. 18236

REVISED PAD

EXHIBIT 3

CONSTRUCTION LAYOUT DRAWING 5 OF 5

OXY USA WTP LP
CASCADE CREEK 697-05-18A, 18B, 26, 34A, 34B,
06-03A, 03B, 05A, 05B, 07, 08, 14A, 14B, 16A, 16B,
22A, 22B, 24A, 24B, 30A, 30B,
LOT 15, NE SECTION 6, T. 6 S., R. 97 W., 6th P.M.,
GARFIELD COUNTY, COLORADO