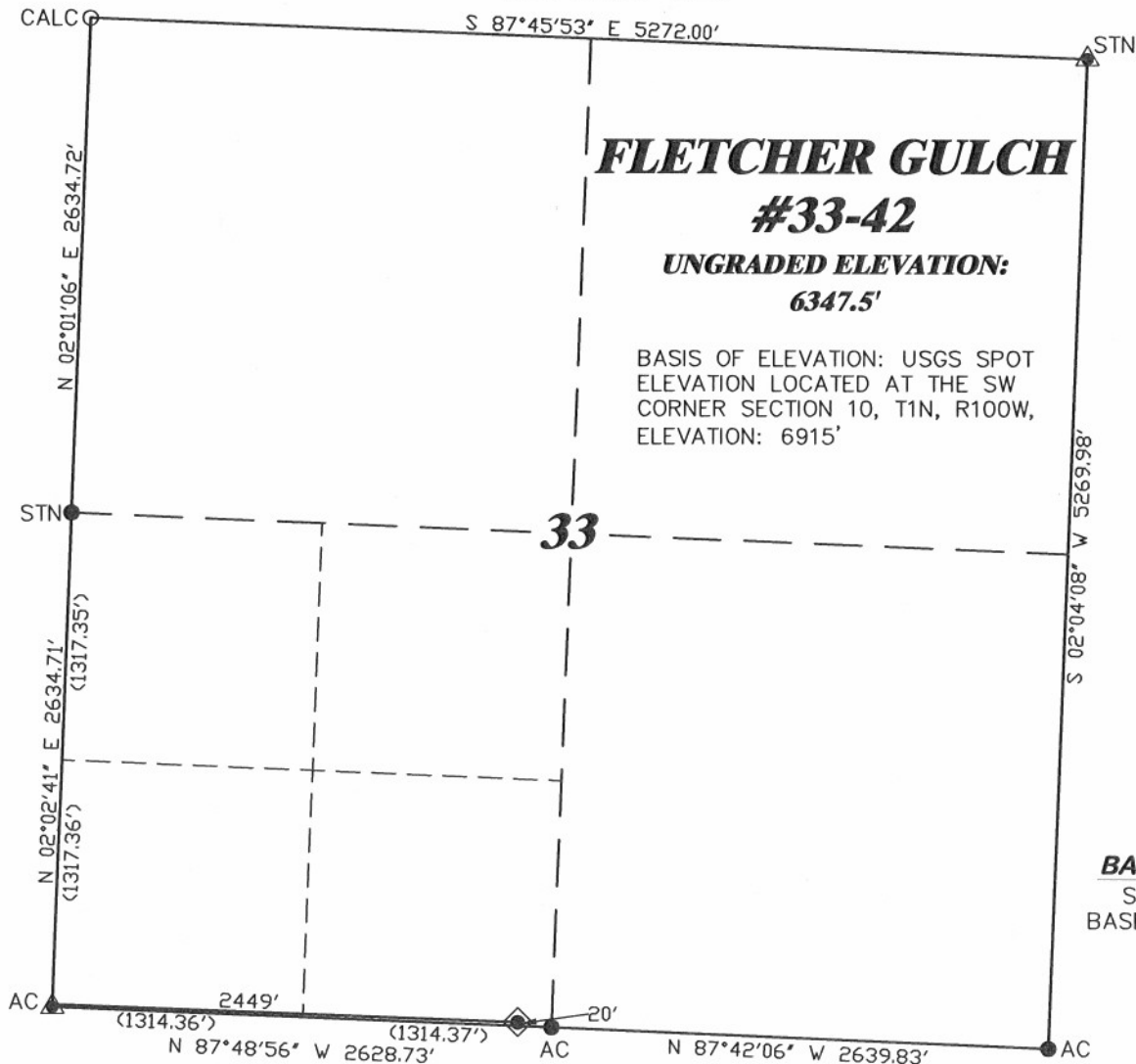


**R. 100 W.**



SCALE 1" = 1000'

**T. 2 N.**

**UNGRADED ELEVATION:**  
**6347.5'**

BASIS OF ELEVATION: USGS SPOT  
ELEVATION LOCATED AT THE SW  
CORNER SECTION 10, T1N, R100W,  
ELEVATION: 6915'

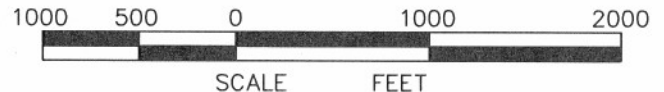
**LATITUDE (NAD 83)**  
NORTH 40.092131 DEG.  
**LONGITUDE (NAD 83)**  
WEST 108.622845 DEG.

**LATITUDE (NAD 27)**  
NORTH 40.092156 DEG.  
**LONGITUDE (NAD 27)**  
WEST 108.622188 DEG.

**NORTHING**  
291788.85

**EASTING**  
1126647.19

**BASIS OF BEARING/DATUM**  
SPCS CO NORTH NAD 27  
BASED ON NGS TRIANGULATION  
STATION "BOIES"



**SURVEYOR'S STATEMENT**

I, RONALD C. RENKE, AN AGENT ON BEHALF OF D.R. GRIFFIN & ASSOCIATES, HEREBY STATE: THIS MAP WAS MADE FROM NOTES TAKEN DURING AN ACTUAL FIELD SURVEY DONE UNDER MY DIRECT SUPERVISION ON MARCH 4, 2010 AND THAT THIS PLAT CORRECTLY SHOWS THE LOCATION OF FLETCHER GULCH #33-42 AS STAKED ON THE GROUND.

GPS OPERATOR TJ CLINTON  
OBSERVED A PDOP OF 2.4.  
ALL GPS OBSERVATIONS ARE IN  
COMPLIANCE WITH COGCC RULE No.215.

**NOTES**

NON-CROP RANGELAND  
NO EXISTING FEATURES WITHIN  
400' RADIUS OF WELL SITE.

**LEGEND**

- ◆ WELL LOCATION
- CALCULATED CORNER
- FOUND MONUMENT
- ▲ PREVIOUSLY FOUND MONUMENT



COLORADO PLS. No. 37065



**DRG RIFFIN & ASSOCIATES, INC.**  
1414 ELK ST., ROCK SPRINGS, WY 82901

(307) 362-5028

DRAWN: 8/28/08 - MML

REVISED: 3/10/10 - MMM

LOCATION MOVE

SCALE: 1" = 1000'

DRG JOB No. 16500

EXHIBIT 1

**PLAT OF DRILLING LOCATION  
FOR  
GENESIS GAS & OIL LLC.**

**20' F/SL & 2449' F/WL, SESW, SECTION 33,  
T. 2 N., R. 100 W., 6th P.M.  
RIO BLANCO COUNTY, COLORADO**