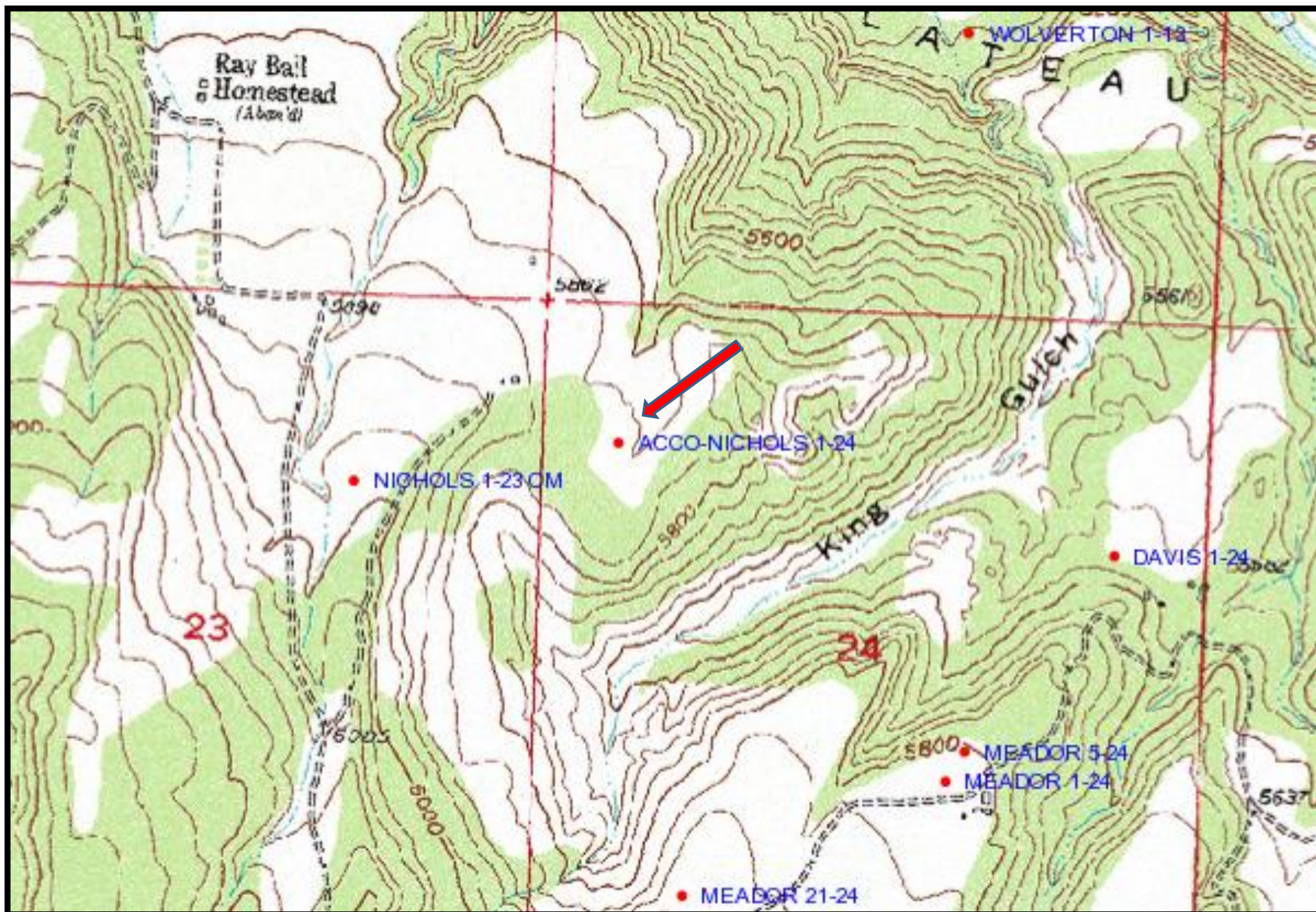


Operator: Coors Energy

Site: Acco-Nichols 1-24 (API# 077-08126)



Location Vicinity: USGS Topographic Map

Operator: Coors Energy

Site: Acco-Nichols 1-24 (API# 077-08126)



Imagery Date: September 1993

Operator: Coors Energy

Site: Acco-Nichols 1-24 (API# 077-08126)



Imagery Date 2009

Operator: Coors Energy

Site: Acco-Nichols 1-24 (API# 077-08126)



Imagery Date - August 2011 Land disturbance features (road extension & clear cutting) are recent ***and are not related*** to activities associated with the Acco-Nichols 1-24 site.