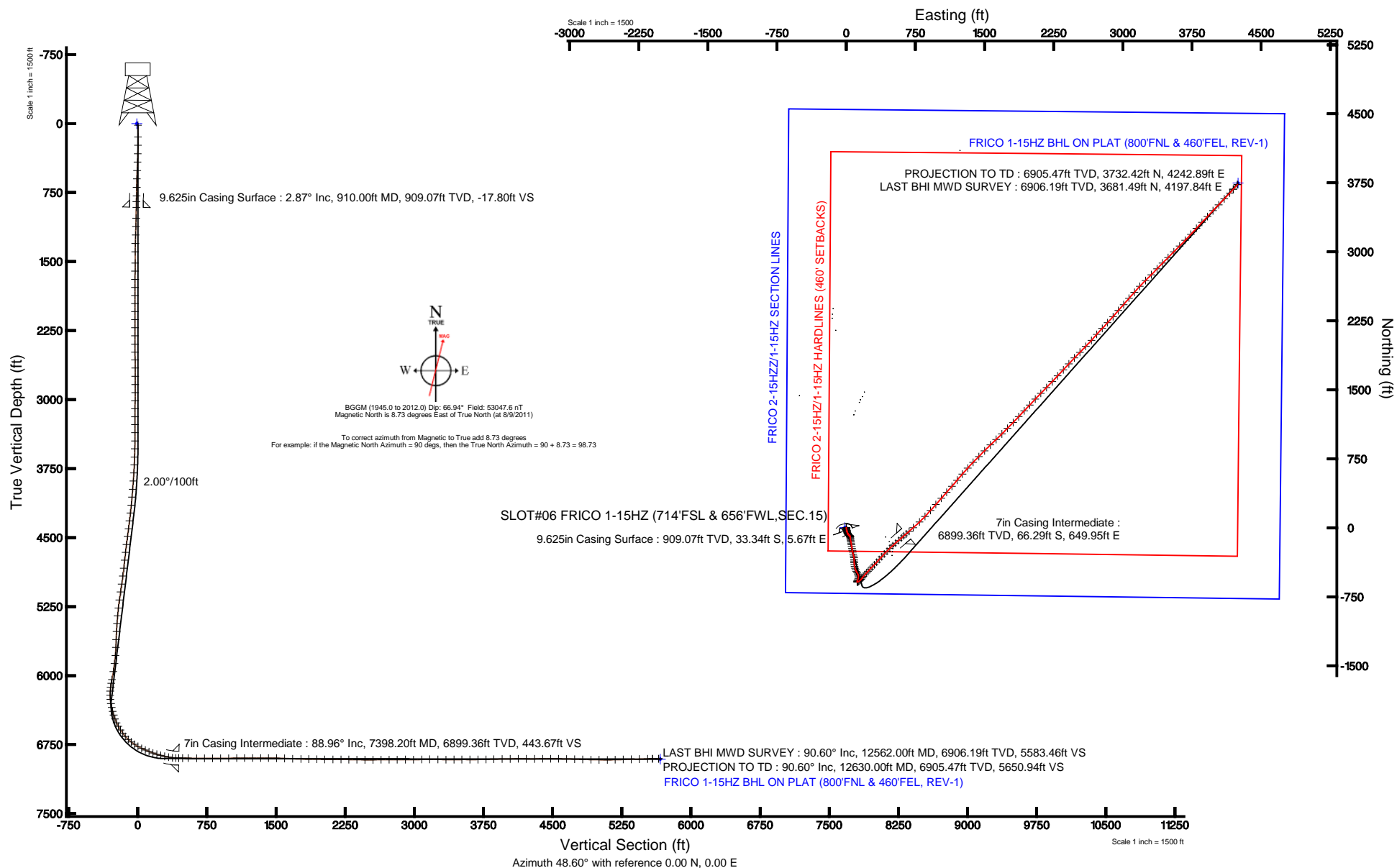


Location:	COLORADO	Slot:	SLOT#06 FRICO 1-15HZ (714'FSL & 656'FWL, SEC.15)
Field:	WELD COUNTY (KERR MCGEE)	Well:	FRICO 1-15HZ
Facility:	SEC.15-T3N-R65W	Wellbore:	FRICO 1-15HZ PWB



Plot reference wellpath is FRICO 1-15HZ (REV-A.0) PWP	
True vertical depths are referenced to XTREME 8 (RKB)	Grid System: NAD83 / Lambert Colorado SP, Northern Zone (501), US feet
Measured depths are referenced to XTREME 8 (RKB)	North Reference: True north
XTREME 8 (RKB) to Mean Sea Level: 4812 feet	Scale: True distance
Mean Sea Level to Mud line (At Slot: SLOT#06 FRICO 1-15HZ (714'FSL & 656'FWL,SEC.15): 0 feet	Depths are in feet
Coordinates are in feet referenced to SLOTH	Created by: wilsje02 on 12/13/2011





Actual Wellpath Report

FRICO 1-15HZ AWP

Page 1 of 6



REFERENCE WELLPATH IDENTIFICATION

Operator	ANADARKO E&P COMPANY LP	Slot	SLOT#06 FRICO 1-15HZ (714'FSL & 656'FWL,SEC.15)
Area	COLORADO	Well	FRICO 1-15HZ
Field	WELD COUNTY (KERR MCGEE)	Wellbore	FRICO 1-15HZ AWB
Facility	SEC.15-T3N-R65W		

REPORT SETUP INFORMATION

Projection System	NAD83 / Lambert Colorado SP, Northern Zone (501), US feet	Software System	WellArchitect® 3.0.0
North Reference	True	User	Wilsjef02
Scale	0.999957	Report Generated	12/13/2011 at 12:41:12 PM
Convergence at slot	0.54° East	Database/Source file	WA_DENVER/FRICO_1-15HZ_AWB.xml

WELLPATH LOCATION

	Local coordinates		Grid coordinates		Geographic coordinates	
	North[ft]	East[ft]	Easting[US ft]	Northing[US ft]	Latitude	Longitude
Slot Location	-2322.01	151.89	3235399.12	1324152.99	40°13'12.454"N	104°39'25.258"W
Facility Reference Pt			3235225.19	1326473.35	40°13'35.400"N	104°39'27.216"W
Field Reference Pt			3197771.84	1268891.29	40°04'09.600"N	104°47'36.000"W

WELLPATH DATUM

Calculation method	Minimum curvature	XTREME 8 (RKB) to Facility Vertical Datum	4812.00ft
Horizontal Reference Pt	Slot	XTREME 8 (RKB) to Mean Sea Level	4812.00ft
Vertical Reference Pt	XTREME 8 (RKB)	XTREME 8 (RKB) to Mud Line at Slot (SLOT#06 FRICO 1-15HZ (714'FSL & 656'FWL,SEC.15))	4812.00ft
MD Reference Pt	XTREME 8 (RKB)	Section Origin	N 0.00, E 0.00 ft
Field Vertical Reference	Mean Sea Level	Section Azimuth	48.60°



Actual Wellpath Report

FRICO 1-15HZ AWP

Page 2 of 6



REFERENCE WELLPATH IDENTIFICATION

Operator	ANADARKO E&P COMPANY LP	Slot	SLOT#06 FRICO 1-15HZ (714'FSL & 656'FWL,SEC.15)
Area	COLORADO	Well	FRICO 1-15HZ
Field	WELD COUNTY (KERR MCGEE)	Wellbore	FRICO 1-15HZ AWB
Facility	SEC.15-T3N-R65W		

WELLPATH DATA (160 stations) † = interpolated/extrapolated station

MD [ft]	Inclination [°]	Azimuth [°]	TVD [ft]	Vert Sect [ft]	North [ft]	East [ft]	Latitude	Longitude	DLS [°/100ft]	Comments
0.00†	0.000	5.300	0.00	0.00	0.00	0.00	40°13'12.454"N	104°39'25.258"W	0.00	
17.00	0.000	5.300	17.00	0.00	0.00	0.00	40°13'12.454"N	104°39'25.258"W	0.00	
144.00	0.500	5.300	144.00	0.40	0.55	0.05	40°13'12.459"N	104°39'25.257"W	0.39	
235.00	0.600	184.800	235.00	0.35	0.47	0.05	40°13'12.459"N	104°39'25.257"W	1.21	
326.00	2.600	175.900	325.96	-1.25	-2.06	0.16	40°13'12.434"N	104°39'25.256"W	2.21	
418.00	3.700	176.700	417.82	-4.34	-7.11	0.48	40°13'12.384"N	104°39'25.252"W	1.20	
510.00	3.900	176.000	509.61	-8.08	-13.19	0.86	40°13'12.324"N	104°39'25.247"W	0.22	
601.00	3.200	168.300	600.44	-11.21	-18.77	1.60	40°13'12.269"N	104°39'25.237"W	0.93	
693.00	2.700	167.200	692.32	-13.52	-23.39	2.60	40°13'12.223"N	104°39'25.225"W	0.55	
786.00	2.700	161.000	785.21	-15.41	-27.60	3.80	40°13'12.181"N	104°39'25.209"W	0.31	
849.00	2.800	162.100	848.14	-16.59	-30.47	4.75	40°13'12.153"N	104°39'25.197"W	0.18	
1028.00	3.000	163.500	1026.91	-20.30	-39.12	7.43	40°13'12.067"N	104°39'25.162"W	0.12	
1119.00	3.300	166.500	1117.77	-22.53	-43.95	8.71	40°13'12.020"N	104°39'25.146"W	0.38	
1212.00	3.600	170.000	1210.61	-25.30	-49.43	9.84	40°13'11.966"N	104°39'25.131"W	0.39	
1304.00	3.400	166.300	1302.43	-28.08	-54.92	10.99	40°13'11.911"N	104°39'25.116"W	0.33	
1395.00	1.700	150.300	1393.34	-29.61	-58.72	12.30	40°13'11.874"N	104°39'25.099"W	2.01	
1517.00	1.600	146.100	1515.29	-30.20	-61.70	14.15	40°13'11.844"N	104°39'25.076"W	0.13	
1605.00	1.500	154.000	1603.26	-30.66	-63.76	15.34	40°13'11.824"N	104°39'25.060"W	0.27	
1694.00	1.400	146.200	1692.23	-31.12	-65.71	16.45	40°13'11.805"N	104°39'25.046"W	0.25	
1783.00	1.700	147.500	1781.20	-31.46	-67.72	17.77	40°13'11.785"N	104°39'25.029"W	0.34	
1870.00	1.700	137.000	1868.16	-31.63	-69.76	19.34	40°13'11.765"N	104°39'25.009"W	0.36	
1958.00	1.700	144.900	1956.12	-31.73	-71.78	20.98	40°13'11.745"N	104°39'24.988"W	0.27	
2045.00	1.700	139.700	2043.08	-31.90	-73.82	22.56	40°13'11.725"N	104°39'24.967"W	0.18	
2133.00	1.900	150.600	2131.04	-32.23	-76.09	24.12	40°13'11.702"N	104°39'24.947"W	0.45	
2221.00	1.900	137.500	2218.99	-32.51	-78.43	25.82	40°13'11.679"N	104°39'24.925"W	0.49	
2309.00	1.600	127.800	2306.95	-32.25	-80.26	27.78	40°13'11.661"N	104°39'24.900"W	0.48	
2399.00	1.300	132.800	2396.92	-31.91	-81.72	29.52	40°13'11.646"N	104°39'24.877"W	0.36	
2486.00	1.600	124.700	2483.89	-31.52	-83.09	31.24	40°13'11.633"N	104°39'24.855"W	0.42	
2572.00	1.600	117.100	2569.86	-30.79	-84.32	33.30	40°13'11.621"N	104°39'24.829"W	0.25	
2660.00	1.200	124.300	2657.84	-30.11	-85.40	35.15	40°13'11.610"N	104°39'24.805"W	0.50	
2750.00	1.200	137.300	2747.82	-29.86	-86.62	36.57	40°13'11.598"N	104°39'24.787"W	0.30	
2840.00	1.000	142.100	2837.80	-29.88	-87.93	37.69	40°13'11.585"N	104°39'24.772"W	0.24	
2926.00	1.200	154.000	2923.78	-30.17	-89.33	38.55	40°13'11.571"N	104°39'24.761"W	0.35	
3014.00	1.200	157.000	3011.76	-30.70	-91.01	39.31	40°13'11.555"N	104°39'24.751"W	0.07	
3102.00	1.300	158.700	3099.74	-31.34	-92.79	40.03	40°13'11.537"N	104°39'24.742"W	0.12	
3189.00	1.400	161.400	3186.72	-32.09	-94.72	40.73	40°13'11.518"N	104°39'24.733"W	0.14	
3275.00	0.700	132.200	3272.70	-32.44	-96.06	41.46	40°13'11.505"N	104°39'24.724"W	1.00	
3363.00	0.400	122.700	3360.70	-32.29	-96.59	42.11	40°13'11.499"N	104°39'24.715"W	0.36	
3451.00	0.200	133.700	3448.70	-32.20	-96.86	42.48	40°13'11.497"N	104°39'24.710"W	0.24	
3538.00	2.200	192.000	3535.68	-33.53	-98.60	42.24	40°13'11.480"N	104°39'24.713"W	2.42	
3628.00	3.300	176.400	3625.57	-36.50	-102.88	42.05	40°13'11.437"N	104°39'24.716"W	1.47	
3714.00	4.600	167.600	3711.37	-39.69	-108.72	42.94	40°13'11.380"N	104°39'24.704"W	1.66	
3801.00	5.700	174.700	3798.02	-43.93	-116.42	44.09	40°13'11.303"N	104°39'24.690"W	1.46	
3889.00	7.300	174.100	3885.45	-49.75	-126.34	45.07	40°13'11.206"N	104°39'24.677"W	1.82	
3979.00	8.800	170.600	3974.56	-56.72	-138.82	46.78	40°13'11.082"N	104°39'24.655"W	1.75	
4067.00	10.000	165.700	4061.38	-63.77	-152.86	49.77	40°13'10.943"N	104°39'24.616"W	1.64	
4154.00	10.500	171.300	4146.99	-71.49	-168.02	52.83	40°13'10.794"N	104°39'24.577"W	1.28	
4242.00	11.900	171.800	4233.31	-80.79	-184.93	55.34	40°13'10.627"N	104°39'24.545"W	1.59	
4330.00	13.000	171.200	4319.24	-91.10	-203.69	58.15	40°13'10.441"N	104°39'24.508"W	1.26	
4419.00	13.400	168.900	4405.89	-101.69	-223.70	61.67	40°13'10.243"N	104°39'24.463"W	0.74	
4505.00	14.200	168.500	4489.41	-111.98	-243.82	65.69	40°13'10.045"N	104°39'24.411"W	0.94	
4594.00	15.300	168.300	4575.47	-123.24	-266.01	70.25	40°13'09.825"N	104°39'24.352"W	1.24	
4682.00	14.000	166.300	4660.61	-133.94	-287.73	75.12	40°13'09.611"N	104°39'24.290"W	1.58	
4770.00	12.400	167.400	4746.28	-143.45	-307.29	79.70	40°13'09.417"N	104°39'24.231"W	1.84	
4859.00	12.300	171.400	4833.22	-153.19	-325.99	83.21	40°13'09.233"N	104°39'24.185"W	0.97	
4947.00	11.300	177.500	4919.37	-163.68	-343.87	84.98	40°13'09.056"N	104°39'24.162"W	1.82	
5037.00	12.100	179.700	5007.50	-175.42	-362.11	85.42	40°13'08.876"N	104°39'24.157"W	1.02	
5124.00	13.200	179.000	5092.38	-187.85	-381.16	85.64	40°13'08.687"N	104°39'24.154"W	1.28	
5213.00	12.900	175.800	5179.09	-200.44	-401.23	86.54	40°13'08.489"N	104°39'24.142"W	0.88	
5303.00	13.000	169.500	5266.80	-211.72	-421.21	89.12	40°13'08.292"N	104°39'24.109"W	1.57	



Actual Wellpath Report

FRICO 1-15HZ AWP

Page 3 of 6



REFERENCE WELLPATH IDENTIFICATION

Operator	ANADARKO E&P COMPANY LP	Slot	SLOT#06 FRICO 1-15HZ (714'FSL & 656'FWL,SEC.15)
Area	COLORADO	Well	FRICO 1-15HZ
Field	WELD COUNTY (KERR MCGEE)	Wellbore	FRICO 1-15HZ AWB
Facility	SEC.15-T3N-R65W		

WELLPATH DATA (160 stations) † = interpolated/extrapolated station

MD [ft]	Inclination [°]	Azimuth [°]	TVD [ft]	Vert Sect [ft]	North [ft]	East [ft]	Latitude	Longitude	DLS [°/100ft]	Comments
5389.00	12.400	161.700	5350.70	-220.31	-439.48	93.79	40°13'08.111"N	104°39'24.049"W	2.11	
5477.00	12.500	156.900	5436.64	-227.01	-457.22	100.49	40°13'07.936"N	104°39'23.963"W	1.18	
5565.00	12.300	153.400	5522.59	-232.40	-474.36	108.42	40°13'07.766"N	104°39'23.860"W	0.88	
5653.00	10.300	147.500	5608.88	-236.01	-489.38	116.85	40°13'07.618"N	104°39'23.752"W	2.62	
5741.00	10.800	150.600	5695.39	-238.94	-503.19	125.12	40°13'07.481"N	104°39'23.645"W	0.86	
5830.00	10.100	169.100	5782.94	-244.64	-518.13	130.69	40°13'07.334"N	104°39'23.573"W	3.83	
5918.00	9.700	185.400	5869.65	-253.96	-533.09	131.46	40°13'07.186"N	104°39'23.563"W	3.21	
6007.00	11.300	191.400	5957.15	-266.37	-549.10	129.03	40°13'07.028"N	104°39'23.595"W	2.18	
6096.00	12.100	202.900	6044.32	-281.73	-566.24	123.67	40°13'06.858"N	104°39'23.664"W	2.76	
6138.00	10.900	204.200	6085.47	-289.31	-573.92	120.33	40°13'06.783"N	104°39'23.707"W	2.92	
6181.00	8.500	202.400	6127.86	-295.87	-580.57	117.45	40°13'06.717"N	104°39'23.744"W	5.63	
6224.00	6.600	177.200	6170.49	-300.26	-585.98	116.36	40°13'06.663"N	104°39'23.758"W	8.77	
6269.00	5.400	128.300	6215.27	-301.50	-589.87	118.15	40°13'06.625"N	104°39'23.735"W	11.29	
6314.00	5.900	72.900	6260.08	-299.01	-590.51	122.03	40°13'06.619"N	104°39'23.685"W	11.70	
6359.00	9.700	63.300	6304.66	-293.23	-588.12	127.63	40°13'06.642"N	104°39'23.613"W	8.90	
6403.00	12.600	60.700	6347.83	-284.95	-584.11	135.13	40°13'06.682"N	104°39'23.516"W	6.69	
6446.00	14.400	53.000	6389.64	-275.03	-578.59	143.49	40°13'06.736"N	104°39'23.408"W	5.91	
6489.00	17.600	44.100	6430.98	-263.22	-570.70	152.28	40°13'06.814"N	104°39'23.295"W	9.36	
6534.00	20.900	39.400	6473.46	-248.51	-559.61	162.12	40°13'06.924"N	104°39'23.168"W	8.10	
6579.00	24.700	36.800	6514.93	-231.37	-545.88	172.85	40°13'07.060"N	104°39'23.030"W	8.73	
6622.00	28.600	38.400	6553.36	-212.44	-530.61	184.63	40°13'07.211"N	104°39'22.878"W	9.22	
6667.00	33.000	42.000	6592.01	-189.65	-513.05	199.53	40°13'07.384"N	104°39'22.686"W	10.60	
6712.00	37.100	42.400	6628.84	-163.98	-493.91	216.88	40°13'07.573"N	104°39'22.462"W	9.13	
6756.00	42.000	43.200	6662.75	-136.11	-473.37	235.92	40°13'07.776"N	104°39'22.217"W	11.20	
6801.00	46.300	43.400	6695.04	-104.91	-450.57	257.41	40°13'08.002"N	104°39'21.940"W	9.56	
6844.00	51.600	44.300	6723.26	-72.60	-427.20	279.88	40°13'08.232"N	104°39'21.650"W	12.43	
6888.00	55.700	43.800	6749.34	-37.28	-401.73	304.51	40°13'08.484"N	104°39'21.333"W	9.36	
6932.00	61.200	43.200	6772.35	0.05	-374.54	330.31	40°13'08.753"N	104°39'21.000"W	12.55	
6977.00	65.500	42.400	6792.53	40.05	-345.03	357.62	40°13'09.044"N	104°39'20.648"W	9.69	
7022.00	66.800	42.300	6810.73	80.96	-314.61	385.35	40°13'09.345"N	104°39'20.290"W	2.90	
7066.00	68.100	42.800	6827.60	121.37	-284.68	412.83	40°13'09.641"N	104°39'19.936"W	3.14	
7111.00	70.800	44.200	6843.40	163.34	-254.12	441.83	40°13'09.943"N	104°39'19.562"W	6.67	
7156.00	73.300	46.000	6857.26	206.06	-223.91	472.16	40°13'10.241"N	104°39'19.171"W	6.73	
7200.00	75.100	48.200	6869.25	248.38	-195.10	503.17	40°13'10.526"N	104°39'18.772"W	6.32	
7244.00	77.000	48.200	6879.85	291.08	-166.64	535.00	40°13'10.807"N	104°39'18.361"W	4.32	
7287.00	79.000	48.200	6888.79	333.14	-138.60	566.35	40°13'11.084"N	104°39'17.957"W	4.65	
7330.00	83.300	49.500	6895.41	375.62	-110.65	598.34	40°13'11.360"N	104°39'17.545"W	10.44	
7365.00	87.300	49.200	6898.27	410.49	-87.93	624.80	40°13'11.585"N	104°39'17.204"W	11.46	
7398.20†	88.960	49.380	6899.36	443.67	-66.29	649.95	40°13'11.799"N	104°39'16.879"W	5.03	7" Casing
7439.00	91.000	49.600	6899.37	484.46	-39.79	680.97	40°13'12.061"N	104°39'16.480"W	5.03	
7500.00	89.100	48.100	6899.32	545.45	0.35	726.90	40°13'12.457"N	104°39'15.887"W	3.97	
7591.00	89.300	46.500	6900.59	636.42	62.05	793.77	40°13'13.067"N	104°39'15.025"W	1.77	
7677.00	89.400	42.700	6901.56	722.19	123.27	854.14	40°13'13.672"N	104°39'14.247"W	4.42	
7764.00	90.300	42.700	6901.79	808.73	187.21	913.14	40°13'14.304"N	104°39'13.487"W	1.03	
7852.00	89.900	41.500	6901.64	896.16	252.50	972.13	40°13'14.949"N	104°39'12.726"W	1.44	
7942.00	91.700	40.800	6900.38	985.39	320.26	1031.35	40°13'15.619"N	104°39'11.963"W	2.15	
8029.00	90.800	41.000	6898.48	1071.58	386.00	1088.30	40°13'16.268"N	104°39'11.228"W	1.06	
8116.00	89.800	41.700	6898.03	1157.88	451.31	1145.77	40°13'16.914"N	104°39'10.487"W	1.40	
8203.00	90.000	39.800	6898.18	1244.07	517.21	1202.56	40°13'17.565"N	104°39'09.755"W	2.20	
8291.00	90.000	41.300	6898.18	1331.20	584.08	1259.77	40°13'18.226"N	104°39'09.018"W	1.70	
8378.00	89.100	41.800	6898.86	1417.54	649.18	1317.47	40°13'18.869"N	104°39'08.274"W	1.18	
8464.00	89.900	44.600	6899.61	1503.14	711.87	1376.33	40°13'19.488"N	104°39'07.515"W	3.39	
8552.00	86.800	44.400	6902.15	1590.87	774.60	1437.98	40°13'20.108"N	104°39'06.720"W	3.53	
8640.00	87.700	45.200	6906.37	1678.58	836.97	1499.91	40°13'20.724"N	104°39'05.922"W	1.37	
8730.00	88.600	45.300	6909.28	1768.37	900.29	1563.80	40°13'21.350"N	104°39'05.098"W	1.01	
8816.00	90.400	46.600	6910.03	1854.27	960.08	1625.60	40°13'21.941"N	104°39'04.301"W	2.58	
8903.00	88.200	45.300	6911.09	1941.17	1020.56	1688.12	40°13'22.539"N	104°39'03.495"W	2.94	
8989.00	89.300	44.500	6912.96	2026.97	1081.46	1748.81	40°13'23.140"N	104°39'02.713"W	1.58	
9077.00	90.700	44.200	6912.96	2114.72	1144.39	1810.32	40°13'23.762"N	104°39'01.920"W	1.63	
9165.00	89.000	42.800	6913.20	2202.37	1208.22	1870.90	40°13'24.393"N	104°39'01.139"W	2.50	



Actual Wellpath Report

FRICO 1-15HZ AWP

Page 4 of 6



REFERENCE WELLPATH IDENTIFICATION

Operator	ANADARKO E&P COMPANY LP	Slot	SLOT#06 FRICO 1-15HZ (714'FSL & 656'FWL,SEC.15)
Area	COLORADO	Well	FRICO 1-15HZ
Field	WELD COUNTY (KERR MCGEE)	Wellbore	FRICO 1-15HZ AWB
Facility	SEC.15-T3N-R65W		

WELLPATH DATA (160 stations)

MD [ft]	Inclination [°]	Azimuth [°]	TVD [ft]	Vert Sect [ft]	North [ft]	East [ft]	Latitude	Longitude	DLS [°/100ft]	Comments
9252.00	89.100	43.900	6914.64	2288.99	1271.47	1930.61	40°13'25.018"N	104°39'00.369"W	1.27	
9340.00	89.100	43.100	6916.02	2376.63	1335.30	1991.18	40°13'25.649"N	104°38'59.588"W	0.91	
9428.00	89.100	42.400	6917.40	2464.16	1399.91	2050.90	40°13'26.287"N	104°38'58.818"W	0.80	
9515.00	90.900	45.100	6917.40	2550.84	1462.75	2111.06	40°13'26.908"N	104°38'58.043"W	3.73	
9603.00	90.600	44.200	6916.25	2638.62	1525.35	2172.89	40°13'27.526"N	104°38'57.245"W	1.08	
9691.00	90.500	44.000	6915.41	2726.35	1588.54	2234.13	40°13'28.151"N	104°38'56.436"W	0.25	
9778.00	89.800	42.200	6915.18	2812.94	1652.06	2293.57	40°13'28.778"N	104°38'55.689"W	2.22	
9867.00	90.400	43.600	6915.02	2901.50	1717.25	2354.16	40°13'29.423"N	104°38'54.908"W	1.71	
9955.00	89.300	42.600	6915.25	2989.09	1781.51	2414.28	40°13'30.058"N	104°38'54.133"W	1.69	
10045.00	92.100	44.000	6914.15	3078.69	1846.99	2475.99	40°13'30.705"N	104°38'53.337"W	3.48	
10131.00	90.400	44.600	6912.28	3164.43	1908.52	2536.04	40°13'31.313"N	104°38'52.563"W	2.10	
10221.00	87.900	43.700	6913.61	3254.14	1973.09	2598.72	40°13'31.951"N	104°38'51.755"W	2.95	
10310.00	90.100	41.900	6915.17	3342.66	2038.37	2659.17	40°13'32.596"N	104°38'50.975"W	3.19	
10397.00	90.200	41.800	6914.94	3429.06	2103.18	2717.22	40°13'33.236"N	104°38'50.227"W	0.16	
10484.00	90.100	43.700	6914.71	3515.60	2167.06	2776.27	40°13'33.867"N	104°38'49.466"W	2.19	
10570.00	89.600	42.100	6914.94	3601.17	2230.06	2834.81	40°13'34.490"N	104°38'48.711"W	1.95	
10659.00	91.100	41.800	6914.39	3689.57	2296.25	2894.30	40°13'35.144"N	104°38'47.944"W	1.72	
10747.00	90.900	41.400	6912.86	3776.90	2362.04	2952.72	40°13'35.794"N	104°38'47.191"W	0.51	
10833.00	91.400	40.800	6911.13	3862.15	2426.84	3009.24	40°13'36.434"N	104°38'46.462"W	0.91	
10923.00	91.100	40.900	6909.17	3951.31	2494.90	3068.09	40°13'37.107"N	104°38'45.703"W	0.35	
11011.00	91.200	41.700	6907.40	4038.57	2561.00	3126.16	40°13'37.760"N	104°38'44.954"W	0.92	
11099.00	90.100	43.100	6906.40	4126.05	2625.97	3185.49	40°13'38.402"N	104°38'44.189"W	2.02	
11187.00	88.900	45.200	6907.17	4213.78	2689.11	3246.78	40°13'39.025"N	104°38'43.399"W	2.75	
11276.00	90.900	44.800	6907.33	4302.60	2752.04	3309.71	40°13'39.647"N	104°38'42.587"W	2.29	
11364.00	91.100	43.800	6905.79	4390.33	2815.01	3371.16	40°13'40.269"N	104°38'41.795"W	1.16	
11452.00	89.300	44.700	6905.48	4478.08	2878.04	3432.56	40°13'40.892"N	104°38'41.003"W	2.29	
11538.00	88.900	44.600	6906.83	4563.86	2939.21	3492.99	40°13'41.497"N	104°38'40.224"W	0.48	
11625.00	88.900	44.900	6908.50	4650.65	3000.99	3554.23	40°13'42.107"N	104°38'39.434"W	0.34	
11714.00	88.800	44.800	6910.29	4739.44	3064.07	3616.99	40°13'42.730"N	104°38'38.625"W	0.16	
11801.00	88.200	43.600	6912.57	4826.15	3126.42	3677.62	40°13'43.346"N	104°38'37.843"W	1.54	
11890.00	88.500	43.000	6915.13	4914.74	3191.16	3738.63	40°13'43.986"N	104°38'37.057"W	0.75	
11978.00	89.100	42.400	6916.97	5002.25	3255.82	3798.29	40°13'44.625"N	104°38'36.287"W	0.96	
12068.00	90.000	43.100	6917.68	5091.78	3321.91	3859.38	40°13'45.278"N	104°38'35.500"W	1.27	
12154.00	91.200	43.600	6916.78	5177.41	3384.44	3918.41	40°13'45.896"N	104°38'34.738"W	1.51	
12242.00	92.000	43.200	6914.32	5265.01	3448.35	3978.85	40°13'46.527"N	104°38'33.959"W	1.02	
12331.00	90.800	44.200	6912.15	5353.66	3512.67	4040.32	40°13'47.163"N	104°38'33.166"W	1.75	
12419.00	92.400	43.400	6909.69	5441.32	3576.16	4101.20	40°13'47.790"N	104°38'32.381"W	2.03	
12507.00	91.100	42.400	6907.00	5528.84	3640.59	4161.08	40°13'48.427"N	104°38'31.609"W	1.86	
12562.00	90.600	41.500	6906.19	5583.46	3681.49	4197.84	40°13'48.831"N	104°38'31.135"W	1.87	LAST BHI MWD SURVEY
12630.00	90.600	41.500	6905.47	5650.94	3732.42	4242.89	40°13'49.334"N	104°38'30.554"W	0.00	PROJECTION TO TD

HOLE & CASING SECTIONS - Ref Wellbore: FRICO 1-15HZ AWB Ref Wellpath: FRICO 1-15HZ AWP

String/Diameter	Start MD [ft]	End MD [ft]	Interval [ft]	Start TVD [ft]	End TVD [ft]	Start N/S [ft]	Start E/W [ft]	End N/S [ft]	End E/W [ft]
13.5in Open Hole	17.00	910.00	893.00	17.00	909.07	0.00	0.00	-33.34	5.67
9.625in Casing Surface	17.00	910.00	893.00	17.00	909.07	0.00	0.00	-33.34	5.67
8.75in Open Hole	910.00	7415.00	6505.00	909.07	6899.54	-33.34	5.67	-55.37	662.71
7in Casing Intermediate	17.00	7398.20	7381.20	17.00	6899.36	0.00	0.00	-66.29	649.95
6.125in Open Hole	7398.20	12630.00	5231.80	6899.36	6905.47	-66.29	649.95	3732.42	4242.89



Actual Wellpath Report

FRICO 1-15HZ AWP

Page 5 of 6



REFERENCE WELLPATH IDENTIFICATION

Operator	ANADARKO E&P COMPANY LP	Slot	SLOT#06 FRICO 1-15HZ (714'FSL & 656'FWL,SEC.15)
Area	COLORADO	Well	FRICO 1-15HZ
Field	WELD COUNTY (KERR MCGEE)	Wellbore	FRICO 1-15HZ AWB
Facility	SEC.15-T3N-R65W		

TARGETS

Name	MD [ft]	TVD [ft]	North [ft]	East [ft]	Grid East [US ft]	Grid North [US ft]	Latitude	Longitude	Shape
FRICO 2-15HZZ/1-15HZ SECTION LINES		0.00	0.00	-15.90	3235383.22	1324152.84	40°13'12.454"N	104°39'25.463"W	polygon
FRICO 1-15HZ BHL ON PLAT (800'FNL & 460'FEL, REV-1)		6910.00	3748.62	4251.43	3239614.53	1327941.68	40°13'49.494"N	104°38'30.444"W	point
FRICO 2-15HZ/1-15HZ HARDLINES (460' SETBACKS)		6920.00	0.00	-15.90	3235383.22	1324152.84	40°13'12.454"N	104°39'25.463"W	polygon

WELLPATH COMPOSITION - Ref Wellbore: FRICO 1-15HZ AWB Ref Wellpath: FRICO 1-15HZ AWP

Start MD [ft]	End MD [ft]	Positional Uncertainty Model	Log Name/Comment	Wellbore
17.00	849.00	NaviTrak (Standard)	BHI MWD SURVEYS 13.5" HOLE <144-849>	FRICO 1-15HZ AWB
849.00	7365.00	NaviTrak (Standard)	BHI MWD SURVEYS 8 3/4" HOLE <1028-7365>	FRICO 1-15HZ AWB
7365.00	12562.00	NaviTrak (Standard)	BHI MWD SURVEYS 6 1/8" HOLE <7439-125662>	FRICO 1-15HZ AWB
12562.00	12630.00	Blind Drilling (std)	Projection to bit	FRICO 1-15HZ AWB



Actual Wellpath Report

FRICO 1-15HZ AWP

Page 6 of 6



REFERENCE WELLPATH IDENTIFICATION

Operator	ANADARKO E&P COMPANY LP	Slot	SLOT#06 FRICO 1-15HZ (714'FSL & 656'FWL,SEC.15)
Area	COLORADO	Well	FRICO 1-15HZ
Field	WELD COUNTY (KERR MCGEE)	Wellbore	FRICO 1-15HZ AWB
Facility	SEC.15-T3N-R65W		

WELLPATH COMMENTS

MD [ft]	Inclination [°]	Azimuth [°]	TVD [ft]	Comment
7398.20	88.960	49.380	6899.36	7" Casing
12562.00	90.600	41.500	6906.19	LAST BHI MWD SURVEY
12630.00	90.600	41.500	6905.47	PROJECTION TO TD