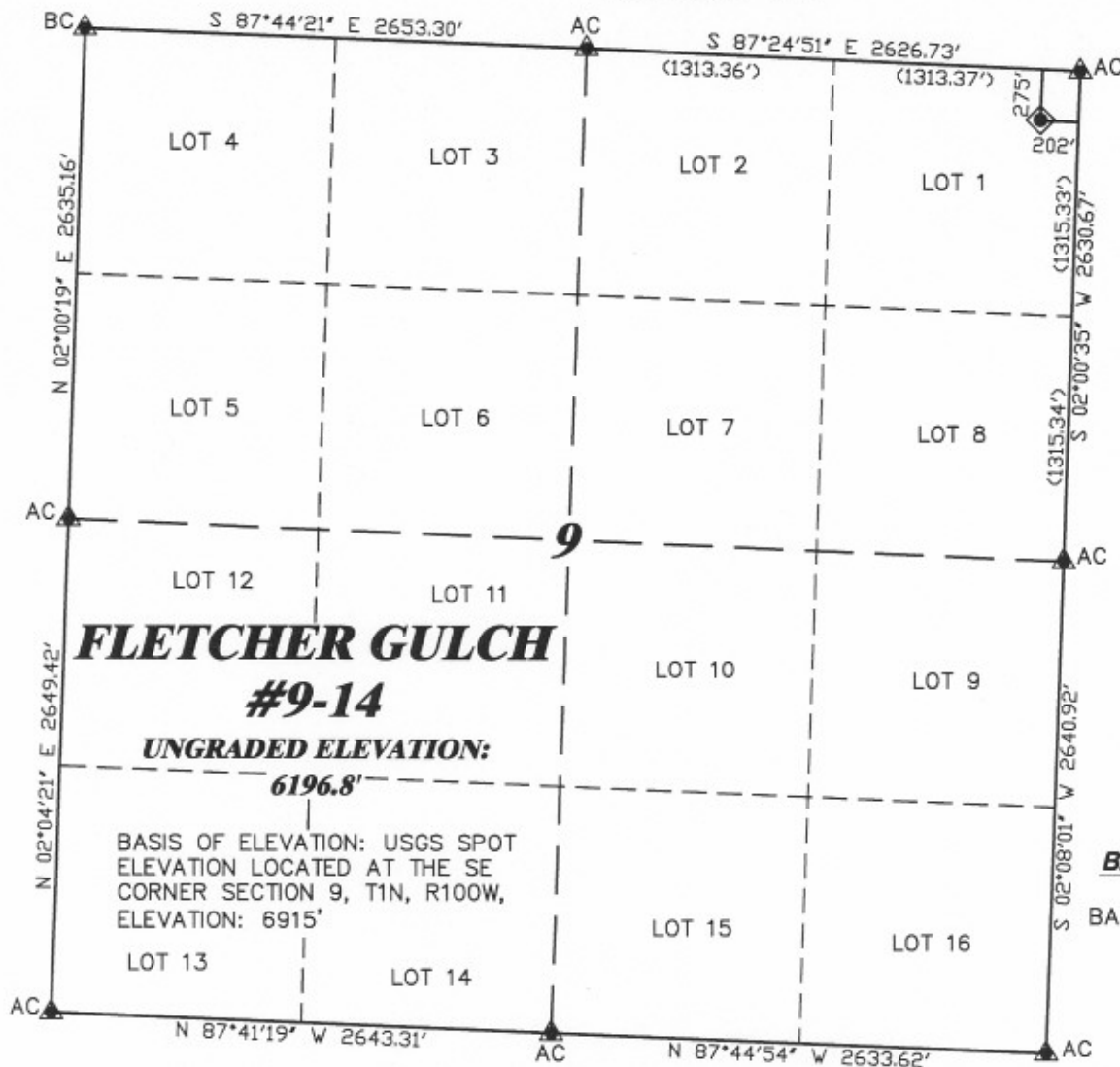


**R. 100 W.**



SCALE 1" = 1000'

**T. 1 N.**



**LATITUDE (NAD 83)**  
NORTH 40.076794 DEG.  
**LONGITUDE (NAD 83)**  
WEST 108.613519 DEG.

**LATITUDE (NAD 27)**  
NORTH 40.076819 DEG.  
**LONGITUDE (NAD 27)**  
WEST 108.612863 DEG.

**NORTHING**  
286113.63  
**EASTING**  
1129058.57

**BASIS OF BEARING/DATUM**  
SPCS CO NORTH NAD 27  
BASED ON NGS TRIANGULATION  
STATION "BOIES"

**SURVEYOR'S STATEMENT**

I, CLEMENT R. WILLIAMS, OF ROCK SPRINGS, WYOMING, HEREBY STATE: THIS MAP WAS MADE FROM NOTES TAKEN DURING AN ACTUAL FIELD SURVEY DONE UNDER MY DIRECT SUPERVISION ON SEPTEMBER 8, 2008 AND THAT THIS PLAT CORRECTLY SHOWS THE LOCATION OF FLETCHER GULCH #9-14 AS STAKED ON THE GROUND.

GPS OPERATOR CHRIS HAMILTON  
OBSERVED A PDOP OF 2.4.  
ALL GPS OBSERVATIONS ARE IN  
COMPLIANCE WITH COGCC RULE No.215.

**NOTES**

HIGH PLATEAU DESERT  
NO EXISTING FEATURES WITHIN  
200' RADIUS OF WELL SITE.

**LEGEND**

- ◆ WELL LOCATION
- CALCULATED CORNER
- FOUND MONUMENT
- ▲ PREVIOUSLY FOUND MONUMENT



**RIFFIN & ASSOCIATES, INC.**  
1414 ELK ST., ROCK SPRINGS, WY 82901

(307) 362-5028

DRAWN: 9/18/08 - MMM

SCALE: 1" = 1000'

REVISED: NA

DRG JOB No. 16960

EXHIBIT 1

**PLAT OF DRILLING LOCATION  
FOR  
GENESIS GAS & OIL LLC.**

**275' F/NL & 202' F/EL, SECTION 9,  
T. 1 N., R. 100 W., 6th P.M.  
RIO BLANCO COUNTY, COLORADO**