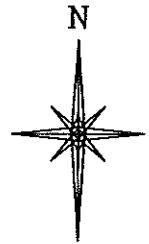
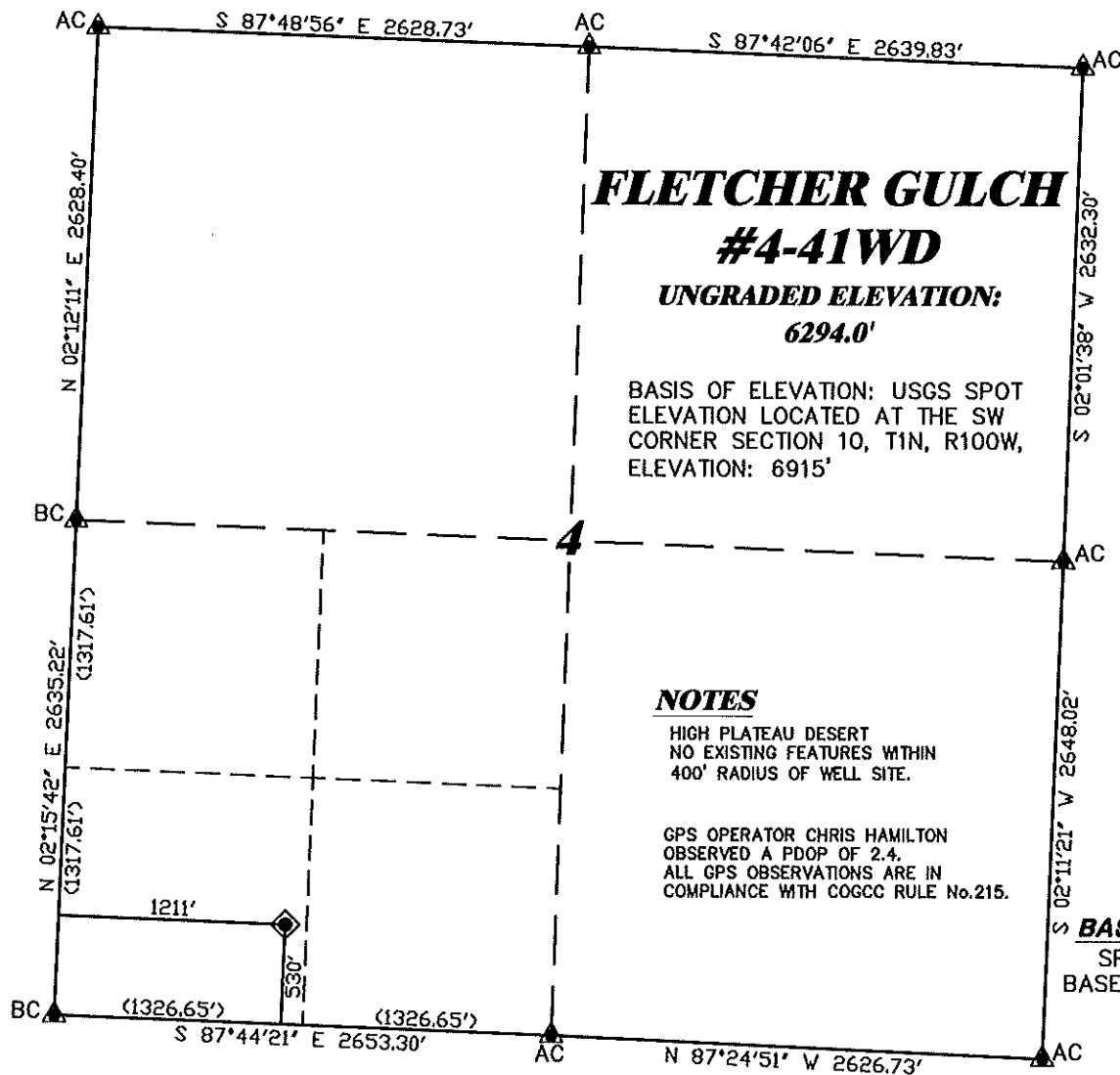


R. 100 W.



SCALE 1" = 1000'

T. 1 N.

FLETCHER GULCH

#4-41WD

UNGRADED ELEVATION:

6294.0'

BASIS OF ELEVATION: USGS SPOT
ELEVATION LOCATED AT THE SW
CORNER SECTION 10, T1N, R100W,
ELEVATION: 6915'

LATITUDE (NAD 83)

NORTH 40.079086 DEG.

LONGITUDE (NAD 83)

WEST 108.627331 DEG.

LATITUDE (NAD 27)

NORTH 40.079111 DEG.

LONGITUDE (NAD 27)

WEST 108.626675 DEG.

NOTES

HIGH PLATEAU DESERT
NO EXISTING FEATURES WITHIN
400' RADIUS OF WELL SITE.

GPS OPERATOR CHRIS HAMILTON
OBSERVED A PDOP OF 2.4.
ALL GPS OBSERVATIONS ARE IN
COMPLIANCE WITH COGCC RULE No.215.

NORTHING

287084.09

EASTING

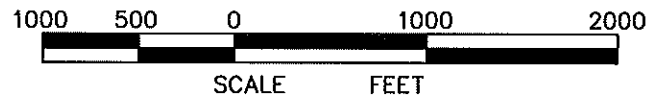
1125225.25

DATUM

SPCS CON (NAD 27)

BASIS OF BEARING/DATUM

SPCS CO NORTH NAD 27
BASED ON NGS TRIANGULATION
STATION "BOIES"

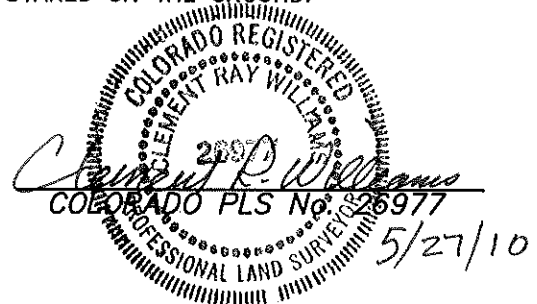


SURVEYOR'S STATEMENT

I, CLEMENT R. WILLIAMS, OF ROCK SPRINGS, WYOMING, HEREBY STATE: THIS MAP WAS MADE FROM NOTES TAKEN DURING AN ACTUAL FIELD SURVEY DONE UNDER MY DIRECT SUPERVISION ON JULY 25, 2008 AND THAT THIS PLAT CORRECTLY SHOWS THE LOCATION OF FLETCHER GULCH #4-41WD AS STAKED ON THE GROUND.

LEGEND

- ◆ WELL LOCATION
- CALCULATED CORNER
- FOUND MONUMENT
- ▲ PREVIOUSLY FOUND MONUMENT



DRG RIFFIN & ASSOCIATES, INC. (907) 362-5028 1414 ELK ST., ROCK SPRINGS, WY 82901	
DRAWN: 8/1/08 - MML	SCALE: 1" = 1000'
REVISED: 5/27/10 - MMM	DRG JOB No. 18512
REVISED NAME	EXHIBIT 1

**PLAT OF DRILLING LOCATION
FOR
GENESIS GAS & OIL LLC.**

**530 F/SL & 1211' F/WL, SECTION 4,
T. 1 N., R. 100 W., 6th P.M.
RIO BLANCO COUNTY, COLORADO**