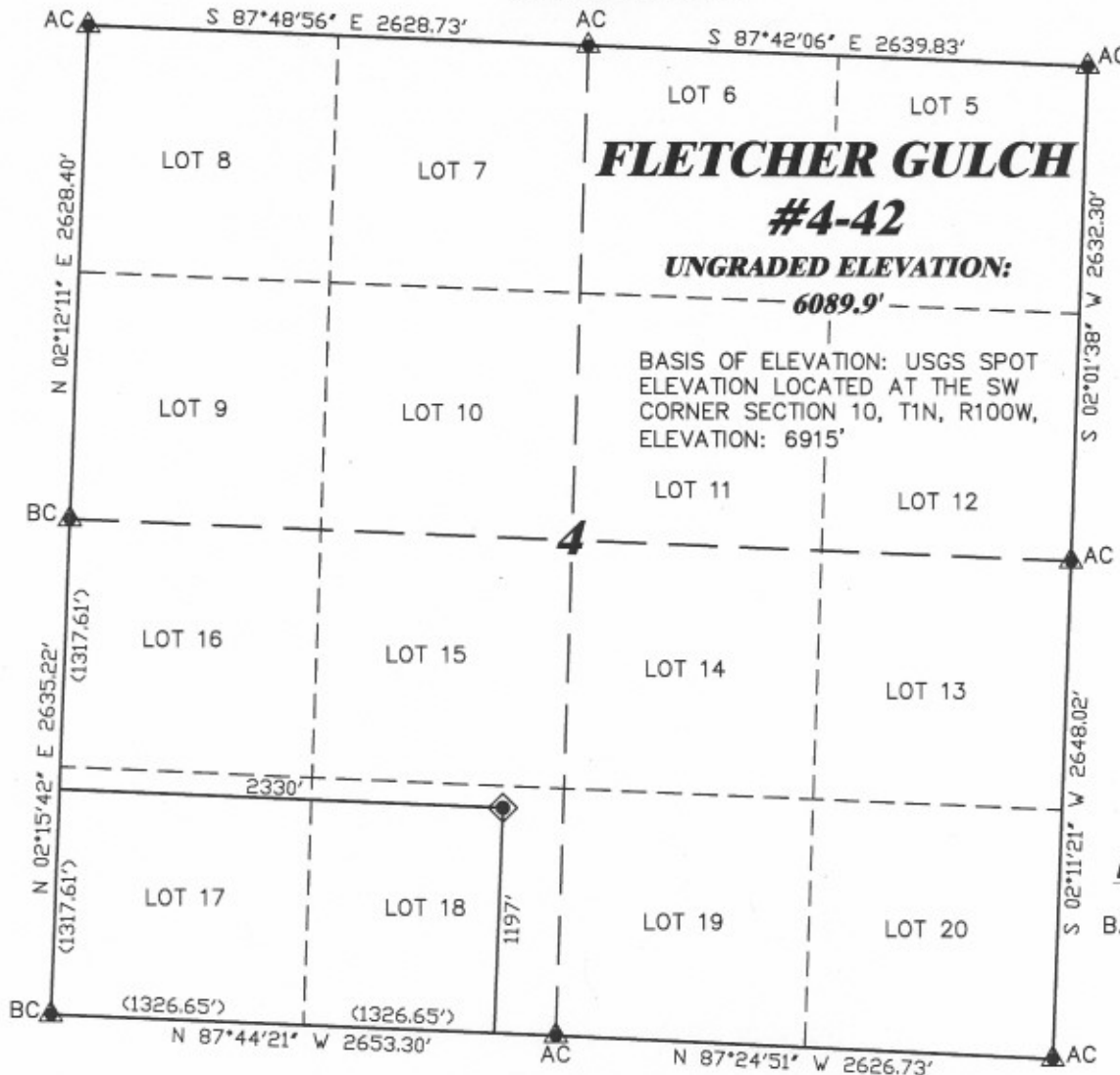


R. 100 W.



SCALE 1" = 1000'

T. 1 N.

LATITUDE (NAD 83)
NORTH 40.080906 DEG.
LONGITUDE (NAD 83)
WEST 108.623321 DEG.

LATITUDE (NAD 27)
NORTH 40.080931 DEG.
LONGITUDE (NAD 27)
WEST 108.622664 DEG.

NORTHING
287706.93
EASTING
1126370.15

BASIS OF BEARING/DATUM
SPCS CO NORTH NAD 27
BASED ON NGS TRIANGULATION
STATION "BOIES"

SURVEYOR'S STATEMENT

I, CLEMENT R. WILLIAMS, OF ROCK SPRINGS, WYOMING, HEREBY STATE: THIS MAP WAS MADE FROM NOTES TAKEN DURING AN ACTUAL FIELD SURVEY DONE UNDER MY DIRECT SUPERVISION ON AUGUST 9, 2008 AND THAT THIS PLAT CORRECTLY SHOWS THE LOCATION OF FLETCHER GULCH #4-42 AS STAKED ON THE GROUND.

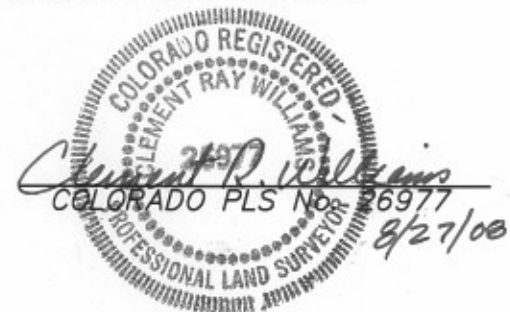
GPS OPERATOR CHRIS HAMILTON
OBSERVED A PDOP OF 2.4.
ALL GPS OBSERVATIONS ARE IN
COMPLIANCE WITH COGCC RULE No.215.

NOTES

HIGH PLATEAU DESERT
NO EXISTING FEATURES WITHIN
200' RADIUS OF WELL SITE.

LEGEND

- ◆ WELL LOCATION
- CALCULATED CORNER
- FOUND MONUMENT
- ▲ PREVIOUSLY FOUND MONUMENT



(307) 362-5028

DRIFFIN & ASSOCIATES, INC.
1414 ELK ST., ROCK SPRINGS, WY 82901

DRAWN: 8/27/08 - MML

SCALE: 1" = 1000'

REVISED: NA

DRG JOB No. 16508

EXHIBIT 1

**PLAT OF DRILLING LOCATION
FOR
GENESIS GAS & OIL LLC.**

**1197' F/SL & 2330' F/WL, SECTION 4,
T. 1 N., R. 100 W., 6th P.M.
RIO BLANCO COUNTY, COLORADO**