

HALLIBURTON**Cementing Job Summary***The Road to Excellence Starts with Safety*

Sold To #: 346707	Ship To #: 2864112	Quote #:	Sales Order #: 8324068
Customer: QUICKSILVER RESOURCES INC-EBUSINESS		Customer Rep: Hord, Ryan	
Well Name: K-Diamond Federal		Well #: 21-21	API/UWI #:
Field:	City (SAP): CRAIG	County/Parish: Moffat	State: Colorado
Legal Description: Section 21 Township 6N Range 92W			
Contractor: DHS		Rig/Platform Name/Num: 6	
Job Purpose: Cement Production Casing			
Well Type: Exploratory / Wildcat		Job Type: Cement Production Casing	
Sales Person: SCOTT, KYLE		Srvc Supervisor: BIRCHELL, DEVIN	MBU ID Emp #: 466993

Job Personnel

HES Emp Name	Exp Hrs	Emp #	HES Emp Name	Exp Hrs	Emp #	HES Emp Name	Exp Hrs	Emp #
BIRCHELL, DEVIN	18	466993	GAMBLES, BRAYDEN	18	469413	HERNANDEZ, AARON	18	489820
Ray			Kade					
STILL, MICHEAL	4	258213	THOMAS, STEPHEN	18	490352			
Wayne			Troy					

Equipment

HES Unit #	Distance-1 way	HES Unit #	Distance-1 way	HES Unit #	Distance-1 way	HES Unit #	Distance-1 way

Job Hours

Date	On Location Hours	Operating Hours	Date	On Location Hours	Operating Hours	Date	On Location Hours	Operating Hours
7-16-11	5	1.5						
TOTAL			Total is the sum of each column separately					

Job**Job Times**

Formation Name	Formation Depth (MD)	Top	Bottom	Called Out	Date	Time	Time Zone
Form Type			BHST	On Location			
Job depth MD	6689. ft		Job Depth TVD	Job Started			
Water Depth			Wk Ht Above Floor	Job Completed			
Perforation Depth (MD)	From	To	4. ft	Departed Loc			

Well Data

Description	New / Used	Max pressure psig	Size in	ID in	Weight lbm/ft	Thread	Grade	Top MD ft	Bottom MD ft	Top TVD ft	Bottom TVD ft
Production Open Hole				6.125				5185.	6690.		
Intermediate Casing	Unknown		7.	6.276	26.		L-80	.	5185.		
Production Casing	Unknown		4.5	3.92	13.5		P-110	.	6689.		

Sales/Rental/3rd Party (HES)

Description	Qty	Qty uom	Depth	Supplier
ZI FUEL SURCHG-CARS/PICKUPS<1 1/2TON	160	MI		
MILEAGE FOR CEMENTING CREW,ZI	160	MI		
SUGAR - GRANULATED	50	LB		

Tools and Accessories

Type	Size	Qty	Make	Depth	Type	Size	Qty	Make	Depth	Type	Size	Qty	Make
Guide Shoe					Packer					Top Plug	4.5	1	HES
Float Shoe	4.5	1		6689	Bridge Plug					Bottom Plug			
Float Collar	4.5	1		6599	Retainer					SSR plug set			
Insert Float										Plug Container	4.5	1	HES
Stage Tool										Centralizers			

Miscellaneous Materials

Gelling Agt	Conc	Surfactant	Conc	Acid Type	Qty	Conc	%
-------------	------	------------	------	-----------	-----	------	---

Summit Version: 7.2.27

Saturday, July 16, 2011 19:44:00

HALLIBURTON

Cementing Job Summary

Treatment Fld	Conc	Inhibitor	Conc	Sand Type	Size	Qty			
Fluid Data									
Stage/Plug #: 1									
Fluid #	Stage Type	Fluid Name	Qty	Qty uom	Mixing Density lbm/gal	Yield ft ³ /sk	Mix Fluid Gal/sk	Rate bbl/min	Total Mix Fluid Gal/sk
1	TUNED SPACER III	TUNED SPACER III - SBM (483826)	20.00	bbl	9.	5.91	41.71	.0	
	39.81 gal/bbl	FRESH WATER							
	0.125 gal/bbl	MUSOL(R) A, BULK (100003696)							
	7.5 lbm/bbl	BARITE, BULK (100003681)							
	0.125 gal/bbl	SEM-7, 55 GAL DRUM (100001626)							
	0.125 gal/bbl	D-AIR 3000L, 5 GAL PAIL (101007444)							
2	Mud Recovery Spacer		75.00	bbl	9.	.0	.0	.0	
	38 lbm/bbl	BARITE, BULK (100003681)							
	31.25 lbm/bbl	HALLIBURTON GEL, 50 LB SK (100084040)							
	0.05 gal/bbl	ANHIB II (100003821)							
3	Mud Flush III		20.00	bbl	9.	.0	.0	.0	
	4 lbm/bbl	MUD FLUSH III, 40 LB SACK (101633304)							
	42 gal/bbl	FRESH WATER							
4	LifeCem	LIFECM (TM) CEMENT (532084)	165.0	sacks	13.5	1.73	7.31		7.31
	5 %	WELLIFE-809, 40 LB BAG (101589727)							
	1 %	CAL-SEAL 60, 50 LB BAG (101217146)							
	0 %	CFR-3, W/O DEFOAMER, 50 LB SK (100003653)							
	0.5 %	HALAD(R)-344, 50 LB (100003670)							
	0.2 %	HR-601, 50 LB BAG (101328348)							
	1 %	MICROBOND HT, 50 LB SK (100003723)							
	22.86 %	SAND-SSA-1 - SILICA FLOUR - 200 MESH, 50 LB (100003796)							
	5 %	CHEM - WELLIFE ₂ 665, 44 LB SACK (101492081)							
	7.31 Gal	FRESH WATER							
5	KCl Displacement		98.00	bbl	8.4	.0	.0	5.0	
	7.15 lbm/bbl	POTASSIUM CHLORIDE 7% (100001585)							
	42 gal/bbl	WATER - FRESH - GAL (24047)							
Calculated Values		Pressures		Volumes					
Displacement		Shut In: Instant		Lost Returns		Cement Slurry		Pad	
Top Of Cement		5 Min		Cement Returns		Actual Displacement		Treatment	
Frac Gradient		15 Min		Spacers		Load and Breakdown		Total Job	
Rates									
Circulating		Mixing		Displacement		Avg. Job			
Cement Left In Pipe	Amount	40 ft	Reason	Shoe Joint					
Frac Ring # 1 @	ID	Frac ring # 2 @	ID	Frac Ring # 3 @	ID	Frac Ring # 4 @	ID		
The Information Stated Herein Is Correct				Customer Representative Signature					

HALLIBURTON**Cementing Job Log***The Road to Excellence Starts with Safety*

Sold To #: 346707	Ship To #: 2864112	Quote #:	Sales Order #: 8324068
Customer: QUICKSILVER RESOURCES INC-EBUSINESS		Customer Rep: Hord, Ryan	
Well Name: K-Diamond Federal	Well #: 21-21	API/UWI #:	
Field:	City (SAP): CRAIG	County/Parish: Moffat	State: Colorado
Legal Description: Section 21 Township 6N Range 92W			
Lat:		Long:	
Contractor: DHS		Rig/Platform Name/Num: 6	
Job Purpose: Cement Production Casing		Ticket Amount:	
Well Type: Exploratory / Wildcat		Job Type: Cement Production Casing	
Sales Person: SCOTT, KYLE		Srvs Supervisor: BIRCHELL, DEVIN	MBU ID Emp #: 466993

Activity Description	Date/Time	Cht #	Rate bbl/ min	Volume bbl		Pressure psig		Comments
				Stage	Total	Tubing	Casing	
Call Out	07/16/2011 02:00							Called out for Job
Pre-Convoy Safety Meeting	07/16/2011 03:20							Discussed Hazards In Route to Location
Depart Location for Service Center or Other Site	07/16/2011 03:30							
Arrive At Loc	07/16/2011 06:30							
Wait on Customer or Customer Sub-Contractor Equip	07/16/2011 06:40							
Pre-Rig Up Safety Meeting	07/16/2011 15:00							
Rig-Up Completed	07/16/2011 16:30							
Pre-Job Safety Meeting	07/16/2011 16:45							
Pressure Test	07/16/2011 17:10						5000.0	Pressure Tested Pump and Lines to 5000 psi
Pump Spacer	07/16/2011 17:14		2	20	20		240.0	Pumped 20 bbls Tuned Spacer III
Pump Spacer 1	07/16/2011 17:30		4	65	85		380.0	Pumped 65 bbls Mud Recovery
Pump Spacer 2	07/16/2011 17:43		4	20	105		260.0	Pumped 20 bbls Mud Flush III
Pump Cement	07/16/2011 17:54		5	50	155		280.0	50 bbls Slurry @ 13.5 ppg Yield 1.73 Water 7.31 gal/sk
Clean Lines	07/16/2011 18:09							Cleaned Pump and Lines
Drop Plug	07/16/2011 18:15							
Pump Displacement	07/16/2011 18:16		8	98	253		800.0	

Sold To #: 346707

Ship To #: 2864112

Quote #:

Sales Order #:

8324068

SUMMIT Version: 7.2.27

Saturday, July 16, 2011 07:44:00

HALLIBURTON***Cementing Job Log***

Activity Description	Date/Time	Cht #	Rate bbl/ min	Volume bbl		Pressure psig		Comments
				Stage	Total	Tubing	Casing	
Bump Plug	07/16/2011 18:32		3				1800. 0	Bumped Plug at 1100 psi Went to 1800 psi
Check Floats	07/16/2011 18:34							Called out for Job
Pre-Rig Down Safety Meeting	07/16/2011 18:40							
Rig-Down Completed	07/16/2011 19:20							
Pre-Convoy Safety Meeting	07/16/2011 19:35							
Depart Location for Service Center or Other Site	07/16/2011 19:50							

Sold To #: 346707

Ship To #: 2864112

Quote #:

Sales Order #: 8324068

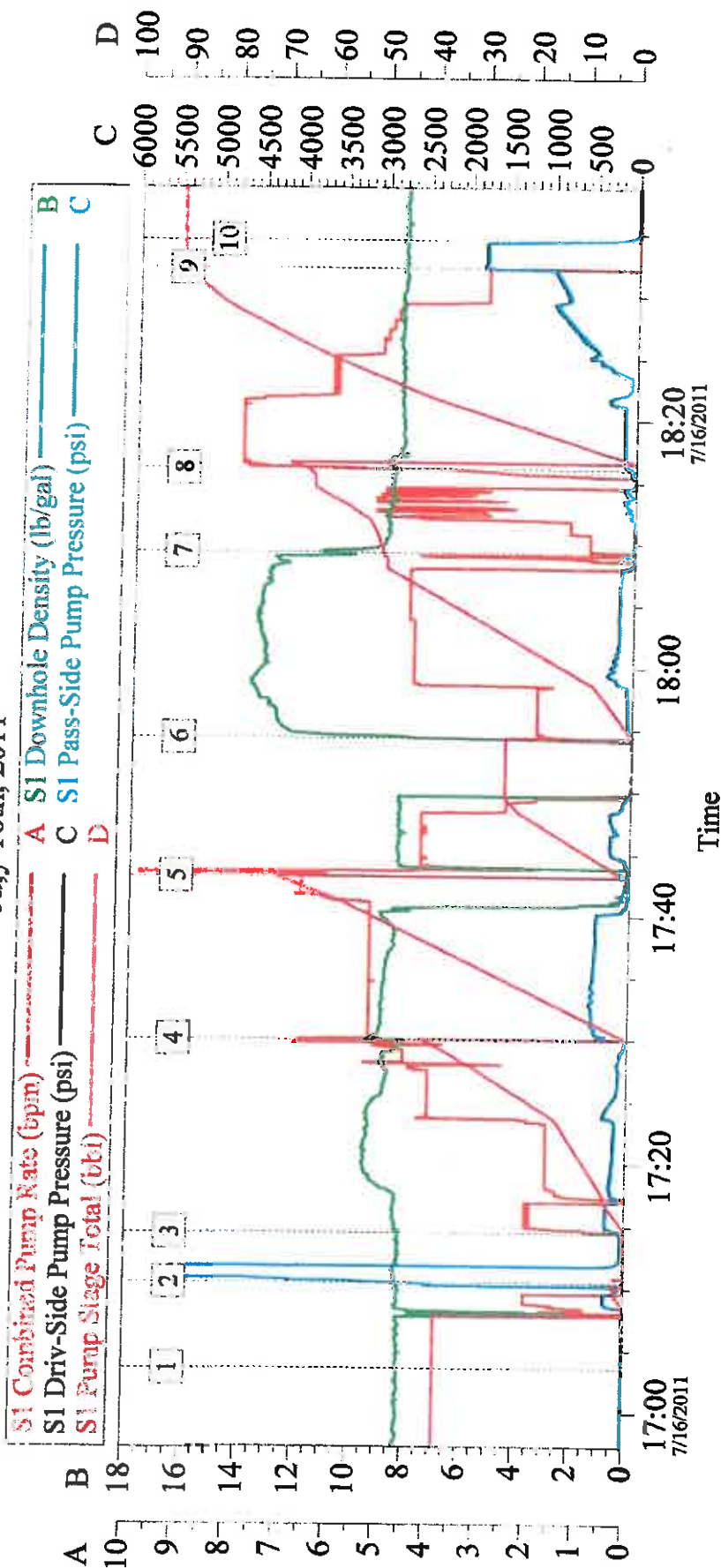
SUMMIT Version: 7.2.27

Saturday, July 16, 2011 07:44:00

Quicksilver Resources K-Diamond 21-21

4.5 Production

July 16th, 2011



Global Event Log

1 Starting Job	17:03:31	2 Pressure Test	17:10:27	3 Pump Spacer	17:14:31
4 Pump Spacer 1	17:30:00	5 Pump Spacer 2	17:43:08	6 Pump Cement	17:54:16
7 Clean Lines	18:09:14	8 Pump Displacement	18:16:00	9 Bump Plug	18:32:10
10 Check Floats	18:34:24				

Customer:

Job Date: 16-Jul-2011

Sales Order #: 8324068

Well Description:

UWI:

OptiCem v6.4.9
16-Jul-11 18:43