
WILLIAMS PRODUCTION RMT INC EBUSINE

**GM 313-26
GRAND VALLEY
Garfield County , Colorado**

Cement Surface Casing
11-Feb-2011

Post Job Report

The Road to Excellence Starts with Safety

Sold To #: 300721	Ship To #: 2835181	Quote #:	Sales Order #: 7949306
Customer: WILLIAMS PRODUCTION RMT INC EBUSINE	Customer Rep: Wilson, W.C		
Well Name: GM	Well #: 313-26	API/UWI #: 05-045-19661	
Field: GRAND VALLEY	City (SAP): PARACHUTE	County/Parish: Garfield	State: Colorado
Lat: N 39.493 deg. OR N 39 deg. 29 min. 35.819 secs.	Long: W 108.09 deg. OR W -109 deg. 54 min. 36.389 secs.		
Contractor: H&P 280	Rig/Platform Name/Num: H&P 280		
Job Purpose: Cement Surface Casing			
Well Type: Development Well	Job Type: Cement Surface Casing		
Sales Person: KOHL, KYLE	Srvc Supervisor: HOEFER, BRYAN	MBU ID Emp #: 415775	

Job Personnel

HES Emp Name	Exp Hrs	Emp #	HES Emp Name	Exp Hrs	Emp #	HES Emp Name	Exp Hrs	Emp #
BANKS, BRENT A	8	371353	BECK, MICHAEL George	8	489151	COSTELDIA, BROCK James	8	476115
HOEFER, BRYAN D	8	415775						

Equipment

HES Unit #	Distance-1 way	HES Unit #	Distance-1 way	HES Unit #	Distance-1 way	HES Unit #	Distance-1 way
10296152C	60 mile	10592964	60 mile	10744549	60 mile	10897797	60 mile
11259885	60 mile						

Job Hours

Date	On Location Hours	Operating Hours	Date	On Location Hours	Operating Hours	Date	On Location Hours	Operating Hours
2/11/11	8	1						

TOTAL Total is the sum of each column separately

Job

Formation Name	Top	Bottom	Called Out	Date	Time	Time Zone
Formation Depth (MD)			On Location	11 - Feb - 2011	04:30	MST
Form Type		BHST	Job Started	11 - Feb - 2011	08:30	MST
Job depth MD	1055. ft	Job Depth TVD	Job Completed	11 - Feb - 2011	13:41	MST
Water Depth		Wk Ht Above Floor		11 - Feb - 2011	14:19	MST
Perforation Depth (MD)	From	To	Departed Loc			

Well Data

Description	New / Used	Max pressure psig	Size in	ID in	Weight lbm/ft	Thread	Grade	Top MD ft	Bottom MD ft	Top TVD ft	Bottom TVD ft
-------------	------------	-------------------	---------	-------	---------------	--------	-------	-----------	--------------	------------	---------------

Sales/Rental/3rd Party (HES)

Description	Qty	Qty uom	Depth	Supplier
PLUG,CMTG,TOP,9 5/8,HWE,8.16 MIN/9.06 MA	1	EA		

Tools and Accessories

Type	Size	Qty	Make	Depth	Type	Size	Qty	Make	Depth	Type	Size	Qty	Make
Guide Shoe					Packer					Top Plug	9.625"	1	
Float Shoe					Bridge Plug					Bottom Plug			
Float Collar					Retainer					SSR plug set			
Insert Float										Plug Container	9.625"	1	
Stage Tool										Centralizers			

Miscellaneous Materials

Gelling Agt	Conc	Surfactant	Conc	Acid Type	Qty	Conc	%
Treatment Fld	Conc	Inhibitor	Conc	Sand Type	Size	Qty	

Fluid Data

Stage/Plug #: 1	Fluid #	Stage Type	Fluid Name	Qty	Qty uom	Mixing Density lbm/gal	Yield ft ³ /sk	Mix Fluid Gal/sk	Rate bbl/min	Total Mix Fluid Gal/sk
-----------------	---------	------------	------------	-----	---------	------------------------	---------------------------	------------------	--------------	------------------------

Stage/Plug #: 1									
Fluid #	Stage Type	Fluid Name	Qty	Qty uom	Mixing Density lbm/gal	Yield ft ³ /sk	Mix Fluid Gal/sk	Rate bbl/min	Total Mix Fluid Gal/sk
1	Water Spacer		20.00	bbl	8.4	.0	.0	8	
2	VersaCem Lead Cement	VERSACEM (TM) SYSTEM (452010)	120.0	sacks	12.3	2.38	13.75	8	13.75
3	VersaCem Tail Cement	VERSACEM (TM) SYSTEM (452010)	160.0	sacks	12.8	2.11	11.76	8	11.76
0.333 Gal		FRESH WATER							
4	Displacement Fluid		78.6	bbl	8.4	.0	.0	10	
Calculated Values		Pressures		Volumes					
Displacement	78.6	Shut In: Instant		Lost Returns	0	Cement Slurry	110.9	Pad	
Top Of Cement	SURFACE	5 Min		Cement Returns	20	Actual Displacement	78.6	Treatment	
Frac Gradient		15 Min		Spacers	20	Load and Breakdown		Total Job	
Rates									
Circulating	8	Mixing	8	Displacement	10	Avg. Job	9		
Cement Left In Pipe	Amount	41 ft	Reason	Shoe Joint					
Frac Ring # 1 @	ID	Frac ring # 2 @	ID	Frac Ring # 3 @	ID	Frac Ring # 4 @	ID		
The Information Stated Herein Is Correct				Customer Representative Signature					

The Road to Excellence Starts with Safety

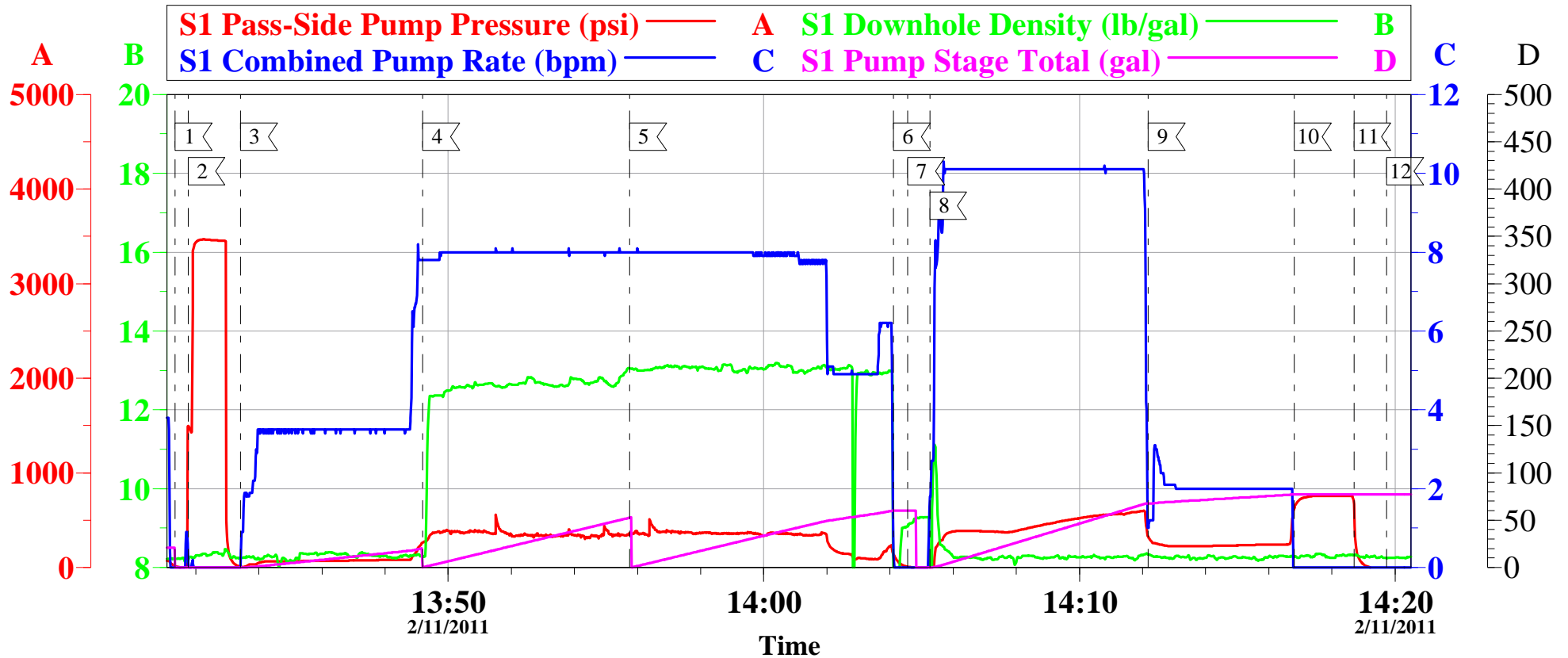
Sold To #: 300721	Ship To #: 2835181	Quote #:	Sales Order #: 7949306
Customer: WILLIAMS PRODUCTION RMT INC EBUSINE		Customer Rep: Wilson, W.C	
Well Name: GM	Well #: 313-26	API/UWI #: 05-045-19661	
Field: GRAND VALLEY	City (SAP): PARACHUTE	County/Parish: Garfield	State: Colorado
Legal Description:			
Lat: N 39.493 deg. OR N 39 deg. 29 min. 35.819 secs.		Long: W 108.09 deg. OR W -109 deg. 54 min. 36.389 secs.	
Contractor: H&P 280		Rig/Platform Name/Num: H&P 280	
Job Purpose: Cement Surface Casing			Ticket Amount:
Well Type: Development Well		Job Type: Cement Surface Casing	
Sales Person: KOHL, KYLE		Srv Supervisor: HOEFER, BRYAN	MBU ID Emp #: 415775

Activity Description	Date/Time	Cht #	Rate bbl/min	Volume bbl		Pressure psig		Comments
				Stage	Total	Tubing	Casing	
Call Out	02/11/2011 04:30							
Pre-Convoy Safety Meeting	02/11/2011 07:00							WITH ALL HES EE'S
Depart from Service Center or Other Site	02/11/2011 07:05							
Arrive At Loc	02/11/2011 08:30							ARRIVED 1.5 HRS EARLY, PULLING DRILL PIPE UPON ARRIVAL
Assessment Of Location Safety Meeting	02/11/2011 09:30							WITH ALL HES EE'S
Pre-Rig Up Safety Meeting	02/11/2011 09:40							WITH ALL HES EE'S
Rig-Up Equipment	02/11/2011 09:45							IRON TO FLOOR, WATER LINES, 1 660 BULK TRUCK, F-550
Pre-Job Safety Meeting	02/11/2011 13:30							WITH ALL HES EE'S AND RIG CREW
Start Job	02/11/2011 13:41							TD-1055', TP-1039.1', SJ-41, MUD-10.1#, OH-13.5", 9 5/8" CASING 32.3#
Prime Pumps	02/11/2011 13:41		2	2			85.0	FRESH WATER
Test Lines	02/11/2011 13:41		0.5	0.5			3500.0	TESTED TO 3500psi, TEST HELD GREAT
Pump Spacer	02/11/2011 13:43		8	20			265.0	FRESH WATER
Pump Lead Cement	02/11/2011 13:49		8	50.8			390.0	120sks OF VERSACEM PUMPED @ 12.3#, 2.38 ft3/sk, 13.75 gal/sk
Pump Tail Cement	02/11/2011 13:55		8	60.1			400.0	160sks OF VERSACEM PUMPED @ 12.8#, 2.11 ft3/sk, 11.75 gal/sk

Activity Description	Date/Time	Cht #	Rate bbl/min	Volume bbl		Pressure psig		Comments
				Stage	Total	Tubing	Casing	
Shutdown	02/11/2011 14:04							
Drop Top Plug	02/11/2011 14:04							COMPANY REP. VERIFIED PLUG LEFT HEAD
Pump Displacement	02/11/2011 14:05		10	78.6			590.0	FRESH WATER
Slow Rate	02/11/2011 14:12		2	68			245.0	LAST 10 BBLS
Bump Plug	02/11/2011 14:16		2	78.6			765.0	TOOK 500psi OVER
Check Floats	02/11/2011 14:18							FLOATS HELD
End Job	02/11/2011 14:19							GOOD RETURNS THROUGHOUT JOB, 20 BBLS BACK TO THE PIT
Post-Job Safety Meeting (Pre Rig-Down)	02/11/2011 14:20							WITH ALL HES EE'S
Rig-Down Equipment	02/11/2011 15:30							
Pre-Convoy Safety Meeting	02/11/2011 16:00							WITH ALL HES EE'S
Depart Location for Service Center or Other Site	02/11/2011 16:05							THANK YOU FOR USING GRAND JUNCTION HALLIBURTON CEMENT, BRYAN HOEFER AND CREW

WILLIAMS

GM-313-26, SURFACE



Local Event Log							
Maximum			SPPP	Maximum			SPPP
1	START JOB	13:41:21	1494	2	TEST LINES	13:41:46	3468
3	PUMP SPACER	13:43:25	265.3	4	PUMP LEAD CEMENT	13:49:12	559.3
5	PUMP TAIL CEMENT	13:55:45	508.3	6	SHUT DOWN	14:04:07	151.3
7	DROP TOP PLUG	14:04:34	8.304	8	PUMP DISPLACEMENT	14:05:16	600.3
9	SLOW RATE	14:12:11	627.2	10	BUMP PLUG	14:16:48	758.3
11	CHECK FLOATS	14:18:42	715.3	12	END JOB	14:19:44	-10.70

Customer: WILLIAMS	Job Date: 11-Feb-2011	Sales Order #: 7949306
Well Description: GM-313-26	Job type: SURFACE	ADC Used: YES
Customer Rep: W. C. WILSON	Service Supervisor: BRYAN HOEFER	Operator/ Pump: BANKS/ #6

OptiCem v6.4.9
11-Feb-11 14:26