

Company Pioneer Natural Resources
Well Bilbo Federal 11-24
Field Purgatorie River
County Las Animas
State CO

Company Pioneer Natural Resources
Well Bilbo Federal 11-24
Field Purgatorie River
County Las Animas State CO

Location: API #: 05 071 09804 00
592' FNL & 264' FWL
SEC 24 TWP 32S RGE 66W
Permanent Datum Ground Level Elevation 7570
Log Measured From Kelly Bushing 9 AGL
Drilling Measured From Kelly Bushing
Other Services
DEVI
Elevation
K.B. 7579
D.F.
G.L. 7570

Date	12-13-11									
Run Number	1									
Depth Driller	2390									
Depth Logger	2335									
Bottom Logged Interval	2330									
Top Log Interval	surface									
Open Hole Size	7 7/8									
Type Fluid	water									
Density / Viscosity	///									
Max. Recorded Temp.	///									
Estimated Cement Top	130									
Time Well Ready	18:00									
Time Logger on Bottom	18:17									
Equipment Number	T440									
Location	Trinidad									
Recorded By	T. Patterson									
Witnessed By	C. Adam									
Borehole Record					Tubing Record					
Run Number	Bit	From	To	Size	Weight	From	To			
Casing Record					Size	Wgt/Ft	Top	Bottom		
Surface String					8 5/8		0	921		
Prot. String										
Production String					5 1/2		921	TD		
Liner										

<<< Fold Here >>>

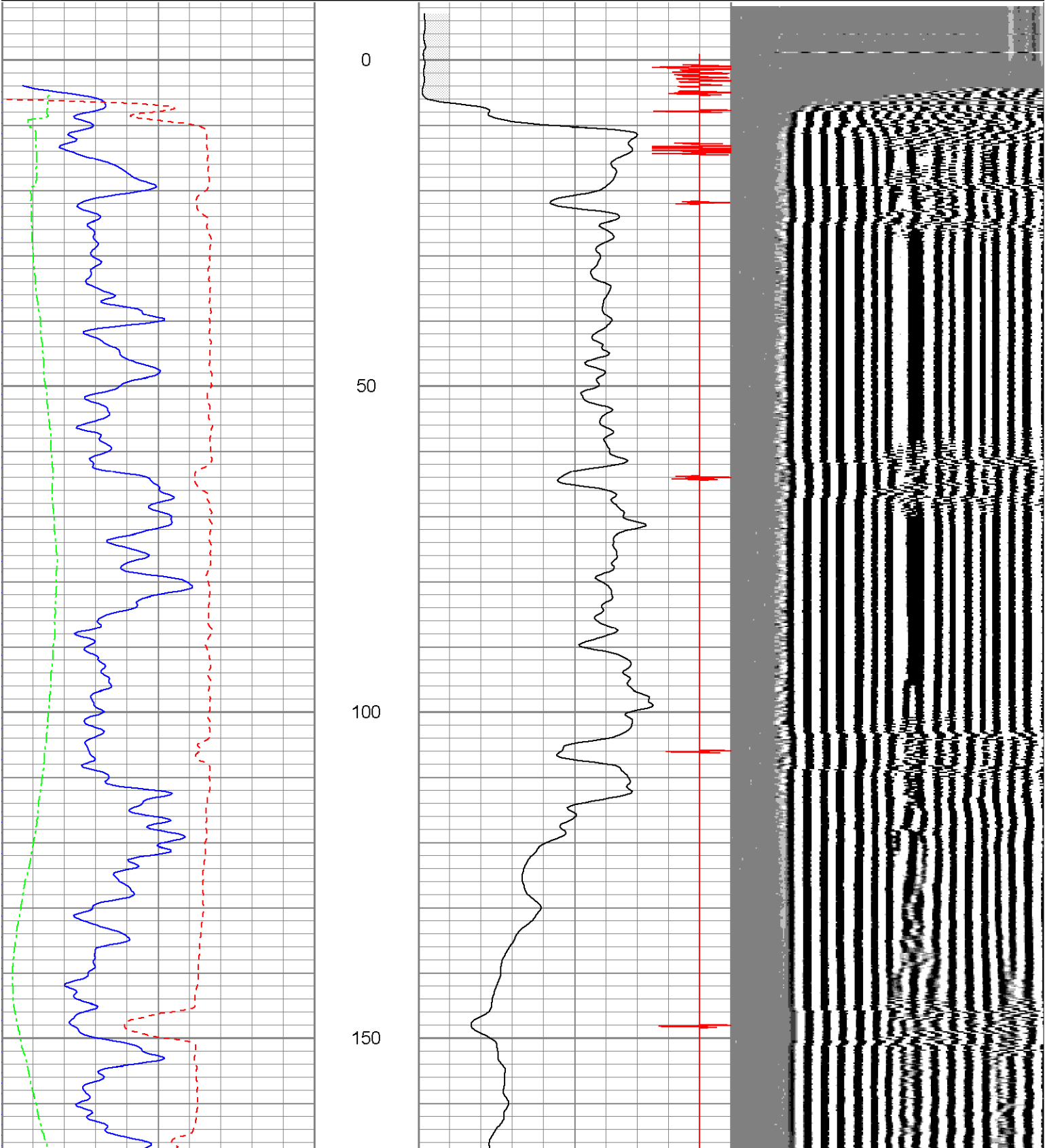
All interpretations are opinions based on inferences from electrical or other measurements and we cannot and do not guarantee the accuracy or correctness of any interpretation, and we shall not, except in the case of gross or willful negligence on our part, be liable or responsible for any loss, costs, damages, or expenses incurred or sustained by anyone resulting from any interpretation made by any of our officers, agents or employees. These interpretations are also subject to our general terms and conditions set out in our current Price Schedule.

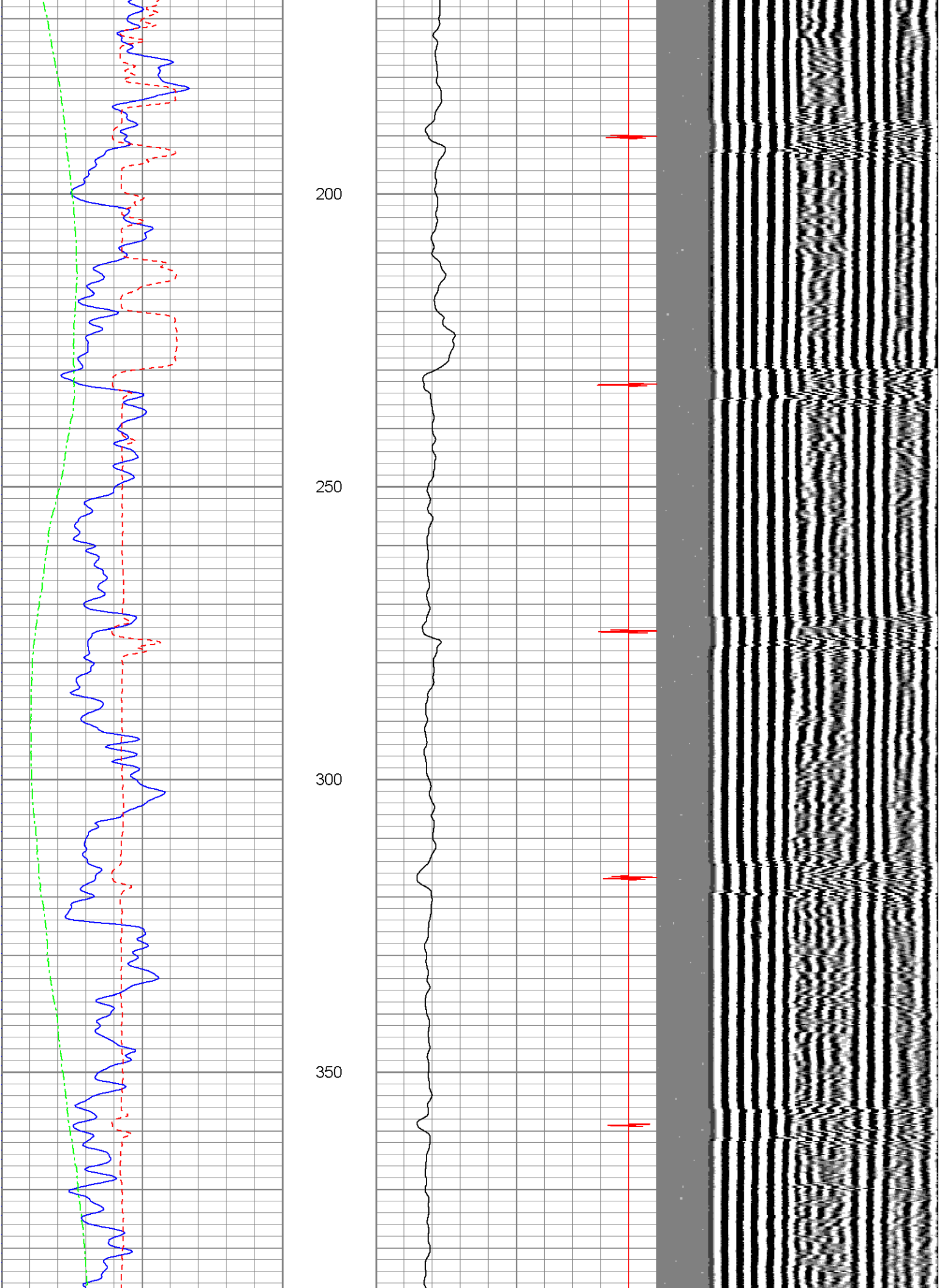
Comments

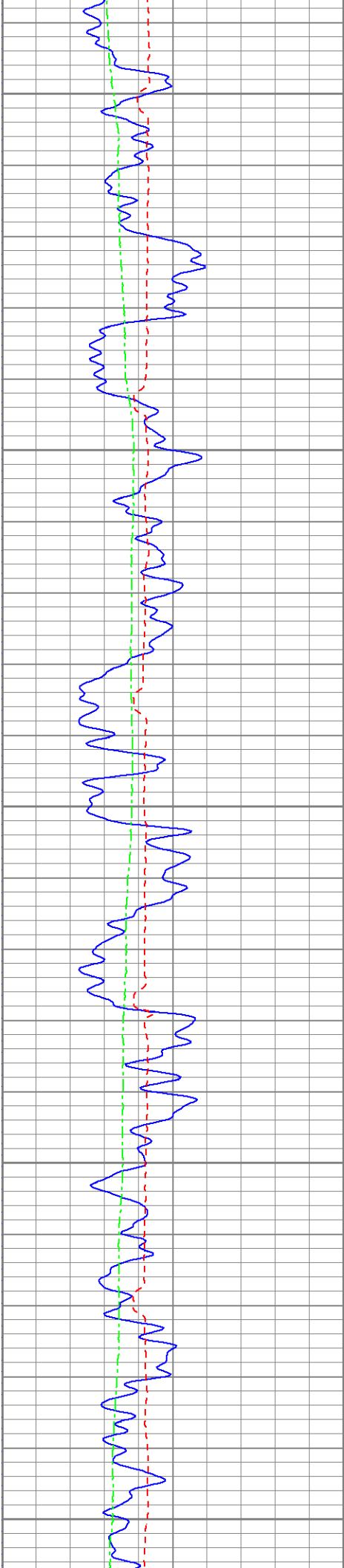
Main Pass (1000 PSI)

Database File: bilbofederal11-24cbl.db
Dataset Pathname: merge3.11
Presentation Format: cbl
Dataset Creation: Tue Dec 13 23:08:51 2011
Charted by: Depth in Feet scaled 1:240

0	GR (GAPI)	200	18	CCL	-2	200	VDL	1200
200	GR (GAPI)	400	0	AMP3 (mV)	100			
400	TT3 (usec)	200						
0	DEVI (°)	10						







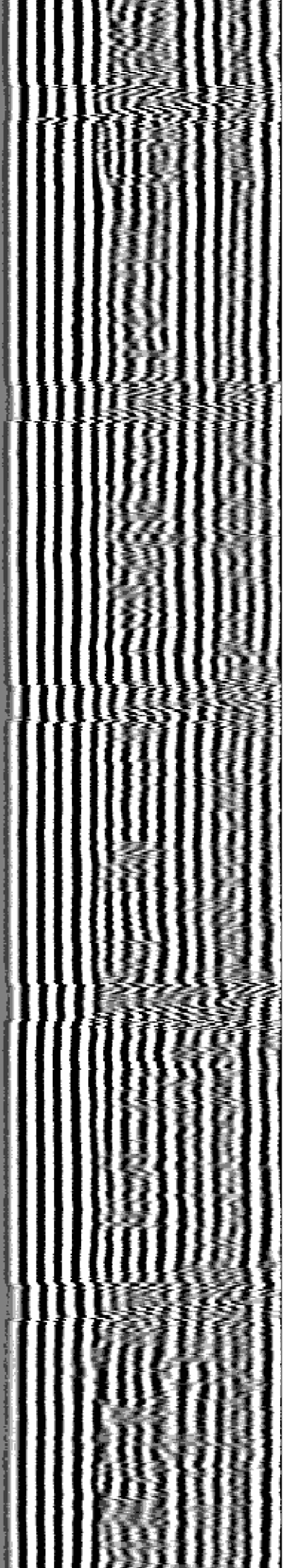
400

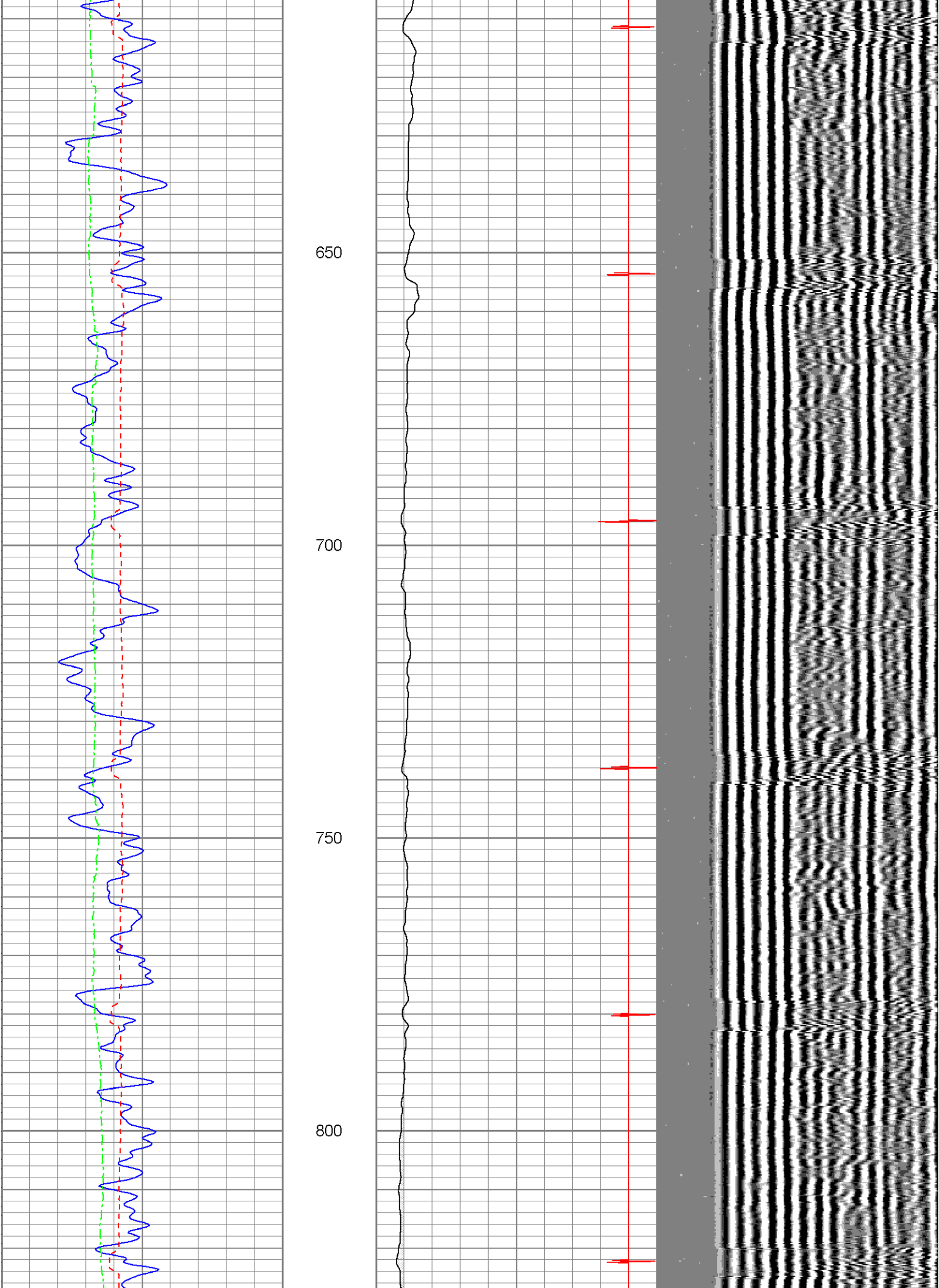
450

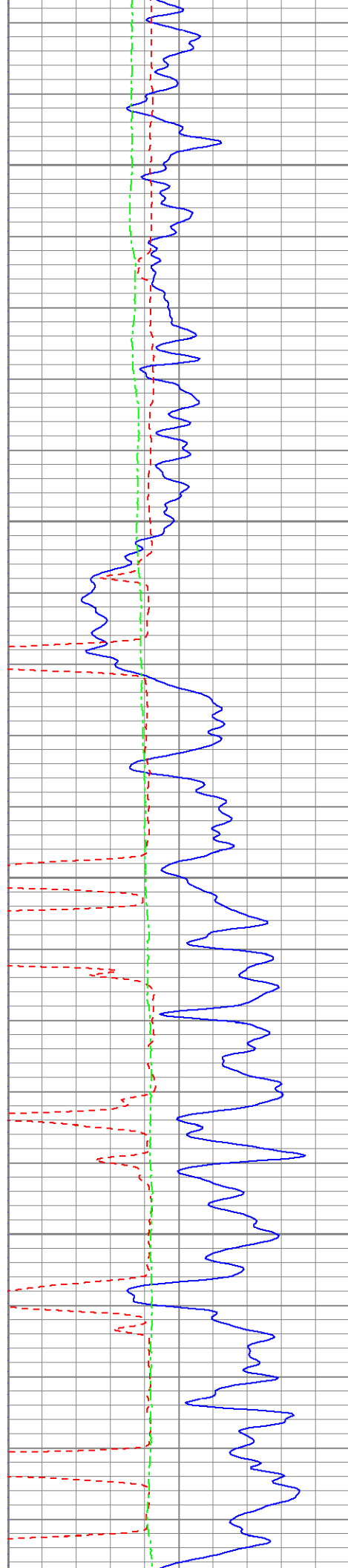
500

550

600





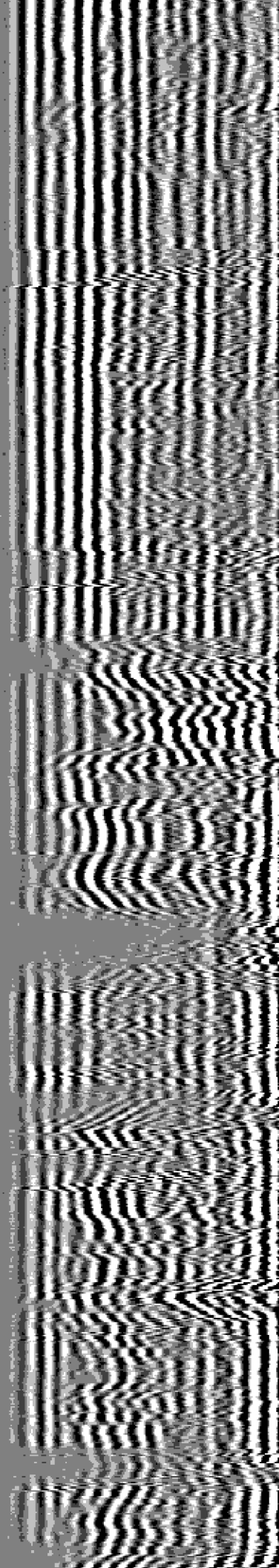
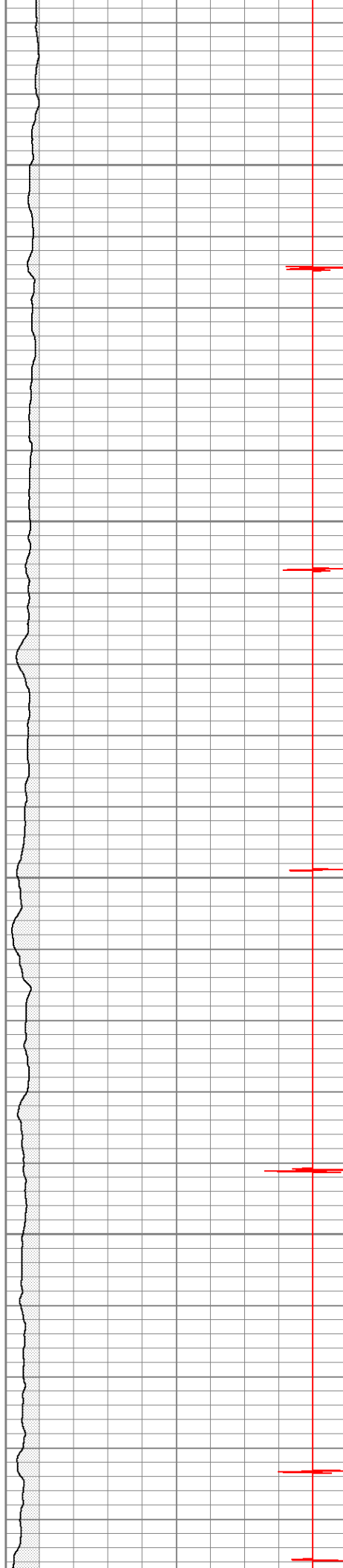


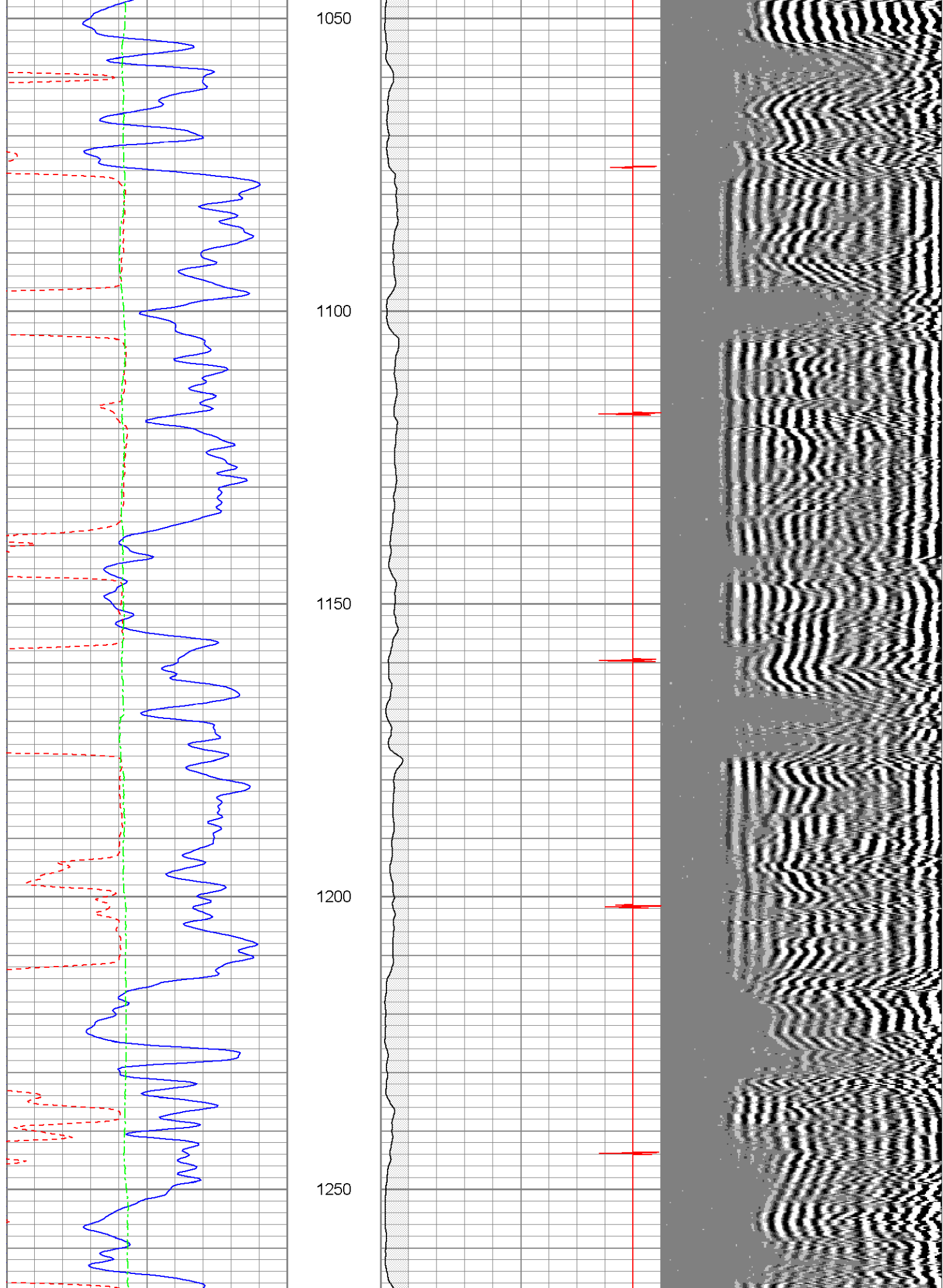
850

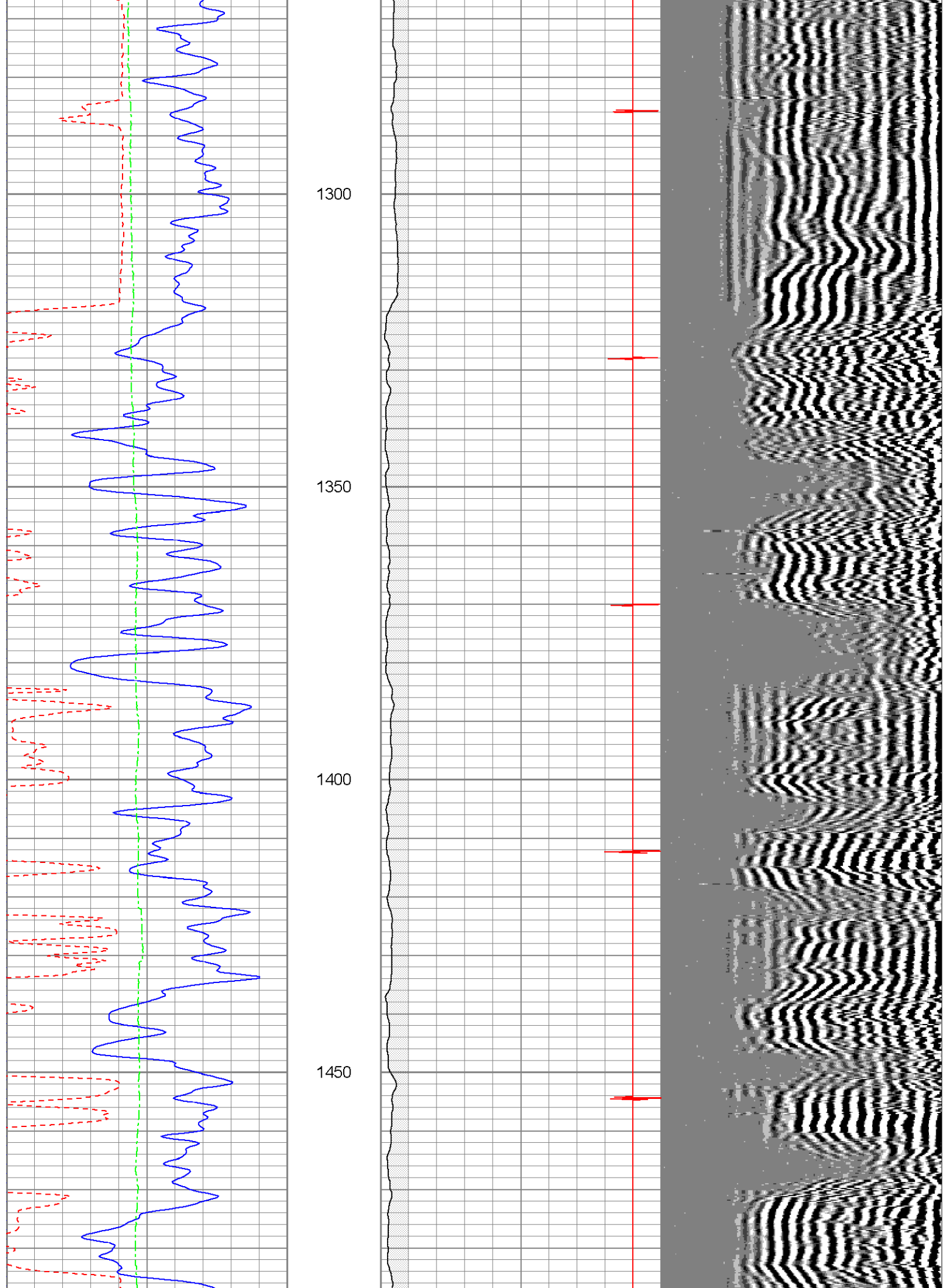
900

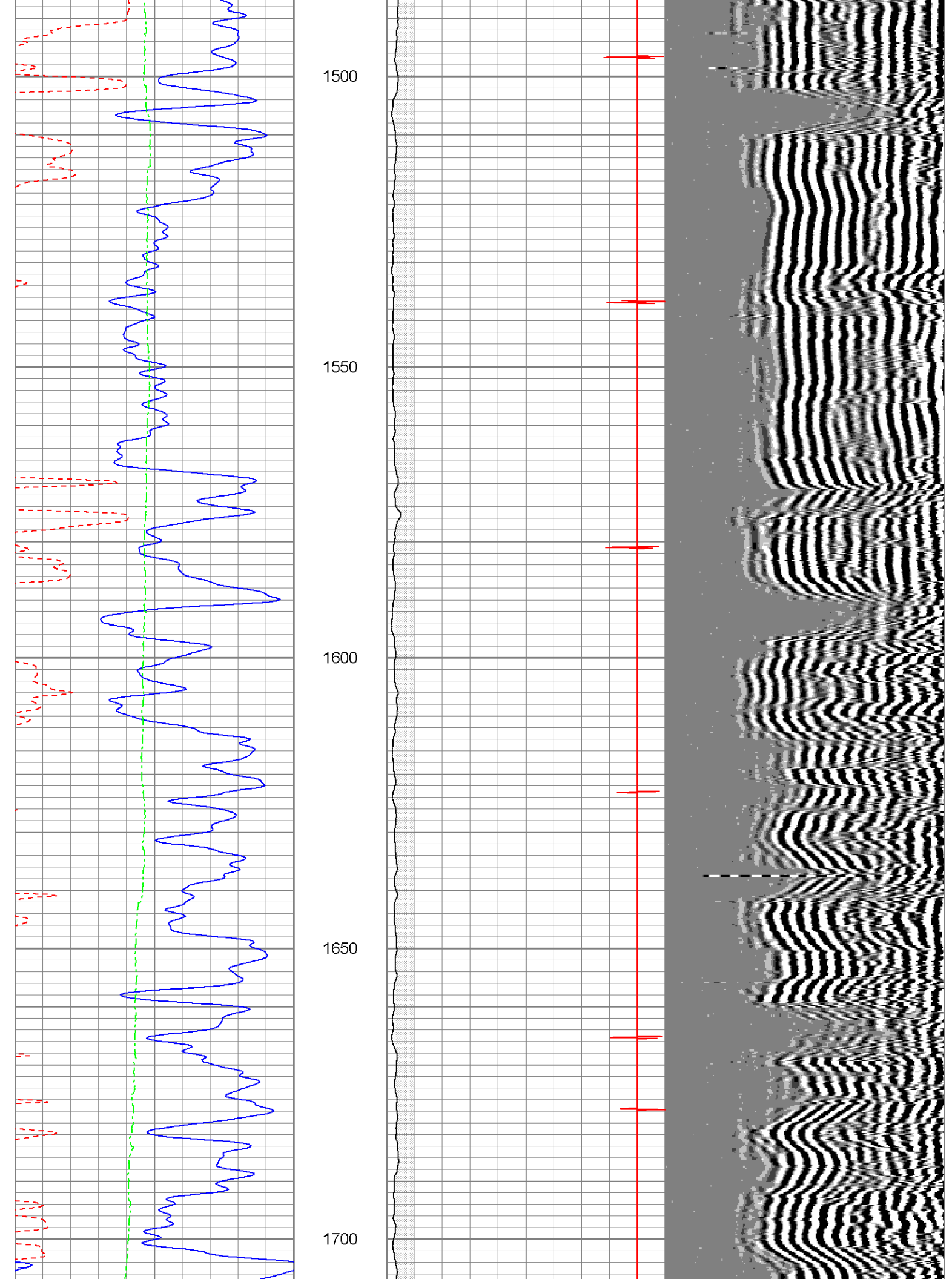
950

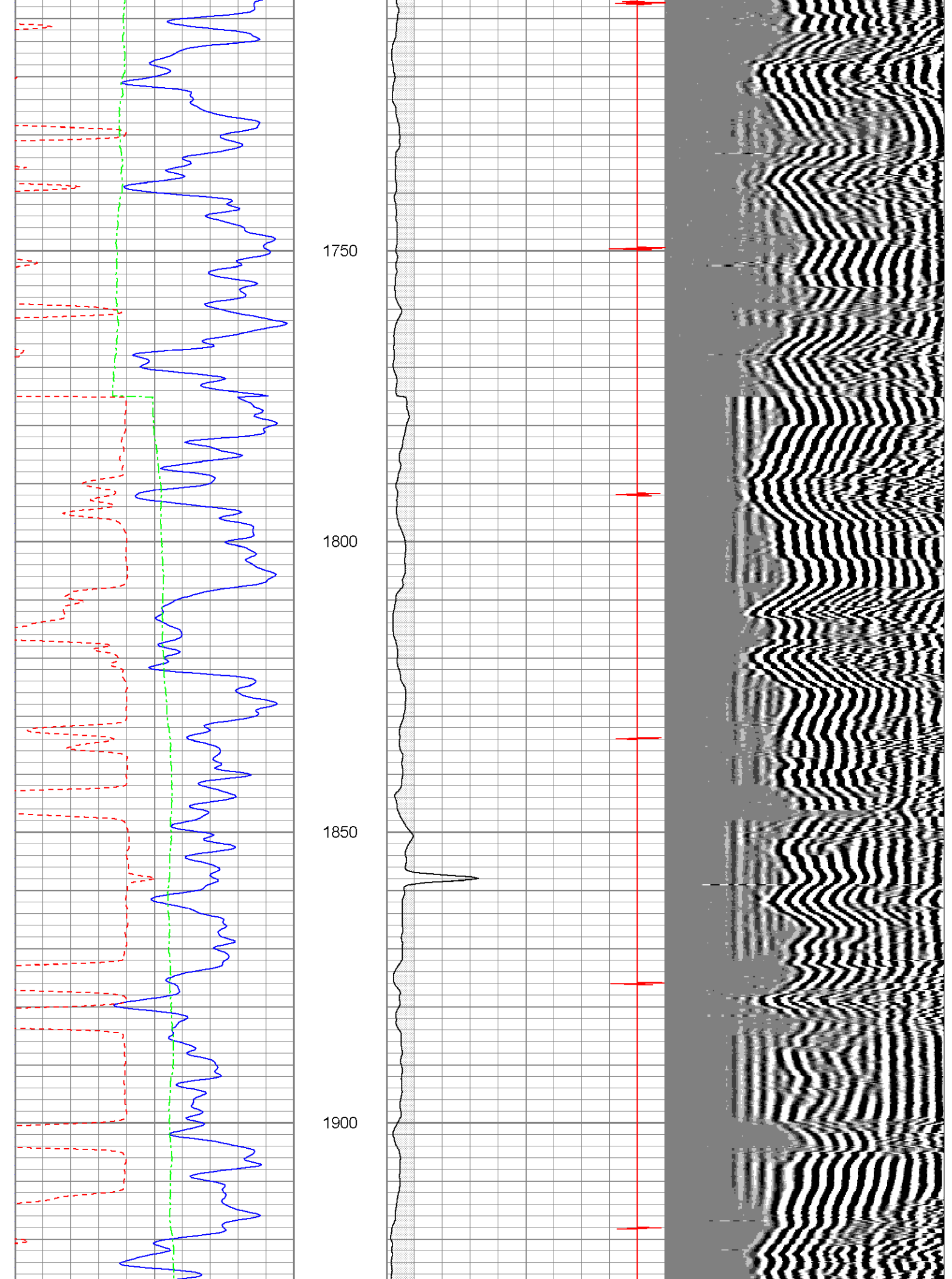
1000

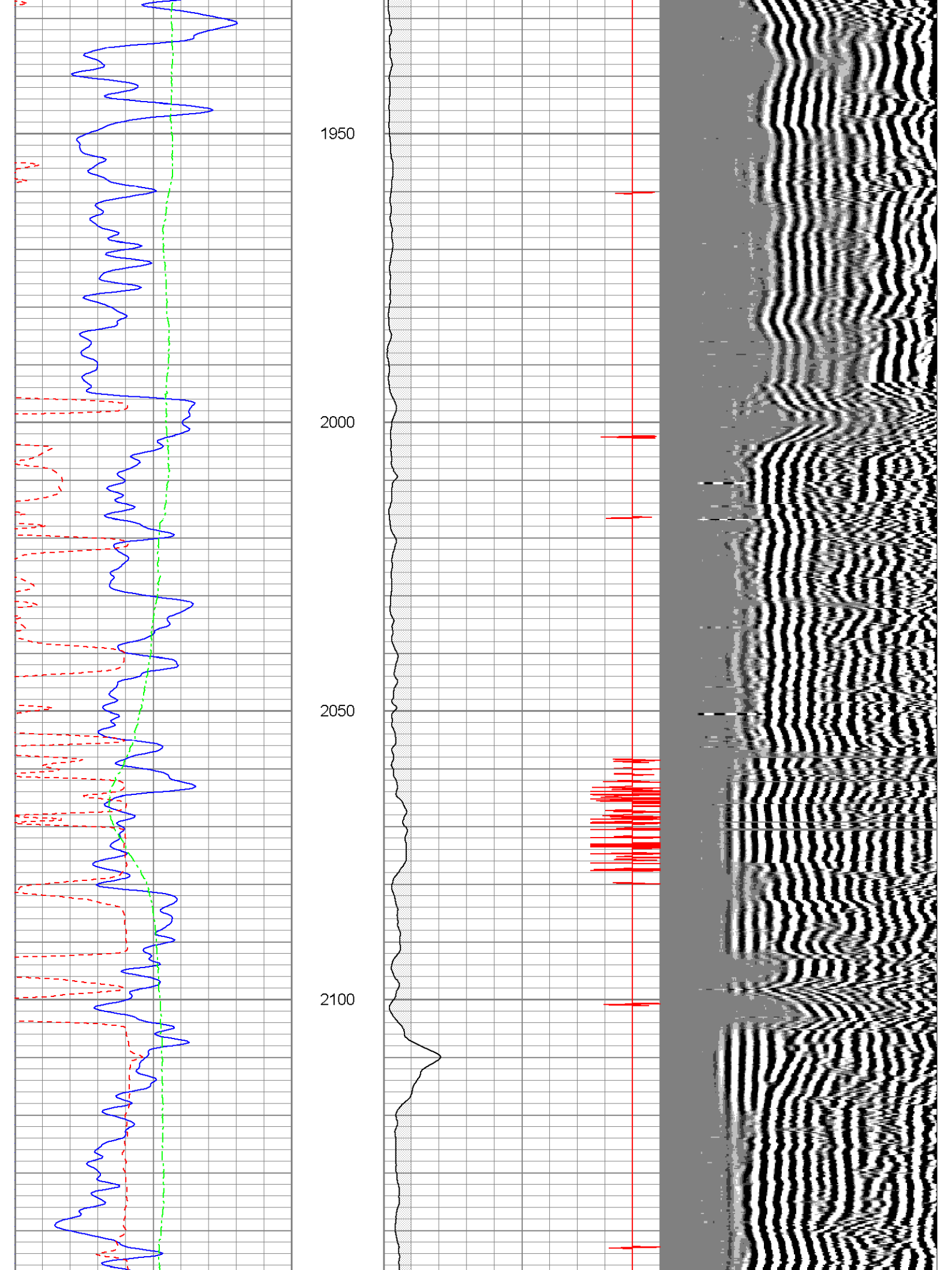


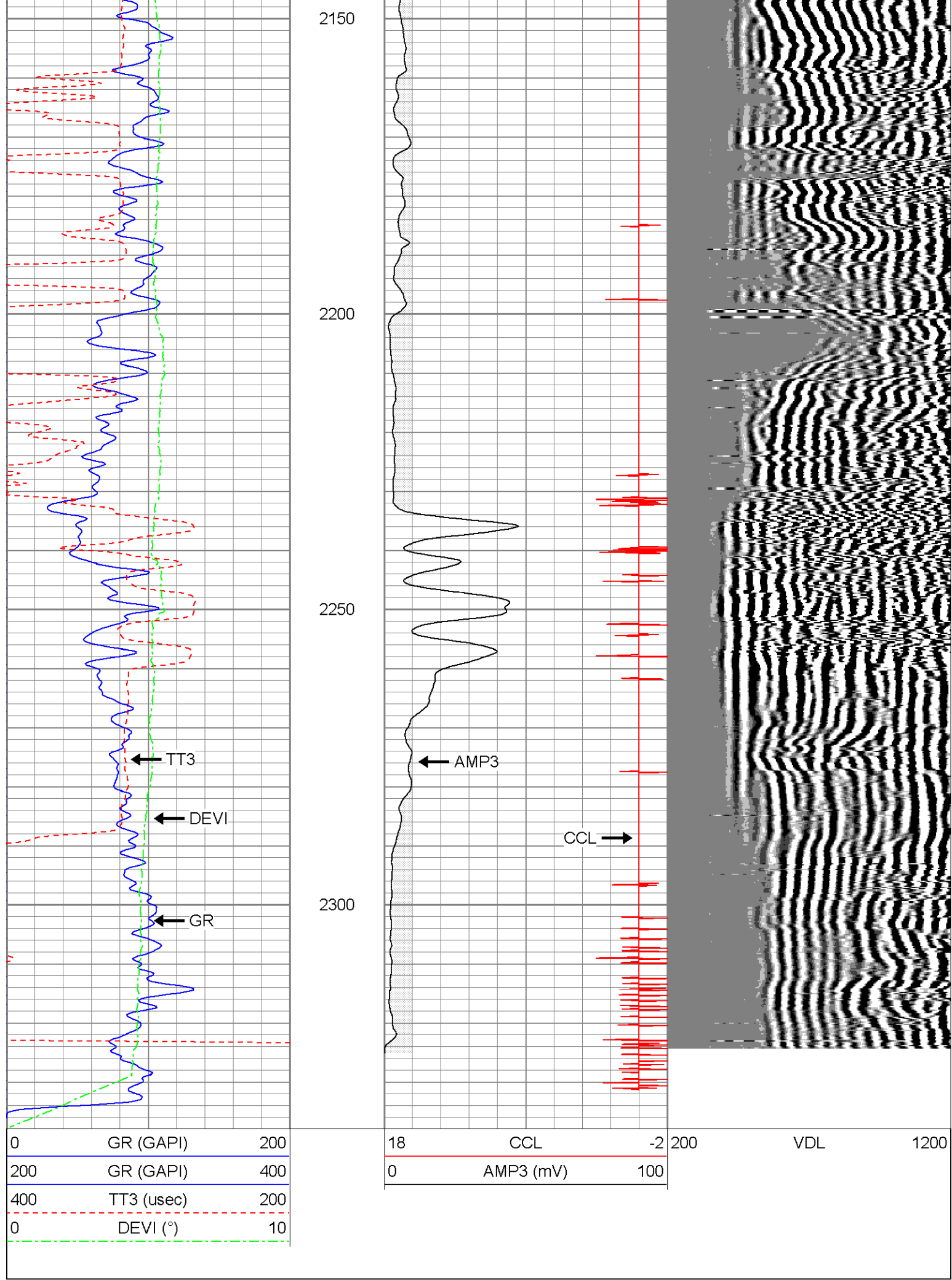








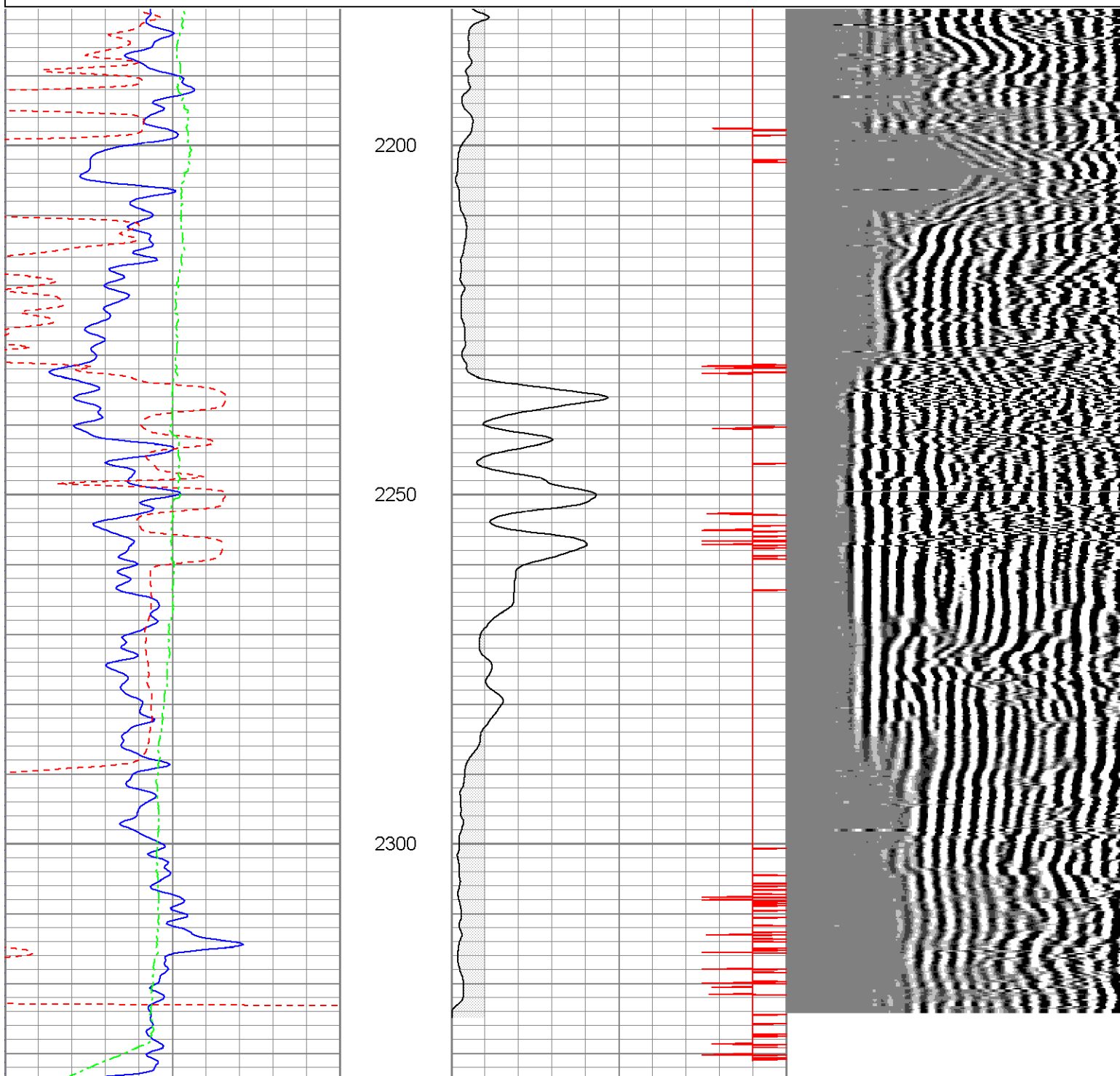




Database File: bilbofederal11-24cbl.db
 Dataset Pathname: pass2.1
 Presentation Format: cbl
 Dataset Creation: Tue Dec 13 23:13:47 2011 by Calc Open-Cased 071220
 Charted by: Depth in Feet scaled 1:240

0	GR (GAPI)	200
200	GR (GAPI)	400
400	TT3 (usec)	200
0	DEVI (°)	10

18	CCL	-2	200	VDL	1200
0	AMP3 (mV)	100			



0	GR (GAPI)	200	18	CCL	-2	200	VDL	1200
200	GR (GAPI)	400	0	AMP3 (mV)	100			
400	TT3 (usec)	200						
0	DEVI (°)	10						

Calibration Report

Database File: bilbofederal11-24cbl.db
Dataset Pathname: pass2
Dataset Creation: Tue Dec 13 18:49:29 2011 by Log Open-Cased 071220

Gamma Ray Calibration Report

Serial Number: 080616
Tool Model: 275D_INC
Performed: Tue Nov 15 14:55:34 2011

Calibrator Value: 1.0 GAPI

Background Reading: 0.0 cps
Calibrator Reading: 1.0 cps

Sensitivity: 1.0000 GAPI/cps

Inclinometer Calibration Report

Performed: Tue Nov 15 14:55:36 2011

	Low Read.	High Read.	Low Ref.	High Ref.	
X Accelerometer	-3583.40	3594.20	-1.00	1.00	gee
Y Accelerometer	-3588.80	3532.80	-1.00	1.00	gee
Z Accelerometer					

Cement Bond Log Calibration Report

Serial Number: 080201
Tool Model: PROBEDIGITALCBL
Performed: Fri Dec 09 11:47:40 2011

Depth: 777.107 ft
Casing Diameter: 5.5 in

	3' Spacing	5' Spacing	
Signal Zero:	1	1	mV
Calibrated Amplitude:	85	85	mV
Reading at Signal Zero:	0.00725098	0.00693359	V
Reading in Free Pipe:	0.43	0.662	V
Gain:	198.699	128.231	
Offset:	-0.440766	0.110897	