

BILL BARRETT CORPORATION E-BILL  
DO NOT MAIL-1099 18TH ST,STE 2300W  
DENVER, Colorado

Roth  
Roth 44-30

PATTERSON/189

## **Post Job Summary**

### **Cement Surface Casing**

Date Prepared: 12/29/11  
Version: 1

Service Supervisor: SIPNEFSKI, ROBERT

Submitted by: FRY, DOMINIK

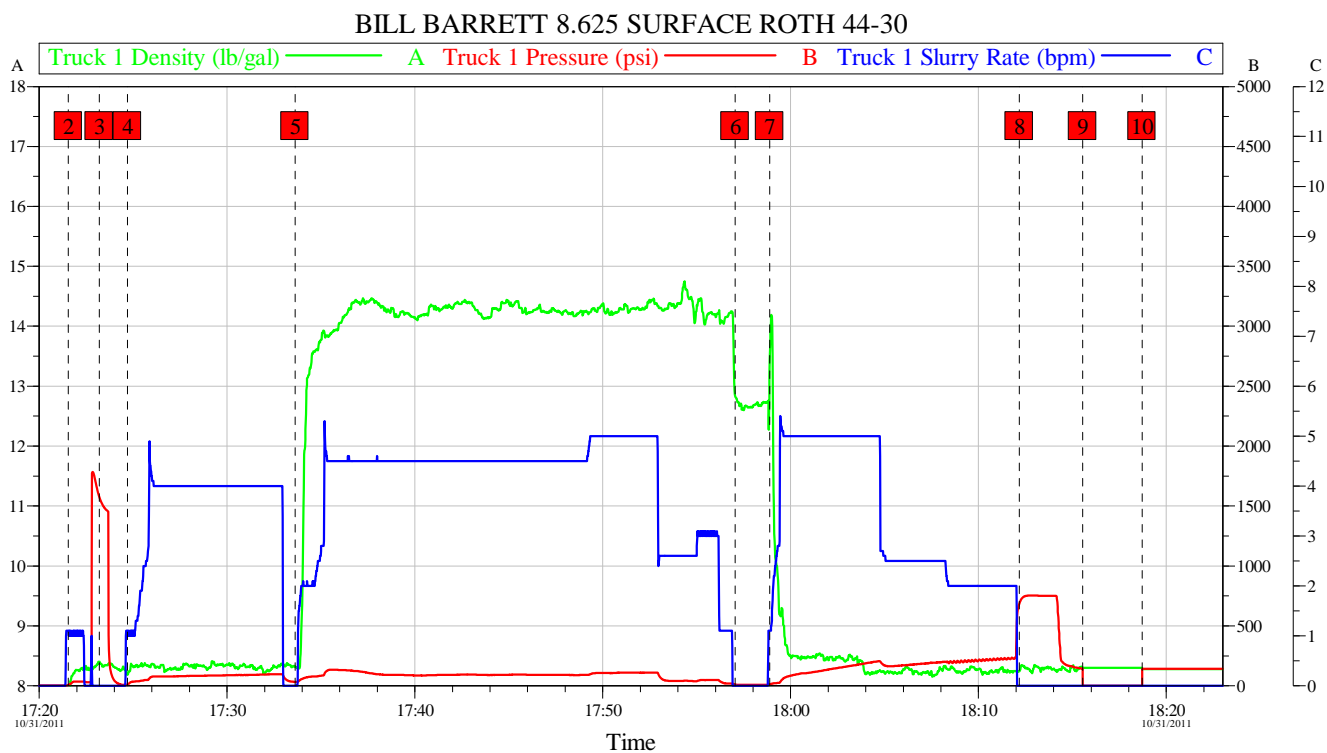
**HALLIBURTON**

# HALLIBURTON

## Pumping Schedule

Stage / Plug #	Fluid #	Fluid Type	Fluid Name	Surface Density lbm/gal	Avg Rate bbl/min	Surface Volume	Downhole Volume
1	1	Spacer	Water Spacer	8.34	4.00	30.0 bbl	30.0 bbl
1	2	Cement Slurry	SwiftCem B1 14.2#	14.20	4.50	340.0 sacks	340.0 sacks
1	3	Cement Slurry	Top Off Mountain G 15.8#	15.80	1.00	100.0 sacks	100.0 sacks

## Data Acquisition



Global Event Log					
Intersection	T1P	Intersection	T1P	Intersection	T1P
2 Start Job	17:21:33 7.135	3 Test Lines	17:23:12 1573	4 Pump Spacer 1	17:24:42 11.44
5 Pump Cement	17:33:37 33.00	6 Shutdown	17:57:03 11.00	7 Pump Displacement	17:58:53 12.60
8 Bump Plug	18:12:10 681.9	9 Suspending Job	18:15:33 0.000	10 Resuming Job	18:18:43 141.0

Customer:	Job Date: 31-Oct-2011	Sales Order #: 9028500
Well Description:	UWI:	

OptiCem v6.4.10  
31-Oct-11 19:09

# HALLIBURTON

## Service Supervisor Reports

### Job Log

Date/Time	Chart #	Activity Code	Pump Rate	Cum Vol	Pump		Pressure (psig)	Comments
10/31/2011 12:30		Arrive at Location from Service Center						
10/31/2011 12:45		Assessment Of Location Safety Meeting						HELD PRE-RIG UP SAFETY MEETING. ASSESS LOCATION FOR HAZARDS.
10/31/2011 17:00		Safety Meeting						HELD SAFETY MEETING WITH ALL 3RD PARTY PERSONNEL.
10/31/2011 17:21		Start Job						
10/31/2011 17:23		Test Lines						
10/31/2011 17:24		Pump Spacer 1	4	30			78.0	PUMPED 30BBL OF WATER WITH RED DYE. REQUESTED BY CUSTOMER. WATER SUPPLIED BY RIG.
10/31/2011 17:33		Pump Cement	4.5	137			88.0	PUMPED 340SKS OF SWIFTCMT. @14.2PPG MIXED WITH WATER SUPPLIED BY RIG.
10/31/2011 17:57		Shutdown						
10/31/2011 17:57		Drop Top Plug						
10/31/2011 17:58		Pump Displacement	5	43			114.0	PUMPED 43BBL OF WATER SUPPLIED BY RIG.
10/31/2011 18:12		Bump Plug	2				682.0	
10/31/2011 18:18		Other	1.5	20			123.0	CHECK FLOATS, FLOATS DID NOT HOLD. SHUT IN WELL AND TOP OUT WELL. PUMPED 20 BBL OF MOUNTAIN G CMT @15.8PPG. MIXED WITH WATER SUPPLIED BY RIG.
10/31/2011 19:13		End Job						HELD PRE-RIG DOWN SAFETY MEETING PREPARE FOR DEPARTURE.

## The Road to Excellence Starts with Safety

Sold To #: 343492	Ship To #: 2887976	Quote #:	Sales Order #: 9028500
Customer: BILL BARRETT CORPORATION E-BILL		Customer Rep:	
Well Name: Roth		Well #: 44-30	API/UWI #:
Field:	City (SAP): KERSEY	County/Parish: Weld	State: Colorado
Contractor: PATTERSON		Rig/Platform Name/Num: 189	
Job Purpose: Cement Surface Casing			
Well Type: Producing Well		Job Type: Cement Surface Casing	
Sales Person: FLING, MATTHEW		Srvc Supervisor: SIPNEFSKI, ROBERT	MBU ID Emp #: 419391

## Job Personnel

HES Emp Name	Exp Hrs	Emp #	HES Emp Name	Exp Hrs	Emp #	HES Emp Name	Exp Hrs	Emp #
BANUELOS, GUADALUPE		372277	BRICKER, DANIEL Z		475710	FLYNN, SHAD Michael		476484
SIPNEFSKI, ROBERT Anthony		419391	TAYLOR, JOSHUA Lin		485939			

## Equipment

HES Unit #	Distance-1 way	HES Unit #	Distance-1 way	HES Unit #	Distance-1 way	HES Unit #	Distance-1 way
10857012C	45 mile	10951208	45 mile	10972458	45 mile	11341988C	45 mile
11764052	45 mile						

## Job Hours

Date	On Location Hours	Operating Hours	Date	On Location Hours	Operating Hours	Date	On Location Hours	Operating Hours
TOTAL			Total is the sum of each column separately					

## Job

## Job Times

Formation Name					Date	Time	Time Zone
Formation Depth (MD)	Top	Bottom			Called Out	31 - Oct - 2011	08:15 MST
Form Type		BHST			On Location	31 - Oct - 2011	12:30 MST
Job depth MD	730. ft	Job Depth TVD	730. ft		Job Started	31 - Oct - 2011	17:21 MST
Water Depth		Wk Ht Above Floor	4. ft		Job Completed	31 - Oct - 2011	19:08 MST
Perforation Depth (MD)	From	To			Departed Loc	31 - Oct - 2011	20:00 MST

## Well Data

Description	New / Used	Max pressure psig	Size in	ID in	Weight lbm/ft	Thread	Grade	Top MD ft	Bottom MD ft	Top TVD ft	Bottom TVD ft
Open Hole				12.25				.	724.		
Surface Casing	Unknown		8.625	8.097	24.		N-80	.	724.	.	.

Sales/Rental/3<sup>rd</sup> Party (HES)

Description	Qty	Qty uom	Depth	Supplier
SHOE,CSG,TIGER TOOTH,8 5/8 IN 8RD	1	EA		
PLUG,CMTG,TOP,WOODN,TWO CUP TY,8 5/8 IN	1	EA		
CENTRALIZER ASSY - API - 8-5/8 CSG X	7	EA		
CLAMP - LIMIT - 8-5/8 - HINGED -	1	EA		
BASKET - CEMENT - 8 5/8 CSG X 12 1/4	1	EA		
KIT,HALL WELD-A	1	EA		

# HALLIBURTON

## Tools and Accessories

Type	Size	Qty	Make	Depth	Type	Size	Qty	Make	Depth	Type	Size	Qty	Make
Guide Shoe					Packer					Top Plug			
Float Shoe					Bridge Plug					Bottom Plug			
Float Collar					Retainer					SSR plug set			
Insert Float										Plug Container			
Stage Tool										Centralizers			

## Miscellaneous Materials

Gelling Agt		Conc		Surfactant		Conc		Acid Type		Qty		Conc	%
Treatment Fld		Conc		Inhibitor		Conc		Sand Type		Size		Qty	

## Fluid Data

### Stage/Plug #: 1

Fluid #	Stage Type	Fluid Name	Qty	Qty uom	Mixing Density lbm/gal	Yield ft <sup>3</sup> /sk	Mix Fluid Gal/sk	Rate bbl/min	Total Mix Fluid Gal/sk
1	Water Spacer		30.00	bbl	8.34	.0	.0	.0	
2	SwiftCem B1 14.2#	SWIFTCM (TM) SYSTEM (452990)	340.0	sacks	14.2	1.51	7.53		7.53
	0.125 lbm	POLY-E-FLAKE (101216940)							
	7.53 Gal	FRESH WATER							
3	SwiftCem B2 14.2	SQUEEZECM (TM) SYSTEM (452971)		sacks	14.2	1.55	7.69		7.69
	7.69 Gal	FRESH WATER							
4	Top Off Mountain G 15.8#	CMT - PREMIUM - CLASS G, 94 LB SK (100003685)	100.0	sacks	15.8	1.15	5.0		5.0
	94 lbm	CMT - PREMIUM - CLASS G REG OR TYPE V, BULK (100003685)							
	5 Gal	FRESH WATER							

### Calculated Values

### Pressures

### Volumes

Displacement		Shut In: Instant		Lost Returns		Cement Slurry		Pad	
Top Of Cement		5 Min		Cement Returns		Actual Displacement		Treatment	
Frac Gradient		15 Min		Spacers		Load and Breakdown		Total Job	

### Rates

Circulating		Mixing		Displacement		Avg. Job	
Cement Left In Pipe	Amount	45 ft	Reason	Shoe Joint			
Frac Ring # 1 @	ID	Frac ring # 2 @	ID	Frac Ring # 3 @	ID	Frac Ring # 4 @	ID

The Information Stated Herein Is Correct

Customer Representative Signature