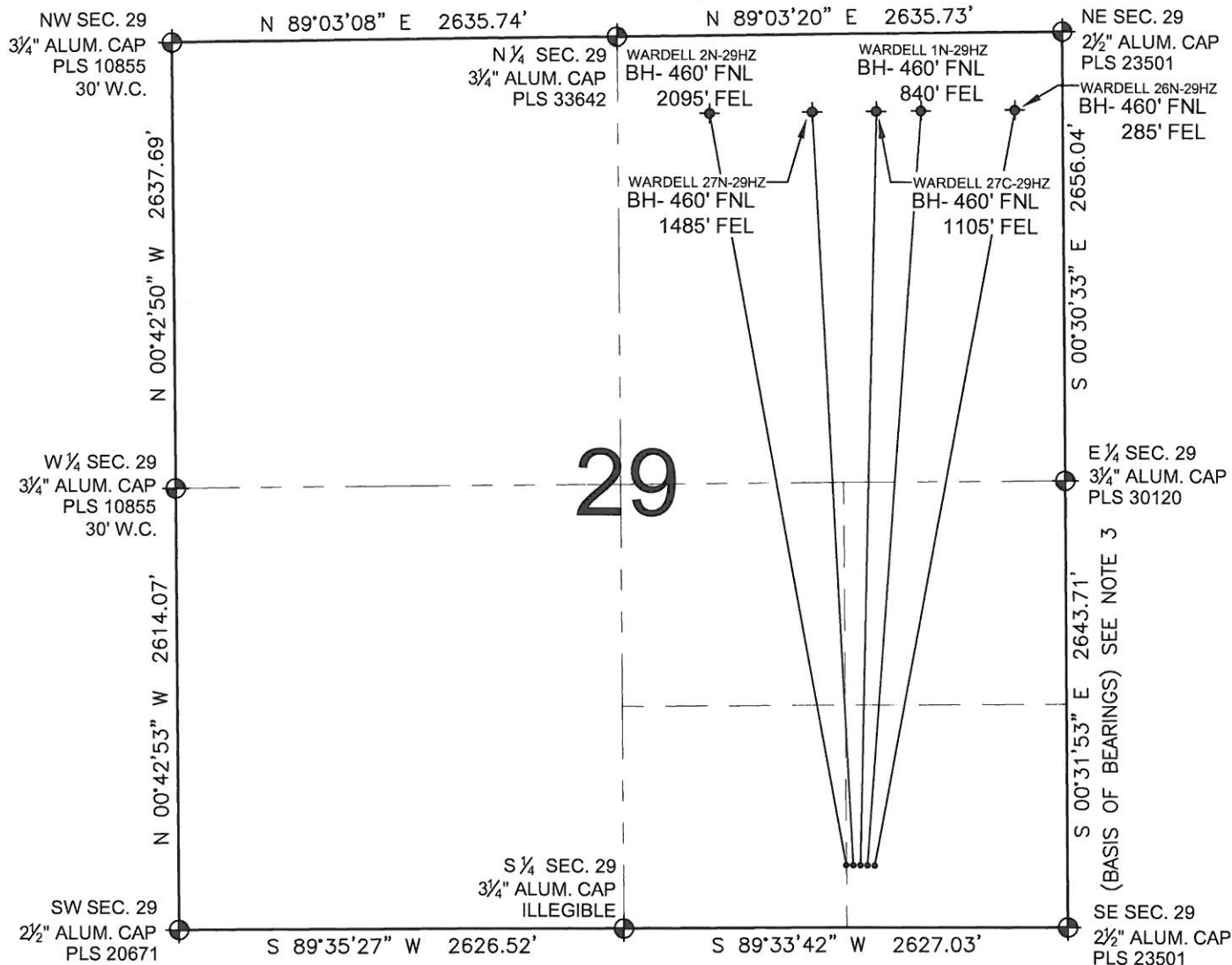


PAD DRAWING: WARDELL 5 PAD

SECTION 29, TOWNSHIP 3 NORTH, RANGE 65 WEST, 6TH P.M.



LEGEND

- ⊕ = EXISTING MONUMENT
- ⬢ = BOTTOM HOLE
- BH= BOTTOM HOLE
- = PROPOSED WELL
- ◆ = EXISTING WELL

NOTES:

- THIS FIELD SURVEY CONFORMS TO THE MINIMUM STANDARDS SET BY THE C.O.G.C.C., RULE NO. 215
- HORIZONTAL POSITIONS AND ORTHOMETRIC ELEVATIONS SHOWN AT THE WELL HEAD, ARE BASED ON GPS-RTK POSITIONS DERIVED FROM MINIMUM 2-HOUR STATIC OBSERVATIONS CORRECTED BY THE NATIONAL GEODETIC SURVEY ONLINE POSITIONING USER SERVICE, O.P.U.S. DATUM: HORIZONTAL = NAD83/2007, VERTICAL = NAVD88
- THE BASIS OF BEARINGS ARE STATE PLANE COORDINATE SYSTEM GRID BEARINGS SHOWN HEREON BETWEEN THE DESCRIBED THE MONUMENTS SHOWN HEREON.
- GRID DISTANCES ARE SHOWN, AS MEASURED IN THE FIELD, WITH TIES TO WELLS MEASURED PERPENDICULAR TO SECTION LINES.

NOTES:

- WARDELL 2N-29HZ TO BE AT 370' FSL, 1315' FEL.
- BOTTOM HOLE AT 460' FNL & 2095' FEL.
- WARDELL 27N-29HZ TO BE AT 370' FSL, 1299' FEL.
- BOTTOM HOLE AT 460' FNL & 1485' FEL.
- WARDELL 27C-29HZ TO BE AT 370' FSL, 1283' FEL.
- BOTTOM HOLE AT 460' FNL & 1105' FEL.
- WARDELL 1N-29HZ TO BE AT 370' FSL, 1267' FEL.
- BOTTOM HOLE AT 460' FNL & 840' FEL.
- WARDELL 26N-29HZ TO BE AT 370' FSL, 1251' FEL.
- BOTTOM HOLE AT 460' FNL & 285' FEL.

PREPARED BY:



KERR-MCGEE OIL & GAS ONSHORE LP

FIELD DATE: 10-10-11	PAD NAME: WARDELL 5 PAD
DRAWING DATE: 10-15-11	SURFACE LOCATION: WELD COUNTY, COLORADO SW 1/4 SE 1/4, SEC. 29, T3N, R65W, 6TH P.M. SE 1/4 SE 1/4, SEC. 29, T3N, R65W, 6TH P.M.
BY: SMF	

