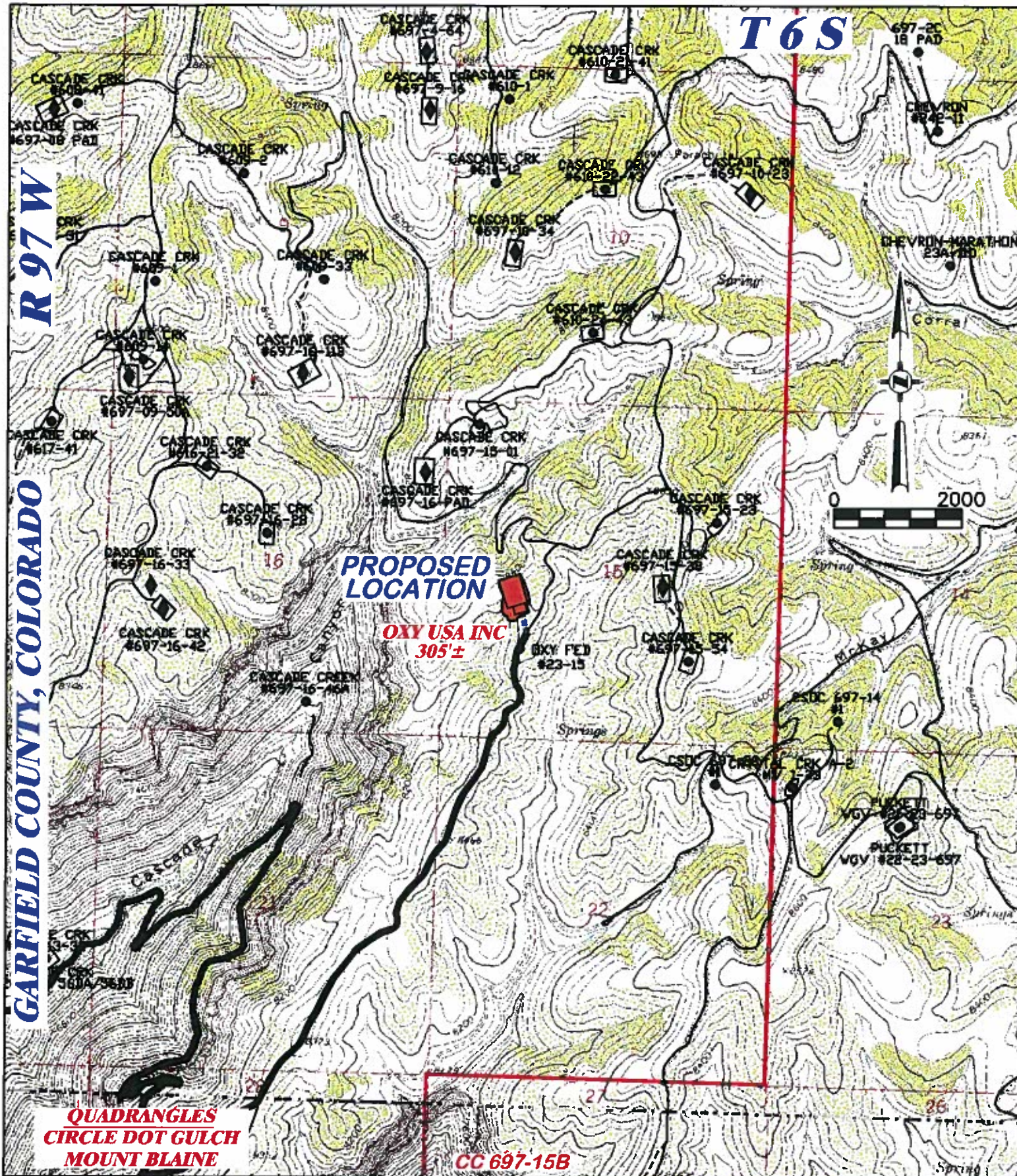


R 97 W
GARFIELD COUNTY, COLORADO

T 6 S



QUADRANGLES
CIRCLE DOT GULCH
MOUNT BLAINE

CC 697-15B



RIFFIN & ASSOCIATES, INC.
1414 ELK ST., ROCK SPRINGS, WY 82901

(907) 382-3028

DATE: 7/25/11 - TCM

SCALE: 1" = 2000'

REVISED: 12/16/11 - RAS

DRG JOB No. 18652

CHANGED WELL NAMES

EXHIBIT/TOPO MAP 4

PROPOSED ACCESS MAP

OXY USA WTP LP
CASCADE CREEK 697-15-28B, OXY FEDERAL 697-15-34, 34A, 36A,
36B, 42A, 42B, 44A, 44B, 49, 50, 51, 52, 57, 59, 60,
NWSW, SECTION 15, T. 6 S., R. 97 W., 6th P.M.,
GARFIELD COUNTY, COLORADO

PROPOSED ACCESS LENGTH: 305±

PROPOSED ACCESS ■■■■■■■■

EXISTING ROAD ————