
BILL BARRETT CORPORATION E-BILL

**FEDERAL 14B-34-691
MAMM CREEK
Garfield County , Colorado**

Cement Surface Casing
30-Dec-2011

Post Job Summary

The Road to Excellence Starts with Safety

Sold To #: 343492	Ship To #: 2896386	Quote #:	Sales Order #: 9132795
Customer: BILL BARRETT CORPORATION E-BILL	Customer Rep: Lauer, Casey		
Well Name: FEDERAL	Well #: 14B-34-691	API/UWI #: 05-045-20869	
Field: MAMM CREEK	City (SAP): SILT	County/Parish: Garfield	State: Colorado
Lat: N 39.479 deg. OR N 39 deg. 28 min. 45.044 secs.	Long: W 107.553 deg. OR W -108 deg. 26 min. 48.3 secs.		
Contractor: PROPETRO	Rig/Platform Name/Num: PROPETRO 1		
Job Purpose: Cement Surface Casing			
Well Type: Development Well	Job Type: Cement Surface Casing		
Sales Person: FLING, MATTHEW	Srv Supervisor: YOUNG, JEREMY	MBU ID Emp #: 418013	

Job Personnel

HES Emp Name	Exp Hrs	Emp #	HES Emp Name	Exp Hrs	Emp #	HES Emp Name	Exp Hrs	Emp #
KUKUS, CARLTON Dean	14	458577	PARKER, BRANDON	14	503646	YOUNG, JEREMY R	14	418013

Equipment

HES Unit #	Distance-1 way	HES Unit #	Distance-1 way	HES Unit #	Distance-1 way	HES Unit #	Distance-1 way
10001431	120 mile	10724643	120 mile	10871245	120 mile	11259881	120 mile
11360881	120 mile						

Job Hours

Date	On Location Hours	Operating Hours	Date	On Location Hours	Operating Hours	Date	On Location Hours	Operating Hours
12/30/2011	14	3						

TOTAL Total is the sum of each column separately

Job

Job Times

Formation Name	Top	Bottom	Called Out	Date	Time	Time Zone
Formation Depth (MD)			On Location	30 - Dec - 2011	04:00	MST
Form Type	BHST		Job Started	30 - Dec - 2011	16:06	MST
Job depth MD	846.1 ft	Job Depth TVD	Job Completed	30 - Dec - 2011	17:00	MST
Water Depth		Wk Ht Above Floor	Departed Loc	30 - Dec - 2011	18:00	MST
Perforation Depth (MD)	From	To				

Well Data

Description	New / Used	Max pressure psig	Size in	ID in	Weight lbm/ft	Thread	Grade	Top MD ft	Bottom MD ft	Top TVD ft	Bottom TVD ft
OPEN HOLE				12.25				.	865.		
SURFACE CASING	Unknown		9.625	8.921	36.		K-55	.	846.1		

Sales/Rental/3rd Party (HES)

Description	Qty	Qty uom	Depth	Supplier
R/A DENSOMETER W/CHART RECORDER, /JOB, ZI	1	JOB		
ADC (AUTO DENSITY CTRL) SYS, /JOB, ZI	1	JOB		
PORT. DATA ACQUIS. W/OPTICEM RT W/HES	1	EA		
PLUG, CMTG, TOP, 9 5/8, HWE, 8.16 MIN/9.06 MA	1	EA		

Tools and Accessories

Type	Size	Qty	Make	Depth	Type	Size	Qty	Make	Depth	Type	Size	Qty	Make
Guide Shoe					Packer					Top Plug	9.625	1	HES
Float Shoe					Bridge Plug					Bottom Plug			
Float Collar					Retainer					SSR plug set			
Insert Float										Plug Container	9.625	1	HES
Stage Tool										Centralizers			

Miscellaneous Materials

Gelling Agt	Conc	Surfactant	Conc	Acid Type	Qty	Conc	%
Treatment Fld	Conc	Inhibitor	Conc	Sand Type	Size		Qty

Fluid Data

Stage/Plug #: 1

Fluid #	Stage Type	Fluid Name	Qty	Qty uom	Mixing Density lbm/gal	Yield ft ³ /sk	Mix Fluid Gal/sk	Rate bbl/min	Total Mix Fluid Gal/sk
1	WATER SPACER	FRESH WATER	20.00	bbl	8.34	.0	.0	4	
2	VersaCem	VERSACEM (TM) SYSTEM (452010)	125.0	sacks	12.3	2.38	13.77	5	13.77
	0.25 lbm	POLY-E-FLAKE (101216940)							
	13.77 Gal	FRESH WATER							
3	SwiftCem	SWIFTCEM (TM) SYSTEM (452990)	125.0	sacks	14.2	1.43	6.85	5	6.85
	0.25 lbm	POLY-E-FLAKE (101216940)							
	6.85 Gal	FRESH WATER							
4	DISPLACEMENT	FRESH WATER	62.00	bbl	8.33			5	
Calculated Values		Pressures		Volumes					
Displacement	62	Shut In: Instant		Lost Returns	NO	Cement Slurry	84.8	Pad	
Top Of Cement	SURFACE	5 Min		Cement Returns	32	Actual Displacement	62	Treatment	
Frac Gradient		15 Min		Spacers	20	Load and Breakdown		Total Job	166.8
Rates									
Circulating		Mixing	5	Displacement	5	Avg. Job			5
Cement Left In Pipe	Amount	44.4 ft	Reason	Shoe Joint					
Frac Ring # 1 @	ID		Frac ring # 2 @	ID		Frac Ring # 3 @	ID		Frac Ring # 4 @
The Information Stated Herein Is Correct				Customer Representative Signature					

The Road to Excellence Starts with Safety

Sold To #: 343492	Ship To #: 2896386	Quote #:	Sales Order #: 9132795
Customer: BILL BARRETT CORPORATION E-BILL		Customer Rep: Lauer, Casey	
Well Name: FEDERAL	Well #: 14B-34-691	API/UWI #: 05-045-20869	
Field: MAMM CREEK	City (SAP): SILT	County/Parish: Garfield	State: Colorado
Legal Description:			
Lat: N 39.479 deg. OR N 39 deg. 28 min. 45.044 secs.		Long: W 107.553 deg. OR W -108 deg. 26 min. 48.3 secs.	
Contractor: PROPETRO		Rig/Platform Name/Num: PROPETRO 1	
Job Purpose: Cement Surface Casing			Ticket Amount:
Well Type: Development Well		Job Type: Cement Surface Casing	
Sales Person: FLING, MATTHEW		Srvc Supervisor: YOUNG, JEREMY	MBU ID Emp #: 418013

Activity Description	Date/Time	Cht #	Rate bbl/ min	Volume bbl		Pressure psig		Comments
				Stage	Total	Tubing	Casing	
Arrive At Loc	12/30/2011 03:43							CREW ALREADY ON LOCATION FROM PREVIOUS JOB
Assessment Of Location Safety Meeting	12/30/2011 15:15							WITH ALL HES PERSONNEL
Other	12/30/2011 15:20							SPOT EQUIPMENT
Pre-Rig Up Safety Meeting	12/30/2011 15:25							WITH ALL HES PERSONNEL
Rig-Up Equipment	12/30/2011 15:30							
Pre-Job Safety Meeting	12/30/2011 16:00							WITH ALL PERSONNEL ON LOCATION
Start Job	12/30/2011 16:06							
Other	12/30/2011 16:07		2	2			17.0	FILL LINES WITH FRESH WATER
Test Lines	12/30/2011 16:09							TEST LINES TO 3200 PSI. PRESSURE HOLDING
Pump Spacer 1	12/30/2011 16:18		4	20			40.0	FRESH WATER
Pump Lead Cement	12/30/2011 16:23		5	53			105.0	125 SKS AT 12.3 PPG, 2.38 FT3/SK, 13.77 GAL/SK
Pump Tail Cement	12/30/2011 16:35		5	31.8			177.0	125 SKS AT 14.2 PPG, 1.43 FT3/SK, 6.85 GAL/SK
Shutdown	12/30/2011 16:40							
Drop Top Plug	12/30/2011 16:41							PLUG LAUNCHED
Pump Displacement	12/30/2011 16:42		5	52			273.0	FRESH WATER
Activity Description	Date/Time	Cht	Rate bbl/ min	Volume bbl		Pressure psig		Comments

Sold To # : 343492

Ship To # :2896386

Quote # :

Sales Order # :

9132795

SUMMIT Version: 7.2.27

Friday, December 30, 2011 06:20:00

Cementing Job Log

		#		Stage	Total	Tubing	Casing	
Slow Rate	12/30/2011 16:53		2	10			245.0	SLOW RATE 10 BBLS PRIOR TO CALCULATED DISPLACEMENT
Bump Plug	12/30/2011 16:57		2		62		860.0	PLUG BUMPED
Check Floats	12/30/2011 16:59							FLOATS HOLDING. RETURNED 0.5 BBL H2O TO PUMP
End Job	12/30/2011 17:00							PIPE WAS STATIC DURING JOB. CIRCULATION CAME WITH 20 BBL TAIL CEMENT AWAY. HES RETURNED 32 BBL CEMENT TO SURFACE
Pre-Rig Down Safety Meeting	12/30/2011 17:05							WITH ALL HES PERSONNEL
Rig-Down Equipment	12/30/2011 17:10							
Pre-Convoy Safety Meeting	12/30/2011 17:50							WITH ALL HES PERSONNEL
Crew Leave Location	12/30/2011 18:00							
Comment	12/30/2011 18:01							THANK YOU FOR USING HALLIBURTON CEMENT DEPARTMENT. JEREMY YOUNG AND CREW.

HALLIBURTON

Water Analysis Report

Company: BILL BARRETT

Submitted by: JEREMY YOUNG

Attention: LAB

Lease FEDERAL

Well # 14B-34-691

Date: 12/30/2011

Date Rec.:

S.O.# 9132795

Job Type: SURFACE

Specific Gravity	<i>MAX</i>	1
pH	<i>8</i>	7
Potassium (K)	<i>5000</i>	250 Mg / L
Calcium (Ca)	<i>500</i>	120 Mg / L
Iron (FE2)	<i>300</i>	0 Mg / L
Chlorides (Cl)	<i>3000</i>	0 Mg / L
Sulfates (SO ₄)	<i>1500</i>	UNDER 200 Mg / L
Chlorine (Cl ₂)		0 Mg / L
Temp	<i>40-80</i>	43 Deg
Total Dissolved Solids		420 Mg / L

Respectfully: JEREMY YOUNG

Title: CEMENTING SUPERVISOR

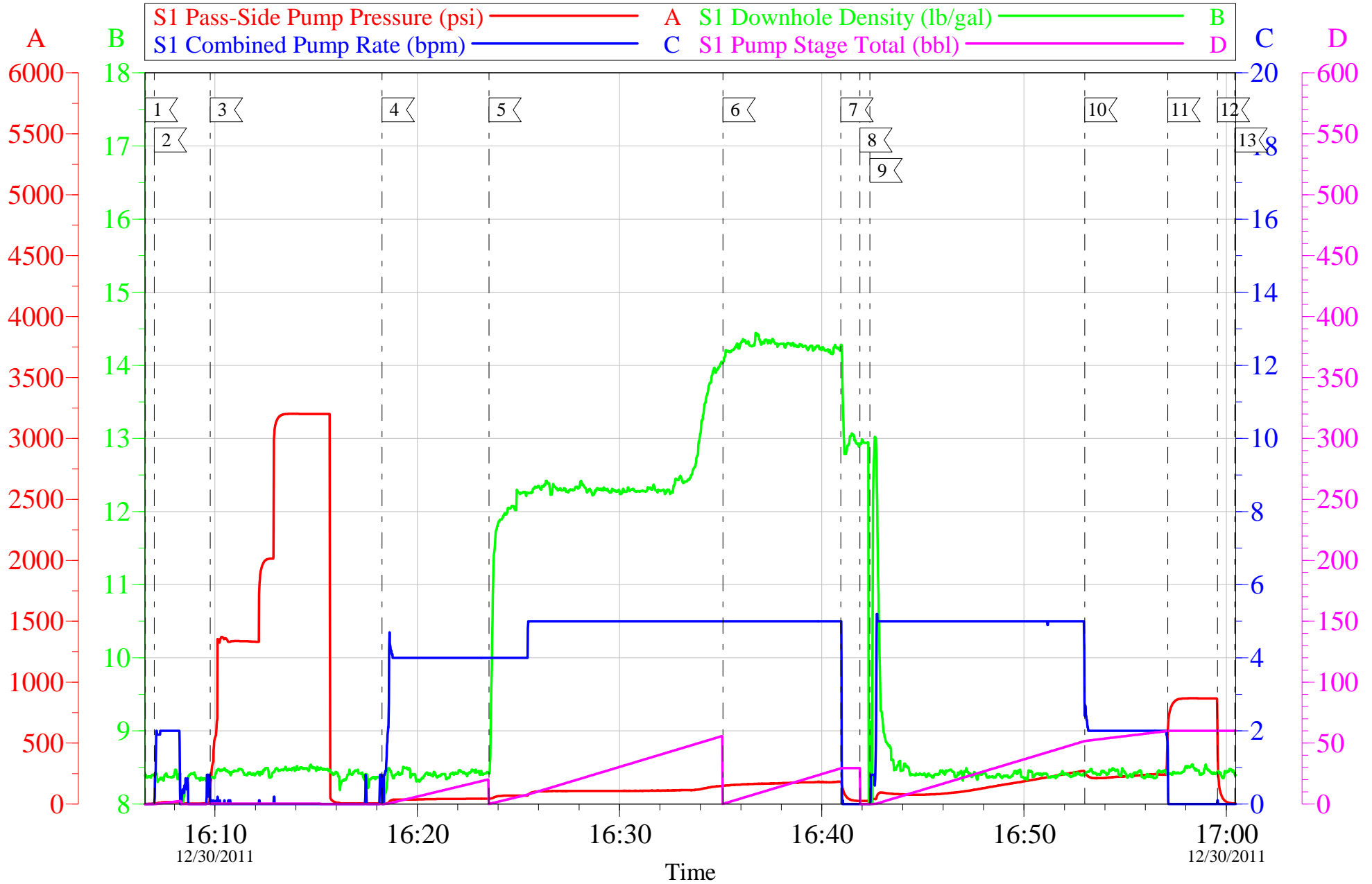
Location: Grand Junction, CO

NOTICE:

This report is limited to the described sample tested. Any person using or relying on this report agrees that Halliburton shall not be liable for any loss or damage whether due to act or omission resulting from such report or its use.

BILL BARRETT - FEDERAL 14B-34-691

9 5/8 SURFACE

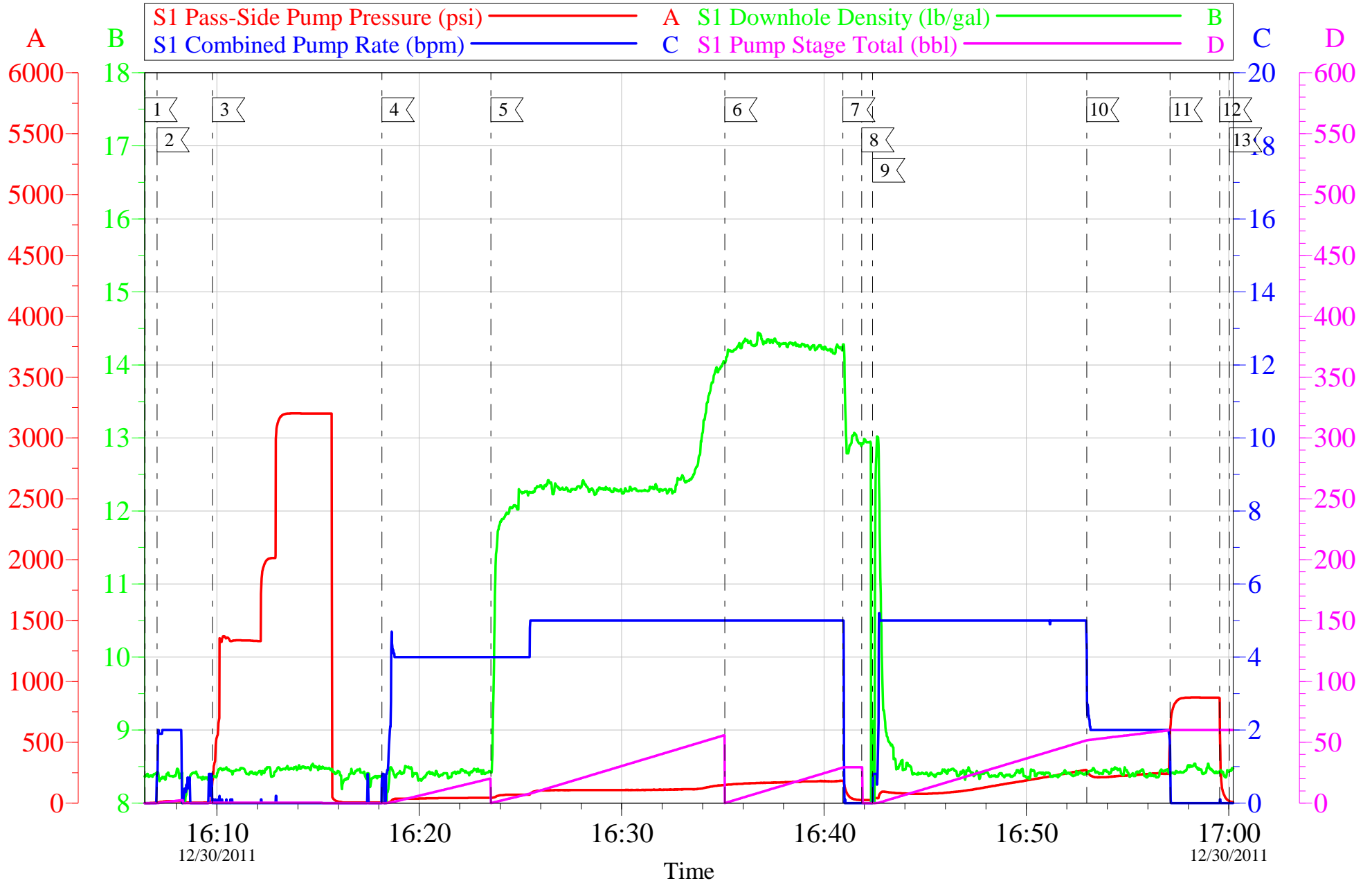


Customer:	BILL BARRETT	Job Date:	30-Dec-2011	Sales Order #:	9132795
Well Description:	FEDERAL 14B-34-691	Job Type:	SURFACE	ADC Used:	YES
Company Rep:	CASER LAUER	Cement Supervisor:	JEREMY YOUNG	Elite #8:	CARL KUKUS

OptiCem v6.4.10
30-Dec-11 17:09

BILL BARRETT - FEDERAL 14B-34-691

9 5/8 SURFACE



Customer: BILL BARRETT	Job Date: 30-Dec-2011	Sales Order #: 9132795
Well Description: FEDERAL 14B-34-691	Job Type: SURFACE	ADC Used: YES
Company Rep: CASEY LAUER	Cement Supervisor: JEREMY YOUNG	Elite #8: CARL KUKUS

OptiCem v6.4.10
30-Dec-11 18:18