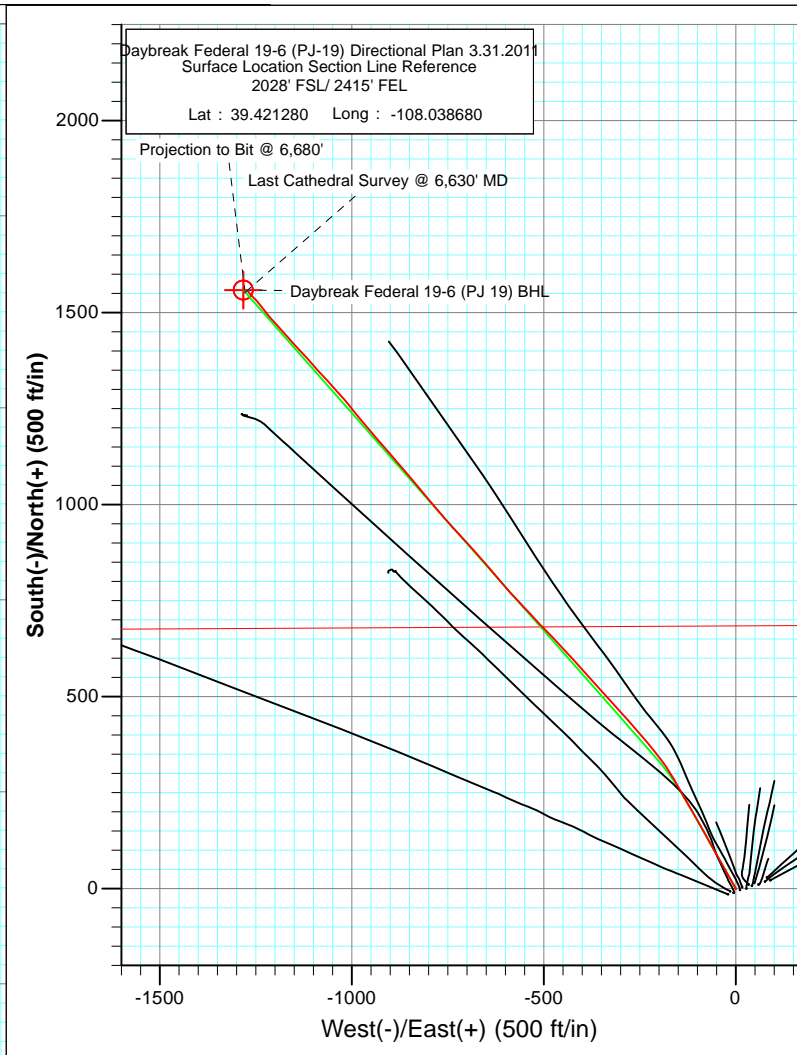
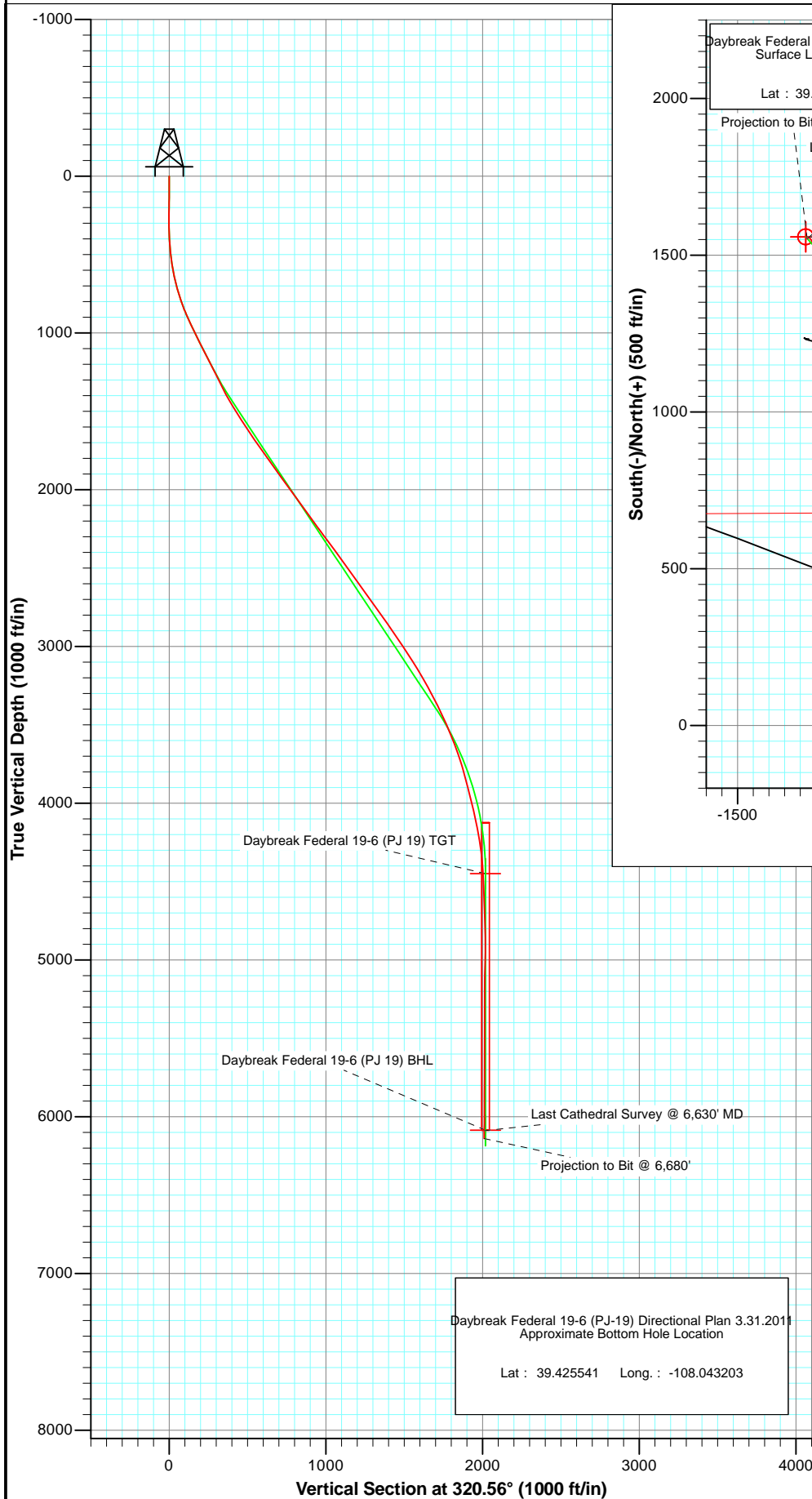




Project: S. Piceance (Parachute)  
Site: NWSE S19-T7S-R95W (PJ-19 Pad)  
Well: Daybreak Federal 19-6 (PJ-19) Directional Plan 3.31.2011  
Wellbore: DD  
Plan: FINAL



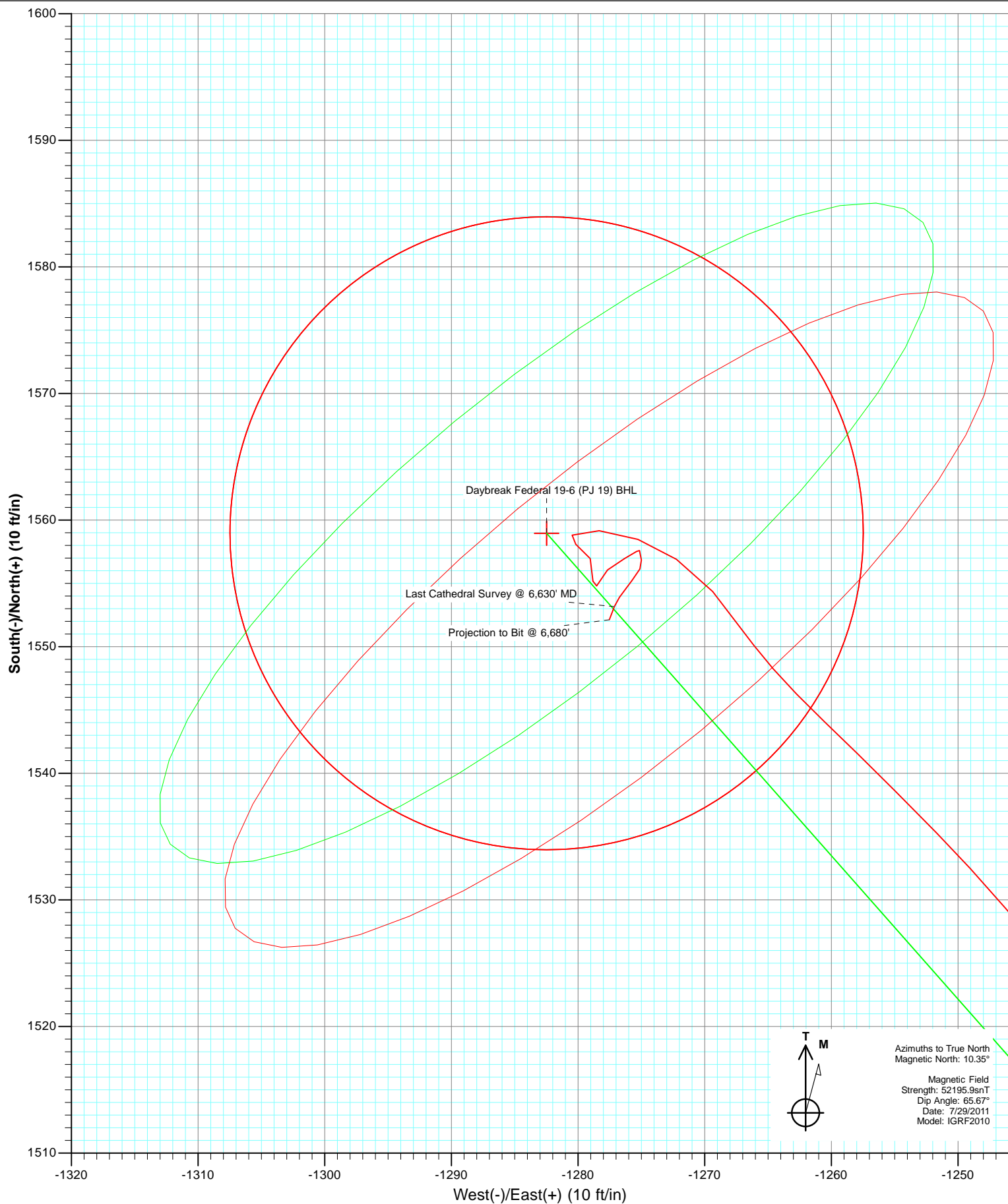
Azimuths to True North  
Magnetic North: 10.35°

Magnetic Field  
Strength: 52195.9nT  
Dip Angle: 65.67°  
Date: 7/29/2011  
Model: IGRF2010

DESIGN DETAILS: DD				
Job#	115274 (SH), 115304 (MH); BH			
KBE @ 5449.0ft (Original Well Elev)				
Azimuth	Origin Type	N/S	E/W	
Daybreak Federal 19-6 (PJ 19) BHL	320.56	Slot	0.0	0.0

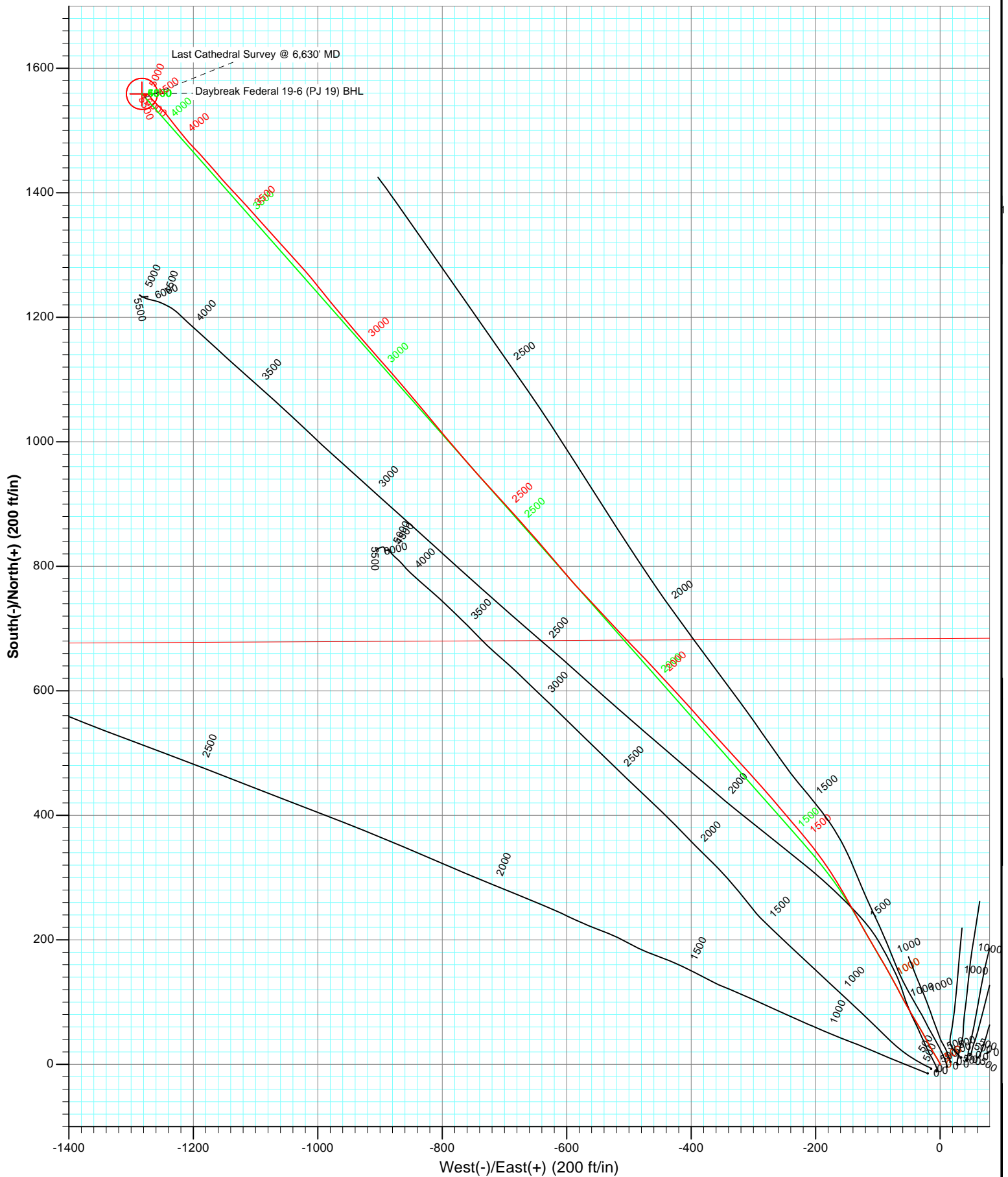


Project: S. Piceance (Parachute)  
Site: NWSE S19-T7S-R95W (PJ-19 Pad)  
Well: Daybreak Federal 19-6 (PJ-19) Directional Plan 3.31.2011  
Wellbore: DD  
Plan: FINAL





Project: S. Piceance (Parachute)  
Site: NWSE S19-T7S-R95W (PJ-19 Pad)  
Well: Daybreak Federal 19-6 (PJ-19) Directional Plan 3.31.2011  
Wellbore: DD  
Plan: FINAL



# Cathedral Energy Services

## Survey Report

<b>Company:</b>	EnCana Oil & Gas (USA) Inc	<b>Local Co-ordinate Reference:</b>	Well Daybreak Federal 19-6 (PJ-19) Directional P
<b>Project:</b>	S. Piceance (Parachute)	<b>TVD Reference:</b>	KBE @ 5449.0ft (Original Well Elev)
<b>Site:</b>	NWSE S19-T7S-R95W (PJ-19 Pad)	<b>MD Reference:</b>	KBE @ 5449.0ft (Original Well Elev)
<b>Well:</b>	Daybreak Federal 19-6 (PJ-19) Directional Plan	<b>North Reference:</b>	True
<b>Wellbore:</b>	DD1.2011	<b>Survey Calculation Method:</b>	Minimum Curvature
<b>Design:</b>	DD	<b>Database:</b>	USA EDM 5000 Multi Users DB

<b>Project</b>	S. Piceance (Parachute), Garfield County, CO		
<b>Map System:</b>	US State Plane 1983	<b>System Datum:</b>	Mean Sea Level
<b>Geo Datum:</b>	North American Datum 1983		
<b>Map Zone:</b>	Colorado Central Zone		

<b>Site</b>	NWSE S19-T7S-R95W (PJ-19 Pad)			
<b>Site Position:</b>		<b>Northing:</b>	1,588,373.67 ft	<b>Latitude:</b> 39.421340
<b>From:</b>	Lat/Long	<b>Easting:</b>	2,283,011.65 ft	<b>Longitude:</b> -108.038360
<b>Position Uncertainty:</b>	0.0 ft	<b>Slot Radius:</b>	13.200 in	<b>Grid Convergence:</b> -1.60 °

<b>Well</b>	Daybreak Federal 19-6 (PJ-19) Directional Plan 3.31.2011			
<b>Well Position</b>	<b>+N/-S</b>	0.0 ft	<b>Northing:</b>	1,588,354.33 ft
	<b>+E/-W</b>	0.0 ft	<b>Easting:</b>	2,282,920.67 ft
<b>Position Uncertainty</b>		0.0 ft	<b>Wellhead Elevation:</b>	ft
			<b>Ground Level:</b>	5,427.0 ft

<b>Wellbore</b>	DD				
<b>Magnetics</b>	<b>Model Name</b>	<b>Sample Date</b>	<b>Declination (°)</b>	<b>Dip Angle (°)</b>	<b>Field Strength (nT)</b>
	IGRF2010	7/29/2011	10.35	65.67	52,196

<b>Design</b>	DD			
<b>Audit Notes:</b>				
<b>Version:</b>	1.0	<b>Phase:</b>	ACTUAL	<b>Tie On Depth:</b> 0.0
<b>Vertical Section:</b>	<b>Depth From (TVD) (ft)</b>	<b>+N/-S (ft)</b>	<b>+E/-W (ft)</b>	<b>Direction (°)</b>
	0.0	0.0	0.0	320.56

<b>Survey Program</b>	<b>Date</b>	8/8/2011		
<b>From (ft)</b>	<b>To (ft)</b>	<b>Survey (Wellbore)</b>	<b>Tool Name</b>	<b>Description</b>
139.0	1,170.0	Survey #1 (DD)	MWD	Geolink MWD
1,259.0	6,680.0	Survey #2 (DD)	MWD	Geolink MWD

<b>Survey</b>									
<b>Measured Depth (ft)</b>	<b>Inclination (°)</b>	<b>Azimuth (°)</b>	<b>Vertical Depth (ft)</b>	<b>+N/-S (ft)</b>	<b>+E/-W (ft)</b>	<b>Vertical Section (ft)</b>	<b>Dogleg Rate (°/100ft)</b>	<b>Build Rate (°/100ft)</b>	<b>Formations / Comments</b>
0.0	0.00	0.00	0.0	0.0	0.0	0.0	0.00	0.00	
139.0	0.00	100.40	139.0	0.0	0.0	0.0	0.00	0.00	
169.0	0.10	114.90	169.0	0.0	0.0	0.0	0.33	0.33	
200.0	0.10	123.60	200.0	0.0	0.1	-0.1	0.05	0.00	
231.0	0.00	280.40	231.0	-0.1	0.1	-0.1	0.32	-0.32	
262.0	0.50	121.20	262.0	-0.1	0.2	-0.2	1.61	1.61	
293.0	0.40	176.90	293.0	-0.3	0.3	-0.4	1.39	-0.32	
324.0	0.40	349.60	324.0	-0.3	0.3	-0.4	2.58	0.00	
354.0	1.30	338.10	354.0	0.1	0.2	0.0	3.04	3.00	
385.0	2.20	339.00	385.0	1.0	-0.2	0.9	2.90	2.90	
416.0	3.10	334.10	415.9	2.3	-0.8	2.3	2.99	2.90	
447.0	4.40	330.20	446.9	4.1	-1.7	4.2	4.27	4.19	

# Cathedral Energy Services

## Survey Report

<b>Company:</b>	EnCana Oil & Gas (USA) Inc	<b>Local Co-ordinate Reference:</b>	Well Daybreak Federal 19-6 (PJ-19) Directional P
<b>Project:</b>	S. Piceance (Parachute)	<b>TVD Reference:</b>	KBE @ 5449.0ft (Original Well Elev)
<b>Site:</b>	NWSE S19-T7S-R95W (PJ-19 Pad)	<b>MD Reference:</b>	KBE @ 5449.0ft (Original Well Elev)
<b>Well:</b>	Daybreak Federal 19-6 (PJ-19) Directional Plan	<b>North Reference:</b>	True
<b>Wellbore:</b>	DD1.2011	<b>Survey Calculation Method:</b>	Minimum Curvature
<b>Design:</b>	DD	<b>Database:</b>	USA EDM 5000 Multi Users DB

Survey									
Measured Depth (ft)	Inclination (°)	Azimuth (°)	Vertical Depth (ft)	+N/-S (ft)	+E/-W (ft)	Vertical Section (ft)	Dogleg Rate (°/100ft)	Build Rate (°/100ft)	Formations / Comments
478.0	5.70	329.20	477.8	6.4	-3.1	6.9	4.20	4.19	
508.0	6.90	330.20	507.6	9.3	-4.7	10.2	4.02	4.00	
539.0	8.20	329.70	538.3	12.8	-6.8	14.2	4.20	4.19	
570.0	9.50	328.20	568.9	16.9	-9.3	18.9	4.26	4.19	
600.0	11.00	329.30	598.5	21.5	-12.0	24.2	5.04	5.00	
631.0	12.00	330.60	628.8	26.8	-15.1	30.3	3.33	3.23	
662.0	13.20	332.00	659.1	32.7	-18.4	37.0	3.99	3.87	
692.0	14.30	332.30	688.2	39.1	-21.7	43.9	3.67	3.67	
722.0	15.70	332.00	717.2	45.9	-25.3	51.5	4.67	4.67	
753.0	17.20	329.00	746.9	53.6	-29.6	60.2	5.56	4.84	
784.0	18.10	328.90	776.5	61.6	-34.5	69.5	2.90	2.90	
815.0	19.80	329.60	805.8	70.3	-39.6	79.4	5.53	5.48	
846.0	21.40	330.00	834.8	79.7	-45.1	90.2	5.18	5.16	
877.0	22.50	330.70	863.6	89.8	-50.9	101.6	3.65	3.55	
969.0	25.70	332.20	947.5	122.8	-68.8	138.5	3.54	3.48	
1,062.0	27.00	329.90	1,030.9	158.9	-88.8	179.1	1.78	1.40	
1,154.0	27.20	329.30	1,112.8	195.0	-110.0	220.5	0.37	0.22	
1,170.0	27.60	330.10	1,127.0	201.4	-113.7	227.7	3.40	2.50	Last Cathedral Survey @ 1,170' MD
1,259.0	27.29	330.62	1,206.0	237.0	-134.0	268.2	0.44	-0.35	
1,354.0	26.67	330.98	1,290.6	274.6	-155.0	310.6	0.67	-0.65	
1,385.0	26.54	330.18	1,318.3	286.7	-161.8	324.2	1.23	-0.42	
1,417.0	26.76	326.76	1,346.9	299.0	-169.3	338.5	4.84	0.69	
1,449.0	27.77	326.32	1,375.4	311.2	-177.4	353.0	3.22	3.16	
1,480.0	28.87	325.09	1,402.7	323.3	-185.7	367.7	4.02	3.55	
1,512.0	29.62	323.42	1,430.6	336.0	-194.8	383.3	3.46	2.34	
1,543.0	30.54	322.71	1,457.4	348.4	-204.2	398.8	3.18	2.97	
1,574.0	31.46	320.25	1,484.0	360.9	-214.1	414.8	5.05	2.97	
1,606.0	32.26	320.43	1,511.2	373.9	-224.9	431.7	2.52	2.50	
1,638.0	33.40	319.29	1,538.1	387.2	-236.1	449.0	4.05	3.56	
1,735.0	33.66	319.46	1,618.9	427.9	-271.0	502.6	0.28	0.27	
1,830.0	34.80	317.62	1,697.5	467.9	-306.4	556.0	1.62	1.20	
1,926.0	35.33	317.18	1,776.0	508.5	-343.7	611.0	0.61	0.55	
2,021.0	34.85	318.58	1,853.8	549.0	-380.3	665.6	0.99	-0.51	
2,116.0	36.78	317.53	1,930.8	590.3	-417.5	721.1	2.13	2.03	
2,212.0	36.39	317.09	2,007.9	632.4	-456.3	778.2	0.49	-0.41	
2,306.0	35.68	315.59	2,083.9	672.4	-494.4	833.4	1.20	-0.76	
2,401.0	36.65	317.62	2,160.6	713.1	-532.9	889.3	1.62	1.02	
2,496.0	35.95	316.39	2,237.2	754.3	-571.3	945.4	1.06	-0.74	
2,591.0	37.05	320.08	2,313.6	796.4	-608.9	1,001.9	2.58	1.16	
2,686.0	36.47	319.11	2,389.7	839.7	-645.7	1,058.7	0.86	-0.61	
2,782.0	35.77	318.06	2,467.2	882.2	-683.2	1,115.3	0.97	-0.73	
2,876.0	34.94	317.09	2,543.9	922.3	-719.9	1,169.6	1.07	-0.88	
2,972.0	36.17	318.93	2,622.0	963.8	-757.2	1,225.4	1.70	1.28	
3,067.0	35.77	320.08	2,698.9	1,006.2	-793.4	1,281.1	0.83	-0.42	
3,162.0	35.68	320.25	2,776.0	1,048.8	-829.0	1,336.6	0.14	-0.09	
3,257.0	35.11	319.64	2,853.4	1,090.9	-864.4	1,391.6	0.71	-0.60	
3,352.0	33.97	318.08	2,931.7	1,131.5	-899.8	1,445.5	1.52	-1.20	
3,448.0	33.71	319.73	3,011.4	1,171.8	-934.9	1,498.9	0.99	-0.27	
3,543.0	32.70	319.99	3,090.9	1,211.6	-968.5	1,550.9	1.07	-1.06	
3,638.0	30.32	321.48	3,171.9	1,250.0	-999.9	1,600.6	2.64	-2.51	
3,733.0	28.48	317.79	3,254.7	1,285.5	-1,030.1	1,647.2	2.72	-1.94	
3,828.0	28.39	317.88	3,338.2	1,319.1	-1,060.4	1,692.4	0.10	-0.09	
3,923.0	25.27	318.06	3,423.0	1,350.9	-1,089.1	1,735.2	3.29	-3.28	

# Cathedral Energy Services

## Survey Report

<b>Company:</b>	EnCana Oil & Gas (USA) Inc	<b>Local Co-ordinate Reference:</b>	Well Daybreak Federal 19-6 (PJ-19) Directional P
<b>Project:</b>	S. Piceance (Parachute)	<b>TVD Reference:</b>	KBE @ 5449.0ft (Original Well Elev)
<b>Site:</b>	NWSE S19-T7S-R95W (PJ-19 Pad)	<b>MD Reference:</b>	KBE @ 5449.0ft (Original Well Elev)
<b>Well:</b>	Daybreak Federal 19-6 (PJ-19) Directional Plan	<b>North Reference:</b>	True
<b>Wellbore:</b>	DD1.2011	<b>Survey Calculation Method:</b>	Minimum Curvature
<b>Design:</b>	DD	<b>Database:</b>	USA EDM 5000 Multi Users DB

Survey									
Measured Depth (ft)	Inclination (°)	Azimuth (°)	Vertical Depth (ft)	+N/-S (ft)	+E/-W (ft)	Vertical Section (ft)	Dogleg Rate (°/100ft)	Build Rate (°/100ft)	Formations / Comments
4,017.0	23.20	317.88	3,508.7	1,379.6	-1,115.0	1,773.7	2.20	-2.20	
4,112.0	21.40	316.65	3,596.6	1,406.1	-1,139.4	1,809.7	1.96	-1.89	
4,208.0	19.34	319.46	3,686.6	1,430.9	-1,161.8	1,843.1	2.37	-2.15	
4,303.0	16.57	317.97	3,776.9	1,452.9	-1,181.1	1,872.4	2.96	-2.92	
4,398.0	14.81	316.12	3,868.4	1,471.7	-1,198.6	1,898.0	1.93	-1.85	
4,493.0	13.32	320.69	3,960.5	1,488.9	-1,213.9	1,921.0	1.96	-1.57	
4,588.0	12.66	321.92	4,053.1	1,505.6	-1,227.3	1,942.4	0.75	-0.69	
4,683.0	12.61	321.66	4,145.8	1,521.9	-1,240.1	1,963.2	0.08	-0.05	
4,778.0	8.88	315.59	4,239.1	1,535.3	-1,251.7	1,980.9	4.10	-3.93	
4,874.0	6.02	313.66	4,334.3	1,544.1	-1,260.5	1,993.2	2.99	-2.98	
4,969.0	3.96	322.71	4,428.9	1,550.1	-1,266.1	2,001.5	2.31	-2.17	
5,064.0	2.50	322.27	4,523.8	1,554.4	-1,269.4	2,006.8	1.54	-1.54	
5,159.0	2.20	299.60	4,618.7	1,556.9	-1,272.2	2,010.6	1.02	-0.32	
5,255.0	1.89	294.94	4,714.7	1,558.5	-1,275.3	2,013.7	0.37	-0.32	
5,350.0	1.98	270.86	4,809.6	1,559.2	-1,278.3	2,016.2	0.85	0.09	
5,445.0	0.75	232.36	4,904.6	1,558.8	-1,280.5	2,017.3	1.55	-1.29	
5,540.0	1.01	113.36	4,999.6	1,558.1	-1,280.2	2,016.6	1.60	0.27	
5,636.0	1.05	155.37	5,095.5	1,557.0	-1,279.0	2,015.0	0.77	0.04	
5,730.0	1.23	187.80	5,189.5	1,555.2	-1,278.8	2,013.4	0.70	0.19	
5,825.0	0.92	33.90	5,284.5	1,554.8	-1,278.5	2,013.0	2.21	-0.33	
5,920.0	0.92	35.05	5,379.5	1,556.1	-1,277.7	2,013.4	0.02	0.00	
6,015.0	1.14	72.93	5,474.5	1,557.0	-1,276.3	2,013.2	0.74	0.23	
6,111.0	0.35	7.80	5,570.5	1,557.5	-1,275.4	2,013.1	1.09	-0.82	
6,206.0	0.35	141.22	5,665.5	1,557.6	-1,275.1	2,013.0	0.68	0.00	
6,301.0	0.62	182.70	5,760.5	1,556.9	-1,275.0	2,012.3	0.45	0.28	
6,396.0	0.26	204.59	5,855.5	1,556.1	-1,275.1	2,011.8	0.41	-0.38	
6,492.0	1.05	216.63	5,951.5	1,555.2	-1,275.7	2,011.5	0.83	0.82	
6,587.0	0.97	217.33	6,046.5	1,553.9	-1,276.7	2,011.1	0.09	-0.08	
6,630.0	1.27	201.42	6,089.4	1,553.2	-1,277.1	2,010.8	1.00	0.70	Last Cathedral Survey @ 6,630' MD Projection to Bit @ 6,680'
6,680.0	1.27	201.42	6,139.4	1,552.1	-1,277.5	2,010.3	0.00	0.00	

# Cathedral Energy Services

## Survey Report

<b>Company:</b>	EnCana Oil & Gas (USA) Inc	<b>Local Co-ordinate Reference:</b>	Well Daybreak Federal 19-6 (PJ-19) Directional P
<b>Project:</b>	S. Piceance (Parachute)	<b>TVD Reference:</b>	KBE @ 5449.0ft (Original Well Elev)
<b>Site:</b>	NWSE S19-T7S-R95W (PJ-19 Pad)	<b>MD Reference:</b>	KBE @ 5449.0ft (Original Well Elev)
<b>Well:</b>	Daybreak Federal 19-6 (PJ-19) Directional Plan	<b>North Reference:</b>	True
<b>Wellbore:</b>	DD1.2011	<b>Survey Calculation Method:</b>	Minimum Curvature
<b>Design:</b>	DD	<b>Database:</b>	USA EDM 5000 Multi Users DB

Targets									
Target Name	Dip Angle	Dip Dir.	TVD	+N/-S	+E/-W	Northing	Easting	Latitude	Longitude
- hit/miss target	(°)	(°)	(ft)	(ft)	(ft)	(ft)	(ft)		
- Shape									
Interp @ 1076.8 (Daybreak) - actual wellpath misses target center by 35.9ft at 1095.2ft MD (1060.5 TVD, 171.9 N, -96.4 E) - Point	0.00	0.00	1,076.8	143.6	-81.5	1,588,500.17	2,282,843.24	39.421674	-108.038968
Daybreak Federal 19-6 ( ) - actual wellpath misses target center by 7.9ft at 6626.5ft MD (6086.0 TVD, 1553.2 N, -1277.1 E) - Circle (radius 25.0)	0.00	0.00	6,086.0	1,559.0	-1,282.5	1,589,948.52	2,281,682.26	39.425560	-108.043220
Daybreak Federal 19-6 ( ) - actual wellpath misses target center by 339.6ft at 4622.5ft MD (4086.7 TVD, 1511.5 N, -1231.9 E) - Point	0.00	0.00	4,124.0	1,562.6	-898.3	1,589,941.41	2,282,066.39	39.425570	-108.041860
Daybreak Federal 19-6 ( ) - actual wellpath misses target center by 17.4ft at 4990.0ft MD (4449.9 TVD, 1551.2 N, -1267.0 E) - Point	0.00	0.00	4,449.0	1,559.0	-1,282.5	1,589,948.52	2,281,682.26	39.425560	-108.043220
Daybreak Federal 19-6 ( ) - actual wellpath misses target center by 378.9ft at 6622.9ft MD (6082.4 TVD, 1553.3 N, -1277.1 E) - Circle (radius 25.0)	0.00	0.00	6,086.0	1,562.6	-898.3	1,589,941.41	2,282,066.39	39.425570	-108.041860

Design Annotations				
Measured Depth	Vertical Depth	Local Coordinates		Comment
(ft)	(ft)	+N/-S (ft)	+E/-W (ft)	
1,170.0	1,127.0	201.4	-113.7	Last Cathedral Survey @ 1,170' MD
6,630.0	6,089.4	1,553.2	-1,277.1	Last Cathedral Survey @ 6,630' MD
6,680.0	6,139.4	1,552.1	-1,277.5	Projection to Bit @ 6,680'

Checked By: \_\_\_\_\_ Approved By: \_\_\_\_\_ Date: \_\_\_\_\_