

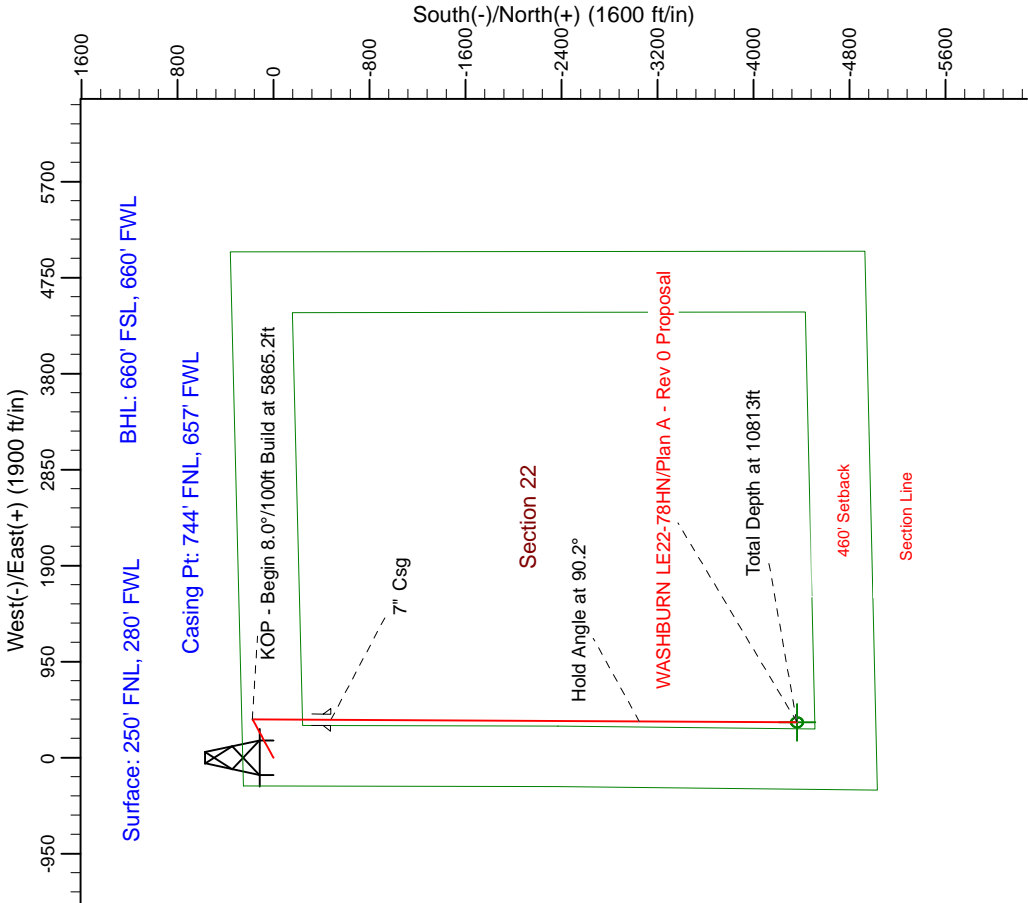
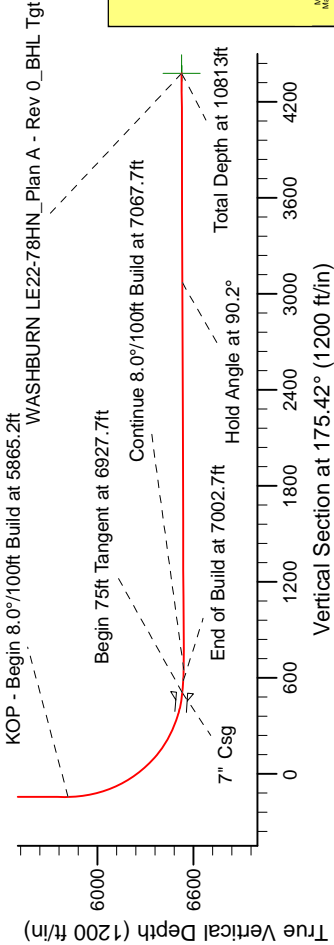
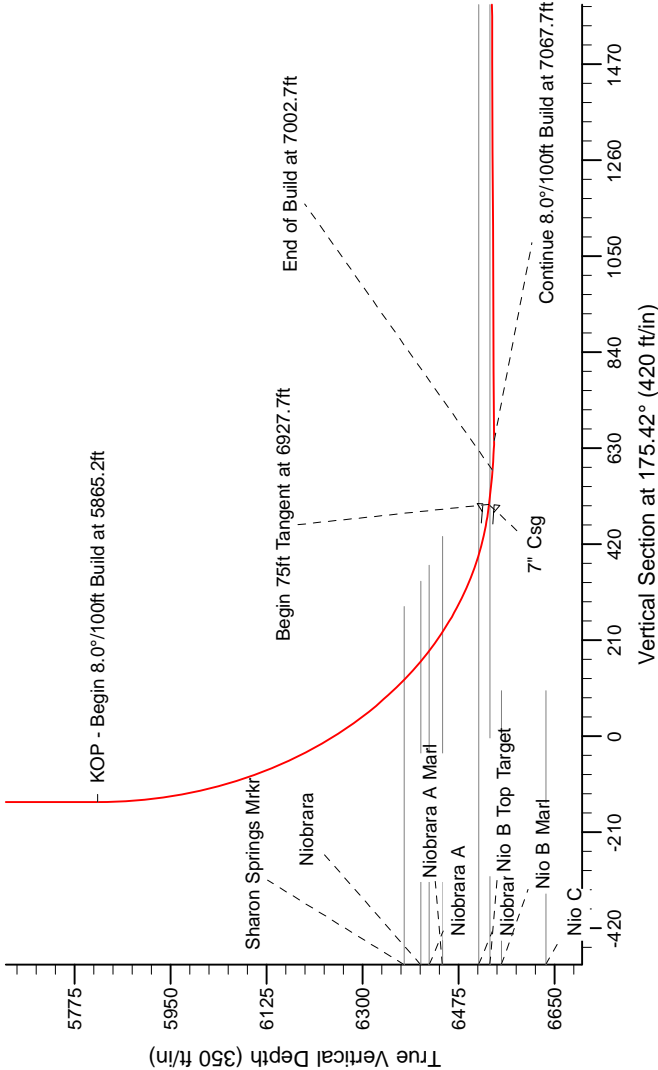
Project: Weld County Colorado (NAD 83)  
Site: Sec. 22, T8N, R61W  
Well: WASHBURN LE22-78HN  
Wellbore: Plan A - Rev 0 (PERMITTING PLAN ONLY)  
Design: Plan A - Rev 0 Proposal

# Noble Energy



SECTION DETAILS

Sec	MD	Inc	Azi	TVD	+N/-S	+E/-W	Dleg	TFace	VSec	Target
1	0.0	0.00	0.00	0.0	0.0	0.0	0.00	0.00	0.0	0.0
2	2500.0	0.00	0.00	2500.0	0.0	0.0	0.00	0.00	0.0	0.0
3	3099.9	15.00	65.27	3093.1	32.7	70.9	2.50	65.27	-26.9	-117.2
4	4113.3	15.00	65.27	4071.9	142.3	309.1	0.00	0.00	-117.2	-117.2
5	4713.2	0.00	0.00	4665.0	175.0	380.0	2.50	180.00	-144.1	-144.1
6	5865.2	0.00	0.00	5817.0	175.0	380.0	0.00	0.00	-144.1	-144.1
7	6927.7	85.00	180.38	6530.5	-478.8	375.7	8.00	180.38	507.3	507.3
8	7002.7	85.00	180.38	6537.0	-553.5	375.2	0.00	0.00	581.7	581.7
9	7067.7	90.20	180.38	6539.7	-618.4	374.7	8.00	0.00	646.4	646.4
10	813.0	90.20	180.38	6526.7	-4363.6	349.8	0.00	135.22	4377.6	WASHBURN LE22-78HN_Plan A - Rev 0_BHL Tgt



WELL DETAILS: WASHBURN LE22-78HN(NAD 83 Geodecti System)			
Northing	Easting	Ground Level:	Longitude
452226.41	1024323.22	4985.0	104° 12' 0.792 W
Plant: Plan A - Rev 0 Proposal (WASHBURN LE22-78HN/Plan A - Rev 0 (PERMITTING PLAN ONLY))			
Created By: Erasmo Mendoza		Date: 14:14, December 21, 2011	

Magnetic North: 65°59'58.11"  
Date: 12/20/11  
Indication: 7.62°  
Dip Angle: 67.34°  
Field Strength: 53288.8

G  
M  
T

Grid North is 10° East of True North (Grid Convergence)  
Magnetic North is 10° East of True North (Magnetic Deviation)  
True North is 10° East of Grid North (Grid Deviation)  
To convert to Magnetic: Deviation is a Grid Deviation, Add 7.62°

Magnetic North: 65°59'58.11"  
Date: 12/20/11  
Indication: 7.62°  
Dip Angle: 67.34°  
Field Strength: 53288.8

G  
M  
T

Grid North is 10° East of True North (Grid Convergence)  
Magnetic North is 10° East of True North (Magnetic Deviation)  
True North is 10° East of Grid North (Grid Deviation)  
To convert to Magnetic: Deviation is a Grid Deviation, Add 7.62°