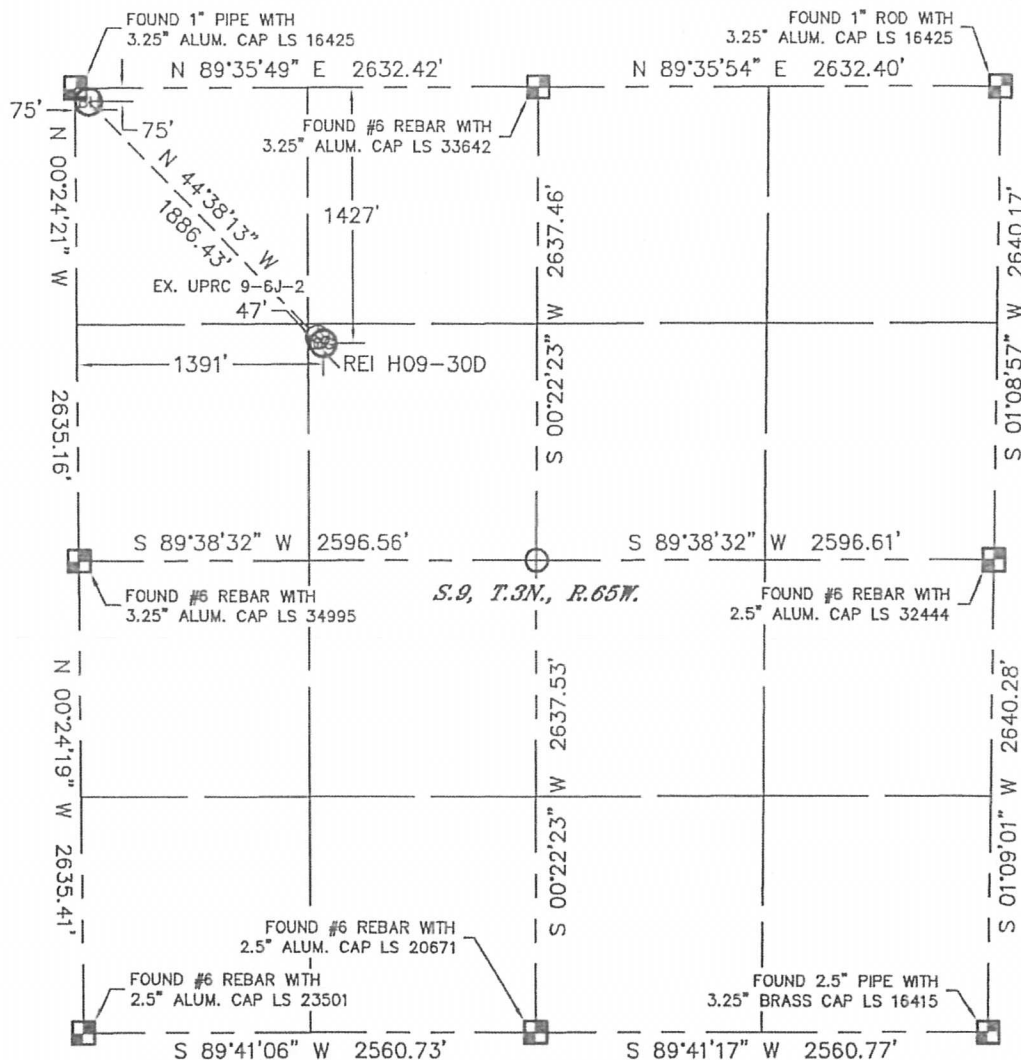


Lat40°, Inc. 1635 Foxtrail Drive, Suite 325 Loveland, CO 970-776-3321

WELL LOCATION CERTIFICATE

THIS MAP DOES NOT REPRESENT A BOUNDARY SURVEY

SECTION: 9
TOWNSHIP: 3N
RANGE: 65W



In accordance with a request from Tony Patterson with Noble Energy Inc., Lat40°, Inc. has determined the surface location of the REI H09-30D to be 1427' from the NORTH line and 1391' from the WEST line and the bottom hole to be 75' from the NORTH line and 75' from the WEST line as measured at right angles from the section lines of Section 9, Township 3 North, Range 65 West of the Sixth Principal Meridian, County of Weld, State of Colorado.

I hereby state that this Well Location Certificate was prepared by me, or under my direct supervision, that the fieldwork was completed on 7/18/11, for and on behalf of Noble Energy Inc.. That this is not a Land Survey Plat or an Improvement Survey Plat, and that it is not to be relied upon for establishment of fence, building, or other future Improvement lines.



NOTE:

- 1) Bearings shown are Grid Bearings of the Colorado State Plane Coordinate System, North Zone, North American Datum 1983/2007. The lineal dimensions as contained herein are based upon the "U.S. Survey Foot."
- 2) Ground elevations are based on an observed GPS elevation (NAVD 1988 DATUM).
- 3) NEAREST EXISTING WELL: UPRC 9-6J-2, 47'
- 4) IMPROVEMENTS: See LOCATION DRAWING for all visible Improvements within 400' of disturbed area.
- 5) SURFACE USE: RANGELAND
- 6) INSTRUMENT OPERATOR: ADAM KELLY

NOTE

According to Colorado law, you must commence any legal action based upon any defect in this W.L.C. within three years after you discover such defect. In no event, may any action based upon any defect in this survey be commenced more than ten years after the date of the certificate shown hereon. (13-80-105 C.R.S.)

LEGEND

-  = ALIQUOT MONUMENT AS DESCRIBED
-  = CALCULATED POSITION

SURFACE LOCATION
LATITUDE: 40.24321°N
LONGITUDE: 104.67274°W
PDOP: 2.4
ELEV: 4830'
1/4, 1/4: SE1/4NW1/4
NEAREST PROPERTY LINE: 151' SW

BOTTOM HOLE
LATITUDE: 40.24692°N
LONGITUDE: 104.67744°W



Brian T. Brinkman—On behalf of Lat40°, Inc.
Colorado Licensed Professional
Land Surveyor No. 38175

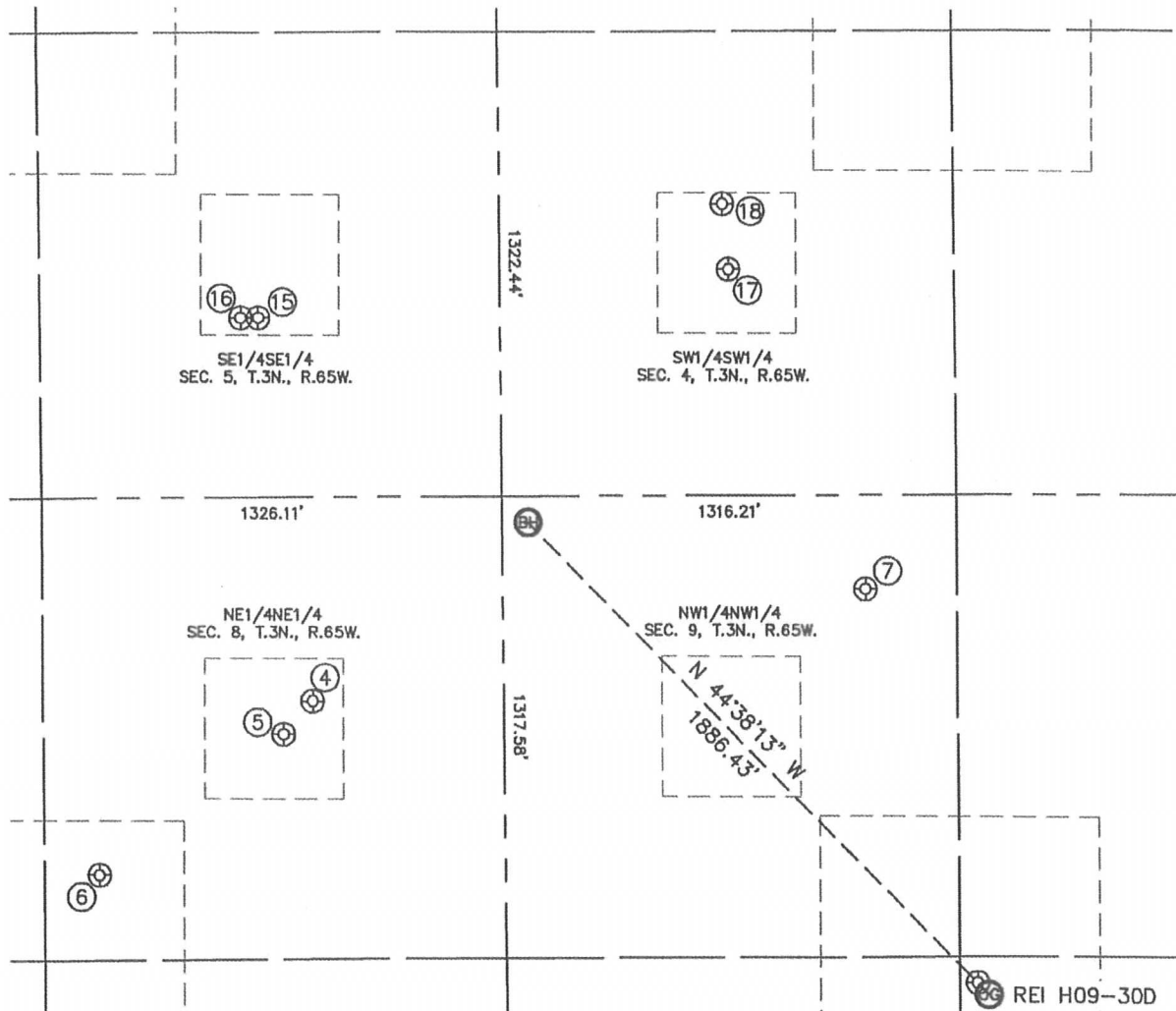
PROJECT#: 2011172

Lat40°, Inc. 1635 Foxtrail Drive, Suite 325 Loveland, CO 970-776-3321

SITE SKETCH

REI H09-30D

SECTION: 9
TOWNSHIP: 3N
RANGE: 65W



④
ARISTOCRAT ANGUS
41-BA
NE1/4NE1/4
582' FNL
550' FEL
LAT-40.24554°N
LONG-104.67968°W
PDOP: 1.6
ELEV: 4864'

⑤
ARISTOCRAT ANGUS
41-B
NE1/4NE1/4
676' FNL
634' FEL
LAT-40.24528°N
LONG-104.67998°W
PDOP: 1.6
ELEV: 4863'

⑥
BB DRAW H8-1J
NE1/4NE1/4
1075' FNL
1169' FEL
LAT-40.24419°N
LONG-104.68190°W
PDOP: 1.6
ELEV: 4898'

⑦
UPRC 9-4J
NW1/4NW1/4
268' FNL
1049' FWL
LAT-40.24639°N
LONG-104.67395°W
PDOP: 2.2
ELEV: 4841'

⑮
HSR-GOODNOW 16-5A
SE1/4SE1/4
511' FSL
698' FEL
LAT-40.24854°N
LONG-104.68020°W
PDOP: 1.6
ELEV: 4890'

⑯
REI 31-5HZ
SE1/4SE1/4
511' FSL
749' FEL
LAT-40.24854°N
LONG-104.68039°W
PDOP: 1.3
ELEV: 4889'

⑰
ARISTOCRAT ANGUS
14-4
SW1/4SW1/4
644' FSL
664' FWL
LAT-40.24889°N
LONG-104.67533°W
PDOP: 1.6
ELEV: 4844'

⑱
ARISTOCRAT ANGUS
14-4C
SW1/4SW1/4
830' FSL
648' FWL
LAT-40.24941°N
LONG-104.67539°W
PDOP: 2.2
ELEV: 4835'

