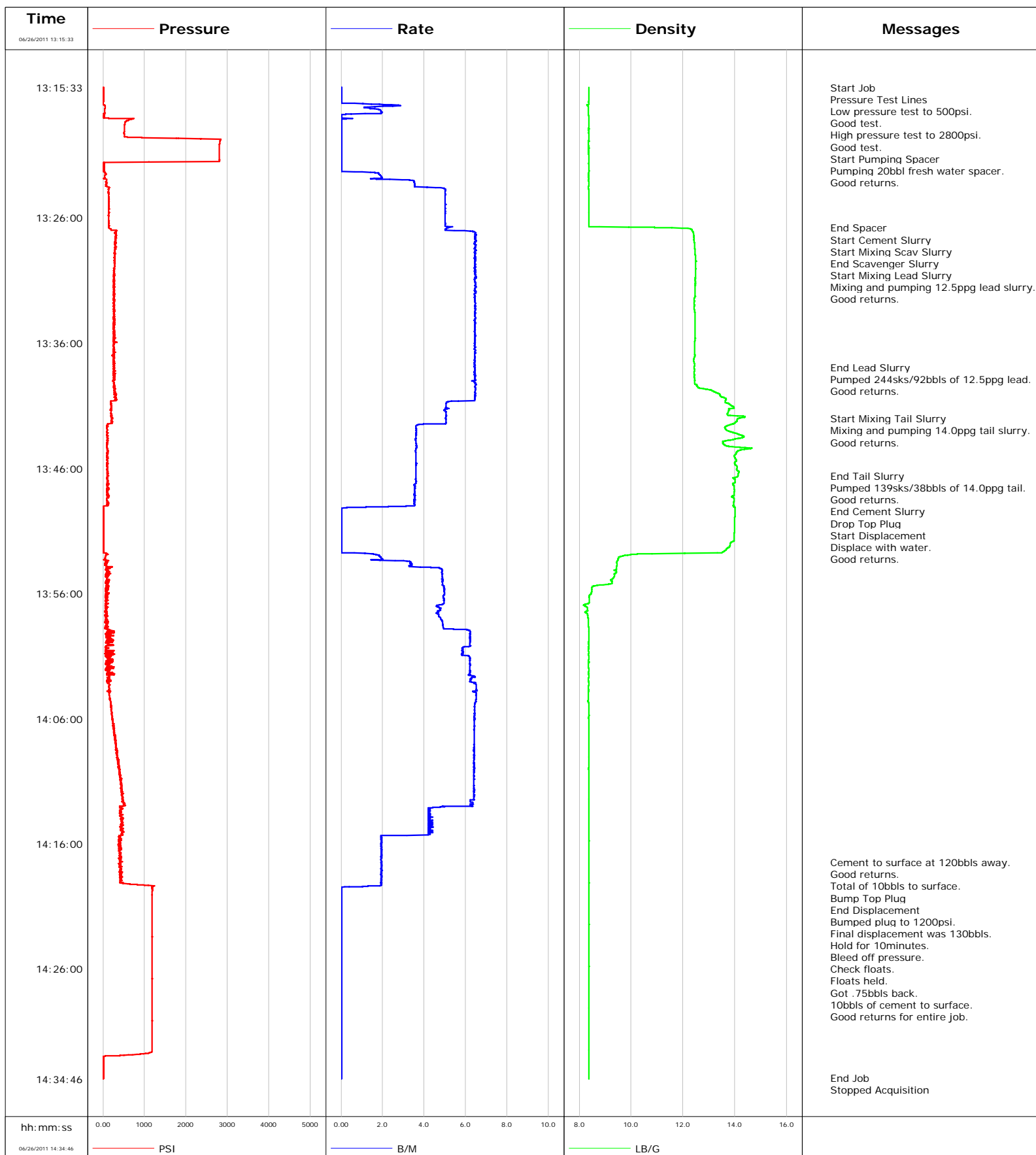


Well WF12B-26 H26 596
Field N. PARACHUTE
Engineer JEFF PATTERSON
Country United States

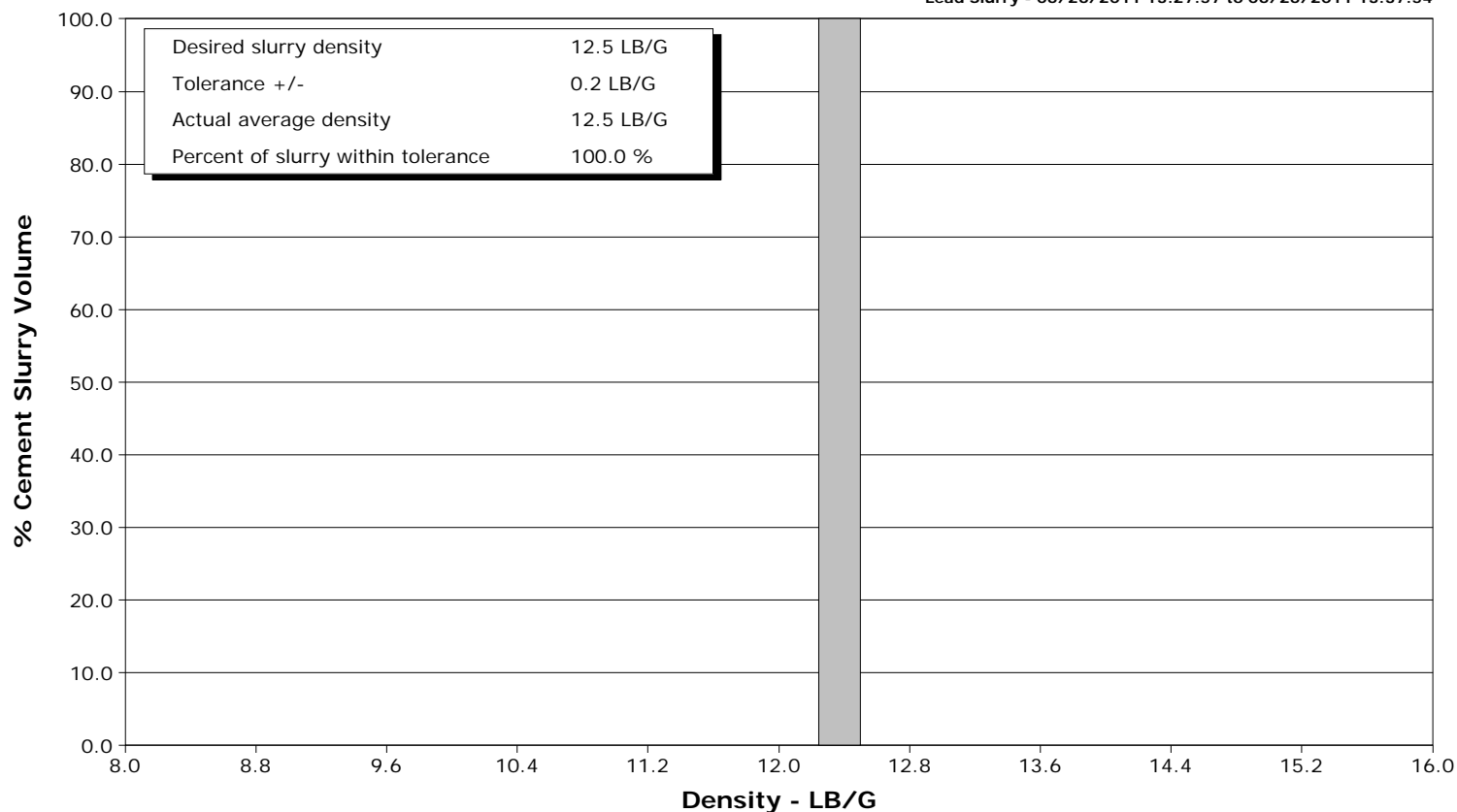
Client ENCANA
SIR No. BRWT-00082
Job Type 9 5/8" SURFACE
Job Date 06-26-2011



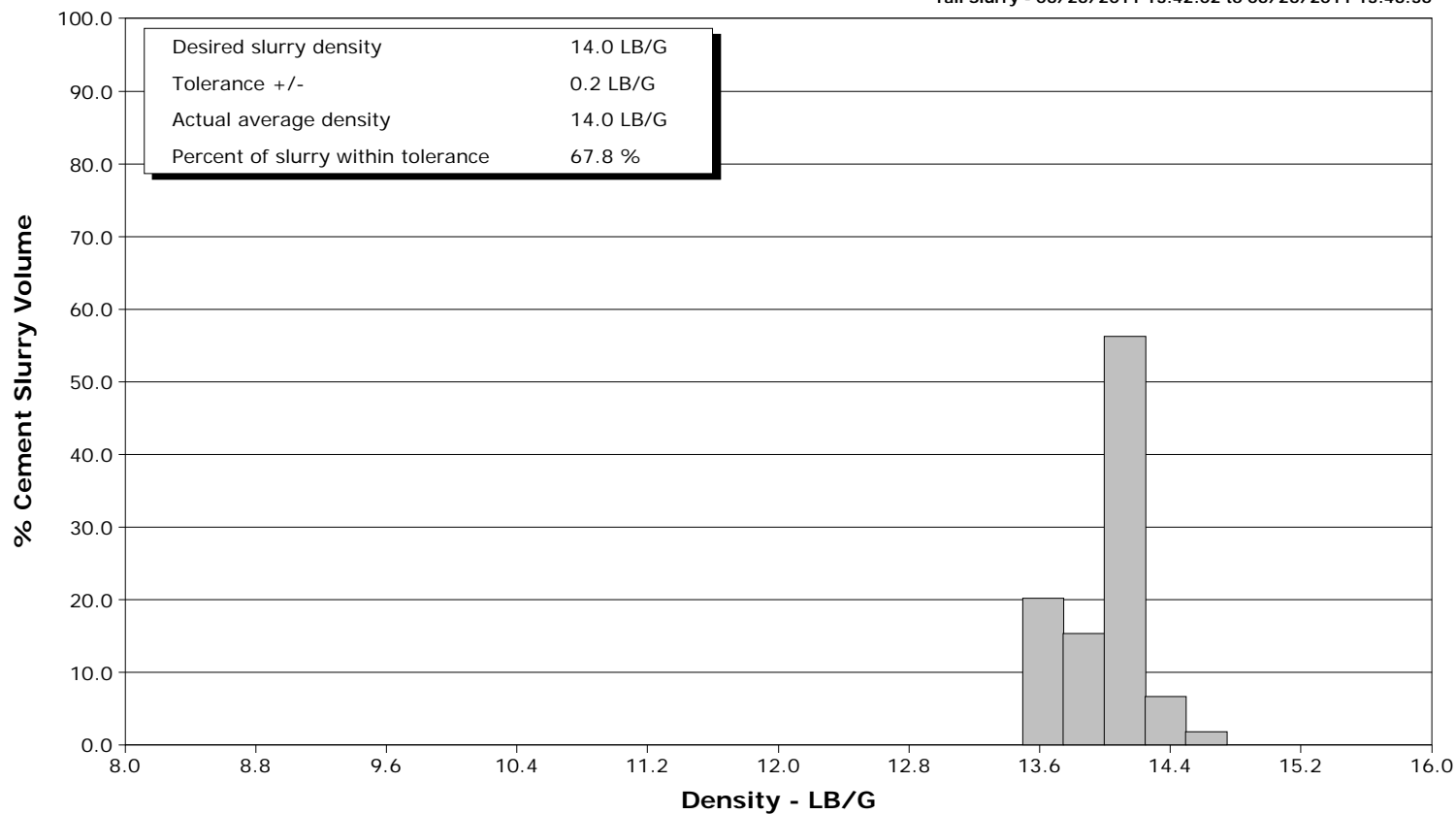
Well WF12B-26 H26 596
Field N. PARACHUTE
Engineer JEFF PATTERSON
Country United States

Client ENCANA
SIR No. BRWT-00082
Job Type 9 5/8" SURFACE
Job Date 06-26-2011

Lead Slurry - 06/26/2011 13:27:57 to 06/26/2011 13:37:54



Tail Slurry - 06/26/2011 13:42:02 to 06/26/2011 13:46:36





Cementing Service Report

				Customer ENCANA			Job Number BRWT-00082		
Well WF12B-26 H26 596 WF12B-26 H26 596			Location (legal) WF H26		Schlumberger Location GRAND JUNCTION,COLORADO			Job Start Jun/26/2011	
Field N. PARACHUTE		Formation Name/Type SHALE		Deviation 0 deg	Bit Size 12.3 in		Well MD 1741.0 ft		Well TVD 1741.0 ft
County GARFIELD		State/Province Colorado		BHP	BHST 100 degF		BHCT 87 degF		Pore Press. Gradient
Well Master 0631280613		API/UWI							
Rig Name PATTERSON 303	Drilled For Gas		Service Via Land	Casing/Liner					
				Depth, ft	Size, in	Weight, lb/ft	Grade		Thread
Offshore Zone	Well Class New		Well Type Development	1741.0	9.630	36.0	J55		8RD
				0.0	0.000	0.0			
Drilling Fluid Type		Max. Density	Plastic Viscosity	Tubing/Drill Pipe					
				Depth,	Size,	Weight,	Grade		Thread
Service Line Cementing	Job Type 9 5/8" SURFACE								
Max. Allowed Tub. Press 2500 psi	Max. Allowed Ann. Press		WH Connection 9 5/8" CEMENT HEAD	Perforations/Open Hole					
				Top,	Bottom,			No. of Shots	Total Interval
									Diameter
Service Instructions CEMENT SURFACE CASING WITH. 244SKS 12.5PPG LEAD. 139SKS 14.OPPG TAIL. DISPLACE WITH WATER.				Treat Down Casing	Displacement 131.4 bbl		Packer Type		Packer Depth
				Tubing Vol.	Casing Vol. 134.6 bbl		Annular Vol. 107.0 bbl		Openhole Vol. 251.0 bbl
Casing/Tubing Secured <input checked="" type="checkbox"/>		1 Hole Vol. Circulated prior to Cement <input checked="" type="checkbox"/>		Casing Tools			Squeeze Job		
Lift Pressure 861 psi				Shoe Type Guide			Squeeze Type		
Pipe Rotated <input type="checkbox"/>		Pipe Reciprocated <input type="checkbox"/>		Shoe Depth 1741.0 ft			Tool Type		
No. Centralizers		Top Plugs 1	Bottom Plugs	Stage Tool Type			Tool Depth		
Cement Head Type Single				Stage Tool Depth			Tail Pipe Size		
Job Scheduled For Jun/26/2011		Arrived on Location Jun/26/2011		Leave Location Jun/26/2011		Collar Type Float		Tail Pipe Depth	
						Collar Depth 1699.0 ft		Sqz. Total Vol.	
Date	Time 24-hr clock	Treating Pressure PSI	Flow Rate B/M	Density LB/G	Volume BBL	Message			
06/26/2011	12:38:50					Started Acquisition			
06/26/2011	13:15:33					Start Job			
06/26/2011	13:15:33	4	0.0	8.36	0.0				
06/26/2011	13:15:36					Pressure Test Lines			
06/26/2011	13:15:36	4	0.0	8.36	0.0				
06/26/2011	13:15:37					Low pressure test to 500psi.			
06/26/2011	13:15:37	4	0.0	8.36	0.0				
06/26/2011	13:15:38					Good test.			
06/26/2011	13:15:38					High pressure test to 2800psi.			
06/26/2011	13:15:38					Good test.			
06/26/2011	13:15:38	4	0.0	8.36	0.0				
06/26/2011	13:15:41					Start Pumping Spacer			
06/26/2011	13:15:41	4	0.0	8.36	0.0				
06/26/2011	13:15:42					Pumping 20bbl fresh water spacer.			
06/26/2011	13:15:42					Good returns.			
06/26/2011	13:15:42	2	0.0	8.36	0.0				
06/26/2011	13:17:10	54	1.1	8.36	0.6				
06/26/2011	13:18:50	517	0.0	8.36	1.5				
06/26/2011	13:20:30	2804	0.0	8.36	1.5				
06/26/2011	13:22:10	18	0.0	8.36	1.5				
06/26/2011	13:23:50	134	5.0	8.37	6.2				

Well WF12B-26 H26 596 WF12B-26 H26 596			Field N. PARACHUTE	Job Start Jun/26/2011	Customer ENCANA	Job Number BRWT-00082
Date	Time 24-hr clock	Treating Pressure PSI	Flow Rate B/M	Density LB/G	Volume BBL	Message
06/26/2011	13:26:46					End Spacer
06/26/2011	13:26:46	138	5.2	10.91	21.0	
06/26/2011	13:26:47					Start Cement Slurry
06/26/2011	13:26:47					Start Mixing Scav Slurry
06/26/2011	13:26:47	138	5.1	11.58	21.1	
06/26/2011	13:27:10	299	6.5	12.40	23.2	
06/26/2011	13:27:56					End Scavenger Slurry
06/26/2011	13:27:56	280	6.5	12.43	28.2	
06/26/2011	13:27:57					Start Mixing Lead Slurry
06/26/2011	13:27:57	280	6.4	12.44	28.3	
06/26/2011	13:27:58					Mixing and pumping 12.5ppg lead slurry.
06/26/2011	13:27:58					Good returns.
06/26/2011	13:27:58	317	6.5	12.44	28.4	
06/26/2011	13:28:50	298	6.5	12.46	34.0	
06/26/2011	13:30:30	262	6.5	12.48	44.7	
06/26/2011	13:32:10	245	6.4	12.47	55.5	
06/26/2011	13:33:50	271	6.5	12.46	66.3	
06/26/2011	13:35:30	253	6.5	12.46	77.0	
06/26/2011	13:37:10	286	6.4	12.44	87.8	
06/26/2011	13:37:54					End Lead Slurry
06/26/2011	13:37:54	270	6.4	12.43	92.5	
06/26/2011	13:37:57					Pumped 244sks/92bbls of 12.5ppg lead.
06/26/2011	13:37:57					Good returns.
06/26/2011	13:37:57	275	6.5	12.43	92.8	
06/26/2011	13:38:50	258	6.5	12.44	98.5	
06/26/2011	13:40:30	298	6.4	13.66	109.3	
06/26/2011	13:42:02					Start Mixing Tail Slurry
06/26/2011	13:42:02	213	5.0	14.11	117.2	
06/26/2011	13:42:04					Mixing and pumping 14.0ppg tail slurry.
06/26/2011	13:42:04					Good returns.
06/26/2011	13:42:04	216	5.0	14.10	117.4	
06/26/2011	13:42:10	206	5.0	14.10	117.9	
06/26/2011	13:43:50	101	3.6	13.56	124.4	
06/26/2011	13:45:30	114	3.6	14.00	130.4	
06/26/2011	13:46:36					End Tail Slurry
06/26/2011	13:46:36	120	3.6	14.12	134.3	
06/26/2011	13:46:37					Pumped 139sks/38bbls of 14.0ppg tail.
06/26/2011	13:46:37					Good returns.
06/26/2011	13:46:37	102	3.6	14.11	134.4	
06/26/2011	13:46:38					End Cement Slurry
06/26/2011	13:46:38	98	3.6	14.11	134.5	
06/26/2011	13:46:40					Drop Top Plug
06/26/2011	13:46:40					Start Displacement
06/26/2011	13:46:40	104	3.6	14.11	134.6	
06/26/2011	13:46:41					Displace with water.
06/26/2011	13:46:41					Good returns.
06/26/2011	13:46:41	104	3.6	14.10	134.6	
06/26/2011	13:47:10	98	3.6	13.95	136.4	
06/26/2011	13:48:50	128	3.5	13.95	142.3	
06/26/2011	13:50:30	7	0.0	13.99	143.2	
06/26/2011	13:52:10	8	0.0	13.82	143.2	
06/26/2011	13:53:50	77	3.3	9.45	145.8	
06/26/2011	13:55:30	74	5.0	8.49	153.8	
06/26/2011	13:57:10	49	4.8	8.32	162.0	

Well WF12B-26 H26 596 WF12B-26 H26 596			Field N. PARACHUTE		Job Start Jun/26/2011	Customer ENCANA	Job Number BRWT-00082
Date	Time 24-hr clock	Treating Pressure PSI	Flow Rate B/M	Density LB/G	Volume BBL	Message	
06/26/2011	14:00:30	67	5.9	8.36	180.2		
06/26/2011	14:02:10	137	6.2	8.36	190.4		
06/26/2011	14:03:50	150	6.3	8.36	201.0		
06/26/2011	14:05:30	217	6.4	8.36	211.8		
06/26/2011	14:07:10	264	6.4	8.37	222.5		
06/26/2011	14:08:50	345	6.4	8.37	233.2		
06/26/2011	14:10:30	426	6.4	8.37	243.8		
06/26/2011	14:12:10	469	6.4	8.37	254.5		
06/26/2011	14:13:50	438	4.3	8.37	263.4		
06/26/2011	14:15:30	419	2.0	8.37	270.1		
06/26/2011	14:17:10	431	1.9	8.37	273.3		
06/26/2011	14:17:28					Cement to surface at 120bbls away.	
06/26/2011	14:17:28	399	2.0	8.37	273.9		
06/26/2011	14:17:30					Good returns.	
06/26/2011	14:17:30	419	1.9	8.37	274.0		
06/26/2011	14:17:58					Total of 10bbls to surface.	
06/26/2011	14:17:58	438	1.9	8.37	274.9		
06/26/2011	14:18:50	448	1.9	8.37	276.6		
06/26/2011	14:19:40					Bump Top Plug	
06/26/2011	14:19:40	1192	0.0	8.37	277.7		
06/26/2011	14:19:41					End Displacement	
06/26/2011	14:19:41	1192	0.0	8.37	277.7		
06/26/2011	14:19:42					Bumped plug to 1200psi.	
06/26/2011	14:19:42					Final displacement was 130bbls.	
06/26/2011	14:19:42					Hold for 10minutes.	
06/26/2011	14:19:42					Bleed off pressure.	
06/26/2011	14:19:42					Check floats.	
06/26/2011	14:19:42	1190	0.0	8.37	277.7		
06/26/2011	14:19:43					Floats held.	
06/26/2011	14:19:43					Got .75bbls back.	
06/26/2011	14:19:43					10bbls of cement to surface.	
06/26/2011	14:19:43					Good returns for entire job.	
06/26/2011	14:19:43	1190	0.0	8.37	277.7		
06/26/2011	14:20:30	1189	0.0	8.37	277.7		
06/26/2011	14:22:10	1189	0.0	8.37	277.7		
06/26/2011	14:23:50	1190	0.0	8.37	277.7		
06/26/2011	14:25:30	1188	0.0	8.37	277.7		
06/26/2011	14:27:10	1189	0.0	8.37	277.7		
06/26/2011	14:28:50	1189	0.0	8.37	277.7		
06/26/2011	14:30:30	1189	0.0	8.36	277.7		
06/26/2011	14:32:10	1188	0.0	8.36	277.7		
06/26/2011	14:33:50	6	0.0	8.36	277.7		
06/26/2011	14:34:43					End Job	
06/26/2011	14:34:43	7	0.0	8.36	277.7		

Well WF12B-26 H26 596 WF12B-26 H26 596	Field N. PARACHUTE	Job Start Jun/26/2011	Customer ENCANA	Job Number BRWT-00082
---	-----------------------	--------------------------	--------------------	--------------------------

Post Job Summary

Average Pump Rates, bbl/min					Volume of Fluid Injected, bbl			
Slurry 6.0	N2	Mud	Maximum Rate 6.0	Total Slurry 130.0	Mud	Spacer 20.0	N2	
Treating Pressure Summary, psi					Breakdown Fluid			
Maximum 2500	Final 1200	Average 300	Bump Plug to 1200	Breakdown	Type	Volume	Density	
Avg. N2 Percent	Designed Slurry Volume 130.0 bbl		Displacement 131.0 bbl	Mix Water Temp 65 degF	Cement Circulated to Surface? <input checked="" type="checkbox"/>	Volume 10.0 bbl		
					Washed Thru Perfs <input type="checkbox"/>	To		
Customer or Authorized Representative CODY HUSEBY			Schlumberger Supervisor JEFF PATTERSON			Circulation Lost <input type="checkbox"/>	Job Completed <input checked="" type="checkbox"/>	
						-	-	