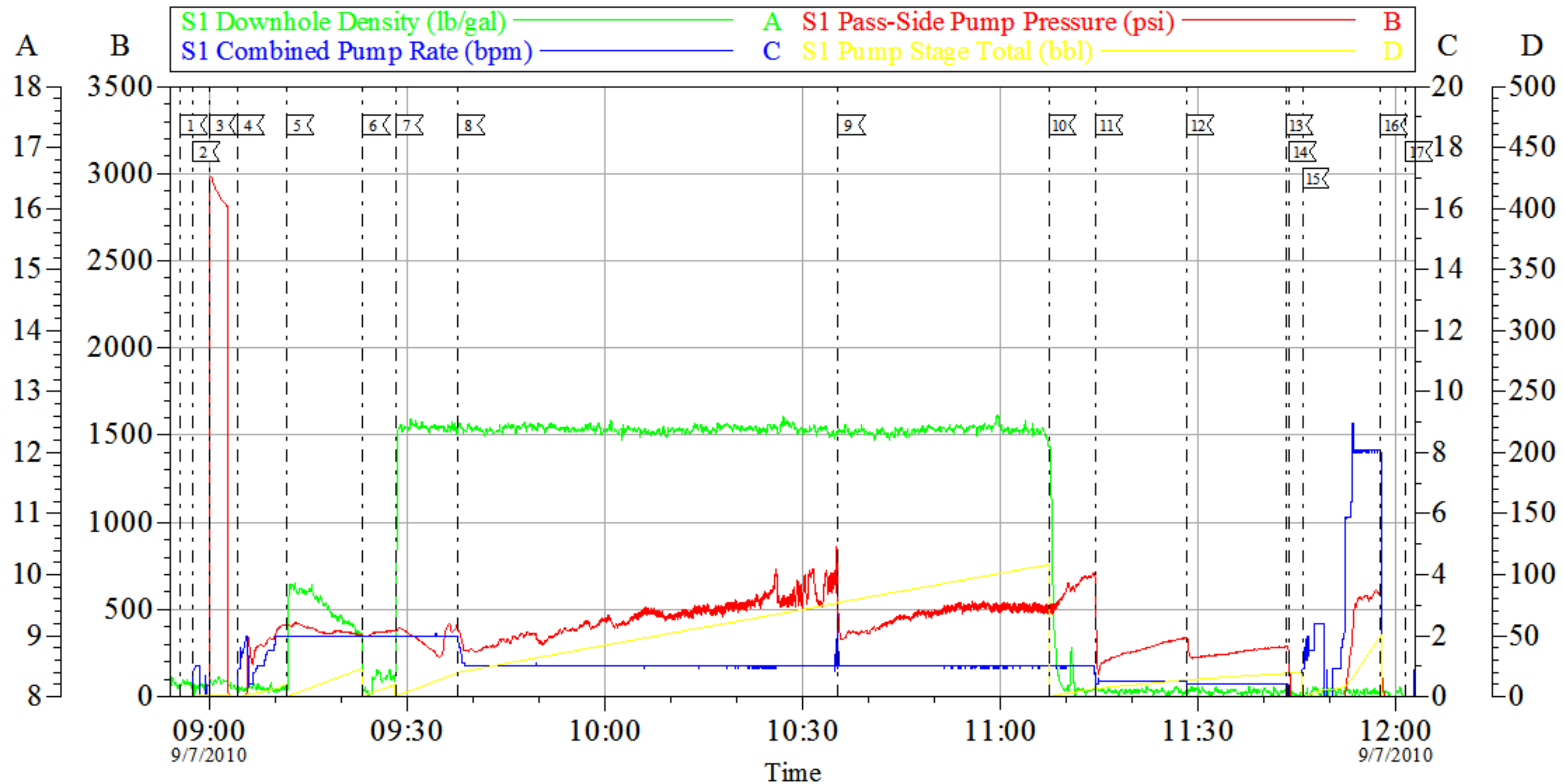


Mesa Energy

Squeeze #5



Local Event Log			
1 START JOB	08:55:34	2 PRIMELINES	08:57:26
3 TEST LINES	08:59:53	4 INJECTION TEST	09:04:13
5 PUMP SUPER FLUSH	09:11:44	6 PUMP WATER SPACER	09:23:13
7 PUMPSQUEEZE CEMENT	09:28:17	8 SLOW RATE	09:37:38
9 RE-PRIME PUMPS	10:35:23	10 PUMP WATER DISPLACEMENT	11:07:20
11 SLOW RATE	11:14:28	12 SLOW RATE	11:28:18
13 SHUTDOWN	11:43:21	14 STING OUT OF RETAINER	11:43:50
15 REVERSED RILL PIPE	11:45:49	16 SHUTDOWN	11:57:39
17 END JOB	12:01:29		

Customer: Mesa Energy
 Well Description: BDU 6607B G11 299
 Company Rep: Ed Daryl

Job Date: 07-Sep-2010
 Job Type: Squeeze #5
 Cement Supervisor: Aaron Hone

Sales Order #: 7619057
 ADC Used: Yes
 Elite #: #6 - Rusty Weaver

OptiCem v6.4.9
 07-Sep-10 12:21