
MESA ENERGY PARTNERS LLC

**BDU 6607B G11 299
WILD CAT
Rio Blanco County , Colorado**

Squeeze Perfs
11-Sep-2010

Post Job Report

The Road to Excellence Starts with Safety

Sold To #: 358666		Ship To #: 2802539		Quote #:		Sales Order #: 7630469		
Customer: MESA ENERGY PARTNERS LLC				Customer Rep: Chaney, Phil				
Well Name: BDU			Well #: BDU 6607B G11 299			API/UWI #: 05-103-11601		
Field: WILD CAT		City (SAP): RANGELY		County/Parish: Rio Blanco		State: Colorado		
Lat: N 39.894 deg. OR N 39 deg. 53 min. 36.938 secs.				Long: W 108.469 deg. OR W -109 deg. 31 min. 50.228 secs.				
Contractor: FRONTIER			Rig/Platform Name/Num: FRONTIER 2					
Job Purpose: Squeeze Perfs								
Well Type: Development Well			Job Type: Squeeze Perfs					
Sales Person: KOHL, KYLE			Srvc Supervisor:		ERIC CARTER		MBU ID Emp #: 345598	

Job Personnel

HES Emp Name	Exp Hrs	Emp #	HES Emp Name	Exp Hrs	Emp #	HES Emp Name	Exp Hrs	Emp #
BLANCHETTE, JAMES George	21	371360	CARTER, ERIC Earl	21	345598	JENSEN, JESSE Robert	21	478774
LUNCEFORD, STEVEN John	21	457512	SALAZAR, PAUL Omar	21	445614	SMITH, CHRISTOPHER Scott	21	452619

Equipment

HES Unit #	Distance-1 way	HES Unit #	Distance-1 way	HES Unit #	Distance-1 way	HES Unit #	Distance-1 way
10296152C	mile	10867425	mile	10897797	mile	10897891	mile
10951251	mile						

Job Hours

Date	On Location Hours	Operating Hours	Date	On Location Hours	Operating Hours	Date	On Location Hours	Operating Hours
9/11/10	21	9						

TOTAL	Total is the sum of each column separately							
--------------	--	--	--	--	--	--	--	--

Job

Formation Name	Top	Bottom	Called Out	Date	Time	Time Zone
Formation Depth (MD)			On Location	11 - Sep - 2010	00:30	CST
Form Type		BHST	Job Started	11 - Sep - 2010	14:11	CST
Job depth MD	952. ft	Job Depth TVD	952. ft	Job Completed	11 - Sep - 2010	22:09
Water Depth		Wk Ht Above Floor		Departed Loc	11 - Sep - 2010	23:00
Perforation Depth (MD)	From	To				

Well Data

Description	New / Used	Max pressure psig	Size in	ID in	Weight lbm/ft	Thread	Grade	Top MD ft	Bottom MD ft	Top TVD ft	Bottom TVD ft
-------------	------------	-------------------	---------	-------	---------------	--------	-------	-----------	--------------	------------	---------------

Sales/Rental/3rd Party (HES)

Description	Qty	Qty uom	Depth	Supplier
R/A DENSOMETER W/CHART RECORDER,/JOB,ZI	1	JOB		
ADC (AUTO DENSITY CTRL) SYS, /JOB,ZI	1	JOB		

Tools and Accessories

Type	Size	Qty	Make	Depth	Type	Size	Qty	Make	Depth	Type	Size	Qty	Make
Guide Shoe					Packer					Top Plug			
Float Shoe					Bridge Plug	9.625	1	HES	994	Bottom Plug			
Float Collar					Retainer					SSR plug set			
Insert Float										Plug Container			
Stage Tool										Centralizers			

Miscellaneous Materials

Gelling Agt	Conc	Surfactant	Conc	Acid Type	Qty	Conc	%
Treatment Fld	Conc	Inhibitor	Conc	Sand Type	Size		Qty

Fluid Data										
Stage/Plug #: 1										
Fluid #	Stage Type	Fluid Name	Qty	Qty uom	Mixing Density lbm/gal	Yield ft ³ /sk	Mix Fluid Gal/sk	Rate bbl/min	Total Mix Fluid Gal/sk	
1	Fresh Water Spacer			bbl	.	.0	.0	.0		
2	Tail Cement	SQUEEZECM (TM) SYSTEM (452971)	45.0	sacks	12.5	2.26	12.9		12.9	
	0.25 lbm	POLY-E-FLAKE (101216940)								
	12.9 Gal	FRESH WATER								
3	Displacement			bbl	.	.0	.0	.0		
4	Fresh Water Spacer			bbl	.	.0	.0	.0		
5	Tail Cement	SQUEEZECM (TM) SYSTEM (452971)	45.0	sacks	12.5	2.26	12.9		12.9	
	0.25 lbm	POLY-E-FLAKE (101216940)								
	12.9 Gal	FRESH WATER								
6	Displacement			bbl	.	.0	.0	.0		
Calculated Values		Pressures		Volumes						
Displacement	17.6	Shut In: Instant		Lost Returns		Cement Slurry	36.2	Pad		
Top Of Cement		5 Min		Cement Returns		Actual Displacement		Treatment		
Frac Gradient		15 Min		Spacers		Load and Breakdown		Total Job		
Rates										
Circulating		Mixing		Displacement		Avg. Job				
Cement Left In Pipe	Amount	0 ft	Reason	Shoe Joint						
Frac Ring # 1 @	ID	Frac ring # 2 @	ID	Frac Ring # 3 @	ID	Frac Ring # 4 @	ID			
The Information Stated Herein Is Correct				Customer Representative Signature						

The Road to Excellence Starts with Safety

Sold To #: 358666	Ship To #: 2802539	Quote #:	Sales Order #: 7630469
Customer: MESA ENERGY PARTNERS LLC		Customer Rep: Chaney, Phil	
Well Name: BDU	Well #: BDU 6607B G11 299	API/UWI #: 05-103-11601	
Field: WILD CAT	City (SAP): RANGELY	County/Parish: Rio Blanco	State: Colorado
Legal Description:			
Lat: N 39.894 deg. OR N 39 deg. 53 min. 36.938 secs.		Long: W 108.469 deg. OR W -109 deg. 31 min. 50.228 secs.	
Contractor: FRONTIER		Rig/Platform Name/Num: FRONTIER 2	
Job Purpose: Squeeze Perfs			Ticket Amount:
Well Type: Development Well		Job Type: Squeeze Perfs	
Sales Person: KOHL, KYLE		Srvc Supervisor: ERIC CARTER	MBU ID Emp #: 345598

Activity Description	Date/Time	Cht #	Rate bbl/min	Volume bbl		Pressure psig		Comments
				Stage	Total	Tubing	Casing	
Call Out	09/10/2010 19:00							
Depart Yard Safety Meeting	09/10/2010 21:20							ATTENDED BY ALL HES CREW
Crew Leave Yard	09/10/2010 21:30							
Arrive At Loc	09/11/2010 00:30							RIG RIH WITH WIRELINE
Assessment Of Location Safety Meeting	09/11/2010 01:00							ATTENDED BY ALL HES CREW
Other	09/11/2010 01:10							SPOT EQUIPMENT
Pre-Rig Up Safety Meeting	09/11/2010 01:20							ATTENDED BY ALL HES CREW
Rig-Up Equipment	09/11/2010 01:30							
Pre-Job Safety Meeting	09/11/2010 13:30							ATTENDED BY ALL HES CREW, RIG CREW AND COMPANY REP.
Start Job	09/11/2010 14:11							CASING 9.625", 36#, J-55, DP 4.5", 16.6#, TOOL SET AT 994'
Test Lines	09/11/2010 14:12							PRESSURED UP TO 3000 PSI, PRESSURE HELD
Test Tool	09/11/2010 14:17						950.0	PRESSURED UP TO 950 PSI, PRESSURE FELL 40 PSI PER MINUTE
Other	09/11/2010 15:00							WIRELINE RIH AND PERFED AT 952', 925'
Reverse Circ Well	09/11/2010 16:07							GOOD RETURNS
Injection Test	09/11/2010 16:19		0.5	5			380.0	FRESH WATER

Activity Description	Date/Time	Cht #	Rate bbl/min	Volume bbl		Pressure psig		Comments
				Stage	Total	Tubing	Casing	
Pump Spacer	09/11/2010 16:24		1.5	5			.0	FRESH WATER
Pump Cement	09/11/2010 16:32		1.5	18.1				45 SKS MIXED AT 12.5 PPG, 2.26 YIELD, 12.9 GL/SK
Pump Displacement	09/11/2010 16:40		1.5					FRESH WATER
Shutdown	09/11/2010 16:48							
Other	09/11/2010 16:52							RIG PULLED 4 STANDS
Reverse Circ Well	09/11/2010 17:06		2	16			80.0	FRESH WATER
Start Squeeze	09/11/2010 17:20		0.5	1			500.0	
Monitor Pressure	09/11/2010 17:23							
Resume Squeeze	09/11/2010 17:27		0.4	0.2			500.0	
Monitor Pressure	09/11/2010 17:28							
Resume Squeeze	09/11/2010 17:33		0.4	0.6			610.0	
Monitor Pressure	09/11/2010 17:36							
Resume Squeeze	09/11/2010 18:00		0.4	1.5			610.0	
Monitor Pressure	09/11/2010 18:01							
Resume Squeeze	09/11/2010 18:34		0.4	0.3			700.0	
Monitor Pressure	09/11/2010 18:34							
Shutdown	09/11/2010 18:39							PRESSURE HELD, SHUTDOWN AT COMPANY REP'S REQUEST
Other	09/11/2010 19:00							RIH WITH WIRELINE AND PERFER AT 752', HOC WAS 805' SO SECOND TOOL WAS NOT RIH.
Test Lines	09/11/2010 19:46							
Injection Test	09/11/2010 19:51		0.5	3			248.0	

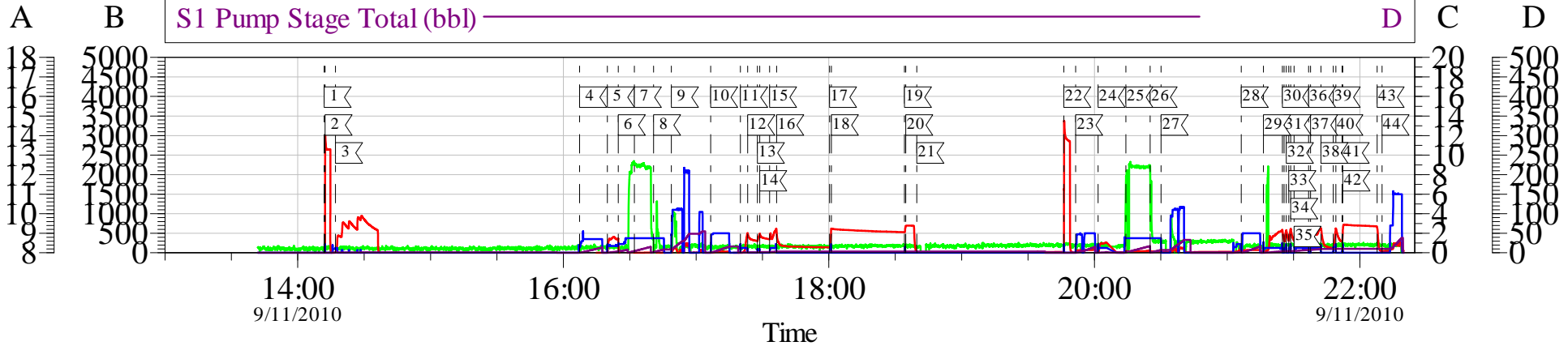
Activity Description	Date/Time	Cht #	Rate bbl/min	Volume bbl		Pressure psig		Comments
				Stage	Total	Tubing	Casing	
Reverse Circ Well	09/11/2010 20:01		2	13			42.0	
Pump Cement	09/11/2010 20:14		1.5	18.1			42.0	45 SKS MIXED AT 12.5 PPG, 2.26 YIELD, 12.9 GL/SK
Pump Displacement	09/11/2010 20:25		1.5	7.4			39.0	FRESH WATER
Shutdown	09/11/2010 20:30							
Other	09/11/2010 20:40							RIG PULLED 4 STANDS
Reverse Circ Well	09/11/2010 21:06							
Start Squeeze	09/11/2010 21:16		0.5	6.5			595.0	
Monitor Pressure	09/11/2010 21:24							
Resume Squeeze	09/11/2010 21:25		0.5	0.5			595.0	
Monitor Pressure	09/11/2010 21:26							
Resume Squeeze	09/11/2010 21:27		0.5	0.5			595.0	
Monitor Pressure	09/11/2010 21:28							
Resume Squeeze	09/11/2010 21:30		0.5	0.2			615.0	
Monitor Pressure	09/11/2010 21:36							
Resume Squeeze	09/11/2010 21:37		0.5	1			612.0	
Monitor Pressure	09/11/2010 21:42							
Resume Squeeze	09/11/2010 21:47		0.5	0.3			615.0	
Monitor Pressure	09/11/2010 21:49							
Resume Squeeze	09/11/2010 21:51		0.5	0.3			703.0	
Monitor Pressure	09/11/2010 21:52							PRESSURE HELD, SHUTDOWN AT COMPANY REP'S REQUEST
Shutdown	09/11/2010 22:07							
End Job	09/11/2010 22:09							

Activity Description	Date/Time	Cht #	Rate bbl/ min	Volume bbl		Pressure psig		Comments
				Stage	Total	Tubing	Casing	
Post-Job Safety Meeting (Pre Rig-Down)	09/11/2010 22:25							ATTENDED BY ALL HES CREW
Rig-Down Equipment	09/11/2010 22:25							
Depart Location Safety Meeting	09/11/2010 22:25							ATTENDED BY ALL HES CREW
Crew Leave Location	09/11/2010 22:25							THANK YOU FOR USING HALLIBURTON CEMENT, ERIC CARTER AND CREW.

MESA ENERGY

BLOCK SQUEEZE

S1 Downhole Density (lb/gal) ————— A
 S1 Pass-Side Pump Pressure (psi) ————— B
 S1 Combined Pump Rate (bpm) ————— C
 S1 Pump Stage Total (bbl) ————— D



Local Event Log

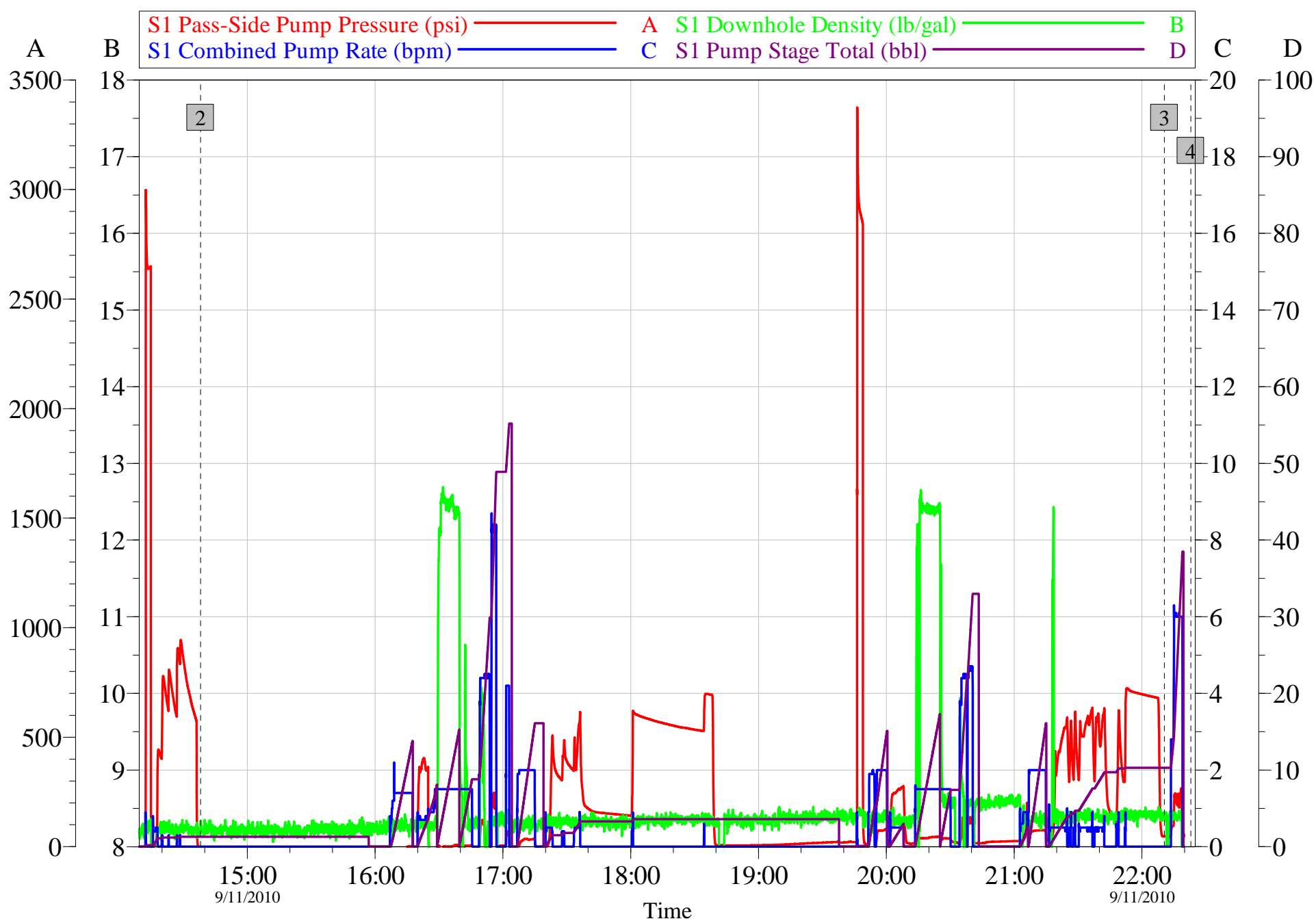
1 START JOB	14:11:53	2 TEST LINES	14:12:18	3 TEST TOOL	14:17:02
4 REVERSE CIRCULATE DP	16:07:21	5 INJECTION TEST	16:19:54	6 PUMP H2O SPACER	16:24:50
7 PUMP CEMENT	16:32:06	8 PUMP H2O DISPLACEMENT	16:40:47	9 SHUTDOWN	16:48:51
10 REVERSE CIRCULATE	17:06:33	11 START SQUEEZE	17:20:03	12 MONITOR PRESSURE	17:23:19
13 RESUME SQUEEZE	17:27:40	14 MONITOR PRESSURE	17:28:46	15 RESUME SQUEEZE	17:33:13
16 MONITOR PRESSURE	17:36:23	17 RESUME SQUEEZE	18:00:19	18 MONITOR PRESSURE	18:01:05
19 RESUME SQUEEZE	18:34:11	20 MONITOR PRESSURE	18:34:43	21 SHUTDOWN	18:39:43
22 TEST LINES	19:46:10	23 INJECTION TEST	19:51:30	24 REVERSE CIRCULATE	20:01:37
25 PUMP CEMENT	20:14:11	26 PUMP DISPLACEMENT	20:25:11	27 SHUTDOWN	20:30:07
28 REVERSE CIRCULATE	21:06:22	29 START SQUEEZE	21:16:24	30 MONITOR PRESSURE	21:24:55
31 RESUME SQUEEZE	21:25:41	32 MONITOR PRESSURE	21:26:44	33 RESUME SQUEEZE	21:27:52
34 MONITOR PRESSURE	21:28:40	35 RESUME SQUEEZE	21:30:15	36 MONITOR PRESSURE	21:36:46
37 RESUME SQUEEZE	21:37:40	38 MONITOR PRESSURE	21:42:23	39 RESUME SQUEEZE	21:47:54
40 MONITOR PRESSURE	21:49:06	41 RESUME SQUEEZE	21:51:56	42 MONITOR PRESSURE	21:52:17
43 SHUTDOWN	22:07:47	44 END JOB	22:09:58		

Customer: MESA ENERGY PARTNERS LLC
 Well Description: BDU BDU 6607B G11 2
 Company Rep: PHIL CHANEY

Job Date: 11-Sep-2010
 Job Type: BLOCK SQUEEZE
 Cement Supervisor: ERIC CARTER

Sales Order #: 7630469
 ADC Used: YES
 Elite #/Operator: 9/PAUL SALAZAR

OptiCem v6.4.0
 11-Sep-10 22:22

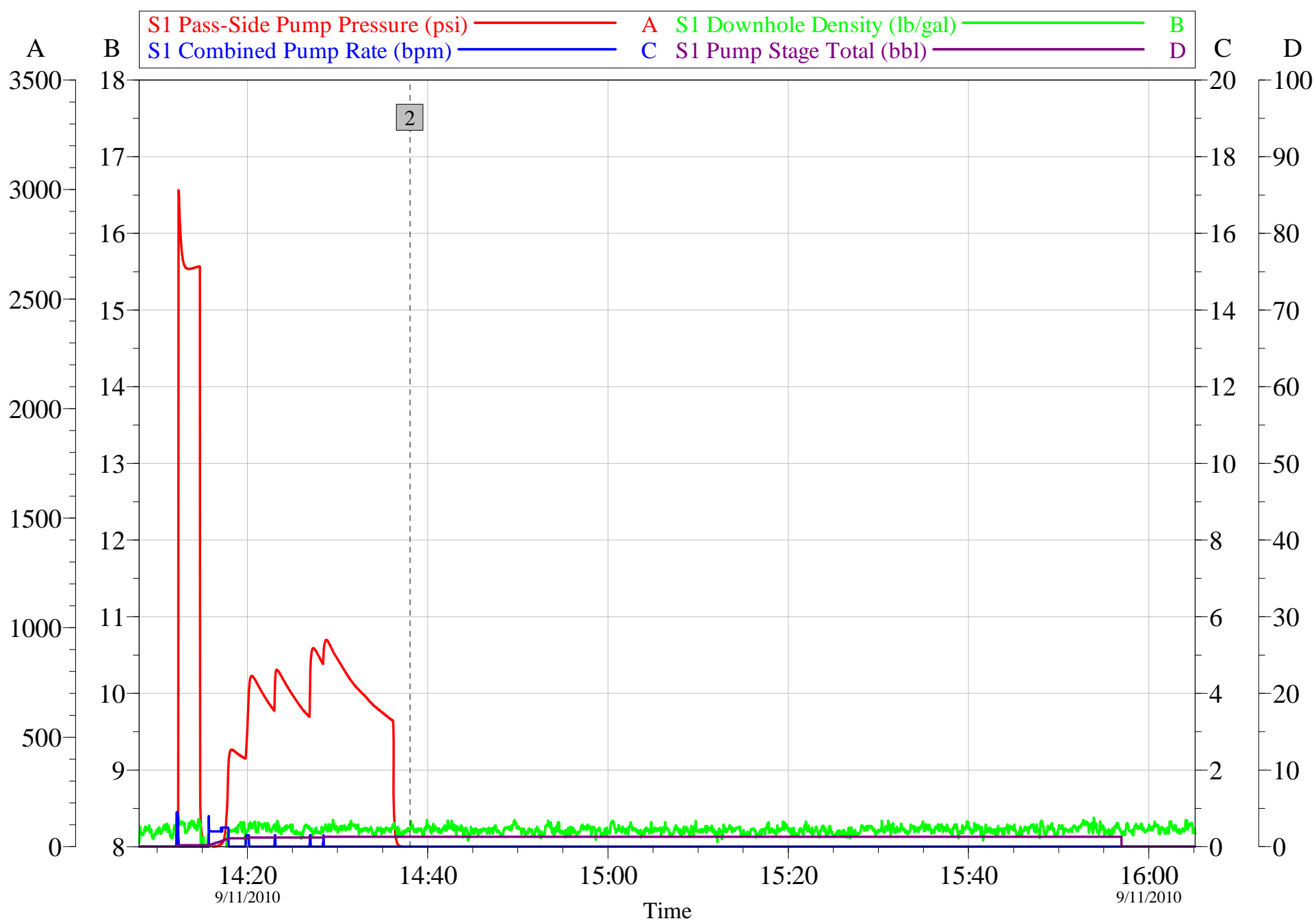


Customer: MESA ENERGY PARTNERS LLC
Well Description: BDU BDU 6607B G11 2
Customer Representative: Phil Chaney

Job Date: 11-Sep-2010
Job Type: Block Squeeze
Cement Supervisor: Eric Carter

Sales Order #: 7630469
ADC Used: YES
Elite#/Operator: 9/Paul Salazar

OptiCem v6.4.6
14-Sep-10 10:42

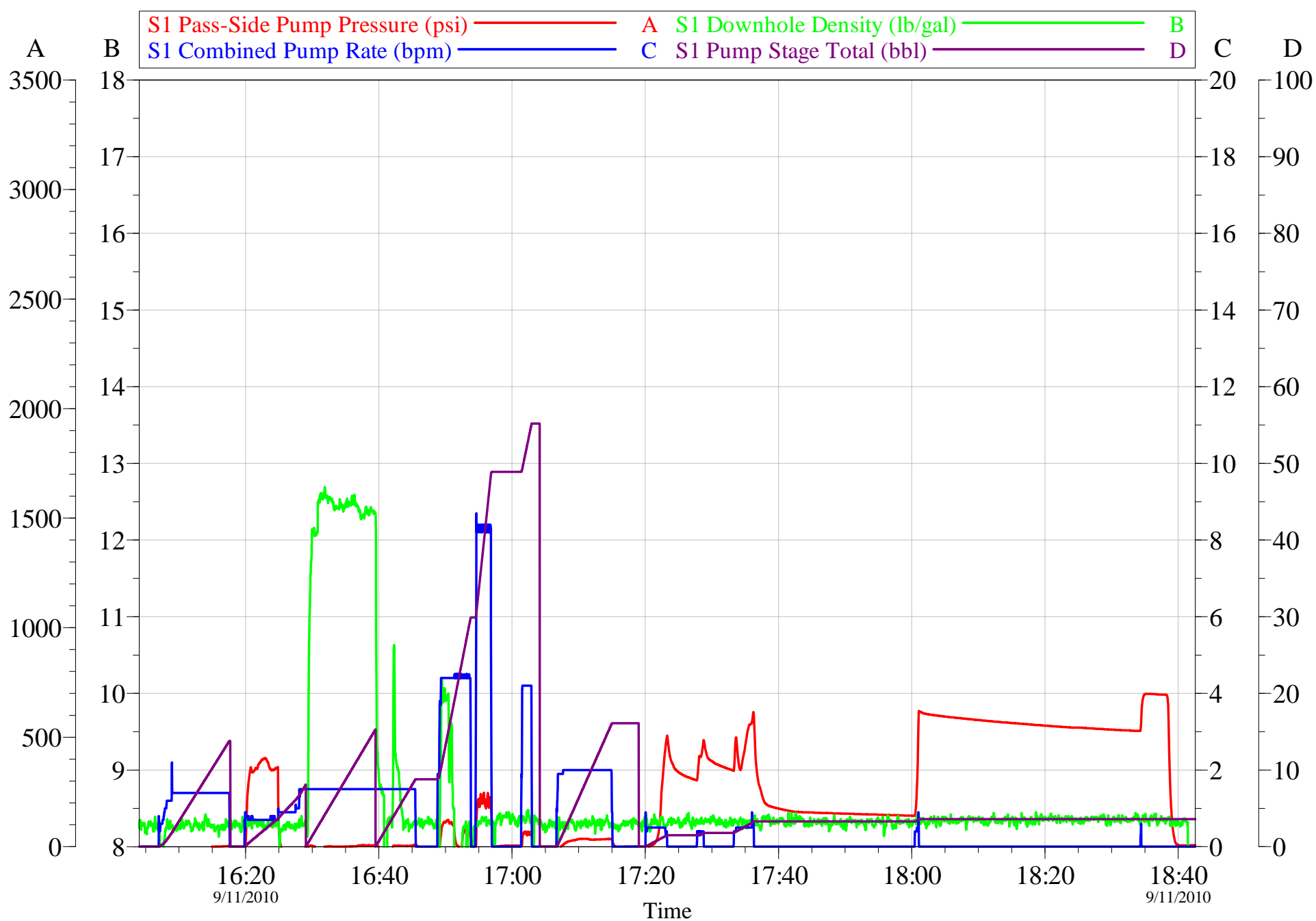


Customer: MESA ENERGY PARTNERS LLC
Well Description: BDU BDU 6607B G11 2
Customer Representative: Phil Chaney

Job Date: 11-Sep-2010
Job Type: Block Squeeze
Cement Supervisor: Eric Carter

Sales Order #: 7630469
ADC Used: YES
Elite#/Operator: 9/Paul Salazar

OptiCem v6.4.6
14-Sep-10 10:43

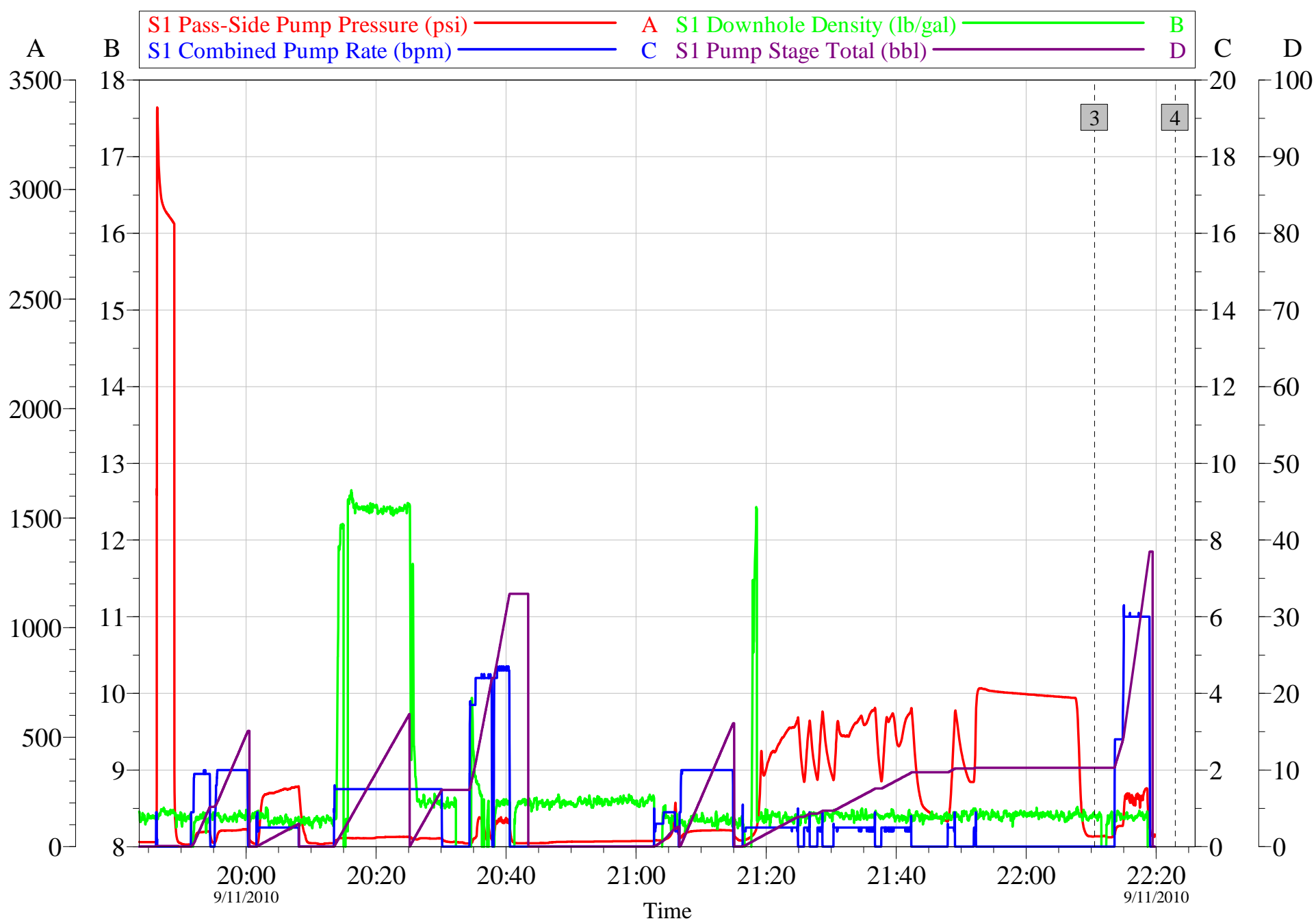


Customer: MESA ENERGY PARTNERS LLC
Well Description: BDU BDU 6607B G11 2
Customer Representative: Phil Chaney

Job Date: 11-Sep-2010
Job Type: Block Squeeze
Cement Supervisor: Eric Carter

Sales Order #: 7630469
ADC Used: YES
Elite#/Operator: 9/Paul Salazar

OptiCem v6.4.6
14-Sep-10 10:43



Customer: MESA ENERGY PARTNERS LLC
 Well Description: BDU BDU 6607B G11 2
 Customer Representative: Phil Chaney

Job Date: 11-Sep-2010
 Job Type: Block Squeeze
 Cement Supervisor: Eric Carter

Sales Order #: 7630469
 ADC Used: YES
 Elite#/Operator: 9/Paul Salazar

OptiCem v6.4.6
 14-Sep-10 10:44