
MESA ENERGY PARTNERS LLC

**BDU 6607B G11 299
WILD CAT
Rio Blanco County , Colorado**

Top Outside Non Production Casing
07-Sep-2010

Post Job Report

The Road to Excellence Starts with Safety

Sold To #: 358666	Ship To #: 2802539	Quote #:	Sales Order #: 7619057
Customer: MESA ENERGY PARTNERS LLC		Customer Rep: DARRELL, ED	
Well Name: BDU	Well #: 6607B G11 299	API/UWI #: 05-103-11601	
Field: WILD CAT	City (SAP): RANGELY	County/Parish: Rio Blanco	State: Colorado
Lat: N 39.894 deg. OR N 39 deg. 53 min. 36.938 secs.	Long: W 108.469 deg. OR W -109 deg. 31 min. 50.228 secs.		
Contractor: Frontier	Rig/Platform Name/Num: Frontier 2		
Job Purpose: Top Outside Non Production Casing			
Well Type: Development Well	Job Type: Top Outside Non Production Casing		
Sales Person: KOHL, KYLE	Srv Supervisor: HONE, AARON	MBU ID Emp #: 381285	

Job Personnel

HES Emp Name	Exp Hrs	Emp #	HES Emp Name	Exp Hrs	Emp #	HES Emp Name	Exp Hrs	Emp #
BEAGLEY, JEFFREY Allen	27	476070	GREGORY, JON D	27	439067	HOEFER, FREEMAN Dennis	27	369666
HONE, AARON D	27	381285	MOGK, JOHN A	3.5	465036	TALAROVICH, JEREMY Jay	27	425449
WEAVER, CARLTON Russell	27	457698	WINKER, STEVEN	27	478776			

Equipment

HES Unit #	Distance-1 way	HES Unit #	Distance-1 way	HES Unit #	Distance-1 way	HES Unit #	Distance-1 way
10722398	180 mile	10744648C	180 mile	10822535	180 mile	10825697	180 mile
10867094	180 mile	10876398	180 mile	10897925	180 mile	10998508	180 mile
11139330	180 mile	11259886	180 mile	11218939	180 mile	10985907	180 mile

Job Hours

Date	On Location Hours	Operating Hours	Date	On Location Hours	Operating Hours	Date	On Location Hours	Operating Hours
9/6/10	11.5	7	9/7/10	15.5	5			

TOTAL Total is the sum of each column separately

Job

Formation Name	Top	Bottom	Called Out	Date	Time	Time Zone
Formation Depth (MD)			On Location	06 - Sep - 2010	06:00	MST
Form Type	BHST		Job Started	06 - Sep - 2010	13:00	MST
Job depth MD	1538. ft	Job Depth TVD	1538. ft	Job Started	06 - Sep - 2010	15:21
Water Depth		Wk Ht Above Floor	2. ft	Job Completed	07 - Sep - 2010	12:01
Perforation Depth (MD)	From	To	Departed Loc	07 - Sep - 2010	15:30	MST

Well Data

Description	New / Used	Max pressure psig	Size in	ID in	Weight lbm/ft	Thread	Grade	Top MD ft	Bottom MD ft	Top TVD ft	Bottom TVD ft
-------------	------------	-------------------	---------	-------	---------------	--------	-------	-----------	--------------	------------	---------------

Sales/Rental/3rd Party (HES)

Description	Qty	Qty uom	Depth	Supplier
R/A DENSOMETER W/CHART RECORDER, /JOB, ZI	1	JOB		
ADC (AUTO DENSITY CTRL) SYS, /JOB, ZI	1	JOB		

Tools and Accessories

Type	Size	Qty	Make	Depth	Type	Size	Qty	Make	Depth	Type	Size	Qty	Make
Guide Shoe					Packer					Top Plug			
Float Shoe					Bridge Plug					Bottom Plug			
Float Collar					Retainer					SSR plug set			
Insert Float										Plug Container			
Stage Tool										Centralizers			

Miscellaneous Materials

Gelling Agt	Conc	Surfactant	Conc	Acid Type	Qty	Conc	%
Treatment Fld	Conc	Inhibitor	Conc	Sand Type	Size	Qty	

Fluid Data										
Stage/Plug #: 1										
Fluid #	Stage Type	Fluid Name	Qty	Qty uom	Mixing Density lbm/gal	Yield ft ³ /sk	Mix Fluid Gal/sk	Rate bbl/min	Total Mix Fluid Gal/sk	
1	Water Spacer		70.00	bbl	8.4	.0	.0	.0		
2	SqueezeCem	SQUEEZECEM (TM) SYSTEM (452971)	125.0	sacks	15.8	1.15	4.96		4.96	
		4.96 Gal FRESH WATER								
3	Displacement		21.8	bbl	8.4	.0	.0	.0		
4	Water Spacer		10.00	bbl	8.4	.0	.0	.0		
5	Super Flush 101	SUPER FLUSH 101 - SBM (12199)	20.00	bbl	10.	.0	.0	.0		
6	Water Spacer		10.00	bbl	8.4	.0	.0	.0		
7	Topout Cement	VARICEM (TM) CEMENT (452009)	300.0	sacks	12.5	1.95	10.88		10.88	
		10.88 Gal FRESH WATER								
8	Displacement		14.8	bbl	8.4	.0	.0	.0		
Calculated Values		Pressures		Volumes						
Displacement		Shut In: Instant		Lost Returns		Cement Slurry		Pad		
Top Of Cement		5 Min		Cement Returns		Actual Displacement		Treatment		
Frac Gradient		15 Min		Spacers		Load and Breakdown		Total Job		
Rates										
Circulating		Mixing		Displacement		Avg. Job				
Cement Left In Pipe	Amount	0 ft	Reason	Shoe Joint						
Frac Ring # 1 @	ID	Frac ring # 2 @	ID	Frac Ring # 3 @	ID	Frac Ring # 4 @	ID			
The Information Stated Herein Is Correct				Customer Representative Signature						

The Road to Excellence Starts with Safety

Sold To #: 358666	Ship To #: 2802539	Quote #:	Sales Order #: 7619057
Customer: MESA ENERGY PARTNERS LLC		Customer Rep: DARRELL, ED	
Well Name: BDU		Well #: 6607B G11 299	API/UWI #: 05-103-11601
Field: WILD CAT	City (SAP): RANGELY	County/Parish: Rio Blanco	State: Colorado
Legal Description:			
Lat: N 39.894 deg. OR N 39 deg. 53 min. 36.938 secs.		Long: W 108.469 deg. OR W -109 deg. 31 min. 50.228 secs.	
Contractor: Frontier		Rig/Platform Name/Num: Frontier 2	
Job Purpose: Top Outside Non Production Casing			Ticket Amount:
Well Type: Development Well		Job Type: Top Outside Non Production Casing	
Sales Person: KOHL, KYLE		Srvc Supervisor: HONE, AARON	MBU ID Emp #: 381285

Activity Description	Date/Time	Cht #	Rate bbl/min	Volume bbl		Pressure psig		Comments
				Stage	Total	Tubing	Casing	
Call Out	09/06/2010 06:00							
Pre-Convoy Safety Meeting	09/06/2010 08:50							
Crew Leave Yard	09/06/2010 09:00							
Arrive At Loc	09/06/2010 13:00							
Assessment Of Location Safety Meeting	09/06/2010 13:10							
Pre-Rig Up Safety Meeting	09/06/2010 13:20							
Rig-Up Equipment	09/06/2010 13:30							
Pre-Job Safety Meeting	09/06/2010 15:00							
Start Job	09/06/2010 15:21							4 1/2" 16.6# DP SET AT 1538' INSIDE 9 5/8" 36# CASING. 12 PERFS AT 1490' TO 1492' HOLE- 12 1/4" WELL FLUID- 8.4#
Prime Pumps	09/06/2010 15:22		1	1			.0	PRIMED LINES TO FLOOR WITH FRESH WATER.
Test Lines	09/06/2010 15:24							3555 PSI.
Pump Spacer	09/06/2010 15:29		4	20			156.0	FRESH WATER
Shutdown	09/06/2010 15:36							CLOSED BLADDER AND KILL LINE.

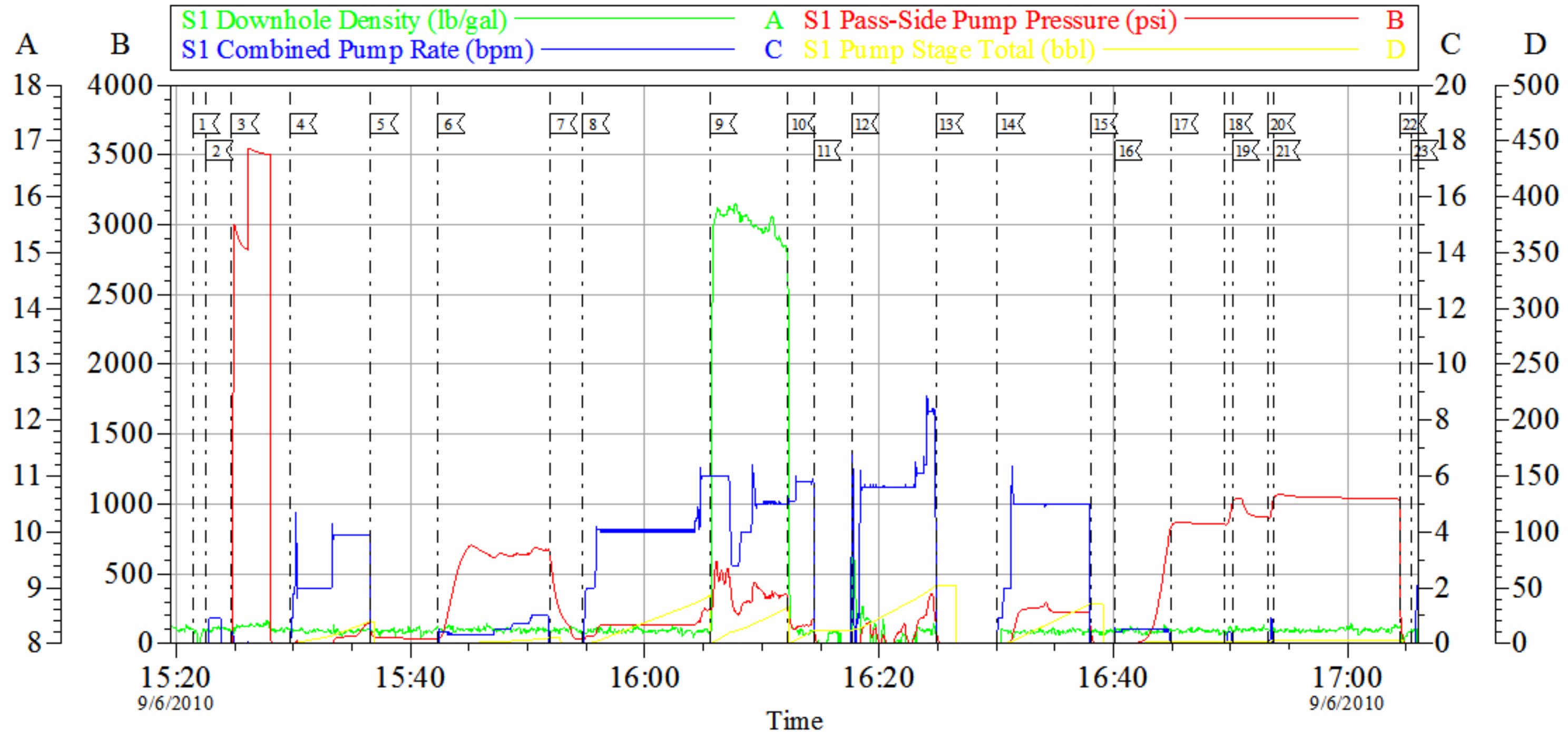
Activity Description	Date/Time	Cht #	Rate bbl/min	Volume bbl		Pressure psig		Comments
				Stage	Total	Tubing	Casing	
Injection Test	09/06/2010 15:42		1	5			645.0	FRESH WATER. STARTED AT .3 BPM PRESSURE BROKE BACK AT 718 PSI. INCREASED RATE IN SLOW INCRIMENTS TO 1 BPM PRESSURE LINED OUT AT 645 PSI.
Shutdown	09/06/2010 15:51							OPENED BLADDER.
Pump Spacer	09/06/2010 15:54		6	40			260.0	FRESH WATER
Pump Cement	09/06/2010 16:05		5	25.6			469.0	SQUEEZECM-125 SKS, 15.8 PPG, 1.15 FT3/SK, 4.96 GAL/SK
Pump Displacement	09/06/2010 16:12		6	12			193.0	SHUT DOWN EARLY.
Shutdown	09/06/2010 16:14							WELL ON VERY SLIGHT SUCK.
Clean Lines	09/06/2010 16:17							FRESH WATER. RIG PULLED 4 STANDS AT 2 MIN. PER STAND
Shutdown	09/06/2010 16:24							
Reverse Circ Well	09/06/2010 16:30		5	35			280.0	FRESH WATER. CIRCULATED ABOUT 2.5 BBLS CEMENT TO PIT.
Shutdown	09/06/2010 16:38							CLOSED BLADDER AND KILL LINE.
Start Squeeze	09/06/2010 16:40		0.5	0			880.0	
Event	09/06/2010 16:44			2.1			880.0	HESITATE
Resume Squeeze	09/06/2010 16:49		0.5	2.1			870.0	
Event	09/06/2010 16:50			0.2			1045.0	HESITATE
Resume Squeeze	09/06/2010 16:53		0.5	2.3			1055.0	
Event	09/06/2010 16:53			0.1			1085.0	HESITATE
Shut In Well	09/06/2010 17:04			2.4			1054.0	CLOSED 2" VALVE ON FLOOR. HELD PRESSURE FOR TWO HOURS.

Activity Description	Date/Time	Cht #	Rate bbl/min	Volume bbl		Pressure psig		Comments
				Stage	Total	Tubing	Casing	
End Job	09/06/2010 17:05							FINISHED WASHING PUMP.
Event	09/06/2010 19:05							RELEASED PRESSURE OFF WELL. RIG PULLED DRILL PIPE AND SET FOR WIRELINE TO PERF CASING.
Pre-Job Safety Meeting	09/06/2010 22:20							
Start Job	09/06/2010 22:40							
Injection Test	09/06/2010 23:11		1	2			550.0	WELL PRESSURED UP.
Shutdown	09/06/2010 23:13							WELL WAS PERFED AT 1060' CUSTOMER HAD SET RETAINER AT 1134' BELOW PERFS.
Injection Test	09/06/2010 23:27		2	20			340.0	LEFT DRILL PIPE STUNG INTO RETAINER AND PUMPED DOWN KILL LINE ON BACKSIDE TO SEE IF WE COULD GET CIRCULATION THROUGH BRAIDEN HEAD. WHILE CIRCULATING PRESSURE ROSE TO 750 PSI. THEN BROKE BACK.
Shutdown	09/06/2010 23:39							PRESSURE LINED OUT AT ABOUT 340 PSI. AT 2 BPM.
End Job	09/06/2010 23:52							
Event	09/07/2010 00:00							SUPERFLUSH & BULK TRUCK ARRIVED ON LOCATION.
Pre-Job Safety Meeting	09/07/2010 08:00							
Start Job	09/07/2010 08:55							SECOND RETAINER ARRIVED. SET AT 1041'

Activity Description	Date/Time	Cht #	Rate bbl/min	Volume bbl		Pressure psig		Comments
				Stage	Total	Tubing	Casing	
Prime Pumps	09/07/2010 08:57		1	1			20.0	PRIME LINES
Test Lines	09/07/2010 08:59							2980 PSI.
Injection Test	09/07/2010 09:04		2	10			425.0	FRESH WATER
Pump Spacer	09/07/2010 09:11		2	20			405.0	SUPERFLUSH
Pump Spacer	09/07/2010 09:23		2	10			382.0	FRESH WATER. SUPERFLUSH TRUCK LEFT LOCATION AT 10:00.
Pump Cement	09/07/2010 09:28		2	104.2			417.0	300 SKS, 12.5 PPG, 1.95 FT3/SK, 10.88 GAL/SK
Slow Rate	09/07/2010 09:37		1	20			276.0	CEMENT REACHED PERFS 16.3 BBL GONE. PRESSURE SLOWLY STARTED TO RISE.
Prime Pumps	09/07/2010 10:35		3	76			870.0	PUMP CAVITATING AND MIX RATE FASTER THAN FLUID GOING DOWN HOLE. BROUGHT RATE UP TO CLEAR PUMPS AND LINES.
Pump Displacement	09/07/2010 11:07		1	5			704.0	
Slow Rate	09/07/2010 11:14		0.5	7			154.0	
Slow Rate	09/07/2010 11:28		0.4	10			316.0	
Shutdown	09/07/2010 11:43			14.5			280.0	
Event	09/07/2010 11:43							RIG STUNG OUT OF RETAINER.
Reverse Circ Well	09/07/2010 11:45		8	50			600.0	1.8 BBLS CEMENT BACK.
Shutdown	09/07/2010 11:57							
End Job	09/07/2010 12:01							NO RETURNS.
Event	09/07/2010 12:02							WAITING ON CUSTOMER TO RELEASE CREW.

Activity Description	Date/Time	Cht #	Rate bbl/ min	Volume bbl		Pressure psig		Comments
				Stage	Total	Tubing	Casing	
Rig-Down Equipment	09/07/2010 14:00							CREW RELEASED.
Pre-Convoy Safety Meeting	09/07/2010 15:20							
Crew Leave Location	09/07/2010 15:30							THANK YOU FOR USING HALLIBURTON.

Mesa Plug Squeeze



Local Event Log					
1	START JOB	15:21:23	2	PRIME LINES	15:22:32
3	TEST LINES	15:24:43	4	PUMP SPACER	15:29:42
5	SHUTDOWN	15:36:35	6	INJECTION TEST	15:42:18
7	SHUTDOWN	15:51:56	8	PUMP WATER SPACER	15:54:42
9	PUMP CEMENT	16:05:32	10	PUMP WATER DISPLACEMENT	16:12:13
11	SHUTDOWN	16:14:27	12	WASH LINES/PULL STANDS	16:17:38
13	SHUTDOWN	16:24:53	14	REVERSE DRILL PIPE	16:30:06
15	SHUTDOWN	16:38:04	16	SQUEEZE ON CEMENT	16:40:09
17	HESITATE	16:44:56	18	SQUEEZE ON CEMENT	16:49:32
19	HESITATE	16:50:09	20	SQUEEZE ON CEMENT	16:53:12
21	HESITATE	16:53:38	22	SHUT IN DRILL PIPE	17:04:25
23	END JOB	17:05:25			

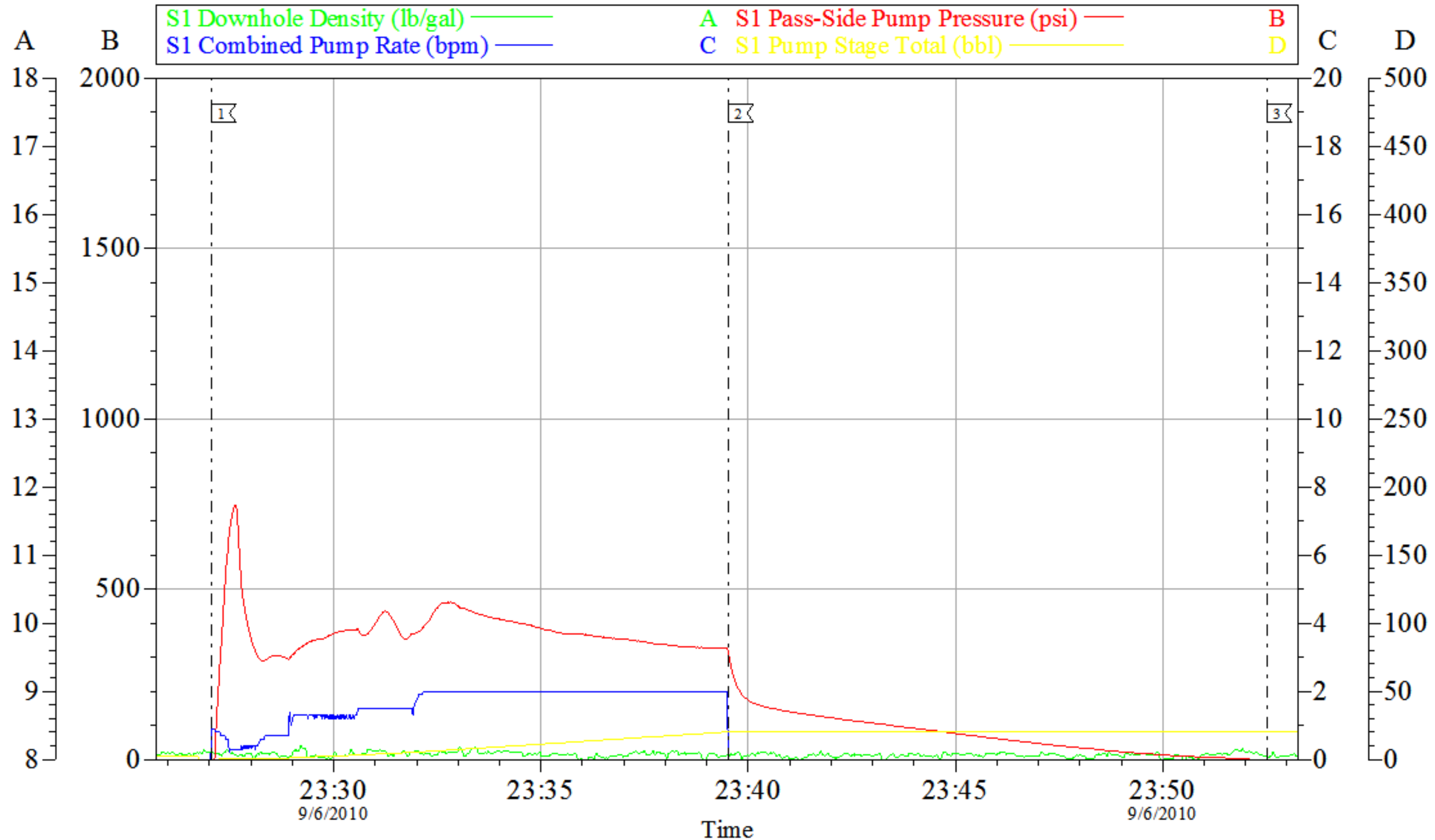
Customer: Mesa Energy
Well Description: BDU 6607B G11 299
Company Rep: Ed Daryl

Job Date: 06-Sep-2010
Job Type: Plug Squeeze
Cement Supervisor: Aaron Hone

Sales Order #: 7619057
ADC Used: Yes
Elite #: #6 - Rusty Weaver

OptiCem v6.4.9
06-Sep-10 17:50

Mesa Energy Injection Test



Local Event Log

1 PUMP INJECTION TEST 23:27:03 2 SHUTDOWN 23:39:32 3 END JOB 23:52:31

Customer: Mesa Energy
Well Description: BDU 6607B G11 299
Company Rep: Ed Daryl

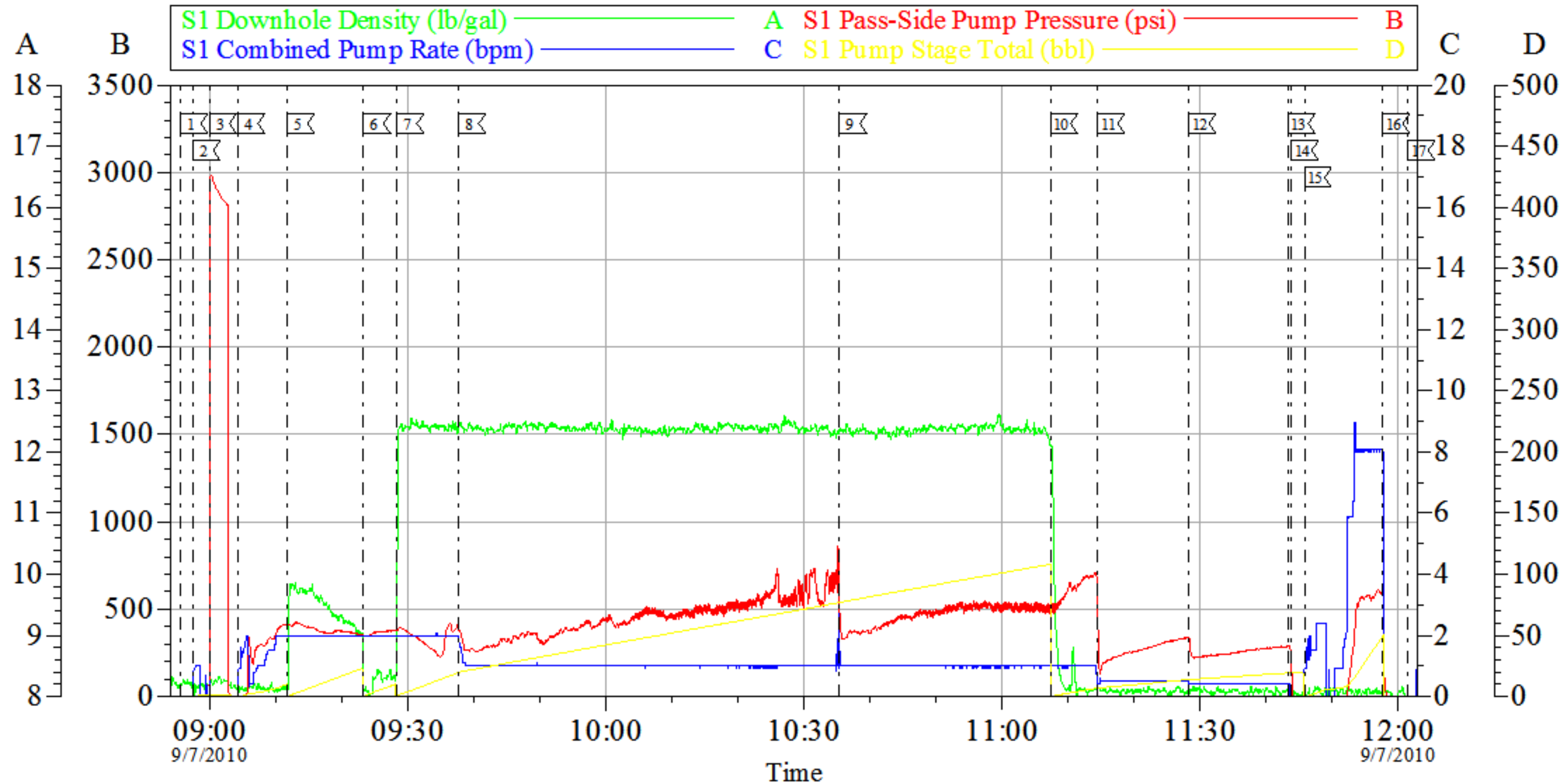
Job Date: 06-Sep-2010
Job Type: Squeeze
Cement Supervisor: Aaron Hone

Sales Order #: 7619057
ADC Used: No
Elite #: #6 - Rusty Weaver

OptiCem v6.4.9
07-Sep-10 01:18

Mesa Energy

Squeeze #5



Local Event Log			
1 START JOB	08:55:34	2 PRIMELINES	08:57:26
3 TEST LINES	08:59:53	4 INJECTION TEST	09:04:13
5 PUMP SUPER FLUSH	09:11:44	6 PUMP WATER SPACER	09:23:13
7 PUMPSQUEEZE CEMENT	09:28:17	8 SLOW RATE	09:37:38
9 RE-PRIME PUMPS	10:35:23	10 PUMP WATER DISPLACEMENT	11:07:20
11 SLOW RATE	11:14:28	12 SLOW RATE	11:28:18
13 SHUTDOWN	11:43:21	14 STING OUT OF RETAINER	11:43:50
15 REVERSED RILL PIPE	11:45:49	16 SHUTDOWN	11:57:39
17 END JOB	12:01:29		

Customer: Mesa Energy
Well Description: BDU 6607B G11 299
Company Rep: Ed Daryl

Job Date: 07-Sep-2010
Job Type: Squeeze #5
Cement Supervisor: Aaron Hone

Sales Order #: 7619057
ADC Used: Yes
Elite #: #6 - Rusty Weaver

OptiCem v6.4.9
07-Sep-10 12:21