



Encana Oil & Gas (USA) Inc. tel: 720-876-5339
370 – 17th Street
Suite 1700 fax: 720-876-6339
Denver, CO 80202
www.encana.com

January 10, 2012

VIA ELECTRONIC MAIL:

Rick Hutton
DOE Office of Legacy Management
2597 B ¾ Road
Grand Junction, CO 80515

RE: DOE Notification for COGCC Application for Permit to Drill PH-21 Pad

Dear Mr. Hutton

The following wells located in Section 21, T7S, R95W have BHL's that lie within the three mile radius of the Project Rulison Well:

Federal 21-8 (PH-21)
Federal 21-8C (PH-21)
Federal 21-1 (PH-21)
Federal 21-1C (PH-21)
Federal 21-2B (PH-21)
Federal 21-9A (PH-21)
Federal 22-11B (PH-21)
Federal 22-12A (PH-21)
Federal 22-12D (PH-21)
Federal 22-14 (PH-21)

Please find Well Location Certificates for each well attached showing the wells BHL.

If you have any questions or need additional information, please contact me at (720) 876-5339.

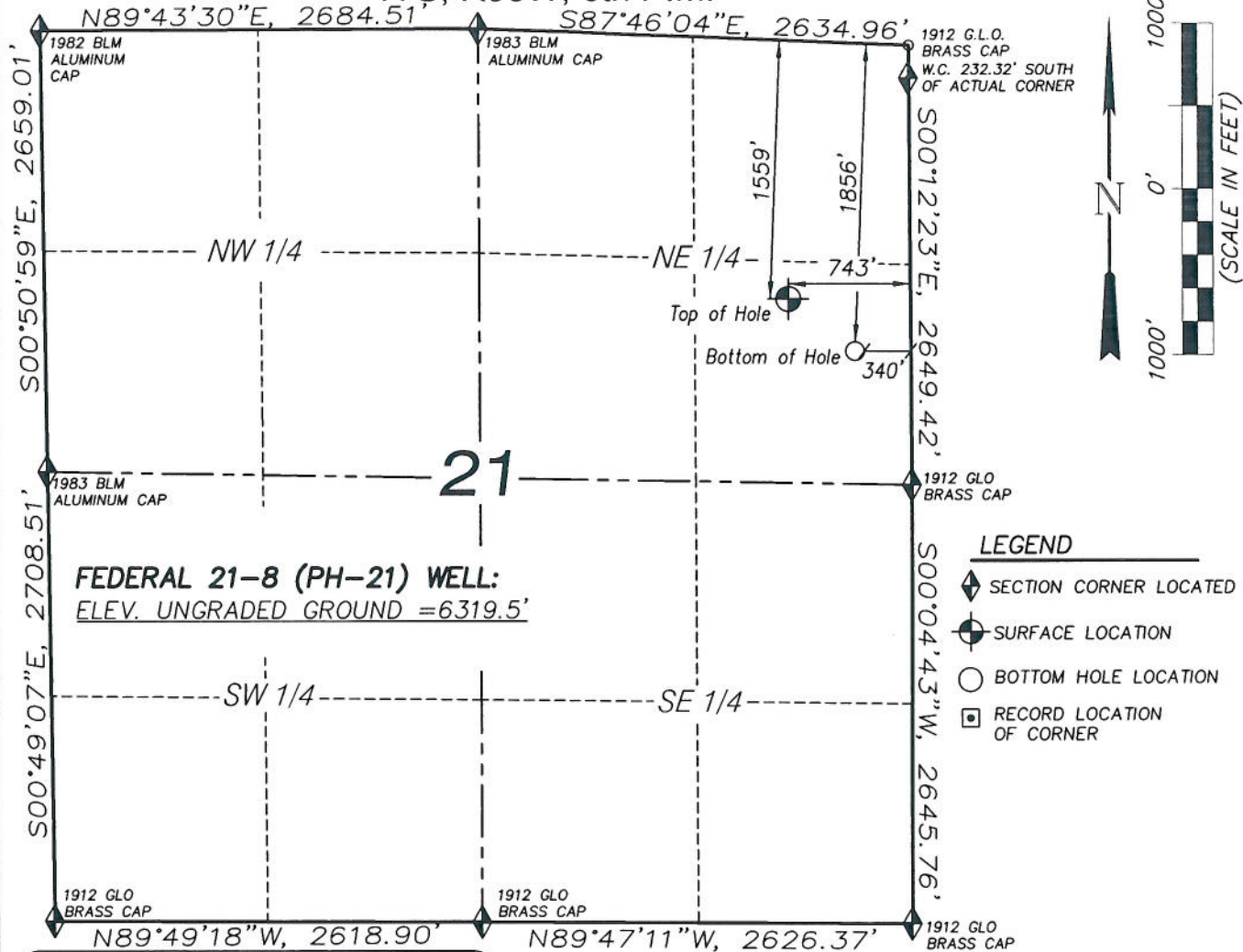
Sincerely,
Encana Oil & Gas (USA) Inc.

A handwritten signature in black ink, appearing to read "Jevin Croteau".

Jevin Croteau
Regulatory Analyst

Attachment

T7S, R95W, 6th P.M.



FEDERAL 21-8 (PH-21) WELL
(WELLHEAD LOCATION) NAD 83
LATITUDE = 39.426107° N
LONGITUDE = 107.995360° W
(BOTTOM HOLE LOCATION) NAD 83
LATITUDE = 39.425251° N
LONGITUDE = 107.993928° W

CERTIFICATE OF SURVEYOR

I, TED TAGGART OF FRUITA, COLORADO HEREBY CERTIFY THAT THIS MAP WAS MADE FROM NOTES TAKEN DURING AN ACTUAL SURVEY MADE BY ME OR UNDER MY DIRECTION FOR ENCANA OIL & GAS (USA) INC. AND THAT THIS LOCATION HAS BEEN STAKED ON THE GROUND AS SHOWN HEREON.



906 Main Street
Evanston, Wyoming 82930
Phone No. (307) 789-4545

MAP to ACCOMPANY
APPLICATION for PERMIT to DRILL
Encana Oil & Gas (USA) Inc.
Federal 21-8 (PH-21) Well

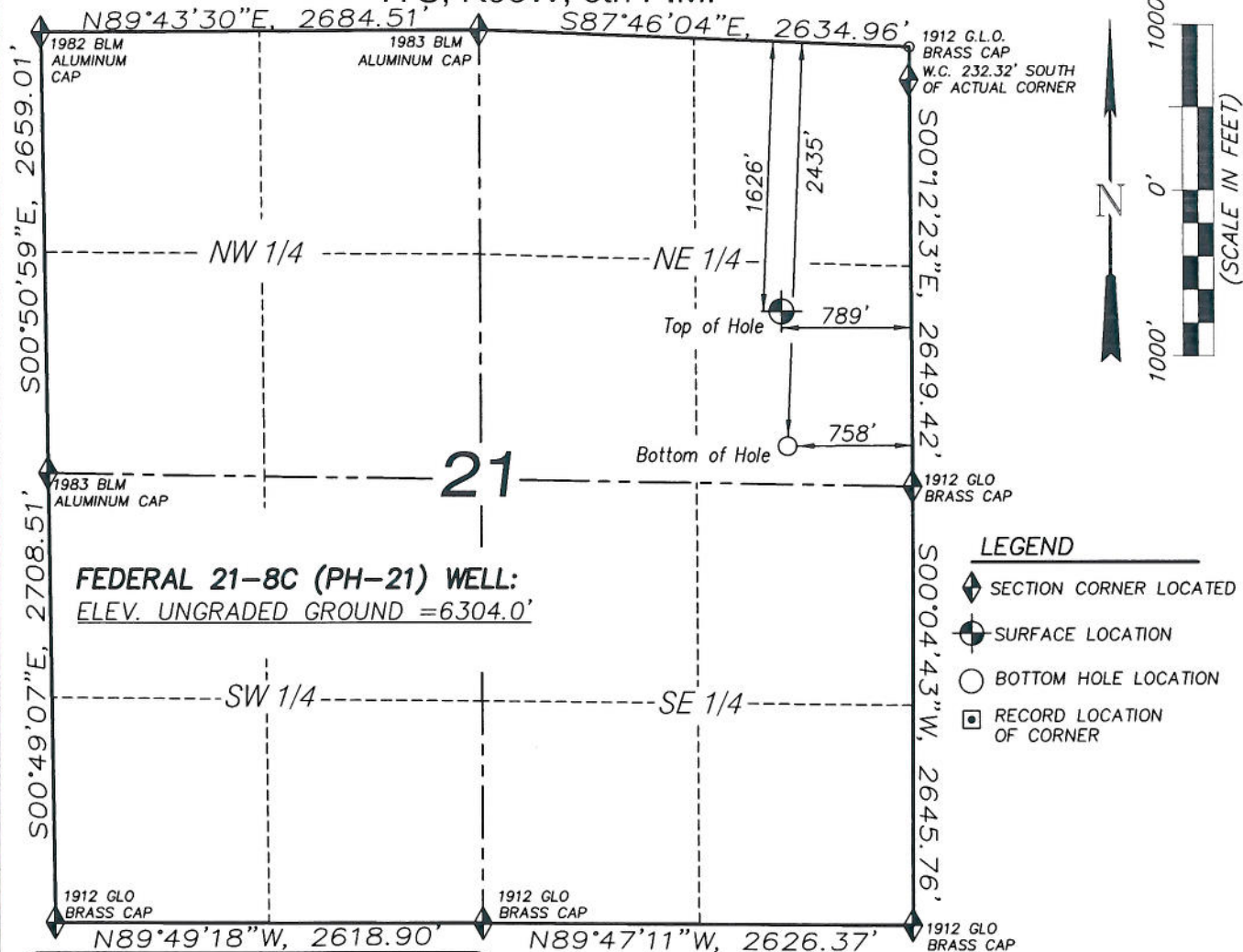
SE1/4 NE1/4, SECTION 21

T7S, R95W, 6th P.M.

GARFIELD COUNTY, COLORADO

Location Plat		Scale: 1" = 1000'	SHEET 1f OF 10
Project No.	05-04-36	Date Surveyed: 6/29/05	
Date	1/12/11	Latest Revision	
Drawn:		Date: 9/22/11	

T7S, R95W, 6th P.M.



FEDERAL 21-8C (PH-21) WELL:
ELEV. UNGRADED GROUND = 6304.0'

FEDERAL 21-8C (PH-21) WELL
(WELLHEAD LOCATION) NAD 83
LATITUDE = 39.425927° N
LONGITUDE = 107.995522° W
(BOTTOM HOLE LOCATION) NAD 83
LATITUDE = 39.423701° N
LONGITUDE = 107.995393° W

CERTIFICATE OF SURVEYOR

I, TED TAGGART OF FRUITA, COLORADO HEREBY CERTIFY THAT THIS MAP WAS MADE FROM NOTES TAKEN DURING AN ACTUAL SURVEY MADE BY ME OR UNDER MY DIRECTION FOR ENCANA OIL & GAS (USA) INC. AND THAT THIS LOCATION HAS BEEN STAKED ON THE GROUND AS SHOWN HEREON.



906 Main Street
Evanston, Wyoming 82930
Phone No. (307) 789-4545

NOTES

1. WELL FOOTAGES ARE MEASURED AT RIGHT ANGLES TO SECTION LINES.
2. BASIS OF BEARING: GEODETIC- BASED ON GPS OBSERVATIONS.
3. ELEVATIONS BASED ON GPS OBSERVATIONS, NAVD 88 (GEOID 03), POST PROCESSED USING NGS OPUS.
4. THE BOTTOM HOLE BEARS S02°23'00"E, 812' FROM TOP OF HOLE.
5. SEE ADDENDUM TO LEGAL PLAT (SHEET 1K) FOR VISIBLE IMPROVEMENTS WITHIN 400 FEET OF THE PROPOSED OIL & GAS LOCATION.
6. CONTROL FOR SURVEY WAS ESTABLISHED USING DIFFERENTIALLY CORRECTED GPS FROM AN OPUS BASED CONTROL NETWORK. WELL LOCATION WAS ESTABLISHED USING NON-GPS CONVENTIONAL METHODS, THEREFORE NO PDOP READING WAS TAKEN.

MAP to ACCOMPANY
APPLICATION for PERMIT to DRILL
Encana Oil & Gas (USA) Inc.
Federal 21-8C (PH-21) Well

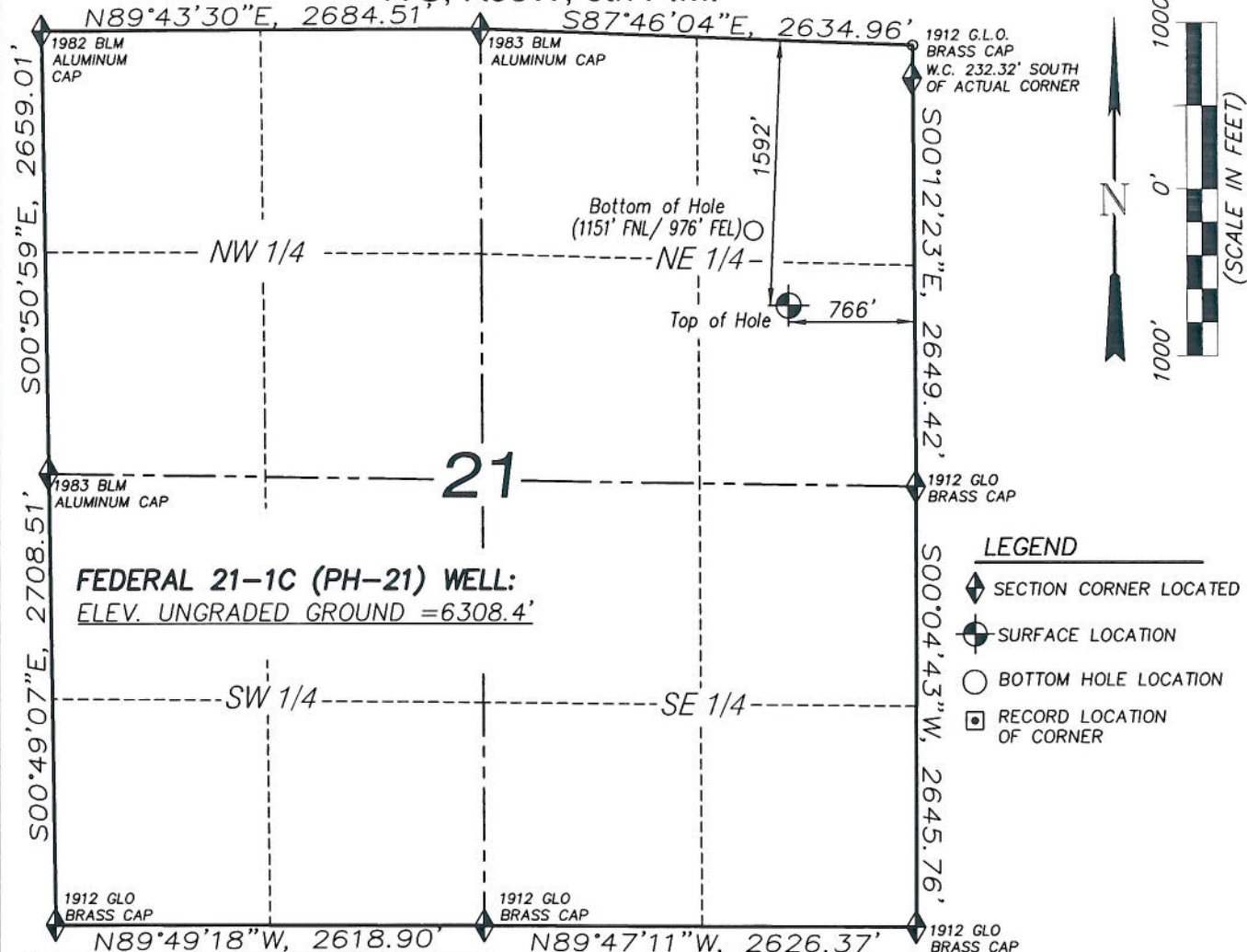
SE1/4 NE1/4, SECTION 21

T7S, R95W, 6th P.M.

GARFIELD COUNTY, COLORADO

Location Plat		Scale: 1" = 1000'		SHEET 1j OF 10
Project No.	05-04-36	Date Surveyed:	6/29/05	
Date Drawn:	1/12/11	Latest Revision Date:	9/22/11	

T7S, R95W, 6th P.M.



FEDERAL 21-1C (PH-21) WELL:
ELEV. UNGRADED GROUND = 6308.4'

LEGEND

- ◆ SECTION CORNER LOCATED
- ⊕ SURFACE LOCATION
- BOTTOM HOLE LOCATION
- RECORD LOCATION OF CORNER

NOTES

1. WELL FOOTAGES ARE MEASURED AT RIGHT ANGLES TO SECTION LINES.
2. BASIS OF BEARING: GEODETIC- BASED ON GPS OBSERVATIONS.
3. ELEVATIONS BASED ON GPS OBSERVATIONS, NAVD 88 (GEOID 03), POST PROCESSED USING NGS OPUS.
4. THE BOTTOM HOLE BEARS N25°13'40"W, 497' FROM TOP OF HOLE.
5. SEE ADDENDUM TO LEGAL PLAT (SHEET 1K) FOR VISIBLE IMPROVEMENTS WITHIN 400 FEET OF THE PROPOSED OIL & GAS LOCATION.
6. CONTROL FOR SURVEY WAS ESTABLISHED USING DIFFERENTIALLY CORRECTED GPS FROM AN OPUS BASED CONTROL NETWORK. WELL LOCATION WAS ESTABLISHED USING NON-GPS CONVENTIONAL METHODS, THEREFORE NO PDOP READING WAS TAKEN.

FEDERAL 21-1C (PH-21) WELL
(WELLHEAD LOCATION) NAD 83
LATITUDE = 39.426017° N
LONGITUDE = 107.995441° W
(BOTTOM HOLE LOCATION) NAD 83
LATITUDE = 39.427250° N
LONGITUDE = 107.996196° W

CERTIFICATE OF SURVEYOR

I, TED TAGGART OF FRUITA, COLORADO HEREBY CERTIFY THAT THIS MAP WAS MADE FROM NOTES TAKEN DURING AN ACTUAL SURVEY MADE BY ME OR UNDER MY DIRECTION FOR ENCANA OIL & GAS (USA) INC. AND THAT THIS LOCATION HAS BEEN STAKED ON THE GROUND AS SHOWN HEREON.



MAP to ACCOMPANY
APPLICATION for PERMIT to DRILL
Encana Oil & Gas (USA) Inc.
Federal 21-1C (PH-21) Well

SE1/4 NE1/4, SECTION 21

T7S, R95W, 6th P.M.

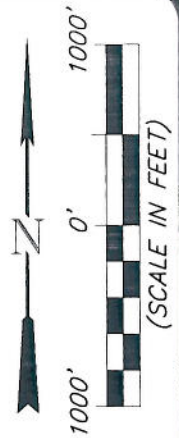
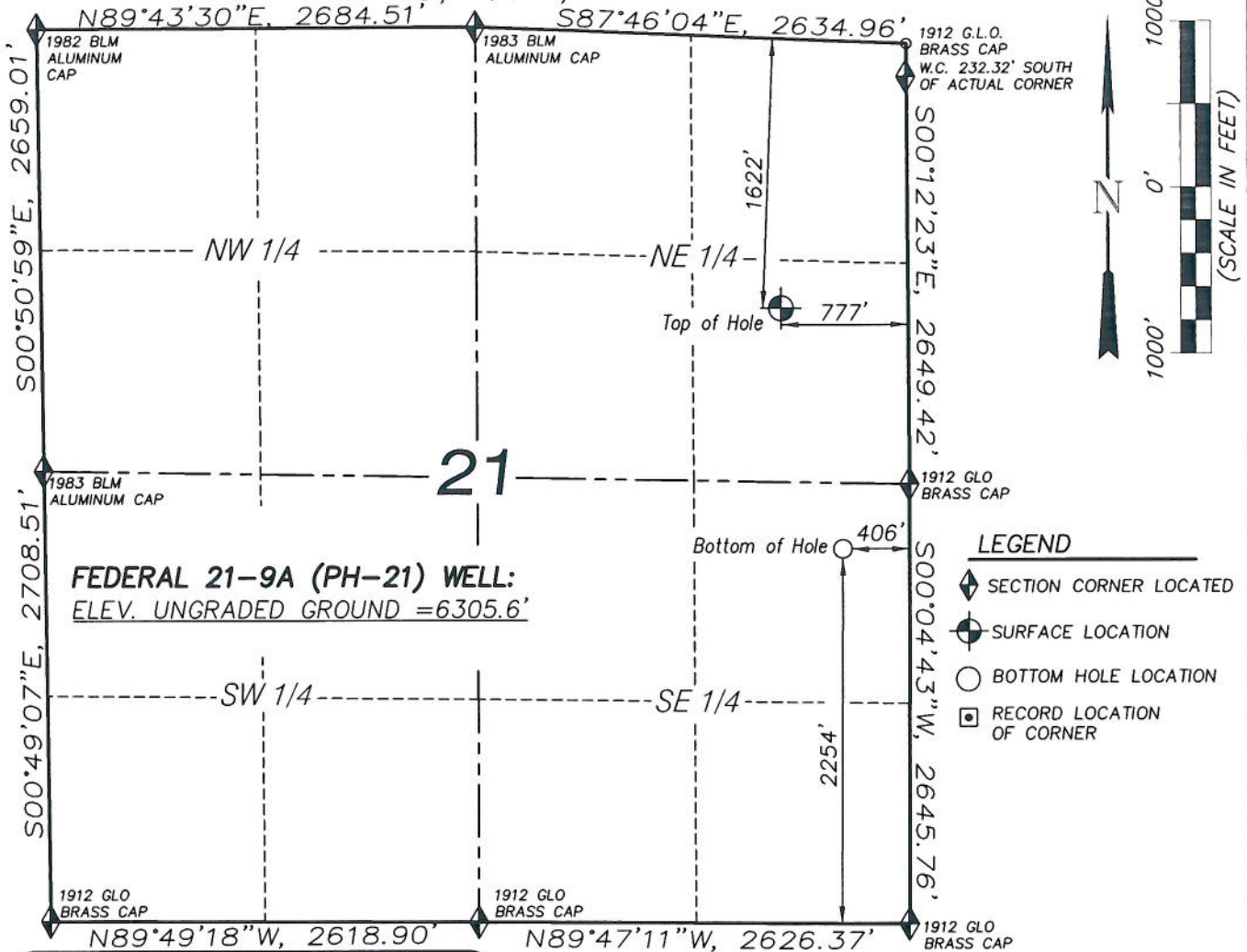
GARFIELD COUNTY, COLORADO



906 Main Street
Evanston, Wyoming 82930
Phone No. (307) 789-4545

Location Plat		Scale: 1" = 1000'	SHEET 1h OF 10
Project No.	05-04-36	Date Surveyed: 6/29/05	
Date Drawn: 1/12/11		Latest Revision Date: 9/22/11	

T7S, R95W, 6th P.M.



LEGEND

- ◆ SECTION CORNER LOCATED
- SURFACE LOCATION
- BOTTOM HOLE LOCATION
- RECORD LOCATION OF CORNER

NOTES

1. WELL FOOTAGES ARE MEASURED AT RIGHT ANGLES TO SECTION LINES.
2. BASIS OF BEARING: GEODETIC- BASED ON GPS OBSERVATIONS.
3. ELEVATIONS BASED ON GPS OBSERVATIONS, NAVD 88 (GEOID 03), POST PROCESSED USING NGS OPUS.
4. THE BOTTOM HOLE BEARS S14°29'12"E, 1494' FROM TOP OF HOLE.
5. SEE ADDENDUM TO LEGAL PLAT (SHEET 1K) FOR VISIBLE IMPROVEMENTS WITHIN 400 FEET OF THE PROPOSED OIL & GAS LOCATION.
6. CONTROL FOR SURVEY WAS ESTABLISHED USING DIFFERENTIALLY CORRECTED GPS FROM AN OPUS BASED CONTROL NETWORK. WELL LOCATION WAS ESTABLISHED USING NON-GPS CONVENTIONAL METHODS, THEREFORE NO PDOP READING WAS TAKEN.

FEDERAL 21-9A (PH-21) WELL:
ELEV. UNGRADED GROUND = 6305.6'

FEDERAL 21-9A (PH-21) WELL
(WELLHEAD LOCATION) NAD 83
LATITUDE = 39.425937° N
LONGITUDE = 107.995479° W
(BOTTOM HOLE LOCATION) NAD 83
LATITUDE = 39.421970° N
LONGITUDE = 107.994139° W

CERTIFICATE OF SURVEYOR

I, TED TAGGART OF FRUITA, COLORADO HEREBY CERTIFY THAT THIS MAP WAS MADE FROM NOTES TAKEN DURING AN ACTUAL SURVEY MADE BY ME OR UNDER MY DIRECTION FOR ENCANA OIL & GAS (USA) INC. AND THAT THIS LOCATION HAS BEEN STAKED ON THE GROUND AS SHOWN HEREON.



906 Main Street
Evanston, Wyoming 82930
Phone No. (307) 789-4545

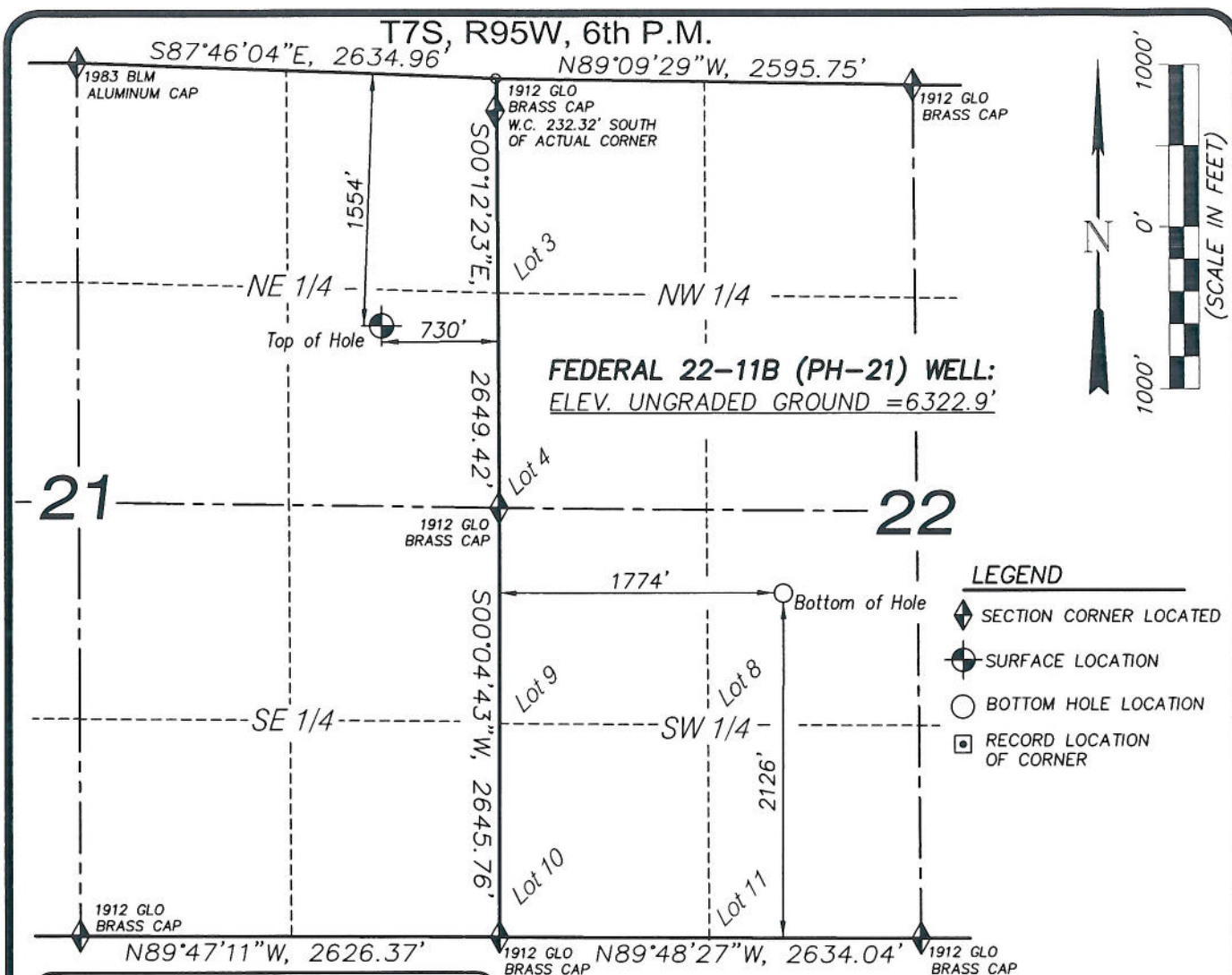
MAP to ACCOMPANY
APPLICATION for PERMIT to DRILL
Encana Oil & Gas (USA) Inc.
Federal 21-9A (PH-21) Well

SE1/4 NE1/4, SECTION 21

T7S, R95W, 6th P.M.

GARFIELD COUNTY, COLORADO

Location Plat		Scale: 1" = 1000'	SHEET 1e OF 10
Project No.	05-04-36	Date Surveyed: 6/29/05	
Date Drawn: 1/12/11		Latest Revision Date: 9/22/11	



FEDERAL 22-11B (PH-21) WELL
(WELLHEAD LOCATION) NAD 83
LATITUDE = 39.426117° N
LONGITUDE = 107.995317° W
(BOTTOM HOLE LOCATION) NAD 83
LATITUDE = 39.421617° N
LONGITUDE = 107.986425° W

CERTIFICATE OF SURVEYOR

I, TED TAGGART OF FRUITA, COLORADO HEREBY CERTIFY THAT THIS MAP WAS MADE FROM NOTES TAKEN DURING AN ACTUAL SURVEY MADE BY ME OR UNDER MY DIRECTION FOR ENCANA OIL & GAS (USA) INC. AND THAT THIS LOCATION HAS BEEN STAKED ON THE GROUND AS SHOWN HEREON.



906 Main Street
Evanston, Wyoming 82930
Phone No. (307) 789-4545



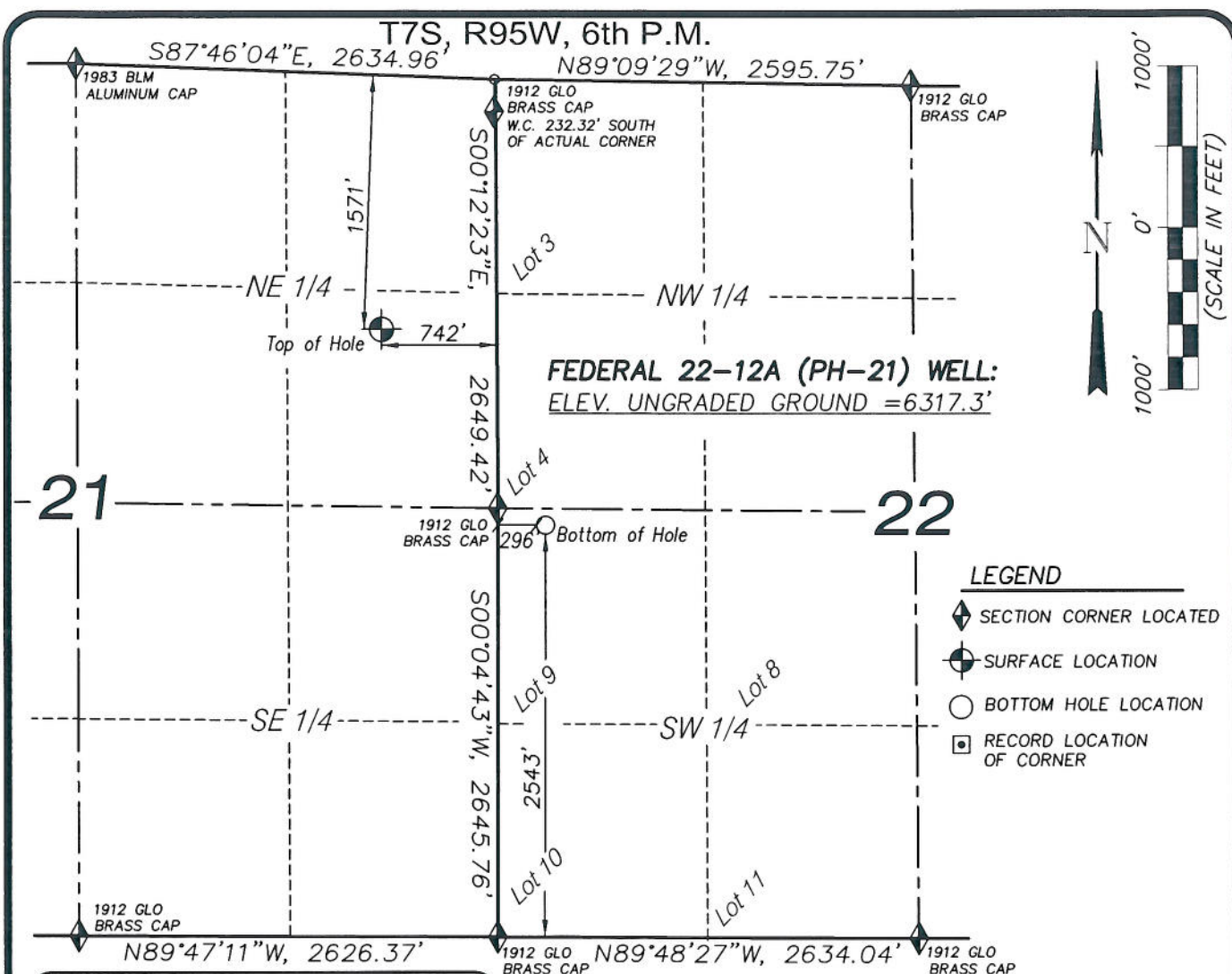
NOTES

1. WELL FOOTAGES ARE MEASURED AT RIGHT ANGLES TO SECTION LINES.
2. BASIS OF BEARING: GEODETIC- BASED ON GPS OBSERVATIONS.
3. ELEVATIONS BASED ON GPS OBSERVATIONS, NAVD 88 (GEOID 03), POST PROCESSED USING NGS OPUS.
4. THE BOTTOM HOLE BEARS S56°41'30"E, 3001' FROM TOP OF HOLE.
5. SEE ADDENDUM TO LEGAL PLAT (SHEET 1K) FOR VISIBLE IMPROVEMENTS WITHIN 400 FEET OF THE PROPOSED OIL & GAS LOCATION.
6. CONTROL FOR SURVEY WAS ESTABLISHED USING DIFFERENTIALLY CORRECTED GPS FROM AN OPUS BASED CONTROL NETWORK. WELL LOCATION WAS ESTABLISHED USING NON-GPS CONVENTIONAL METHODS, THEREFORE NO PDOP READING WAS TAKEN.

MAP to ACCOMPANY
APPLICATION for PERMIT to DRILL
Encana Oil & Gas (USA) Inc.
Federal 22-11B (PH-21) Well

SE1/4 NE1/4, SECTION 21
T7S, R95W, 6th P.M.
GARFIELD COUNTY, COLORADO

Location Plat		Scale: 1" = 1000'	SHEET 1a OF 10
Project No.	05-04-36	Date Surveyed: 6/29/05	
Date Drawn: 1/12/11		Latest Revision Date: 9/22/11	



FEDERAL 22-12A (PH-21) WELL
(WELLHEAD LOCATION) NAD 83
LATITUDE = 39.426072° N
LONGITUDE = 107.995357° W
(BOTTOM HOLE LOCATION) NAD 83
LATITUDE = 39.422762° N
LONGITUDE = 107.991657° W

CERTIFICATE OF SURVEYOR

I, TED TAGGART OF FRUITA, COLORADO HEREBY CERTIFY THAT THIS MAP WAS MADE FROM NOTES TAKEN DURING AN ACTUAL SURVEY MADE BY ME OR UNDER MY DIRECTION FOR ENCANA OIL & GAS (USA) INC. AND THAT THIS LOCATION HAS BEEN STAKED ON THE GROUND AS SHOWN HEREON.



906 Main Street
Evanston, Wyoming 82930
Phone No. (307) 789-4545



NOTES

1. WELL FOOTAGES ARE MEASURED AT RIGHT ANGLES TO SECTION LINES.
2. BASIS OF BEARING: GEODETIC- BASED ON GPS OBSERVATIONS.
3. ELEVATIONS BASED ON GPS OBSERVATIONS, NAVD 88 (GEOID 03), POST PROCESSED USING NGS OPUS.
4. THE BOTTOM HOLE BEARS S40°44'24"E, 1596' FROM TOP OF HOLE.
5. SEE ADDENDUM TO LEGAL PLAT (SHEET 1K) FOR VISIBLE IMPROVEMENTS WITHIN 400 FEET OF THE PROPOSED OIL & GAS LOCATION.
6. CONTROL FOR SURVEY WAS ESTABLISHED USING DIFFERENTIALLY CORRECTED GPS FROM AN OPUS BASED CONTROL NETWORK. WELL LOCATION WAS ESTABLISHED USING NON-GPS CONVENTIONAL METHODS, THEREFORE NO PDOP READING WAS TAKEN.

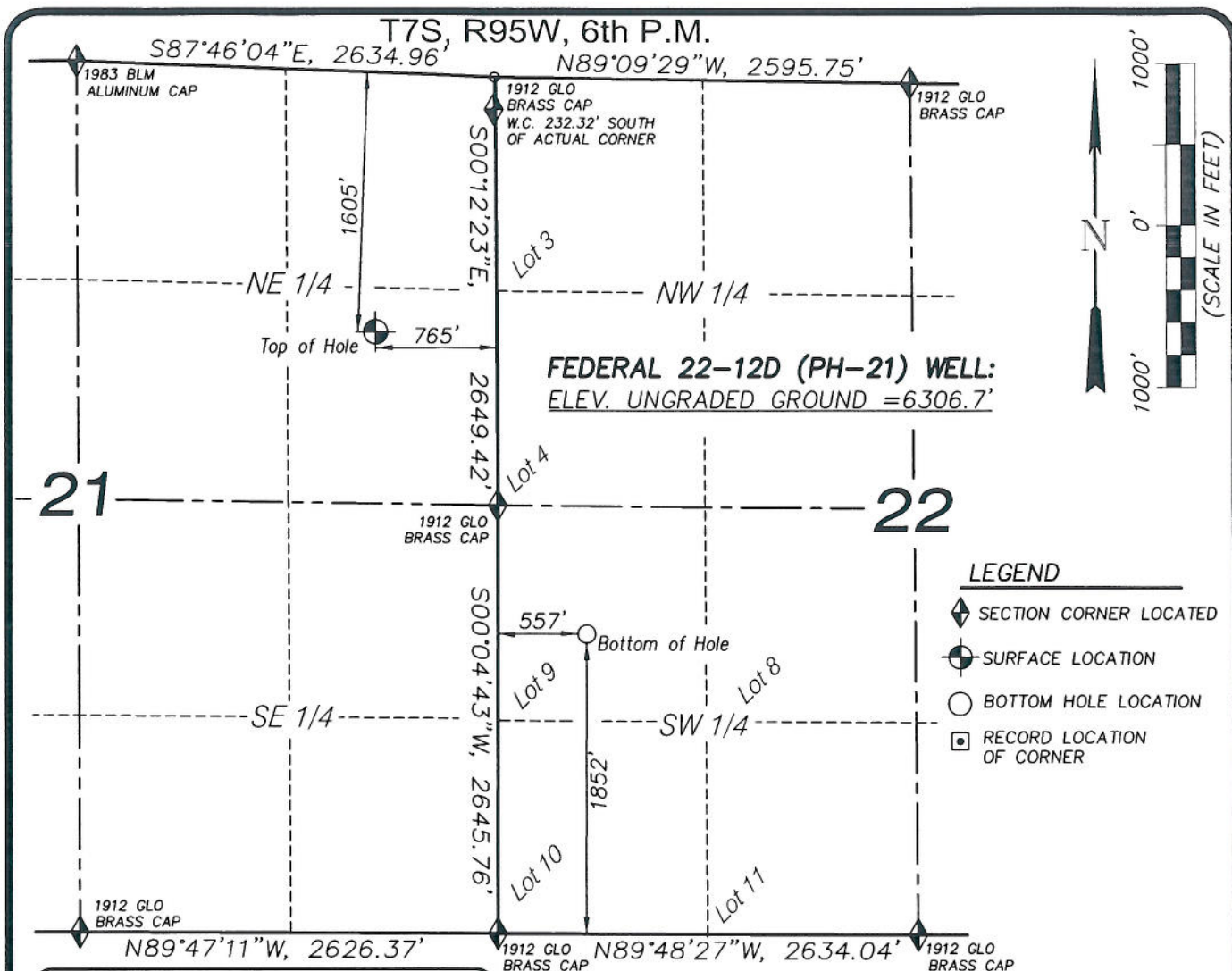
MAP to ACCOMPANY
APPLICATION for PERMIT to DRILL
Encana Oil & Gas (USA) Inc.
Federal 22-12A (PH-21) Well

SE1/4 NE1/4, SECTION 21

T7S, R95W, 6th P.M.

GARFIELD COUNTY, COLORADO

Location Plat		Scale: 1" = 1000'		SHEET 1b OF 10
Project No.	05-04-36	Date Surveyed:	6/29/05	
Date Drawn:	1/12/11	Latest Revision Date:	9/22/11	



FEDERAL 22-12D (PH-21) WELL
(WELLHEAD LOCATION) NAD 83
LATITUDE = 39.425982° N
LONGITUDE = 107.995438° W
(BOTTOM HOLE LOCATION) NAD 83
LATITUDE = 39.420865° N
LONGITUDE = 107.990729° W

CERTIFICATE OF SURVEYOR

I, TED TAGGART OF FRUITA, COLORADO HEREBY CERTIFY THAT THIS MAP WAS MADE FROM NOTES TAKEN DURING AN ACTUAL SURVEY MADE BY ME OR UNDER MY DIRECTION FOR ENCANA OIL & GAS (USA) INC. AND THAT THIS LOCATION HAS BEEN STAKED ON THE GROUND AS SHOWN HEREON.



906 Main Street
Evanston, Wyoming 82930
Phone No. (307) 789-4545



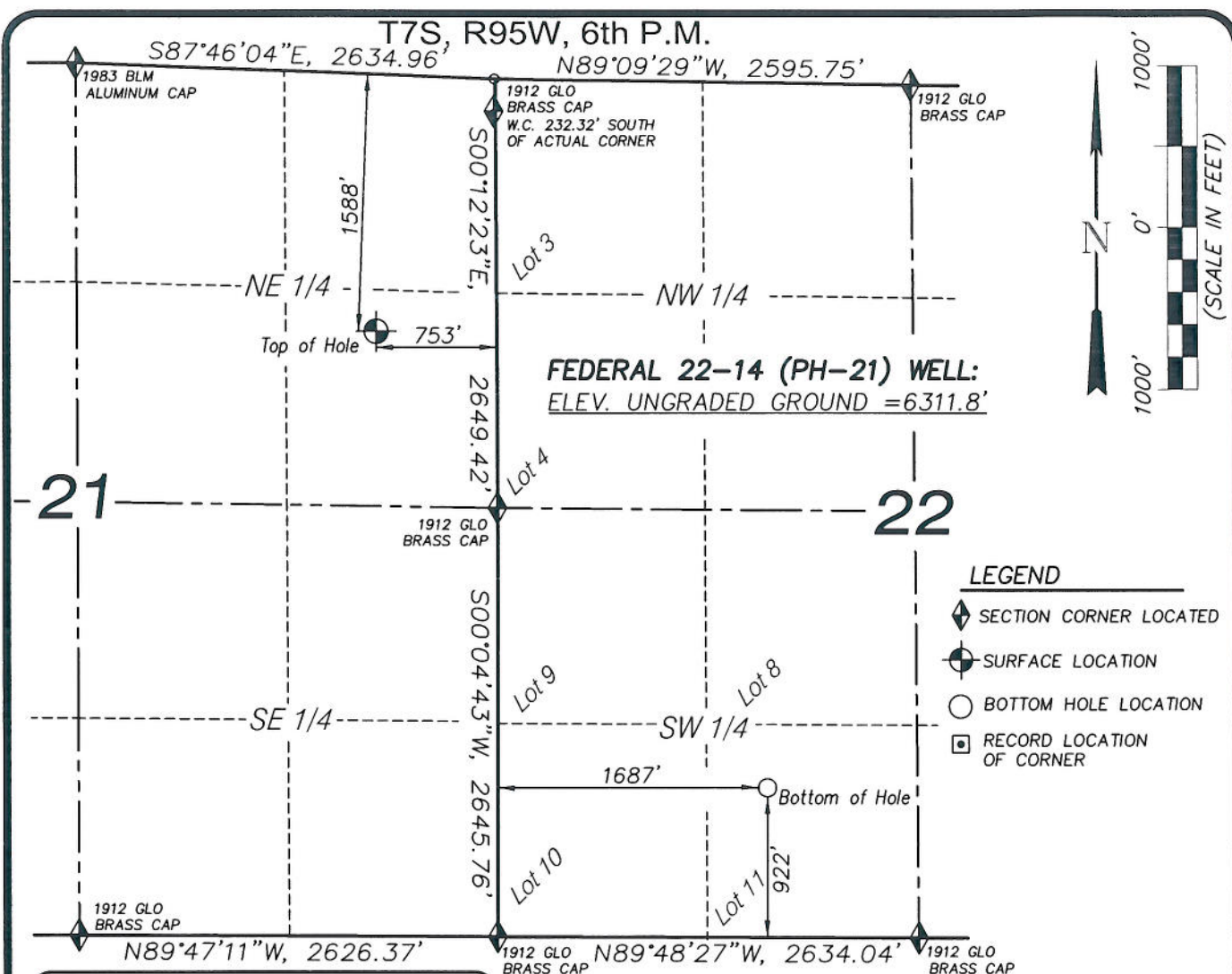
NOTES

1. WELL FOOTAGES ARE MEASURED AT RIGHT ANGLES TO SECTION LINES.
2. BASIS OF BEARING: GEODETIC- BASED ON GPS OBSERVATIONS.
3. ELEVATIONS BASED ON GPS OBSERVATIONS, NAVD 88 (GEOID 03), POST PROCESSED USING NGS OPUS.
4. THE BOTTOM HOLE BEARS S35°20'09"E, 2291' FROM TOP OF HOLE.
5. SEE ADDENDUM TO LEGAL PLAT (SHEET 1K) FOR VISIBLE IMPROVEMENTS WITHIN 400 FEET OF THE PROPOSED OIL & GAS LOCATION.
6. CONTROL FOR SURVEY WAS ESTABLISHED USING DIFFERENTIALLY CORRECTED GPS FROM AN OPUS BASED CONTROL NETWORK. WELL LOCATION WAS ESTABLISHED USING NON-GPS CONVENTIONAL METHODS, THEREFORE NO PDOP READING WAS TAKEN.

MAP to ACCOMPANY
APPLICATION for PERMIT to DRILL
Encana Oil & Gas (USA) Inc.
Federal 22-12D (PH-21) Well

SE1/4 NE1/4, SECTION 21
T7S, R95W, 6th P.M.
GARFIELD COUNTY, COLORADO

Location Plat		Scale: 1" = 1000'	SHEET 1d OF 10
Project No.	05-04-36	Date Surveyed: 6/29/05	
Date Drawn: 1/12/11		Latest Revision Date: 9/22/11	



FEDERAL 22-14 (PH-21) WELL
(WELLHEAD LOCATION) NAD 83
LATITUDE = 39.426027° N
LONGITUDE = 107.995398° W
(BOTTOM HOLE LOCATION) NAD 83
LATITUDE = 39.418312° N
LONGITUDE = 107.986725° W

CERTIFICATE OF SURVEYOR

I, TED TAGGART OF FRUITA, COLORADO HEREBY CERTIFY THAT THIS MAP WAS MADE FROM NOTES TAKEN DURING AN ACTUAL SURVEY MADE BY ME OR UNDER MY DIRECTION FOR ENCANA OIL & GAS (USA) INC. AND THAT THIS LOCATION HAS BEEN STAKED ON THE GROUND AS SHOWN HEREON.



906 Main Street
Evanston, Wyoming 82930
Phone No. (307) 789-4545



NOTES

1. WELL FOOTAGES ARE MEASURED AT RIGHT ANGLES TO SECTION LINES.
2. BASIS OF BEARING: GEODETIC- BASED ON GPS OBSERVATIONS.
3. ELEVATIONS BASED ON GPS OBSERVATIONS, NAVD 88 (GEOID 03), POST PROCESSED USING NGS OPUS.
4. THE BOTTOM HOLE BEARS S40°54'14"E, 3729' FROM TOP OF HOLE.
5. SEE ADDENDUM TO LEGAL PLAT (SHEET 1K) FOR VISIBLE IMPROVEMENTS WITHIN 400 FEET OF THE PROPOSED OIL & GAS LOCATION.
6. CONTROL FOR SURVEY WAS ESTABLISHED USING DIFFERENTIALLY CORRECTED GPS FROM AN OPUS BASED CONTROL NETWORK. WELL LOCATION WAS ESTABLISHED USING NON-GPS CONVENTIONAL METHODS, THEREFORE NO PDOP READING WAS TAKEN.

MAP to ACCOMPANY
APPLICATION for PERMIT to DRILL
Encana Oil & Gas (USA) Inc.
Federal 22-14 (PH-21) Well

SE 1/4 NE 1/4, SECTION 21

T7S, R95W, 6th P.M.

GARFIELD COUNTY, COLORADO

Location Plat		Scale: 1" = 1000'	SHEET 1c OF 10
Project No.	05-04-36	Date Surveyed: 6/29/05	
Date Drawn: 1/12/11		Latest Revision Date: 9/22/11	