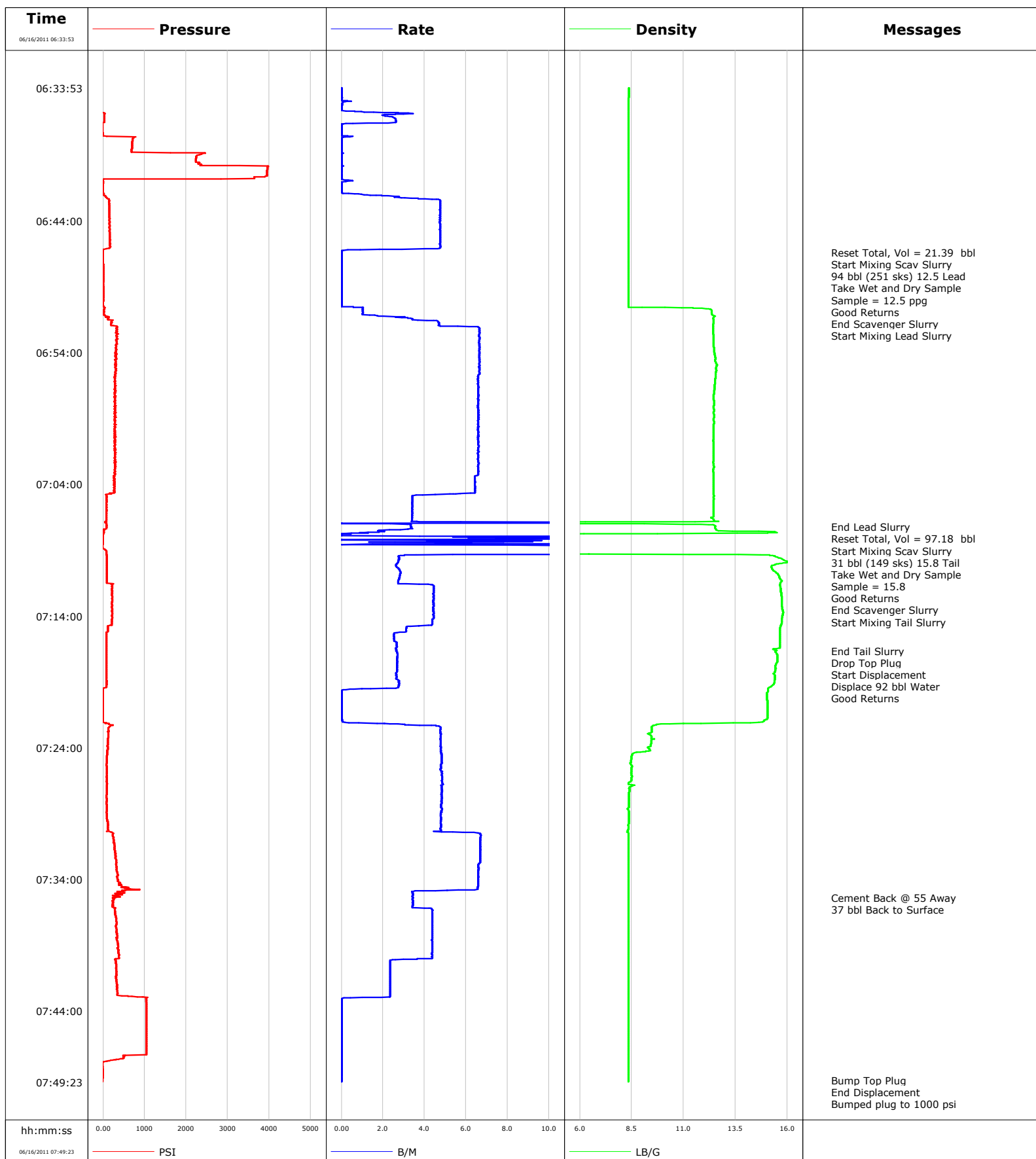


Well Daybreak Federal 19-8D
Field S Parachute
Engineer Tom Leduc
Country United States

Client Encana
SIR No.
Job Type 9 5/8 Surface @ 1230'
Job Date 06-16-2011



Page 1 of 3

Well Daybreak Federal 19-8D Daybreak Federal 19-8D			Field S Parachute		Job Start Jun/16/2011		Customer Encana		Job Number BRWT-00049	
Date	Time 24-hr clock	Treating Pressure PSI	Flow Rate B/M	Density LB/G	Volume BBL	Message				
06/16/2011	06:46:27					Take Wet and Dry Sample				
06/16/2011	06:46:27					Sample = 12.5 ppg				
06/16/2011	06:46:27	-1	0.0	8.34	21.4					
06/16/2011	06:46:28					Good Returns				
06/16/2011	06:46:28	-1	0.0	8.34	21.4					
06/16/2011	06:47:50	2	0.0	8.34	21.4					
06/16/2011	06:50:20	-10	0.0	8.34	21.4					
06/16/2011	06:50:48					End Scavenger Slurry				
06/16/2011	06:50:48	22	1.0	12.34	21.7					
06/16/2011	06:50:49					Start Mixing Lead Slurry				
06/16/2011	06:50:49	22	1.0	12.35	21.7					
06/16/2011	06:52:50	340	6.6	12.44	30.7					
06/16/2011	06:55:20	305	6.6	12.58	47.3					
06/16/2011	06:57:50	300	6.6	12.47	63.8					
06/16/2011	07:00:20	294	6.6	12.45	80.3					
06/16/2011	07:02:50	309	6.6	12.44	96.8					
06/16/2011	07:05:20	84	3.4	12.45	111.2					
06/16/2011	07:07:14					End Lead Slurry				
06/16/2011	07:07:14	82	3.4	12.52	118.5					
06/16/2011	07:07:16					Reset Total, Vol = 97.18 bbl				
06/16/2011	07:07:16	90	3.4	12.51	118.6					
06/16/2011	07:07:17					Start Mixing Scav Slurry				
06/16/2011	07:07:17	82	3.4	12.51	118.6					
06/16/2011	07:07:19					31 bbl (149 sks) 15.8 Tail				
06/16/2011	07:07:19					Take Wet and Dry Sample				
06/16/2011	07:07:19					Sample = 15.8				
06/16/2011	07:07:19	92	3.4	12.51	118.7					
06/16/2011	07:07:20					Good Returns				
06/16/2011	07:07:20	92	3.4	12.52	118.8					
06/16/2011	07:07:50	-8	0.0	2.63	119.7					
06/16/2011	07:09:38					End Scavenger Slurry				
06/16/2011	07:09:38	85	2.8	15.69	142.3					
06/16/2011	07:09:40					Start Mixing Tail Slurry				
06/16/2011	07:09:40	86	2.8	15.72	142.4					
06/16/2011	07:10:20	86	2.7	15.24	144.2					
06/16/2011	07:12:50	214	4.4	15.73	153.2					
06/16/2011	07:15:20	73	2.5	15.63	163.5					
06/16/2011	07:16:38					End Tail Slurry				
06/16/2011	07:16:38	77	2.7	15.48	166.8					
06/16/2011	07:16:43					Drop Top Plug				
06/16/2011	07:16:43	77	2.7	15.41	167.1					
06/16/2011	07:16:45					Start Displacement				
06/16/2011	07:16:45	77	2.7	15.42	167.2					
06/16/2011	07:16:47					Displace 92 bbl Water				
06/16/2011	07:16:47					Good Returns				
06/16/2011	07:16:47	78	2.7	15.44	167.2					
06/16/2011	07:17:50	77	2.7	15.43	170.1					
06/16/2011	07:20:20	-7	0.0	15.02	174.7					
06/16/2011	07:22:50	121	4.8	9.46	177.6					
06/16/2011	07:25:20	83	4.8	8.49	189.6					
06/16/2011	07:27:50	86	4.8	8.38	201.7					
06/16/2011	07:30:20	120	4.8	8.34	213.7					
06/16/2011	07:32:50	309	6.6	8.35	230.2					
06/16/2011	07:35:20	411	3.4	8.35	245.1					

Well Daybreak Federal 19-8D Daybreak Federal 19-8D			Field S Parachute		Job Start Jun/16/2011		Customer Encana		Job Number BRWT-00049	
Date	Time 24-hr clock	Treating Pressure PSI	Flow Rate B/M	Density LB/G	Volume BBL	Message				
06/16/2011	07:35:25	283	3.4	8.35	245.4					
06/16/2011	07:35:27					37 bbl Back to Surface				
06/16/2011	07:35:27	237	3.4	8.35	245.5					
06/16/2011	07:37:50	324	4.4	8.35	255.3					
06/16/2011	07:40:20	301	2.4	8.35	265.6					
06/16/2011	07:42:50	340	2.4	8.35	271.5					
06/16/2011	07:45:20	1041	0.0	8.35	271.9					
06/16/2011	07:47:50	76	0.0	8.35	271.9					
06/16/2011	07:49:14					Bump Top Plug				
06/16/2011	07:49:14	-13	0.0	8.35	271.9					
06/16/2011	07:49:15					End Displacement				
06/16/2011	07:49:15	-13	0.0	8.35	271.9					
06/16/2011	07:49:17					Bumped plug to 1000 psi				
06/16/2011	07:49:17					Bled off Pressure				
06/16/2011	07:49:17					Floats Held				
06/16/2011	07:49:17					37 bbl Cement back to Surface				
06/16/2011	07:49:17	-13	0.0	8.35	271.9					
06/16/2011	07:49:20					End Job				

Post Job Summary

Average Pump Rates, bbl/min					Volume of Fluid Injected, bbl			
Slurry 4.8	N2	Mud 0.0	Maximum Rate 25.0	Total Slurry 271.9	Mud 0.0	Spacer 21.7	N2	
Treating Pressure Summary, psi					Breakdown Fluid			
Maximum 3968	Final 0	Average 351	Bump Plug to 1000	Breakdown	Type FreshWater	Volume 280.0 bbl	Density 8.34 lb/gal	
Avg. N2 Percent		Designed Slurry Volume 125.0 bbl	Displacement 104.8 bbl	Mix Water Temp 70 degF	Cement Circulated to Surface? <input checked="" type="checkbox"/>		Volume	
					Washed Thru Perfs <input type="checkbox"/>		To	
Customer or Authorized Representative Norm McCreary			Schlumberger Supervisor Tom Leduc			Circulation Lost <input type="checkbox"/>	Job Completed <input checked="" type="checkbox"/>	
						-		-