

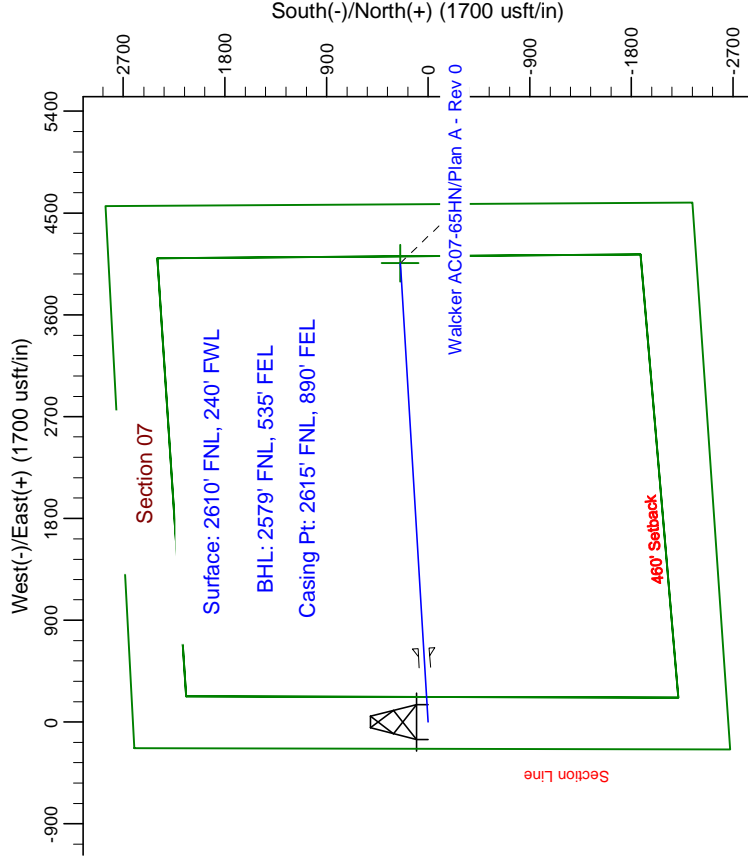
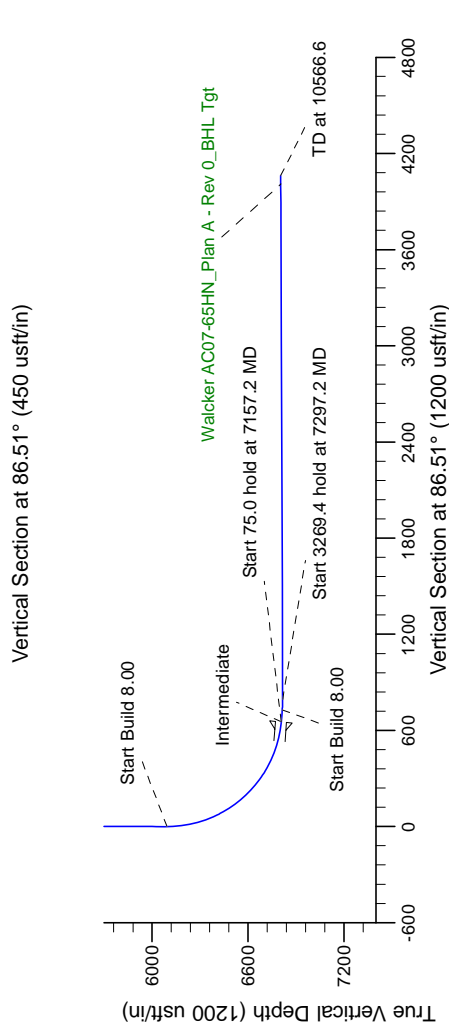
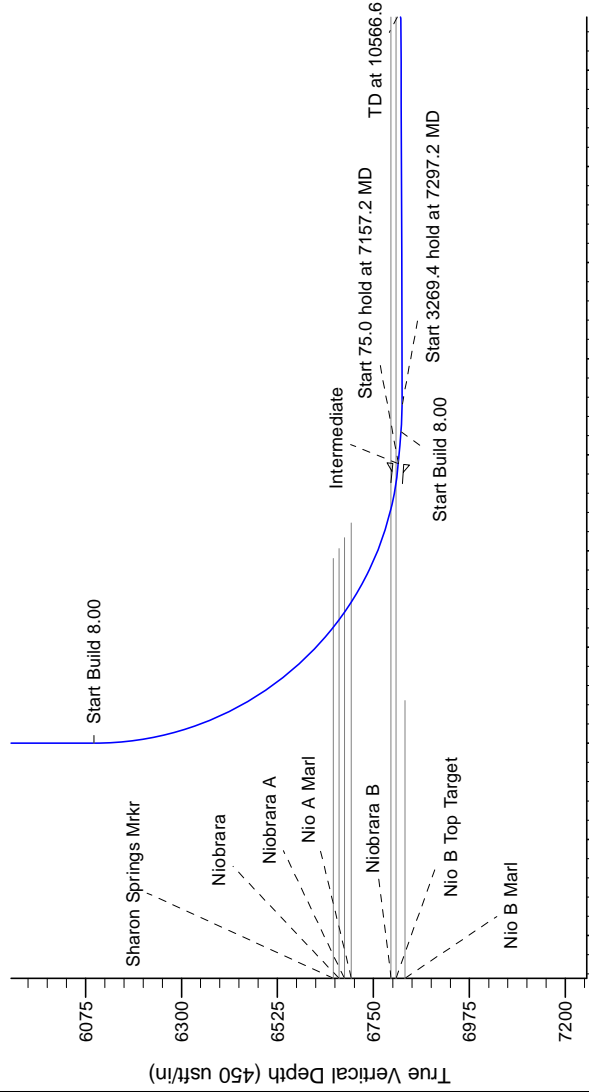
Project: Weld, Co (NAD83)
Site: Sec 7 T07N-R63W
Well: Walcker AC07-65HN
Design: Plan A - Rev 0 (PERMITTING PLAN ONLY)

Northern Region Drilling



SECTION DETAILS

Sec	MD	Inc	Azi	TVD	+N/-S	+E/-W	Dleg	TFace	VSect	Target
1	0.0	0.00	0.00	0.0	0.0	0.0	0.00	0.00	0.0	
2	6094.7	0.00	0.00	6094.7	0.0	0.0	0.00	0.00	0.0	
3	7157.2	85.00	86.51	6808.2	39.8	652.6	8.00	86.51	653.8	
4	7232.2	85.00	86.51	6814.7	44.3	727.1	0.00	0.00	728.5	
5	7297.2	90.20	86.51	6817.4	48.2	791.9	8.00	0.00	793.4	
6	10566.6	90.20	86.51	6806.0	247.1	4055.3	0.00	0.00	4062.8	Walcker AC07-65HN PBHL



Magnetic Model: USMR200510

True North: -0.66°

Magnetic North: 7.95°

Strength: 53222.5nT

Dip Angle: 67.24°

Date: 1/5/2012

Grid North is 0.66° East of True North (Grid Convergence)

Magnetic North is 8.61° East of True North (Magnetic Declination)

To convert to True Direction in a Grid Dataset, Subtract 0.66°

To convert to True Direction in a Magnetic Dataset, Subtract 7.95°

To convert to Magnetic Direction in a Grid Dataset, Add 7.29°

WELL DETAILS: Walcker AC07-65HN			
North	Ground Level:	4824.0	Longitude
1458656.84	Easting	3281350.80	Latitude
		40° 35' 16.800 N	104° 29' 13.092 W
Plan: Plan A - Rev 0 (Walcker AC07-65HN)Permitting Plan Only			
Created By: Diane Blair			
Date: 12/36/January 05 2012			