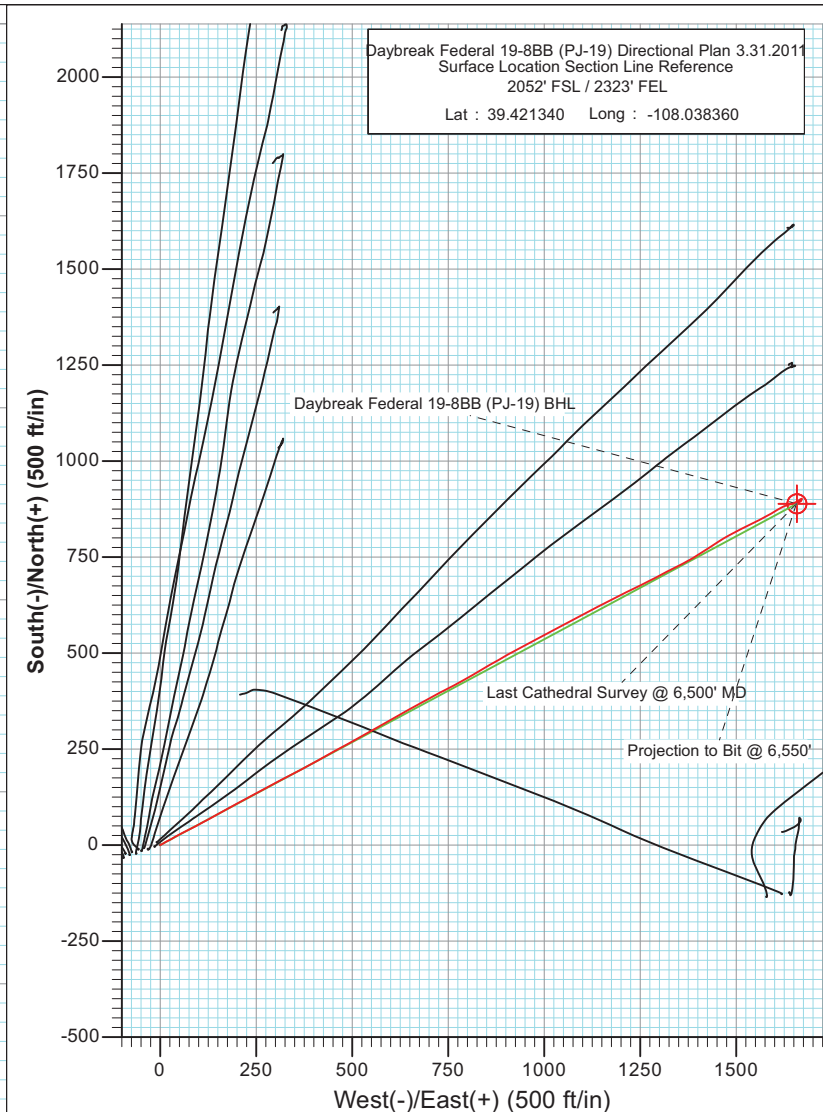
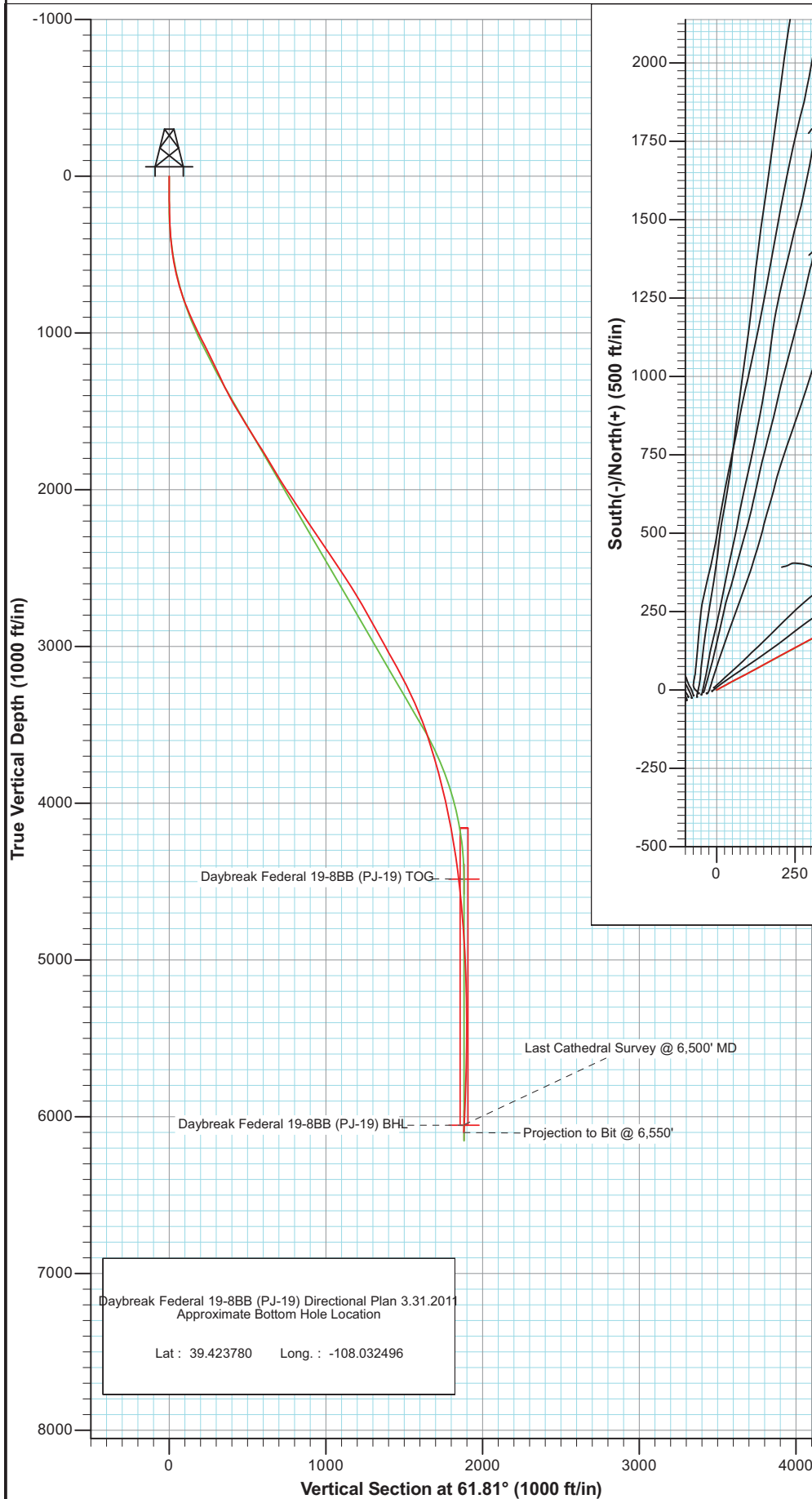




Project: S. Piceance (Parachute)
Site: NWSE S19-T7S-R95W (PJ-19 Pad)
Well: Daybreak Federal 19-8BB (PJ-19) Directional Plan 3.31.2011
Wellbore: DD
Plan: FINAL



Azimuths to True North
Magnetic North: 10.37°

Magnetic Field
Strength: 52212.0nT
Dip Angle: 65.67°
Date: 6/1/2011
Model: IGRF2010

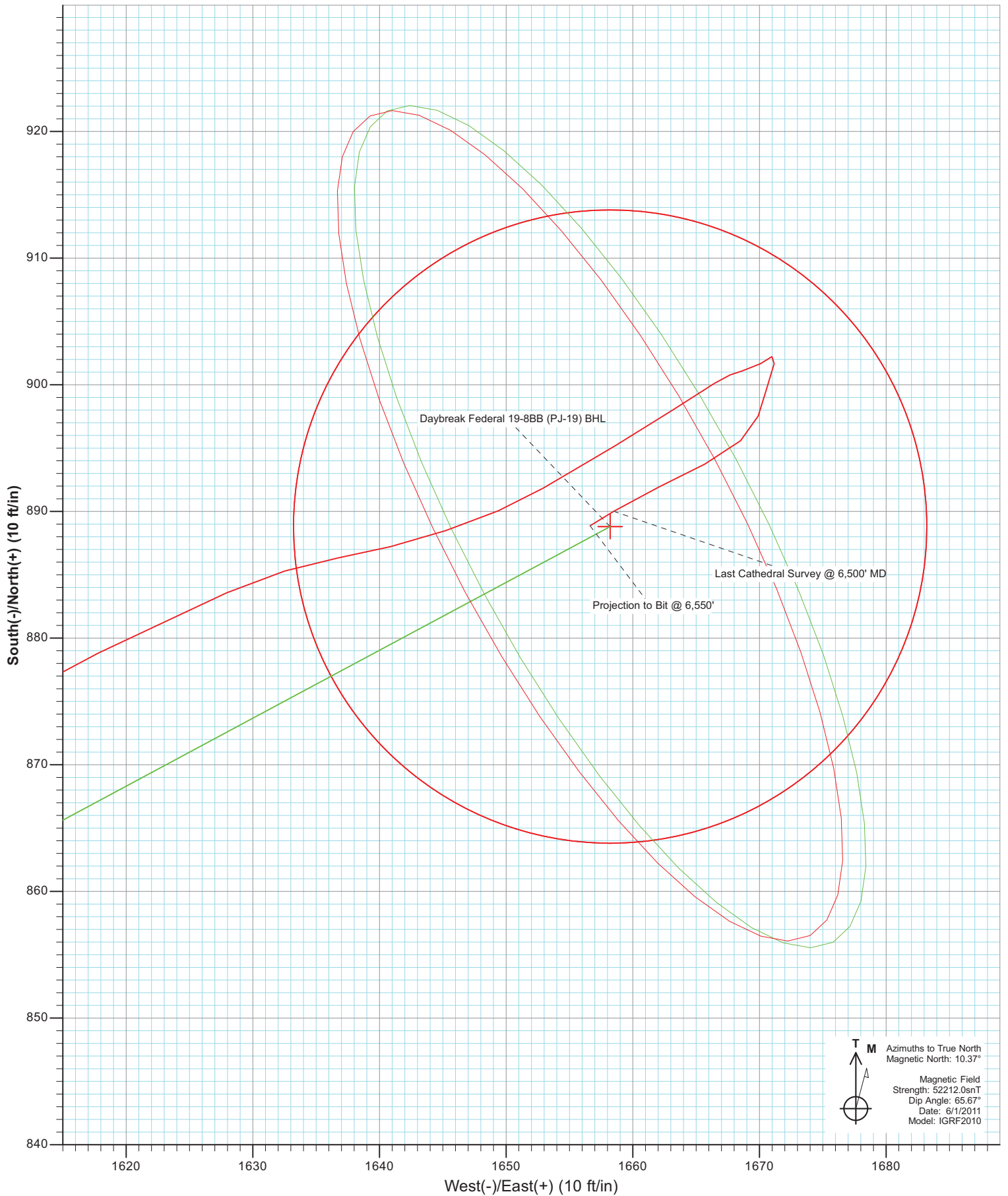
DESIGN DETAILS: DD

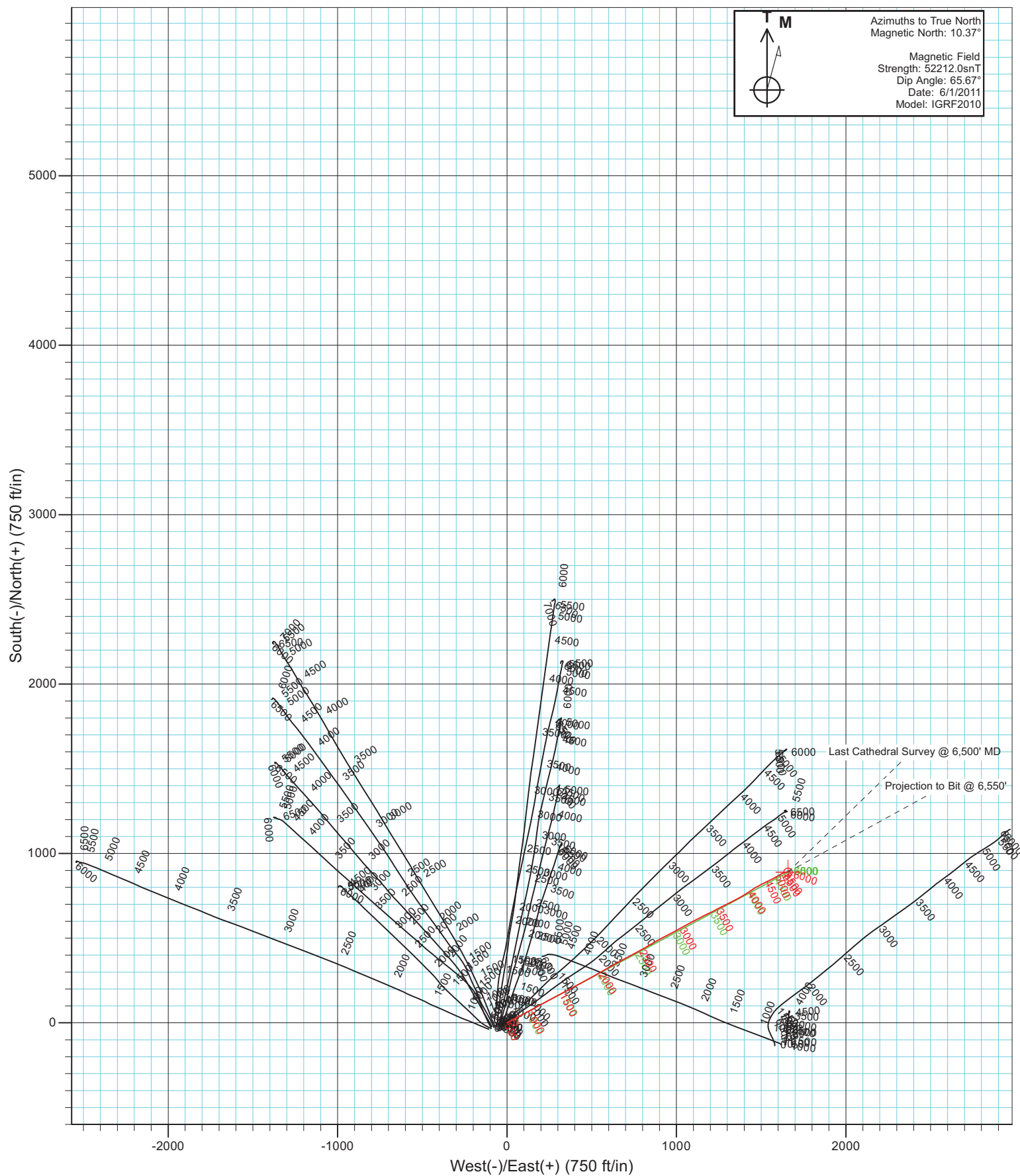
Job# 115213 (SH); BH 115407/107655 (MH); SC
KBE @ 5449.0ft (Nabors M15)

| Target | Azimuth | Origin Type | N/S | E/W |
|-------------------------------------|---------|-------------|-----|-----|
| Daybreak Federal 19-8BB (PJ-19) BHL | 61.81 | Slot | 0.0 | 0.0 |



Project: S. Piceance (Parachute)
Site: NWSE S19-T7S-R95W (PJ-19 Pad)
Well: Daybreak Federal 19-8BB (PJ-19) Directional Plan 3.31.2011
Wellbore: DD
Plan: FINAL





Cathedral Energy Services

Survey Report

| | | | |
|------------------|---|-------------------------------------|---|
| Company: | EnCana Oil & Gas (USA) Inc | Local Co-ordinate Reference: | Well Daybreak Federal 19-8BB (PJ-19) Directiona |
| Project: | S. Piceance (Parachute) | TVD Reference: | KBE @ 5449.0ft (Nabors M15) |
| Site: | NWSE S19-T7S-R95W (PJ-19 Pad) | MD Reference: | KBE @ 5449.0ft (Nabors M15) |
| Well: | Daybreak Federal 19-8BB (PJ-19) Directional | North Reference: | True |
| Wellbore: | Plan 3.31.2011 | Survey Calculation Method: | Minimum Curvature |
| Design: | DD | Database: | USA EDM 5000 Multi Users DB |

| | | | |
|--------------------|--|----------------------|----------------|
| Project | S. Piceance (Parachute), Garfield County, CO | | |
| Map System: | US State Plane 1983 | System Datum: | Mean Sea Level |
| Geo Datum: | North American Datum 1983 | | |
| Map Zone: | Colorado Central Zone | | |

| | | | | |
|------------------------------|-------------------------------|---------------------|-----------------|----------------------------------|
| Site | NWSE S19-T7S-R95W (PJ-19 Pad) | | | |
| Site Position: | | Northing: | 1,588,373.67 ft | Latitude: 39.421340 |
| From: | Lat/Long | Easting: | 2,283,011.65 ft | Longitude: -108.038360 |
| Position Uncertainty: | 0.0 ft | Slot Radius: | 13.200 in | Grid Convergence: -1.60 ° |

| | | | | |
|-----------------------------|--|----------------------------|------------------|---------------------------------|
| Well | Daybreak Federal 19-8BB (PJ-19) Directional Plan 3.31.2011 | | | |
| Well Position | +N/-S | 0.0 ft | Northing: | 1,588,373.64 ft |
| | +E/-W | 0.0 ft | Easting: | 2,283,011.65 ft |
| Position Uncertainty | 0.0 ft | Wellhead Elevation: | ft | Ground Level: 5,427.0 ft |

| | | | | | |
|------------------|-------------------|--------------------|------------------------|----------------------|----------------------------|
| Wellbore | DD | | | | |
| Magnetics | Model Name | Sample Date | Declination (°) | Dip Angle (°) | Field Strength (nT) |
| | IGRF2010 | 6/1/2011 | 10.37 | 65.67 | 52,212 |

| | | | | |
|--------------------------|------------------------------|-------------------|-------------------|--------------------------|
| Design | DD | | | |
| Audit Notes: | | | | |
| Version: | 1.0 | Phase: | ACTUAL | Tie On Depth: 0.0 |
| Vertical Section: | Depth From (TVD) (ft) | +N/-S (ft) | +E/-W (ft) | Direction (°) |
| | 0.0 | 0.0 | 0.0 | 61.81 |

| | | | | |
|-----------------------|----------------|--------------------------|------------------|--------------------|
| Survey Program | Date | 9/27/2011 | | |
| From (ft) | To (ft) | Survey (Wellbore) | Tool Name | Description |
| 126.0 | 1,830.0 | Survey #1 (DD) | MWD | Geolink MWD |
| 1,926.0 | 6,550.0 | Survey #2 (DD) | MWD | Geolink MWD |

| | | | | | | | | | |
|----------------------------|------------------------|--------------------|----------------------------|-------------------|-------------------|------------------------------|------------------------------|-----------------------------|------------------------------|
| Survey | | | | | | | | | |
| Measured Depth (ft) | Inclination (°) | Azimuth (°) | Vertical Depth (ft) | +N/-S (ft) | +E/-W (ft) | Vertical Section (ft) | Dogleg Rate (°/100ft) | Build Rate (°/100ft) | Formations / Comments |
| 0.0 | 0.00 | 0.00 | 0.0 | 0.0 | 0.0 | 0.0 | 0.00 | 0.00 | |
| 126.0 | 0.50 | 51.10 | 126.0 | 0.3 | 0.4 | 0.5 | 0.40 | 0.40 | |
| 156.0 | 0.60 | 62.00 | 156.0 | 0.5 | 0.7 | 0.8 | 0.48 | 0.33 | |
| 187.0 | 0.80 | 50.60 | 187.0 | 0.7 | 1.0 | 1.2 | 0.78 | 0.65 | |
| 218.0 | 1.30 | 66.50 | 218.0 | 1.0 | 1.5 | 1.8 | 1.85 | 1.61 | |
| 248.0 | 1.70 | 62.50 | 248.0 | 1.3 | 2.2 | 2.5 | 1.38 | 1.33 | |
| 279.0 | 2.10 | 61.80 | 279.0 | 1.8 | 3.1 | 3.6 | 1.29 | 1.29 | |
| 310.0 | 2.70 | 63.00 | 309.9 | 2.4 | 4.2 | 4.9 | 1.94 | 1.94 | |
| 341.0 | 3.30 | 61.00 | 340.9 | 3.2 | 5.7 | 6.5 | 1.96 | 1.94 | |
| 371.0 | 4.00 | 60.10 | 370.8 | 4.1 | 7.3 | 8.4 | 2.34 | 2.33 | |
| 402.0 | 4.70 | 61.00 | 401.7 | 5.3 | 9.4 | 10.8 | 2.27 | 2.26 | |
| 433.0 | 5.90 | 62.00 | 432.6 | 6.6 | 11.9 | 13.6 | 3.88 | 3.87 | |

Cathedral Energy Services

Survey Report

| | | | |
|------------------|---|-------------------------------------|--|
| Company: | EnCana Oil & Gas (USA) Inc | Local Co-ordinate Reference: | Well Daybreak Federal 19-8BB (PJ-19) Directional |
| Project: | S. Piceance (Parachute) | TVD Reference: | KBE @ 5449.0ft (Nabors M15) |
| Site: | NWSE S19-T7S-R95W (PJ-19 Pad) | MD Reference: | KBE @ 5449.0ft (Nabors M15) |
| Well: | Daybreak Federal 19-8BB (PJ-19) Directional | North Reference: | True |
| Wellbore: | Open 3.31.2011 | Survey Calculation Method: | Minimum Curvature |
| Design: | DD | Database: | USA EDM 5000 Multi Users DB |

| Survey | | | | | | | | | |
|---------------------|-----------------|-------------|---------------------|------------|------------|-----------------------|-----------------------|----------------------|-----------------------------------|
| Measured Depth (ft) | Inclination (°) | Azimuth (°) | Vertical Depth (ft) | +N/-S (ft) | +E/-W (ft) | Vertical Section (ft) | Dogleg Rate (°/100ft) | Build Rate (°/100ft) | Formations / Comments |
| 464.0 | 6.90 | 61.80 | 463.4 | 8.3 | 14.9 | 17.1 | 3.23 | 3.23 | |
| 494.0 | 8.10 | 61.40 | 493.2 | 10.1 | 18.4 | 21.0 | 4.00 | 4.00 | |
| 526.0 | 9.20 | 61.60 | 524.8 | 12.4 | 22.6 | 25.8 | 3.44 | 3.44 | |
| 556.0 | 10.50 | 61.50 | 554.4 | 14.9 | 27.1 | 30.9 | 4.33 | 4.33 | |
| 586.0 | 11.40 | 61.30 | 583.8 | 17.6 | 32.1 | 36.6 | 3.00 | 3.00 | |
| 617.0 | 12.40 | 61.40 | 614.1 | 20.7 | 37.7 | 43.0 | 3.23 | 3.23 | |
| 648.0 | 13.70 | 61.60 | 644.3 | 24.0 | 43.9 | 50.0 | 4.20 | 4.19 | |
| 679.0 | 14.90 | 61.90 | 674.4 | 27.6 | 50.6 | 57.7 | 3.88 | 3.87 | |
| 710.0 | 16.50 | 62.60 | 704.2 | 31.5 | 58.1 | 66.1 | 5.20 | 5.16 | |
| 740.0 | 17.70 | 62.20 | 732.9 | 35.6 | 65.9 | 74.9 | 4.02 | 4.00 | |
| 770.0 | 19.10 | 62.50 | 761.4 | 40.0 | 74.3 | 84.4 | 4.68 | 4.67 | |
| 801.0 | 20.30 | 62.70 | 790.5 | 44.8 | 83.5 | 94.8 | 3.88 | 3.87 | |
| 832.0 | 21.00 | 62.50 | 819.5 | 49.8 | 93.3 | 105.7 | 2.27 | 2.26 | |
| 862.0 | 22.10 | 61.90 | 847.5 | 55.0 | 103.0 | 116.8 | 3.74 | 3.67 | |
| 893.0 | 23.10 | 62.10 | 876.1 | 60.6 | 113.5 | 128.7 | 3.24 | 3.23 | |
| 924.0 | 24.00 | 60.90 | 904.5 | 66.5 | 124.4 | 141.1 | 3.29 | 2.90 | |
| 955.0 | 25.00 | 61.10 | 932.7 | 72.7 | 135.6 | 153.9 | 3.24 | 3.23 | |
| 985.0 | 25.60 | 60.90 | 959.8 | 78.9 | 146.9 | 166.7 | 2.02 | 2.00 | |
| 1,016.0 | 26.00 | 61.50 | 987.7 | 85.4 | 158.7 | 180.2 | 1.54 | 1.29 | |
| 1,078.0 | 26.50 | 61.40 | 1,043.3 | 98.5 | 182.8 | 207.6 | 0.81 | 0.81 | |
| 1,108.0 | 26.50 | 61.20 | 1,070.2 | 105.0 | 194.5 | 221.0 | 0.30 | 0.00 | |
| 1,175.0 | 26.80 | 61.30 | 1,130.1 | 119.4 | 220.9 | 251.1 | 0.45 | 0.45 | |
| 1,352.0 | 24.87 | 62.10 | 1,289.4 | 156.0 | 288.8 | 328.2 | 1.11 | -1.09 | |
| 1,448.0 | 27.07 | 62.89 | 1,375.7 | 175.4 | 326.0 | 370.2 | 2.32 | 2.29 | |
| 1,543.0 | 29.71 | 61.75 | 1,459.2 | 196.4 | 366.0 | 415.4 | 2.84 | 2.78 | |
| 1,639.0 | 32.21 | 61.22 | 1,541.6 | 220.0 | 409.4 | 464.8 | 2.62 | 2.60 | |
| 1,734.0 | 31.68 | 60.69 | 1,622.2 | 244.4 | 453.4 | 515.0 | 0.63 | -0.56 | |
| 1,830.0 | 32.30 | 62.54 | 1,703.6 | 268.6 | 498.1 | 565.9 | 1.21 | 0.65 | Last Cathedral Survey @ 1,830' MD |
| 1,926.0 | 31.20 | 60.43 | 1,785.2 | 292.7 | 542.5 | 616.4 | 1.63 | -1.15 | |
| 2,021.0 | 30.81 | 59.11 | 1,866.7 | 317.3 | 584.8 | 665.3 | 0.83 | -0.41 | |
| 2,116.0 | 32.17 | 60.95 | 1,947.7 | 342.1 | 627.8 | 714.9 | 1.75 | 1.43 | |
| 2,212.0 | 33.84 | 61.48 | 2,028.2 | 367.2 | 673.6 | 767.2 | 1.77 | 1.74 | |
| 2,307.0 | 32.69 | 62.36 | 2,107.6 | 391.8 | 719.6 | 819.3 | 1.31 | -1.21 | |
| 2,403.0 | 34.85 | 61.57 | 2,187.4 | 416.9 | 766.7 | 872.6 | 2.30 | 2.25 | |
| 2,498.0 | 33.88 | 60.16 | 2,265.8 | 443.0 | 813.5 | 926.3 | 1.32 | -1.02 | |
| 2,592.0 | 33.13 | 59.46 | 2,344.2 | 469.1 | 858.3 | 978.1 | 0.90 | -0.80 | |
| 2,688.0 | 34.80 | 61.39 | 2,423.8 | 495.5 | 905.0 | 1,031.7 | 2.07 | 1.74 | |
| 2,783.0 | 33.97 | 61.75 | 2,502.2 | 521.0 | 952.2 | 1,085.4 | 0.90 | -0.87 | |
| 2,879.0 | 32.83 | 62.10 | 2,582.4 | 545.9 | 998.8 | 1,138.2 | 1.20 | -1.19 | |
| 2,974.0 | 30.94 | 61.31 | 2,663.0 | 569.7 | 1,043.0 | 1,188.4 | 2.04 | -1.99 | |
| 3,069.0 | 30.10 | 62.36 | 2,744.9 | 592.5 | 1,085.5 | 1,236.6 | 1.05 | -0.88 | |
| 3,164.0 | 28.78 | 61.66 | 2,827.6 | 614.4 | 1,126.7 | 1,283.3 | 1.44 | -1.39 | |
| 3,260.0 | 29.75 | 64.38 | 2,911.3 | 635.7 | 1,168.6 | 1,330.2 | 1.71 | 1.01 | |
| 3,356.0 | 27.99 | 63.24 | 2,995.4 | 656.1 | 1,210.2 | 1,376.6 | 1.92 | -1.83 | |
| 3,451.0 | 29.76 | 63.42 | 3,078.6 | 676.7 | 1,251.2 | 1,422.4 | 1.87 | 1.86 | |
| 3,545.0 | 27.99 | 62.19 | 3,160.9 | 697.4 | 1,291.5 | 1,467.8 | 1.99 | -1.88 | |
| 3,641.0 | 27.03 | 63.42 | 3,246.0 | 717.7 | 1,331.0 | 1,512.1 | 1.16 | -1.00 | |
| 3,736.0 | 24.83 | 62.36 | 3,331.5 | 736.6 | 1,368.0 | 1,553.7 | 2.37 | -2.32 | |
| 3,831.0 | 22.46 | 57.18 | 3,418.5 | 755.7 | 1,400.9 | 1,591.7 | 3.32 | -2.49 | |
| 3,927.0 | 20.13 | 57.09 | 3,507.9 | 774.6 | 1,430.2 | 1,626.4 | 2.43 | -2.43 | |
| 4,022.0 | 17.40 | 56.65 | 3,597.9 | 791.3 | 1,455.8 | 1,656.9 | 2.88 | -2.87 | |
| 4,118.0 | 17.14 | 62.19 | 3,689.6 | 805.8 | 1,480.3 | 1,685.3 | 1.73 | -0.27 | |
| 4,213.0 | 14.50 | 61.83 | 3,781.0 | 817.9 | 1,503.1 | 1,711.2 | 2.78 | -2.78 | |

Cathedral Energy Services

Survey Report

| | | | |
|------------------|---|-------------------------------------|---|
| Company: | EnCana Oil & Gas (USA) Inc | Local Co-ordinate Reference: | Well Daybreak Federal 19-8BB (PJ-19) Directiona |
| Project: | S. Piceance (Parachute) | TVD Reference: | KBE @ 5449.0ft (Nabors M15) |
| Site: | NWSE S19-T7S-R95W (PJ-19 Pad) | MD Reference: | KBE @ 5449.0ft (Nabors M15) |
| Well: | Daybreak Federal 19-8BB (PJ-19) Directional | North Reference: | True |
| Wellbore: | Open 3.31.2011 | Survey Calculation Method: | Minimum Curvature |
| Design: | DD | Database: | USA EDM 5000 Multi Users DB |

| Survey | | | | | | | | | |
|---------------------|-----------------|-------------|---------------------|------------|------------|-----------------------|-----------------------|----------------------|-----------------------------------|
| Measured Depth (ft) | Inclination (°) | Azimuth (°) | Vertical Depth (ft) | +N/-S (ft) | +E/-W (ft) | Vertical Section (ft) | Dogleg Rate (°/100ft) | Build Rate (°/100ft) | Formations / Comments |
| 4,309.0 | 14.77 | 62.98 | 3,873.8 | 829.2 | 1,524.6 | 1,735.5 | 0.41 | 0.28 | |
| 4,404.0 | 12.96 | 63.42 | 3,966.1 | 839.4 | 1,544.9 | 1,758.2 | 1.91 | -1.91 | |
| 4,499.0 | 12.17 | 65.26 | 4,058.8 | 848.4 | 1,563.6 | 1,778.9 | 0.93 | -0.83 | |
| 4,594.0 | 10.24 | 59.28 | 4,152.0 | 856.9 | 1,579.9 | 1,797.3 | 2.37 | -2.03 | |
| 4,689.0 | 9.18 | 59.64 | 4,245.6 | 865.1 | 1,593.7 | 1,813.3 | 1.12 | -1.12 | |
| 4,785.0 | 8.57 | 59.37 | 4,340.5 | 872.6 | 1,606.5 | 1,828.1 | 0.64 | -0.64 | |
| 4,880.0 | 7.08 | 63.24 | 4,434.6 | 878.8 | 1,617.8 | 1,841.1 | 1.66 | -1.57 | |
| 4,976.0 | 6.33 | 66.58 | 4,529.9 | 883.6 | 1,627.9 | 1,852.2 | 0.88 | -0.78 | |
| 5,070.0 | 4.97 | 80.29 | 4,623.5 | 886.3 | 1,636.7 | 1,861.3 | 2.03 | -1.45 | |
| 5,165.0 | 5.67 | 71.85 | 4,718.1 | 888.5 | 1,645.2 | 1,869.8 | 1.10 | 0.74 | |
| 5,261.0 | 4.39 | 59.55 | 4,813.7 | 891.8 | 1,652.9 | 1,878.1 | 1.74 | -1.33 | |
| 5,356.0 | 3.47 | 59.55 | 4,908.5 | 895.1 | 1,658.5 | 1,884.6 | 0.97 | -0.97 | |
| 5,452.0 | 2.90 | 56.56 | 5,004.3 | 897.9 | 1,663.0 | 1,890.0 | 0.62 | -0.59 | |
| 5,548.0 | 1.93 | 58.58 | 5,100.3 | 900.1 | 1,666.5 | 1,894.0 | 1.01 | -1.01 | |
| 5,643.0 | 1.01 | 79.94 | 5,195.2 | 901.1 | 1,668.6 | 1,896.4 | 1.11 | -0.97 | |
| 5,738.0 | 0.92 | 55.68 | 5,290.2 | 901.7 | 1,670.1 | 1,897.9 | 0.44 | -0.09 | |
| 5,834.0 | 0.35 | 65.70 | 5,386.2 | 902.2 | 1,671.0 | 1,899.0 | 0.60 | -0.59 | |
| 5,929.0 | 0.83 | 188.48 | 5,481.2 | 901.7 | 1,671.2 | 1,898.9 | 1.12 | 0.51 | |
| 6,024.0 | 1.58 | 200.70 | 5,576.2 | 899.8 | 1,670.6 | 1,897.5 | 0.83 | 0.79 | |
| 6,119.0 | 1.23 | 192.97 | 5,671.1 | 897.5 | 1,669.9 | 1,895.8 | 0.42 | -0.37 | |
| 6,215.0 | 1.80 | 230.58 | 5,767.1 | 895.6 | 1,668.5 | 1,893.7 | 1.16 | 0.59 | |
| 6,310.0 | 2.29 | 241.83 | 5,862.1 | 893.7 | 1,665.7 | 1,890.3 | 0.66 | 0.52 | |
| 6,406.0 | 2.50 | 245.09 | 5,958.0 | 891.9 | 1,662.1 | 1,886.3 | 0.26 | 0.22 | |
| 6,500.0 | 2.50 | 238.41 | 6,051.9 | 890.0 | 1,658.5 | 1,882.2 | 0.31 | 0.00 | Last Cathedral Survey @ 6,500' MD |
| 6,550.0 | 2.50 | 238.41 | 6,101.8 | 888.9 | 1,656.6 | 1,880.0 | 0.00 | 0.00 | Projection to Bit @ 6,550' |

Cathedral Energy Services

Survey Report

| | | | |
|------------------|---|-------------------------------------|---|
| Company: | EnCana Oil & Gas (USA) Inc | Local Co-ordinate Reference: | Well Daybreak Federal 19-8BB (PJ-19) Directiona |
| Project: | S. Piceance (Parachute) | TVD Reference: | KBE @ 5449.0ft (Nabors M15) |
| Site: | NWSE S19-T7S-R95W (PJ-19 Pad) | MD Reference: | KBE @ 5449.0ft (Nabors M15) |
| Well: | Daybreak Federal 19-8BB (PJ-19) Directional | North Reference: | True |
| Wellbore: | Open 3.31.2011 | Survey Calculation Method: | Minimum Curvature |
| Design: | DD | Database: | USA EDM 5000 Multi Users DB |

| Targets | | | | | | | | | |
|--|-----------|----------|---------|-------|---------|--------------|--------------|-----------|-------------|
| Target Name | Dip Angle | Dip Dir. | TVD | +N/-S | +E/-W | Northing | Easting | Latitude | Longitude |
| - hit/miss target | (°) | (°) | (ft) | (ft) | (ft) | (ft) | (ft) | | |
| - Shape | | | | | | | | | |
| Interp @ 1067.1 (Daybreak) - actual wellpath misses target center by 10.1ft at 1099.5ft MD (1062.5 TVD, 103.1 N, 191.2 E) - Point | 0.00 | 0.00 | 1,067.1 | 98.3 | 183.5 | 1,588,466.82 | 2,283,197.80 | 39.421610 | -108.037711 |
| Daybreak Federal 19-8B - actual wellpath misses target center by 2.5ft at 6500.0ft MD (6051.9 TVD, 890.0 N, 1658.5 E) - Circle (radius 25.0) | 0.00 | 0.00 | 6,054.0 | 888.8 | 1,658.2 | 1,589,215.78 | 2,284,694.05 | 39.423780 | -108.032490 |
| Interp @ 976.8 (Daybreak) - actual wellpath misses target center by 62.4ft at 835.6ft MD (822.9 TVD, 50.5 N, 94.4 E) - Point | 0.00 | 0.00 | 800.0 | 78.0 | 145.5 | 1,588,447.55 | 2,283,159.30 | 39.421554 | -108.037845 |
| Daybreak Federal 19-8B - actual wellpath misses target center by 35.6ft at 4933.8ft MD (4488.0 TVD, 881.6 N, 1623.6 E) - Point | 0.00 | 0.00 | 4,484.0 | 888.8 | 1,658.2 | 1,589,215.78 | 2,284,694.05 | 39.423780 | -108.032490 |
| Interp @ 929 (Daybreak) - actual wellpath misses target center by 11.7ft at 956.4ft MD (934.0 TVD, 73.0 N, 136.2 E) - Point | 0.00 | 0.00 | 929.0 | 78.0 | 145.5 | 1,588,447.55 | 2,283,159.30 | 39.421554 | -108.037845 |

| Design Annotations | | | | | |
|--------------------|----------------|-------------------|------------|-----------------------------------|--|
| Measured Depth | Vertical Depth | Local Coordinates | | | |
| (ft) | (ft) | +N/-S (ft) | +E/-W (ft) | Comment | |
| 1,830.0 | 1,703.6 | 268.6 | 498.1 | Last Cathedral Survey @ 1,830' MD | |
| 6,500.0 | 6,051.9 | 890.0 | 1,658.5 | Last Cathedral Survey @ 6,500' MD | |
| 6,550.0 | 6,101.8 | 888.9 | 1,656.6 | Projection to Bit @ 6,550' | |

Checked By: _____ Approved By: _____ Date: _____