

SYNERGY RESOURCES CORPORATION  
20203 HIGHWAY 60  
PLATTEVILLE, Colorado

SRC Pratt  
SRC Pratt 14-29D

**Ensign/33**

## **Post Job Summary**

# **Cement Production Casing**

Date Prepared: 3/21/11  
Version: 1

Service Supervisor: WHEELER, JUSTIN

Submitted by: FRY, DOMINIK

**HALLIBURTON**

# HALLIBURTON

## ***Pumping Schedule***

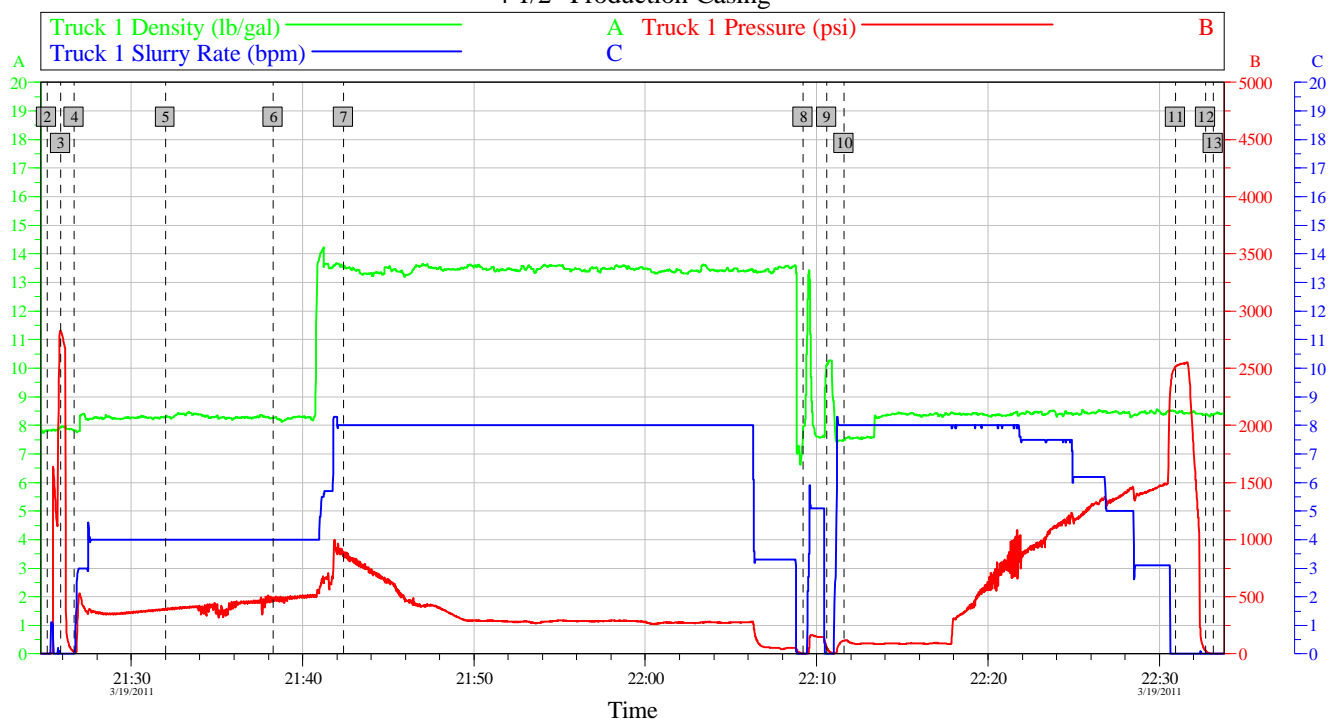
---

Stage /Plug #	Fluid #	Fluid Type	Fluid Name	Surface Density lbm/gal	Avg Rate bbl/min
1	1	Spacer	Water Spacer	8.33	5.00
1	2	Spacer	MUD FLUSH III	8.40	5.00
1	3	Cement Slurry	13.5# Fracem	13.50	5.00
1	4	Spacer	ClaFix III Water Displacement	8.33	7.00

## Data Acquisition

Synergy - SRC Pratt 14-29 D

4 1/2" Production Casing



Global Event Log											
Intersection		TIP	TISR	Intersection		TIP	TISR	Intersection		TIP	TISR
2 Start Job	21:25:05	5.000	0.000	3 Test Lines	21:25:53	2826	0.000	4 Pump Fresh Water	21:26:41	18.46	0.000
5 Pump Mud Flush	21:32:00	396.6	4.000	6 Pump Fresh Water	21:38:18	493.6	4.000	7 Pump Cement	21:42:23	891.2	8.000
8 Clean Lines	22:09:13	1.997	0.000	9 Drop Top Plug	22:10:35	59.28	0.000	10 Pump Displacement	22:11:36	116.7	8.000
11 Bump Plug	22:30:57	2511	0.000	12 Check Floats, Floats Holding	22:32:42	24.69	0.000	13 End Job	22:33:10	2.000	0.000

Customer:  
Well Description:

Job Date: 19-Mar-2011  
UWI:

Sales Order #: 8046500

OptiCem v6.4.9  
19-Mar-11 23:02

# HALLIBURTON

## Service Supervisor Reports

### Job Log

Date/Time	Chart #	Activity Code	Pump Rate	Cum Vol	Pump		Pressure (psig)	Comments
03/19/2011 18:30		Depart from Service Center or Other Site						
03/19/2011 19:30		Arrive At Loc						
03/19/2011 20:30		Safety Meeting - Pre Rig-Up						
03/19/2011 21:25		Test Lines						
03/19/2011 21:26		Pump Spacer	3	20			400.0	Pump Fresh Water
03/19/2011 21:32		Pump Spacer	4	24			395.0	Pump Mud Flush
03/19/2011 21:38		Pump Spacer	4	10			495.0	Pump Fresh Water
03/19/2011 21:42		Pump Cement	8	196.8			890.0	Mix and Pump 650 sks FracCem Cement @ 13.5 lb/gal
03/19/2011 22:09		Clean Lines		5				Wash Pumps and Lines to Pit
03/19/2011 22:10		Drop Top Plug						Shut-Down, Drop Top Plug
03/19/2011 22:11		Pump Displacement - Start	8	0			115.0	Pump Clayfix Water Displacement
03/19/2011 22:30		Pump Displacement - End	3	128			1470.0	Good Returns Throughout Job
03/19/2011 22:30		Bump Plug	3	128			2510.0	
03/19/2011 22:32		Check Floats						Floats Holding
03/19/2011 22:33		End Job						
03/19/2011 23:00		Safety Meeting - Pre Rig-Down						
03/19/2011 23:30		Safety Meeting - Departing Location						

# HALLIBURTON

## The Road to Excellence Starts with Safety

<b>Sold To #:</b> 359915		<b>Ship To #:</b> 2844031		<b>Quote #:</b>		<b>Sales Order #:</b> 8046500	
<b>Customer:</b> SYNERGY RESOURCES CORPORATION				<b>Customer Rep:</b> Libhart, Don			
<b>Well Name:</b> SRC Pratt			<b>Well #:</b> 14-29D			<b>API/UWI #:</b>	
<b>Field:</b> WATTENBERG		<b>City (SAP):</b> ERIE		<b>County/Parish:</b> Weld			<b>State:</b> Colorado
<b>Contractor:</b> Ensign			<b>Rig/Platform Name/Num:</b> 33				
<b>Job Purpose:</b> Cement Production Casing							
<b>Well Type:</b> Development Well			<b>Job Type:</b> Cement Production Casing				
<b>Sales Person:</b> FLING, MATTHEW			<b>Srvc Supervisor:</b> WHEELER, JUSTIN			<b>MBU ID Emp #:</b> 196470	

### Job Personnel

HES Emp Name	Exp Hrs	Emp #	HES Emp Name	Exp Hrs	Emp #	HES Emp Name	Exp Hrs	Emp #
BARNES, BRIAN L		485204	SNYDER, JONATHAN Leroy		435616	WHEELER, JUSTIN W		196470
WILEY, JAMES A		440080						

### Equipment

HES Unit #	Distance-1 way	HES Unit #	Distance-1 way	HES Unit #	Distance-1 way	HES Unit #	Distance-1 way
10857012C	20 mile	10866493C	20 mile	10948694	20 mile	10982754C	20 mile
11542778	20 mile	5707C	20 mile				

### Job Hours

Date	On Location Hours	Operating Hours	Date	On Location Hours	Operating Hours	Date	On Location Hours	Operating Hours
<b>TOTAL</b>	Total is the sum of each column separately							

Job				Job Times			
<b>Formation Name</b>				<b>Date</b>	<b>Time</b>	<b>Time Zone</b>	
<b>Formation Depth (MD)</b>	<b>Top</b>	<b>Bottom</b>		<b>Called Out</b>	19 - Mar - 2011	00:00	MST
<b>Form Type</b>	BHST			<b>On Location</b>	19 - Mar - 2011	19:30	MST
<b>Job depth MD</b>	8272. ft			<b>Job Started</b>	19 - Mar - 2011	21:25	MST
<b>Water Depth</b>	Wk Ht Above Floor			<b>Job Completed</b>	19 - Mar - 2011	22:33	MST
<b>Perforation Depth (MD)</b>	<b>From</b>	<b>To</b>		<b>Departed Loc</b>	19 - Mar - 2011	23:30	MST

### Well Data

Description	New / Used	Max pressure psig	Size in	ID in	Weight lbm/ft	Thread	Grade	Top MD ft	Bottom MD ft	Top TVD ft	Bottom TVD ft
Open Hole				7.875				941.	8292.	.	.
Production Casing	New		4.5	4.	11.6			.	8272.		
Surface Casing	New		8.625	8.097	24.		J-55	.	941.	.	.

### Sales/Rental/3<sup>rd</sup> Party (HES)

Description	Qty	Qty uom	Depth	Supplier
SHOE,FLT,4-1/2 8RD,2-3/4 SSII	1	EA		
CLR,FLT,4-1/2 8RD,9.5-13.5PPF,2-3/4	1	EA		
CENTRALIZER ASSY - API - 4-1/2 CSG X	30	EA		
CLAMP - LIMIT - 4-1/2 - HINGED -	1	EA		
KIT,HALL WELD-A	1	EA		
PLUG ASSY - 3W LATCHDOWN - 4-1/2 IN	1	EA		
Description	Qty	Qty uom	Depth	Supplier
BAFFLE ASSY - 4-1/2 8RD LATCHDOWN PLUG	1	EA		

### Tools and Accessories

# HALLIBURTON

Type	Size	Qty	Make	Depth	Type	Size	Qty	Make	Depth	Type	Size	Qty	Make
Guide Shoe					Packer					Top Plug			
Float Shoe					Bridge Plug					Bottom Plug			
Float Collar					Retainer					SSR plug set			
Insert Float										Plug Container			
Stage Tool										Centralizers			
<b>Miscellaneous Materials</b>													
Gelling Agt			Conc		Surfactant			Conc		Acid Type		Qty	Conc %
Treatment Fld			Conc		Inhibitor			Conc		Sand Type		Size	Qty
<b>Fluid Data</b>													
<b>Stage/Plug #: 1</b>													
Fluid #	Stage Type	Fluid Name			Qty	Qty uom	Mixing Density lbm/gal	Yield ft <sup>3</sup> /sk	Mix Fluid Gal/sk	Rate bbl/min	Total Mix Fluid Gal/sk		
1	Water Spacer					bbl	8.33	.0	.0	5.0			
2	MUD FLUSH III	MUD FLUSH III - SBM (528788)				bbl	8.4	.0	.0	5.0			
3	13.5# Fracem	FRACCEM (TM) SYSTEM (452963)				sacks	13.5	1.7	8.16	5.0	8.16		
8.16 Gal		FRESH WATER											
4	ClaFix III Water Displacement					Gal	8.33	.0	.0	7.0			
<b>Calculated Values</b>			<b>Pressures</b>			<b>Volumes</b>							
Displacement			Shut In: Instant			Lost Returns		Cement Slurry		Pad			
Top Of Cement			5 Min			Cement Returns		Actual Displacement		Treatment			
Frac Gradient			15 Min			Spacers		Load and Breakdown		Total Job			
<b>Rates</b>													
Circulating			Mixing			Displacement			Avg. Job				
Cement Left In Pipe	Amount	14 ft	Reason		Shoe Joint								
Frac Ring # 1 @	ID		Frac ring # 2 @	ID		Frac Ring # 3 @	ID		Frac Ring # 4 @	ID			
The Information Stated Herein Is Correct						Customer Representative Signature							