

ANADARKO E&P COMPANY LP

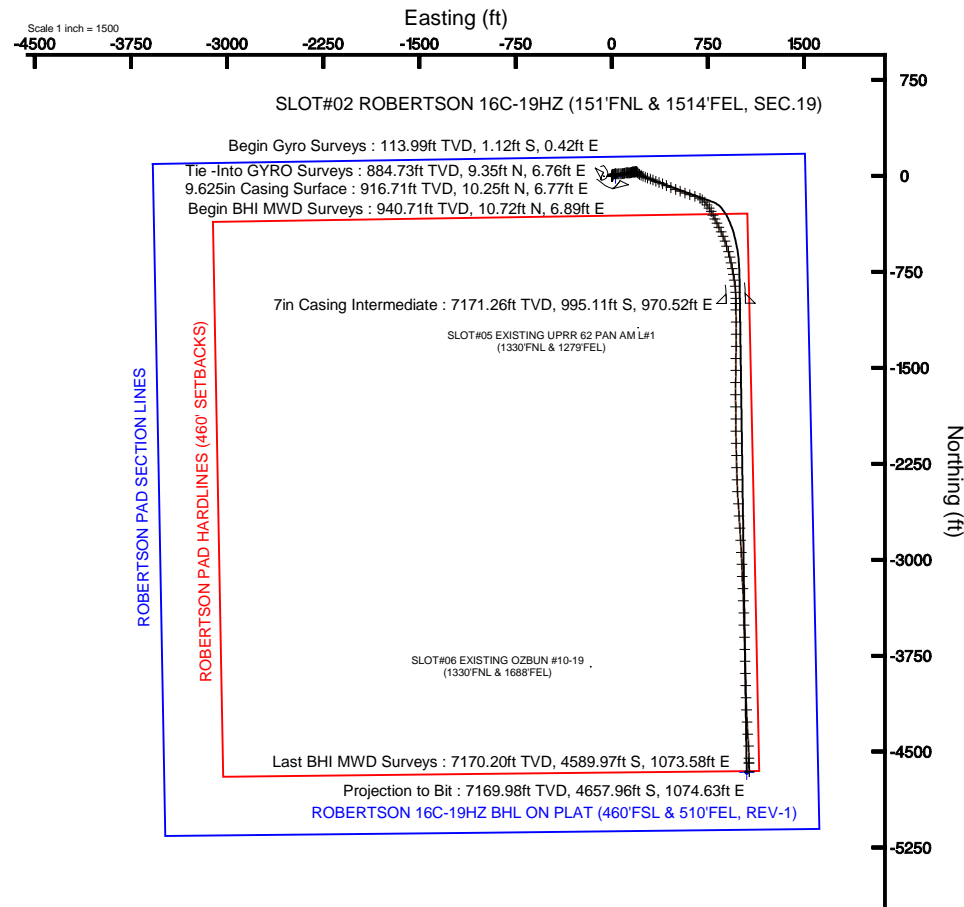
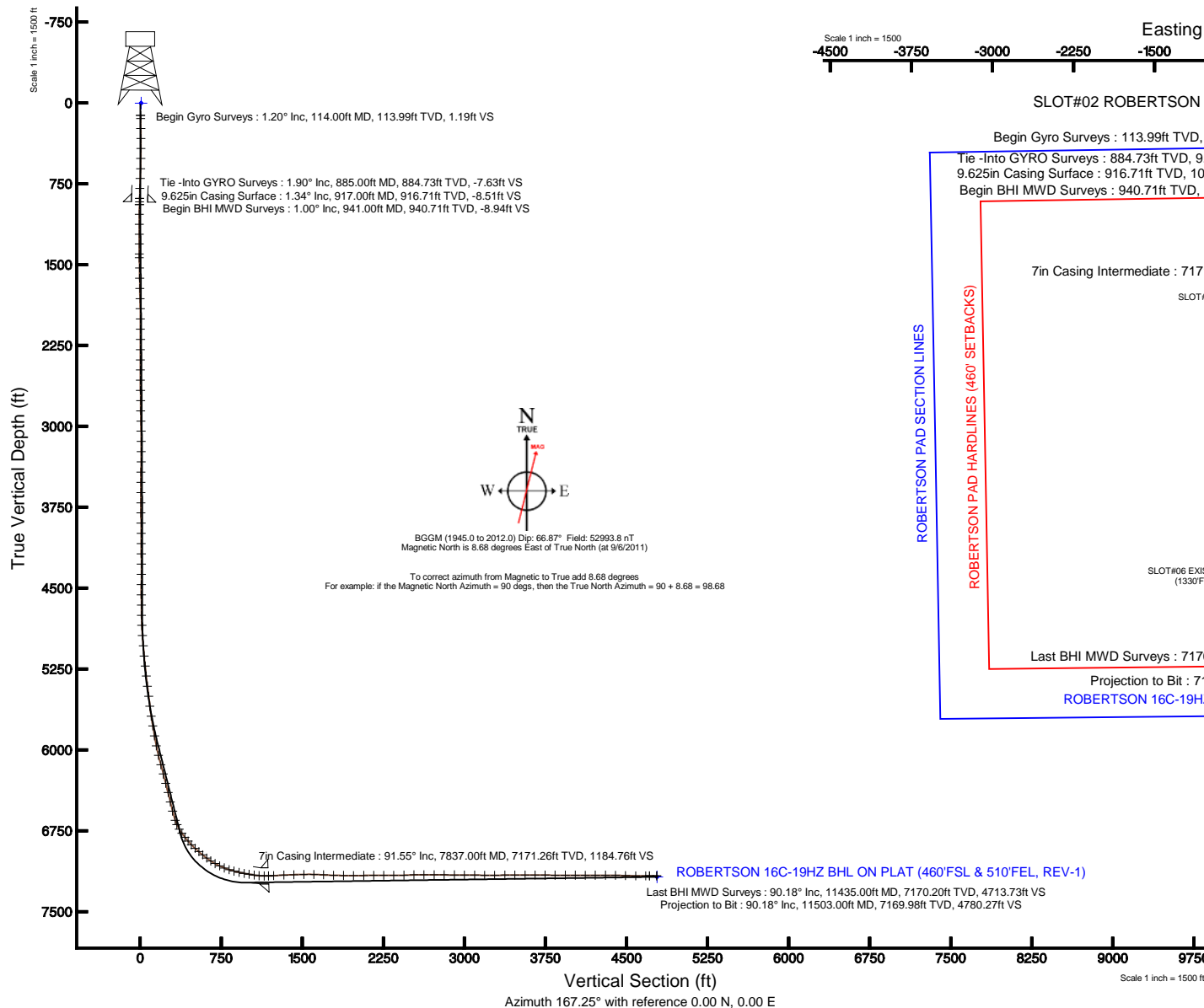
Location: COLORADO Slot: SLOT#02 ROBERTSON 16C-19HZ (151°FNL & 1514°FEL, SEC.19)
 Field: WELD COUNTY (KERR MCGEE) Well: ROBERTSON 16C-19HZ
 Facility: SEC.19-T2N-R64W Wellbore: ROBERTSON 16C-19HZ PWB

Plot reference wellpath is ROBERTSON 16C-19HZ (REV-C.0) PWP

True vertical depths are referenced to XTREME 6 (RKB)	Grid System: NAD83 / Lambert Colorado SP, Northern Zone (501), US feet
Measured depths are referenced to XTREME 6 (RKB)	North Reference: True north
XTREME 6 (RKB) to Mean Sea Level: 4952 feet	Scale: True distance
Mean Sea Level to Mud line (At Slot: SLOT#02 ROBERTSON 16C-19HZ (151°FNL & 1514°FEL, SEC.19)): 0 feet	Depths are in feet
Coordinates are in feet referenced to Slot	Created by: wllajef02 on 1/5/2012



PvA





Actual Wellpath Report

ROBERTSON 16C-19HZ AWP

Page 1 of 5



REFERENCE WELLPATH IDENTIFICATION

Operator	ANADARKO E&P COMPANY LP	Slot	SLOT#02 ROBERTSON 16C-19HZ (151'FNL & 1514'FEL, SEC.19)
Area	COLORADO	Well	ROBERTSON 16C-19HZ
Field	WELD COUNTY (KERR MCGEE)	Wellbore	ROBERTSON 16C-19HZ AWB
Facility	SEC.19-T2N-R64W		

REPORT SETUP INFORMATION

Projection System	NAD83 / Lambert Colorado SP, Northern Zone (501), US feet	Software System	WellArchitect® 3.0.0
North Reference	True	User	Wilsjef02
Scale	0.999959	Report Generated	1/6/2012 at 9:03:49 AM
Convergence at slot	0.59° East	Database/Source file	WA_ANADARKO/ROBERTSON_16C-19HZ_AWB.xml

WELLPATH LOCATION

	Local coordinates		Grid coordinates		Geographic coordinates	
	North[ft]	East[ft]	Easting[US ft]	Northing[US ft]	Latitude	Longitude
Slot Location	-0.20	-30.09	3254413.21	1291784.89	40°07'50.736"N	104°35'24.428"W
Facility Reference Pt			3254443.30	1291785.40	40°07'50.738"N	104°35'24.041"W
Field Reference Pt			3197771.84	1268891.29	40°04'09.600"N	104°47'36.000"W

WELLPATH DATUM

Calculation method	Minimum curvature	XTREME 6 (RKB) to Facility Vertical Datum	4952.00ft
Horizontal Reference Pt	Slot	XTREME 6 (RKB) to Mean Sea Level	4952.00ft
Vertical Reference Pt	XTREME 6 (RKB)	XTREME 6 (RKB) to Mud Line at Slot (SLOT#02 ROBERTSON 16C-19HZ (151'FNL & 1514'FEL, SEC.19))	4952.00ft
MD Reference Pt	XTREME 6 (RKB)	Section Origin	N 0.00, E 0.00 ft
Field Vertical Reference	Mean Sea Level	Section Azimuth	167.25°



Actual Wellpath Report

ROBERTSON 16C-19HZ AWP

Page 2 of 5



REFERENCE WELLPATH IDENTIFICATION

Operator	ANADARKO E&P COMPANY LP	Slot	SLOT#02 ROBERTSON 16C-19HZ (151'FNL & 1514'FEL, SEC.19)
Area	COLORADO	Well	ROBERTSON 16C-19HZ
Field	WELD COUNTY (KERR MCGEE)	Wellbore	ROBERTSON 16C-19HZ AWB
Facility	SEC.19-T2N-R64W		

WELLPATH DATA (127 stations)

MD [ft]	Inclination [°]	Azimuth [°]	TVD [ft]	Vert Sect [ft]	North [ft]	East [ft]	Latitude	Longitude	DLS [°/100ft]	Comments
885.00	1.900	355.610	884.73	-7.63	9.35	6.76	40°07'50.828"N	104°35'24.341"W	0.14	Tie -Into GYRO Surveys
941.00	1.000	24.170	940.71	-8.94	10.72	6.89	40°07'50.842"N	104°35'24.340"W	2.01	Begin BHI MWD Surveys
1033.00	1.600	62.830	1032.69	-9.90	12.04	8.36	40°07'50.855"N	104°35'24.321"W	1.12	
1126.00	3.030	67.270	1125.61	-10.65	13.59	11.78	40°07'50.870"N	104°35'24.277"W	1.55	
1218.00	3.920	76.240	1217.44	-11.13	15.27	17.08	40°07'50.887"N	104°35'24.209"W	1.13	
1309.00	4.160	78.920	1308.21	-11.09	16.65	23.34	40°07'50.901"N	104°35'24.128"W	0.34	
1401.00	4.310	87.470	1399.96	-10.38	17.44	30.07	40°07'50.908"N	104°35'24.041"W	0.70	
1437.00	3.910	88.140	1435.87	-9.90	17.54	32.65	40°07'50.909"N	104°35'24.008"W	1.12	
1532.00	5.000	90.240	1530.58	-8.36	17.63	40.02	40°07'50.910"N	104°35'23.913"W	1.16	
1627.00	4.650	85.430	1625.25	-6.88	17.92	48.00	40°07'50.913"N	104°35'23.810"W	0.56	
1722.00	5.500	88.850	1719.87	-5.42	18.32	56.39	40°07'50.917"N	104°35'23.702"W	0.95	
1817.00	5.280	90.420	1814.45	-3.51	18.38	65.32	40°07'50.918"N	104°35'23.587"W	0.28	
1912.00	4.580	91.610	1909.10	-1.57	18.24	73.48	40°07'50.916"N	104°35'23.482"W	0.74	
2007.00	3.980	83.950	2003.84	-0.25	18.48	80.55	40°07'50.919"N	104°35'23.391"W	0.87	
2101.00	3.270	85.560	2097.65	0.52	19.03	86.47	40°07'50.924"N	104°35'23.315"W	0.76	
2196.00	2.890	71.520	2192.51	0.67	20.00	91.44	40°07'50.934"N	104°35'23.251"W	0.89	
2291.00	3.160	74.960	2287.38	0.33	21.44	96.24	40°07'50.948"N	104°35'23.189"W	0.34	
2386.00	3.170	76.100	2382.23	0.17	22.75	101.32	40°07'50.961"N	104°35'23.124"W	0.07	
2481.00	3.770	77.390	2477.06	0.13	24.06	106.92	40°07'50.974"N	104°35'23.052"W	0.64	
2576.00	3.170	78.860	2571.88	0.21	25.25	112.54	40°07'50.986"N	104°35'22.980"W	0.64	
2671.00	3.310	87.010	2666.73	0.75	25.90	117.86	40°07'50.992"N	104°35'22.911"W	0.51	
2766.00	2.950	88.880	2761.59	1.71	26.09	123.04	40°07'50.994"N	104°35'22.844"W	0.39	
2861.00	3.070	93.290	2856.46	2.90	25.99	128.02	40°07'50.993"N	104°35'22.780"W	0.27	
2955.00	3.850	95.160	2950.29	4.57	25.56	133.68	40°07'50.989"N	104°35'22.707"W	0.84	
3050.00	3.460	86.930	3045.10	6.03	25.43	139.72	40°07'50.987"N	104°35'22.630"W	0.69	
3145.00	2.970	83.780	3139.95	6.79	25.85	145.03	40°07'50.991"N	104°35'22.561"W	0.55	
3239.00	2.440	75.550	3233.84	7.01	26.61	149.39	40°07'50.999"N	104°35'22.505"W	0.70	
3334.00	2.250	60.940	3328.76	6.43	28.03	152.97	40°07'51.013"N	104°35'22.459"W	0.66	
3429.00	2.080	64.880	3423.69	5.53	29.66	156.17	40°07'51.029"N	104°35'22.418"W	0.24	
3524.00	2.720	66.550	3518.61	4.74	31.29	159.79	40°07'51.045"N	104°35'22.371"W	0.68	
3619.00	2.420	83.110	3613.52	4.53	32.43	163.85	40°07'51.056"N	104°35'22.319"W	0.84	
3714.00	1.800	75.280	3708.45	4.68	33.05	167.29	40°07'51.063"N	104°35'22.275"W	0.72	
3809.00	2.280	96.450	3803.39	5.25	33.22	170.61	40°07'51.064"N	104°35'22.232"W	0.93	
3903.00	2.010	88.730	3897.33	6.20	33.04	174.11	40°07'51.063"N	104°35'22.187"W	0.42	
3998.00	1.660	86.840	3992.28	6.76	33.16	177.15	40°07'51.064"N	104°35'22.148"W	0.37	
4093.00	1.390	99.210	4087.24	7.42	33.05	179.67	40°07'51.063"N	104°35'22.115"W	0.45	
4188.00	1.460	93.960	4182.22	8.20	32.78	182.01	40°07'51.060"N	104°35'22.085"W	0.16	
4283.00	1.410	78.060	4277.19	8.56	32.94	184.36	40°07'51.061"N	104°35'22.055"W	0.42	
4378.00	1.150	77.440	4372.16	8.58	33.39	186.44	40°07'51.066"N	104°35'22.028"W	0.27	
4473.00	1.290	59.830	4467.14	8.26	34.13	188.29	40°07'51.073"N	104°35'22.004"W	0.42	
4568.00	1.220	90.400	4562.12	8.17	34.66	190.23	40°07'51.079"N	104°35'21.979"W	0.70	
4663.00	1.290	96.670	4657.10	8.76	34.53	192.30	40°07'51.077"N	104°35'21.953"W	0.16	
4758.00	2.180	109.650	4752.05	10.08	33.80	195.06	40°07'51.070"N	104°35'21.917"W	1.02	
4853.00	3.030	132.560	4846.96	13.12	31.49	198.61	40°07'51.047"N	104°35'21.871"W	1.40	
4948.00	4.720	135.650	4941.74	18.51	27.00	203.20	40°07'51.003"N	104°35'21.812"W	1.79	
5043.00	6.150	138.350	5036.31	26.29	20.40	209.31	40°07'50.938"N	104°35'21.734"W	1.53	
5138.00	7.210	119.590	5130.67	34.77	13.65	217.88	40°07'50.871"N	104°35'21.623"W	2.54	
5233.00	10.140	116.550	5224.57	44.08	6.97	230.55	40°07'50.805"N	104°35'21.460"W	3.12	
5327.00	10.540	111.420	5317.05	54.15	0.13	245.95	40°07'50.737"N	104°35'21.262"W	1.07	
5422.00	11.530	113.550	5410.29	64.65	-6.83	262.74	40°07'50.668"N	104°35'21.046"W	1.13	
5517.00	13.300	111.380	5503.07	76.40	-14.61	281.62	40°07'50.592"N	104°35'20.803"W	1.93	
5612.00	13.130	107.320	5595.55	87.94	-21.81	302.10	40°07'50.520"N	104°35'20.539"W	0.99	
5707.00	14.000	114.430	5687.91	100.29	-29.77	322.87	40°07'50.442"N	104°35'20.272"W	1.98	
5802.00	15.930	114.470	5779.68	115.12	-39.93	345.20	40°07'50.341"N	104°35'19.984"W	2.03	
5897.00	16.790	110.290	5870.84	130.49	-50.09	369.93	40°07'50.241"N	104°35'19.666"W	1.53	
5994.00	18.450	113.190	5963.29	147.14	-60.99	397.19	40°07'50.133"N	104°35'19.315"W	1.94	
6089.00	22.630	112.940	6052.23	166.63	-74.04	427.85	40°07'50.004"N	104°35'18.920"W	4.40	
6184.00	24.910	112.910	6139.16	188.96	-88.95	463.11	40°07'49.857"N	104°35'18.466"W	2.40	
6279.00	24.130	112.680	6225.60	211.88	-104.23	499.46	40°07'49.706"N	104°35'17.998"W	0.83	
6374.00	24.930	110.370	6312.02	234.08	-118.69	536.15	40°07'49.563"N	104°35'17.526"W	1.31	



Actual Wellpath Report

ROBERTSON 16C-19HZ AWP

Page 3 of 5



REFERENCE WELLPATH IDENTIFICATION

Operator	ANADARKO E&P COMPANY LP	Slot	SLOT#02 ROBERTSON 16C-19HZ (151'FNL & 1514'FEL, SEC.19)
Area	COLORADO	Well	ROBERTSON 16C-19HZ
Field	WELD COUNTY (KERR MCGEE)	Wellbore	ROBERTSON 16C-19HZ AWB
Facility	SEC.19-T2N-R64W		

WELLPATH DATA (127 stations) † = interpolated/extrapolated station

MD [ft]	Inclination [°]	Azimuth [°]	TVD [ft]	Vert Sect [ft]	North [ft]	East [ft]	Latitude	Longitude	DLS [°/100ft]	Comments
6469.00	25.160	110.950	6398.09	256.23	-132.88	573.78	40°07'49.423"N	104°35'17.041"W	0.35	
6564.00	24.810	107.670	6484.20	277.52	-146.15	611.63	40°07'49.292"N	104°35'16.554"W	1.50	
6659.00	25.910	106.820	6570.05	297.86	-158.20	650.49	40°07'49.173"N	104°35'16.054"W	1.22	
6754.00	27.060	117.120	6655.12	321.97	-174.07	689.61	40°07'49.016"N	104°35'15.550"W	4.98	
6801.00	30.570	127.350	6696.32	338.00	-186.20	708.65	40°07'48.896"N	104°35'15.305"W	12.85	
6849.00	35.170	137.300	6736.66	359.37	-203.79	727.75	40°07'48.722"N	104°35'15.059"W	14.75	
6896.00	38.170	145.260	6774.37	384.59	-225.69	745.22	40°07'48.506"N	104°35'14.834"W	11.95	
6944.00	38.370	147.000	6812.06	412.32	-250.37	761.79	40°07'48.262"N	104°35'14.621"W	2.28	
6991.00	41.680	151.910	6848.05	441.09	-276.41	777.10	40°07'48.004"N	104°35'14.424"W	9.73	
7038.00	44.790	153.470	6882.29	472.25	-305.02	791.85	40°07'47.722"N	104°35'14.234"W	7.00	
7085.00	48.550	154.470	6914.54	505.52	-335.73	806.85	40°07'47.418"N	104°35'14.041"W	8.15	
7133.00	49.270	154.120	6946.08	540.77	-368.33	822.54	40°07'47.096"N	104°35'13.839"W	1.60	
7180.00	51.140	153.330	6976.16	575.88	-400.71	838.53	40°07'46.776"N	104°35'13.633"W	4.18	
7228.00	53.640	154.790	7005.46	612.90	-434.90	855.15	40°07'46.438"N	104°35'13.419"W	5.74	
7275.00	58.020	158.500	7031.85	651.11	-470.59	870.53	40°07'46.085"N	104°35'13.221"W	11.38	
7323.00	60.370	160.040	7056.44	691.93	-509.15	885.11	40°07'45.704"N	104°35'13.034"W	5.62	
7370.00	65.230	161.610	7077.91	733.46	-548.63	898.83	40°07'45.314"N	104°35'12.857"W	10.76	
7418.00	68.110	162.580	7096.92	777.35	-590.56	912.37	40°07'44.900"N	104°35'12.683"W	6.28	
7465.00	72.090	166.870	7112.92	821.48	-633.18	923.99	40°07'44.479"N	104°35'12.533"W	12.06	
7513.00	74.490	168.720	7126.72	867.45	-678.11	933.70	40°07'44.035"N	104°35'12.408"W	6.21	
7560.00	77.770	169.460	7137.99	913.05	-722.91	942.33	40°07'43.592"N	104°35'12.297"W	7.14	
7608.00	79.450	170.010	7147.47	960.05	-769.21	950.72	40°07'43.134"N	104°35'12.189"W	3.68	
7655.00	80.450	169.910	7155.67	1006.28	-814.78	958.79	40°07'42.684"N	104°35'12.085"W	2.14	
7703.00	81.350	174.600	7163.27	1053.48	-861.73	965.17	40°07'42.220"N	104°35'12.003"W	9.83	
7750.00	84.230	177.320	7169.17	1099.56	-908.23	968.45	40°07'41.761"N	104°35'11.961"W	8.40	
7798.00	89.720	179.130	7171.70	1146.60	-956.12	969.93	40°07'41.287"N	104°35'11.942"W	12.04	
7837.00†	91.553	179.143	7171.26	1184.76	-995.11	970.52	40°07'40.902"N	104°35'11.934"W	4.70	7" Casing Point
7888.00	93.950	179.160	7168.82	1234.60	-1046.04	971.27	40°07'40.399"N	104°35'11.925"W	4.70	
7983.00	92.670	179.700	7163.33	1327.30	-1140.88	972.22	40°07'39.462"N	104°35'11.912"W	1.46	
8078.00	91.660	180.150	7159.74	1419.92	-1235.81	972.34	40°07'38.523"N	104°35'11.911"W	1.16	
8173.00	91.380	180.060	7157.22	1512.51	-1330.77	972.17	40°07'37.585"N	104°35'11.913"W	0.31	
8268.00	88.450	180.830	7157.36	1604.99	-1425.76	971.43	40°07'36.646"N	104°35'11.923"W	3.19	
8362.00	86.850	180.660	7161.22	1696.32	-1519.67	970.21	40°07'35.718"N	104°35'11.938"W	1.71	
8457.00	88.120	180.710	7165.39	1788.62	-1614.57	969.07	40°07'34.780"N	104°35'11.953"W	1.34	
8552.00	89.780	179.870	7167.13	1881.16	-1709.55	968.59	40°07'33.842"N	104°35'11.959"W	1.96	
8647.00	89.630	179.120	7167.62	1973.99	-1804.54	969.43	40°07'32.903"N	104°35'11.949"W	0.81	
8742.00	91.140	179.790	7166.98	2066.84	-1899.53	970.33	40°07'31.964"N	104°35'11.937"W	1.74	
8837.00	89.910	179.290	7166.11	2159.66	-1994.52	971.10	40°07'31.026"N	104°35'11.927"W	1.40	
8932.00	89.750	179.020	7166.39	2252.61	-2089.51	972.50	40°07'30.087"N	104°35'11.909"W	0.33	
9027.00	90.400	178.620	7166.26	2345.68	-2184.49	974.45	40°07'29.148"N	104°35'11.884"W	0.80	
9122.00	91.600	178.590	7164.61	2438.81	-2279.45	976.77	40°07'28.210"N	104°35'11.854"W	1.26	
9217.00	91.990	178.090	7161.63	2531.99	-2374.36	979.52	40°07'27.272"N	104°35'11.819"W	0.67	
9312.00	90.060	176.760	7159.93	2625.47	-2469.24	983.78	40°07'26.334"N	104°35'11.764"W	2.47	
9407.00	88.980	175.760	7160.73	2719.29	-2564.03	989.98	40°07'25.398"N	104°35'11.684"W	1.55	
9502.00	89.780	176.840	7161.76	2813.10	-2658.83	996.11	40°07'24.461"N	104°35'11.606"W	1.41	
9596.00	89.960	176.360	7161.97	2905.85	-2752.66	1001.69	40°07'23.534"N	104°35'11.534"W	0.55	
9691.00	89.560	177.110	7162.37	2999.55	-2847.51	1007.10	40°07'22.596"N	104°35'11.464"W	0.89	
9786.00	89.260	176.590	7163.35	3093.22	-2942.36	1012.32	40°07'21.659"N	104°35'11.397"W	0.63	
9881.00	88.670	177.660	7165.06	3186.79	-3037.22	1017.08	40°07'20.722"N	104°35'11.336"W	1.29	
9976.00	90.770	177.830	7165.53	3280.20	-3132.14	1020.82	40°07'19.784"N	104°35'11.288"W	2.22	
10071.00	91.130	177.160	7163.95	3373.67	-3227.04	1024.97	40°07'18.846"N	104°35'11.234"W	0.80	
10166.00	90.030	177.670	7162.99	3467.17	-3321.93	1029.25	40°07'17.908"N	104°35'11.179"W	1.28	
10261.00	89.750	178.930	7163.17	3560.41	-3416.89	1032.07	40°07'16.970"N	104°35'11.143"W	1.36	
10355.00	89.560	178.310	7163.74	3652.56	-3510.86	1034.34	40°07'16.041"N	104°35'11.114"W	0.69	
10450.00	89.870	177.660	7164.21	3745.90	-3605.80	1037.68	40°07'15.103"N	104°35'11.071"W	0.76	
10545.00	89.960	178.510	7164.35	3839.20	-3700.75	1040.85	40°07'14.165"N	104°35'11.030"W	0.90	
10640.00	90.030	178.180	7164.36	3932.43	-3795.71	1043.59	40°07'13.226"N	104°35'10.995"W	0.36	
10735.00	89.810	179.290	7164.49	4025.53	-3890.68	1045.69	40°07'12.288"N	104°35'10.968"W	1.19	
10830.00	89.970	178.710	7164.67	4118.53	-3985.67	1047.35	40°07'11.349"N	104°35'10.947"W	0.63	
10925.00	90.060	178.060	7164.65	4211.75	-4080.63	1050.03	40°07'10.411"N	104°35'10.912"W	0.69	



Actual Wellpath Report

ROBERTSON 16C-19HZ AWP

Page 4 of 5



REFERENCE WELLPATH IDENTIFICATION

Operator	ANADARKO E&P COMPANY LP	Slot	SLOT#02 ROBERTSON 16C-19HZ (151'FNL & 1514'FEL, SEC.19)
Area	COLORADO	Well	ROBERTSON 16C-19HZ
Field	WELD COUNTY (KERR MCGEE)	Wellbore	ROBERTSON 16C-19HZ AWB
Facility	SEC.19-T2N-R64W		

WELLPATH DATA (127 stations)

MD [ft]	Inclination [°]	Azimuth [°]	TVD [ft]	Vert Sect [ft]	North [ft]	East [ft]	Latitude	Longitude	DLS [°/100ft]	Comments
11020.00	90.120	177.360	7164.50	4305.17	-4175.55	1053.82	40°07'09.473"N	104°35'10.864"W	0.74	
11114.00	88.730	177.260	7165.44	4397.71	-4269.44	1058.23	40°07'08.545"N	104°35'10.807"W	1.48	
11209.00	88.090	176.160	7168.08	4491.38	-4364.25	1063.68	40°07'07.608"N	104°35'10.737"W	1.34	
11304.00	89.540	176.850	7170.04	4585.12	-4459.05	1069.47	40°07'06.671"N	104°35'10.662"W	1.69	
11399.00	90.150	178.930	7170.30	4678.49	-4553.97	1072.97	40°07'05.733"N	104°35'10.617"W	2.28	
11435.00	90.180	179.120	7170.20	4713.73	-4589.97	1073.58	40°07'05.377"N	104°35'10.609"W	0.53	Last BHI MWD Surveys
11503.00	90.180	179.120	7169.98	4780.27	-4657.96	1074.63	40°07'04.705"N	104°35'10.596"W	0.00	Projection to Bit

HOLE & CASING SECTIONS - Ref Wellbore: ROBERTSON 16C-19HZ AWB Ref Wellpath: ROBERTSON 16C-19HZ AWP

String/Diameter	Start MD [ft]	End MD [ft]	Interval [ft]	Start TVD [ft]	End TVD [ft]	Start N/S [ft]	Start E/W [ft]	End N/S [ft]	End E/W [ft]
12.25in Open Hole	16.00	917.00	901.00	16.00	916.71	-1.12	0.42	10.25	6.77
9.625in Casing Surface	16.00	917.00	901.00	16.00	916.71	-1.12	0.42	10.25	6.77
8.75in Open Hole	917.00	7847.00	6930.00	916.71	7170.95	10.25	6.77	-1005.10	970.67
7in Casing Intermediate	16.00	7837.00	7821.00	16.00	7171.26	-1.12	0.42	-995.11	970.52
6.125in Open Hole	7837.00	11503.00	3666.00	7171.26	7169.98	-995.11	970.52	-4657.96	1074.63

TARGETS

Name	MD [ft]	TVD [ft]	North [ft]	East [ft]	Grid East [US ft]	Grid North [US ft]	Latitude	Longitude	Shape
ROBERTSON PAD SECTION LINES		0.00	0.36	30.20	3254443.40	1291785.56	40°07'50.740"N	104°35'24.040"W	polygon
ROBERTSON PAD HARDLINES (460' SETBACKS)		6935.00	0.36	30.20	3254443.40	1291785.56	40°07'50.740"N	104°35'24.040"W	polygon
ROBERTSON 16C-19HZ BHL ON PLAT (460'FSL & 510'FEL, REV-1)		7180.00	-4663.66	1055.21	3255516.17	1287132.50	40°07'04.649"N	104°35'10.846"W	point

WELLPATH COMPOSITION - Ref Wellbore: ROBERTSON 16C-19HZ AWB Ref Wellpath: ROBERTSON 16C-19HZ AWP

Start MD [ft]	End MD [ft]	Positional Uncertainty Model	Log Name/Comment	Wellbore
114.00	885.00	Gyrodata standard - Continuous gyro	GYRODATA SURVEYS <114-885>	ROBERTSON 16C-19HZ AWB
885.00	7798.00	NaviTrak (Standard)	BHI MWD SURVEY 8 3/4" HOLE <941-7798>	ROBERTSON 16C-19HZ AWB
7798.00	11435.00	NaviTrak (Standard)	BHI MWD SURVEYS 6 1/8" HOLE <7888-11435>	ROBERTSON 16C-19HZ AWB
11435.00	11503.00	Blind Drilling (std)	Projection to bit	ROBERTSON 16C-19HZ AWB



Actual Wellpath Report

ROBERTSON 16C-19HZ AWP

Page 5 of 5



REFERENCE WELLPATH IDENTIFICATION

Operator	ANADARKO E&P COMPANY LP	Slot	SLOT#02 ROBERTSON 16C-19HZ (151'FNL & 1514'FEL, SEC.19)
Area	COLORADO	Well	ROBERTSON 16C-19HZ
Field	WELD COUNTY (KERR MCGEE)	Wellbore	ROBERTSON 16C-19HZ AWB
Facility	SEC.19-T2N-R64W		

WELLPATH COMMENTS

MD [ft]	Inclination [°]	Azimuth [°]	TVD [ft]	Comment
114.00	1.200	159.510	113.99	Begin Gyro Surveys
885.00	1.900	355.610	884.73	Tie -Into GYRO Surveys
941.00	1.000	24.170	940.71	Begin BHI MWD Surveys
7837.00	91.553	179.143	7171.26	7" Casing Point
11435.00	90.180	179.120	7170.20	Last BHI MWD Surveys
11503.00	90.180	179.120	7169.98	Projection to Bit