

Test-A-Log Co.

OPERATOR: WIEPKING - FULLERTON ENERGY LLC
WELL NAME: KHUAI 2

TEST NO: 2
TICKET NO: 2884

Contractor Murfin Drilling
Rig No. 25
Spot SW/NE
Sec 6
Twp 10 S
Rng 55 W
Field Great Plains
County Lincoln
State Colorado
Elevation 5275' KB - 5265' GL
Formation Cherokee "A"

Surface Choke 1"
Bottom Choke 5/8"
Hole Size 7 7/8"
Core Hole Size
DP Size & Wt 4 1/2" 16.60
Wt Pipe
ID of DC 2 3/8"
Length of DC 542'
Total Depth 7246'
Type of Test Open Hole Dst
Interval 7212'- 7246'

Mud Type Chemical/Gel
Weight 8.9
Viscosity 71
Water Loss 6.4
Filter Cake
RW 1.5 @ 78 Deg F
Chlorides 3,409 Ppm

Co. Rep. Gregg Smith
Tester Mark Green

Pipe Recovery:

180' Slightly gas cut mud = 0.99 bbl.

Surface blow:

1st Flow: Began with a 1/2" blow, increased to bottom of bucket at 7 minutes and remained thru flow period.

2nd Flow: Began with a 14.0 oz blow, decreased to 7.0 oz at 15 minutes, 6.0 oz at 30 minutes and remained thru flow period.

Properties:

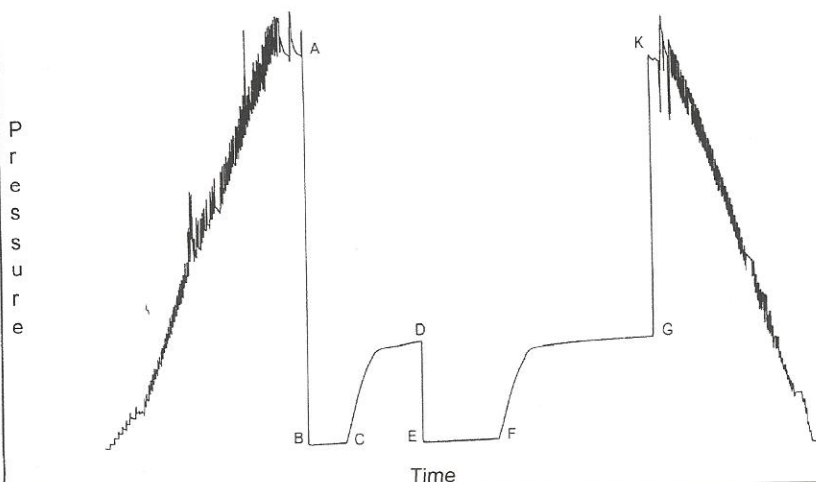
Downhole Sampler:

Pressure in Sampler 690 psig
Volume of Sampler 1850 cc
Volume of Sample 1700 cc
Oil: — cc
Water: 0 cc
Mud: Oil & Gas Cut 1700 cc
Gas: — cu ft
Other: 0
Rw:
Chlorides:
Gas/Oil Ratio
Gravity API @ 60 Deg F

Opened Tool @ 13:24 hrs on 10/04/2011

	Reported	Corrected	
Flow 1	30	29	min
Shut-in 1	60	59	min
Flow 2	60	59	min
Shut-in 2	120	120	min

Downhole Pressure Chart



Downhole Pressure Data

Recorder Type JMCO Memory Recorder
No. 30024 Cap 10000 psi
Depth 7192 ft.
Inside X Outside
Psi(a) Deg (f)

Initial Hydrostatic	[A]	3306	
Final Hydrostatic	[K]	3200	
Initial Flow 1	[B]	38	163
Final Flow 1	[C]	53	166
Initial Flow 2	[E]	49	168
Final Flow 2	[F]	71	171
Shut-in 1	[D]	929	169
Shut-in 2	[G]	945	175
Maximum Temperature			175

WELL NAME: KHUAI 2
OPERATOR: WIEPKING - FULLERTON ENERGY LLC

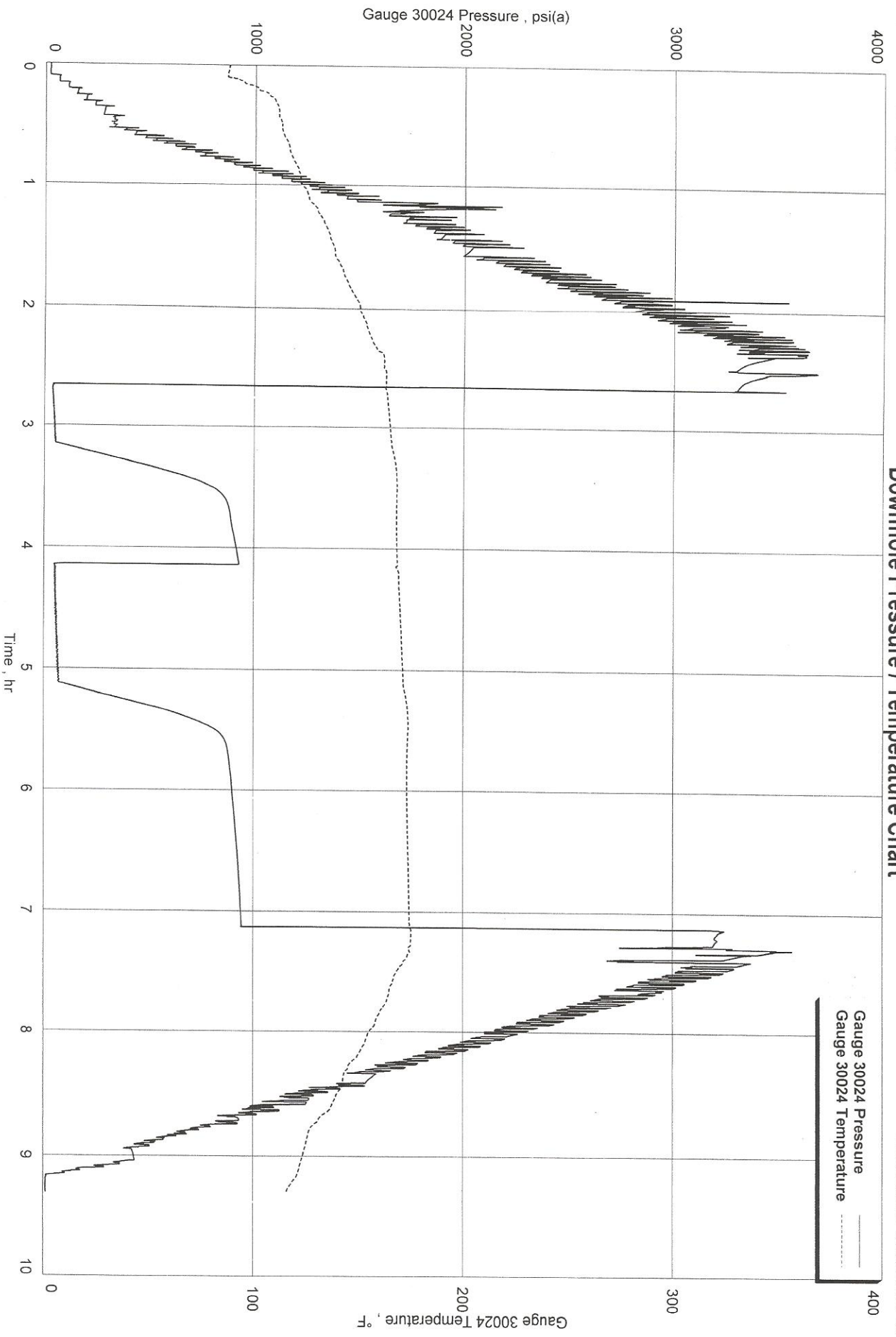
FORMATION: CHEROKEE "A"
INTERVAL: 7212- 7246'

TEST NO: 2
DATE: 10/04/2011



Downhole Pressure / Temperature Chart

Khui 2, Dst 2
Formation: Cherokee "A"



Wiepking - Fullerton Energy LLC
Interval: 7212' - 7246'

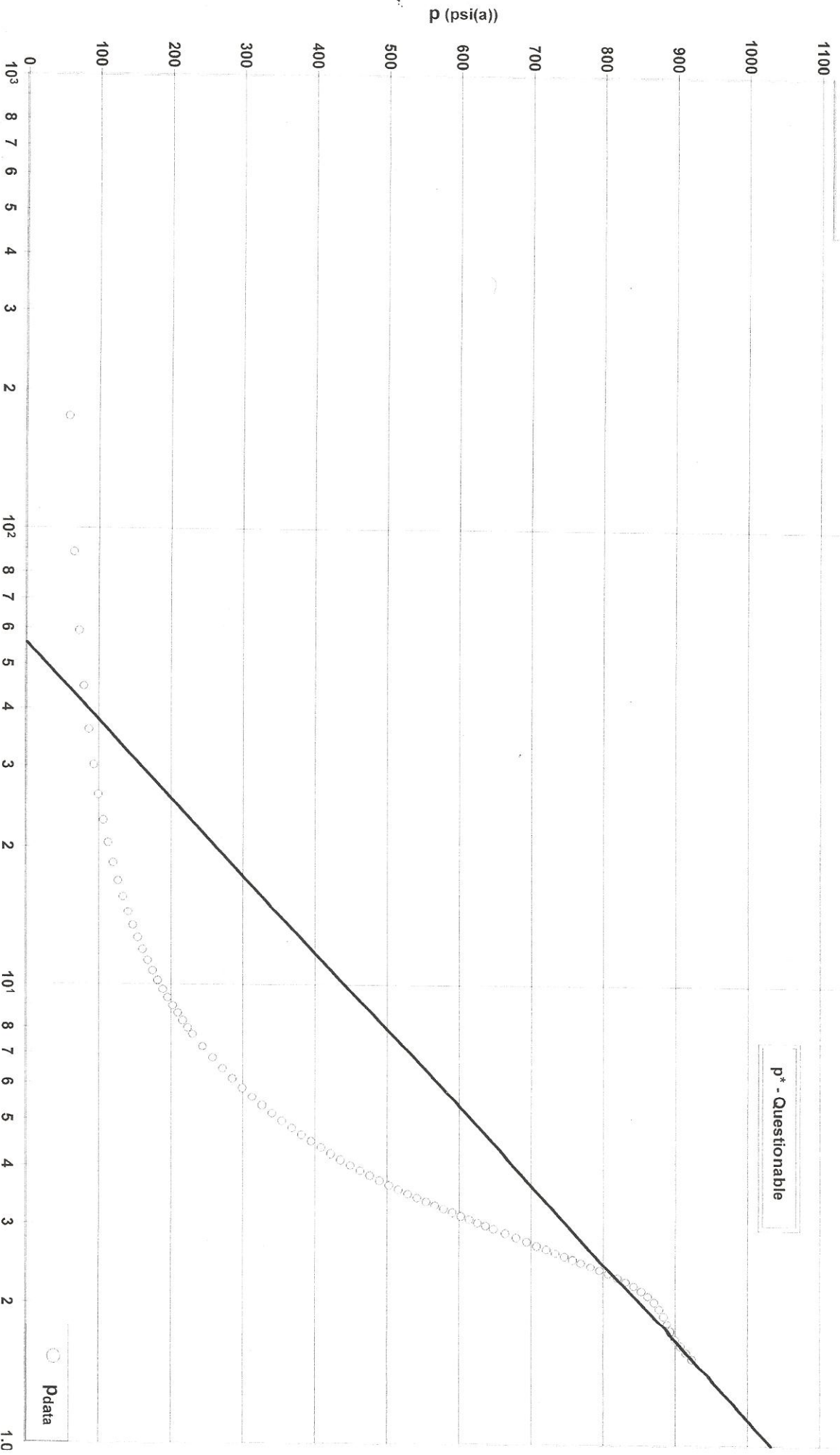
Diagnostic Plot - Shut In 1

Radial

Khua1 2, Dst 2
Formation: Cherokee "A"

Radial Solution
p* 1032.0 psi(a)

p* - Questionable



Wiepking - Fullerton Energy LLC
Interval: 7212' - 7246'

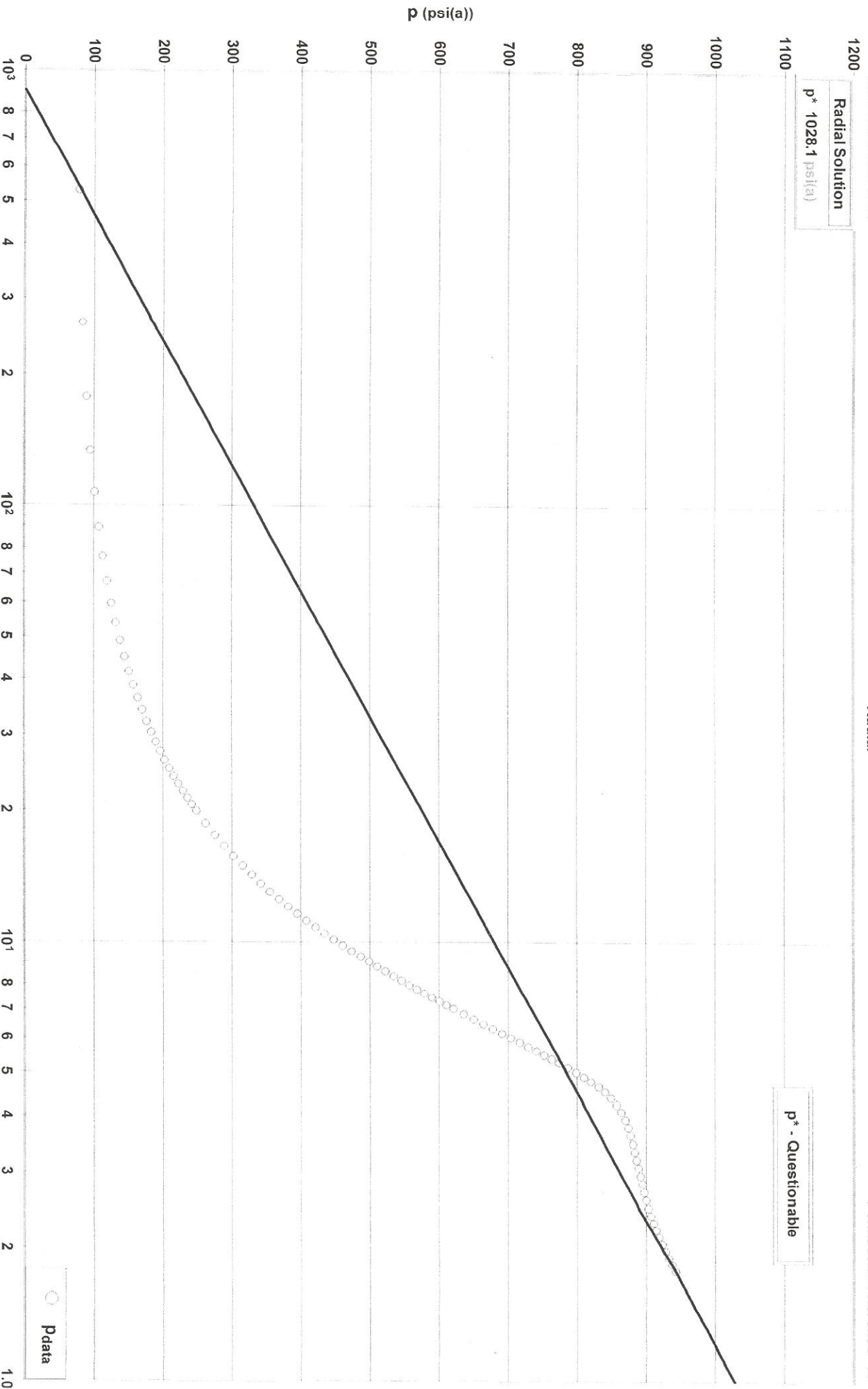
Diagnostic Plot - Shut In 2

Radial

Khua 2, Dst 2
Formation: Cherokee "A"

Radial Solution
p* 1028.1 psi(a)

p* - Questionable



Wiepking - Fullerton Energy LLC
Interval: 7212' - 7246'

Diagnostic Plot - Shut In 2

Khua1 2, Dst 2
Formation: Cherokee "A"

