

# EnCana Corporation

## Planning Report - Geographic

<b>Database:</b>	EDM	<b>Local Co-ordinate Reference:</b>	Well Minch 4-6-4
<b>Company:</b>	DJ/Paradox/WTX	<b>TVD Reference:</b>	WELL @ 5091.0ft (Original Well Elev)
<b>Project:</b>	Wattenberg	<b>MD Reference:</b>	WELL @ 5091.0ft (Original Well Elev)
<b>Site:</b>	New Drills	<b>North Reference:</b>	True
<b>Well:</b>	Minch 4-6-4	<b>Survey Calculation Method:</b>	Minimum Curvature
<b>Wellbore:</b>	Wellbore #1		
<b>Design:</b>	Minch 4-6-4		

<b>Project</b>	Wattenberg,		
<b>Map System:</b>	US State Plane 1983	<b>System Datum:</b>	Mean Sea Level
<b>Geo Datum:</b>	North American Datum 1983		
<b>Map Zone:</b>	Colorado Northern Zone		

Site		New Drills				
Site Position:		Northing:	1,278,589.08ft	Latitude:	40° 5' 49.848 N	
From:	Lat/Long	Easting:	3,130,247.44ft	Longitude:	105° 2' 3.912 W	
Position Uncertainty:		ft	Slot Radius:	in	Grid Convergence:	0.30 °

Well	Minch 4-6-4					
Well Position	+N-S	56,288.4 ft	Northing:	1,334,903.40 ft	Latitude:	40° 15' 6.120 N
	+E-W	4,923.7 ft	Easting:	3,134,864.34 ft	Longitude:	105° 1' 0.552 W
Position Uncertainty		ft	Wellhead Elevation:	ft	Ground Level:	5,078.0 ft

<b>Wellbore</b>	Wellbore #1				
<b>Magnetics</b>	<b>Model Name</b>	<b>Sample Date</b>	<b>Declination (°)</b>	<b>Dip Angle (°)</b>	<b>Field Strength (nT)</b>
	IGRF200510	12/31/2009	9.14	66.95	53,197

<b>Design</b>	Minch 4-6-4				
<b>Audit Notes:</b>					
<b>Version:</b>	<b>Phase:</b>	PROTOTYPE		<b>Tie On Depth:</b>	0.0
<b>Vertical Section:</b>	<b>Depth From (TVD)</b>	<b>+N/-S</b>	<b>+E/-W</b>	<b>Direction</b>	
	(ft)	(ft)	(ft)	(°)	
	0.0	0.0	0.0	92.11	

Plan Sections										
Measured										
Depth	Inclination	Azimuth	Vertical	+N/-S	+E/-W	Dogleg	Build	Turn	TFO	Target
(ft)	(°)	(°)	Depth	(ft)	(ft)	Rate	Rate	Rate	(°)	
			(ft)			(°/100ft)	(°/100ft)	(°/100ft)		
0.0	0.00	0.00	0.0	0.0	0.0	0.00	0.00	0.00	0.00	
750.0	0.00	0.00	750.0	0.0	0.0	0.00	0.00	0.00	0.00	
2,050.9	26.02	92.11	2,006.7	-10.7	290.1	2.00	2.00	0.00	92.11	
6,126.6	26.02	92.11	5,669.3	-76.6	2,076.8	0.00	0.00	0.00	0.00	
7,427.6	0.00	0.00	6,926.0	-87.3	2,366.9	2.00	-2.00	0.00	180.00	
8,427.6	0.00	0.00	7,926.0	-87.3	2,366.9	0.00	0.00	0.00	0.00	Minch 4-6-4

# EnCana Corporation

## Planning Report - Geographic

<b>Database:</b>	EDM	<b>Local Co-ordinate Reference:</b>	Well Minch 4-6-4
<b>Company:</b>	DJ/Paradox/WTX	<b>TVD Reference:</b>	WELL @ 5091.0ft (Original Well Elev)
<b>Project:</b>	Wattenberg	<b>MD Reference:</b>	WELL @ 5091.0ft (Original Well Elev)
<b>Site:</b>	New Drills	<b>North Reference:</b>	True
<b>Well:</b>	Minch 4-6-4	<b>Survey Calculation Method:</b>	Minimum Curvature
<b>Wellbore:</b>	Wellbore #1		
<b>Design:</b>	Minch 4-6-4		

Planned Survey										
Measured Depth (ft)	Inclination (°)	Azimuth (°)	Vertical Depth (ft)	+N/-S (ft)	+E/-W (ft)	Map Northing (ft)	Map Easting (ft)	Latitude	Longitude	
0.0	0.00	0.00	0.0	0.0	0.0	1,334,903.40	3,134,864.34	40° 15' 6.120 N	105° 1' 0.552 W	
700.0	0.00	0.00	700.0	0.0	0.0	1,334,903.40	3,134,864.34	40° 15' 6.120 N	105° 1' 0.552 W	
Surface										
750.0	0.00	0.00	750.0	0.0	0.0	1,334,903.40	3,134,864.34	40° 15' 6.120 N	105° 1' 0.552 W	
2,050.9	26.02	92.11	2,006.7	-10.7	290.1	1,334,894.28	3,135,154.54	40° 15' 6.014 N	105° 0' 56.810 W	
4,352.5	26.02	92.11	4,075.0	-47.9	1,299.1	1,334,862.56	3,136,163.66	40° 15' 5.646 N	105° 0' 43.797 W	
Sussex										
4,834.4	26.02	92.11	4,508.0	-55.7	1,510.3	1,334,855.92	3,136,374.92	40° 15' 5.569 N	105° 0' 41.073 W	
Shannon										
6,126.6	26.02	92.11	5,669.3	-76.6	2,076.8	1,334,838.12	3,136,941.52	40° 15' 5.362 N	105° 0' 33.766 W	
7,427.6	0.00	0.00	6,926.0	-87.3	2,366.9	1,334,828.99	3,137,231.72	40° 15' 5.256 N	105° 0' 30.024 W	
7,638.6	0.00	0.00	7,137.0	-87.3	2,366.9	1,334,828.99	3,137,231.72	40° 15' 5.256 N	105° 0' 30.024 W	
Niobrara										
7,912.6	0.00	0.00	7,411.0	-87.3	2,366.9	1,334,828.99	3,137,231.72	40° 15' 5.256 N	105° 0' 30.024 W	
Codell										
8,277.6	0.00	0.00	7,776.0	-87.3	2,366.9	1,334,828.99	3,137,231.72	40° 15' 5.256 N	105° 0' 30.024 W	
J Sand										
8,330.6	0.00	0.00	7,829.0	-87.3	2,366.9	1,334,828.99	3,137,231.72	40° 15' 5.256 N	105° 0' 30.024 W	
A Marker										
8,427.6	0.00	0.00	7,926.0	-87.3	2,366.9	1,334,828.99	3,137,231.72	40° 15' 5.256 N	105° 0' 30.024 W	
Production - Minch 4-6-4										

Design Targets										
Target Name	Dip Angle (°)	Dip Dir. (°)	TVD (ft)	+N/-S (ft)	+E/-W (ft)	Northing (ft)	Easting (ft)	Latitude	Longitude	
- hit/miss target										
- Shape										
Minch 4-6-4	0.00	0.00	7,926.0	-87.3	2,366.9	1,334,828.99	3,137,231.72	40° 15' 5.256 N	105° 0' 30.024 W	
- plan hits target										
- Point										

Casing Points					
Measured Depth (ft)	Vertical Depth (ft)	Name	Casing Diameter (in)	Hole Diameter (in)	
700.0	700.0	Surface	8.625	12.250	
8,427.6	7,926.0	Production	4.500	7.785	

Formations						
Measured Depth (ft)	Vertical Depth (ft)	Name	Lithology	Dip (°)	Dip Direction (°)	
4,352.5	4,075.0	Sussex		0.00		
4,834.4	4,508.0	Shannon		0.00		
7,638.6	7,137.0	Niobrara		0.00		
7,912.6	7,411.0	Codell		0.00		
8,277.6	7,776.0	J Sand		0.00		
8,330.6	7,829.0	A Marker		0.00		

REFERENCE INFORMATION

Co-ordinate (N/E) Reference: Well Minch 4-6-4, True North  
Vertical (TVD) Reference: WELL @ 5091.0ft (Original Well Elev)  
Section (VS) Reference: Slot - (0.0N, 0.0E)  
Measured Depth Reference: WELL @ 5091.0ft (Original Well Elev)  
Calculation Method:

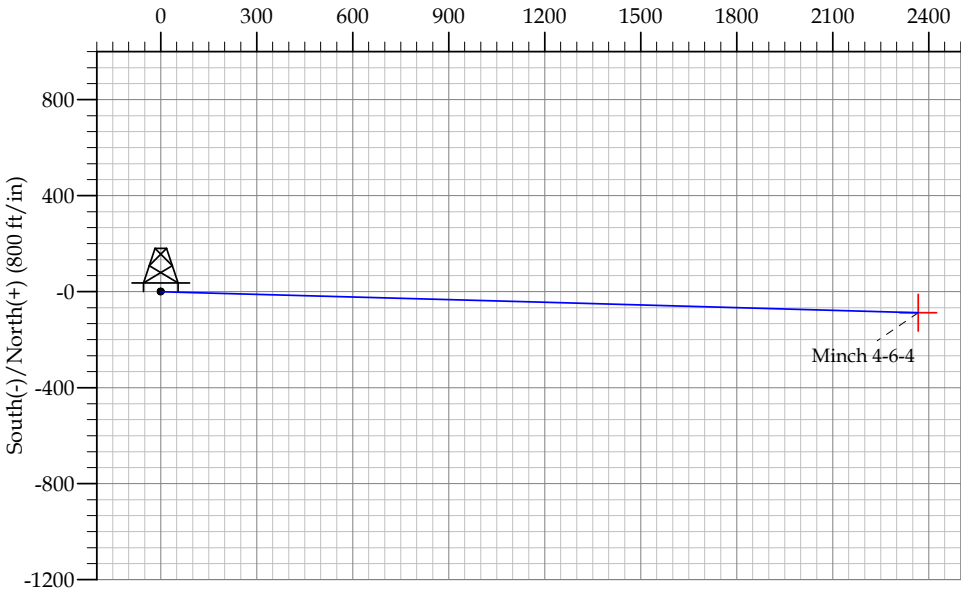
WELL DETAILS: Minch 4-6-4

+N/-S	+E/-W	Northing	Ground Level: Easting	5078.0 Latitude	Longitude	Slot
-------	-------	----------	-----------------------	-----------------	-----------	------

SECTION DETAILS

Sec	MD	Inc	Azi	TVD	+N/-S	+E/-W	DLeg	TFace	VSec	Target
1	0.0	0.00	0.00	0.0	0.0	0.0	0.00	0.00	0.0	
2	750.0	0.00	0.00	750.0	0.0	0.0	0.00	0.00	0.0	
3	2050.9	26.02	92.11	2006.7	-10.7	290.1	2.00	92.11	290.3	
4	6126.6	26.02	92.11	5669.3	-76.6	2076.8	0.00	0.00	2078.2	
5	7427.6	0.00	0.00	6926.0	-87.3	2366.9	2.00	180.00	2368.6	
6	8427.6	0.00	0.00	7926.0	-87.3	2366.9	0.00	0.00	2368.6	Minch 4-6-4

West(-)/East(+) (600 ft/in)

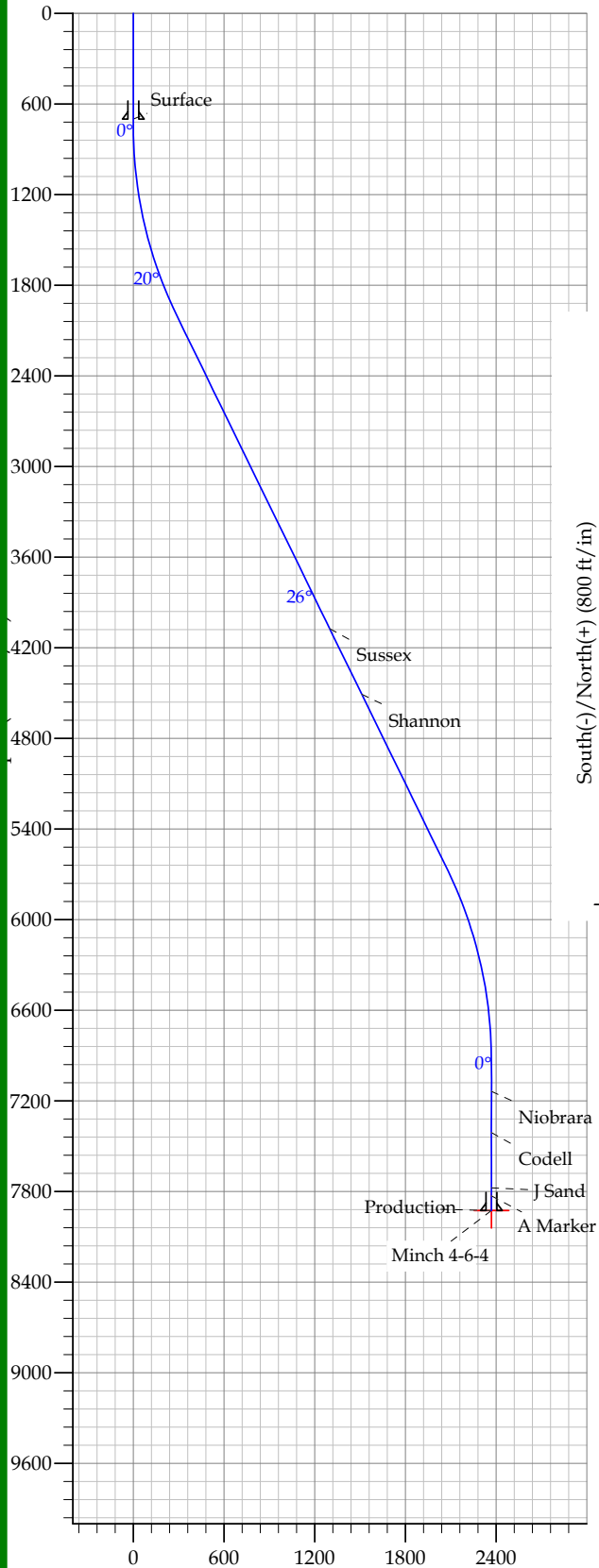


FORMATION TOP DETAILS

TVDPath	MDPath	Formation
4075.0	4352.5	Sussex
4508.0	4834.4	Shannon
7137.0	7638.6	Niobrara
7411.0	7912.6	Codell
7776.0	8277.6	J Sand
7829.0	8330.6	A Marker

CASING DETAILS

TVD	MD	Name	Size
700.0	700.0	Surface	8.625
7926.0	8427.6	Production	4.500



Vertical Section at 92.11° (1200 ft/in)