

**CERTIFICATION OF OWNER NOTIFICATION**  
**Order No. 1R-100 – 318A Well Locations**

Minch 4-6-4

1. Encana Oil & Gas (USA) Inc. (Encana) proposes to drill an interior infill well in accordance with Rule 318A, Order No. 1R-100. The well will be drilled at a surface location of 1479' FSL, 245' FWL in Sec.4 T3N, R68W and a bottomhole location of 1380' FSL, 2611' FWL in Sec.4 T3N, R68W, Weld County, Colorado, as delineated on the attached location plat.
2. In accordance with Section e (6) of the Rule, Encana notified by certified mail the owners of the proposed boundary well of the proposal to drill the well and the designated wellbore spacing unit.
3. Encana hereby certifies that no objection to the proposed wellbore or the proposed wellbore spacing unit was received.
4. Encana requests that the Director administratively approve the boundary line well and the wellbore spacing unit for the Minch 4-6-4 well.

**EnCana Oil & Gas (USA) Inc.**



**Regulatory Analyst**

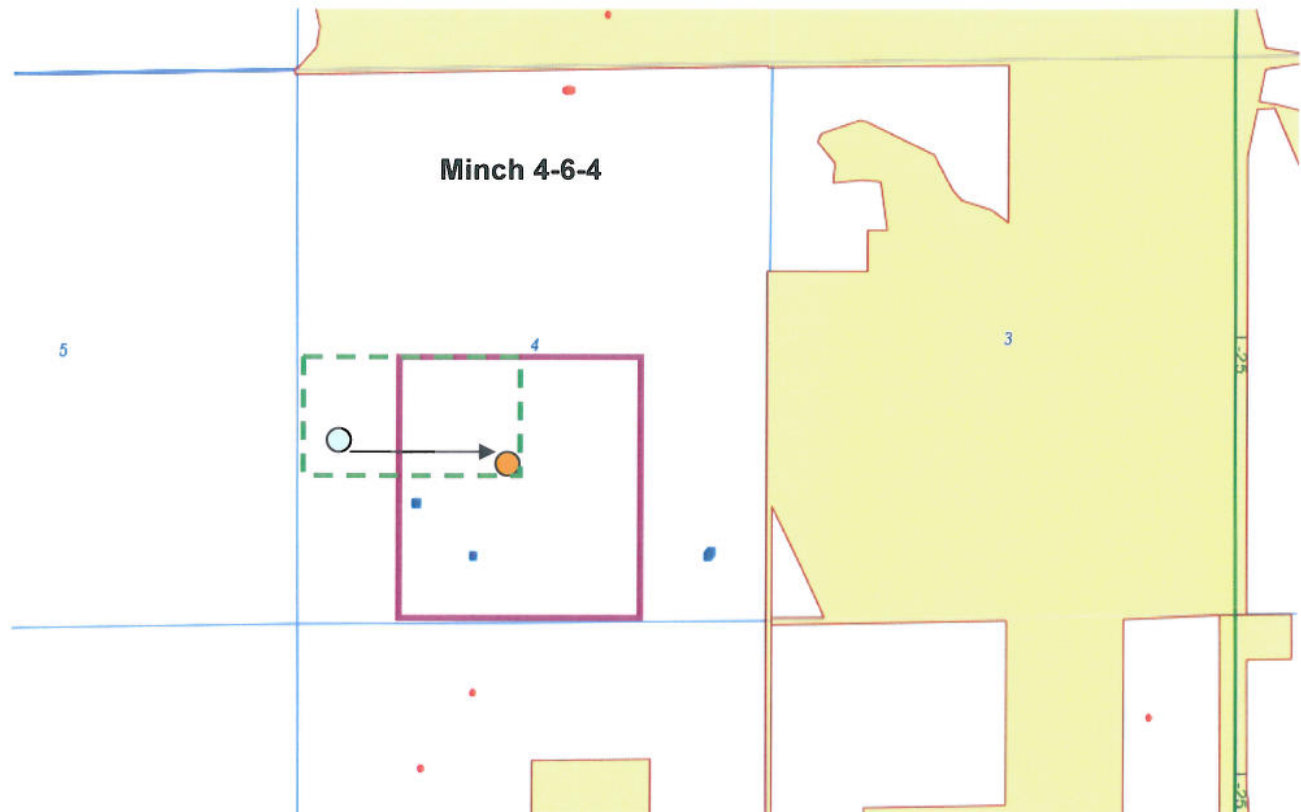
**Date: 1/11/2012**

Minch 4-6-4  
NW4SW4 SEC 4-T3N-R68W

Purple outline = Proposed 160 acre spacing unit: E2SW4, W2SE4 Sec. 4  
Green dashed outline = N2SW4/4 (location of surface/bottom hole)

Bottom hole located 1380' FSL, 2611' FWL Section 4-T3N-R68W

This quarter-section has less than 8 bottom hole wells producing from the  
Codell, Niobrara, and J Sand formations.



○ = Surface location

● = Bottom hole location