

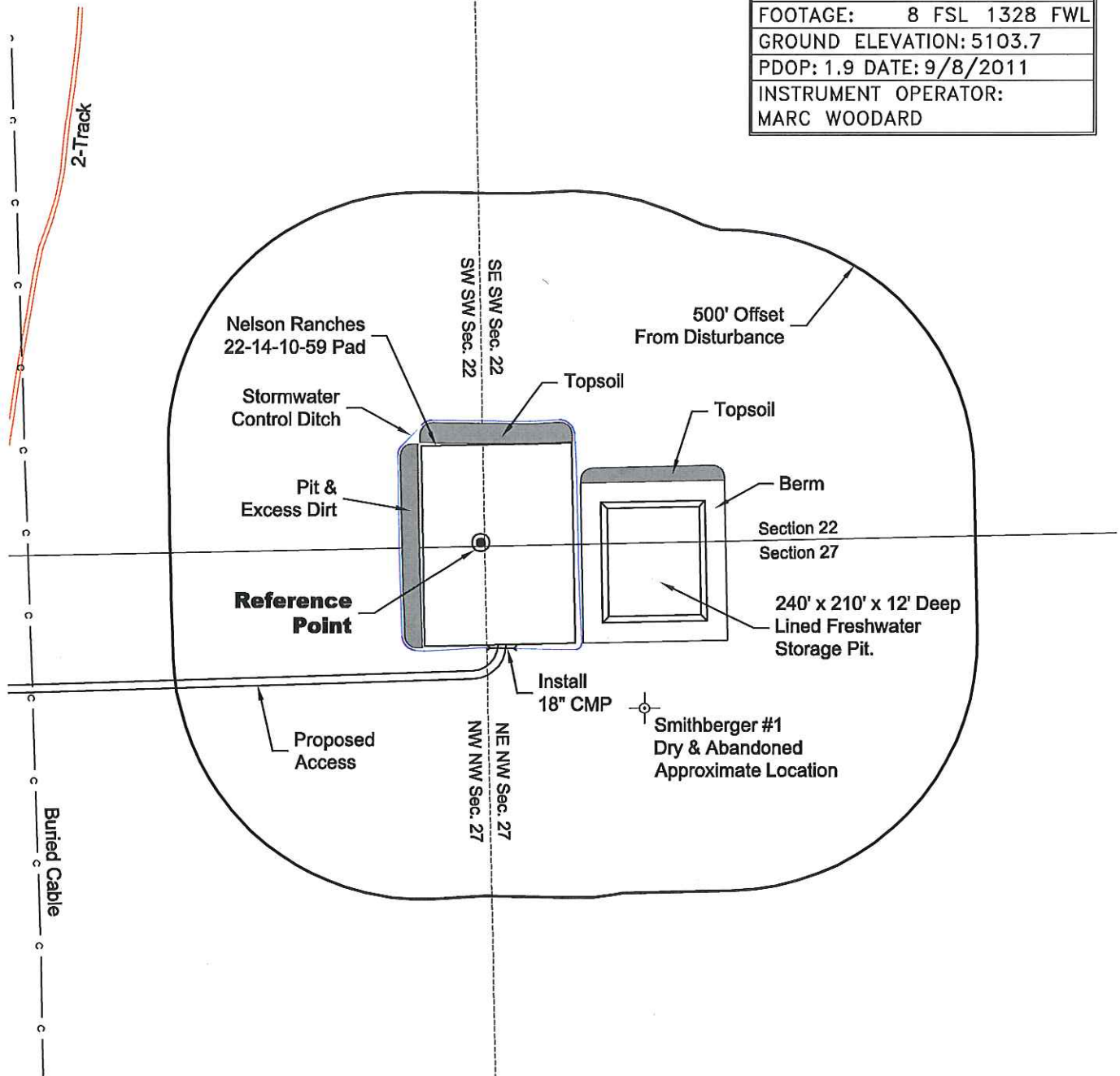
LOCATION DRAWING

VEGETATION:
DRY LAND PASTURE

SURFACE USE:
GRAZING

REFERENCE POINT

LATITUDE: 40.81619
LONGITUDE: -103.97021
FOOTAGE: 8 FSL 1328 FWL
GROUND ELEVATION: 5103.7
PDOP: 1.9 DATE: 9/8/2011
INSTRUMENT OPERATOR:
MARC WOODARD



DISTURBANCE ACREAGE:
4.0± DRILLING OPERATIONS
2.6± FRESHWATER STORAGE PIT
1.0± INTERIM RECLAIM

NOTE:

ALL PRODUCTION FACILITIES WILL BE ON PAD.

10/11/11



0 300 600
Graphic Scale in Feet
1 Inch = 300 feet



LAND SURVEYING AND MAPPING
LAFAYETTE - WINTER PARK
Ph 303 666 0379 Fx 303 665 6320

CARRIZO OIL & GAS, INC
NELSON RANCHES 22-14-10-59 PAD

SW1/4 SW1/4 SECTION 22 T10N R59W
6th PM WELD COUNTY COLORADO