

CONSTRUCTION LAYOUT DRAWING

1 of 2

VEGETATION:
DRY LAND PASTURE

SURFACE USE:
GRAZING

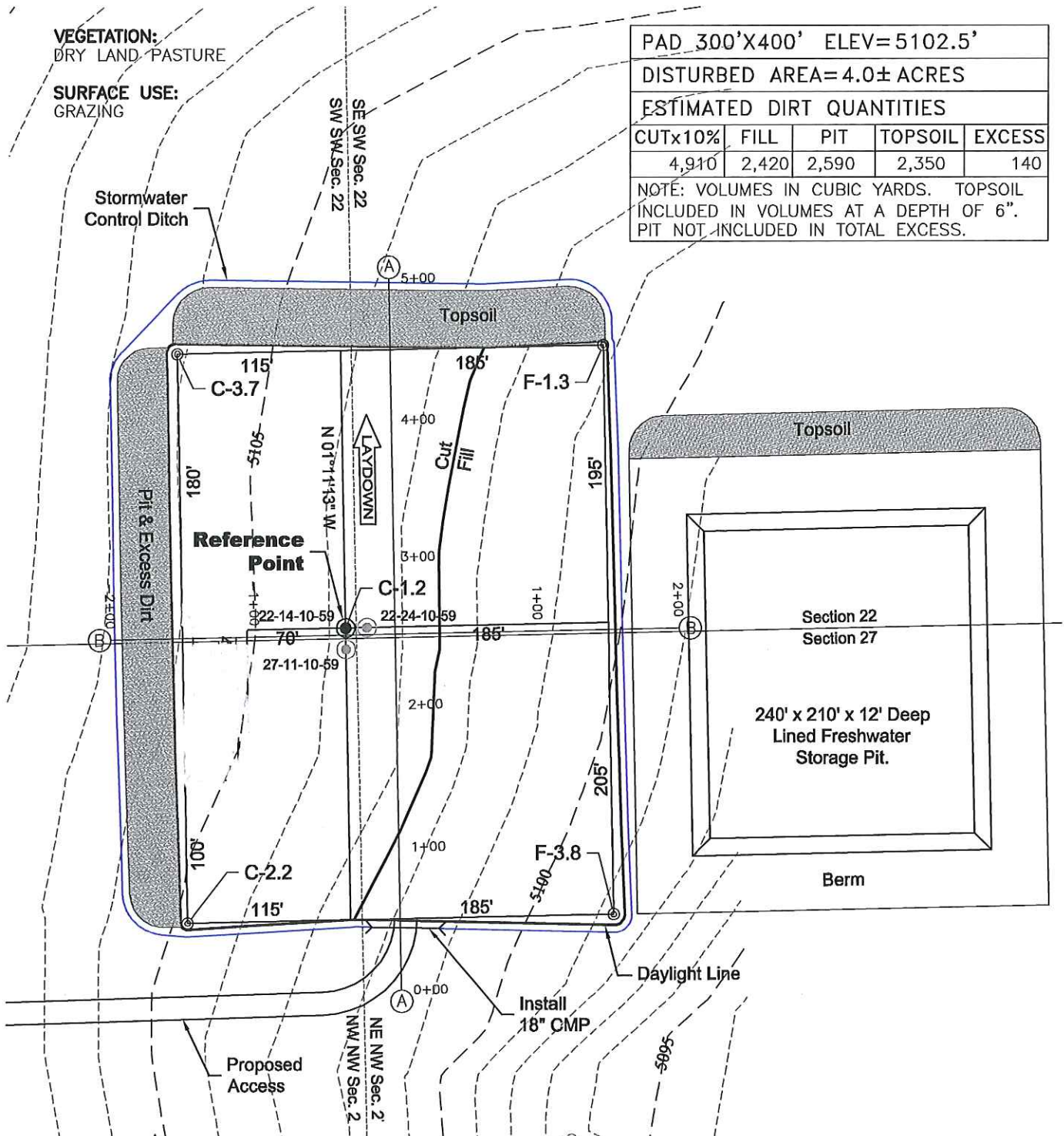
PAD 300'X400' ELEV=5102.5'

DISTURBED AREA=4.0± ACRES

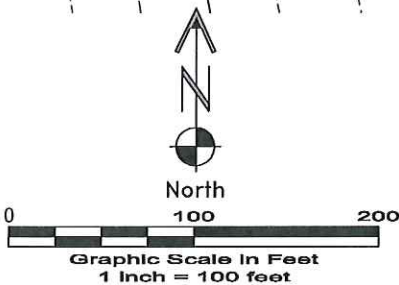
ESTIMATED DIRT QUANTITIES

CUTx10%	FILL	PIT	TOPSOIL	EXCESS
4,910	2,420	2,590	2,350	140

NOTE: VOLUMES IN CUBIC YARDS. TOPSOIL INCLUDED IN VOLUMES AT A DEPTH OF 6". PIT NOT INCLUDED IN TOTAL EXCESS.



NOTE:
10% ALLOWANCE IS MADE FOR SOIL EXPANSION.



GEO SURV

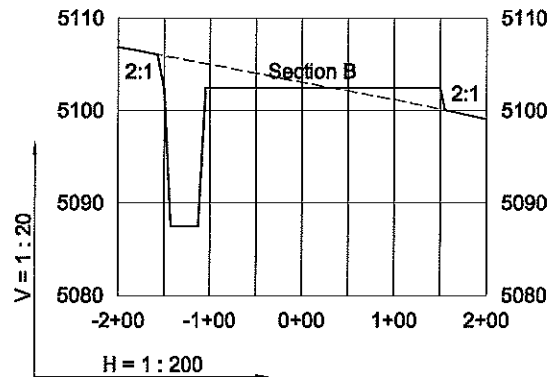
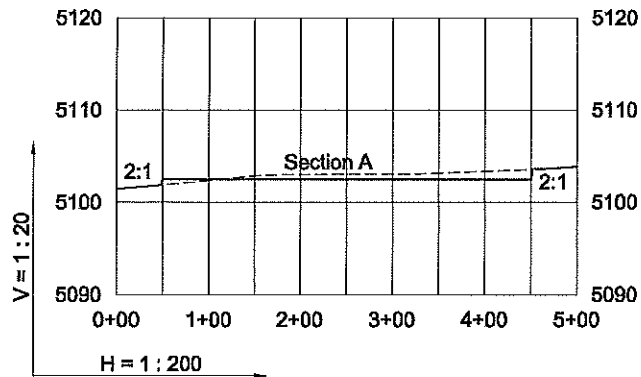
LAND SURVEYING AND MAPPING
LAFAYETTE - WINTER PARK
Ph 303 666 0379 Fx 303 665 6320

CARRIZO OIL & GAS, INC
NELSON RANCHES 22-14-10-59 PAD

SW1/4 SW1/4 SECTION 22 T10N R59W
6th PM WELD COUNTY COLORADO

CONSTRUCTION LAYOUT DRAWING

2 of 2



10/11/11

----- Existing Ground
 _____ Proposed Grade

GEO SURV

LAND SURVEYING AND MAPPING
 LAFAYETTE - WINTER PARK
 Ph 303 666 0379 Fx 303 665 6320

CARRIZO OIL & GAS, INC
 NELSON RANCHES 22-14-10-59 PAD

SW1/4 SW1/4 SECTION 22 T10N R59W
 6th PM WELD COUNTY COLORADO